

Duewall Home Beautification



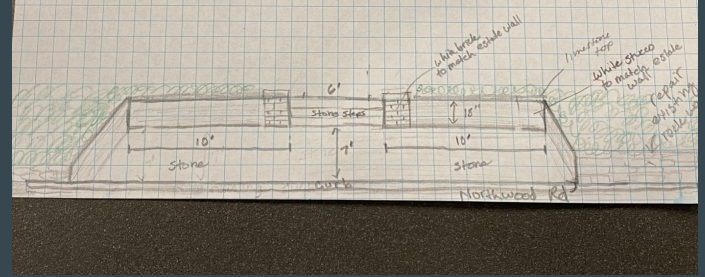
McDonald-Doughtie House
1616 Northwood Road
Austin, Texas 78703



List of Outdoor Home Improvements Seeking Commission Approval

- Estate Wall in place of wood fence
- Iron Fence in front yard
- Curb Appeal and Hardscape Landing at the curb
- Sidewalk Improvement

BLANCO ROAD
(50' R.O.W.)



Current Photo of the House



Current Wood Fence (showing this is a high priority maintenance issue)



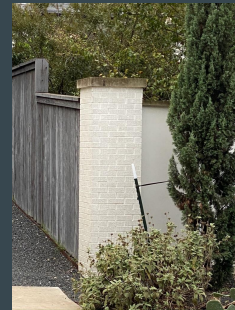
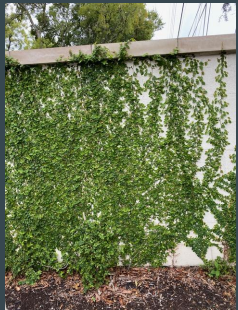
Current Hardscaping and Sidewalk (showing this is a high priority maintenance issue)

- Current Sidewalk and Dry Stack Rock “Retaining Wall” at the street (after Google Fiber went through the dry stack retaining wall). As you can see, it needs to be rehabbed for the beautification on the property.



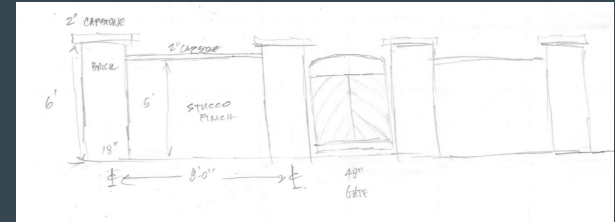
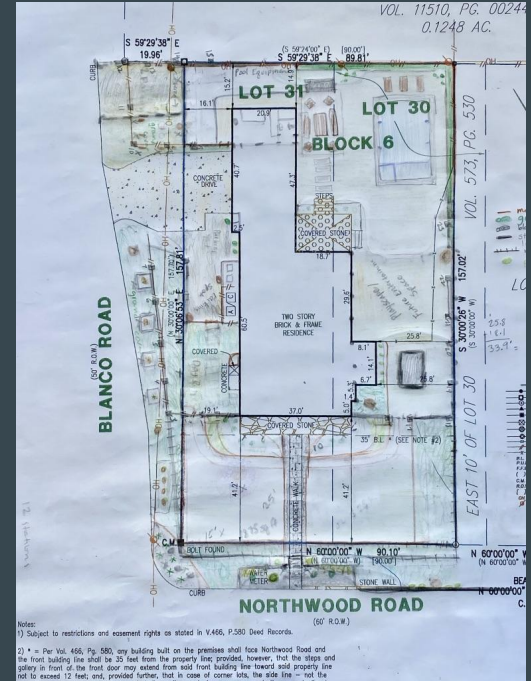
Historical Commission Item #1 - Estate Wall

Replace poor quality wood fence (that is deteriorating in some places) with an estate wall, similar to other estate walls in our historic neighborhood (as shown below). Materials would include stucco over cinder block, limestone top, and possibly white brick columns as depicted below. We would like it covered in ivy as a “green screen.”



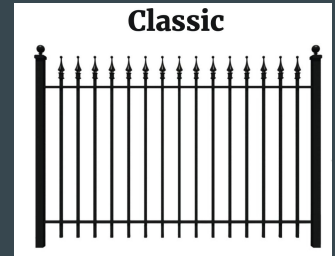
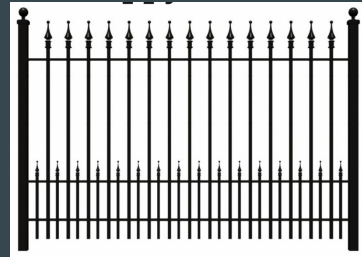
Estate Wall Continued

- Clockwise: a) current fence, b) plan showing wall, c) rough sketch, d) example of wall in neighborhood



Historical Commission Item #2 - Black Iron Fence

- Requesting a black decorative fence in the perimeter of our front yard as typical of our historic neighborhood to improve safety and security of the property due to a busy intersection.
- Materials to include high quality commercial grade fencing material.



Historical Commission Item #3: Hardscaped Passenger Landing at the Street and Improved Sidewalk

- We would like to use the existing dry stack rock we have to reconstruct the small retaining wall as it comes from our next door neighbor's house.
- Then at the curb, we want to cut into the yard for a landing to allow for a car door to open and a passenger to safely exit a car.
- If we are approved for an estate wall, the edge can be made out of the same stucco material as the wall.
- If an estate wall is not an option, other choices are a thick gauge metal material covered in trailing plants as to not compete with the adjacent stacked rock retaining wall at the street and coordinate with the black iron fence, or white painted brick.
- Photo examples forthcoming.

Examples of Mini Retaining Wall for Passenger Landing



Sidewalk Ideas

We are requesting to replace or resurface our badly cracked sidewalk. Options to consider are a quality stone or concrete sidewalk, or limestone pavers to compliment the hardscaping at the curb and stone on the front porch.

