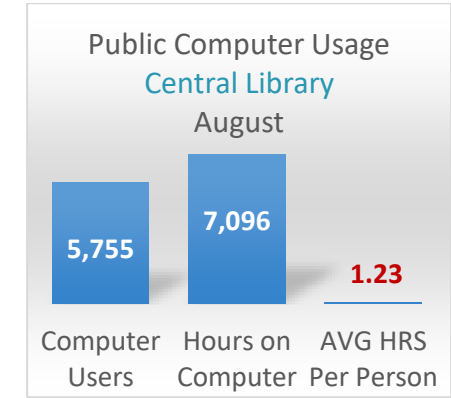
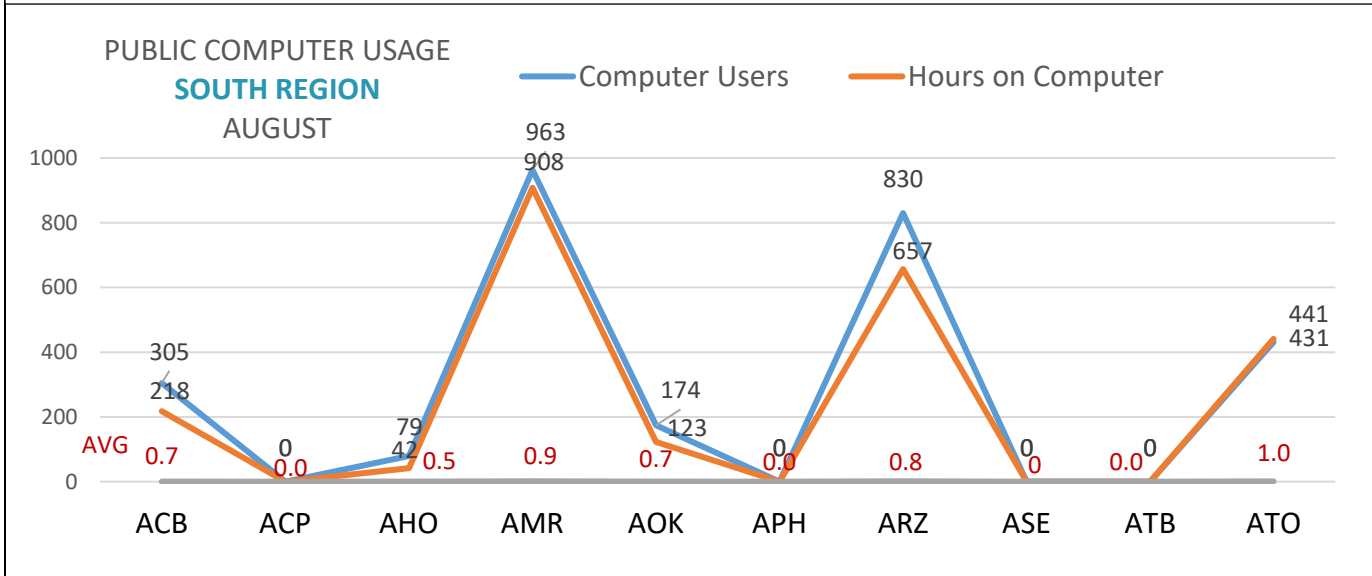


This data is significantly impacted by COVID limited occupancy and branch closures: Cepeda, Terrazas, University Hills, and Pleasant Hill.

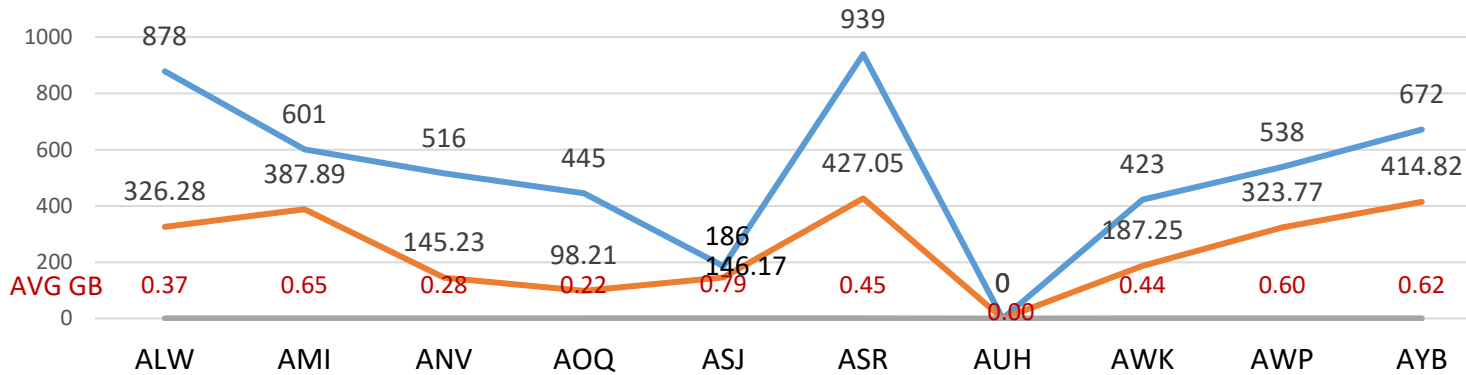


Personal Devices and WIFI Usage

NORTH REGION

AUGUST

— # OF DEVICES — DATA GB USE



CENTRAL LIBRARY
Personal Devices Connecting to WIFI and Data Usage

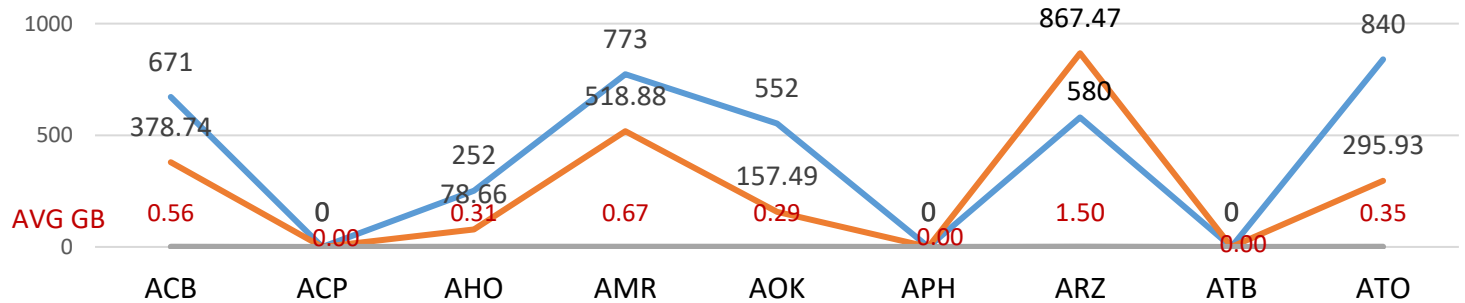
8,998	9,170	1.02
# OF DEVICES	DATA GB USE	AVG

Personal Devices and WIFI Usage

SOUTH REGION

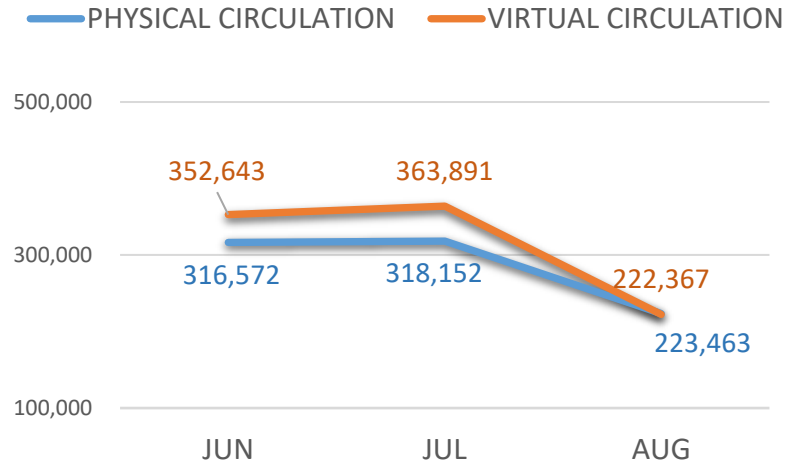
AUGUST

— # OF DEVICES — DATA GB USE

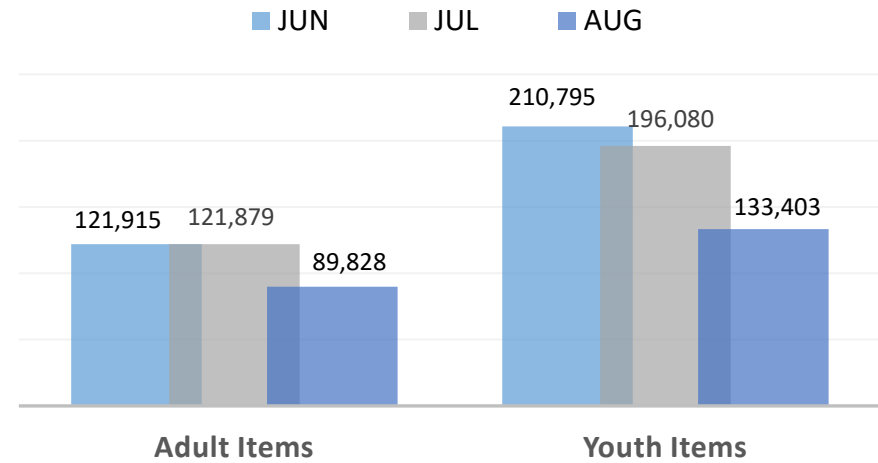


Returning to Stage 5 in August impacted physical check-outs. Use of our Virtual Library held steady.

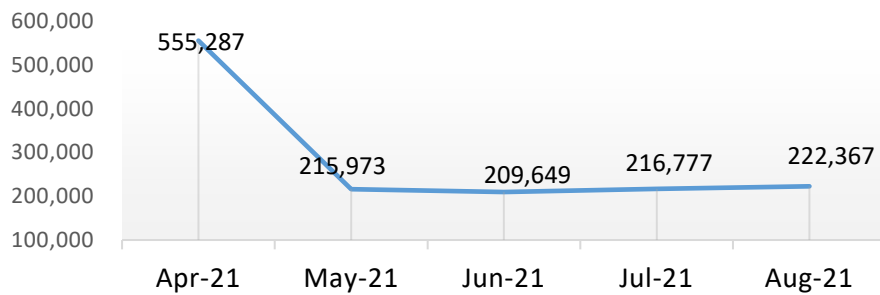
CIRCULATION TRENDS



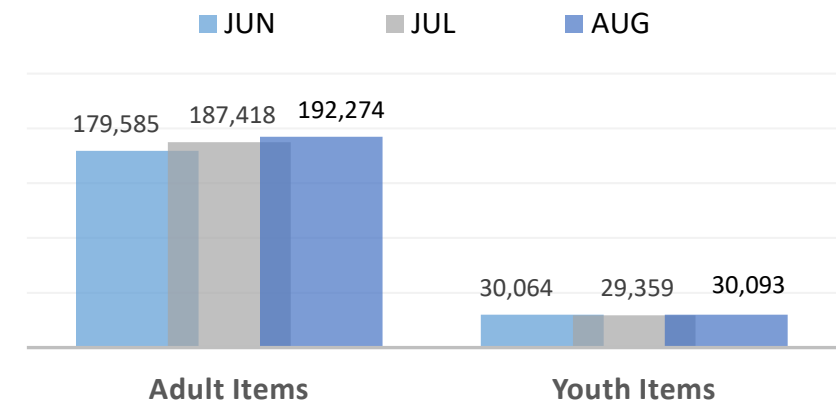
PHYSICAL CIRCULATION BY AUDIENCE



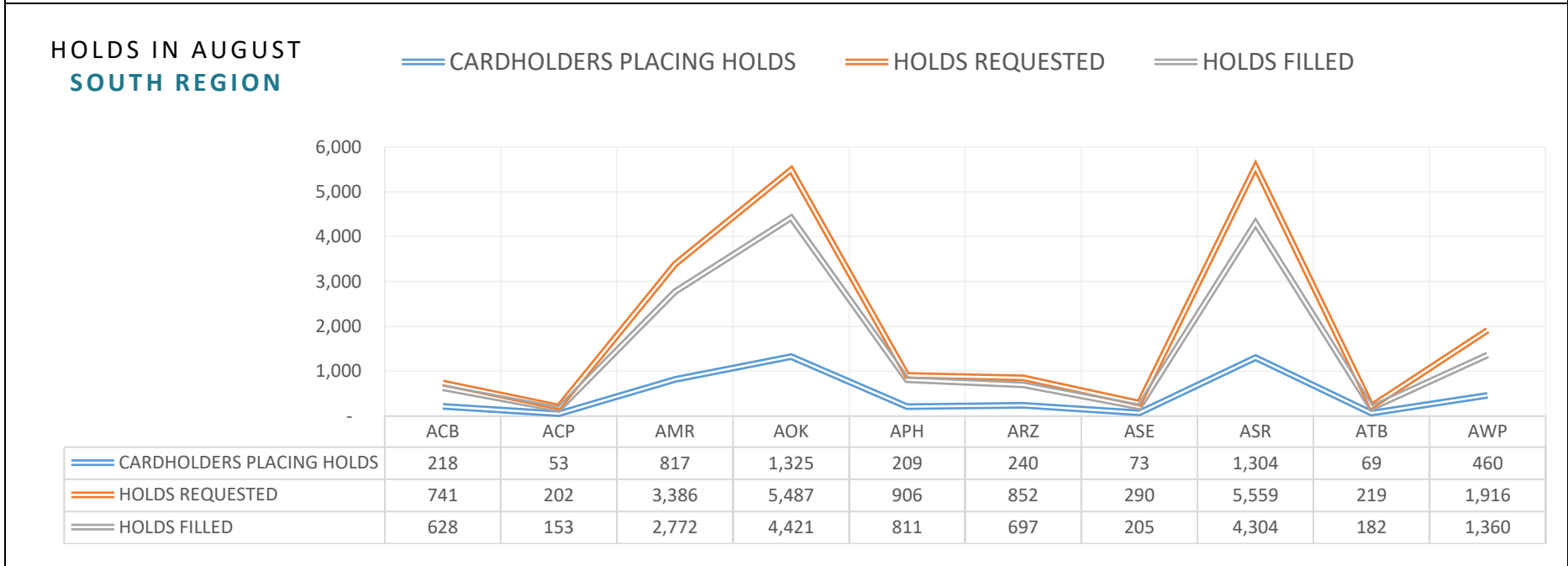
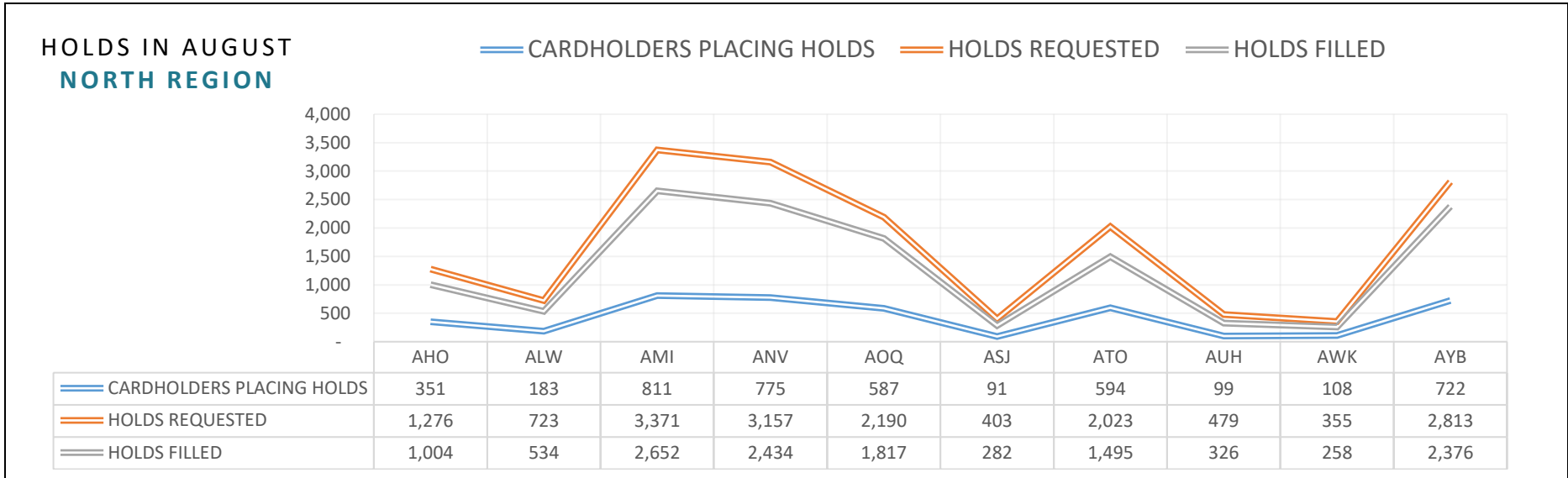
VIRTUAL CIRCULATION TRENDS



VIRTUAL CIRCULATION BY AUDIENCE



On average, customers usually pick up 3 holds.



GOAL: Increase use of Express kiosks and decrease Desk activity.

