

CITY OF AUSTIN
DAVENPORT RANCH FIRE/EMS STATION

DESIGN COMMISSION | OCTOBER 25, 2021

PGAL

PREVIOUS COA FIRE/EMS STATIONS

2

DEL VALLE FIRE/EMS STATION

- 12,700 square feet
- Single story structure
- 4 pull-through apparatus bays
- Completed July 2020



TRAVIS COUNTRY FIRE/EMS STATION

- 15,000 square feet
- 2 story structure due to site size
- 4 back-in apparatus bays
- Completed July 2021



DAVENPORT RANCH FIRE/EMS STATION

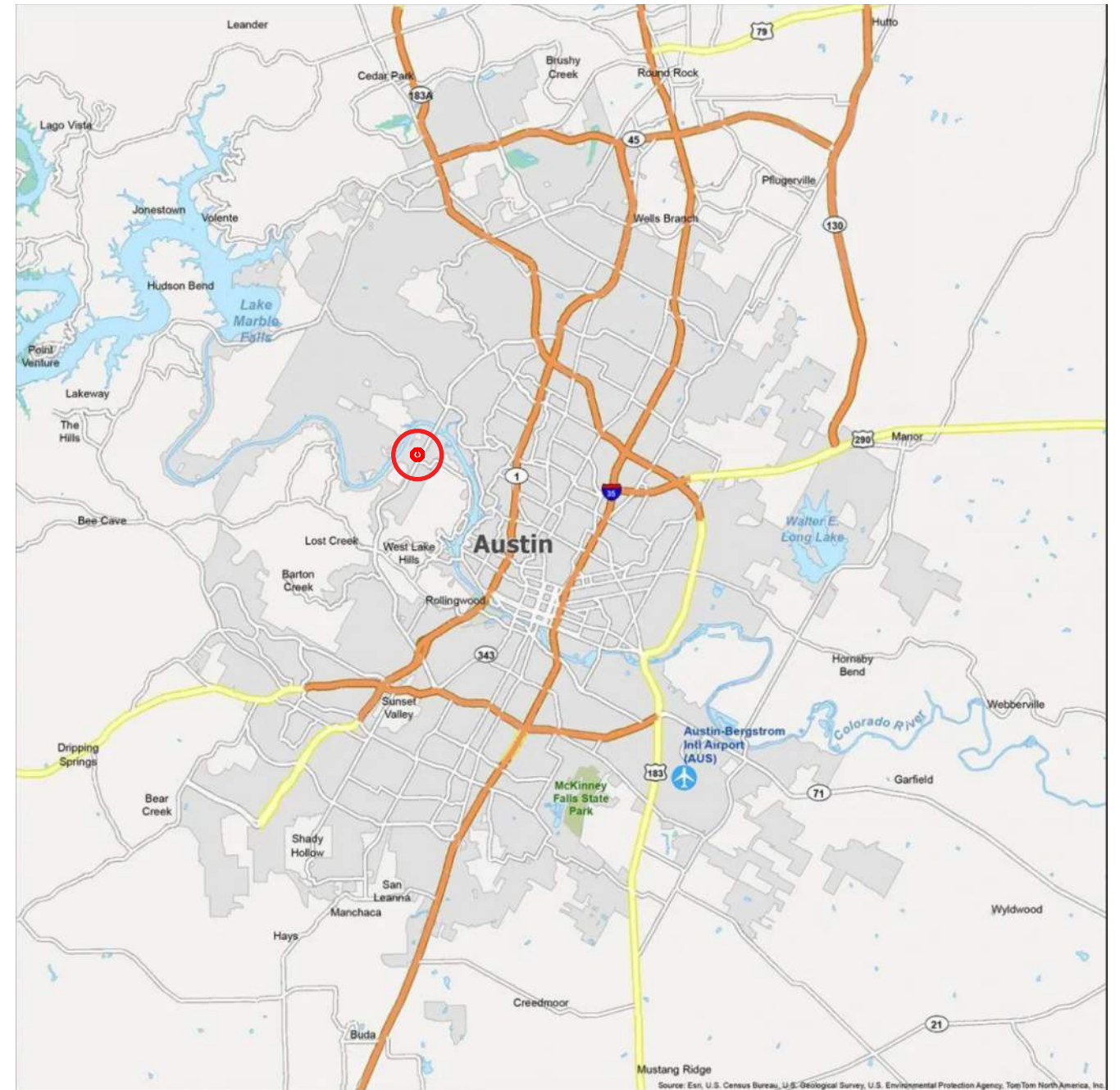
3

GOAL:

PROVIDE EMERGENCY RESPONSE SERVICES TO DAVENPORT RANCH AREA

PROJECT ELEMENTS:

- 13,500 square feet; 4 apparatus bays
- 24 staff parking
- 2 visitor parking
- Compact design due to site limitation
- Water treatment pond
- Site retaining wall
- Staff exterior space (accessible from Day Room)
- Day Room, Kitchen, Gym, gear storage rooms, 14 sleep rooms



PROJECT OVERVIEW



CITY OF AUSTIN
DAVENPORT RANCH FIRE/EMS STATION

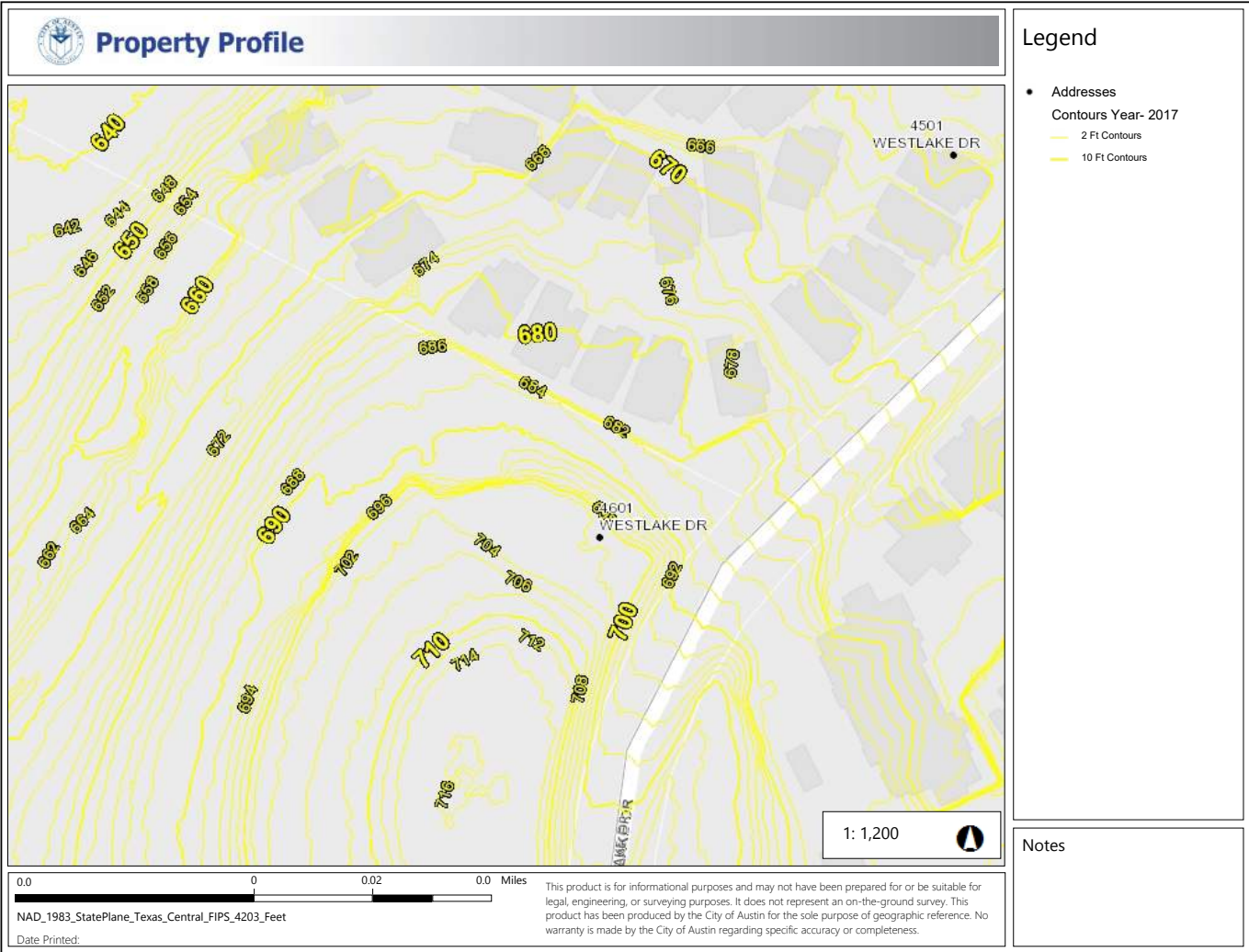
DESIGN COMMISSION | OCTOBER 25, 2021



DAVENPORT RANCH FIRE/EMS STATION

SITE & CONTEXT:

- On St. Stephen’s property
- No public transport within 1/4 mile
- Located in the ETJ
- Site has steep, rocky terrain





SITE BIRDSEYE VIEW



CITY OF AUSTIN
DAVENPORT RANCH FIRE/EMS STATION

DESIGN COMMISSION | OCTOBER 25, 2021







SITE PHOTO: FUTURE DRIVE LOCATION



CITY OF AUSTIN
DAVENPORT RANCH FIRE/EMS STATION

DESIGN COMMISSION | OCTOBER 25, 2021





SITE PHOTO: LOOKING NORTH



CITY OF AUSTIN
DAVENPORT RANCH FIRE/EMS STATION

DESIGN COMMISSION | OCTOBER 25, 2021



ARCHITECTURAL CONTEXT

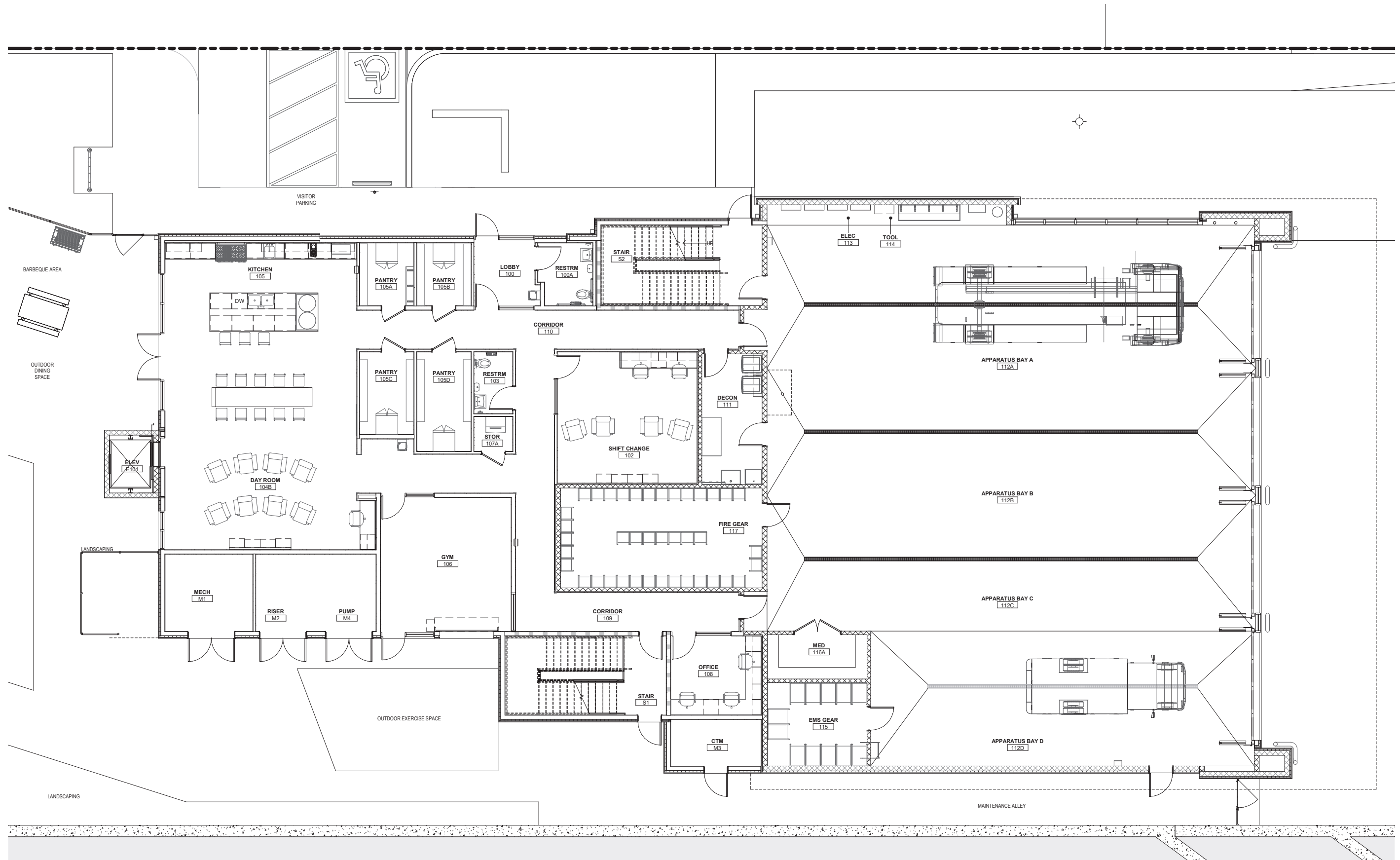
10

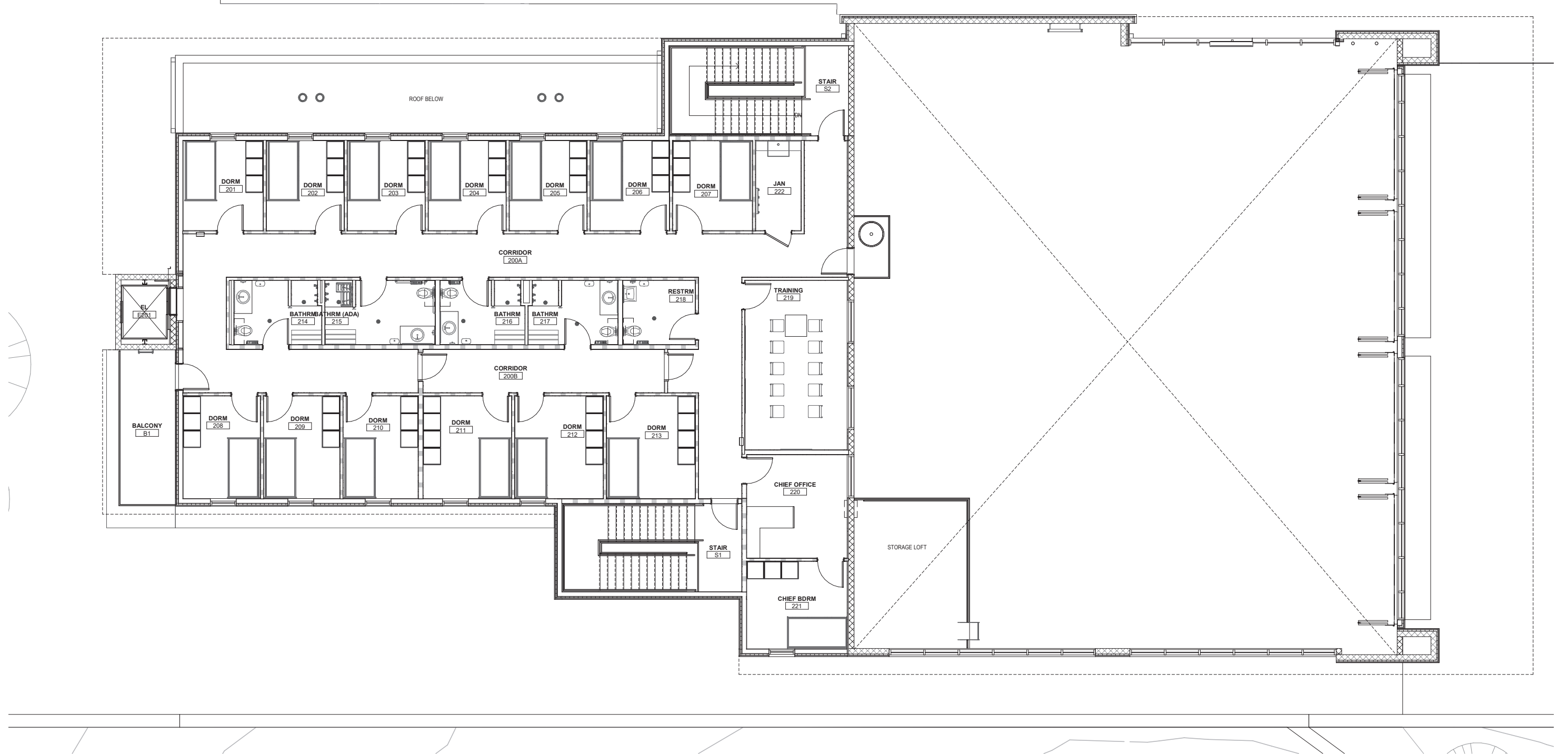
ST. STEPHEN'S EXISTING ARCHITECTURE:

- Natural Stone
- Metal low-slope roofing
- Large architectural overhangs
- Large glazing units











AERIAL RENDERING



CITY OF AUSTIN
DAVENPORT RANCH FIRE/EMS STATION

DESIGN COMMISSION | OCTOBER 25, 2021





RENDERING: VIEW FROM DRIVEWAY





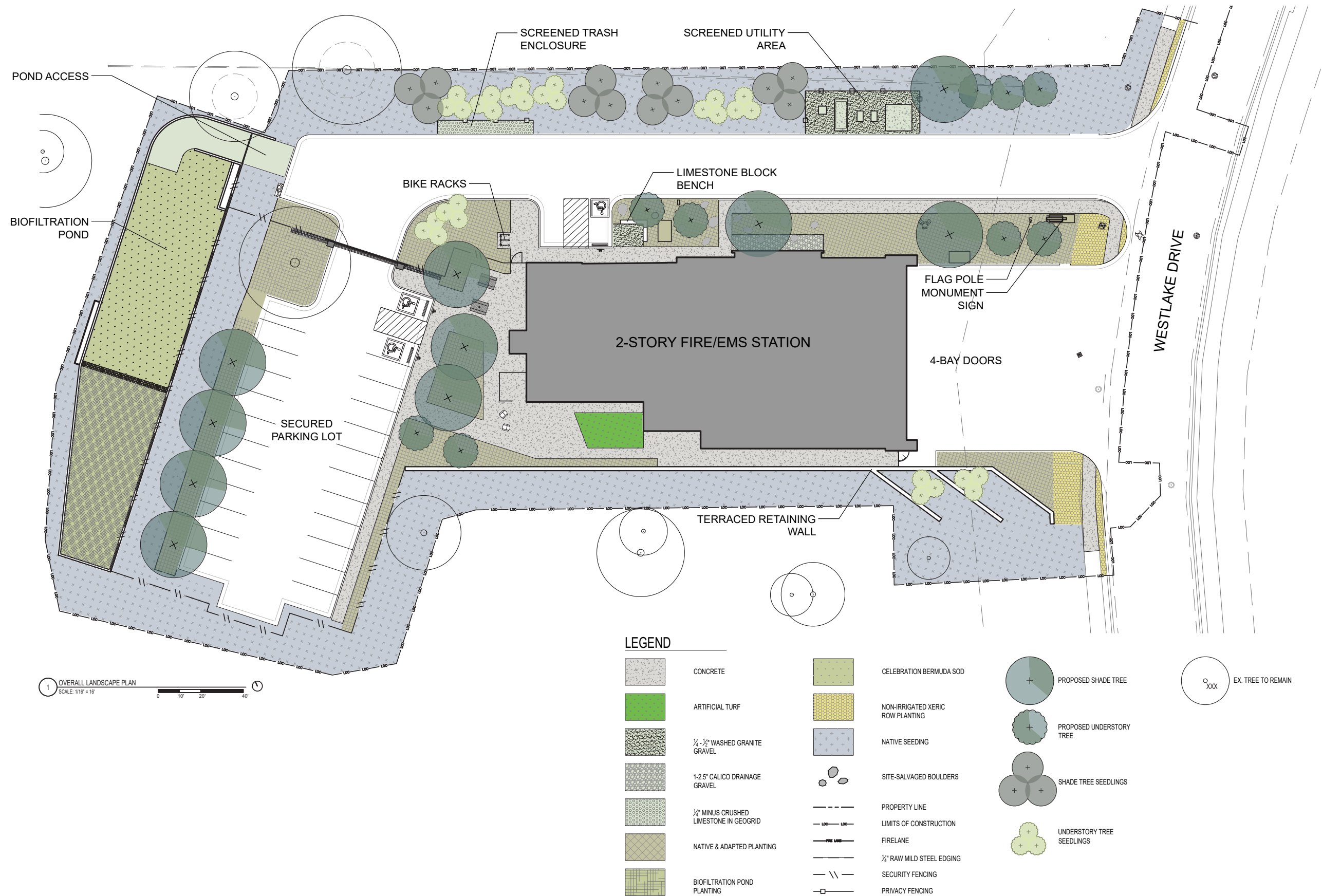
RENDERING: VIEW FROM PROPERTY LINE



CITY OF AUSTIN
DAVENPORT RANCH FIRE/EMS STATION

DESIGN COMMISSION | OCTOBER 25, 2021









RENDERING: PLANTING MATERIALS



CITY OF AUSTIN
DAVENPORT RANCH FIRE/EMS STATION

DESIGN COMMISSION | OCTOBER 25, 2021



20

Regional Priority: Additional points for using photovoltaic panels

