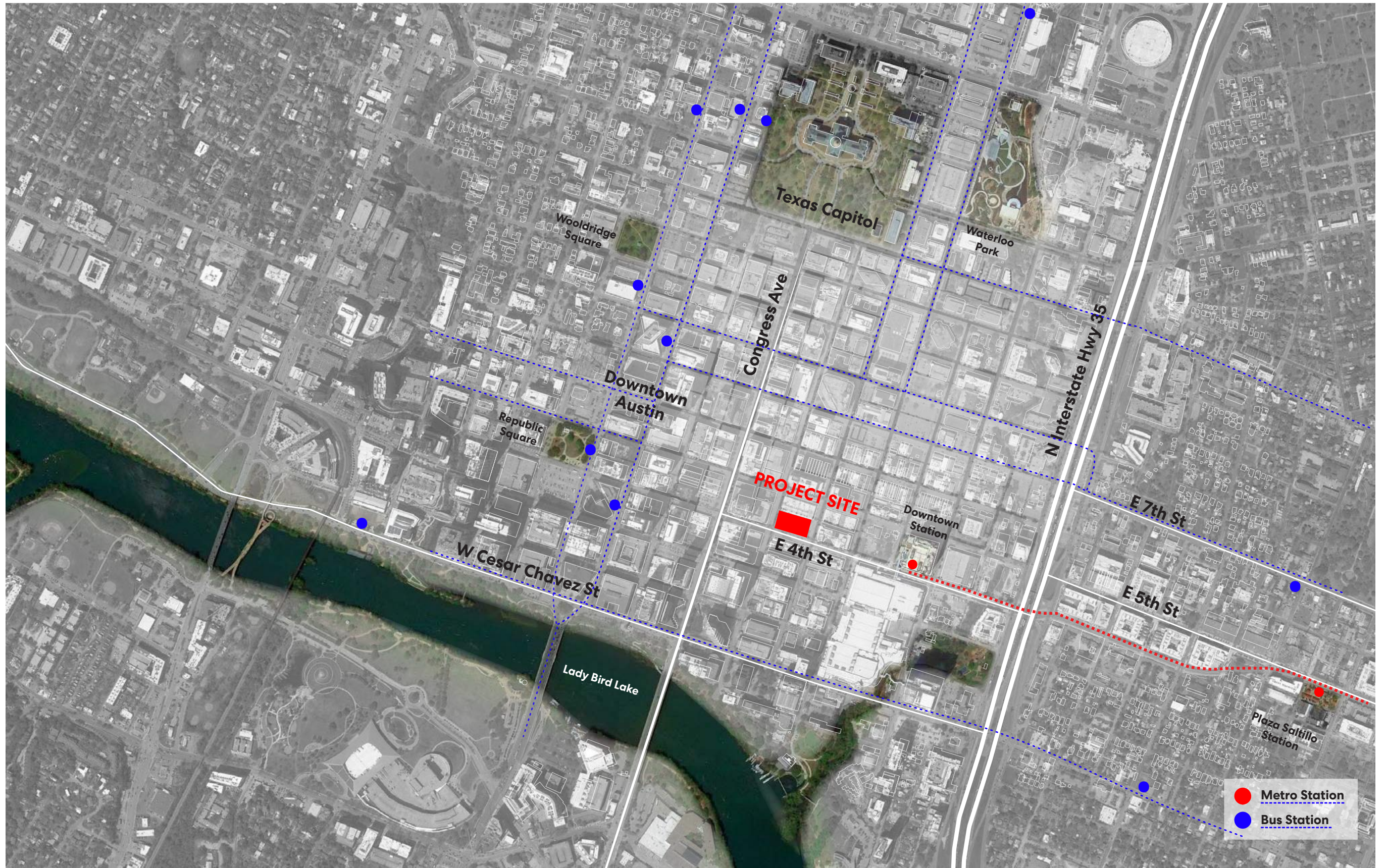








4th & Brazos

Design Commission

25 October 2021

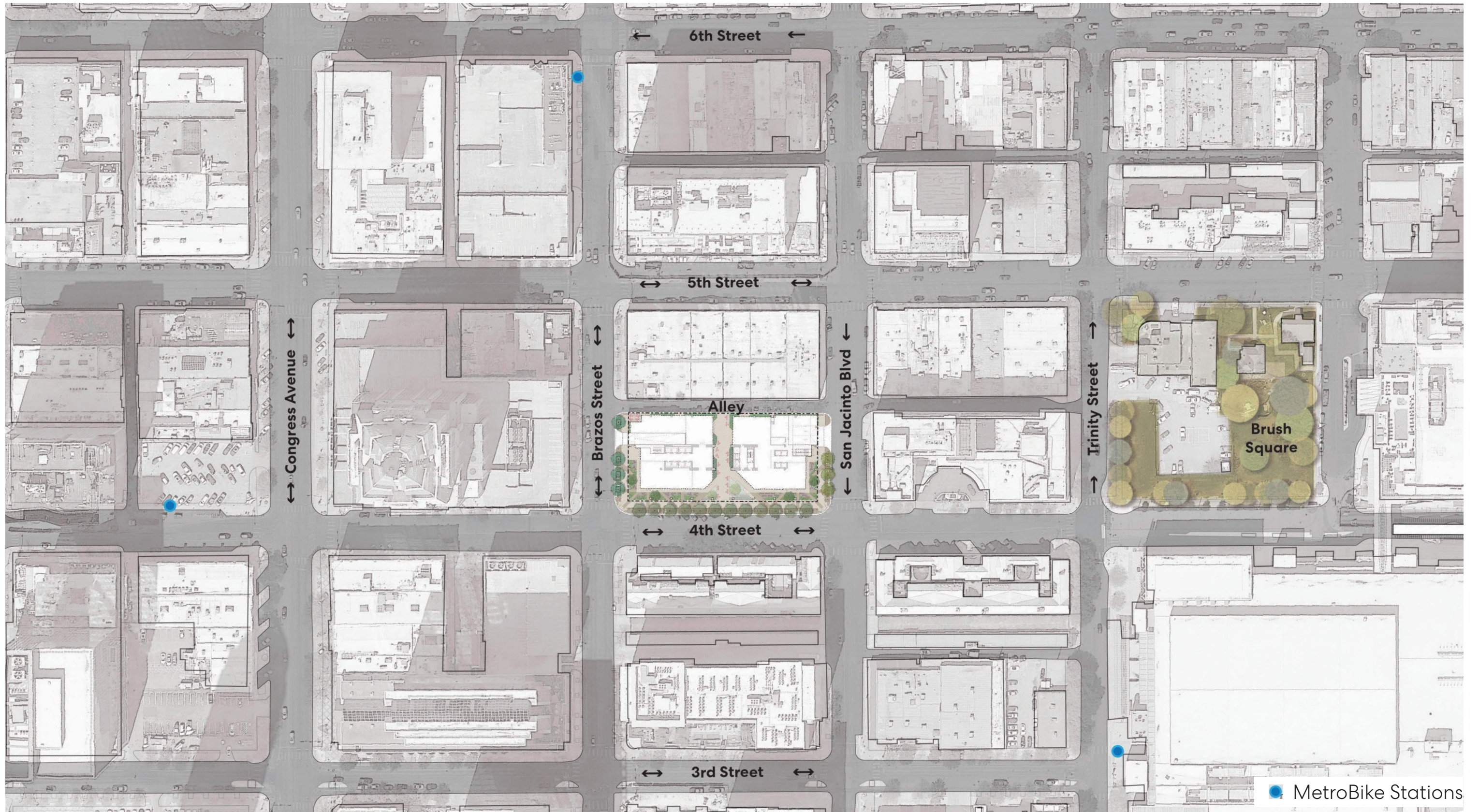
Site Information



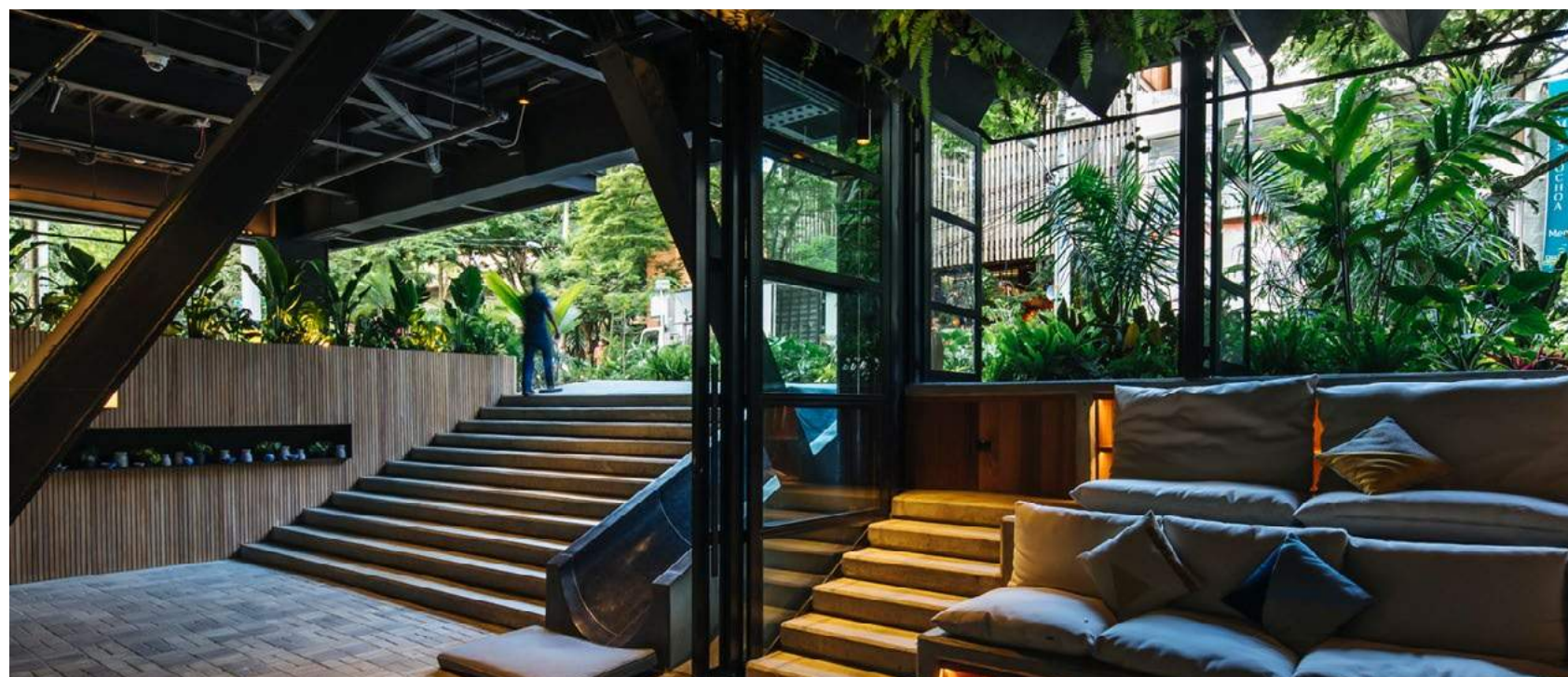
- Retail Districts- 
- Parks- 
- Water- 
- Metro Red Line- 
- Metro Blue Line- 
- Metro Gold Line 

The Blue Line light rail will operate for approximately 15-miles connecting 20 stations, running from downtown to the Airport providing service along East Riverside Drive across Lady Bird Lake to the Convention Center and west on 4th Street to Republic Square





Ground Level



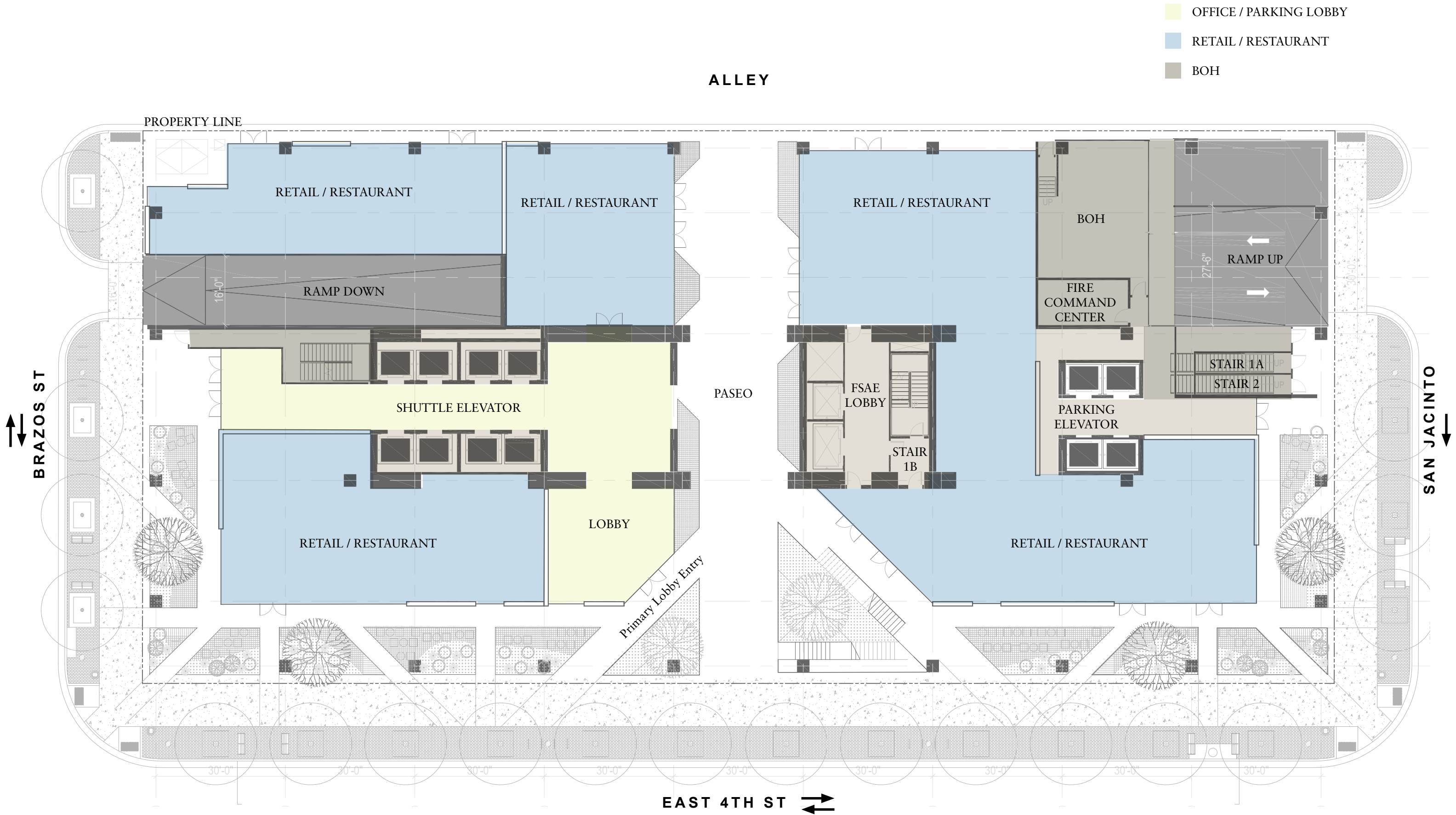
urban respite

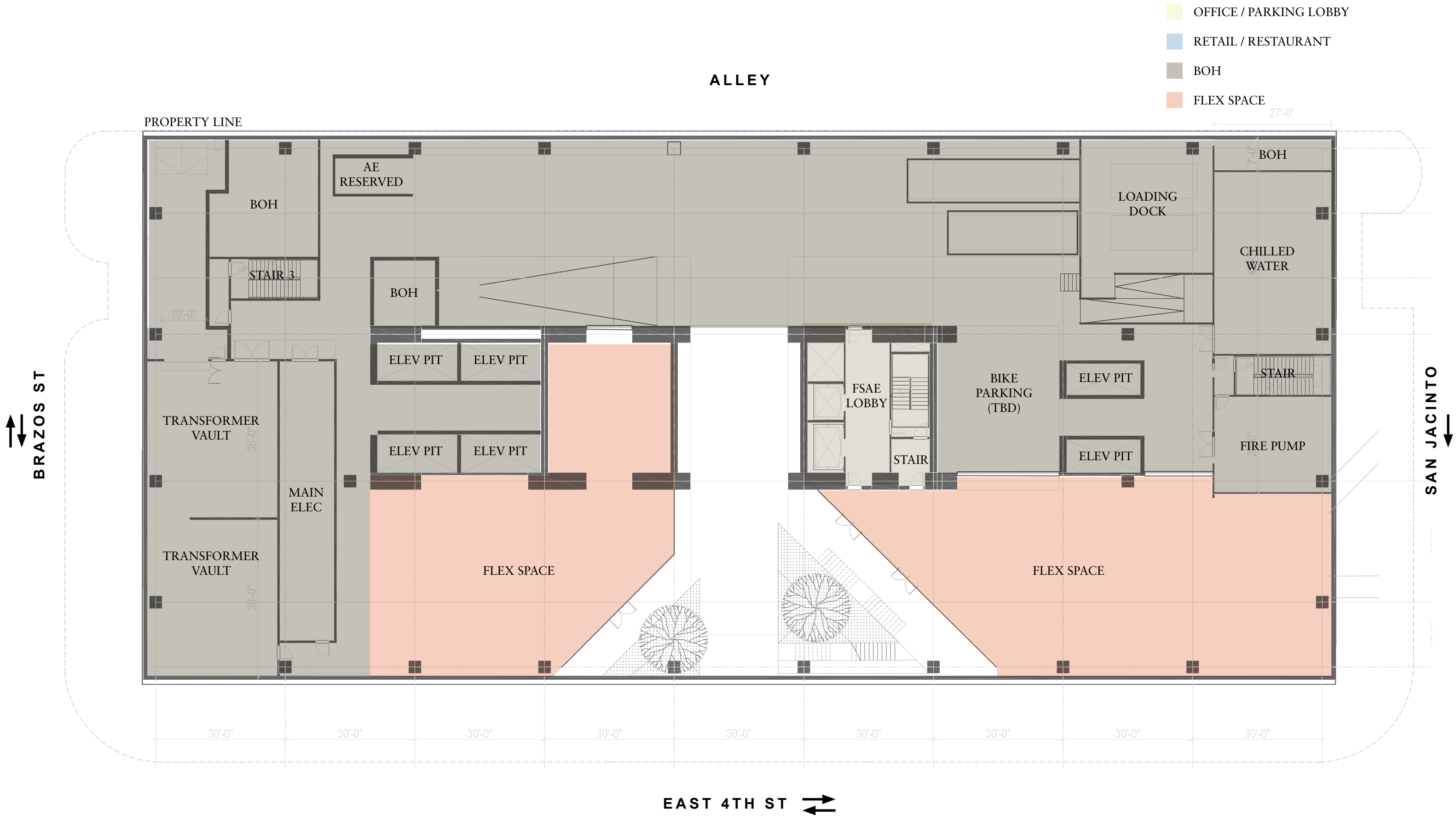
activated alley

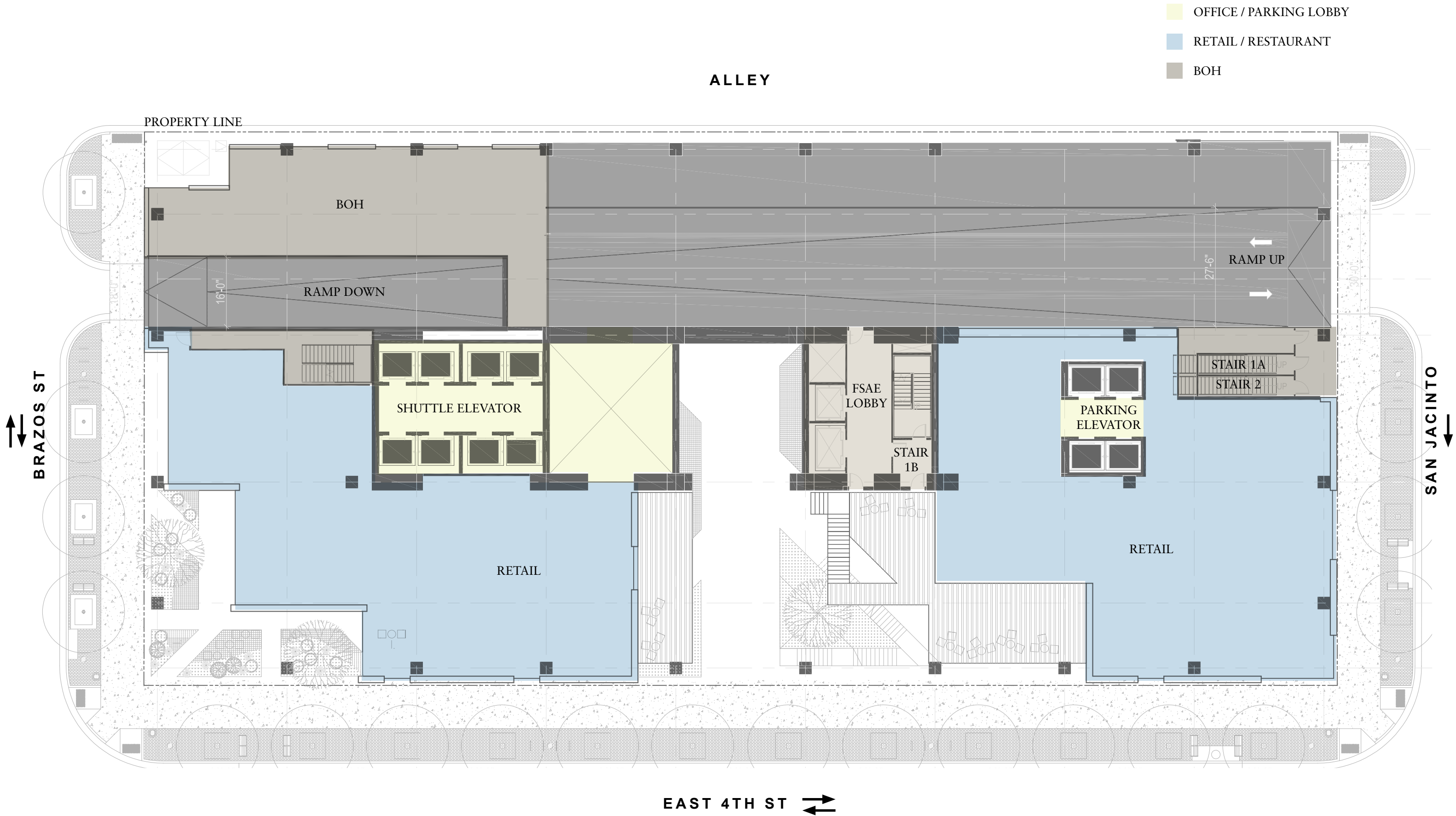


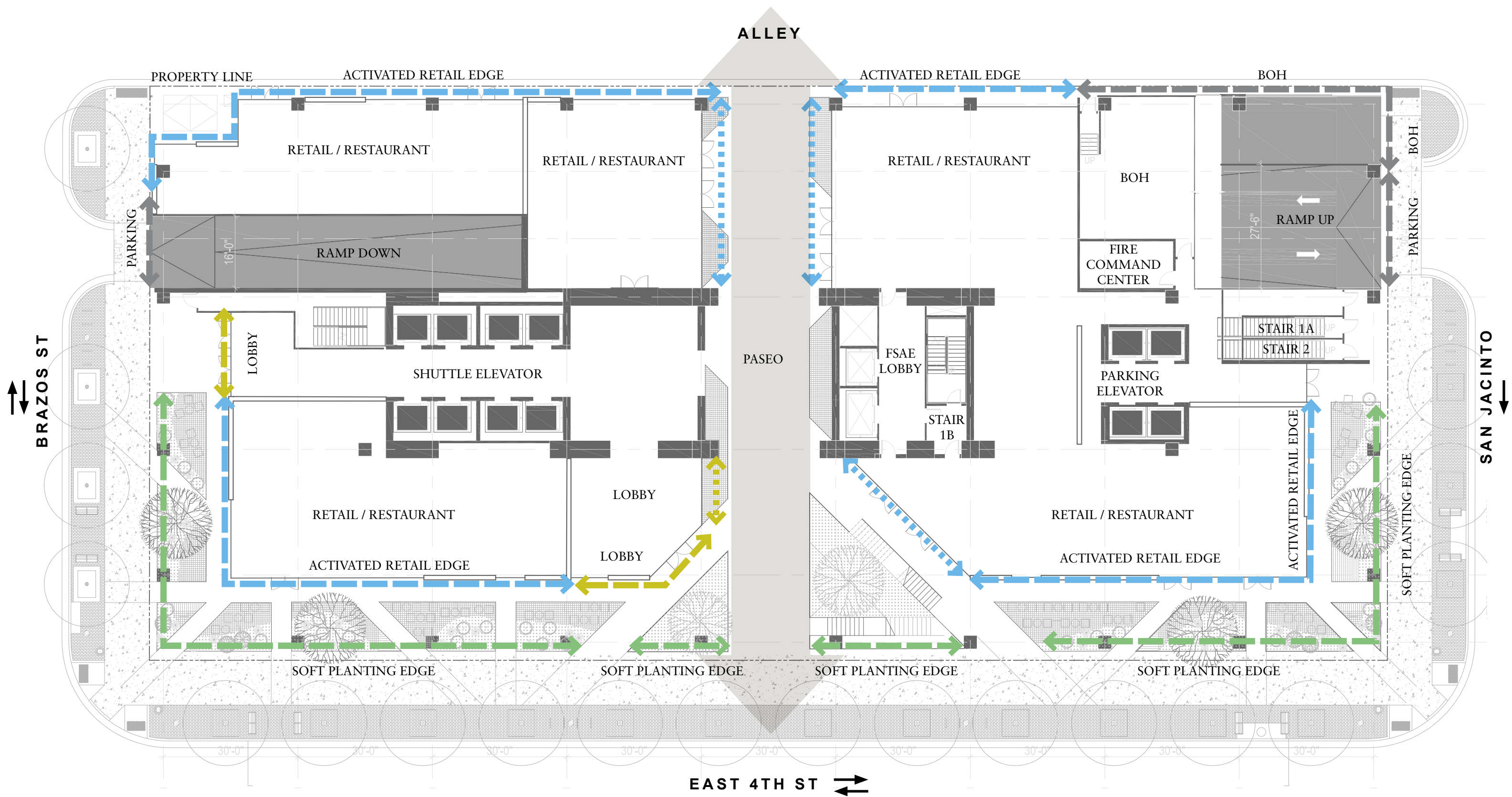
*art/
installation*

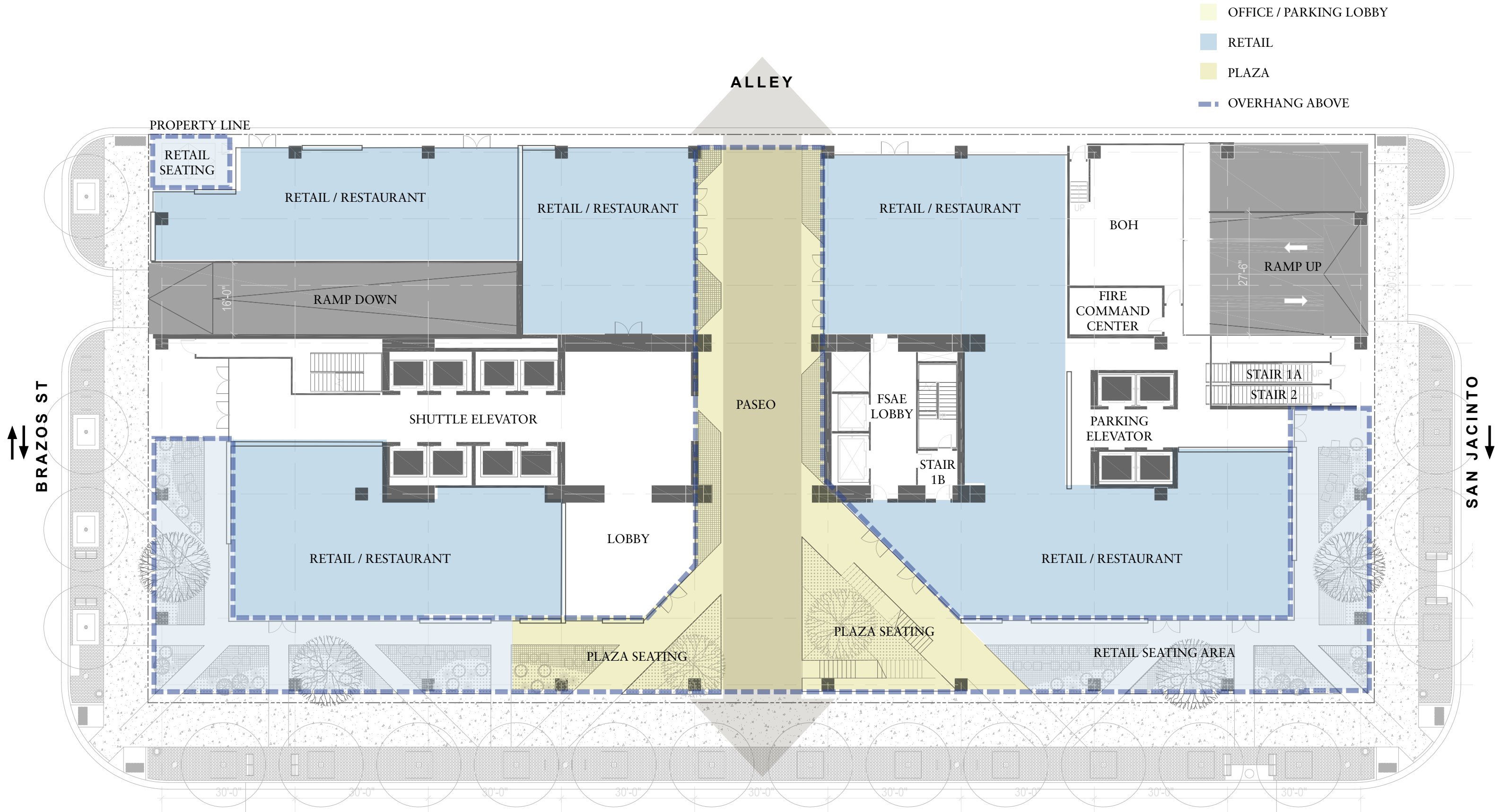












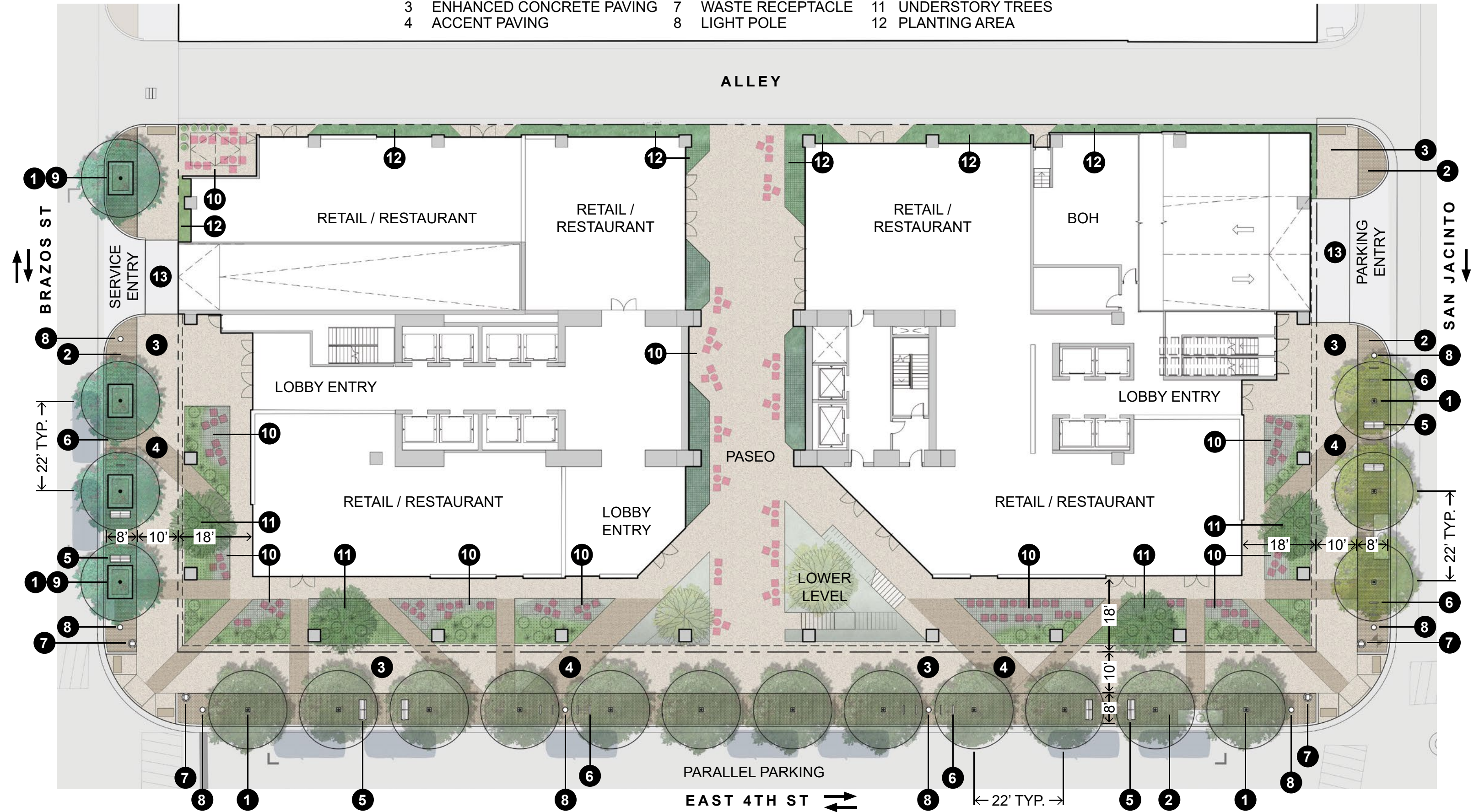


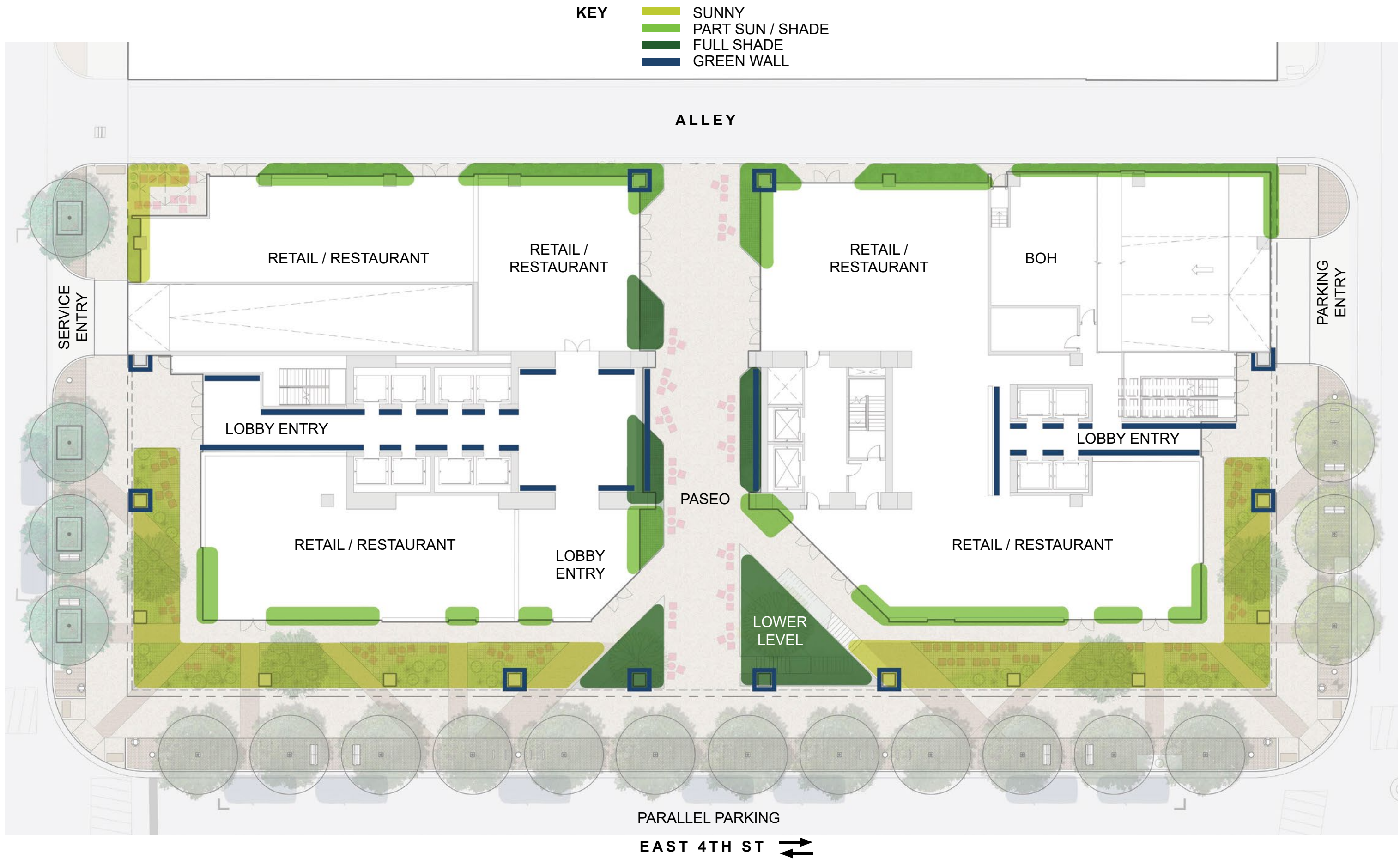




Streetscape | Landscape

- | | | | | | | | | |
|------------|---|--------------------------|---|------------------|----|-----------------------|----|-------------------------|
| KEY | 1 | GREAT STREETS TREES | 5 | BENCHES | 9 | RAISED PLANTER | 13 | MATERIAL CHANGE @ DRIVE |
| | 2 | UNIT PAVING | 6 | BIKE RACKS | 10 | GARDEN / SEATING AREA | | |
| | 3 | ENHANCED CONCRETE PAVING | 7 | WASTE RECEPTACLE | 11 | UNDERSTORY TREES | | |
| | 4 | ACCENT PAVING | 8 | LIGHT POLE | 12 | PLANTING AREA | | |







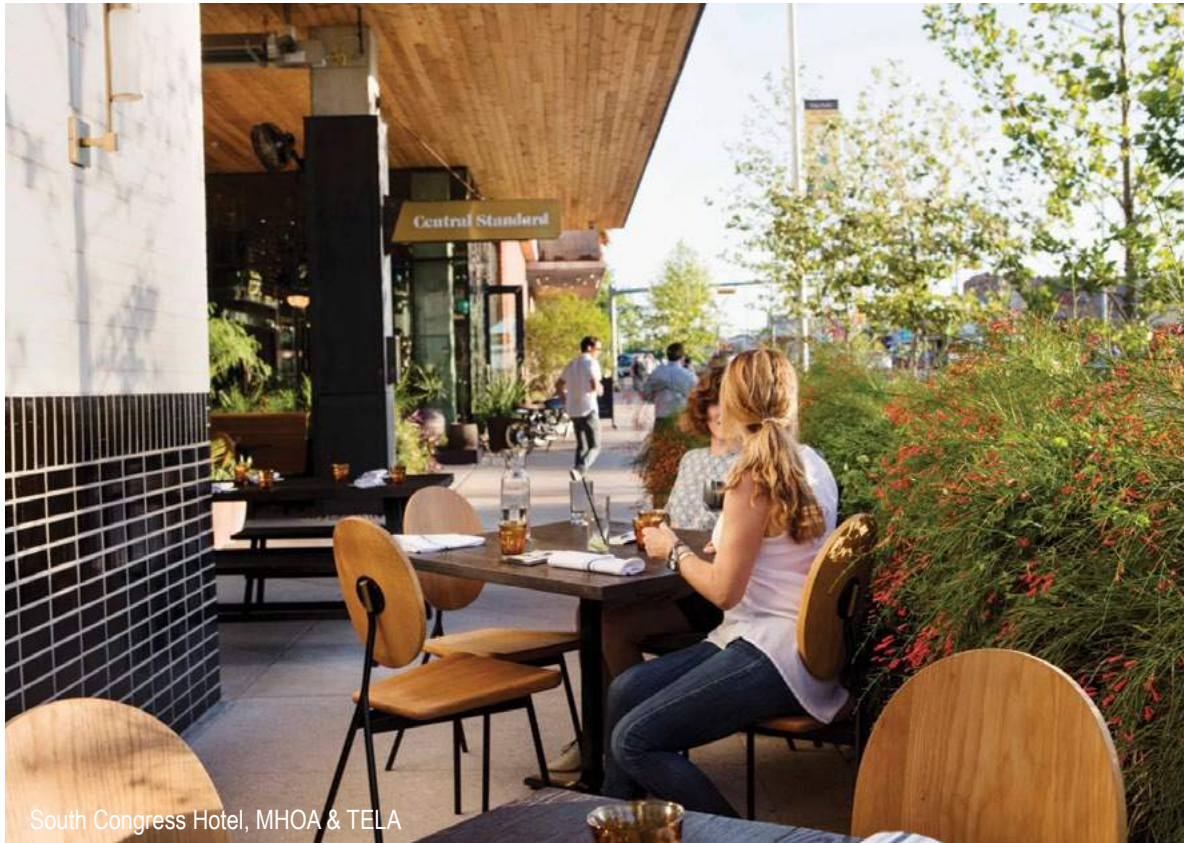
South Congress Hotel, MHOA & TELA



South Congress Hotel, MHOA & TELA



Enhanced Paving



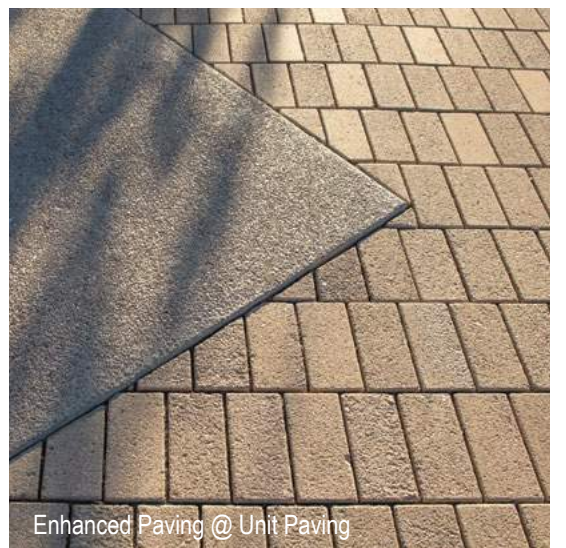
South Congress Hotel, MHOA & TELA



Alamo Heights Residence, TELA



Enhanced Paving



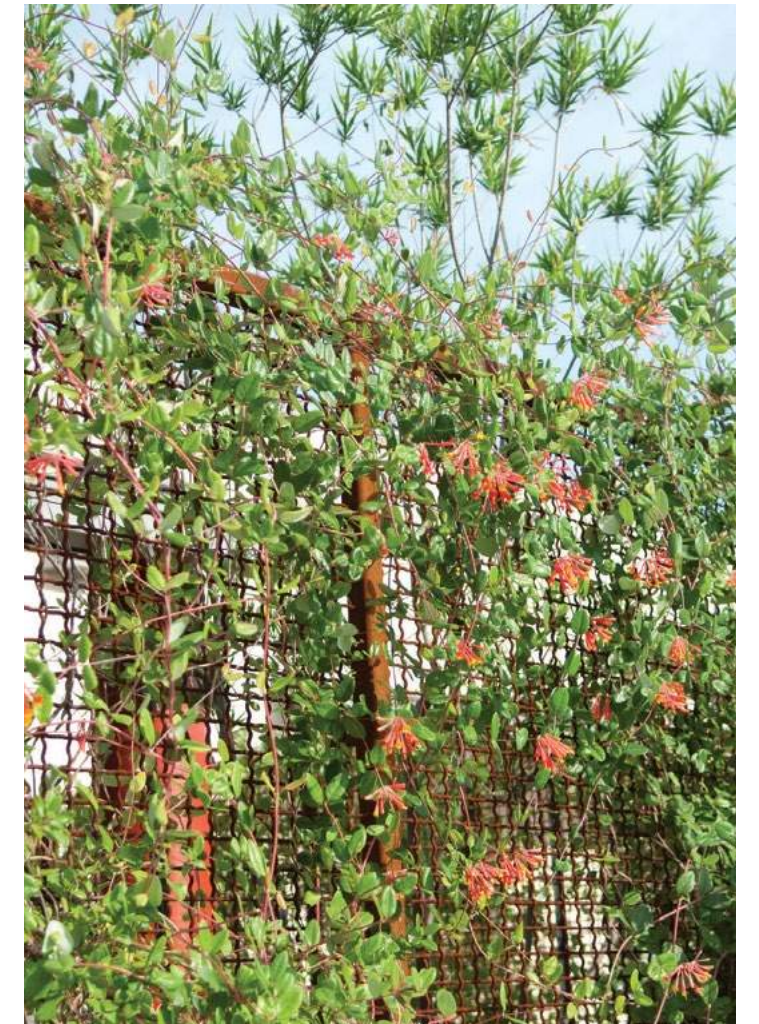
Enhanced Paving @ Unit Paving



Habitat Horticulture, Encasa



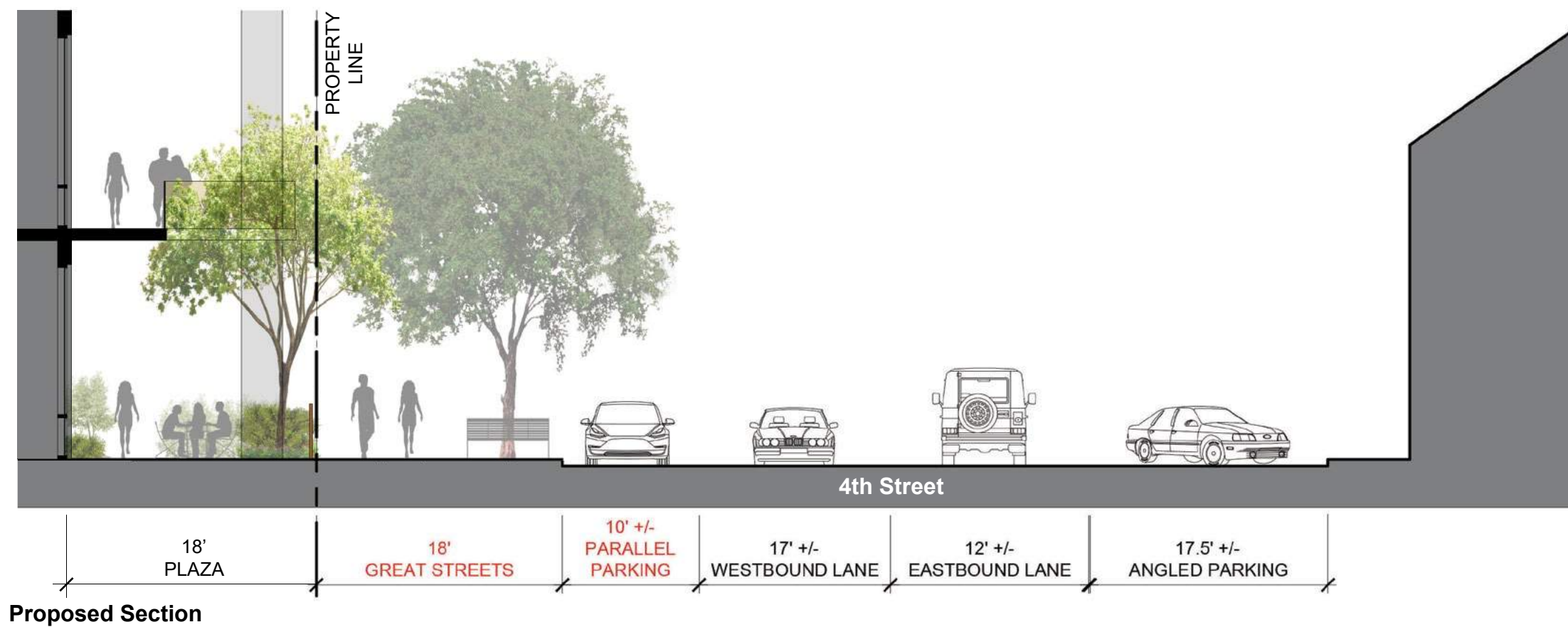
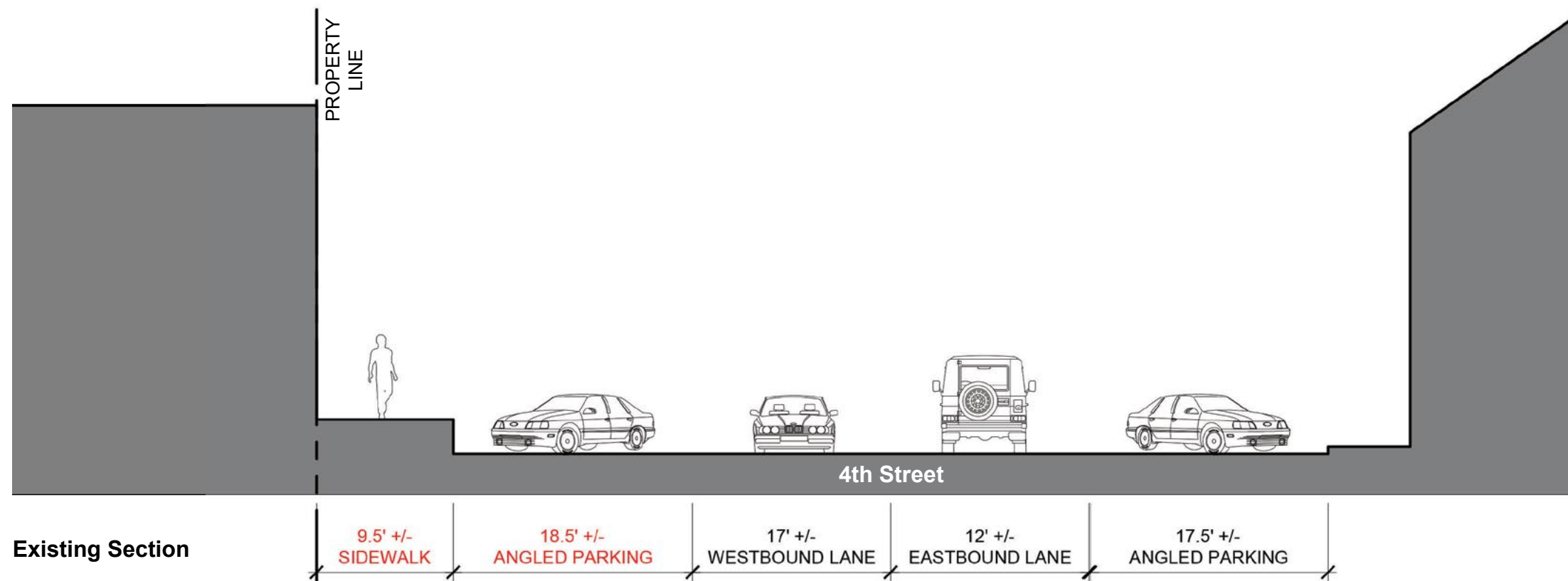
Habitat Horticulture, Foundry Square III

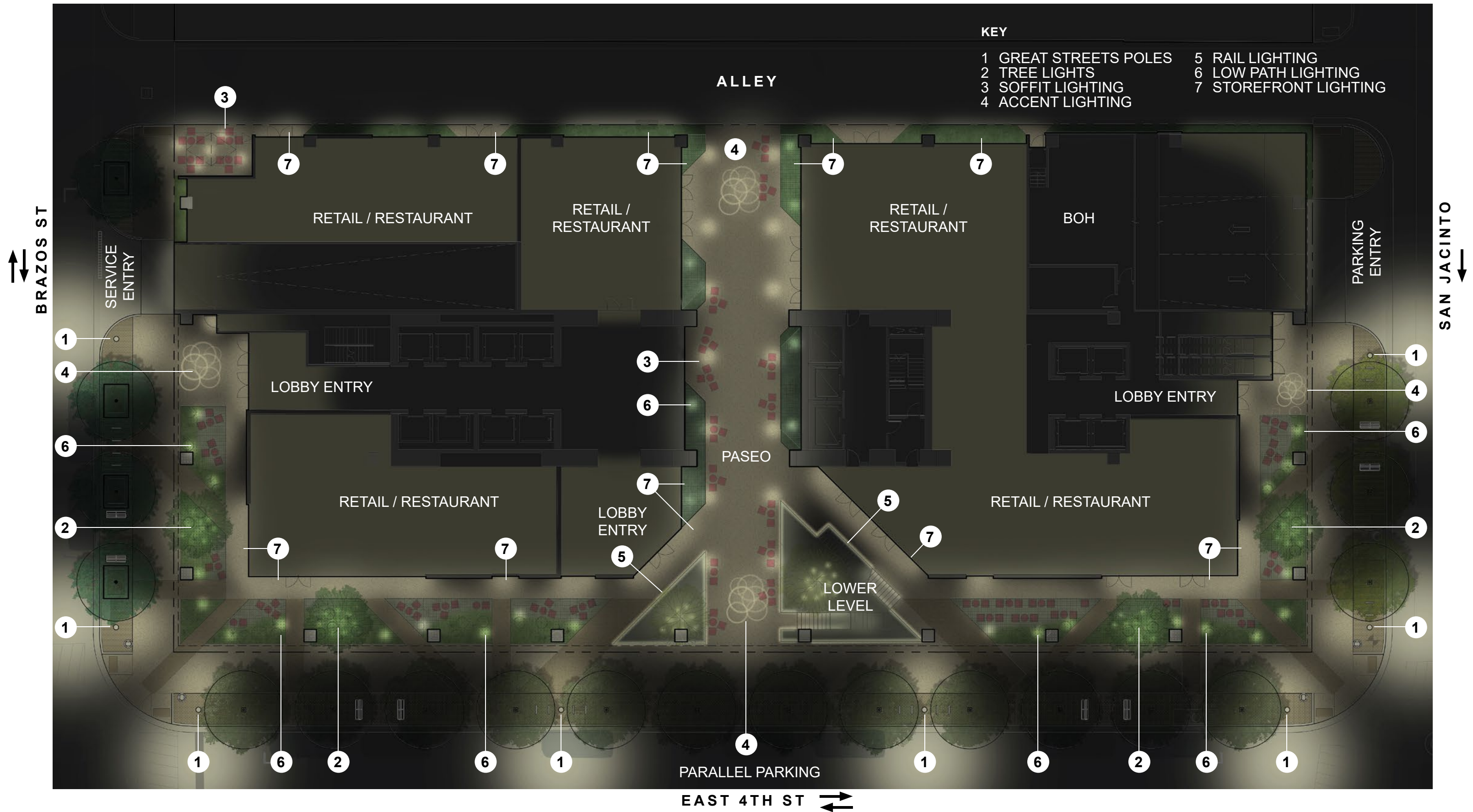


South Congress Hotel, MHOA & TELA

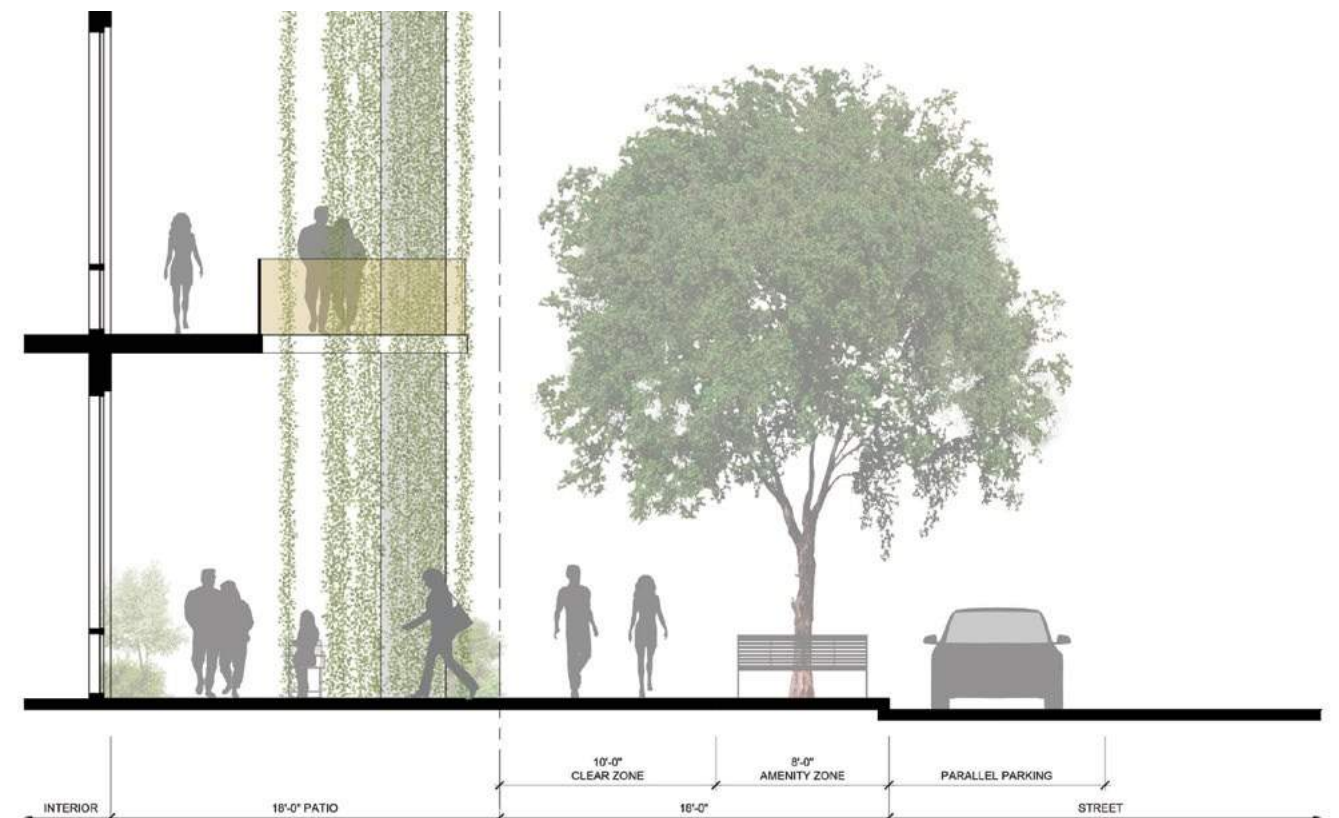
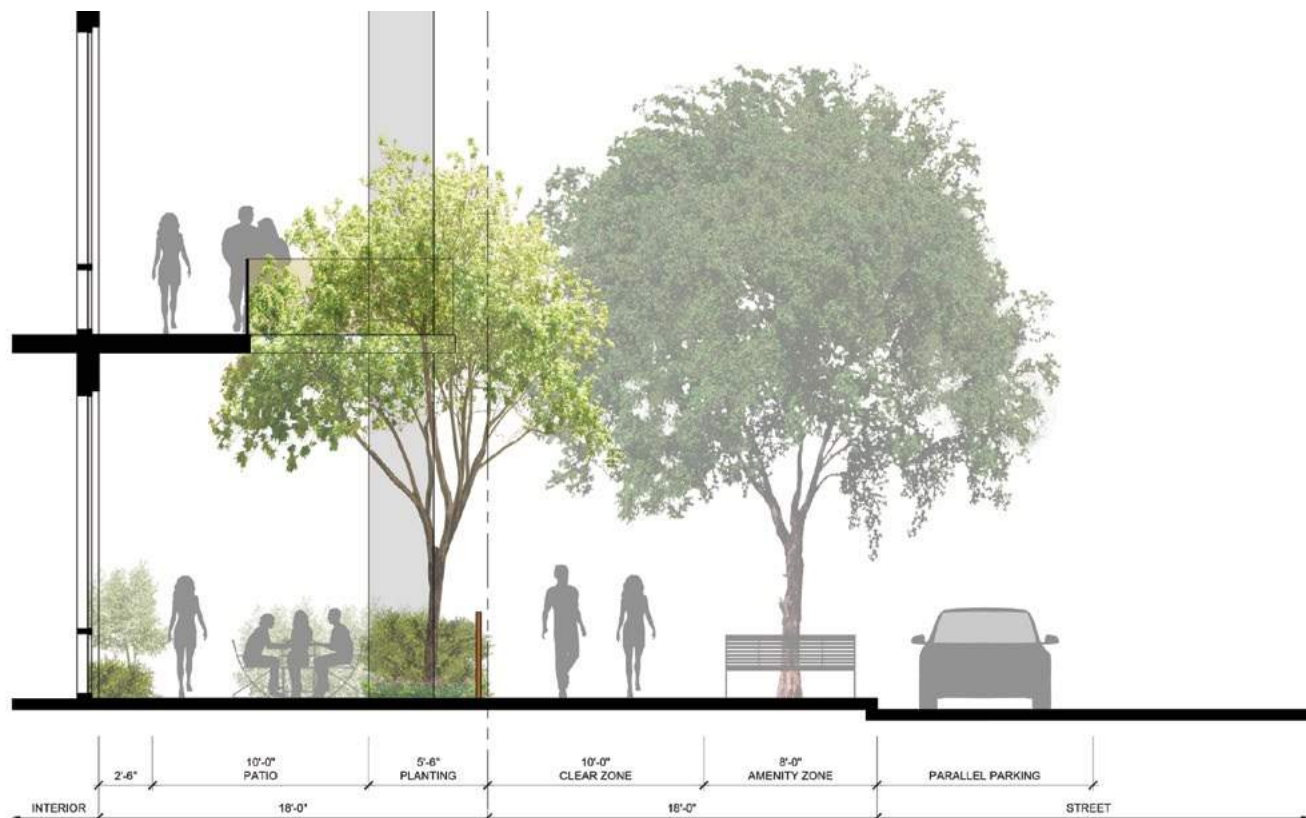
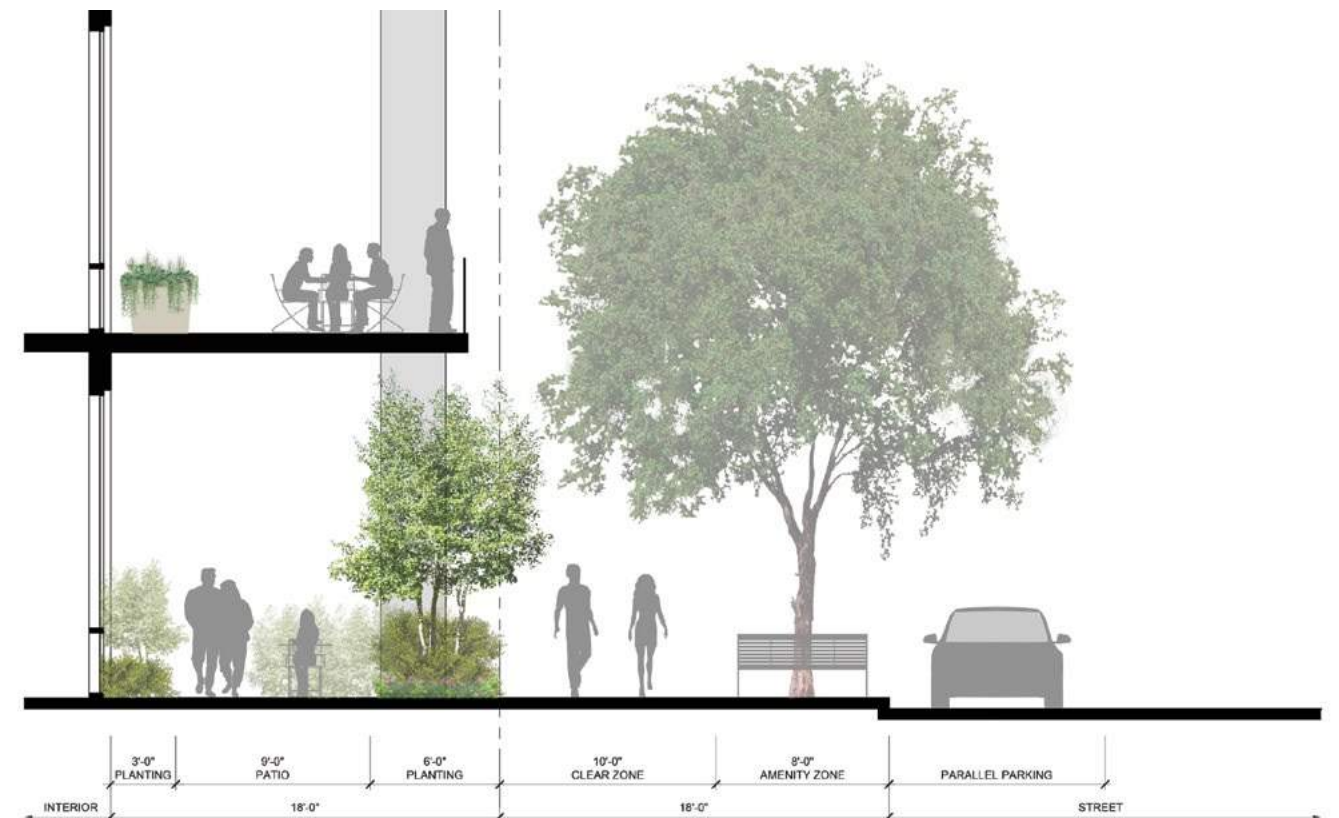
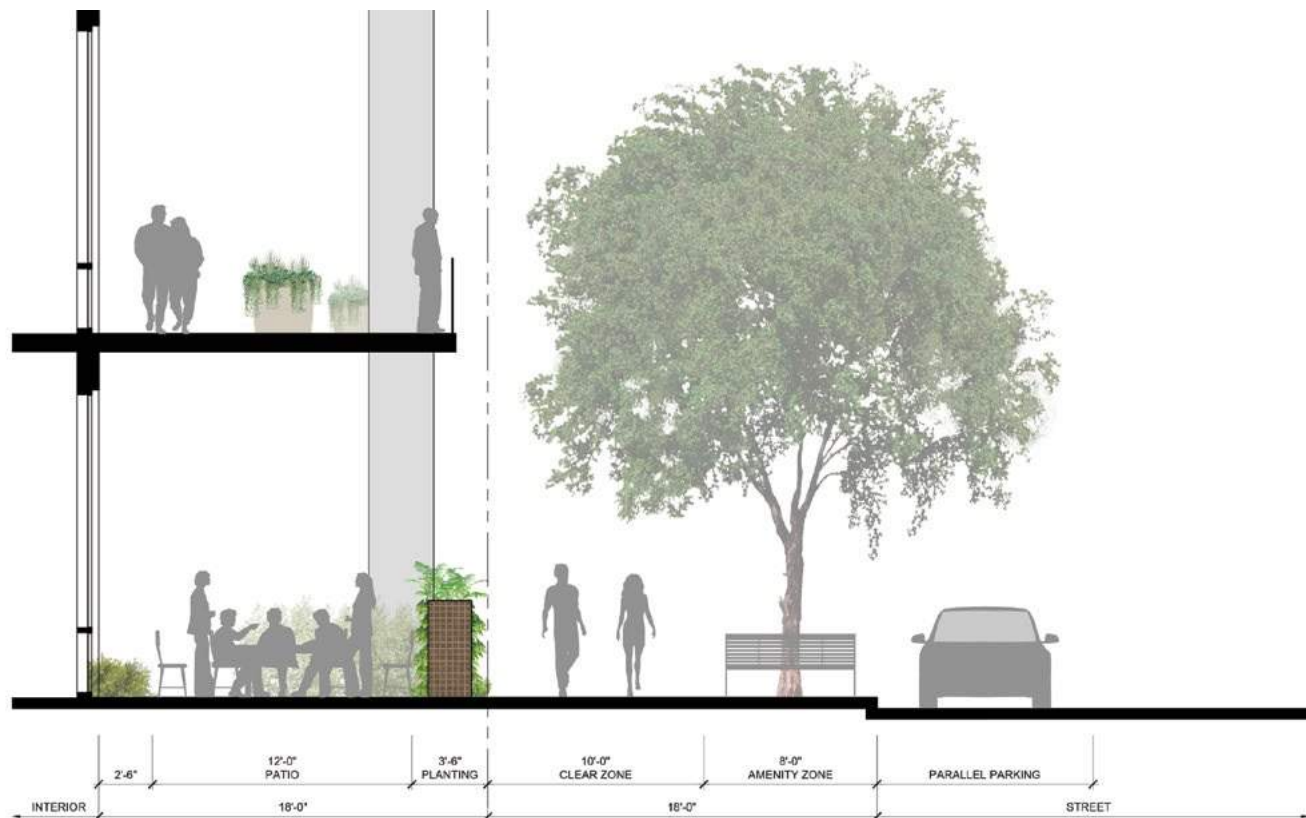


South Congress Hotel, MHOA & TELA









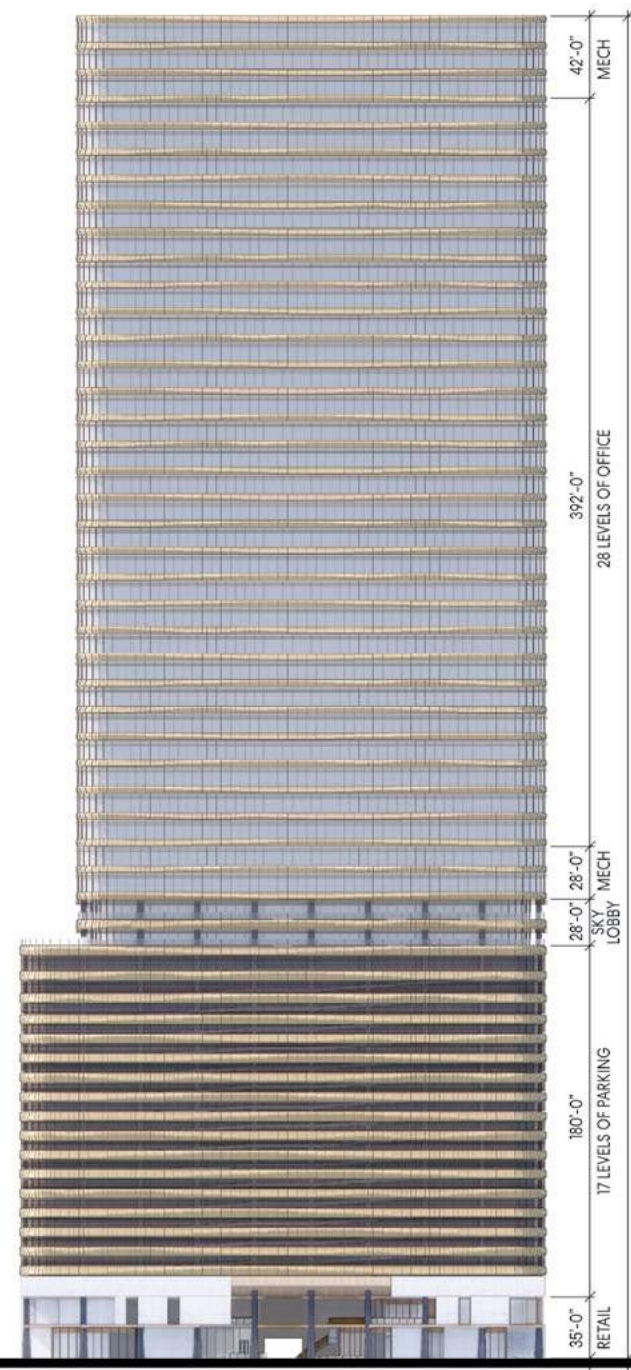
Building



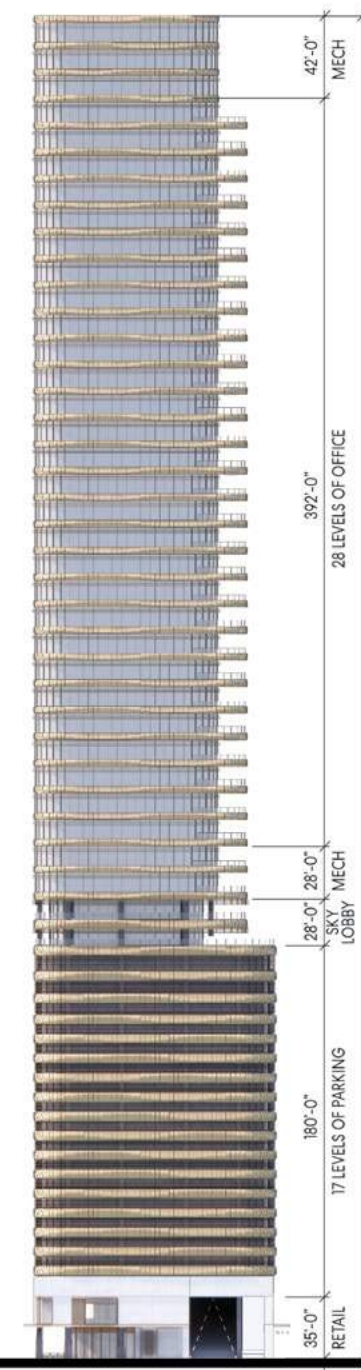
Total Parking: 1,262



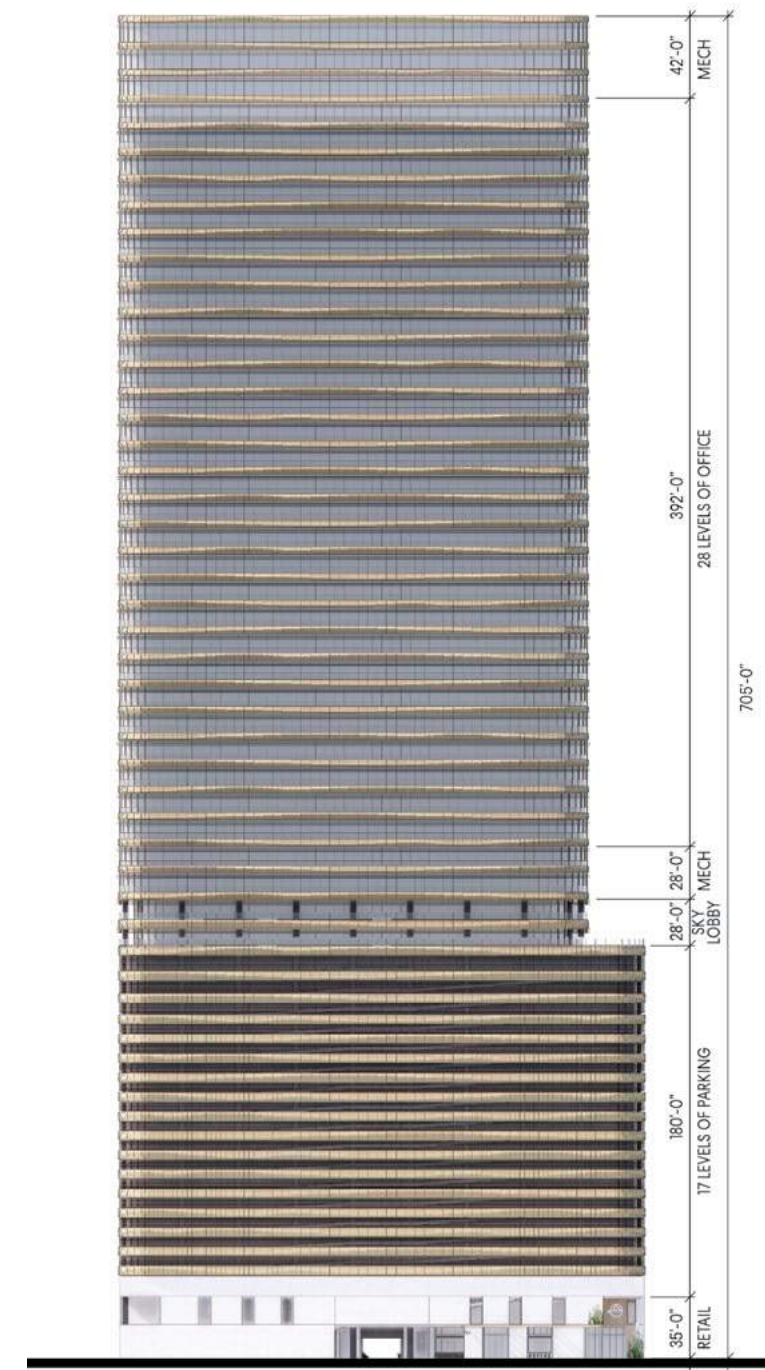
West Elevation



South Elevation



East Elevation



North Elevation





