

Historic Precedents - Austin Landmarks: W. 32nd St., Austin, TX



105 W. 32ND ST.
Padgett - Painter House



106 W. 32ND ST.
Spurgeon Bell House



108 W. 32ND ST.
Webb - Simms - Aldridge House



401 W. 32ND ST.
Dr. Walter Bacon Black House



609 W. 32ND ST.
McCaleb House



613 W. 32ND ST.
McCallum House
National Register Property

1519 W. 32nd St. Existing House

1930s AMERICAN COTTAGE (CAPE CODE STYLE)

CHARACTER OBSERVATIONS

- Post & Beam, Rectangular footprint
- Side gable roof
- Little ornamentation
- Painted Lap Siding with Mitered Corners
- Front facade symmetrical about the entry
- Evenly spaced, double hung windows with divided lites
- Painted wood columns and beams with rectilinear trim

ADDITIONAL OBSERVATIONS NOT NECESSARILY RELEVANT TO THE 1930s COTTAGE STYLE

- No significant landscape features or prominent front approach
- Concrete porches
- K-Style gutters and downspouts



Painted Double Hung Windows
with Divided Lites



Painted lap siding with mitered
corners.



Painted columns and beams w/ minimal trim. Concrete
patio. K-Style gutters and downspouts. Side gable w/ steep
roof.

1519 W. 32nd St.

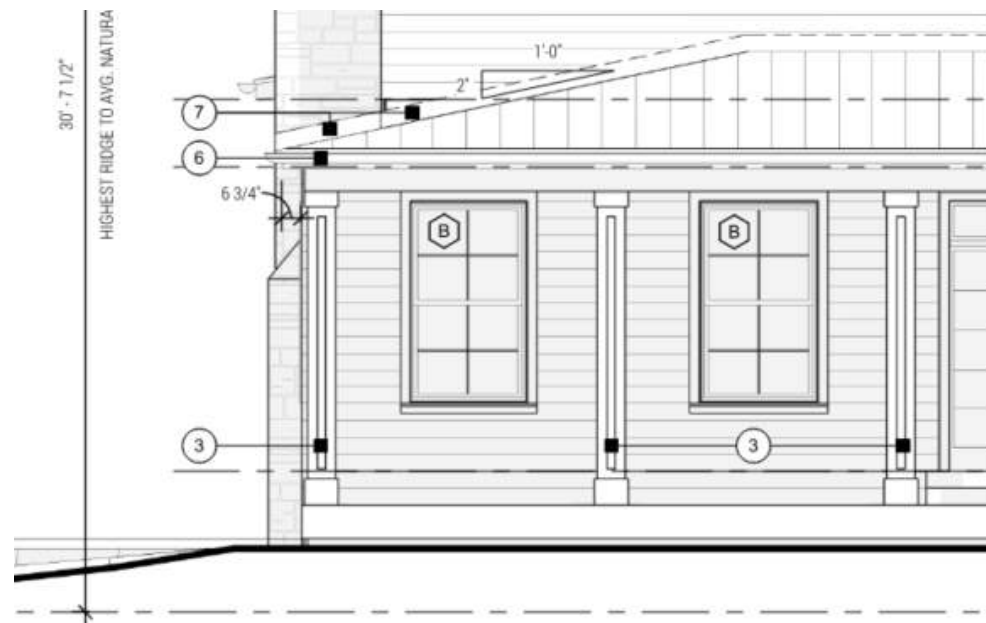
Proposed Improvements

1930s AMERICAN COTTAGE (CAPE CODE STYLE) CHARACTER REVERENCE

- Post & Beam, Rectangular footprint
 - Existing Structure being repaired and reused; rectangular footprint remains in proposed design
- Side gable roof
 - Remains expressed in proposed improvements
- Minimal ornamentation
- Painted Lap Siding with Mitered Corners
 - Existing to be replaced with Artisan Lap Siding with mitered corners
- Front facade symmetrical about the entrance
- Evenly spaced, double hung windows with divided lites on both levels with symmetrical dormers
- Painted wood columns and beams with rectilinear trim
- Concrete Porches to remain
- New Half-Round Gutters and downspouts



Existing stone chimney to be repaired and extended to
Side gable
Existing porch roof height to remain
Painted columns and beams w/ minimal trim



Double hung windows with divided lites. Painted lap siding with mitered corners. Painted wood trim: minimal ornamentation



Symmetry about the front entry with evenly spaced columns and windows