

BEVERLY S. SHEFFIELD NORTHWEST DISTRICT PARK POND CONCEPT BRIEFING

PARKS AND RECREATION BOARD MEETING

Charles Mabry, Associate Project Manager, PARD

Drew Carman, PLA, Director of Park Planning & Design, RVI

October 26th, 2021





POND BACKGROUND

The duck pond, a beloved resource to the community, has long suffered from stagnant water, invasive species, and poor water quality.

The pond presents many challenges, but it also presents an opportunity to make not only a functioning water & habitat resource, but a design focal point of the park, providing passive recreation opportunities.



PROPOSED OPTIONS

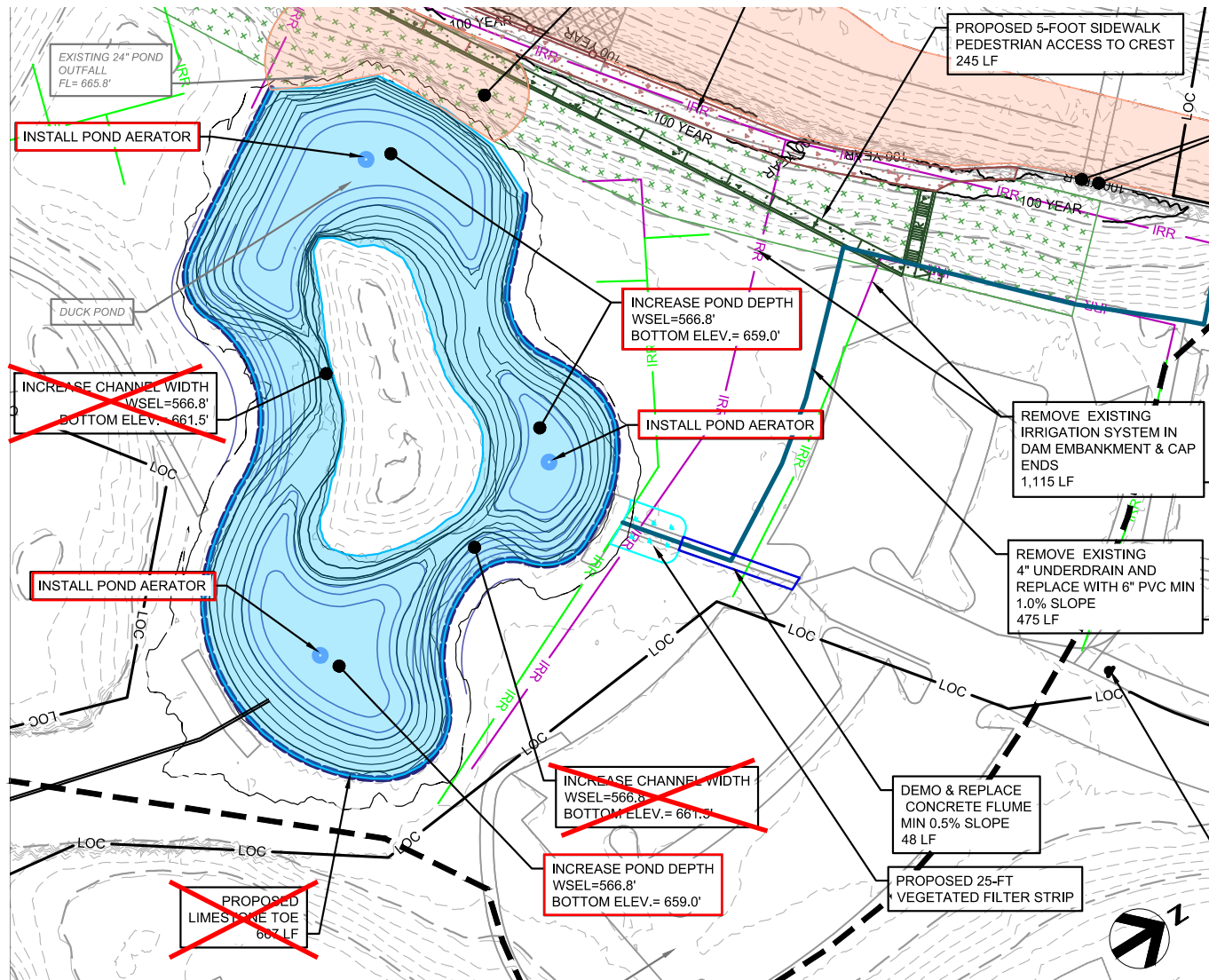
1. **Minimal disturbance** (aeration, selective excavation for depth in main pools)
2. **Dam PER recommendations** (prior recommendations; aeration, excavation, limestone toe & water quality wet pond options 2 & 3)
3. **Vision Plan recommendations** (further comprehensive study, aeration, native riparian vegetation planting, preserve all existing trees)

(Note: the pedestrian circulation & boardwalk proposed in the Vision Plan was designed to accommodate any of these options)



OPTION 1 - MINIMAL DISTURBANCE

Aeration, **selective** excavation for depth in main pools. (Dam PER plan shown below for clarity)



This option would keep the pond under PARD for operation and maintenance.

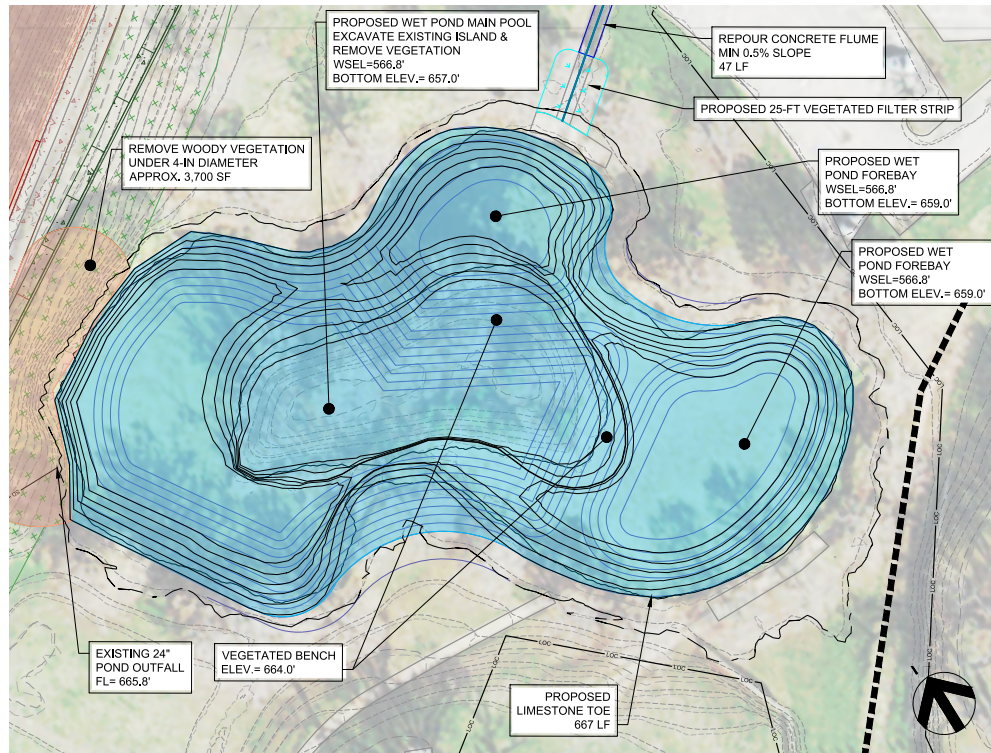
The minimal disturbance option would **not** include increasing channel width or proposed limestone toe, as shown here.



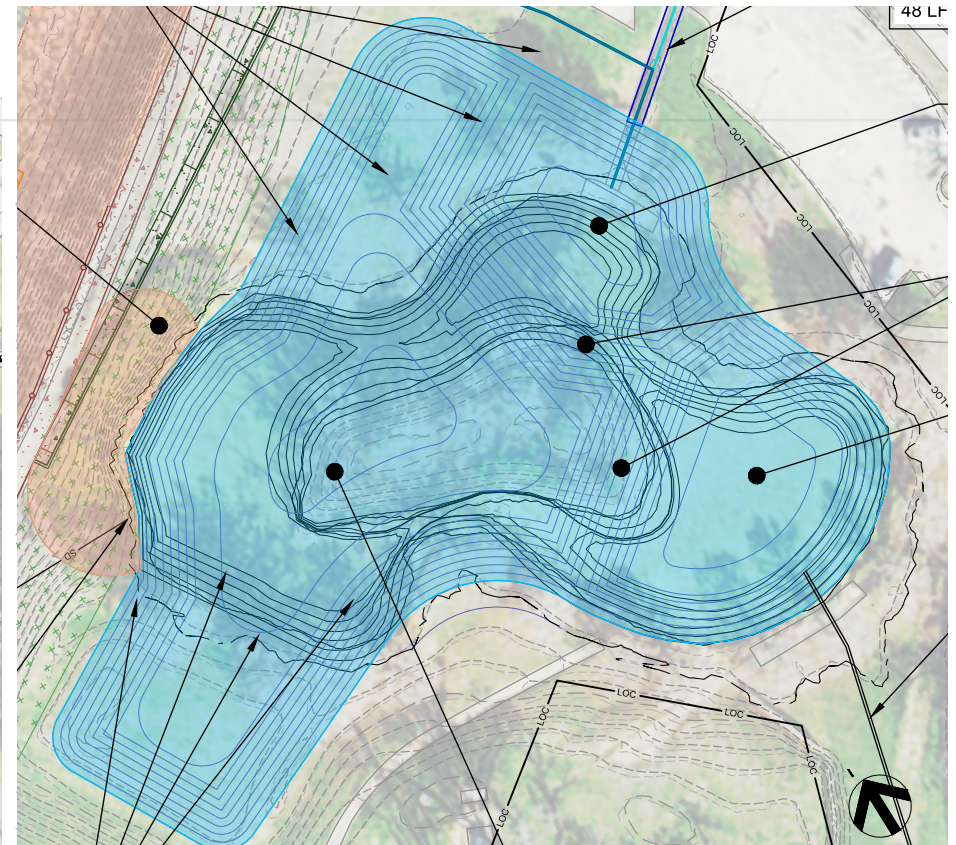
NORTHWEST PARK DAM
SITE PLAN B

OPTION 2 - DAM PER RECOMMENDATIONS

Site Plan B, Wet pond concepts 2 & 3 (note orientation change, NTS)



NORTHWEST PARK DAM
WET POND - ALTERNATIVE 2



NORTHWEST PARK DAM
LARGE WET POND - ALTERNATIVE 3

These options could potentially place the pond under Watershed Protection for operation and maintenance.

Although both would provide functional water treatment & water quality improvements, they are not recommended.

Both would cause some or most of the Bald Cypress' surrounding the pond to be lost due to expanded grading and footprint. These options would also remove the dry island and all trees within it, (the vision plan design team never considered removing this island).

Public input was not favorable to ANY loss of the Bald Cypress trees surrounding the pond or removing the island.

OPTION 3 - VISION PLAN RECOMMENDATIONS

Further study through a comprehensive report, pool aeration & native riparian vegetation, pedestrian circulation improvements

This recommendation keeps the pond under PARD for operation and maintenance.

An **in-depth study** should be undertaken to address improvements to the pond. A full accounting of the existing hydrology, geotechnical conditions, and the biological and ecological systems at work in the pond should take place. All surrounding topography and trees should be surveyed along with the pond bathymetry. The report findings would guide future pond improvements.

Maintains the **pond footprint and preserves all existing trees.**

Pond **aerators** in each pool (3) should be installed.

The **native grass and wildflower plantings around the edge** is a selective mix of riparian species known to succeed on fringe conditions around ponds and detention areas. The mix is specifically chosen to help stabilize erosive conditions while improving habitat along the water edge.

The **boardwalk** is meant to give guided access to the pond's edge. Because it provides a more agreeable way to experience the pond up close, most visitors will use it rather than walking over the riparian vegetation surrounding the rest of the water.



NEXT STEPS:

The final draft of the vision plan is anticipated to be presented to the Parks and Recreation Board on November 30th for review and recommendation to the Director for approval.

For more information, please visit the project website or QR code here:

<http://www.austintexas.gov/sheffieldNWpark>



RVi
Open the Outdoors