

Temporary Working Space Easements
(TWSE) Proposed for Acquisition
Located at 6801 River Place Blvd



This product is for informational purposes and may not have been prepared for or be suitable for legal, engineering, or surveying purposes. It does not represent an on-the-ground survey and represents only the approximate relative location of property boundaries.

This product has been produced by the City of Austin for the sole purpose of geographic reference. No warranty is made by the City of Austin regarding specific accuracy or completeness.

Produced by M McDonald, 10/13/2021

- Proposed TWSE Part 1

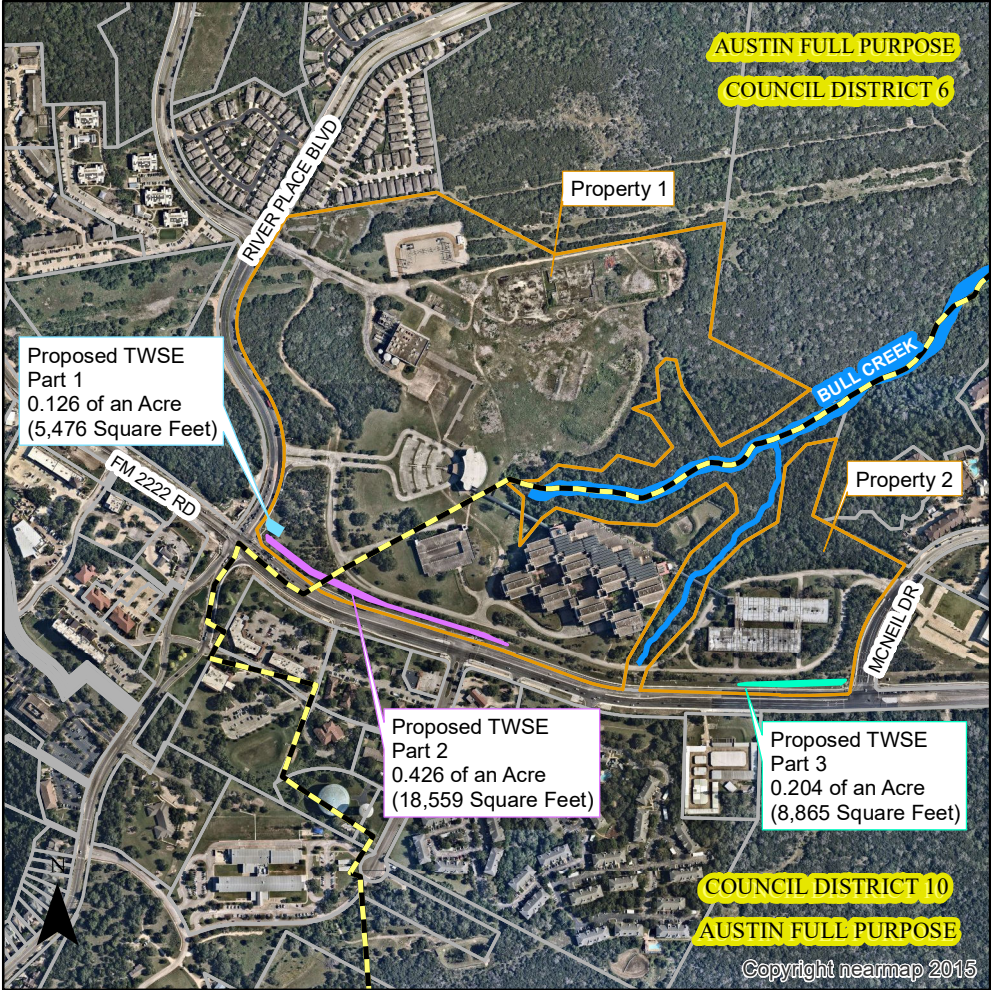
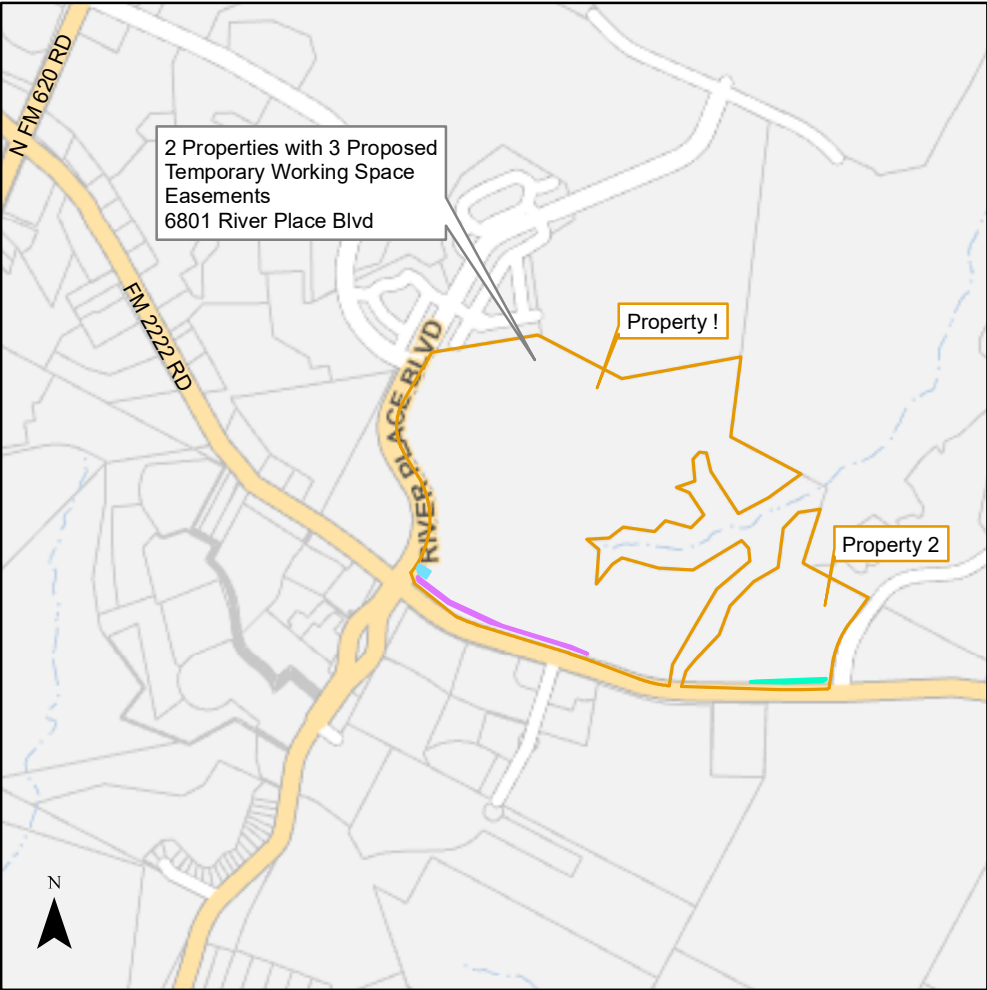
Proposed TWSE Part 2

Proposed TWSE Part 3
- Properties with Proposed Easements

City Council Districts

City of Austin Property Lot Lines

Creek Centerline



0 2,000 4,000 Feet

0 1,000 2,000 Feet