

Water Forward 2024 Planning Update



Updates since May 2021

- Continued refinement of scope and technical work related to demographics and demand forecasting
- Finalized Climate and Hydrology Analysis scope and developed agreement with UT
- Revised Tasks 6, 7, 8, and 9 in alignment with updated methodology (to be discussed)



Key methodology changes from WF18

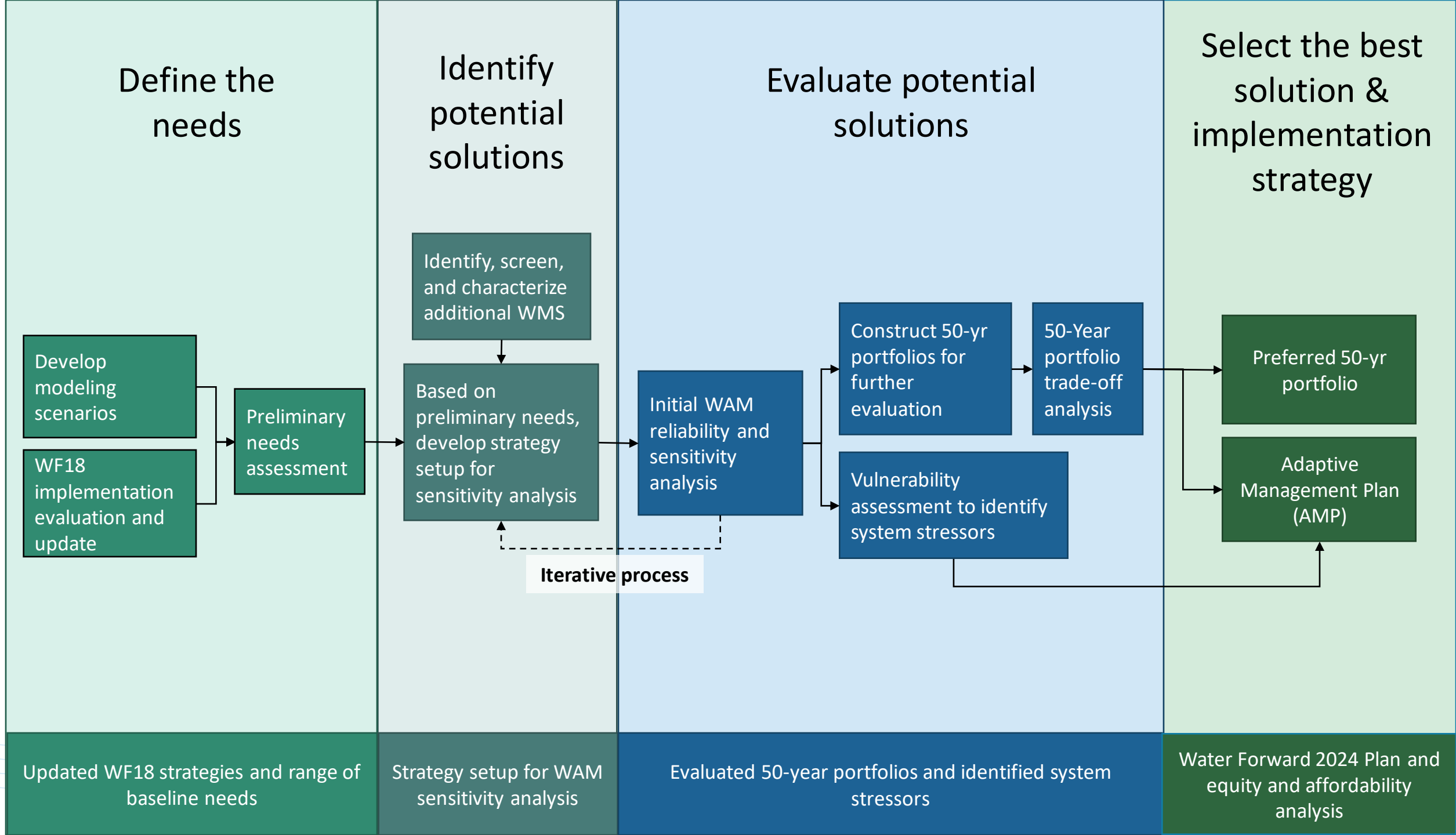
- ◆ Describing WF24's relationship to related AW and COA efforts
- ◆ Clearer approach to water needs identification
- ◆ Updated characterization of WF18 and new strategies
- ◆ Better alignment with regional water planning considerations
- ◆ Development of Equity and Affordability Tool
- ◆ More robust approach to addressing risk and uncertainty



Addressing uncertainty

- ♦ Deep uncertainty is uncertainty that cannot be predicted or well understood using standard statistical methods
 - Rather than predicting the most likely future or deriving a plan that performs best on average, deep uncertainty approaches seek robust strategies that perform well across a wide range of plausible assumptions about the future
- ♦ WF24 changes to address uncertainty
 - Use of ranges in to define modeling scenarios and strategy yields
 - Updated approach to portfolio development and evaluation
 - Development of robust adaptive management plan





Water Forward 2024 (WF24) Project Plan

Task 1 - Project Management

Task 2 - Community Engagement

Task 3. Refine planning methodology

Task 4. Forecast baseline water demands

Task 5. Update climate and hydrology analysis

Task 6. Identify water resource needs

Task 7. Identify, screen, and characterize strategies

Task 8. Develop and evaluate 50-yr water resource portfolios

Task 9. Develop plan recommendations and 100-yr adaptive management plan

1/2022

1/2023

1/2024



Task 2: Community Engagement

• Key Deliverables:

- Updated mission statement, guiding principles, plan objectives
- Equity and Affordability Roadmap
- Education and Engagement Plan

• Anticipated community engagement touchpoints

- May 2021 – gathering input on community values
- Winter 2022 – gathering input on water management strategies

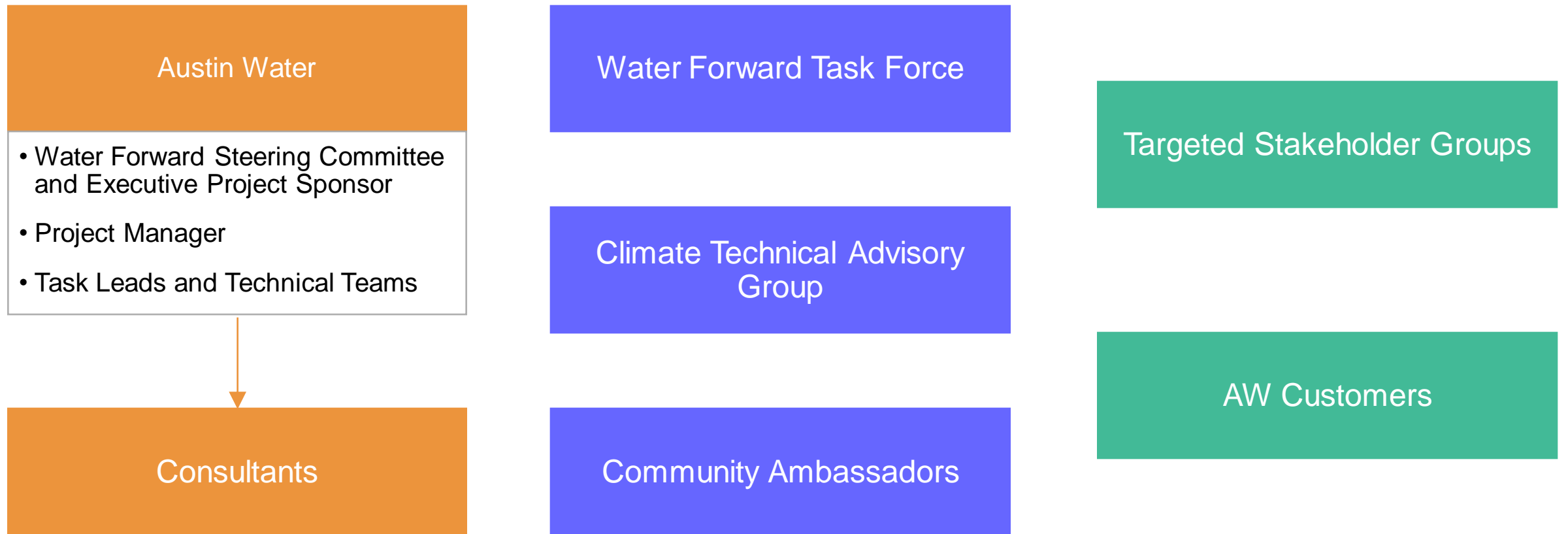


Task 2: Community Engagement

- Community Ambassadors
 - Open Application (November 8th-January 7th)
- “Water Forward University”
 - Introduction series
 - Overview of Water Resource Planning
- Equity Grounding
 - Review mission, guiding principles, and objectives
 - Baseline for Equity and Affordability
- EARM development
 - Community pillars for tool



Roles & Responsibilities



Next Steps

- January 2022 – Kickoff for WF24 Update Process
 - Staff updates on task progress for
 - Community Engagement
 - Disaggregated Demand Modeling
 - Climate and Hydrology Analysis
- Early 2022 activities to include:
 - Equity Grounding
 - Equity and Affordability Roadmap development
 - Updates to mission statement, guiding principles, objectives



An aerial photograph of a wastewater treatment plant. In the foreground, there are several large, rectangular concrete basins with metal walkways and railings. Beyond the basins is a large green field. In the far background, a dense line of trees separates the plant from a city skyline under a cloudy sky.

Thank you!

