

**HISTORIC LANDMARK COMMISSION  
DEMOLITION AND RELOCATION PERMITS  
NOVEMBER 15, 2021  
PR-2021-155277; GF-2021-164899  
2412 VISTA LANE**

**PROPOSAL**

---

Demolish a ca. 1948 house.

**ARCHITECTURE**

---

One-story L-plan house with brick veneer and hipped roof.

**RESEARCH**

---

The house at 2412 Vista Lane was built in 1948 for Edmund “Jack” Revell and his family. Revell was an interior designer and the owner of Revell & Company, a furnishing store and design business with storefronts on West 14<sup>th</sup> Street and in Houston. Revell was one of the first Texans to become a member of the American Institute of Interior Design (then the American Institute of Decorators) and served on the Board of Directors of the Texas Fine Arts Association. He was president of the Austin Heritage Society, which later became Preservation Austin.

Revell worked on hundreds of projects in Austin and surrounding cities, and his prestigious clientele included the Westgate Building, the Austin Woman’s Club, the Austin Club, the Headliners Club, St. David’s Episcopal Church, and dozens of luxury residences. While leading the Austin Heritage Society, Revell was instrumental in saving the Lundberg Bakery and redesigning the North-Evans Chateau, home of the Woman’s Club.

**PROPERTY EVALUATION**

---

*Designation Criteria—Historic Landmark*

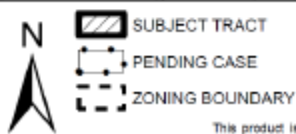
- 1) The building is more than 50 years old.
- 2) The building appears to retain high integrity.
- 3) Properties must meet two criteria for landmark designation (LDC §25-2-352). Staff has evaluated the property and determined that it may meet two criteria:
  - a. Architecture. The building displays eclectic Revival-style influences, but does not appear to be architecturally significant.
  - b. Historical association. The property is associated with interior designer and business owner Jack Revell.
  - c. Archaeology. The property was not evaluated for its potential to yield significant data concerning the human history or prehistory of the region.
  - d. Community value. The property does not possess a unique location, physical characteristic, or significant feature that contributes to the character, image, or cultural identity of the city, the neighborhood, or a particular demographic group.
  - e. Landscape feature. The property is not a significant natural or designed landscape with artistic, aesthetic, cultural, or historical value to the city.

**STAFF RECOMMENDATION**

---

Release the demolition permit upon completion of a City of Austin Documentation Package. While Jack Revell was an influential Austin designer, the building does not appear to have sufficient architectural significance to meet both criteria for designation.

# LOCATION MAP



1" = 292'

## NOTIFICATIONS

CASE#: PR 21-155277  
LOCATION: 2412 VISTA LANE

This product is for informational purposes and may not have been prepared for or be suitable for legal, engineering, or surveying purposes. It does not represent an on-the-ground survey and represents only the approximate relative location of property boundaries.

This product has been produced by CTM for the sole purpose of geographic reference. No warranty is made by the City of Austin regarding specific accuracy or completeness.





## PROPERTY INFORMATION

### *Photos*



*Applicant, 2021*



*Zillow.com, 2021*

### *Occupancy History*

City Directory Research, October 2021

- |      |  |
|------|--|
| 1959 | Edmond J. and Elizabeth Revell, owners<br>Revell & Co., home furnishings, 208 W. 14 <sup>th</sup> St.  |
| 1953 | Edmond J. and Elizabeth Revell, owners<br>Revell & Co., home furnishings, 208 W. 14 <sup>th</sup> St.  |
| 1949 | Edmond J. and Elizabeth Revell, owners<br>Revell & Co., furniture dealers, 208 W. 14 <sup>th</sup> St. |

## Biographical Information

## White Grillwork, Curved Staircase Keynote Formality

(Continued from page 6)

the use of cedar paneling and edge-grain Pacific fir throughout the entire house.

Far more formal than either of the aforementioned homes is that of Mr. and Mrs. Fred Sharp on Niles Road. Built of brick, it is painted white with grey shutters and considerable grill-work trim. Like that of the Lawless residence, interior decoration was done by Jack Revell.

In the entrance hall, a beautiful stairway curves upward furniture in Adrian purple upholstery makes a striking picture against grey-and-white wallpaper, grey carpet, white woodwork.

To the right of the hall is the tremendous, as yet uncompleted living room, where carpet, walls and sofa are in New Orleans blue, flowered draperies are predominantly blue and rose. (According to Mr. Revell, the modern trend in interior decorating is to use only two main colors in a room, rather than the former three. Sometimes a room may be 80 per cent one color, with only accents of a second tone.) Eventually the room will have a pair of custom-built love-seats before the fireplace, which will be graced by an extremely large mirror.

To the left of the hall is the dining room. Above its paneled wainscoting with chair-rail molding is an exquisite French Chippendale scenic paper, the original of which was done by Jean Pillement. Done in French blue and cranberry red, it sets the color keynote for the rest of the room. Chairs are upholstered in cranberry red antique satin, and lambrequins carry out the same color. The old English three-part banquet table is usually centered with Sheffield opeigne (circa 1810). The clay-beige rug is hand-sculptured imported Scottish chenille.

In an entirely different mood is the Hawaiian playroom at the back of the home, where wand-willow furniture and modern sectional

pieces are upholstered in gay hand-dyed prints (mostly green shades and a sort of watermelon pink). On the walls is a scenic hydrangea paper, while the floor is bare save for an oval rug of pure linen, with green, chartreuse and brown tufting.

Opening from the playroom is a powder room which has a built-in table, wall-to-wall mirror. Frivolous as a Mardi Gras is its grey wallpaper with polka-dots of violet chartreuse, pink and blue! Pink and grey lamps carry out the same motif.

In an accompanying picture, you can see the breakfast room with its large-patterned paper of pineapples and flowers in yellow, green and white against a field of tobacco-brown. The lazy Susan table's upper section (for condiments and salads usually) revolves, the side-board exhibits pieces of milk-glass, and door opening on a brick patio let streaming sunlight into the room.

Nearby are the large kitchen, pantry and washroom.

### Bedroom Grey and Pink

The entire upstairs of the Sharp home consists of bedrooms and baths for the family—which includes, besides Mr. and Mrs. Sharp, 16-year-old Ken Caswell, 12-year-old Claire Caswell, and Cavitt Sharpe, 9.

In the master bedroom, a grey and pink color scheme prevails and is carried out in the scenic wallpaper. A pair of Sheraton bachelor chests, which convert so well into night-tables, flank the antique English tester bed. "It doesn't have the usual canopy because of Mr. Sharp's aversion to furbelows," says Jack Revell. When completed, the room will include a breakfast table for two and a Mr. and Mrs. chair and ottoman set.

Chief feature of Mrs. Sharp's dressing-room is the dressing table, which is an old English piece with antique Dresden pulls. Above it hangs a gold-leaf portrait frame which has been converted into a mirror.



*The Austin American (1914-1973); Jul 20, 1947*

## IN GOOD DECORATION . . . THERE'S AN ABSENCE OF THE CONSPICUOUS

*If something bangs you in the eye when you enter a room, it's a decorative blunder. So is dull monotony. Revell & Co. is careful to avoid both extremes. Therefore, we create a well-balanced simplicity, combined with smartness that is never pretentious. Such good taste costs no more and sometimes less when you consult Revell & Co.*



## Revell & Co.

FINE INTERIOR FURNISHINGS

IN AUSTIN

206 W. 14TH ST.

IN HOUSTON

2421 S. SHEPHERD

*The Austin Statesman (1921-1973); Jul 20, 1950*



## Arrowcraft Sale Slated Thursday By Pi Phi Alums

Beautiful products of the Arrowcraft Shop of Pi Beta Phi will be offered at the yearly sale from 3-6 p. m. Thursday at the home of Mrs. Jack Revell, 2412 Vista Lane.

Mrs. Clark E. Myers is chairman of the sale to be sponsored by the Pi Beta Phi Alumnae Club of Austin. She has invited the public to attend.

Included will be hand-woven purses, neckties, knitting bags, scarfs, carriage robes, blbs, jackets, aprons, table services, bath rugs and stole and skirt materials. Fireplace brooms will also be offered. Prices will range from 50 cents to \$9.

The Arrowcraft Shop at Gallinburg, Tenn., is a part of the national philanthropic project of Pi Beta Phi, national fraternity for women. The Pi Phis in 1912 provided for this isolated Tennessee community, schools, a medical center and the Arrowcraft Shop.

At the latter, the people are taught crafts, and their work is sold throughout the US by alumnae groups. In this way more than 100 families support themselves.

The yearly cost of maintenance and operation of the project is \$35,000 which is supplied from contributions of fraternity members and from the sale of Arrowcraft products.

### Wednesday Music Club Program Theme Listed

Mrs. George Decherd will lead the program on "The Colonial 18th Century Drawing Room" at the 10 a. m. meeting of the Wednesday Morning Music Club at the TFWC Building.

Appearing on the musical program will be Mesdames Few Brewster, Rodney J. Kidd, Orville Wyas, Weldon B. Scheel, J. W. Lawless and Joseph D. Castle.



PI BETA PHI ARROWCRAFTS—Mrs. Louis Page Jr., Mrs. Clark E. Myers and Mrs. Melvin Martindale (left to right) plan a sale of products made at their sorority's Arrowcraft Shop at Gallinburg, Tenn. In the picture above

they are inspecting hand-woven materials to be used in stoles and skirts. The sale will be held from 3-6 p.m. Thursday at the home of Mrs. Jack Revell, 2412 Vista Lane.—(Neal Douglass Photo)

*The Austin American, Nov. 4, 1951.*

## Fine Arts Association Holds Vote

Saturday morning the Texas Fine Arts Association named 10 new members to its board of directors and elected three new officers.

Directors elected were Jack Gubbels, E. R. L. Rowe Jr., Leonard J. Lundgren, Eugene McKee, Tom M. Cranfill and Jack Revell, all of Austin; Mrs. Tom Blake, Dallas; John Leeper and Lewis Moorman of San Antonio; and Robert Straus of Houston. They serve three years.

Lundgren, who has served as president for the past two terms, agreed to continue temporarily until the board elected a new president.

*The Austin American (1914-1973); May 5, 1957*

# Austin 'Designs' for Decorators

Austin will be the interior decorating capital of the Southwest this week.

The American Institute of Decorators expects an attendance of 200, including wives and guests, at its Southwestern Regional Conference here Wednesday through Sunday.

It will be the first time Austin, a convention center of growing importance, has played host to a major meeting of A.I.D.

The conference will bring to Austin top names in the field of interior design, not only from the Southwest, but from over the country.

For the nine A.I.D. members living in Austin, the weeks of preparation have been unusually strenuous and filled with details. After all, for a meeting of interior designers, you can't use any old decorations. And one sagging drape in a meeting room could be a calamity.

Heading the list of distinguished Texas

guests will be Miss Ima Hogg of Houston whose election to national honorary A.I.D. membership is to be announced at the conference.

Miss Hogg is the daughter of the late Gov. James Stephen Hogg, Texas' first native-born chief executive. She is one of very few persons in the entire nation to be accepted for national honorary A.I.D. membership.

In nominating Miss Hogg, Texas Chapter President Roy F. Beal of Austin cited her as "one of the outstanding cultural forces in the South."

Among leaders in the profession expected are Harry V. Anderson of New York City, editor and publisher of Interior Design magazine; Ray Toucher of New York City, A.I.D.'s national by-laws chairman.

Also Milton Glaser of Richmond, Va., chairman of A.I.D.'s National Board of Governors;

and Harry Francis of Colorado Springs, Colo., a national vice president.

The Southwest Region's A.I.D. brass is also due. These include the three members of the National Board of Governors from this area: Thomas H. Miller of Houston, Southwestern vice president; Mrs. Mildred English Deutsch of San Antonio and Ernest Nereaux of New Iberia, La.

Also, the Louisiana Chapter president, Larry Lewis of Shreveport and, of course, Texas Chapter's president, Roy Beal of Austin.

The Texas Chapter, which includes New Mexico and Mexico, is host for the meeting. Louisiana Chapter covers Arkansas and Mississippi.

Newton Wilds is general program chairman and Arthur Pope Watson Jr., co-chairman.

Festivities will get under way, unofficially. (Continued on Page C-9)



Miss Amy Stark, Charles York and Jack Revell . . . brunch at Laguna Gloria

*The Austin American (1914-1973); May 24, 1959*

when Mr. and Mrs. Beal entertain Wednesday evening with an informal party at their home, 3400 Windsor Road, for national board members.

Beginning Thursday, top events of the conference and their Austin hosts include:

Registration, beginning Thursday noon, in the hospitality suite of the Sheraton Terrace Hotel. Frances (Mrs. H. E.) Duff will be hostess in the suite throughout the conference.

A tour of Austin Thursday afternoon, including the Capitol, Governor's Mansion, French Legation, Barton Springs, etc., ending at the University of Texas Home Economics Building for high tea. William D. Ray, affiliate, will be tour host. Miss Anne Brightman, home economics faculty member and A.I.D. associate, with the 23 members of the UT student chapter will be tea hosts.

A cocktail party at the Headliners Club Thursday evening with Jack Revell as chief host.

*Kittinger . . . Old Colony . . . Paul Hanson*

REVELL & CO. ANNOUNCES ITS  
**20th ANNIVERSARY SALE**

The Southwest's most exclusive collection of fine furniture and accessories is drastically reduced to commemorate this important event.

★ IN THE CORNER SHOP

. . . at 14th and Lavaca, Our entire stock of beautiful gifts and accessories: China, Crystal, Porcelaines and bronzes—International in scope.

REDUCED 25%

★ IN OUR FURNITURE GALLERIES

. . . At 208 West 14th Street. All furniture, lamps, mirrors, etc. A collection never equalled before—here or elsewhere.

REDUCED 25% to 33 1/3%

★ IN OUR ATTIC SHOP

Floor samples of furniture and lamps—All Sales Final.

REDUCED 50%

*Revell & Co.*  
FINE INTERIOR FURNISHINGS

Traditional Galleries      The Corner Shop  
208 W. 14th                      1401 Lavaca

*John Stuart . . . Stiffel . . . Oxford Ltd . . . Moldan*

*Heritage . . . Fine Arts . . . Henderson-Jende . . . Paul McCobb . . . Dunder . . . Herman Miller*

*Milling Road . . . Charles Sligh . . . Baker . . . Day of Sweden . . . Custom Craft . . . Huhman*

*The Austin American (1914-1973); Jul 10, 1960*

## From Fire To Finery

By LOIS HALE GALVIN

It's an ill wind . . . et cetera, et cetera:

The newly designed Austin Club—which will entertain members and their guests at a cocktail-buffet and official opening late this afternoon—exemplifies this familiar proverb:

The fire early last January that destroyed the beautiful interior of The Austin Club gave birth to what may well be one of the most luxurious clubs in the Southwest.

The designers, E. J. Revell and Newton Wilds, have created an entirely new interior that reflects the grandeur of the Renaissance Period, but captures the functionalism and lighter mood of the 20th Century.

The club's decorating theme gains its inspiration from the arts and crafts of Spain and Italy. Its elegant furnishings typical of the illustrious 17th Century, that include many one-of-a-kind antique accessories dating back to the early 1600's, have been interpreted in a contemporary manner.

Jack Revell and Newt Wilds, both members of the American Institute of Interior Designers, have incorporated such early materials as Spanish wrought iron, Moroccan leather and fruitwood paneling into the club's sumptuous furnishings. Colors are reminiscent of one of the richest eras in European art and culture.

Not only is the decor completely new and different, but the club's floor plan has also undergone drastic changes:

Entrance to the club is through brass-studded, stately paneled doors—similar to those seen in the Mediterranean Villas—opening into a spacious and dramatically fur-

nished loggia.

The new entrance is near the Commodore Perry Hotel's newly decorated Colonnade Ballroom which can be divided into Colonnade Rooms one, two and three. The Austin Club adjoins Colonnade Room three. An entrance from the club to the small ballroom makes it usable for club entertaining, also. The club can also utilize another hotel ballroom, the Viceroy, which is adjacent to the club's new main lounge, the El Greco. The El Greco Lounge was formerly another hotel ballroom, the State Room.

Other location changes include the main dining room and cocktail bar. The new dining room, called the Esplanade Room, is now in the former Constellation Room—and, a magnificently beautiful dining room it is, too!

The old dining room, lounge and bar areas have been designed into the most elegant of lounges, the Baccarat Room: a daytime lounge and card room for the ladies and at night a perfect setting for cocktail and supper parties. The bar area is an extension of the new lounge. Probably the only rooms remaining "as were" are the men's card room adjacent to the old bar and the long loggia that was the hub of the club before the remodeling.

However, both of these areas have entirely new decor. The loggia is called the Pavillion Room, and extends down into the new Presidio Bar, located in what used to be the men's reading room.

The 26-foot long Presidio Bar reflects a functional air of beauty with its costly quatrefoil design doors of gold leaf. The mirrored (See AUSTIN CLUB, Page D-2)



# AUSTIN CLUB

(Continued from Pg. 1)

shelves display a collection of Spanish and Mexican hand blown stemware. One of the decorative focal points in the Presidio Bar is a three-dimensional wall mural of carved wood, gold leaf and Mosaic tile. Its title is La Vista de Vigo, and its theme is a fantasy depicting Moorish art and architecture in Vigo, a small city in Northern Spain on the coast of Galicia.

Entirely new is the club's super room, aptly referred to as the Blue Room, and especially designed for small, intimate luncheon or supper parties. An extremely fine oil portrait of the Duke of Alba, by A. D. Greer, enhances the room's main wall of antique brick, and its wonderful coloring reminiscent of the Van Dyck era are reflected in the room's handsome traditional furnishings and imported, rich blue rug.

An atmosphere of grandeur and old world charm prevails from the entrance loggia throughout the entire club, now greatly expanded.

In the loggia, and all through the club, floors are handsome parquet. (Four-pointed stars of black walnut accent the parquet floors in the bar). An imported rug in aquamarine and olive, hand-tufted with a sculptured Spanish border, covers the loggia floor. Designed by the Revell

Co., it was made expressly for the club by Tempo-Asia.

A huge antique gold mirror, originally from a chateau in Southern France, hangs on the paneled wall above a 12-foot long credenza of antique walnut with bronze motifs of the Renaissance Period decorating the front panels. Flanking this oversize cabinet is a pair of chairs of Basque origin from the same French region.

A magnificent 17th Century Italian cabinet at the far end of the loggia is one of the numerous antique treasures that give the club its look of grandeur. The black and gold decorated cabinet is flanked with a pair of antique Venetian chairs upholstered in gold leather with tooled black fill-gree borders.

In the Pavillion there is a three century old elaborate Varguero cabinet, which gets its name from Vargas, where the first cabinets of this style were made. They were probably used as a dowry chest by Spanish brides. This one came from a collection purchased in Seville, Spain.

The Baccarat Room to the left of the Pavillion is in soft emerald green, white and gold and done in simple Louis XVI and French empire furnishings. Focal point is an antique mantel facing

in white with gold fleur-de-lis design from an old Napoleonic home in Paris. Another oil by Greer picks up the room's color theme in its floral arrangement of golden roses. There are a number of other oil paintings in the club which Mr. Greer painted especially to harmonize with its new decor.

The El Greco Lounge has the atmosphere of a stately drawing room. Its walls of mellow fruitwood paneling, cozy fireplace and intimate furniture groupings gives it an air of warmth and hospitality. The furnishings were expressly planned to accommodate both large and small social groups for cocktails and conversation. Spanish gold, aquamarine and olive leaf colors prevail, but accents of Palladio white complement the room's elegant character.

Mellowed fruitwood walls also form the background for the club's new dining area, the Esplanade Room. The Continental charm of its Mediterranean theme is further enhanced by its decorative iron window grills, handmade, Venetian inspired furniture and colors of Spanish Gold, cerulean blue and white.

In the center of the carpeted floor, the designers have laid an intimate size dance floor for use on the club's Cabaret Nights. Overhead lighting in the room is furnished by beautiful bronze and

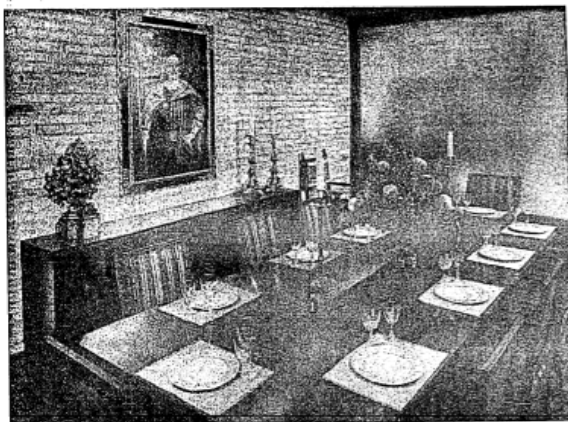
crystal chandeliers from Spain. Wall sconces are wrought iron finished in gold leaf. Light fixtures throughout the club reflect the decor's harmonious coordination:

A 24-light hand chiseled bronze chandelier in the El Greco lounge was made in Spain expressly for Revell's. The room's 10-light, over-mantel sconce of Spanish design came from Italy. Many of the other very beautiful light fixtures were originally of Italian origin or were made there especially for the club's interior designer.

Brass and crystal Italian Renaissance lanterns in the loggia are imports from Milan, Italy; an oversize antique lantern in the Presidio Bar came from an Italian villa; and Palladio of Italy made the hand carved white and gold pineapple design chandeliers in the Baccarat Room.

There is an heraldic note to the two-tier French toile chandelier in the Men's Grill which is a masculine sanctum with its generous sized, leather upholstered chairs and sturdy tables. The chandelier, designed by Revell and made in New York especially for the club, is in old oxidized green finish with brass highlights and candle design lights.

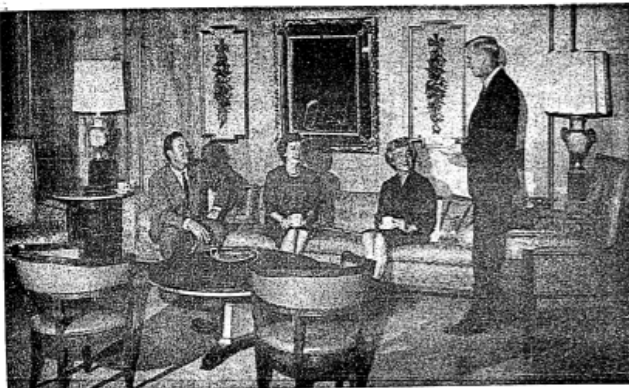
The grill is adjacent to the El Greco Lounge but also has a private entrance — just one of many innovations that will make the club more convenient and enjoyable for its members and their guests.



VIEW OF OIL PORTRAIT SETS THEME OF BLUE ROOM—SUTTER ROOM ESPECIALLY FOR SMALL PARTIES



THE HARRY P. WHITWORTHS—HE'S CLUB PRESIDENT—ARE ENJOYING NEW PRESIDIO BAR'S ELEGANT ATMOSPHERE



THE WALTER CAVENS AND WHITWORTHS FIND EL GRECO LOUNGE IDEALLY SUITED FOR LARGE OR SMALL GROUPS



BACCARAT ROOM'S FURNISHINGS ARE LIGHT AND FEMININE, ITS COLORS GOLD-WHITE-EMERALD GREEN



## Home and Office Can 'Live With Art'

By LOIS HALE GALVIN

The strong feeling that art should be a more integral part of the home — and even of business offices and firms — is definitely spiraling.

Less clearly defined is: "Just how is this utilization of the fine arts most effectively and purposefully achieved?"

The interior designers themselves, all across the country, are lending impetus to this very worthwhile trend — and, are also sharing some of their professional advise and interior planning talents to show how paintings, sculpture and other objects of fine art can be successfully combined within the schematic interior planning.

A "Living with Art" exhibition at Laguna Gloria Art Museum, 3809 West 35th Street, will be sponsored by the Austin members of the Texas Chapter of the American Association of Interior Designers. It will be shown Nov. 11 through Dec. 10, instead of to Dec. 27 as originally slated.

Vignettes utilizing paintings and sculpture from the museum's Sales and Rental Galleries will be designed by the AID members. The exhibit will show the professional interior designer's approach to creating a decorative scheme

around specific art objects.

Vignettes will be arranged by the following AID members:

Madeleine Aubry of Oetting Furniture Studio; Roy F. Beal of Roy Beal Associates; Frances Duff of Frances Duff Inc.; E. J. Jack Revell of Revell and Co.; Amy Stark of Amy Stark Interiors; Arthur Watson of Watson Associates, Interior Designs; and Newton Wilds of Newton Wilds, Designer; and AID affiliates, Robert Farmer Jones of Roy Beal Associates; Larry Schrader and Joe Burke of Revell and Co.; and Ann La Nell Weber of Amy Stark Interiors.

Mr. Watson is planning a vignette entitled, "An Important Corner," featuring an oil painting, "View by the Sea" by William Anzalone of Houston; the painting is on loan by courtesy of The Houston Galleries.

Mr. Wilds will design a vignette around an oil painting by J. F. Trevino of Austin, titled "Man with Flowers"; and Miss Weber will arrange a vignette featuring a painting by an unknown artist of circa 1850, titled "Phoenix."

"Chartres," an oil by Michael Frary of Austin will be incorporated in the vignette by Mrs. Stark; "A Library" vignette by Mr. Schrader will feature an oil by Margery Townley called "Young Moor."

Mr. Revell has also chosen an oil painting by Michael Frary, "Sailboats," for his vignette portraying "A Foyer in a Country House," while Mr. Jones selected two silver point drawings by Hector Xavier of Mexico City, "Pinces" and "Cabezo de Mujer" to highlight his vignette.

*The Austin American (1914-1973); Nov 4, 1962*

## Westgate Apartments Open for Viewing Today

The Austin public will get its first view of Westgate interiors Sunday when four completely decorated and furnished apartments are put on display. The apartments will be open for inspection from 12 noon to 8 p.m.

The new high-rise apartment and office building, located directly across from the west gate into the State Capitol grounds is slated for completion in July.

The building was designed by one of the nation's most outstanding architects, Edward Durrell Stone of New York, in association with Fehr and Granger of Austin.

The model apartments, located on the 13th floor of the building, have been tastefully furnished by Jack Revell and Associates of Austin. On display are four of the 28 floor plans available to Westgate residents, and custom draperies. They are a studio unit; a one-bedroom apartment; a two-bedroom and den apartment; a two-bedroom, two-bath unit; and a one-bedroom and den apartment.

Lyla Willis is the leasing agent

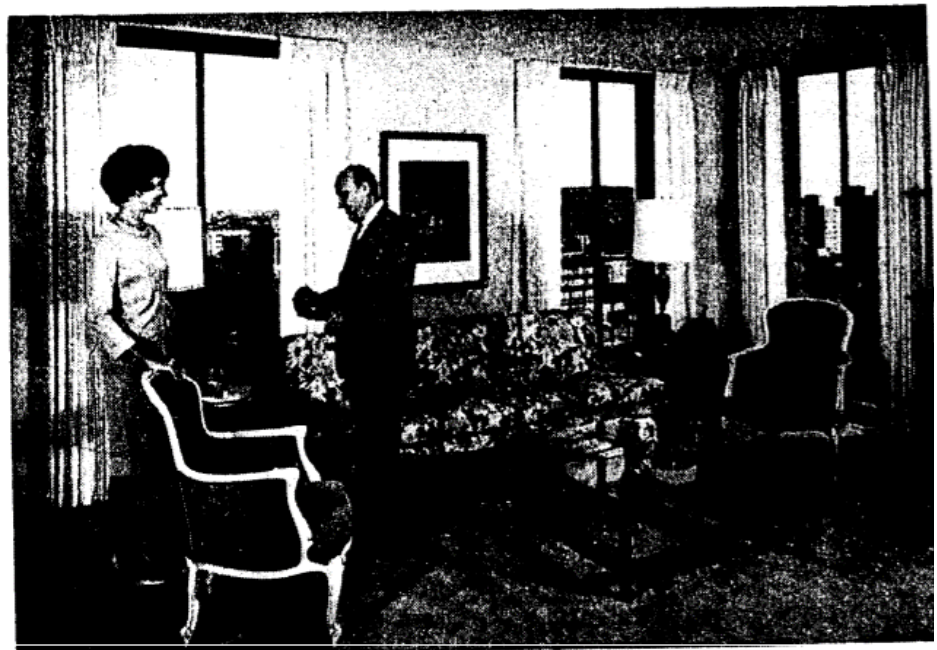
for Lumbermen's Investment Corporation, owners of Westgate, which is Austin's newest high-rise apartment building. Rentals for the apartments begin at \$115.

When construction is completed in July, Westgate's 25 stories will include 13 floors of apartments containing 109 units, six floors of garage parking and three office levels.

The 23rd floor will house the Polonaise Restaurant, a twin of the famous Old Warsaw in Dallas. The 24th floor will be occupied by The Headliners Club. The 25th floor will be devoted to a sun deck and open air swimming pool.

Both furnished and unfurnished apartments will be available. Each will have an all-electric kitchen, nylon carpeting available to Westgate residents, and custom draperies.

"Westgate will offer numerous services unique to Austin," said Thomas Darmstadter, vice president of Lumbermen's. "And we are sparing no effort to make Westgate a world of comfort, luxury and service."



JACK REVELL AND LYLA WILLIS IN ONE OF WESTGATE'S FOUR MODEL APARTMENTS

*The Austin American (1914-1973); Mar 6, 1966*

# Heritage Society To Present Awards

By LOIS HALE GALVIN

Home Editor

Heritage House, 3112 West Avenue, will be the scene of the Heritage Society of Austin's annual meeting and presentation of appreciation and historic buildings awards on Thursday from 4 to 6 p.m.

The event, open to anyone interested in the preservation of Austin traditions and historic homes, will also be the occasion for honoring the founders of the Heritage Society, which was organized on April 23, 1953.

Officers who were elected at the organizational meeting to serve until a slate of officers would be named at the annual October 1953 meeting were the late Mrs. Wayman Adams, president; Mrs. Thomas J. Holbrook, first vice president; Mrs. Henry Kluge, second vice president; Ed Cravens, treasurer, an office in which he has continuously served; Mrs. Hubert B. Jones, recording secretary; and Mrs. J. Frank Dobie, corresponding secretary.

The first board of directors included Mrs. Frank Davol, Bubi Jessen, Mrs. Tom Nelson, Frank D. Quinn, the late Roy Redicheck, Mrs. Harris Brush, Mrs. Stanley P. Finch, Judge James McClendon, Trueman O'Quinn, Mrs. Z. T. Scott and Miss Winnie Allen.

The awards ceremony will be at 5 p.m., when the society will present citations as follows:

Appreciations awards will be presented to Board of Regents, University of Texas, for the preservation and use of the Littlefield House; to J. Roy White for his architectural skill and devotion to the ideals of historic preservation in keeping intact the century-old St. David's Episcopal Church; and E. J. Jack Revell, in recognition of the time, skill and judgment he gave to accomplish the distinctive furnishings and decoration of the New Parish Hall of St. David's Episcopal Church.

The Austin American (1914-1973); Jan 15, 1967



## Historic Old Bakery Reaches Debt-Free Status

By LOIS GALVIN  
Woman's Staff

The Old Bakery at 1006 Congress has reached another milestone: one which marks as successful the endeavor to preserve and restore one of early Austin's most charming little business buildings.

Bought and restored as a Coffee Kitchen and Tourist Information Center, the Old Bakery is the first community-wide, all volunteer project of its kind in the Capital City.

A pre-holiday sherry party honored the volunteers who have contributed so much to the success of the undertaking. This was also the occasion for burning a copy of the mortgage on the new debt-free old building, which cost more than \$56,000.00 to buy and restore.

"Austin is the Capital City of Texas — and, as such every citizen in the state has a stake in it.

"We as citizens of Austin, should consider ourselves custodians of the property of the Capital City, and we should do all that's possible to preserve and take care of everything here, as well as to encourage people outside the city to take an interest in it," Mr. Simpson told his board members at the organizational meeting.

"The board is concerned with restoring and converting the old Lundberg Bakery building at 1006 Congress into a downtown center of information about Austin's other historic sites and points of interest as well as current activities.

was first undertaken the Junior League has given a total of \$12,000; the Guild and Old Bakery, \$16,730; the Heritage Society, \$9,007 and a total of \$10,000 in gifts from groups and individuals. The old building itself cost \$34,500 and the restoration cost was \$19,709, with another \$1797 for furnishings.

"Where do we go from here?" is the question the Heritage Society now asks itself. And, there are some answers:

One of the big projects ahead is the Austin Heritage Foundation established this year by the Heritage Board as a committee of the society. Its goal is to broaden the scope of the preservation and restoration efforts of the Heritage Society — and, already, members of that committee are well on their

way to teaching the initial funds needed before plans can be activated.

In the future, proceeds from the Old Bakery will go toward this Foundation — and, the volunteers who give so generously of their time and effort will be making vital contribution towards the restoration and preservation endeavors in the Capital City.

The fund-raising efforts for the purchase and restoration of the Early Austin building, which was the historic Lundberg Bakery built in 1876 by Swedish immigrant, Charles Lundberg, was the joint undertaking of several groups and innumerable individuals.

The Austin Heritage Society and the Junior League of Austin were co-sponsors of the project. The Junior League provided \$12,000 to help finance the undertaking, while the Heritage Society undertook the responsibility of continuing fund-raising efforts.

The Old Bakery Board — sometimes referred to as the "Dough Board" — and the Heritage Guild were organized in 1963 as branches of the Heritage Society: the Board, with John Simpson as its president, was responsible for raising funds and expediting the restoration; and the Guild for the purpose of supervising and operating the Bakery's Coffee Kitchen, its Hospitality and Information Center, a Gift and Souvenir Counter, and later, guided bus tours.

On Sept. 28, 1964, Governor John Connally and Mayor Lester Palmer shared in ceremonies that officially opened the historic landmark launching it in the new role.

Negotiations for the historic old Bakery building were underway for more than a year when Jack Revell, president of the Heritage Society, signed the deed of trust in the purchase transactions in October of 1963. S. Conoly Bartlett is now president.

The restoration of the historic building was initiated by Mrs. James P. Hart, who served as first vice president of the Bakery Board, and continuing a advisor and member of the Heritage Guild. She was appointed to the Texas State Historical Survey Committee that same year, was then, as now, head of the Austin-Travis County Collection of the Austin Public Library and conservation chairman of the Heritage Society.

An option to purchase the landmark was exercised in December of 1962, when the Heritage Society made a gift of \$500 for the down payment and the Junior League gave \$5,000 to help with the project, while another \$5,600 was raised by six women through personal contact for special gifts.

"Our goal is to make it self-sustaining, if at all possible," he told the board members at that time. . . .

That goal has been reached because enough people cared and were willing to volunteer their time and service and financial contributions.

The Old Bakery itself slowly but steadily helped to "earn its own way." The coffee kitchen soon became a favorite spot for a quick luncheon of home made sandwiches and hot or cold drinks. It also soon became the favorite place to buy home made bread and other baked delicacies every Friday morning. By 1966 through these two sources the Guild had presented \$2,000 to the Bakery Board toward retiring the indebtedness. This month it presented a check for \$2,000 to which the Heritage Society added another \$1,000 and the goal was reached. During the six years since the project

## Services Set For Designer

Services for Edmund Jon (Jack) Revell, founder of Revell and Company, will be noon Tuesday at St. David's Episcopal Church. He died Sunday.

A past president of the Austin Heritage Society and a past member of the Board of Directors of the Texas Fine Arts Association, Revell founded the interior design company in 1940. Revell served as a consultant and officer of the firm from 1970 until his retirement earlier this year.

One of Texas' first members of the American Institute of Interior Design, Revell's work included the Austin Club, the Headliners Club and the Westgate Building.

He is survived by his wife, Elizabeth Williams Revell of Austin; one son, Owen Roe Revell of Austin; a daughter-in-law, Donna D. Revell of Austin; a sister, Grace Revell Steger of Georgetown; and two grandchildren. (Weed-Corley)

## Open House Hours Given For AWC

Austin Woman's Club house committee members and interior designer Jack Revell's work crews put finishing touches Monday on restoration of the club's original main floor at San Antonio, 8th and Nueces Streets. Doors open to the public today from 10 a.m.-noon, 3-6 p.m., and 8-10 p.m.

The open house is the project of the ways and means committee, headed by Mrs. Alden Davis and Mrs. Warren Friend, who announced Monday the following members to serve at the refreshment tables through the day.

*The Austin Statesman (1921-1973); Sep 24, 1968 and Austin American-Statesman, Nov. 4, 1974.*

### Permits

E. J. Revell	2412 Vista Lane
155	4,5 and south 10' of 6 - - -
Mira Loma	
Brick veneer residence with car port attached.	
38811 8-17-48	\$18,000.00
Will O'Connell	

*Building permit, 1948*



201445  
 5 50 10 14

# WATER SERVICE PERMIT

C N° 3847  
 153

E. J. Austin, Texas  
~~John~~ REVELL

Received of John REVELL Date 7-1-49

Address 2412 VISTA LANE

Amount FIFTY + NO/100 \$ 50.00

Plumber RAMSEY NURSERY Size of Tap 2"

	Size
Date of Connection	7-11-49
Size of Tap Made	2 1/2"
Size Service Made	2"
Size Main Tapped	2"
From Front Prop. Line to Curb Cock	25'
From 5- Prop. Line to Curb Cock	30'
Location of Meter	Curb
Type of Box	Lock
Depth of Main in St.	3'
Depth of Service Line	2.5'
From Curb Cock to Tap on Main	One meter
Checked by Engr. Dept.	2-7-49 RWP

## INDEXED

No. Fittings

Curb Cock 1

Elbow 2 1/2" Copr. 1

Sw. 2" Copr. 1

Bushing 2" x 1 1/2" 1

Reducer 1

Pipe 2 1/2" Copr. 3

Lead Conn. 2

Nipples 1/2" x 5" 2

Union 1

Plug Tee 1 1/2" x 3/4" 1

Stop 1 1/2" x 1 1/2" 1

Box Lock 2 1/2" x 2 1/2" 1

Lid 1 1/2" x 2 1/2" 1

Valves 2" 1

Job No. 2-3223-502

Req. No. 11000

DECEASED C. 2003

*Water tap permit, 1949*

mm in Union Trail 0400

Receipt No. 10709 Application for Sewer Connection No. 25210

Austin, Texas, 9-21 1948

To the Superintendent of Sanitary Sewer Division, City of Austin, Texas.

Sir:—

I hereby make application for sewer connection and instructions on premises owned by W. H. O'Brien at 3412 Vista Lane Street,

further described as Lot 4 of Block 12 Outlot 1 Division

subdivision North Lamar Plat 155 which is to be used as a

In this place there are to be installed 12 fixtures. Plumbing Permit No. 31807

I agree to pay the City of Austin, the regular ordinance charge. 10-10-48

Depth at Prop. Line 3' 6' of man Respectfully,

~~Sub~~ Connected 47' up in Keating Land Co.

Date 10-21-48

By Ranger

NOTE: Connection Instructions 1' down in Keating Land Co.

*Sewer tap permit, 1948*