

City of Austin  
Central Fire and EMS Station

## Introductions and Context

Alex Janota, Project Manager  
Flintco  
General Contractor



# Outline



Introductions and Context  
Alex Janota, Project Manager  
Flintco – General Contractor



Historic Significance  
Donna Carter, President  
Carter Design Associates – Historic Preservation



Changes to Historic Fabric  
Tim Baisdon, Vice President  
WestEast Design Group – Architect



New Addition  
Rob Robbins, Studio Director  
WestEast Design Group – Architect



# Context

Location: 401 E. 5<sup>th</sup> St

Part of a block owned by the city

Block includes the O. Henry Museum

Project is being coordinated with the development of Brush Square Park, which is a separate project led by the Parks and Recreation Department



Introduction



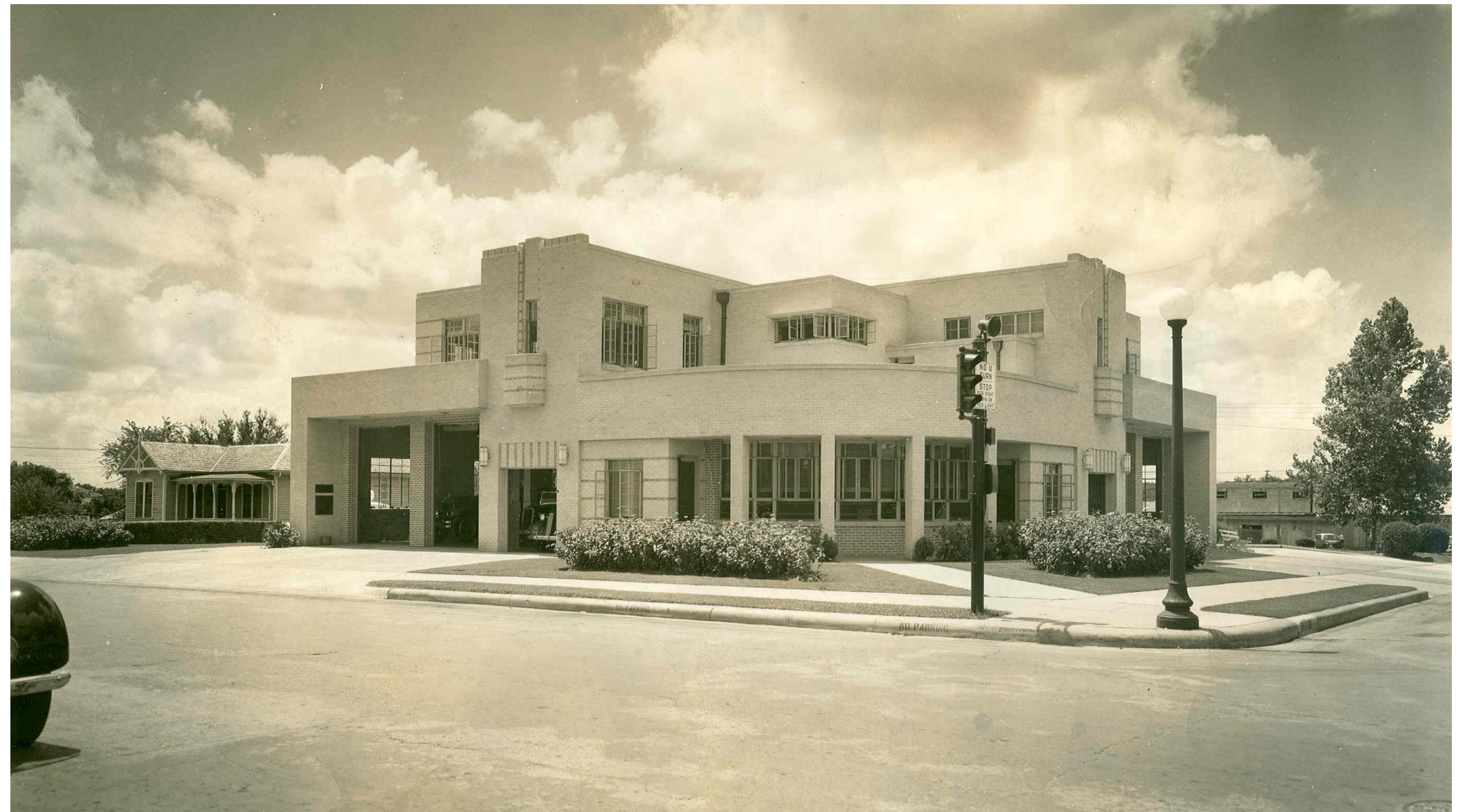
# Overview

Constructed in 1938

Architect:  
Kreisle and Brooks

Constructed under the  
Public Works  
Administration (WPA)

National Register of  
Historic Places in 2000

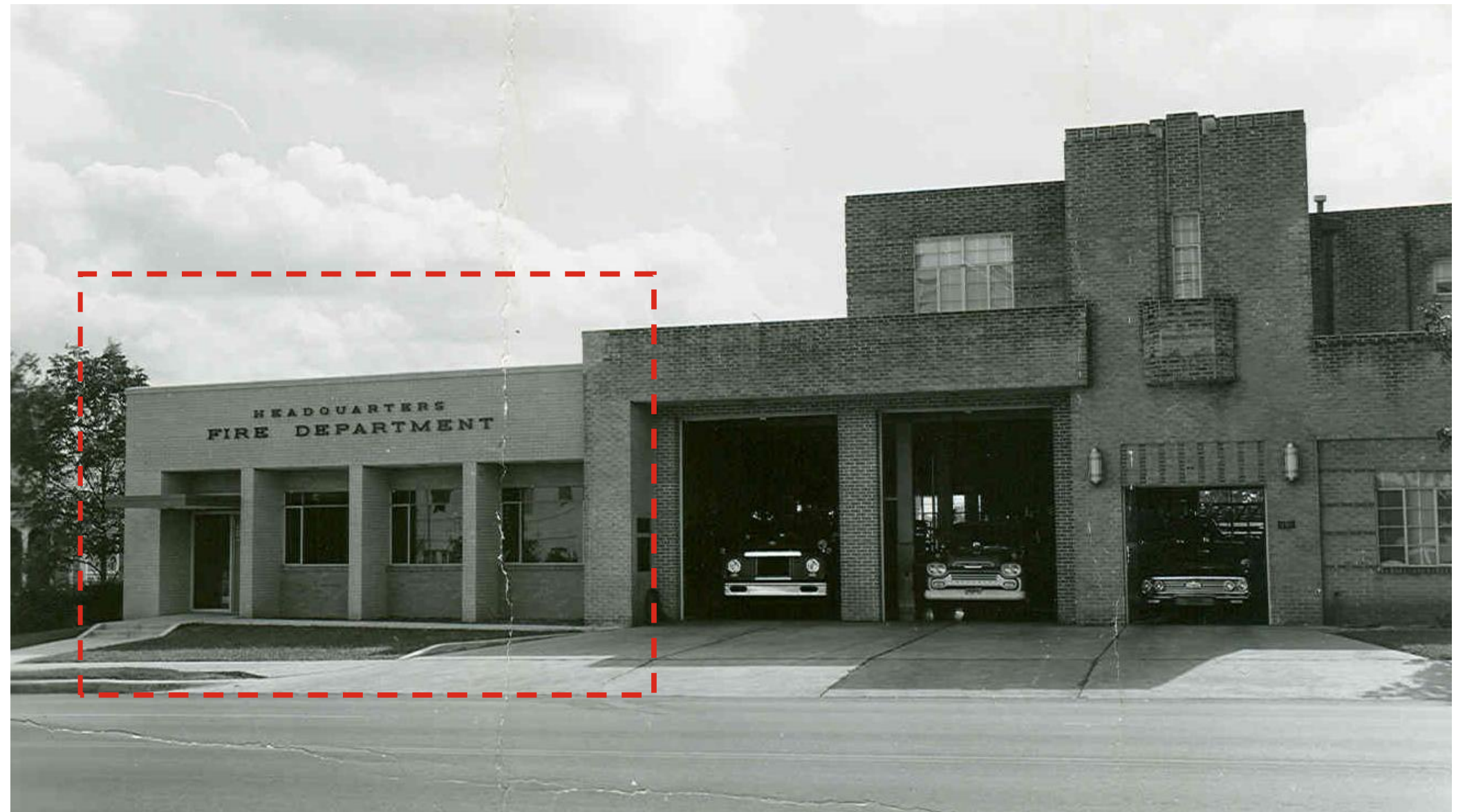


Building History



# Overview

Annex added in 1962  
by architect Eugene  
Wukash

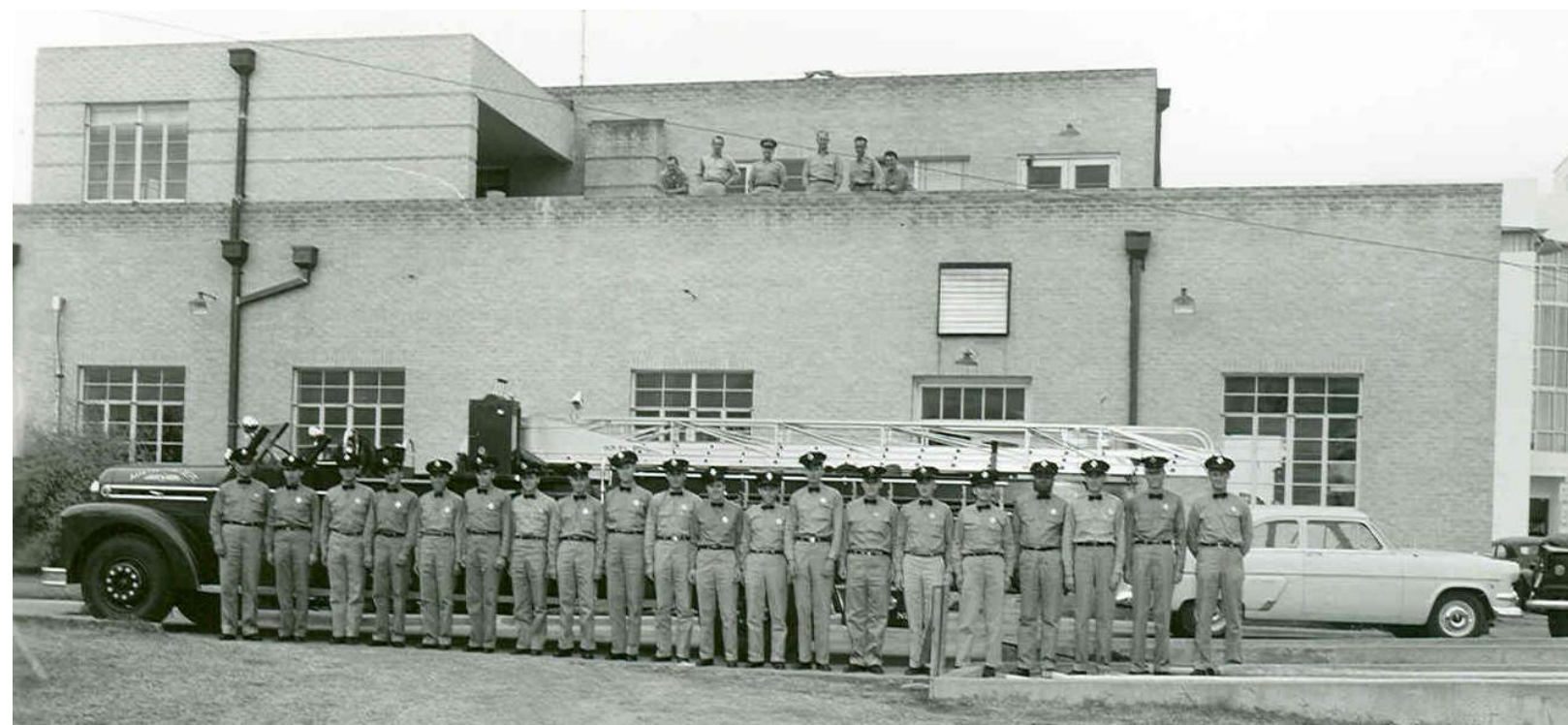


Building History



# Overview

Non-historic windows  
added in 1980s



Building History



City of Austin  
Central Fire and EMS Station

## Historic Significance

Donna Carter, President  
Carter Design Associates  
Historic Preservation

CARTER • DESIGN  
ASSOCIATES

# Historic

Moderne style  
(Streamline Moderne)

Simplicity of  
ornamentation



Key Features and Stylistic Elements



# Historic

Use of building materials as decoration

Subtle patterning

Brick coursing

Symbolic towers

Nickel-finished lights



Key Features and Stylistic Elements

# Historic

Curved portico

Corner approach



Key Features and Stylistic Elements



# Historic

Layering of elements

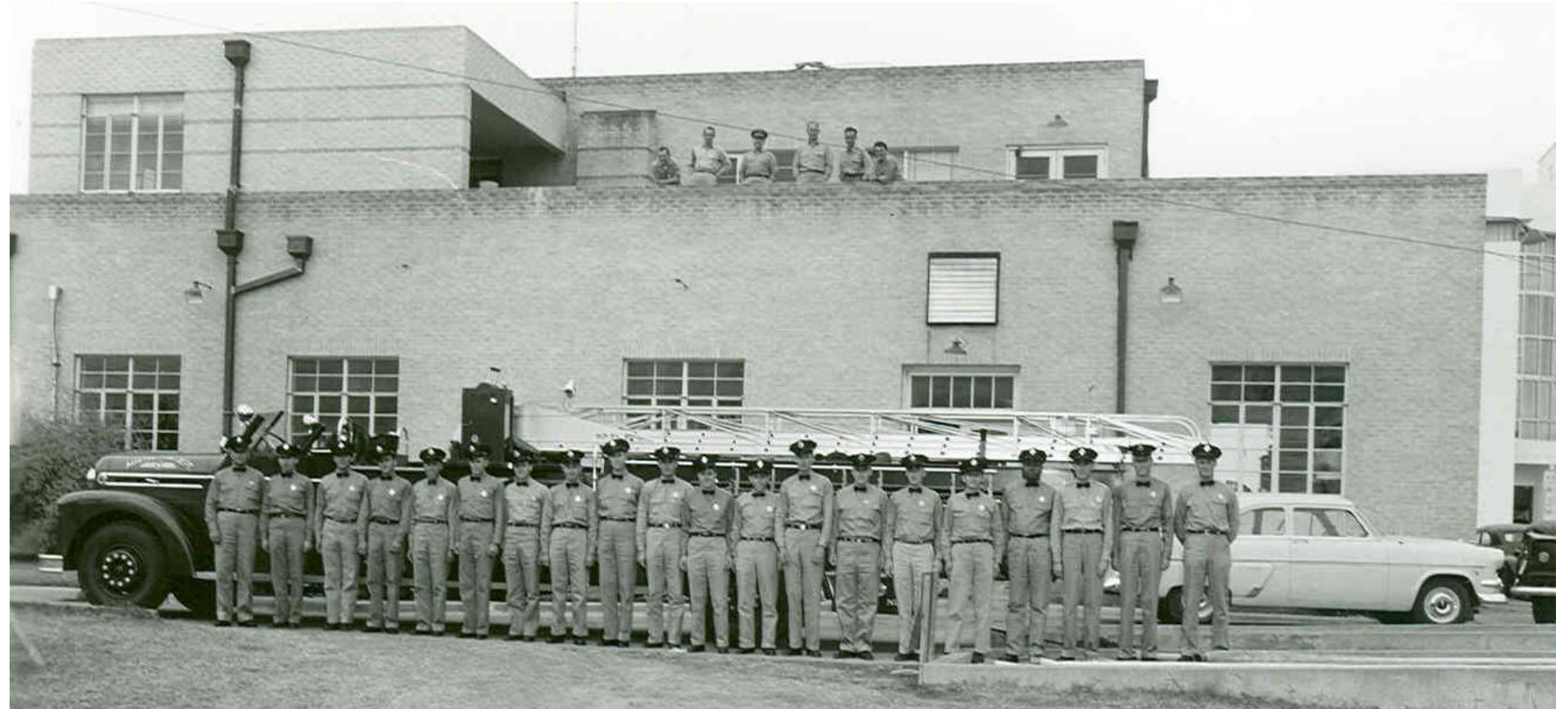
Massing plays with  
symmetry and  
asymmetry



Key Features and Stylistic Elements

# Preservation

The proposed changes ensure the facility will continue to operate in its historic location efficiently functioning as its original purpose for years into the future.



Maintain Original Intended Use



# Preservation

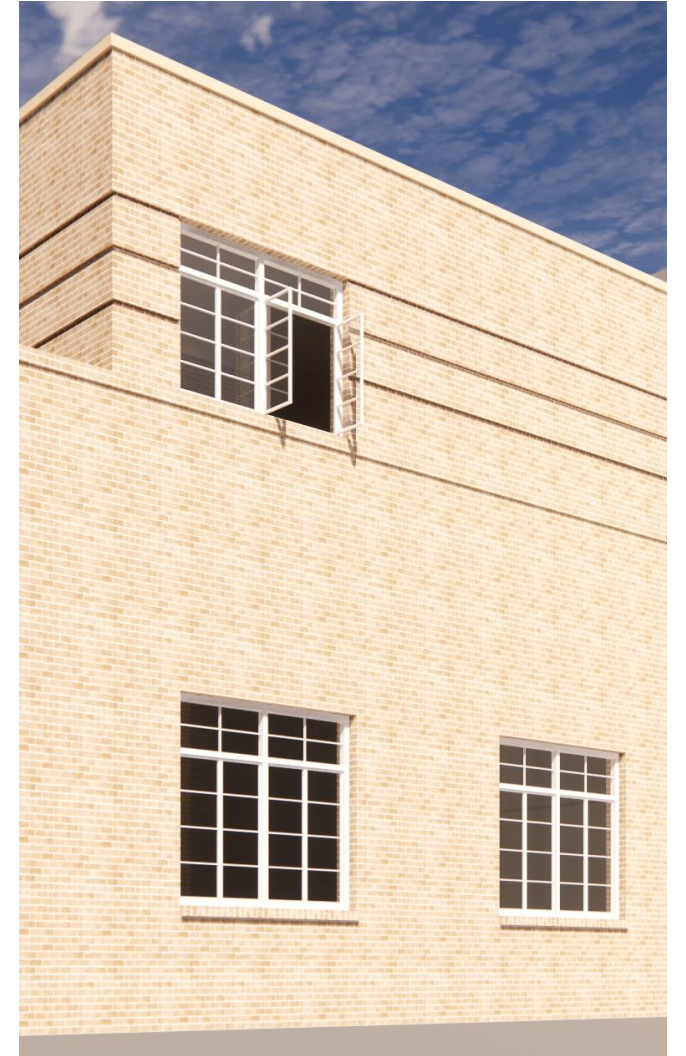
Window replacements  
will more closely match  
the original design



Original



Current



Proposed

Return to Original Design Elements

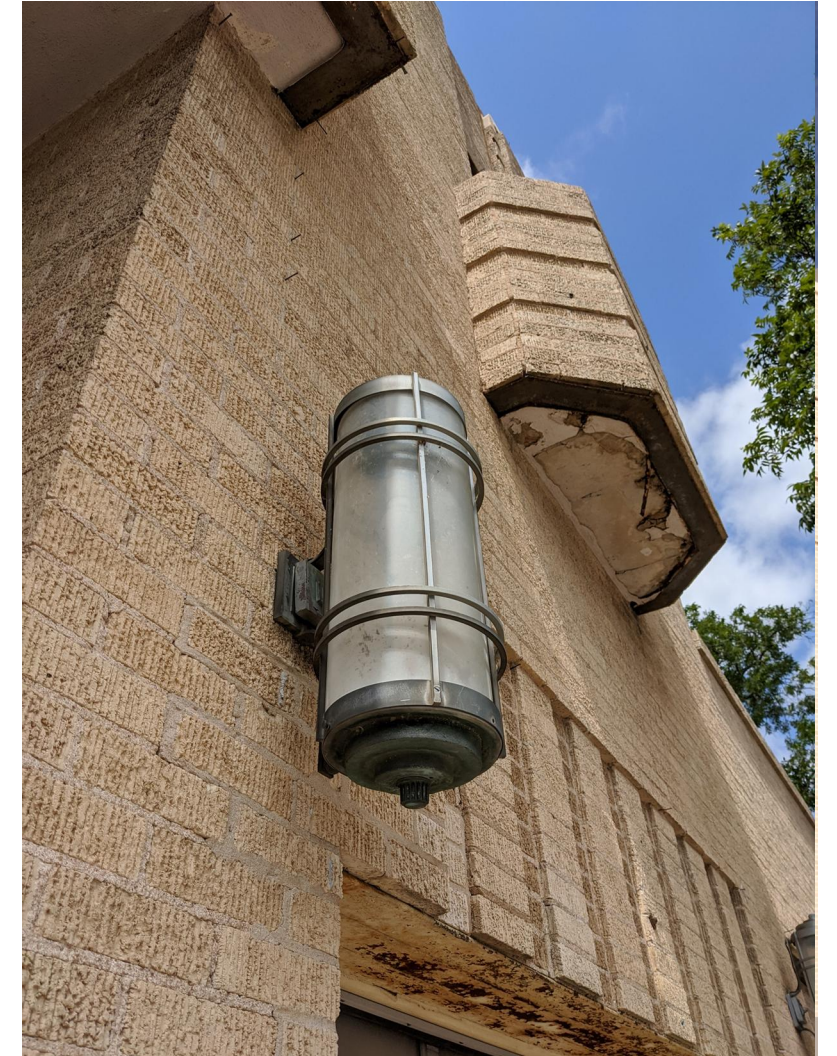
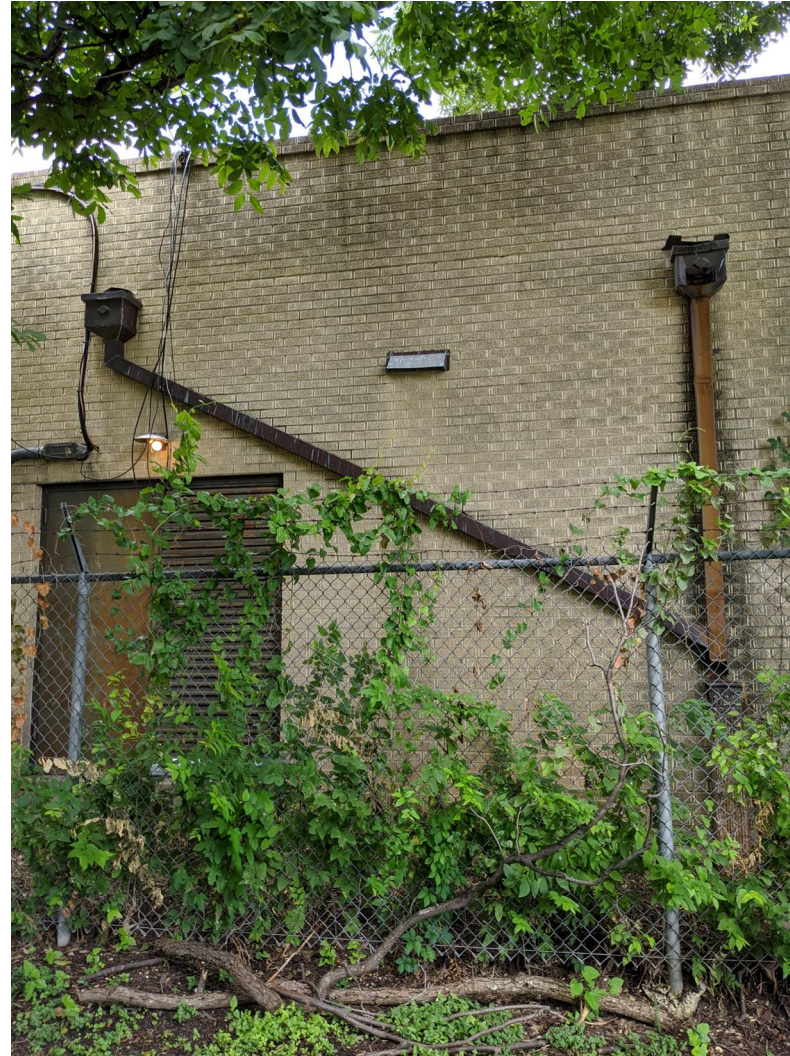


# Preservation

Brick will be cleaned  
and repaired

Lintels will be  
refurbished

Eroded plaster on soffits  
will be replaced



Maintenance, Repair, and Replacement



City of Austin  
Central Fire and EMS Station

# Changes to Historic Fabric

Tim Baisdon, Vice President  
WestEast Design Group  
Architect

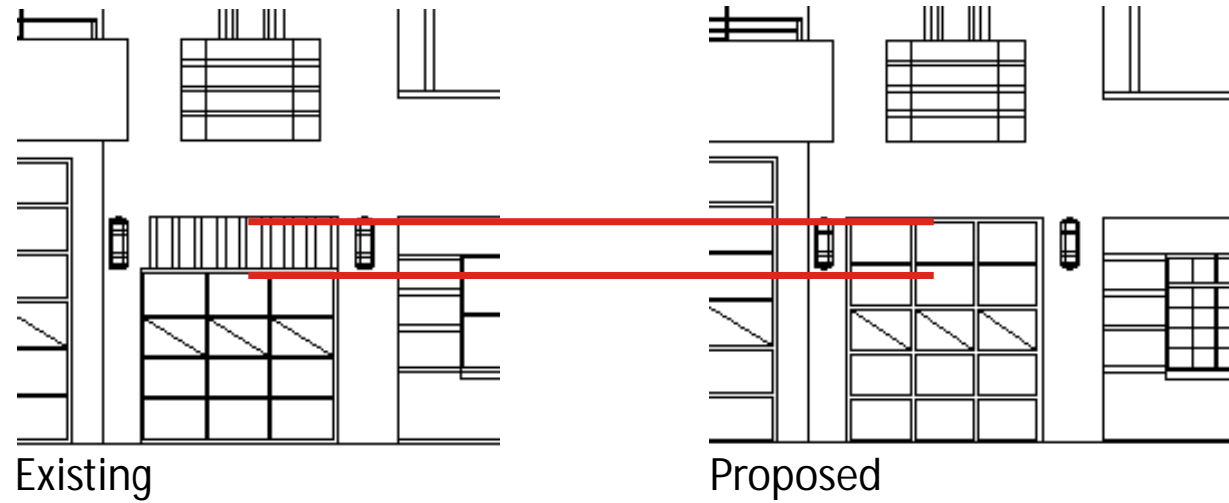


WESTEAST  
DESIGN GROUP

Historic Landmark Commission – Design Overview Presentations  
28 June 2021

# Program

Improved emergency response through bay door height increase to accommodate modern vehicle sizes



Interior reconfiguration to accommodate gender equity



End-user's Long-term Needs



# Program

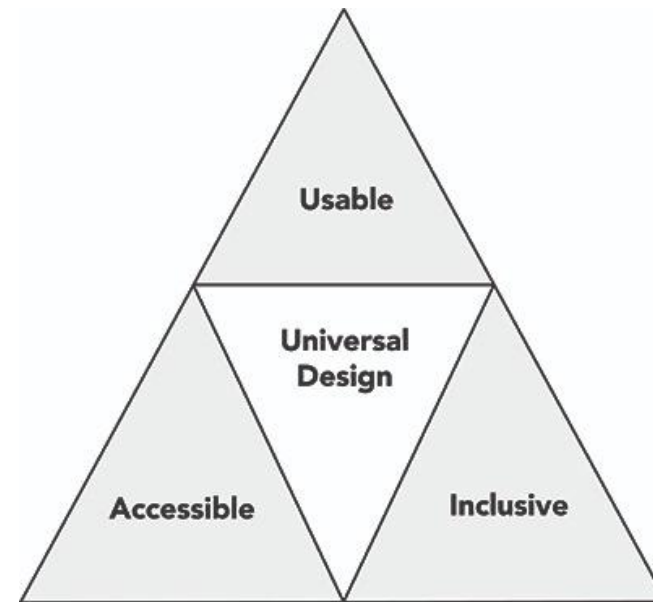
Improvement of life safety through sprinklers and additional egress

Making the building accessible (ADA and elevator addition)

Energy efficiency (Windows, Envelope, and HVAC)

Preserve the building's inclusion on the National Historic Register

City's Objectives

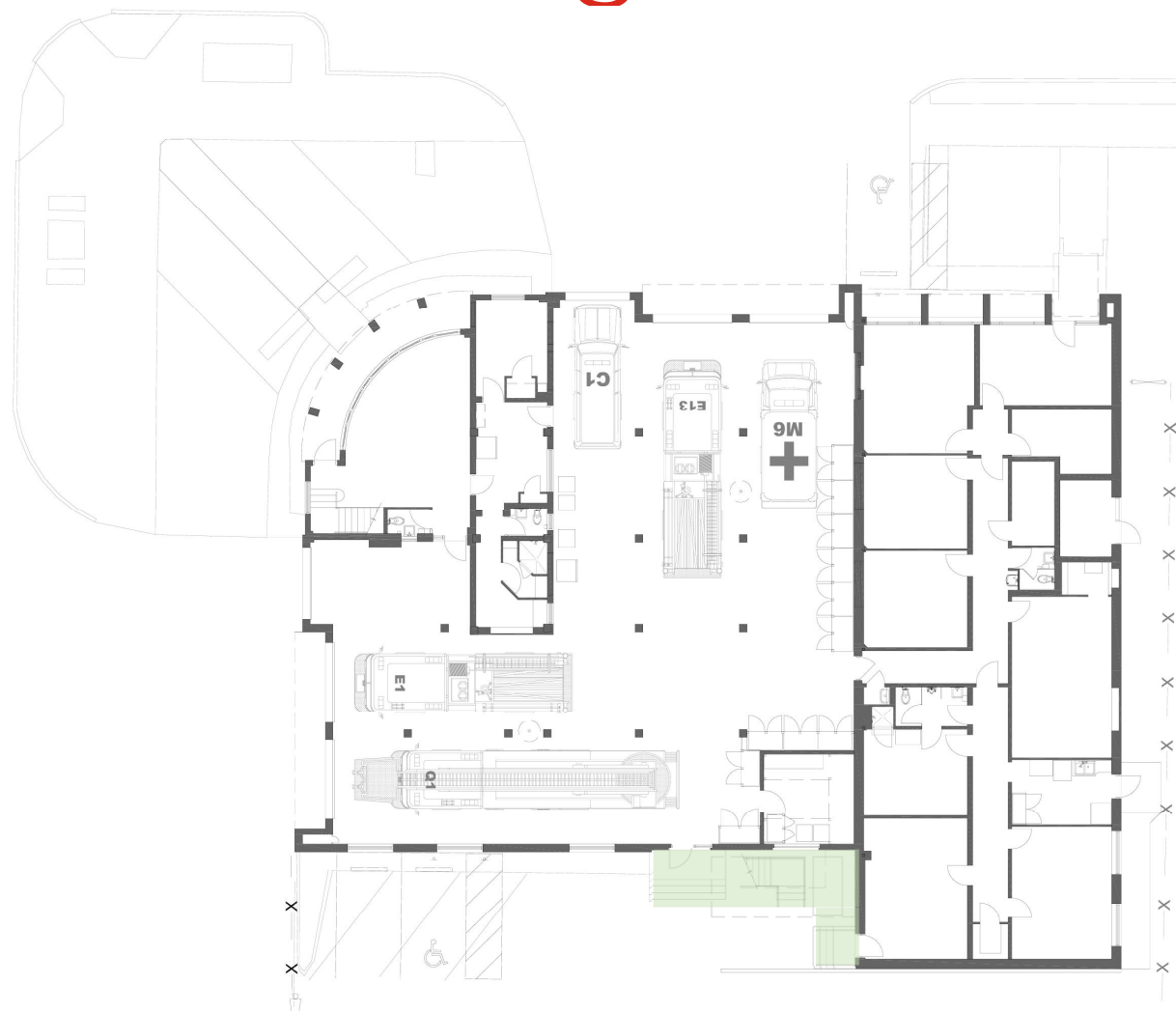


National Register  
of  
Historic Places

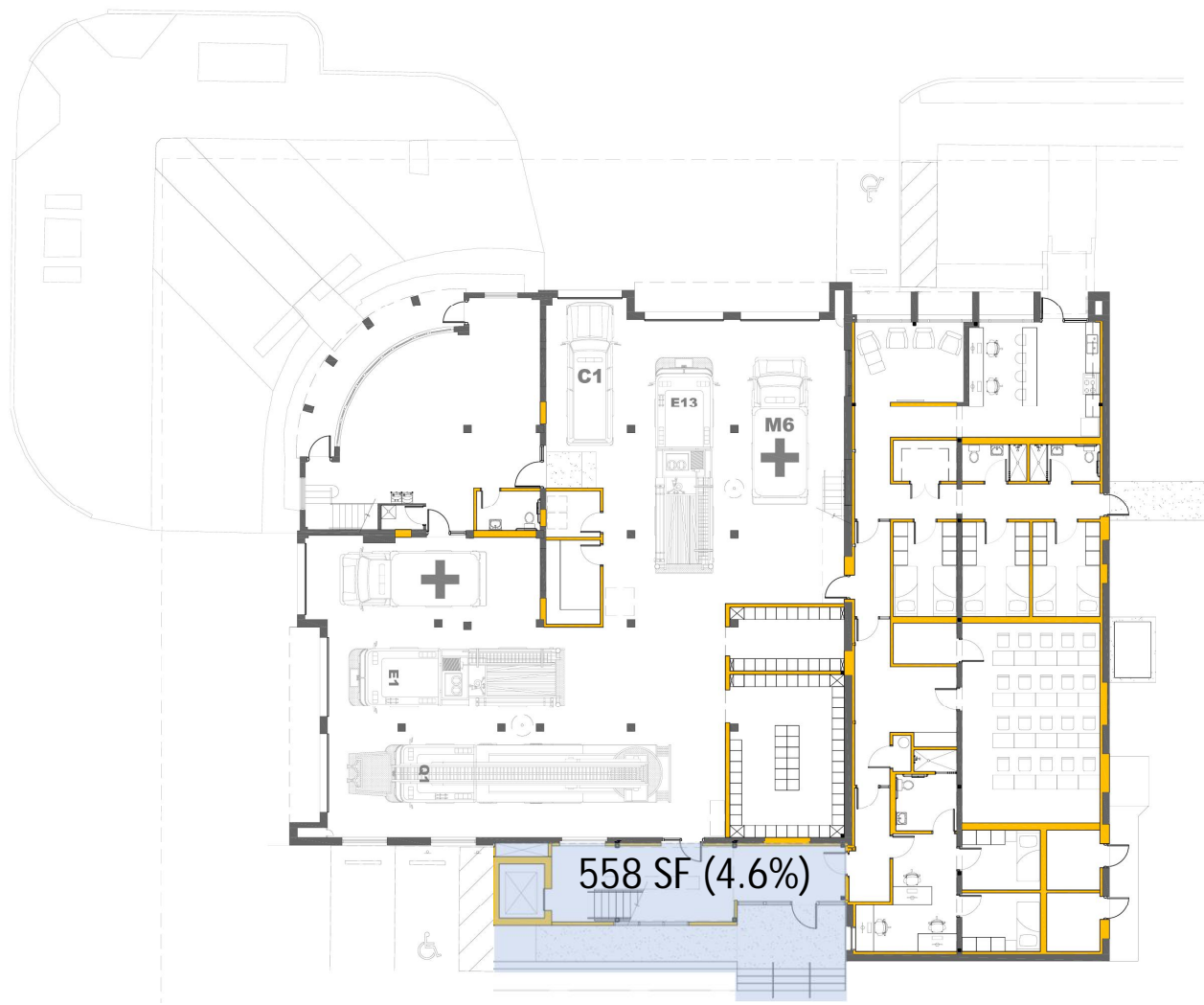
# Plan Changes

Change to Existing

Addition



Existing



Proposed

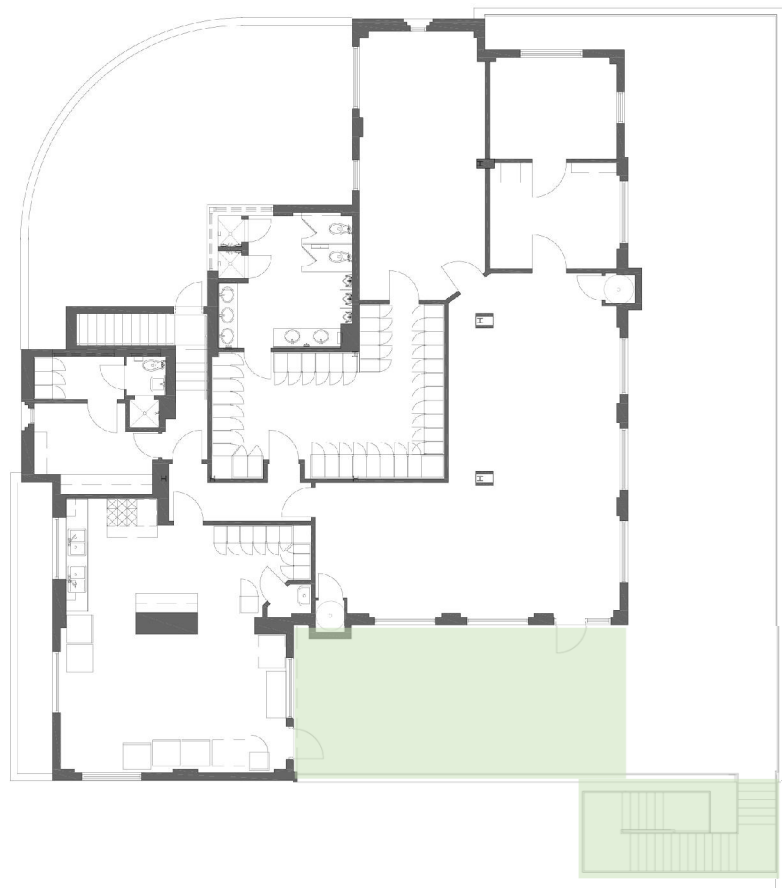
First Floor



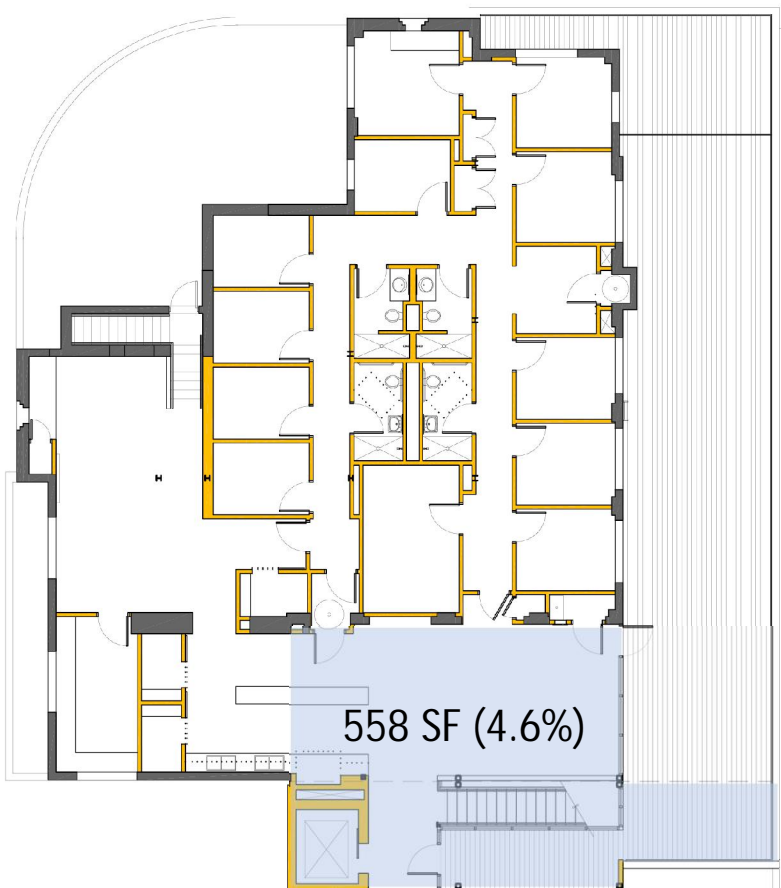
# Plan Changes

Change to Existing

Addition



Existing



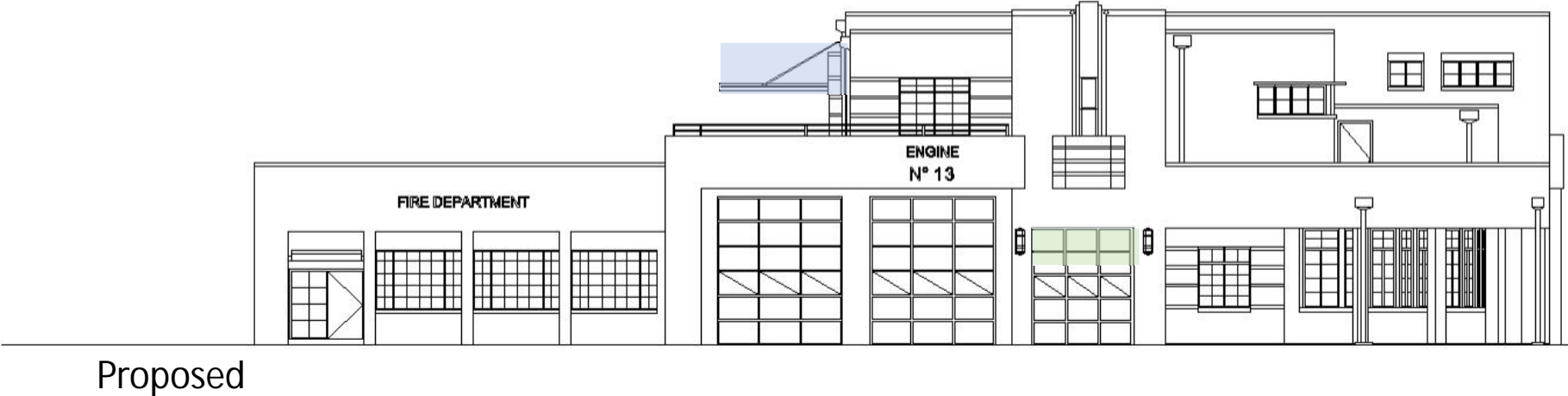
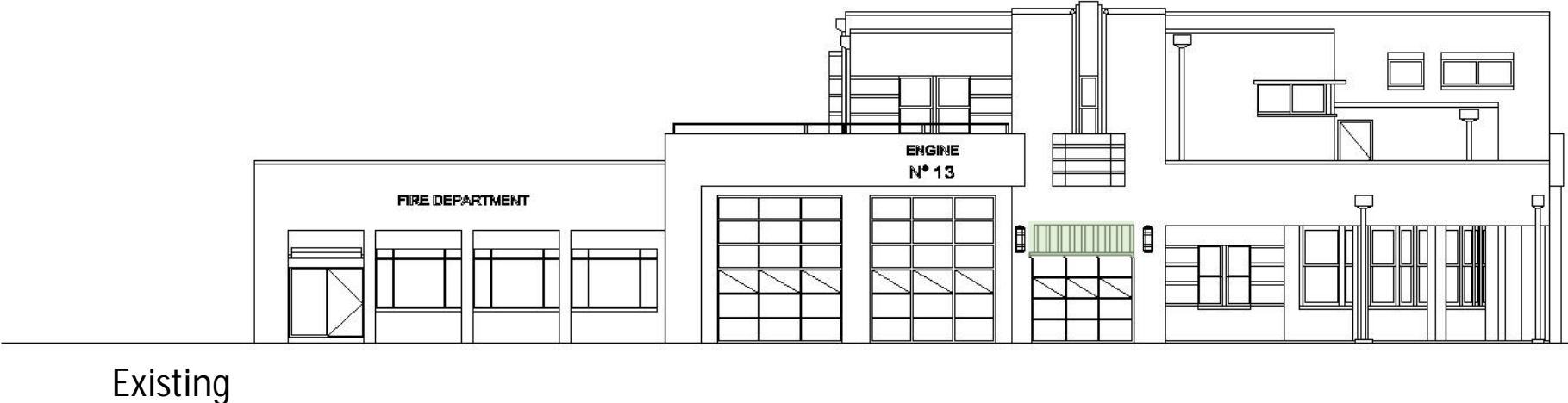
Proposed

Second Floor

# Façade Changes

Change to Existing

Addition



E. 5<sup>th</sup> Street

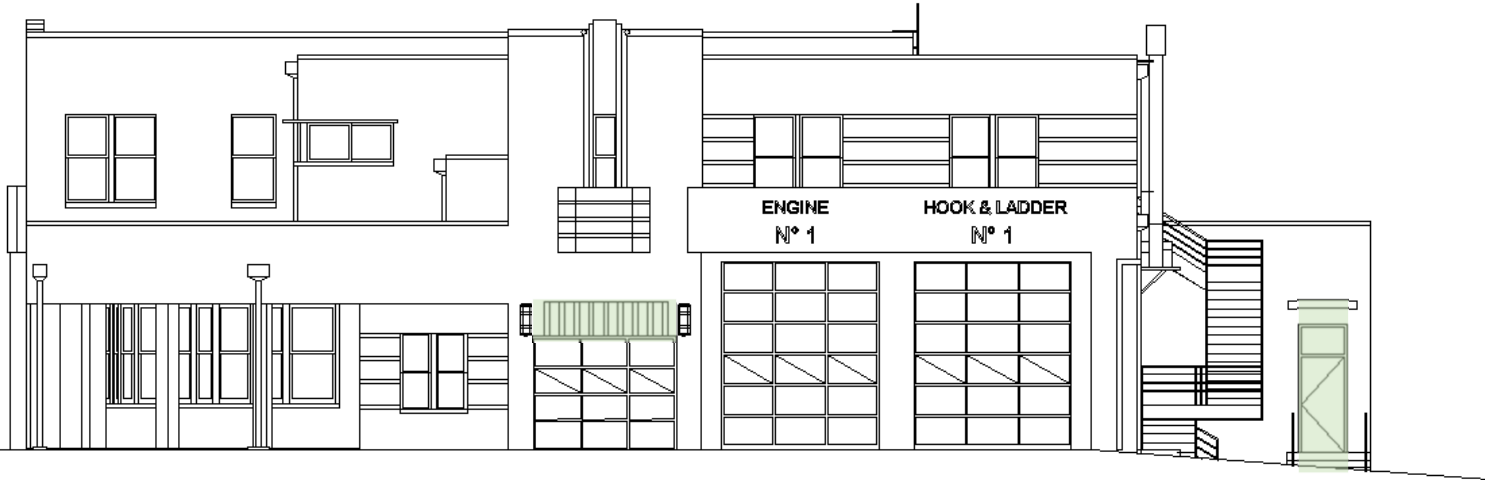


# Façade Changes

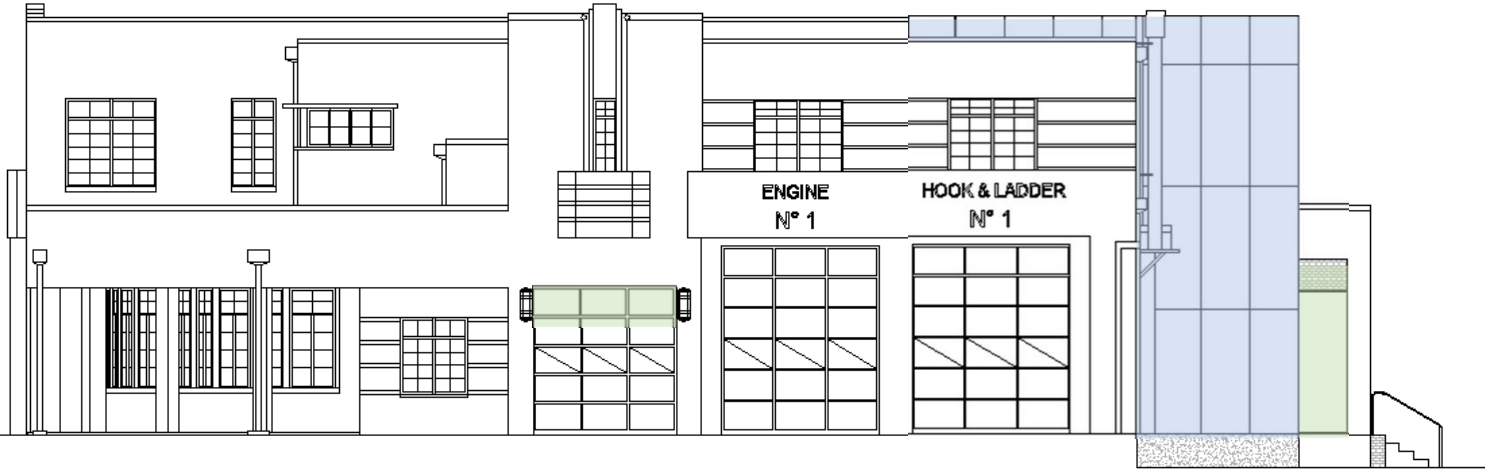
Change to Existing

Addition

Existing



Proposed



Trinity Street

# Signage Changes



Existing

Main Sign



Proposed



# Signage Changes



Remove

Ancillary Signs



Add

City of Austin  
Central Fire and EMS Station

## New Addition

Rob Robbins, Studio Director  
WestEast Design Group  
Architect



WESTEAST  
DESIGN GROUP

Historic Landmark Commission – Design Overview Presentations  
28 June 2021



# Addition

Minimize the addition  
to only what is  
programmatically  
necessary

Original=12,031 SF /  
Addition=515 SF / 4.3%  
gross square footage  
increase



Keep It Small



# Addition

Use the parking-lot side to preserve the 5<sup>th</sup> and Trinity Street facades which are the most crucial to the historic character of the building

Delineate what is new through material and tone while maintaining sympathetic massing and scale without emulation



Keep It Separate



# Addition

Recess the new entry to not overpower the importance of the crucial original corner entry



Keep It Deferential



# Addition

Bridge the massing of the annex and the original building to pull the forms into a distinguishable but well-composed and complimentary resulting façade



Keep It Unified

# Addition

Use glazing to provide visibility to the original structure playing off the layering in the original design



Keep the Original Visible



# Addition

Provide art in public places to continue the aspirations of the original design that Austin be a modern and progressive city



Keep the Progressive Vision of the Original



# City of Austin Central Fire and EMS Station

## Thank You



Historic Landmark Commission – Design Overview Presentations  
28 June 2021