

AUS Cargo Development East



Austin-Bergstrom
International Airport



• EXPANSION OF CARGO APRON CAPACITY

- 89,400 SF PEMB Cargo Facility
- Expansion of Air Side Pavement
- New Truck Loading Dock
- 158 Space Employee Parking
- Austin Energy Green Building 3-Star
- New Water Quality/Detention Pond
- Landscaping, Yardscape & Sidewalks
- Energy Efficiency
- Water use reduction (indoor and outdoor)
- Electric vehicle charging (capable spaces and electric GSE)
- Heat island reduction
- Access to quality drinking water
- Low Emitting Materials, Construction Waste Management, and Local Art



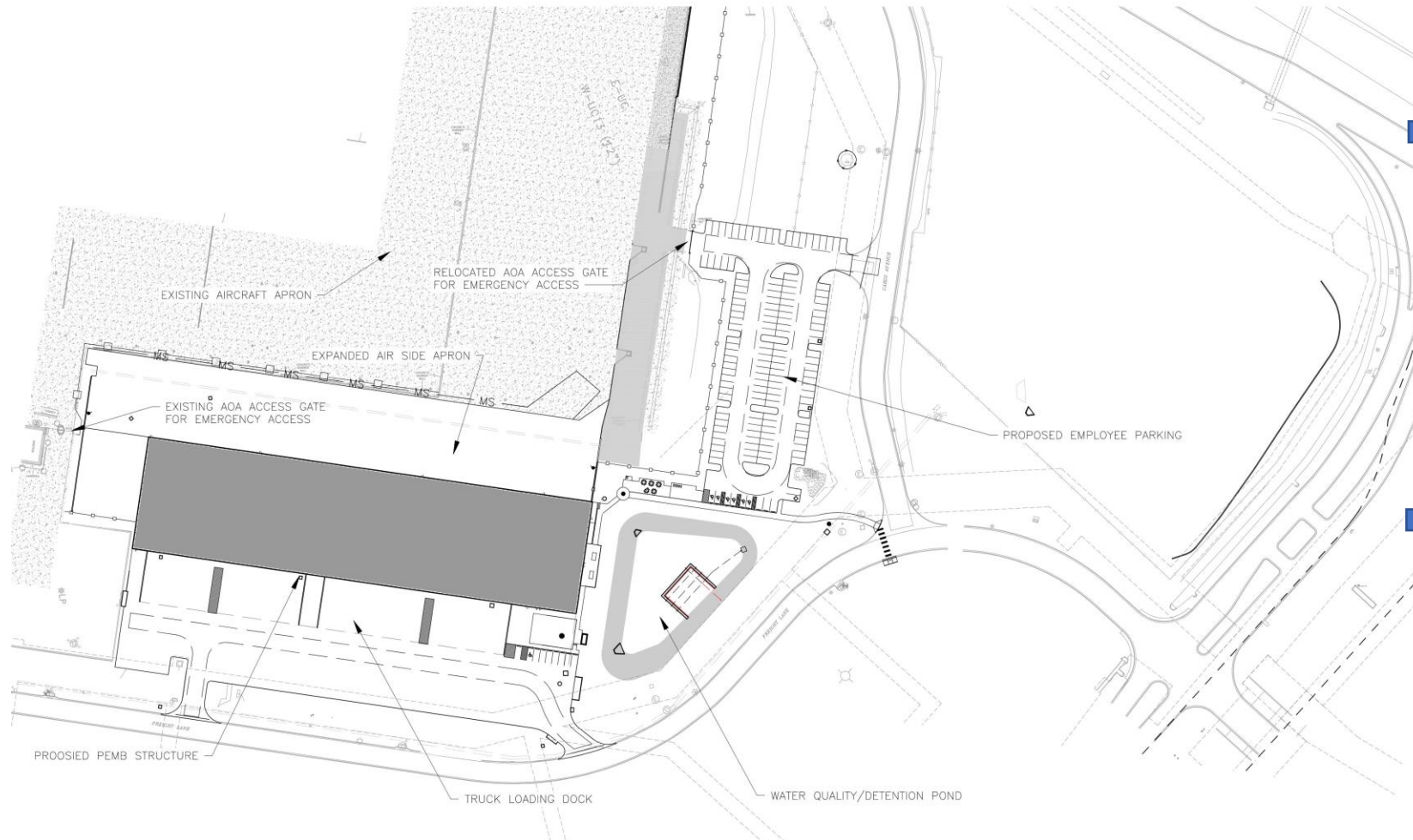
PROJECT LOCATION



➔ Project includes expansion of cargo processing capacity at the southeast corner of the existing cargo apron.

➔ Improvements are consistent with the adopted ABIA Master Plan.

OVERALL SITE PLAN

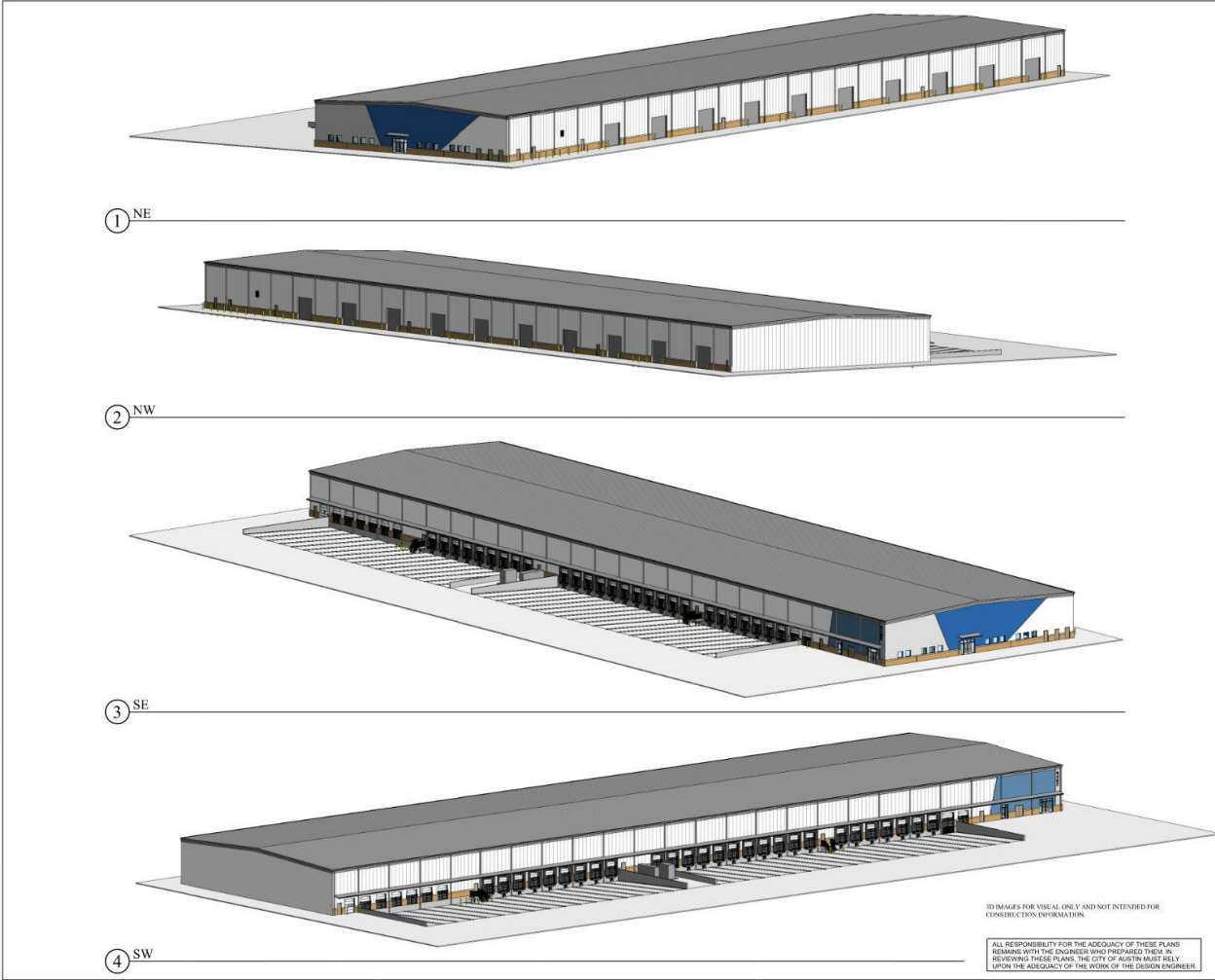




➔ 20.5-acre limit of construction

➔ Constructed around southeast corner of existing cargo apron

➔ Project frontage on both Freight Lane and Cargo Avenue

ISOMETRIC VIEWS



 <p>19JUL21</p>		<p>ATKINS 11801 Domain Blvd., Suite 500 - Austin TX 78758 - (512) 327-6840</p>	
<p>AUSTIN-BERGSTROM INTERNATIONAL AIRPORT</p>		<p>AUS CARGO DEVELOPMENT EAST</p> <p>5402 FREIGHT LN, AUSTIN, TX, 78719 <small>Maple Creek - 480-0000-0040 Project Name: 00000</small></p>	
<p>Drawn by: ON</p> <p>Checked by: BH</p> <p>Coord. Check: TT / KP</p> <p>File Name: L3118-20-AG-9-01.dwg</p> <p>Date: 02AUG21</p> <p>Scale: No. Date Description By</p>		<p> Austin-Bergstrom International Airport</p>	
<p>KEY MAP</p>		<p>SECTOR: J3</p> <p>DRAWING DESCRIPTION: 3D REPRESENTATIONS - ISOMETRICS</p> <p>SHEET NO: AG-9-01</p>	

3D IMAGES FOR VISUAL ONLY AND NOT INTENDED FOR CONSTRUCTION INFORMATION.

ALL RESPONSIBILITY FOR THE ADEQUACY OF THESE PLANS REMAINS WITH THE ENGINEER WHO PREPARED THEM IN REVIEWING THESE PLANS, THE CITY OF AUSTIN MUST RELY UPON THE ADEQUACY OF THE WORK OF THE DESIGN ENGINEER.

- ➔ Pre-Engineered Metal Building
- ➔ Truck loading dock on the south side
- ➔ Aircraft cargo operations on the north side

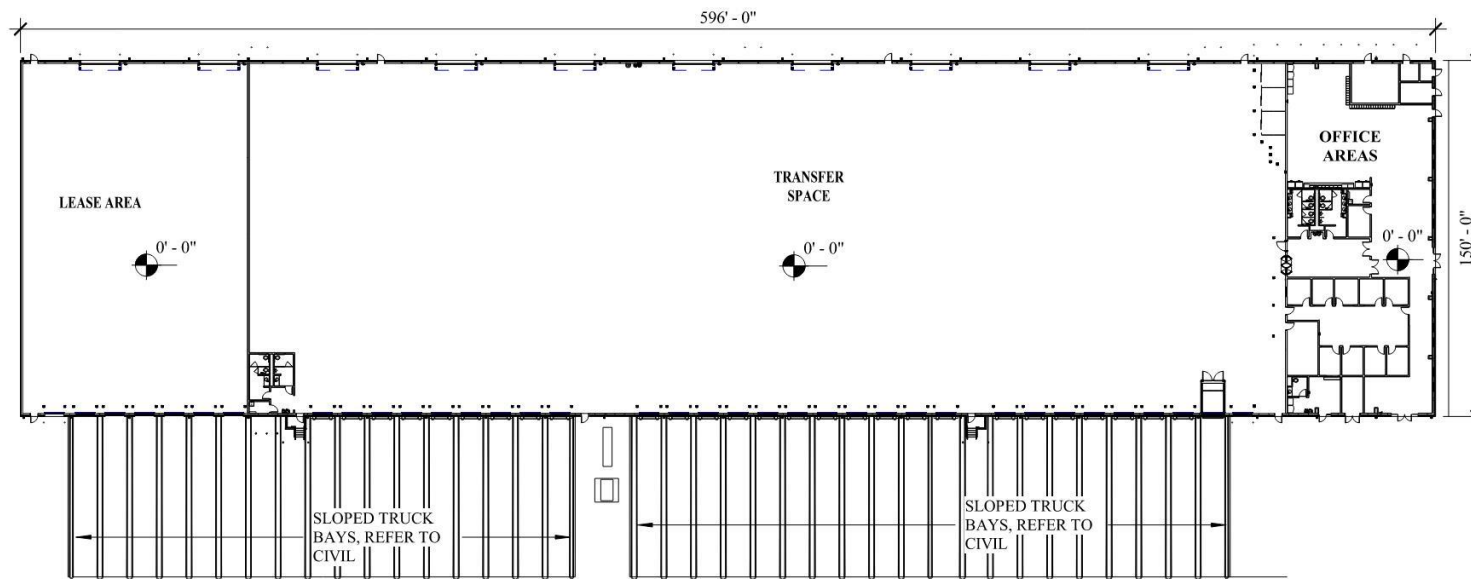


SOUTHEAST PERSPECTIVE



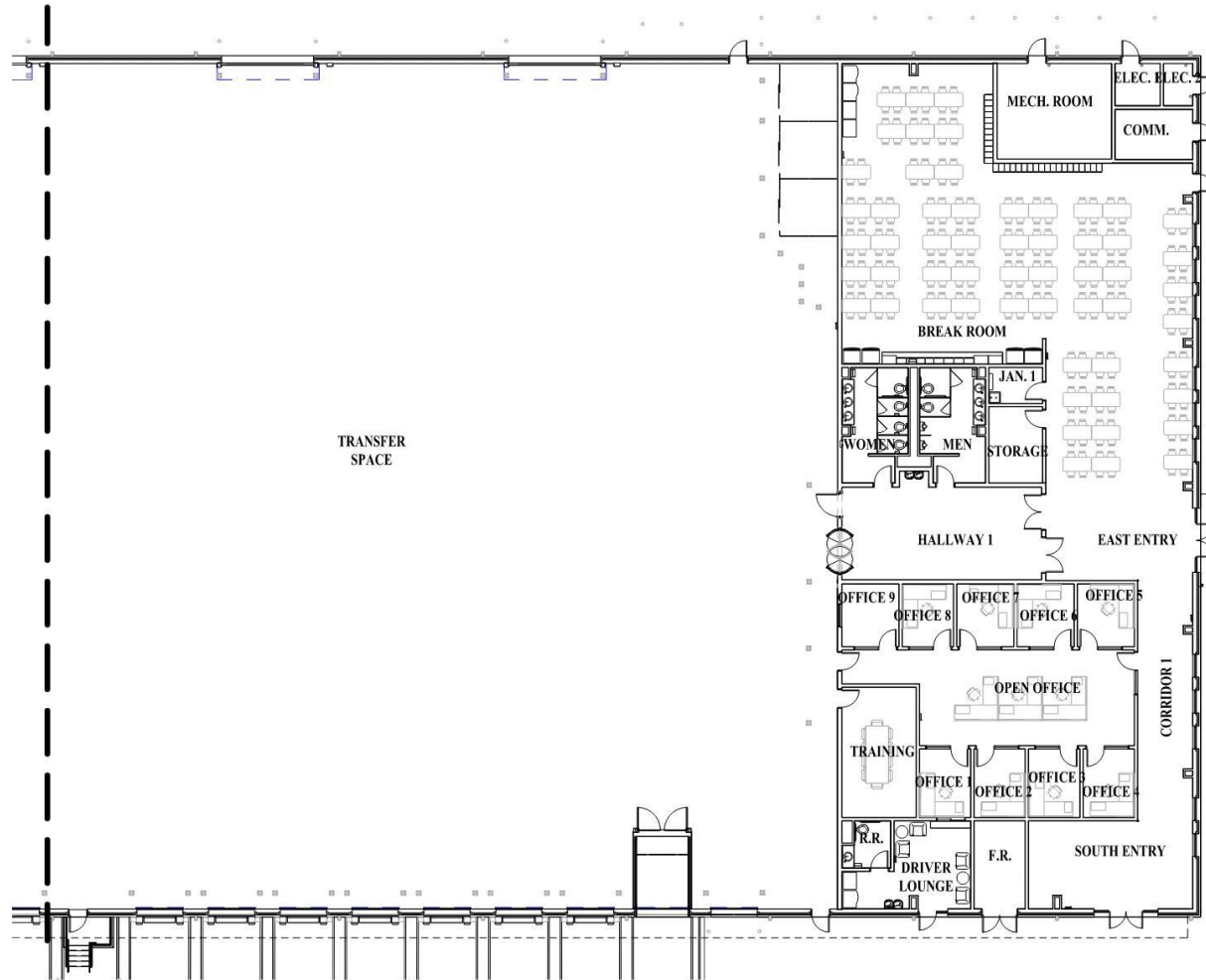
- ➔ Pre-Engineered Metal Building
- ➔ Entry plazas on the east elevation and on the east end of the south elevation
- ➔ Metal building with CMU skirt

OVERALL FLOOR PLAN



- ➔ Finished break and office space east end, App. 9,400 SF
- ➔ Balance of building cargo operations
- ➔ Total size approximately 89,400 SF
- ➔ AEGB 3-Star Rating

FINISHED SPACE FLOOR PLAN

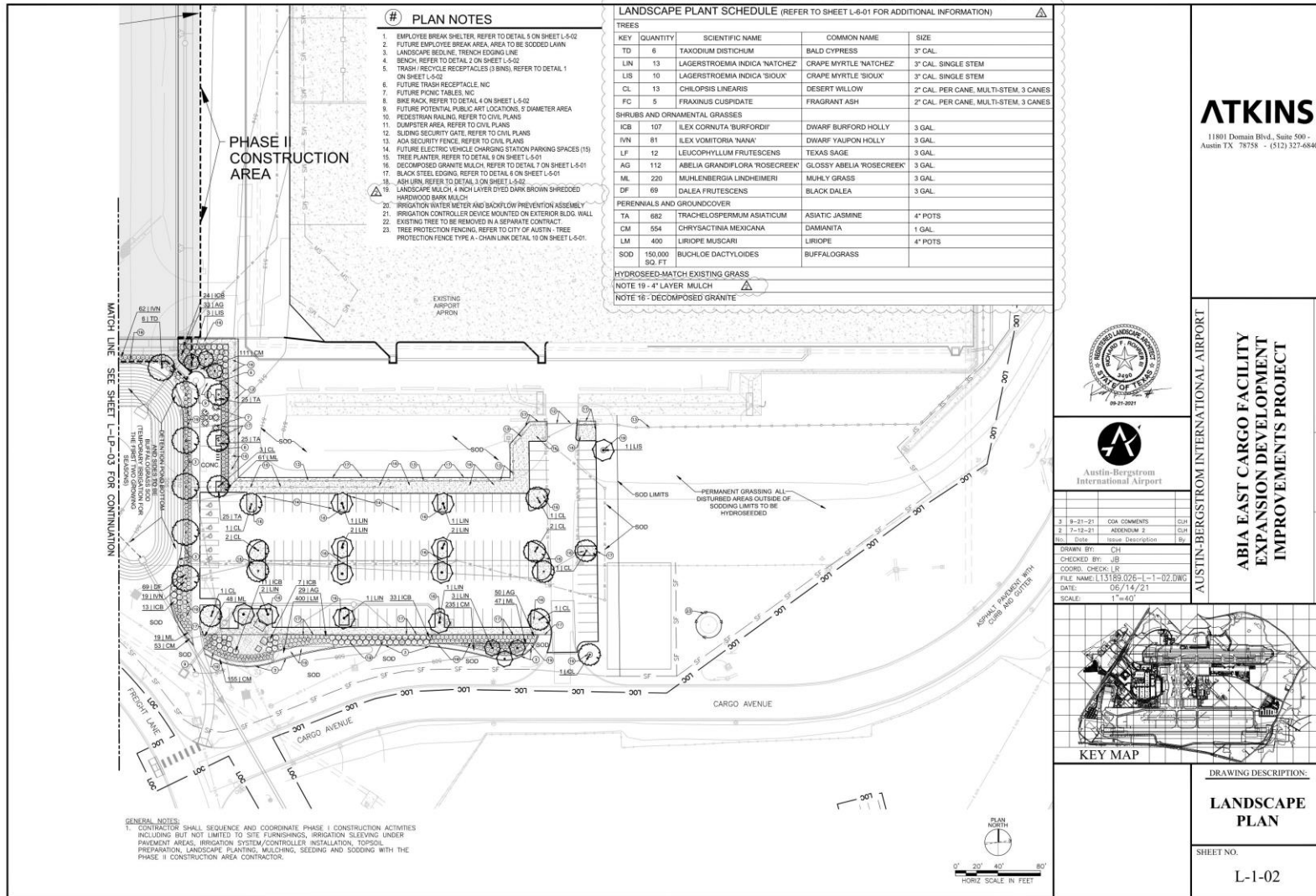


➔ Restrooms, break areas & lunch area

➔ Transfer space is considered secure area of ABIA

➔ On-site office space and driver lounge

LANDSCAPE PLAN 1

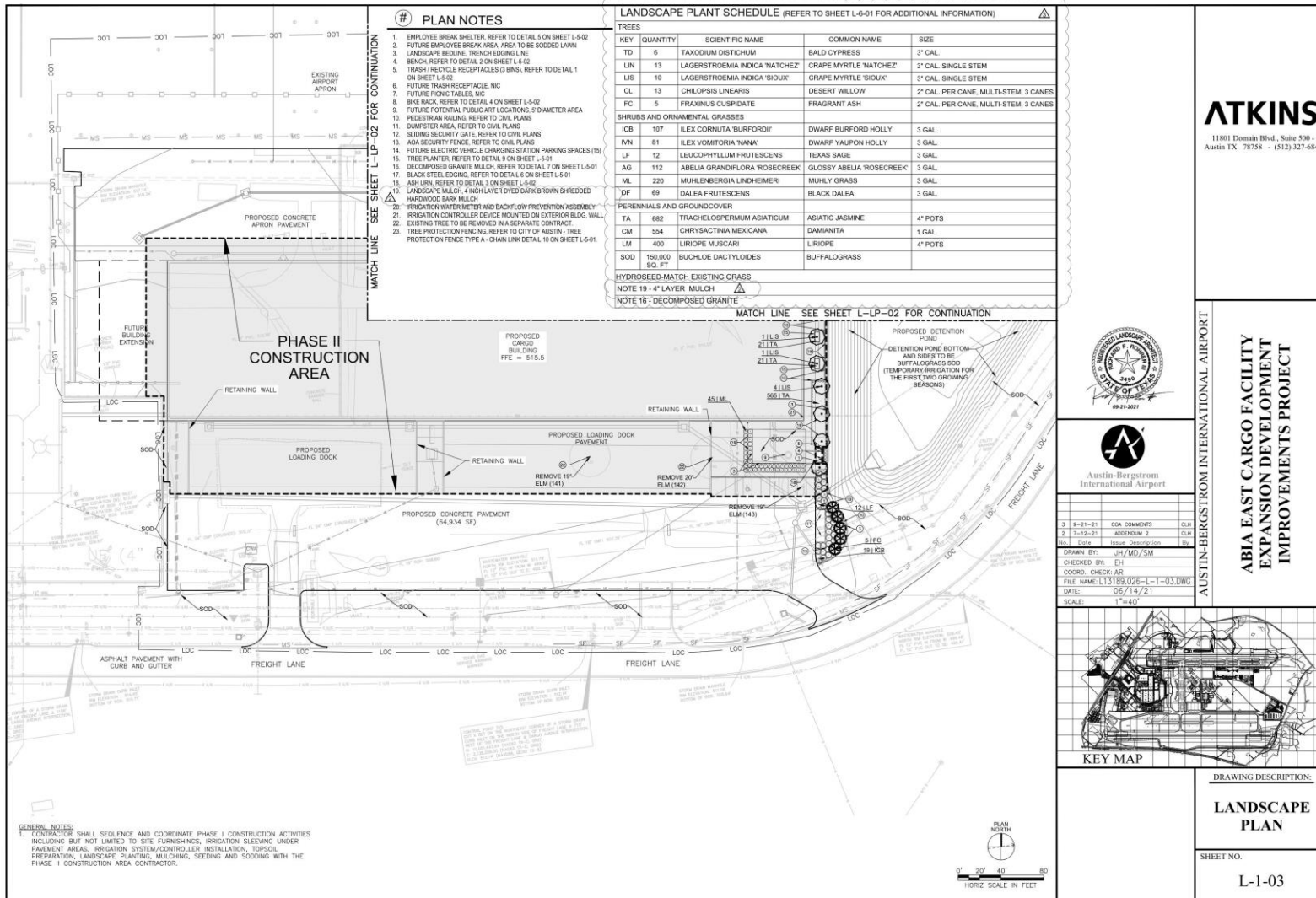


➔ FAA compliant landscaping

➔ Break area at northeast corner of building

➔ Landscaped parking area

LANDSCAPE PLAN 2



➔ Break area at southeast corner of building

➔ Landscaped entry courtyard

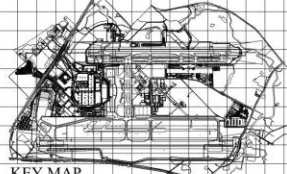
➔ No landscaping on air side of project

ATKINS

11801 Domain Blvd., Suite 500 - Austin TX 78758 - (512) 327-6840



13	9-21-21	OK COMMENTS	CLP
2	9-12-21	ADDRESS 2	CLP
No.	Date	Issue Description	By
DRAWN BY: JH/MG/SM			
CHECKED BY: JH			
COORD. CHECK: AR			
FILE NAME: L13189.036-L-1-03.DWG			
DATE: 05/14/21			
SCALE: 1"=40'			



DRAWING DESCRIPTION:	
LANDSCAPE PLAN	
SHEET NO.	
L-1-03	



Austin-Bergstrom
International Airport

