

City of Austin

Fire Station 22 / EMS 12

WEST

Design Commission Presentation  
25 October 2021





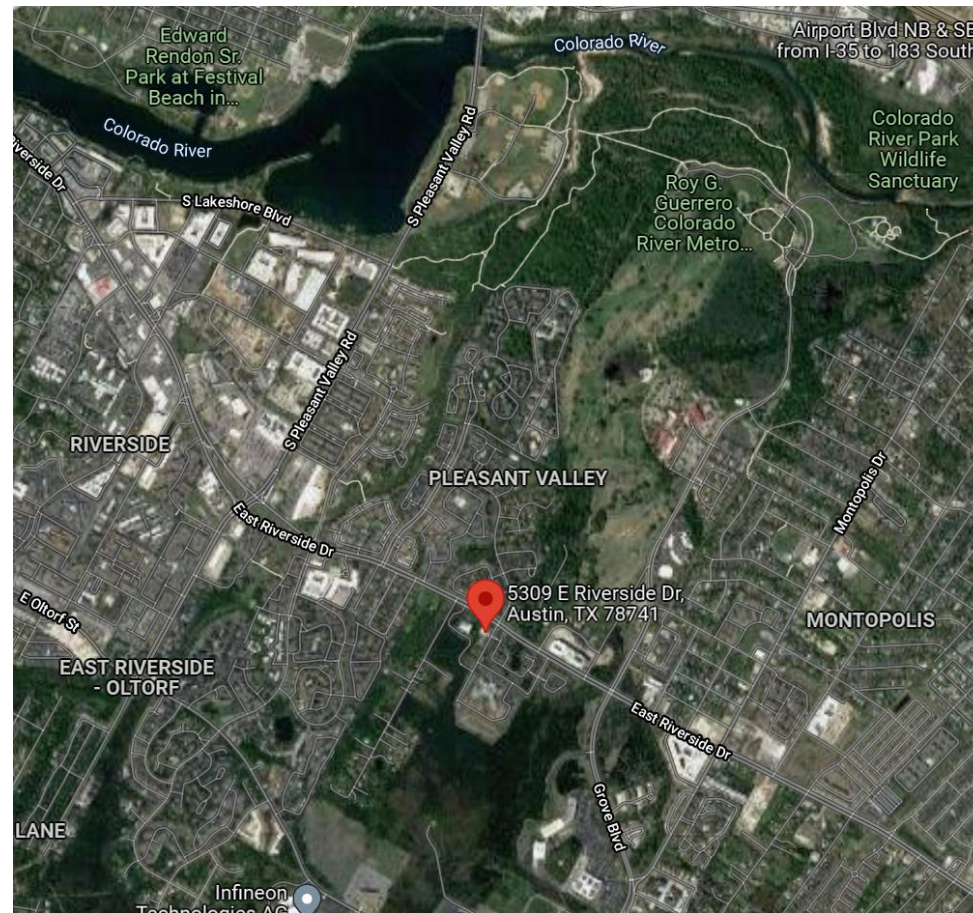
# Context

Location: 5309 Riverside Drive (at Faro Drive)

There is an existing, non-historic station at the site that is slated to be demolished

Site is between Tokyo Electron and the Colorado River

Site has a cell tower at the back (south) and significant trees at the front (north, by Riverside drive)



Introduction





# Concept

## Design Concept Statement

The design of Fire Station No. 22/ EMS 12 is rooted in the concept of **public pride**. The project is sited between two major and contrasting sources of pride for Austin; that of **nature and technology**. As a city, Austin is known for its devotion to nature and ecological preservation as exemplified by Barton Springs and is also world renowned as a hub of **technological innovation** from silicon chips to digital apps. The neighborhood represents a microcosm of these elements in that it is between the Colorado River to the north and the US headquarters of Tokyo Electron to the south. At an even smaller scale, the project site is **heavily wooded** on the north and features **technological infrastructure** in the form of a cell tower to the south.

The design addresses these two elements of pride through **site plan** arrangement, the adjacencies of **internal functions, materials**, and representative associations with the **mission** and activities of the **team** working there.

The site and programmatic arrangement places the **human elements** of the program such as the living/sleeping quarters to the north end representing **nature** and places the parking lot full of cars and trucks at the south end representing the **technology** of machines. The apparatus bay in the middle is where the people and the technology come together to **serve the community**.

Building structure reflects the elements of nature through materials such as exposed, **heavy timber** on the north side and reflects elements of technology on the south through materials that have undergone a higher level of human intervention such as **steel**. The apparatus bay marries the two through the tectonics of steel and **timber**.

The sequence of moving through the project is representative of the **emotional journey** of this type of public service. The parking lot represents the individual in the literal nature of showing up one by one and being placed in separate stalls and then moving along a path to the living quarters where the **individual** becomes a part of the **collective team**. The apparatus bay in the center is where the team building is tested, and individuals are often **traumatized** by the dangerous and sometimes fatal nature of their work. When they return, the **recovery** process happens in the living areas surrounded by the healing power of nature.

The design evokes **public pride** in the elements of the site, the neighborhood, the city, the mission of the departments, and the actions of those working and serving in the facility. Through these **connections**, the building will not only serve the functional needs of the program but will have the benefit of **outreach to the community** through identifiable and unifying elements of Austin pride.

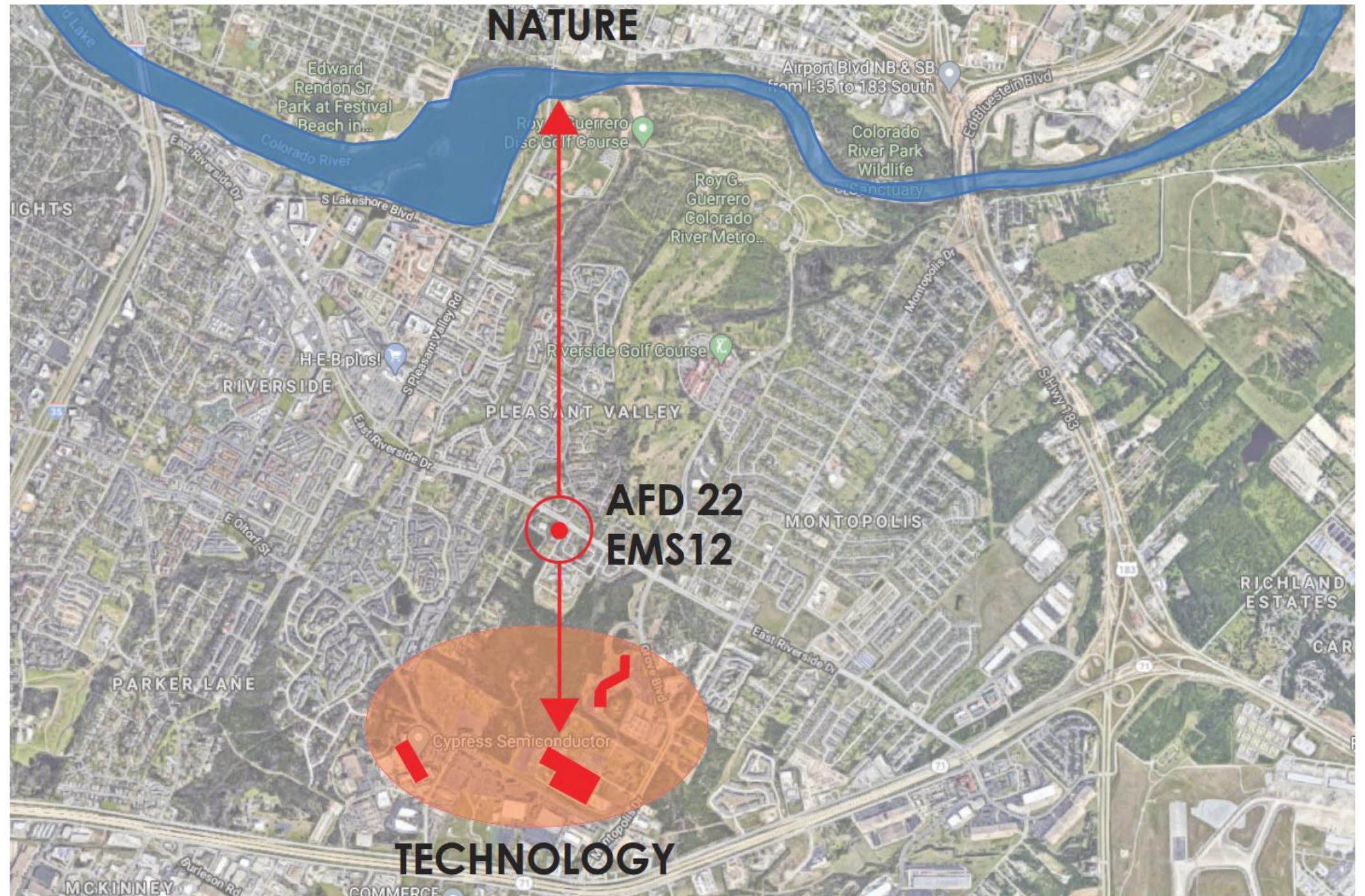
## Statement





# Concept

Example of the duality at the city level showing the site between the two points of civic pride with technology to the south and nature to the north.



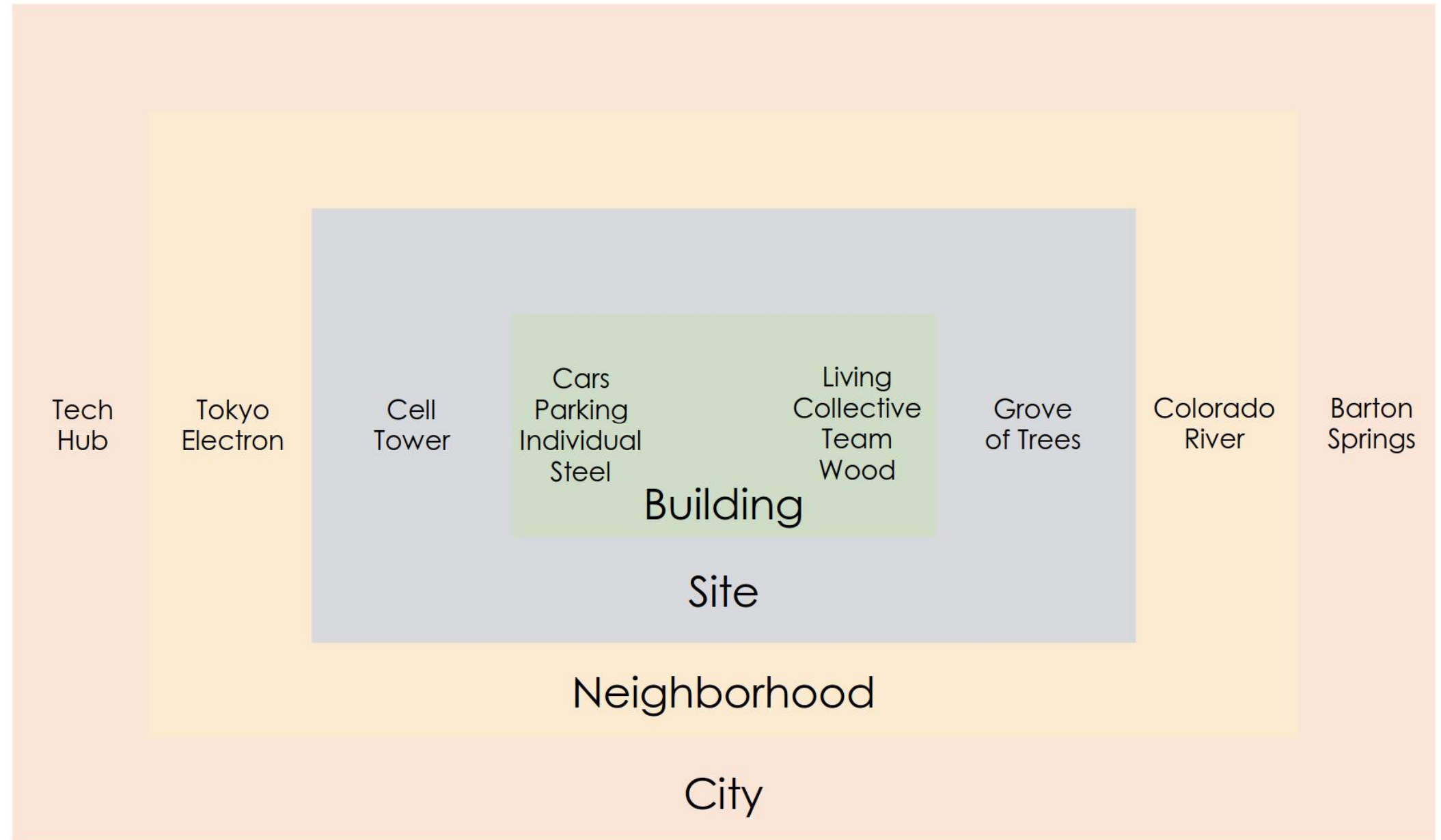
Overlay





# Concept

Demonstration of how the concept works at multiple levels from the city to the building.



Diagram



# Concept

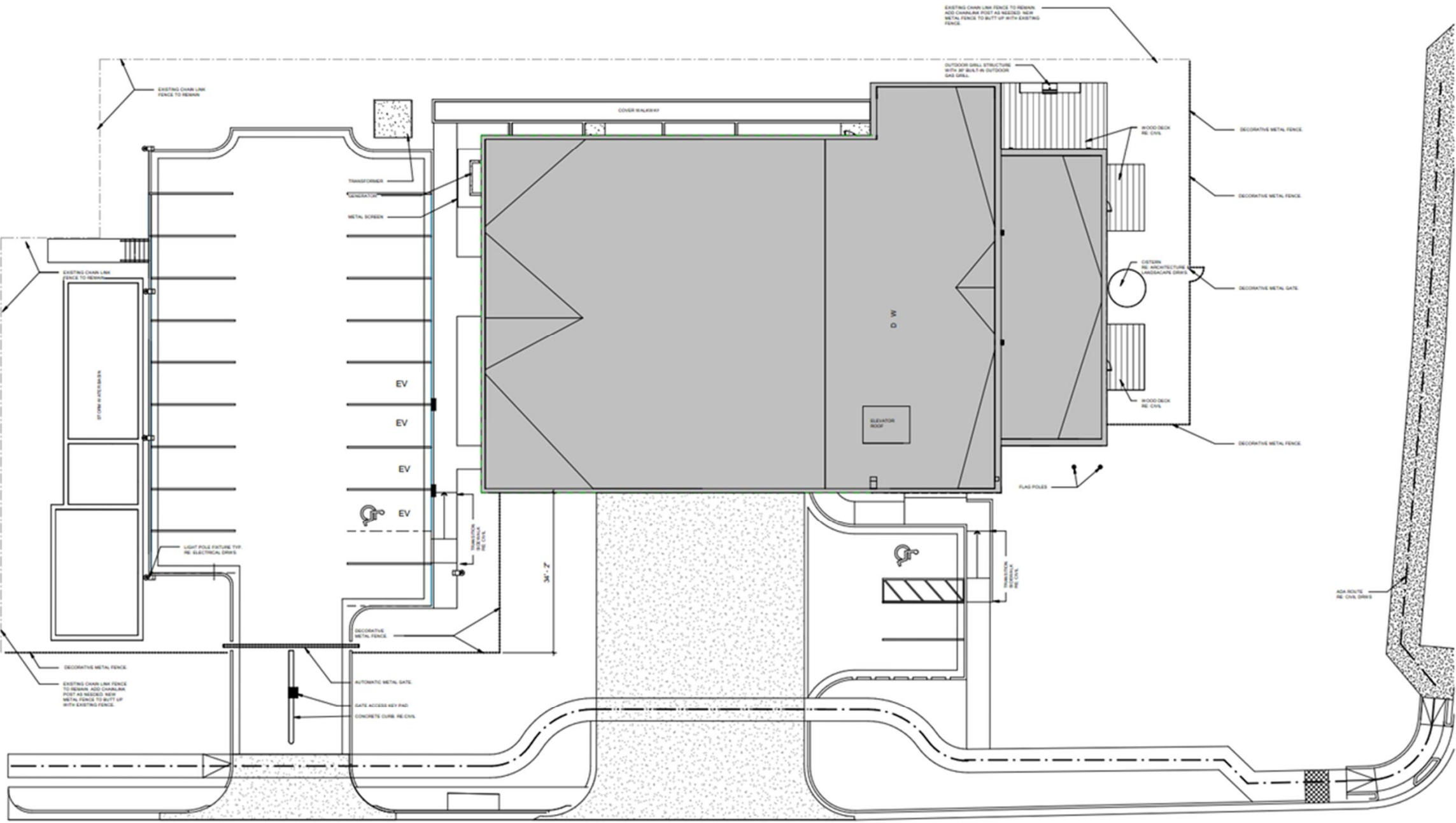
Showing how the concept came together on the site with the individual and technology issues to the south by the cell tower and the collective, nature, and healing areas to the north by the grove of trees.



Layout



# Plan



# Site





## First Floor





# Plan



Second Floor



# Rendering

This image shows the public face of the station prominently addressing the major intersection.



Corner of Riverside and Faro





# Rendering

Signage and massing combine to make a welcoming, intuitive, and easy-to-find entry.

The view through to the apparatus bay creates a literal sense of transparency of the department to the public it serves.



Front Façade





# Rendering

The main entry is on axis with the employee entrance coming off the secure parking lot creating a direct connection between the building occupants and the public.

Back-illuminated signage connotes pride, purpose, and 24-hour visibility.



Main Entry





# Rendering

Employee parking is on the south end of the site next to the cell tower. This is in keeping with the concept of technology being on the opposite end of the site from the trees which represent nature.



Employee Parking





# Rendering

After parking, employees enter using a covered walkway that takes them from the individual status of the parking lot to the collective status of the living quarters.

The sequence is surrounded by trees on the west side and the purpose of their being there (the apparatus bay) on the east.



Employee Entry Sequence





# Rendering

Due to the stress, and even trauma of working in the life-safety field, this walk allows a mental separation between home and work.



Covered Walkway





# Rendering

The steel, almost Miesian nature of the covered walkway represents the technology side of the site while the trees to the north create a focal point of moving toward the nature side of the site.



Transition From South to North





# Rendering

The living quarters face the grove of trees on the north side of the site.

Large windows to the west focus on collective gathering spaces that help to create a home-away-from-home atmosphere.



Healing Nature of the Living Quarters

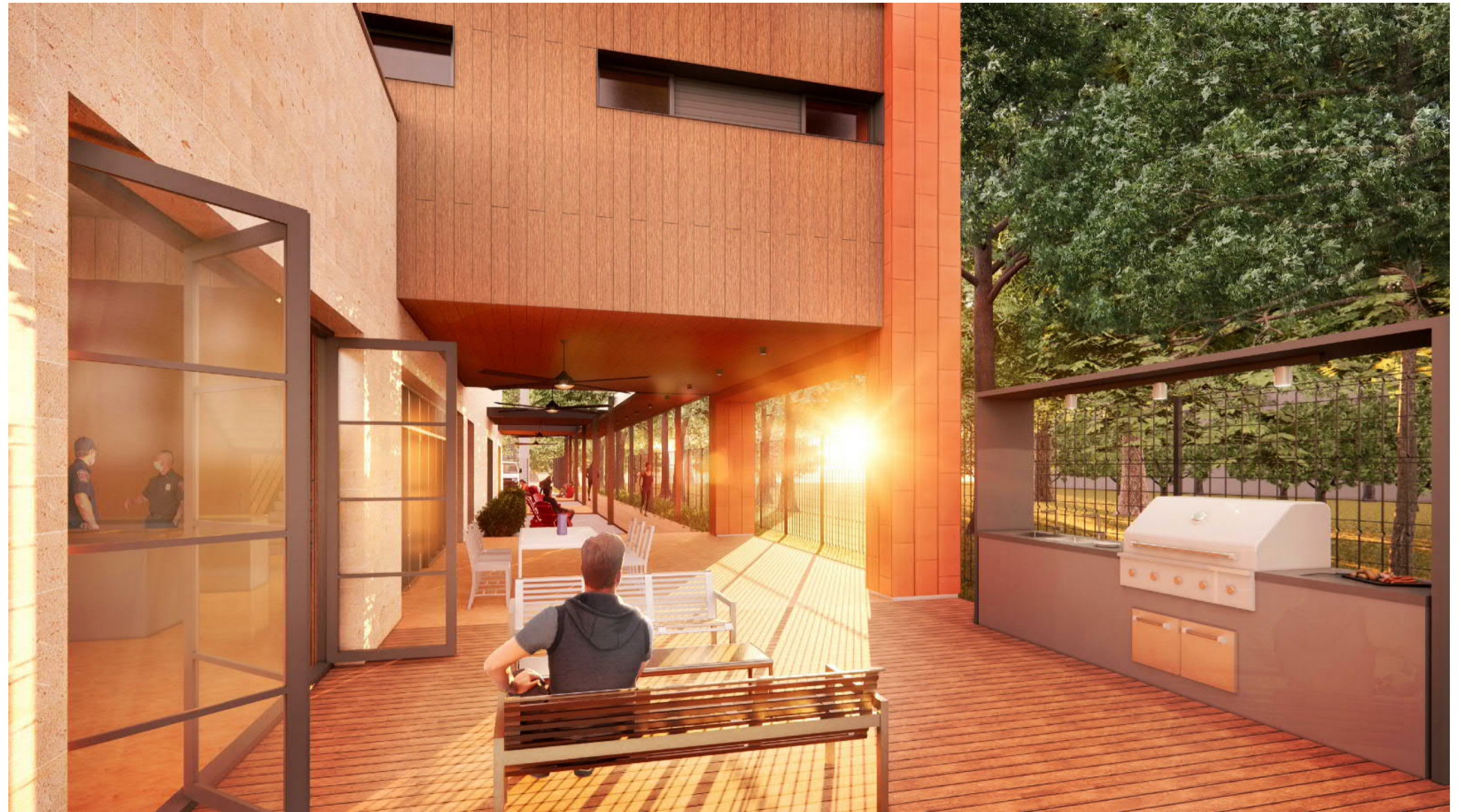




# Rendering

The day room opens to an outdoor dining and grilling area.

Part of the area is covered with fans, and the other part is open to sky.



Connection Between Inside and Out





# Rendering

Each day room has an indentation in the façade that opens to an outdoor mediation area perfect for decompressing from the stress caused by going out on a call.



Meditation Areas





# Rendering

The exterior lighting reinforces the idea of this being a 24-hour facility that serves as a beacon of safety to the surrounding neighborhood.

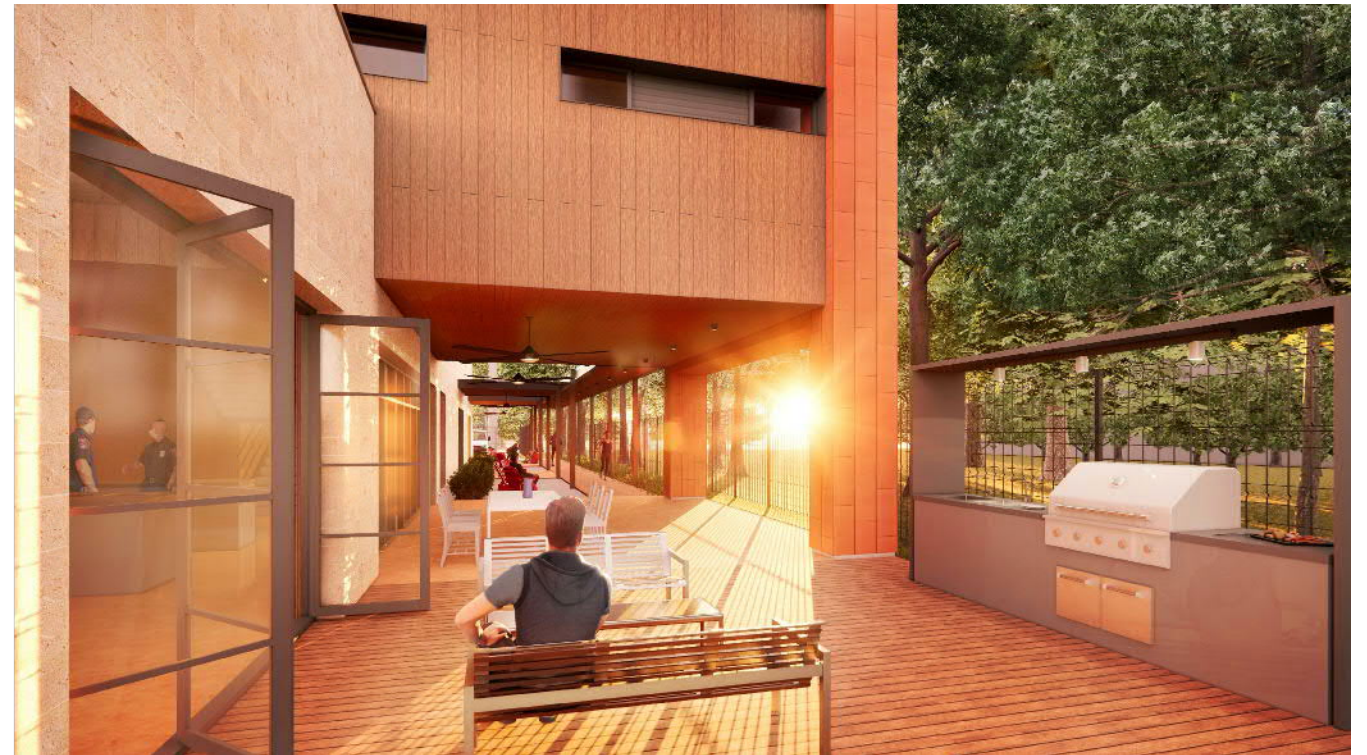


Nighttime View





# Questions and Discussion





# WEST

WestEast Design Group, LLC  
Architectural, Interior Design, Planning  
Mechanical, Electrical + Plumbing  
210.530.0755 | [westeastdesign.com](http://westeastdesign.com)

