

# COLONY PARK DISTRICT PARK AQUATIC FACILITY

AUSTIN, TEXAS  
PARKS AND RECREATION DEPARTMENT  
DESIGN COMMISSION PRESENTATION  
DECEMBER 13, 2021



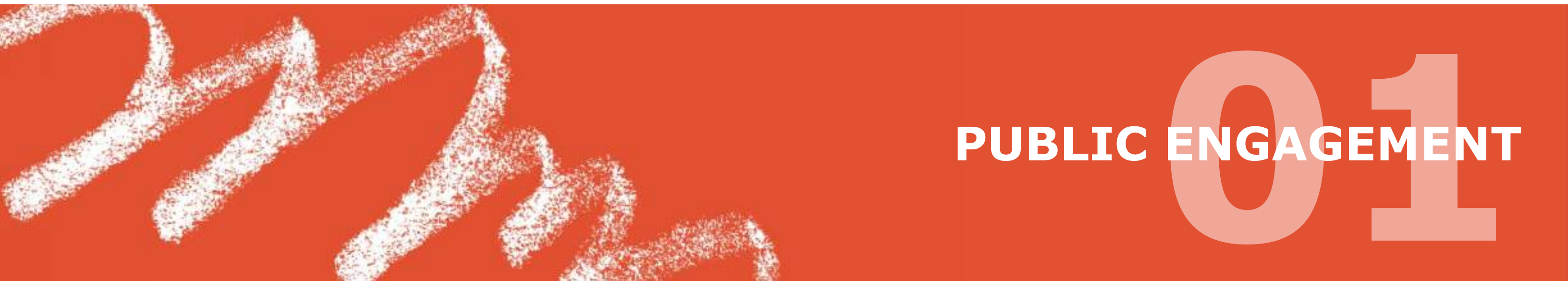
MarmonMok  
ARCHITECTURE

Design. Done.

# 00

## TABLE OF CONTENTS

- 01 | PUBLIC ENGAGEMENT
- 02 | SITE PLAN
- 03 | FLOOR PLANS
- 04 | PERSPECTIVES



# PUBLIC ENGAGEMENT

# 01

## MEETING #1: COMMUNITY RESULTS

## WHAT DO YOU ENVISION WHEN YOU THINK OF THE COLONY PARK POOL?



## MEETING #1: TOP RESULTS

### POOL ACTIVITIES



Recreational Swim



Swim Lessons



Water Games  
Basketball, Volleyball,  
Log Roll



Lap Swimming



Water Exercise

### POOL AMENITIES



Water Slides



Play Features



Water Bench



Lane Lines



Zero Entry

**MEETING #2: TOP RESULTS**

**BEST FULFILLS THE VISION**

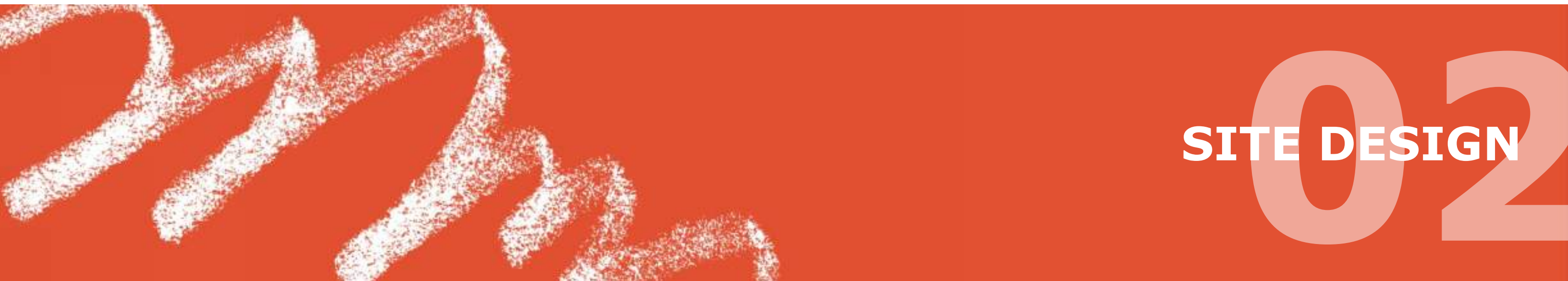


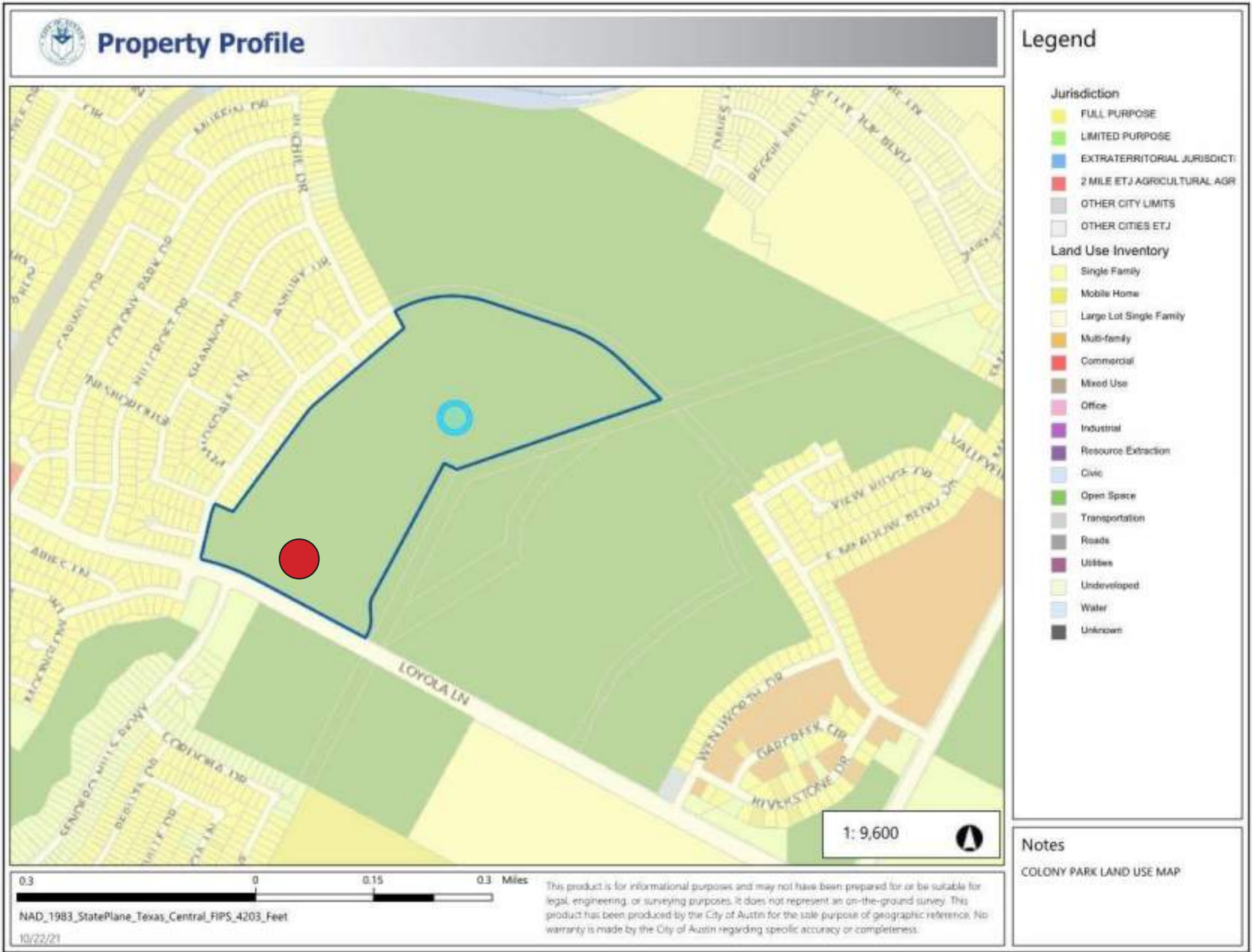
**POOL SITE LOCATION**

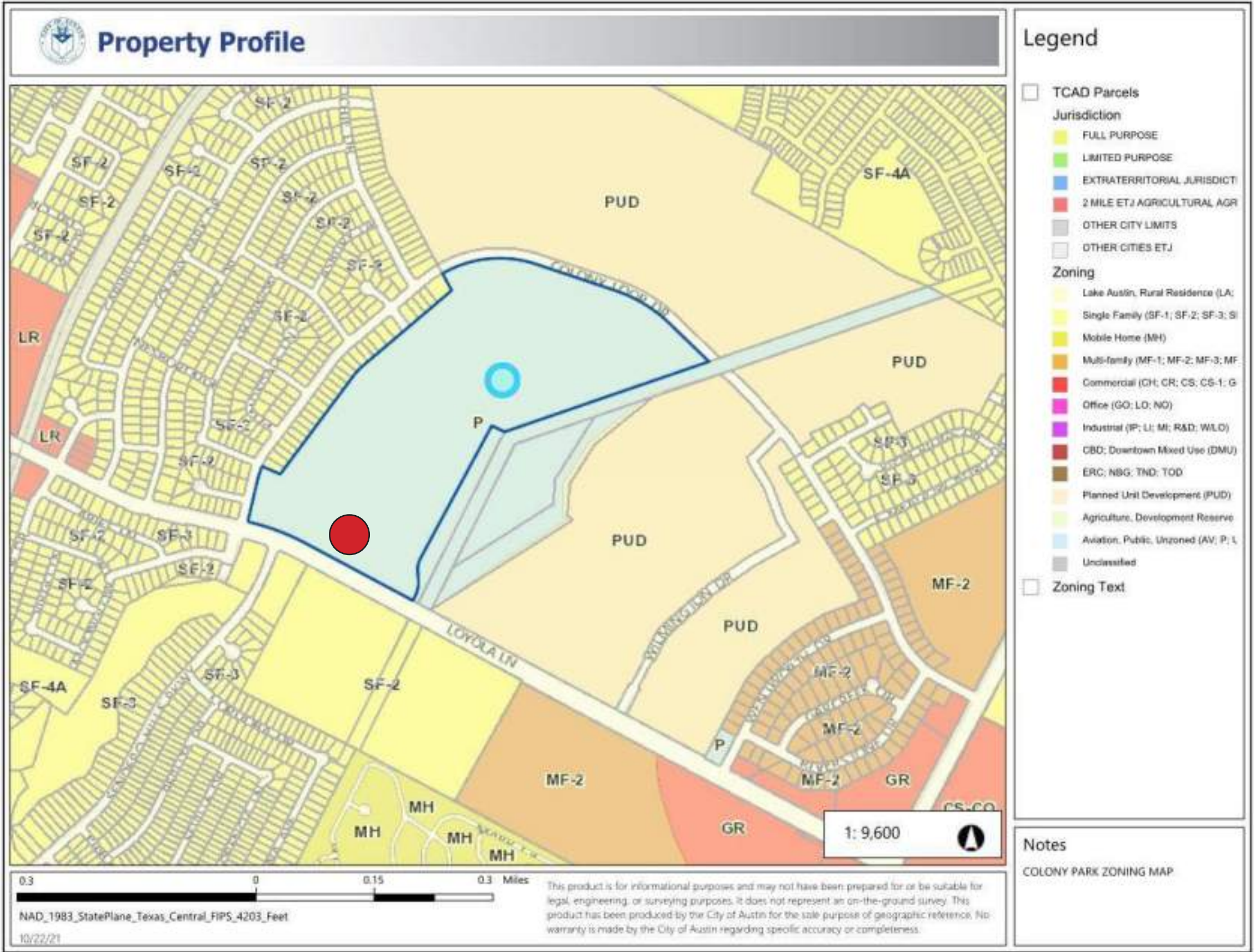


**PARKING LOT**













- LEGEND**
- ① WELCOME GARDEN
  - ② ENTRY HARDSCAPE
  - ③ RETAINING WALL
  - ④ BIKE RACKS
  - ⑤ PICNIC TABLES
  - ⑥ COMPOSITE DECKING
  - ⑦ LIMESTONE BLOCKS
  - ⑧ TURF
  - ⑨ ORNAMENTAL TREES, TYP.
  - ⑩ SHADE TREES, TYP.
  - ⑪ RAIN GARDEN
  - ⑫ EXISTING TREES
  - ⑬ PROPOSED POOL
  - ⑭ PROPOSED SHADE SAILS, TYP.
  - ⑮ BUILDING
  - ⑯ POOL DECK
  - ⑰ PARKING LOT
  - ⑱ DRY CREEK BED, TYP.
  - ⑲ GRAVEL MAINTENANCE BAND
  - ⑳ SLIDE
  - ㉑ ENTRY MONUMENT

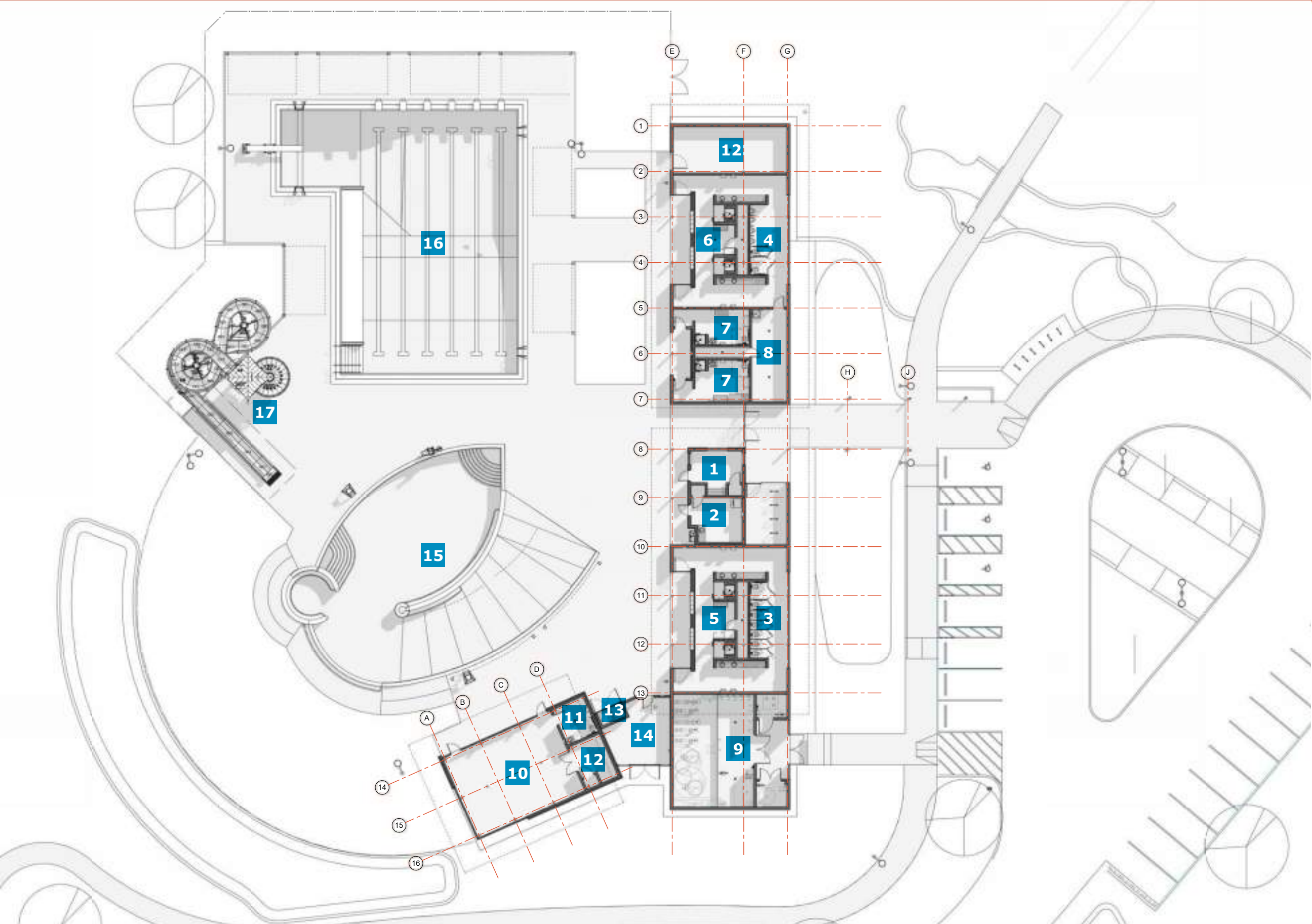
COA POOLS - COLONY PARK SITE PLAN

Austin, Texas



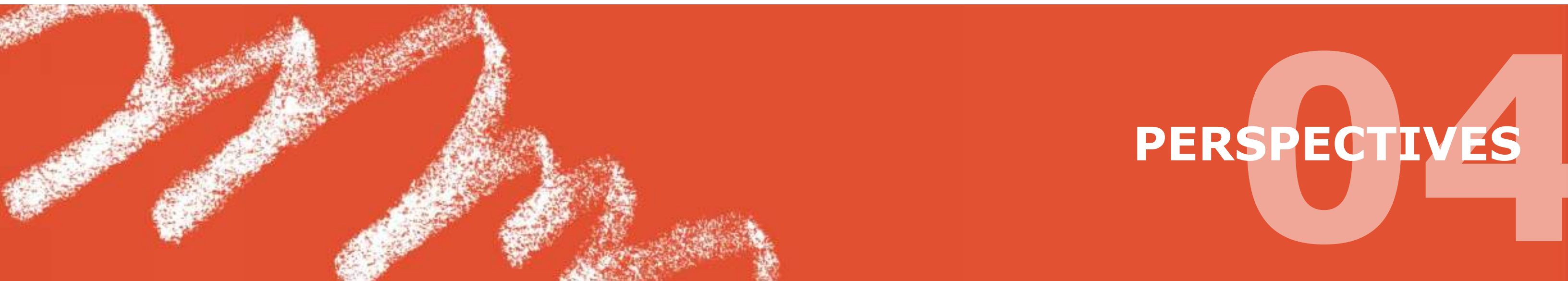


# FLOOR PLANS



1ST FLOOR PLAN

- 1 LIFEGUARD OFFICE
- 2 FIRST-AID ROOM
- 3 WOMEN'S RESTROOM
- 4 MEN'S RESTROOM
- 5 WOMEN'S SHOWERS
- 6 MEN'S SHOWERS
- 7 UNIVERSAL CHANGING ROOM
- 8 CUSTODIAL
- 9 POOL MECHANICAL
- 10 MULTI-PURPOSE ROOM
- 11 SINGLE OCCUPANT RESTROOM
- 12 STORAGE
- 13 VENDING
- 14 MECHANICAL YARD
- 15 LEISURE POOL
- 16 LAP POOL
- 17 WATER SLIDE WITH RUN-OUT



# PERSPECTIVES

# 04



MarmonMok  
ARCHITECTURE



MarmonMok  
ARCHITECTURE









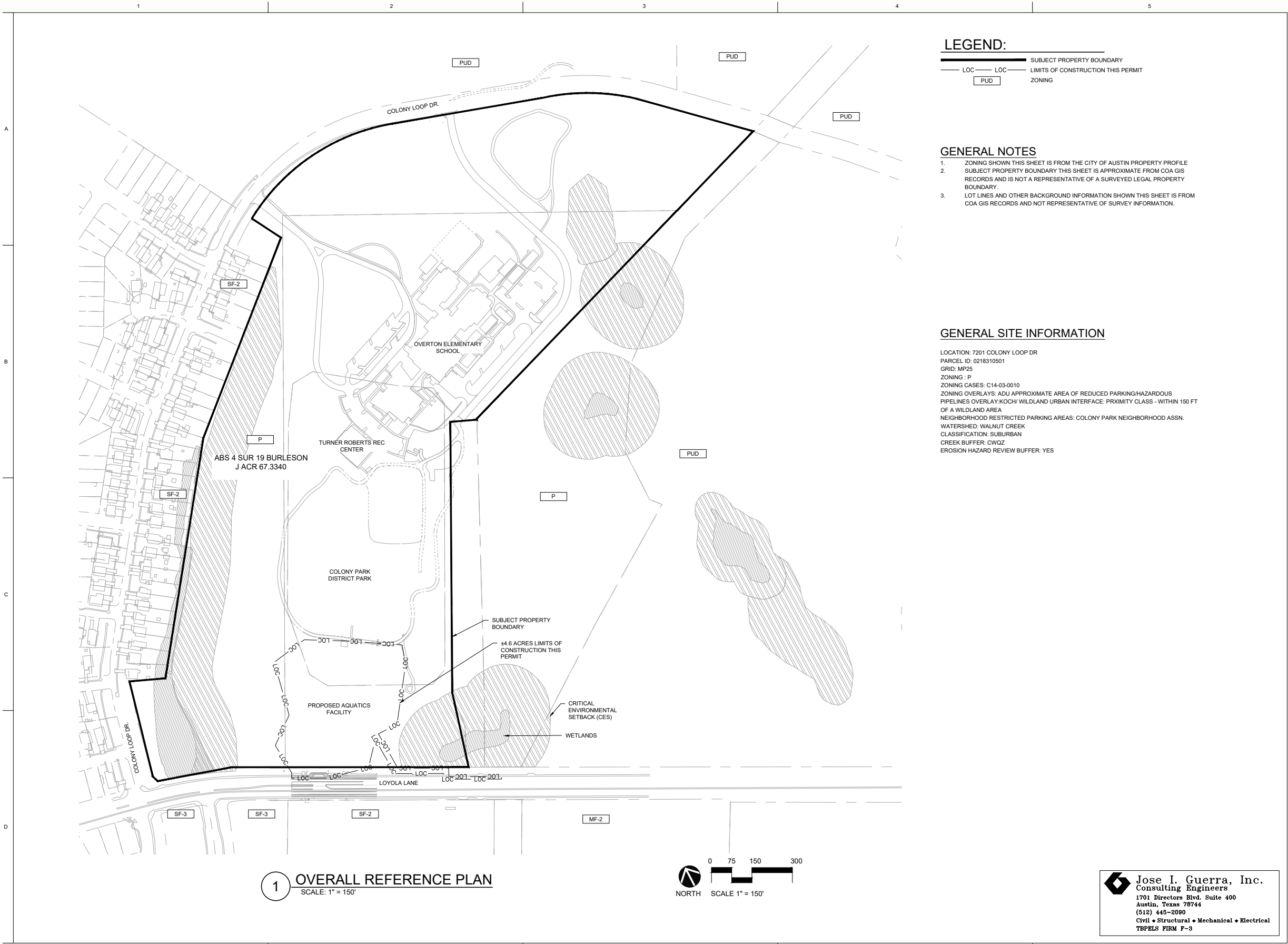












60% CONSTRUCTION DOCUMENTS  
THESE DOCUMENTS ARE FOR INFORMATION ONLY. THEY ARE NOT TO BE USED FOR REGULATORY APPROVAL, PERMITTING OR CONSTRUCTION. CLIENT: TX 100, NO. 123856

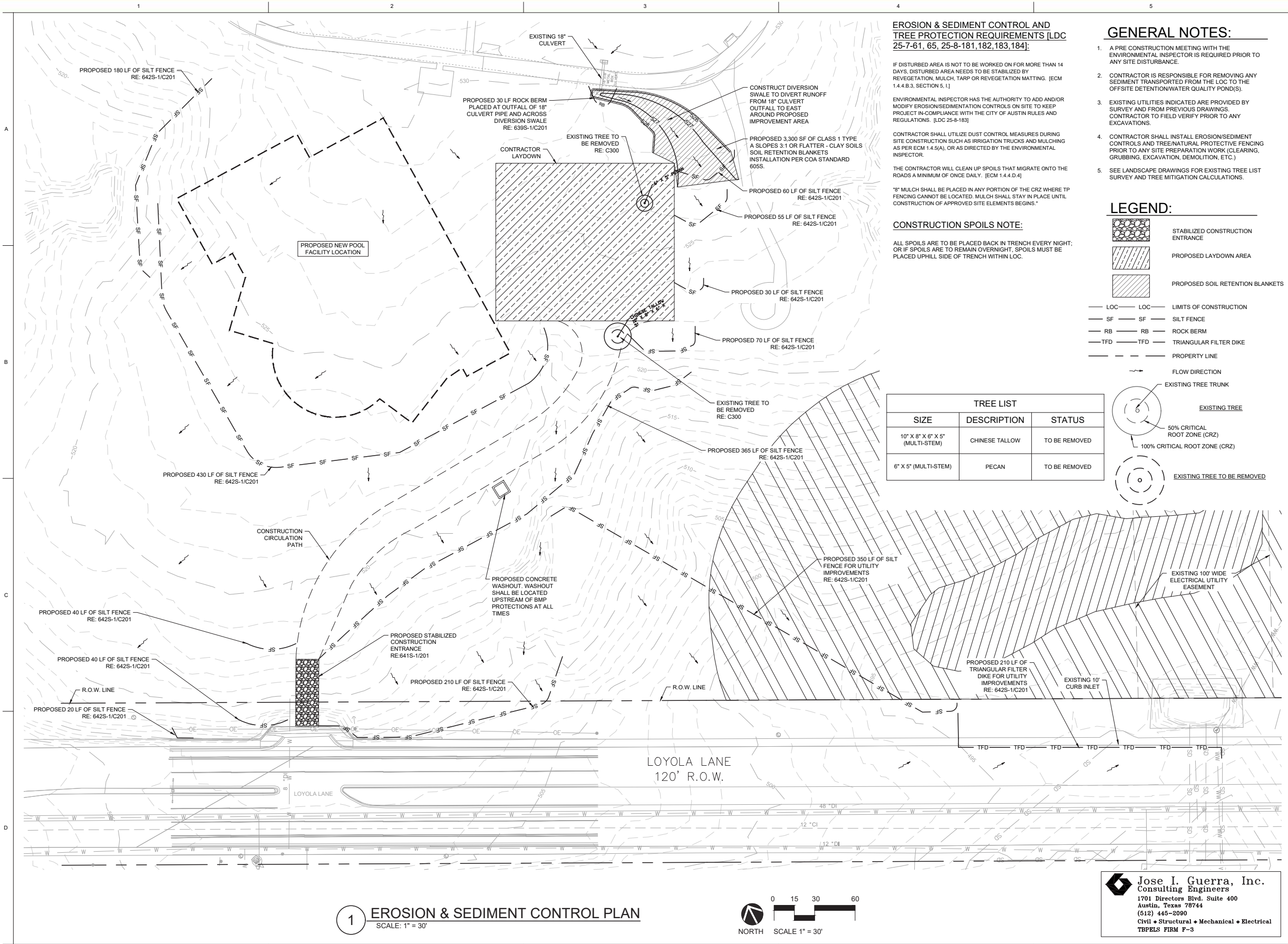
NEW AQUATICS FACILITY  
COLONY PARK DISTRICT PARK  
7201 COLONY LOOP DR., AUSTIN, TX 78724

© 2021 Marmon Mok, LLP  
Unauthorized reproduction is prohibited.  
Drawn PM  
Checked GF  
Date 11/05/2021  
Project No. 20031  
Revisions

SHEET TITLE  
OVERALL REFERENCE PLAN

SHEET NO.

C101



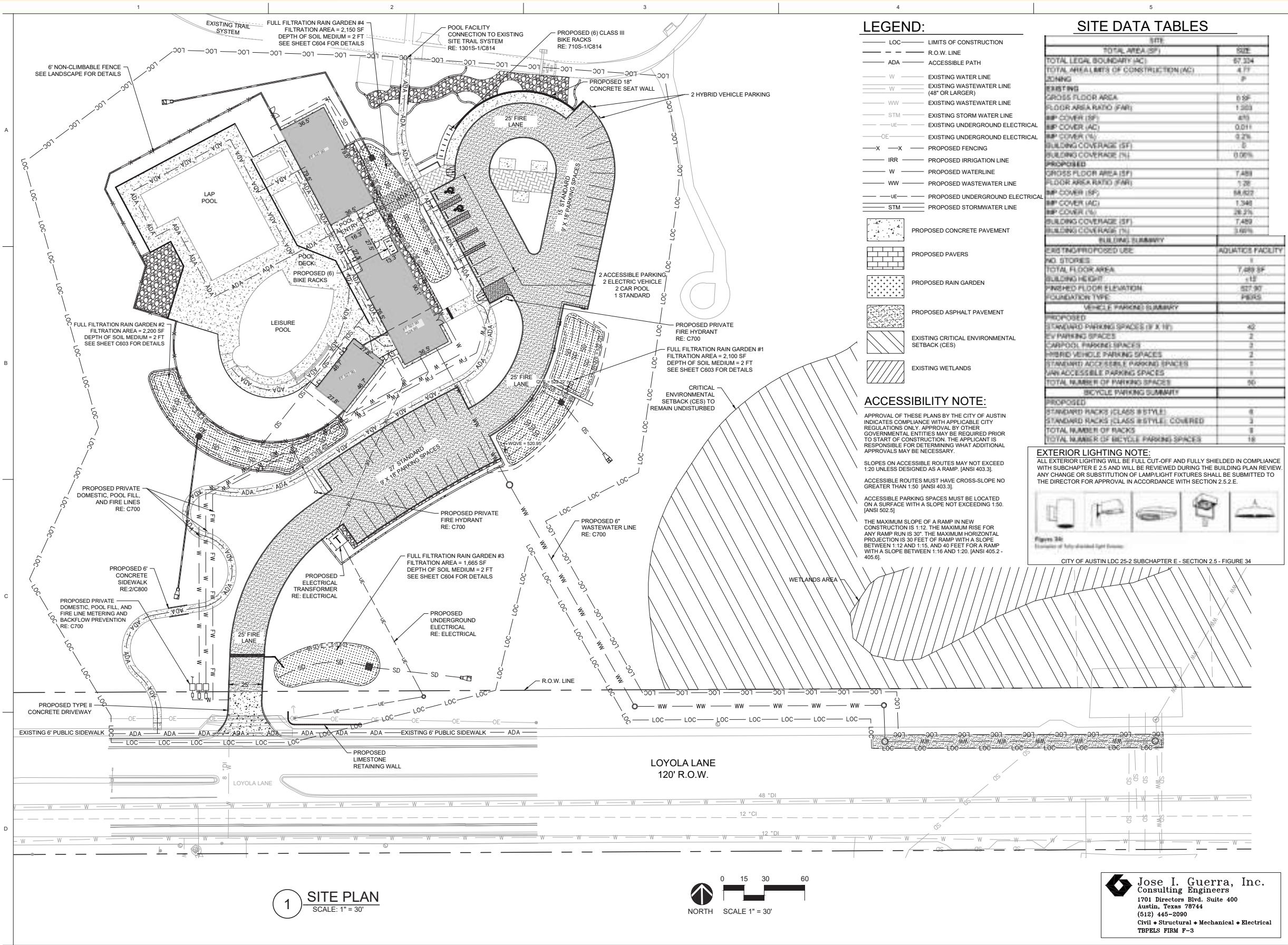
60% CONSTRUCTION DOCUMENTS  
THESE DOCUMENTS ARE NOT FOR REGULATORY APPROVAL, PERMITTING, OR CONSTRUCTION. THEY ARE INTENDED FOR REVIEW ONLY. THEY ARE NOT TO BE USED FOR REGULATORY APPROVAL, PERMITTING, OR CONSTRUCTION. CLIENT: TX 100, NO. 123858

NEW AQUATICS FACILITY  
COLONY PARK DISTRICT PARK  
7201 COLONY LOOP DR., AUSTIN, TX 78724

© 2021 Marmon Mok, LLP  
Unauthorized reproduction is prohibited.  
Drawn PM  
Checked GF  
Date 11/05/2021  
Project No. 20031  
Revisions

SHEET TITLE  
EROSION & SEDIMENT CONTROL PLAN

SHEET NO.  
C200



60% CONSTRUCTION DOCUMENTS

THESE DOCUMENTS ARE PRELIMINARY AND NOT TO BE USED FOR REGULATORY APPROVAL, PERMITTING OR CONSTRUCTION. GLEN TRAVIS NO. 123856

NEW AQUATICS FACILITY  
COLONY PARK DISTRICT PARK  
7201 COLONY LOOP DR., AUSTIN, TX 78724

© 2021 Marmon Mok, LLP  
Unauthorized reproduction is prohibited.  
Drawn PM  
Checked GF  
Date 11/05/2021  
Project No. 20031  
Revisions

SHEET TITLE  
SITE PLAN

SHEET NO.

C400

**Jose I. Guerra, Inc.**  
Consulting Engineers  
1701 Directors Blvd. Suite 400  
Austin, Texas 78744  
(512) 445-2090  
Civil • Structural • Mechanical • Electrical  
TBPELS FIRM F-3



**60% CONSTRUCTION DOCUMENTS**

THESE DOCUMENTS ARE INCOMPLETE AND FOR INTERIM REVIEW ONLY. THEY ARE NOT TO BE USED FOR REGULATORY APPROVAL, PERMITTING OR CONSTRUCTION.

GLENN FREY, P.E. REGISTRATION NO. 123856

**NEW AQUATICS FACILITY**  
**COLONY PARK DISTRICT PARK**  
7201 COLONY LOOP DR., AUSTIN, TX 78724

2021 Marmon Mok, LLP  
Unauthorized reproduction  
is prohibited.

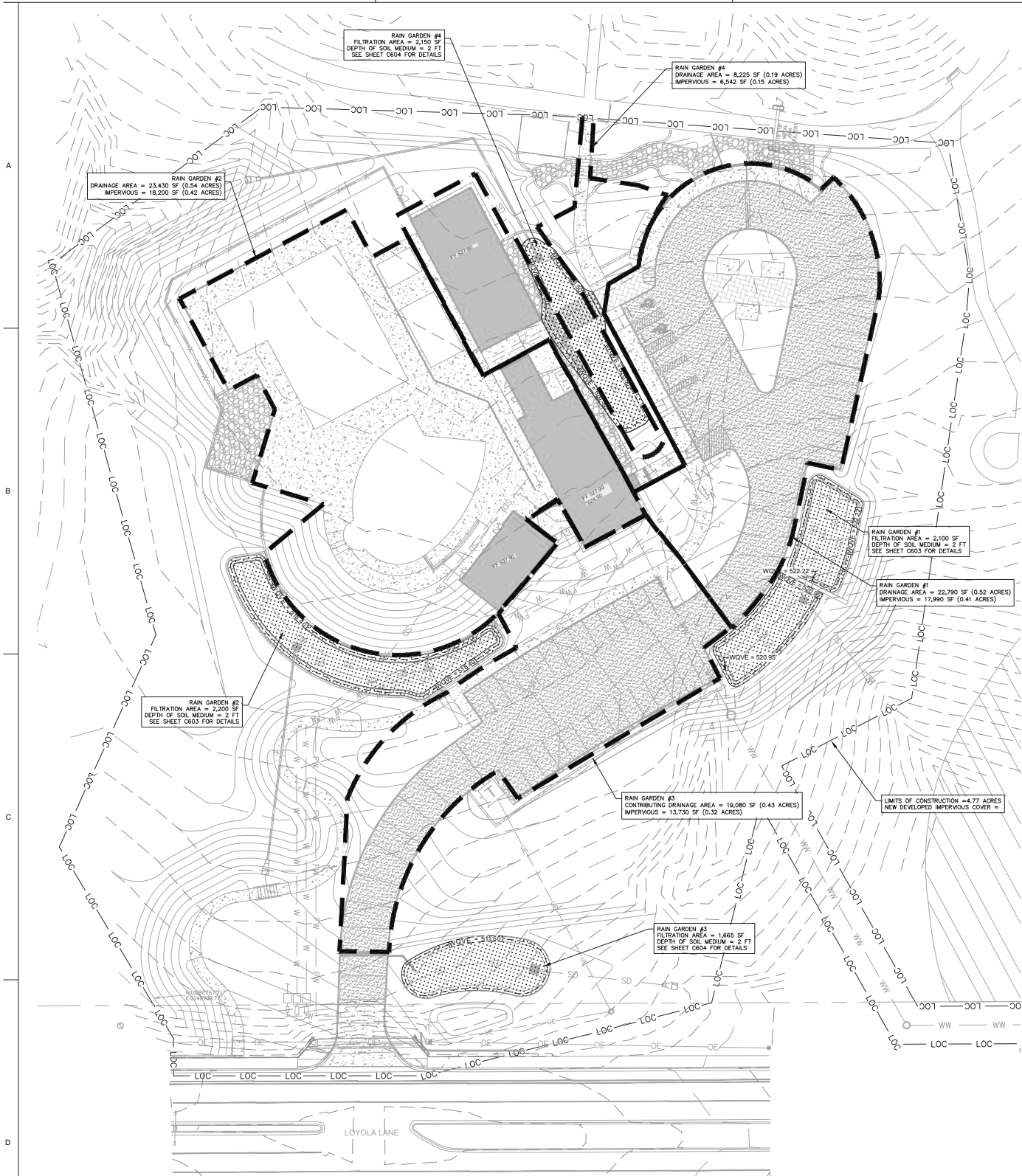
Drawn	PM
Checked	GF
Date	11/05/2021
Project No.	20031
Revisions	

MEET TITLE  
TRADING AND  
RAINAGE  
REFERENCE PLAN

SHEET NO.

C500

 **Jose I. Guerra, Inc.**  
Consulting Engineers  
1701 Directors Blvd. Suite 400  
Austin, Texas 78744  
(512) 445-2090  
Civil ♦ Structural ♦ Mechanical ♦ Electrical  
TBPELS FIRM F-3



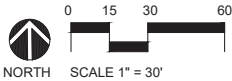
**TOTAL REQUIRED SITE WQV TREATMENT SUMMARY**

WQV AREA (SQ FT)	4,77	ACRES
WQV IMPERVIOUS COVER (TOTAL IMPERVIOUS COVER)	1.38	ACRES
WQV IMPERVIOUS COVER (TOTAL IMPERVIOUS COVER)	279	
CAPTURE DEPTH	0.30	FT
TOTAL SITE WQV REQUIRED WITH CAPTURE DEPTH	9.86	ACRES

**RAIN GARDEN WATER QUALITY TREATMENT SUMMARY**

RAIN GARDEN NO.	CONTRIBUTING DRAINAGE AREA TO RAIN GARDEN	IMPERVIOUS COVER IN CONTRIBUTING DRAINAGE AREA	CAPTURE DEPTH	REQUIRED WATER QUALITY VOLUME	DEPTH OF SWALE	POSSIBLE DEPTH	REQUIRED FILTRATION AREA	PROVIDED FILTRATION AREA	PROVIDED WATER QUALITY TREATMENT VOLUME
1	11,792	0.51	17,890	0.41	0.30	1.00	1,000	1,000	1,000
2	23,430	0.54	10,200	0.42	0.30	1.00	2,100	2,100	2,100
3	20,000	0.44	11,700	0.30	0.30	1.00	1,100	1,100	1,100
4	6,225	0.29	6,642	0.22	0.30	1.00	751	751	751
5	2,100	0.05	2,100	0.05	0.30	1.00	210	210	210
TOTAL							5,261	5,261	5,261

1 OVERALL STORMWATER MANAGEMENT PLAN  
SCALE: 1" = 30'



**Jose I. Guerra, Inc.**  
Consulting Engineers  
1701 Directors Blvd. Suite 400  
Austin, Texas 78744  
(512) 445-2090  
Civil • Structural • Mechanical • Electrical  
TBPELS FIRM F-3



**60% CONSTRUCTION DOCUMENTS**  
THESE DOCUMENTS ARE FOR INFORMATION ONLY. THEY ARE NOT TO BE USED FOR REGULATORY APPROVAL, PERMITTING OR CONSTRUCTION. CLIENT PROJECT NO. 13856

**NEW AQUATICS FACILITY  
COLONY PARK DISTRICT PARK  
7201 COLONY LOOP DR., AUSTIN, TX 78724**

© 2021 Marmon Mok, LLP  
Unauthorized reproduction is prohibited.  
Drawn PM  
Checked GF  
Date 11/05/2021  
Project No. 20031  
Revisions

SHEET TITLE  
**OVERALL  
STORMWATER  
MANAGEMENT PLAN**

SHEET NO.  
**C602**



**60% CONSTRUCTION DOCUMENTS**

THESE DOCUMENTS ARE  
INCOMPLETE AND FOR INTERIM  
REVIEW ONLY. THEY ARE NOT TO BE  
USED FOR REGULATORY APPROVAL,  
PERMITTING OR CONSTRUCTION.  
GLENN FREY, P.E. REGISTRATION

**NEW AQUATICS FACILITY  
COLONY PARK DISTRICT PARK  
7201 COLONY LOOP DR., AUSTIN, TX 78724**

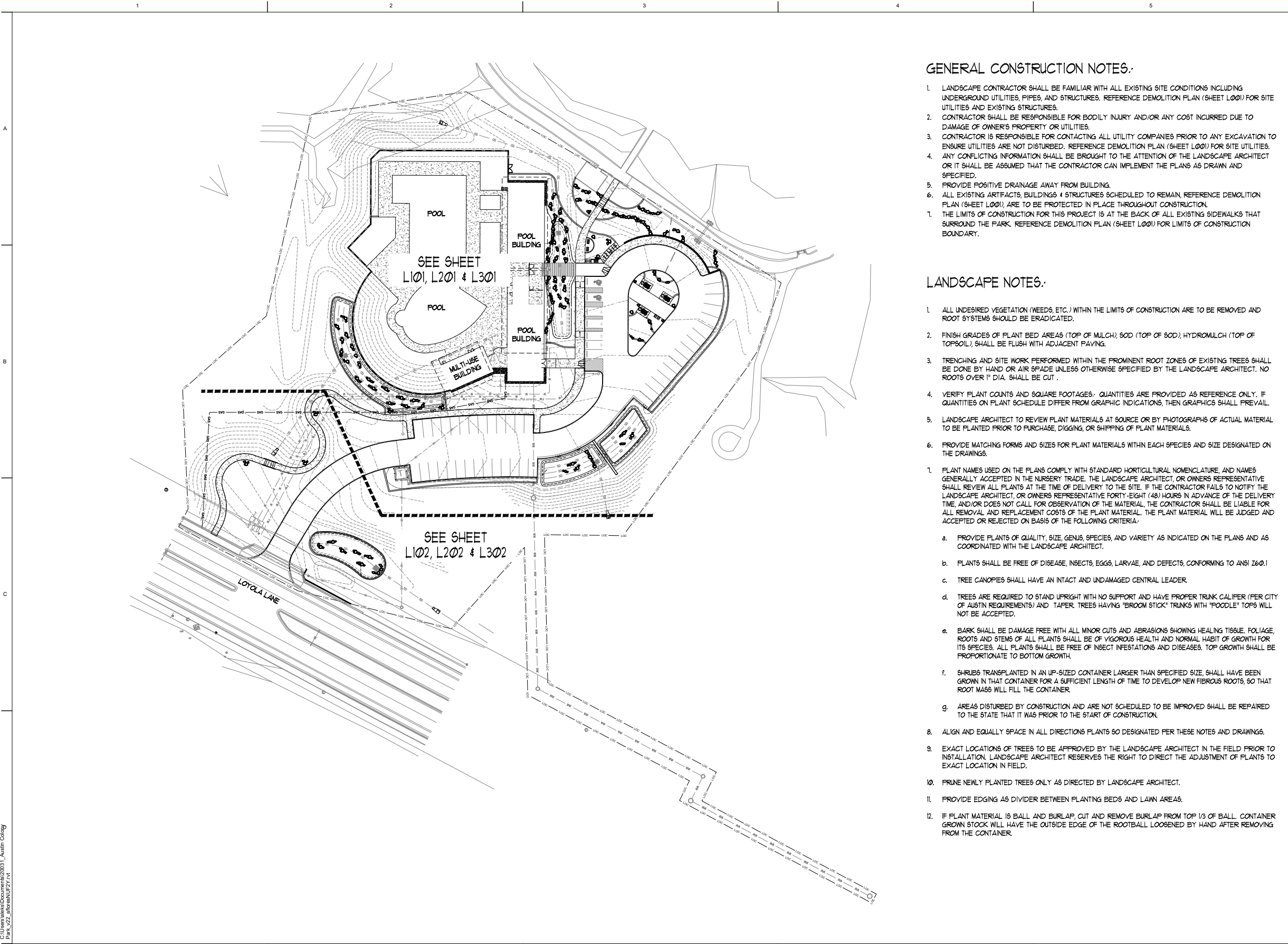
© 2021 Marmon Mok, LLP  
Unauthorized reproduction  
is prohibited.

Drawn	PM
Checked	GF
Date	11/05/2021
Project No.	20031
Revisions	

SHEET TITLE  
OVERALL UTILITY PLAN

SHEET NO. \_\_\_\_\_

# C700



GENERAL CONSTRUCTION NOTES:

- 1. LANDSCAPE CONTRACTOR SHALL BE FAMILIAR WITH ALL EXISTING SITE CONDITIONS INCLUDING UNDERGROUND UTILITIES, PIPES, AND STRUCTURES. REFERENCE DEMOLITION PLAN (SHEET L000) FOR SITE UTILITIES AND EXISTING STRUCTURES.
- 2. CONTRACTOR SHALL BE RESPONSIBLE FOR BODILY INJURY AND/OR ANY COST INCURRED DUE TO DAMAGE OF OWNER'S PROPERTY OR UTILITIES.
- 3. CONTRACTOR IS RESPONSIBLE FOR CONTACTING ALL UTILITY COMPANIES PRIOR TO ANY EXCAVATION TO ENSURE UTILITIES ARE NOT DISTURBED. REFERENCE DEMOLITION PLAN (SHEET L000) FOR SITE UTILITIES.
- 4. ANY CONFLICTING INFORMATION SHALL BE BROUGHT TO THE ATTENTION OF THE LANDSCAPE ARCHITECT OR IT SHALL BE ASSUMED THAT THE CONTRACTOR CAN IMPLEMENT THE PLANS AS DRAWN AND SPECIFIED.
- 5. PROVIDE POSITIVE DRAINAGE AWAY FROM BUILDING.
- 6. ALL EXISTING ARTIFACTS, BUILDINGS & STRUCTURES SCHEDULED TO REMAIN, REFERENCE DEMOLITION PLAN (SHEET L000), ARE TO BE PROTECTED IN PLACE THROUGHOUT CONSTRUCTION.
- 7. THE LIMITS OF CONSTRUCTION FOR THIS PROJECT IS AT THE BACK OF ALL EXISTING SIDEWALKS THAT SURROUND THE PARK. REFERENCE DEMOLITION PLAN (SHEET L000) FOR LIMITS OF CONSTRUCTION BOUNDARY.

LANDSCAPE NOTES:

- 1. ALL UNDESIRABLE VEGETATION (WEEDS, ETC.) WITHIN THE LIMITS OF CONSTRUCTION ARE TO BE REMOVED AND ROOT SYSTEMS SHOULD BE ERADICATED.
- 2. FINISH GRADES OF PLANT BED AREAS (TOP OF MULCH), SOD (TOP OF SOD), HYDROMULCH (TOP OF TOPSOIL), SHALL BE FLUSH WITH ADJACENT PAVING.
- 3. TRENCING AND SITE WORK PERFORMED WITHIN THE PROMINENT ROOT ZONES OF EXISTING TREES SHALL BE DONE BY HAND OR AIR SPADE UNLESS OTHERWISE SPECIFIED BY THE LANDSCAPE ARCHITECT. NO ROOTS OVER 1" DIA. SHALL BE CUT.
- 4. VERIFY PLANT COUNTS AND SQUARE FOOTAGES. QUANTITIES ARE PROVIDED AS REFERENCE ONLY. IF QUANTITIES ON PLANT SCHEDULE DIFFER FROM GRAPHIC INDICATIONS, THEN GRAPHICS SHALL PREVAIL.
- 5. LANDSCAPE ARCHITECT TO REVIEW PLANT MATERIALS AT SOURCE OR BY PHOTOGRAPHS OF ACTUAL MATERIAL TO BE PLANTED PRIOR TO PURCHASE, DIGGING, OR SHIPPING OF PLANT MATERIALS.
- 6. PROVIDE MATCHING FORMS AND SIZES FOR PLANT MATERIALS WITHIN EACH SPECIES AND SIZE DESIGNATED ON THE DRAWINGS.
- 7. PLANT NAMES USED ON THE PLANS COMPLY WITH STANDARD HORTICULTURAL NOMENCLATURE, AND NAMES GENERALLY ACCEPTED IN THE NURSERY TRADE. THE LANDSCAPE ARCHITECT OR OWNERS REPRESENTATIVE SHALL REVIEW ALL PLANTS AT THE TIME OF DELIVERY TO THE SITE. IF THE CONTRACTOR FAILS TO NOTIFY THE LANDSCAPE ARCHITECT, OR OWNERS REPRESENTATIVE FORTY-EIGHT (48) HOURS IN ADVANCE OF THE DELIVERY TIME, AND/OR DOES NOT CALL FOR OBSERVATION OF THE MATERIAL, THE CONTRACTOR SHALL BE LIABLE FOR ALL REMOVAL AND REPLACEMENT COSTS OF THE PLANT MATERIAL. THE PLANT MATERIAL WILL BE JUDGED AND ACCEPTED OR REJECTED ON BASIS OF THE FOLLOWING CRITERIA:
  - a. PROVIDE PLANTS OF QUALITY, SIZE, GENUS, SPECIES, AND VARIETY AS INDICATED ON THE PLANS AND AS COORDINATED WITH THE LANDSCAPE ARCHITECT.
  - b. PLANTS SHALL BE FREE OF DISEASE, INSECTS, EGGS, LARVAE, AND DEFECTS, CONFORMING TO ANSI Z60.1
  - c. TREE CANOPIES SHALL HAVE AN INTACT AND UNDAMAGED CENTRAL LEADER.
  - d. TREES ARE REQUIRED TO STAND UPRIGHT WITH NO SUPPORT AND HAVE PROPER TRUNK CALIPER (PER CITY OF AUSTIN REQUIREMENTS) AND TAPER. TREES HAVING "BROOM STICK" TRUNKS WITH "FOODLE" TOPS WILL NOT BE ACCEPTED.
  - e. BARK SHALL BE DAMAGE FREE WITH ALL MINOR CUTS AND ABRASIONS SHOWING HEALING TISSUE. FOLIAGE, ROOTS AND STEMS OF ALL PLANTS SHALL BE OF VIGOROUS HEALTH AND NORMAL HABIT OF GROWTH FOR ITS SPECIES. ALL PLANTS SHALL BE FREE OF INSECT INFESTATIONS AND DISEASES. TOP GROWTH SHALL BE PROPORTIONATE TO BOTTOM GROWTH.
  - f. SHRUBS TRANSPLANTED IN AN UP-SIZED CONTAINER LARGER THAN SPECIFIED SIZE, SHALL HAVE BEEN GROWN IN THAT CONTAINER FOR A SUFFICIENT LENGTH OF TIME TO DEVELOP NEW FIBROUS ROOTS, SO THAT ROOT MASS WILL FILL THE CONTAINER.
  - g. AREAS DISTURBED BY CONSTRUCTION AND ARE NOT SCHEDULED TO BE IMPROVED SHALL BE REPAIRED TO THE STATE THAT IT WAS PRIOR TO THE START OF CONSTRUCTION.
- 8. ALIGN AND EQUALLY SPACE IN ALL DIRECTIONS PLANTS SO DESIGNATED PER THESE NOTES AND DRAWINGS.
- 9. EXACT LOCATIONS OF TREES TO BE APPROVED BY THE LANDSCAPE ARCHITECT IN THE FIELD PRIOR TO INSTALLATION. LANDSCAPE ARCHITECT RESERVES THE RIGHT TO DIRECT THE ADJUSTMENT OF PLANTS TO EXACT LOCATION IN FIELD.
- 10. PRUNE NEWLY PLANTED TREES ONLY AS DIRECTED BY LANDSCAPE ARCHITECT.
- 11. PROVIDE EDGING AS DIVIDER BETWEEN PLANTING BEDS AND LAWN AREAS.
- 12. IF PLANT MATERIAL IS BALL AND BURLAP, CUT AND REMOVE BURLAP FROM TOP 1/3 OF BALL. CONTAINER GROWN STOCK WILL HAVE THE OUTSIDE EDGE OF THE ROOTBALL LOOSENED BY HAND AFTER REMOVING FROM THE CONTAINER.



60%  
CONSTRUCTION  
DOCUMENTS  
NOT FOR REGULATORY APPROVAL  
PERMITTING OR CONSTRUCTION  
LANDSCAPE ARCHITECT  
REGISTRATION NO. 974  
11/18/2021

NEW AQUATIC FACILITY  
COLONY PARK DISTRICT PARK  
7201 COLONY LOOP DR., AUSTIN, TX 78724

© 2021 Marmon Mok, LLP.  
Unauthorized reproduction  
is prohibited.  
Drawn JAP  
Checked MAM  
Date 11/18/2021  
Project No. 20031  
Revisions

SHEET TITLE  
OVERALL PLAN

SHEET NO.  
L100

8/13/2021 1:25:52 PM  
C:\Users\jap\Documents\20031\_Austin Colony  
Park\_LP\_SitePlan.dwg



**60%  
CONSTRUCTION  
DOCUMENTS**

NOT FOR REGULATORY APPROVAL,  
PERMITTING OR CONSTRUCTION

LANDSCAPE ARCHITECT  
REGISTRATION NO. 974

**11/18/2021**

**NEW AQUATIC FACILITY  
COLONY PARK DISTRICT PARK  
7201 COLONY LOOP DR., AUSTIN, TX 78724**

© 2021 Marmon Mok, LLP  
Unauthorized reproduction  
is prohibited.

Drawn	JAP
Checked	MAM
Date	11/18/2021
Project No.	20031
Revisions	

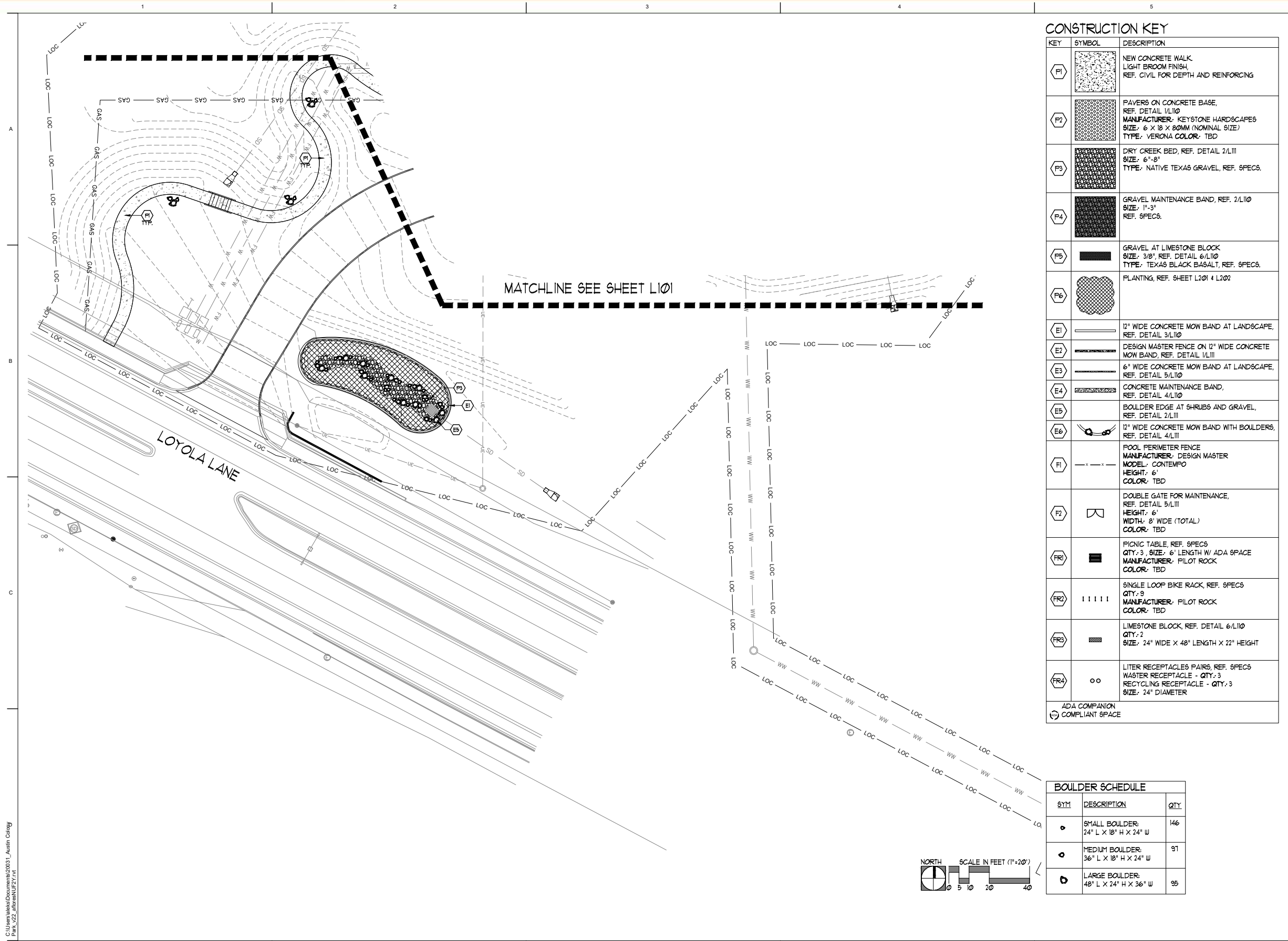
SHEET TITLE  
HARDSCAPE +  
MATERIALS PLAN

SHEET NO.  
**L101**

CONSTRUCTION KEY		
KEY	SYMBOL	DESCRIPTION
P1		NEW CONCRETE WALK LIGHT BROOM FINISH, REF. CIVIL FOR DEPTH AND REINFORCING
P2		PAVERS ON CONCRETE BASE, REF. DETAIL 1/L110 MANUFACTURER: KEYSTONE HARDSCAPES SIZE: 6" X 18" X 80MM (NOMINAL SIZE) TYPE: VERONA COLOR: TBD
P3		DRY CREEK BED, REF. DETAIL 2/L111 SIZE: 6"-8" TYPE: NATIVE TEXAS GRAVEL, REF. SPECS.
P4		GRAVEL MAINTENANCE BAND, REF. 2/L110 SIZE: 1"-3" REF. SPECS.
P5		GRAVEL AT LIMESTONE BLOCK SIZE: 3/8", REF. DETAIL 6/L110 TYPE: TEXAS BLACK BASALT, REF. SPECS.
P6		PLANTING, REF. SHEET L201 & L202
E1		12" WIDE CONCRETE MOW BAND AT LANDSCAPE, REF. DETAIL 3/L110
E2		DESIGN MASTER FENCE ON 12" WIDE CONCRETE MOW BAND, REF. DETAIL 1/L111
E3		6" WIDE CONCRETE MOW BAND AT LANDSCAPE, REF. DETAIL 5/L110
E4		CONCRETE MAINTENANCE BAND, REF. DETAIL 4/L110
E5		BOULDER EDGE AT SHRUBS AND GRAVEL, REF. DETAIL 2/L111
E6		12" WIDE CONCRETE MOW BAND WITH BOULDERS, REF. DETAIL 4/L111
F1		POOL PERIMETER FENCE MANUFACTURER: DESIGN MASTER MODEL: CONTEMPO HEIGHT: 6' COLOR: TBD
F2		DOUBLE GATE FOR MAINTENANCE, REF. DETAIL 5/L111 HEIGHT: 6' WIDTH: 8' WIDE (TOTAL) COLOR: TBD
FR1		PICNIC TABLE, REF. SPECS QTY.: 3, SIZE: 6' LENGTH W/ ADA SPACE MANUFACTURER: PILOT ROCK COLOR: TBD
FR2		SINGLE LOOP BIKE RACK, REF. SPECS QTY.: 9 MANUFACTURER: PILOT ROCK COLOR: TBD
FR3		LIMESTONE BLOCK, REF. DETAIL 6/L110 QTY.: 2 SIZE: 24" WIDE X 48" LENGTH X 22" HEIGHT
FR4		LITTER RECEPTACLES PAIRS, REF. SPECS WASTER RECEPTACLE - QTY.: 3 RECYCLING RECEPTACLE - QTY.: 3 SIZE: 24" DIAMETER

ADA COMPANION  
COMPLIANT SPACE

BOULDER SCHEDULE		
SYM	DESCRIPTION	QTY
○	SMALL BOULDER: 24" L x 18" H x 24" W	146
○	MEDIUM BOULDER: 36" L x 18" H x 24" W	91
○	LARGE BOULDER: 48" L x 24" H x 36" W	95



CONSTRUCTION KEY		
KEY	SYMBOL	DESCRIPTION
P1		NEW CONCRETE WALK, LIGHT BROOM FINISH, REF. CIVIL FOR DEPTH AND REINFORCING
P2		PAVERS ON CONCRETE BASE, REF. DETAIL 1/L110 MANUFACTURER: KEYSTONE HARDSCAPES SIZE: 6" X 18" X 80MM (NOMINAL SIZE) TYPE: VERONA COLOR: TBD
P3		DRY CREEK BED, REF. DETAIL 2/L111 SIZE: 6"-8" TYPE: NATIVE TEXAS GRAVEL, REF. SPECS.
P4		GRAVEL MAINTENANCE BAND, REF. 2/L110 SIZE: 1'-3" REF. SPECS.
P5		GRAVEL AT LIMESTONE BLOCK SIZE: 3/8", REF. DETAIL 6/L110 TYPE: TEXAS BLACK BASALT, REF. SPECS.
P6		PLANTING, REF. SHEET L201 & L202
E1		12" WIDE CONCRETE MOW BAND AT LANDSCAPE, REF. DETAIL 3/L110
E2		DESIGN MASTER FENCE ON 12" WIDE CONCRETE MOW BAND, REF. DETAIL 1/L111
E3		6" WIDE CONCRETE MOW BAND AT LANDSCAPE, REF. DETAIL 5/L110
E4		CONCRETE MAINTENANCE BAND, REF. DETAIL 4/L110
E5		BOULDER EDGE AT SHRUBS AND GRAVEL, REF. DETAIL 2/L111
E6		12" WIDE CONCRETE MOW BAND WITH BOULDERS, REF. DETAIL 4/L111
F1		POOL PERIMETER FENCE MANUFACTURER: DESIGN MASTER MODEL: CONTEMPO HEIGHT: 6' COLOR: TBD
F2		DOUBLE GATE FOR MAINTENANCE, REF. DETAIL 5/L111 HEIGHT: 6' WIDTH: 8' WIDE (TOTAL) COLOR: TBD
FR1		PICNIC TABLE, REF. SPECS QTY: 3, SIZE: 6' LENGTH W/ ADA SPACE MANUFACTURER: PILOT ROCK COLOR: TBD
FR2		SINGLE LOOP BIKE RACK, REF. SPECS QTY: 9 MANUFACTURER: PILOT ROCK COLOR: TBD
FR3		LIMESTONE BLOCK, REF. DETAIL 6/L110 QTY: 2 SIZE: 24" WIDE X 48" LENGTH X 22" HEIGHT
FR4		LITER RECEPTABLES PAIRS, REF. SPECS WASTER RECEPTACLE - QTY: 3 RECYCLING RECEPTACLE - QTY: 3 SIZE: 24" DIAMETER
ADA COMPANION COMPLIANT SPACE		

BOULDER SCHEDULE		
SYM	DESCRIPTION	QTY
•	SMALL BOULDER: 24" L X 18" H X 24" W	146
•	MEDIUM BOULDER: 36" L X 18" H X 24" W	91
•	LARGE BOULDER: 48" L X 24" H X 36" W	95



60%  
CONSTRUCTION  
DOCUMENTS  
NOT FOR REGULATORY APPROVAL,  
PERMITTING OR CONSTRUCTION  
LANDSCAPE ARCHITECT  
REGISTRATION NO. 974  
11/18/2021

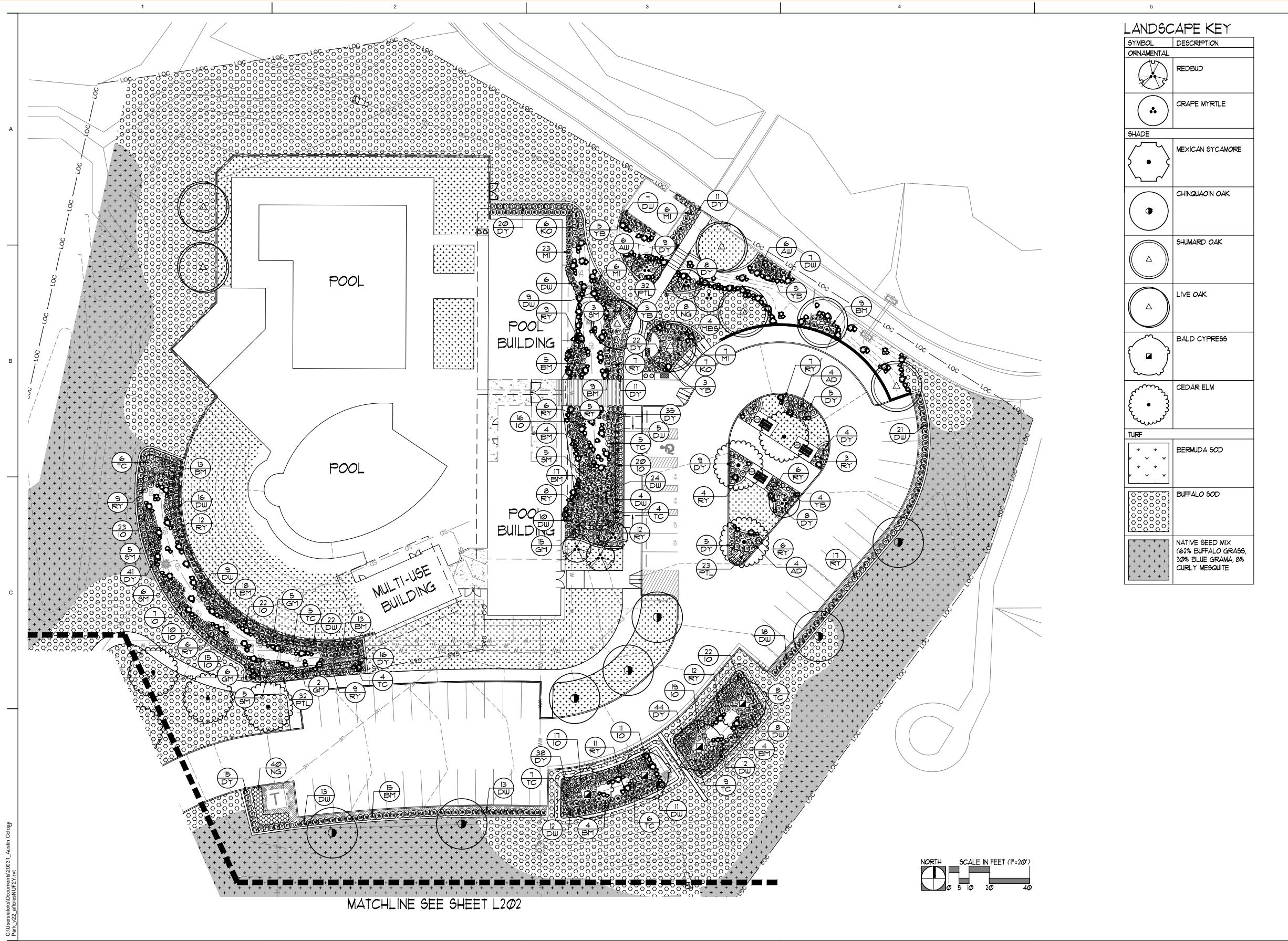
NEW AQUATIC FACILITY  
COLONY PARK DISTRICT PARK  
7201 COLONY LOOP DR., AUSTIN, TX 78724

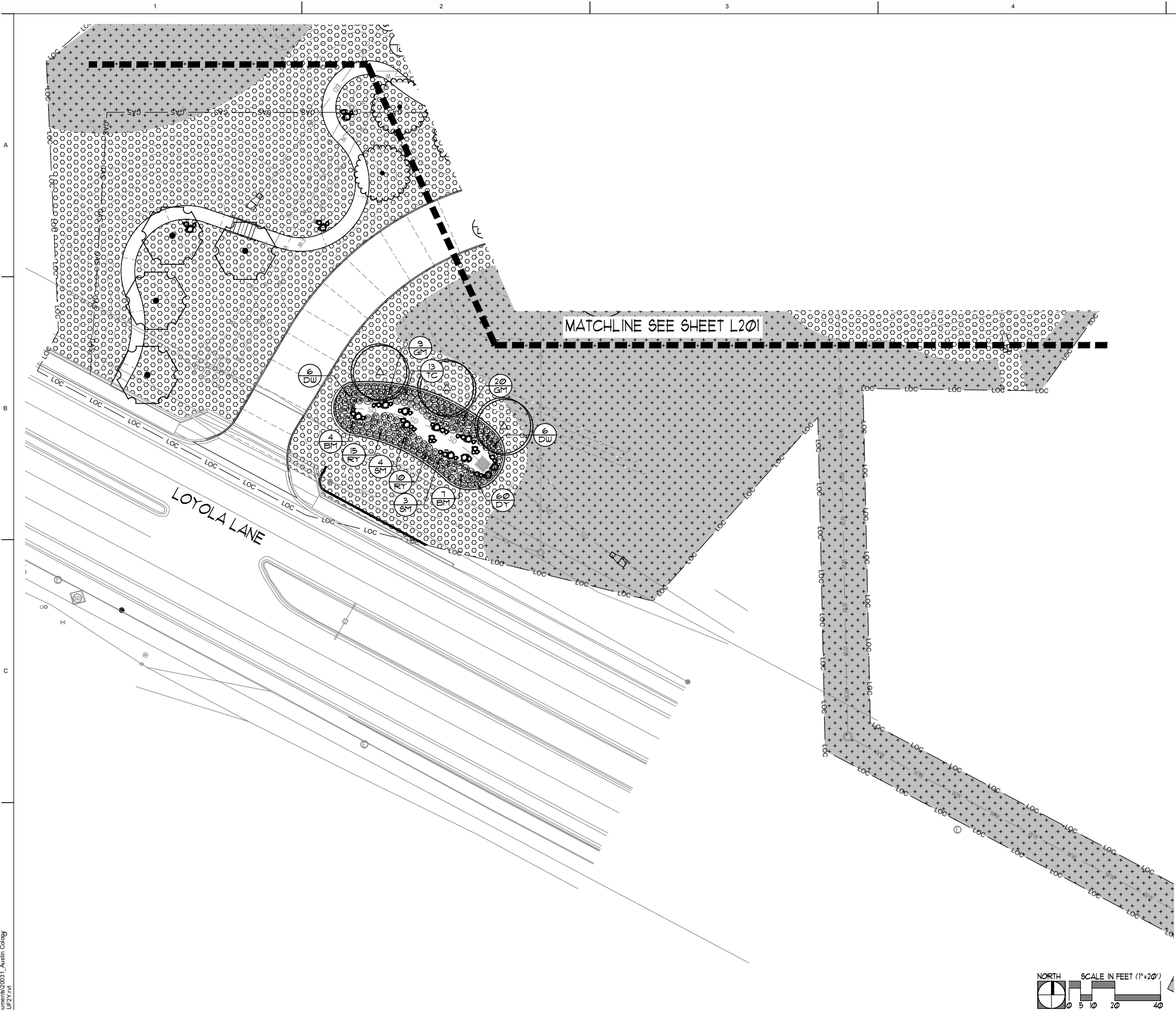
© 2021 Marmon Mok, LLP.  
Unauthorized reproduction  
is prohibited.  
Drawn JAP  
Checked MAM  
Date 11/18/2021  
Project No. 20031  
Revisions

SHEET TITLE  
HARDSCAPE +  
MATERIALS PLAN

SHEET NO.

L102





LANDSCAPE KEY	
SYMBOL	DESCRIPTION
ORNAMENTAL	
	REDBUD
	CRAPE MYRTLE
SHADE	
	MEXICAN SYCAMORE
	CHINQUAPIN OAK
	SHUMARD OAK
	LIVE OAK
	BALD CYPRESS
	CEDAR ELM
TURF	
	BERMUDA SOD
	BUFFALO SOD
	NATIVE SEED MIX (62% BUFFALO GRASS, 30% BLUE GRAMA, 8% CURLY MESQUITE)



60%  
CONSTRUCTION  
DOCUMENTS  
NOT FOR REGULATORY APPROVAL,  
PERMITTING OR CONSTRUCTION  
LANDSCAPE ARCHITECT  
REGISTRATION NO. 974  
11/18/2021

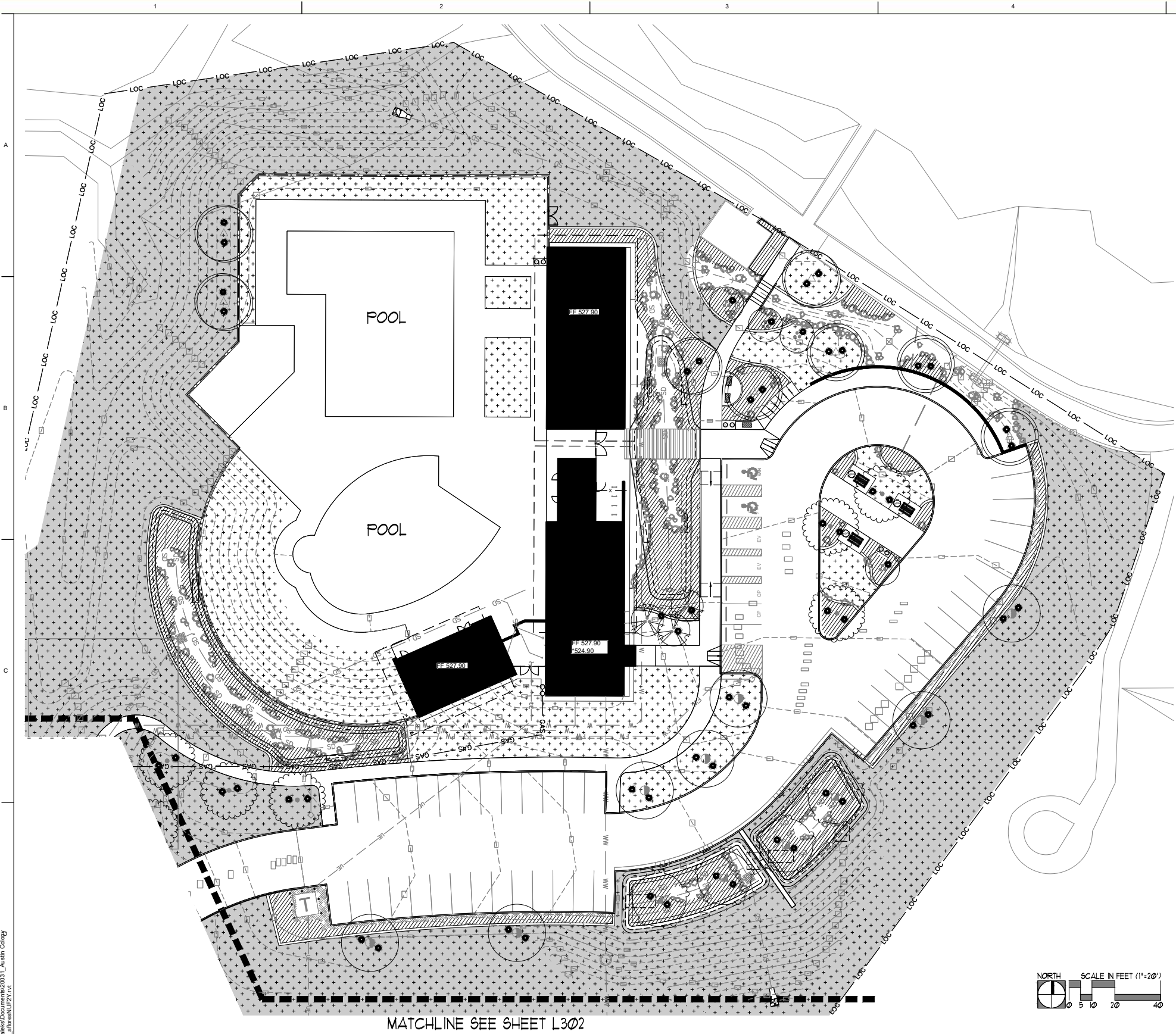
NEW AQUATIC FACILITY  
COLONY PARK DISTRICT PARK  
7201 COLONY LOOP DR., AUSTIN, TX 78724

© 2021 Marmon Mok, LLP.  
Unauthorized reproduction  
is prohibited.  
Drawn JAP  
Checked MAM  
Date 11/18/2021  
Project No. 20031  
Revisions

SHEET TITLE  
LANDSCAPE PLAN

SHEET NO.

L202



SYMBOL	DESCRIPTION
	DRIP IRRIGATION
	SPRAY IRRIGATION
	TEMPORARY SPRAY IRRIGATION
	TREE BUBBLER (2 PER SHADE TREE)



60%  
CONSTRUCTION  
DOCUMENTS

NOT FOR REGULATORY APPROVAL  
PERMITTING OR CONSTRUCTION  
LANDSCAPE ARCHITECT  
REGISTRATION NO. 974

11/05/2021

NEW AQUATIC FACILITY  
COLONY PARK DISTRICT PARK  
7201 COLONY LOOP DR., AUSTIN, TX 78724

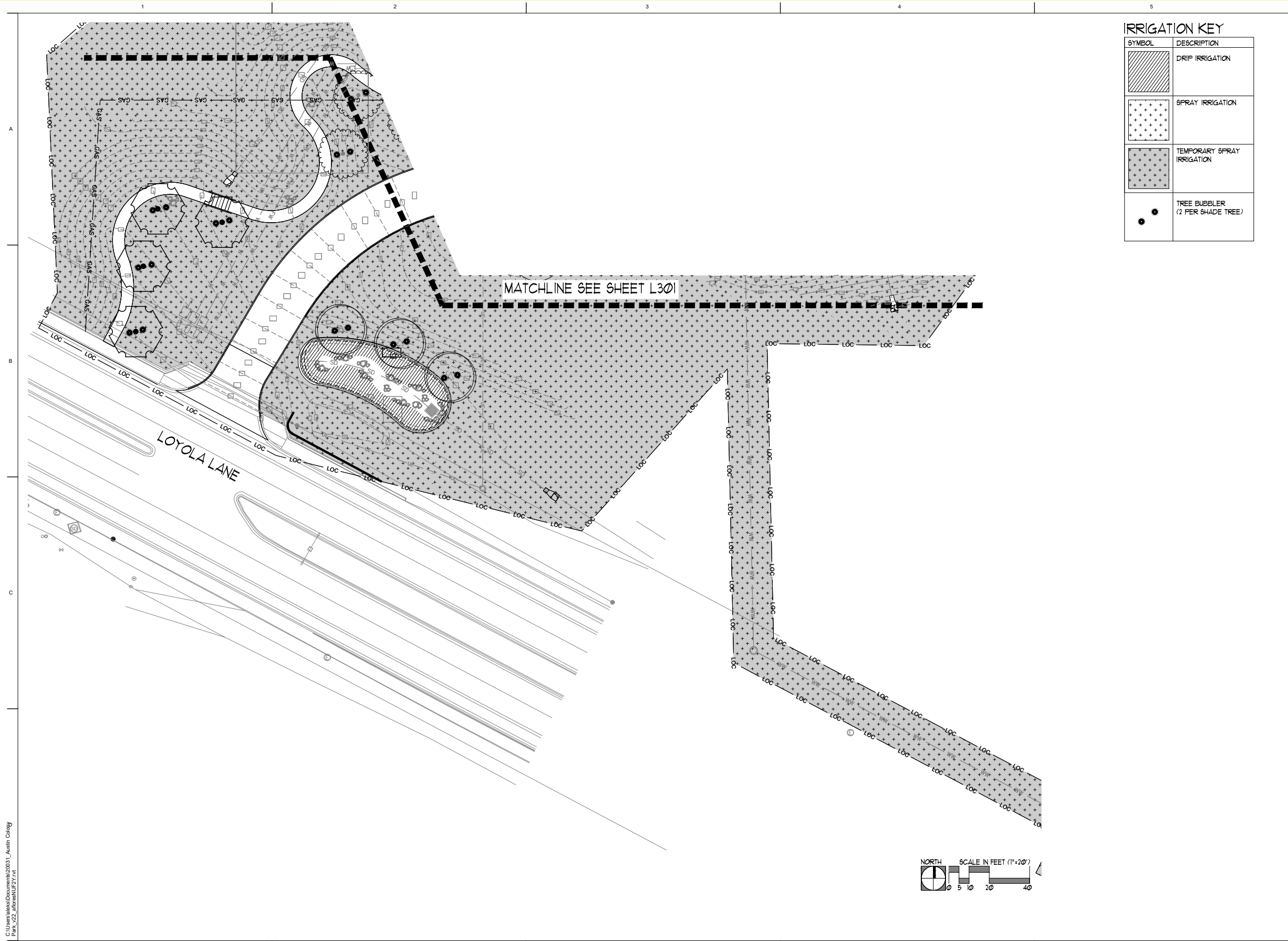
© 2021 Marmon Mok, LLP  
Unauthorized reproduction  
is prohibited.

Drawn JAP  
Checked MAM  
Date 11/18/2021  
Project No. 20031  
Revisions

SHEET TITLE  
IRRIGATION PLAN

SHEET NO.

L301



IRRIGATION KEY	
SYMBOL	DESCRIPTION
	DRIP IRRIGATION
	SPRAY IRRIGATION
	TEMPORARY SPRAY IRRIGATION
	TREE BUBBLER (2 PER SHADE TREE)



60%  
CONSTRUCTION  
DOCUMENTS  
NOT FOR REGULATORY APPROVAL,  
PERMITTING OR CONSTRUCTION  
LANDSCAPE ARCHITECT  
REGISTRATION NO. 974  
11/05/2021

NEW AQUATIC FACILITY  
COLONY PARK DISTRICT PARK  
7201 COLONY LOOP DR., AUSTIN, TX 78724

© 2021 Marmon Mok, LLP.  
Unauthorized reproduction  
is prohibited.  
Drawn JAP  
Checked MAM  
Date 11/18/2021  
Project No. 20031  
Revisions

SHEET TITLE  
IRRIGATION PLAN

SHEET NO.

L302

8/13/2021 1:25:52 PM  
C:\Users\jap\Documents\20031\_Austin Colony  
Park\_LP\_SitePlan.dwg