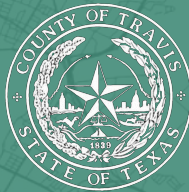


Community Development Commission

RESILIENCE HUBS

FEBRUARY 8, 2022



AGENDA

- I. Council Resolution
- II. Resilience Hub Overview
- III. Working Together



COUNCIL RESOLUTION 20210408-028

PLAN:

- Conduct an **assessment** to identify potential locations for resilience hubs.
- Explore "**passive survivability**", redundant power and water.
- **Engagement with each community**, center the needs of the most vulnerable and affected community members.
- Potential resilience hubs are based on **15-minute walkshed** of each neighborhood.

DELIVERABLE:

- **Budget** sufficient to fund recommendations and strategies to design and equip hubs.
- Plan, budget recommendations, funding strategies, and a timeline for designing and equipping an initial **six pilot hubs for disasters**.
- **Intergovernmental memorandum** necessary to memorialize community partnerships necessary to create resilience hubs."



WHY RESILIENCE HUBS?

Disaster Frequency and Intensity is Increasing

- Extreme Weather Events
- Power and Water Outages
- Health & Safety emergencies

Equity Focus

- Empower low-income communities and communities of color in the planning process
- Build an equity lens for all staff participating in the process
- Move as much as possible towards community leadership and ownership of the work

Extreme Weather Events Highlight the Need For

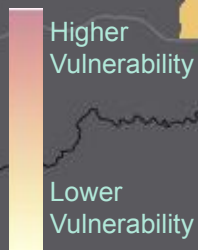
- Accessible community spaces
- Distribution centers (water, food, medicine, etc.)
- Back-up power & water
- Sheltering during events
- Truly engaging community



SVI in Travis County

Some communities are disproportionately exposed to and affected by climate hazards more than others based on social vulnerability.

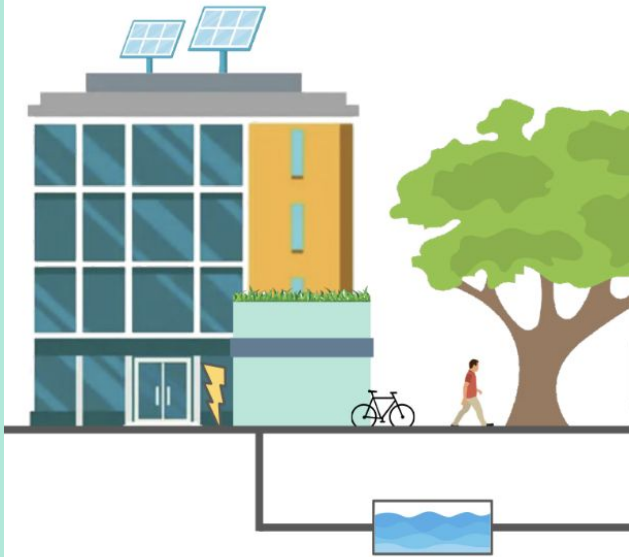
Social Vulnerability Index (SVI) is a measure of both the sensitivity of a population to natural hazards and its ability to respond to and recover from the impacts of hazards.



Source: A2SI



WHAT ARE RESILIENCE HUBS?



What they are:

- Networks of Physical Facilities
- Community Focused

What they are not:

- Replacement for traditional emergency planning and disaster response
- Replacement for sheltering plan

Day to Day v. Emergency

- 98% of the time, function to serve the community
- 2% of the time, activated with resilient systems



STAKEHOLDERS & TOPICS

- City and County
- Community Organizations
- Faith-based Groups
- Schools & Higher Ed
- Utility Providers
- Housing Authority
- Local Businesses
- Chambers of Commerce
- Others



RANGE OF FACILITIES

**Level 1
GATHERING
HUB**

**Level 2
RELIEF
HUB**

**Level 3
Name TBD**



DRAFT HUB LEVEL DEFINITIONS

Prerequisites	1. Physical ability to be a Resilience Hub, 2. Structure not exposed natural hazards, 3. Community daily access			
	Facility Attributes		Staffing + Supplies	Example uses
Level 1 GATHERING HUB	Gathering space (conditioned indoor & shaded outdoor space)	The facility has at least two (2) handicap accessible bathroom/stalls At least 3 publicly accessible outlets for phone charging	Small amount of snacks and 1 case of water Information	“Passive” Resource Centers Cooling Centers Warming Centers
Level 2 (Level 1+) RELIEF HUB	Parking lot for water/food distribution Wifi	Dry storage space Large indoor space (~40 people) with egress for distribution Charging stations	Larger supplies of food and water Kits based on community needs and events	“Active” Point of Distribution, Multi-Agency Resource Center
Level 3 (Level 2+) Grid-independent	24-Hour Shelter-capable (Sleeping area) Grid-independent power	Commercial kitchen Refrigerated storage Showers Backup Water System for toilets	Additional Shelter Staffing Resources	“Active” Shelter



STARTING WITH EXISTING FACILITIES

Range of Facility Types

- **City** (Rec Centers, Libraries, Health Centers, Convention Centers, etc.)
- **School Districts** (Elem, Middle, High School, etc.)
- **County**
- **Community College / Universities**
- **Health Clinics**

Range of Functionality

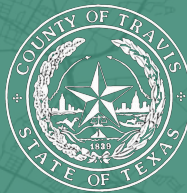
- Range of neighborhood typology
- Range of community needs
- Range of size and facility attributes

Baseline Facility Data Collection Now

- Mapping in Google Maps
- Analyzing based on SVI
- Sorting into Hub Levels
- Determine Gaps (Facility, Staffing, Supplies)



WORKING TOGETHER



THE APPROACH

Building Partnerships: AISD, Travis County, Austin Community College, Central Health

Identify Existing Assets and Facilities

- Identify gaps to create a hub and spoke network
- Creating a Google Map to ID existing facilities + assets

Identify & Prioritize Sites for Potential New Investments

- Focusing first on AISD, City of Austin, and Travis County
- Methodology focused on SVI, equity, transparency
- Consider range of 3 types of Hubs

Conduct Stakeholder Engagement to Inform the Process

- Centering Equity in the Process
- Starting in April 2022
- Created and met with a Community Advisory Committee
- Conduct more detailed Neighborhood level engagement to identify trusted sites

Upgrade Facilities, Train Staff, Launch the Hub and Spoke Network



AMERICAN RESCUE PLAN FUNDING

- \$3M allocated to Resilience Hubs by the Council-approved American Rescue Plan (ARP) funding framework
- We plan to share resources across a network of hubs for project planning and capital investments
- The funds need to be spent by December 31, 2024



DRAFT TIMELINE

Q1 2022

Q2 2022

Q3 2022

Q4 2022



Data Collection/Analysis

Map hazards and Social Vulnerability Index (SVI).
Conduct basic assessments, identify Level 1-3 sites

Community Engagement

Engage community groups and create an advisory board.
Provide outreach on Level 1-3 sites.

Initiate Pilots

Based on SVI and community groups, engage neighborhoods to determine needs, select pilot sites, and start implementing simple strategies

Implementation

For sites that are ready to function, train staff, get supplies, Website go-live, Communications and Promotion

For sites that need capital upgrades: Schematic design, design development, contract document, bid/selection, construction



Thank you!

