

AUS Environmental Assessment Briefing

Kane Carpenter, Environmental Manager

Sam Haynes, Acting Public Information & Marketing
Manager

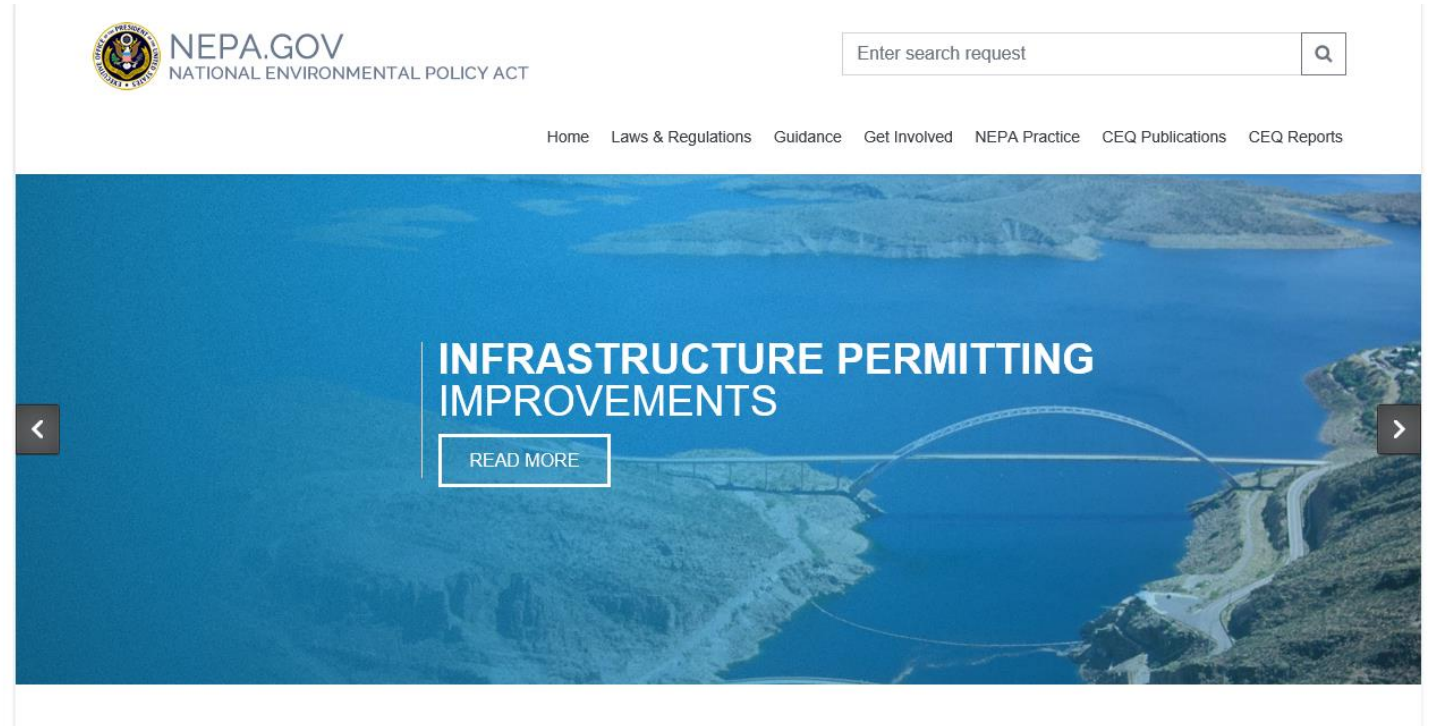


Austin-Bergstrom
International Airport

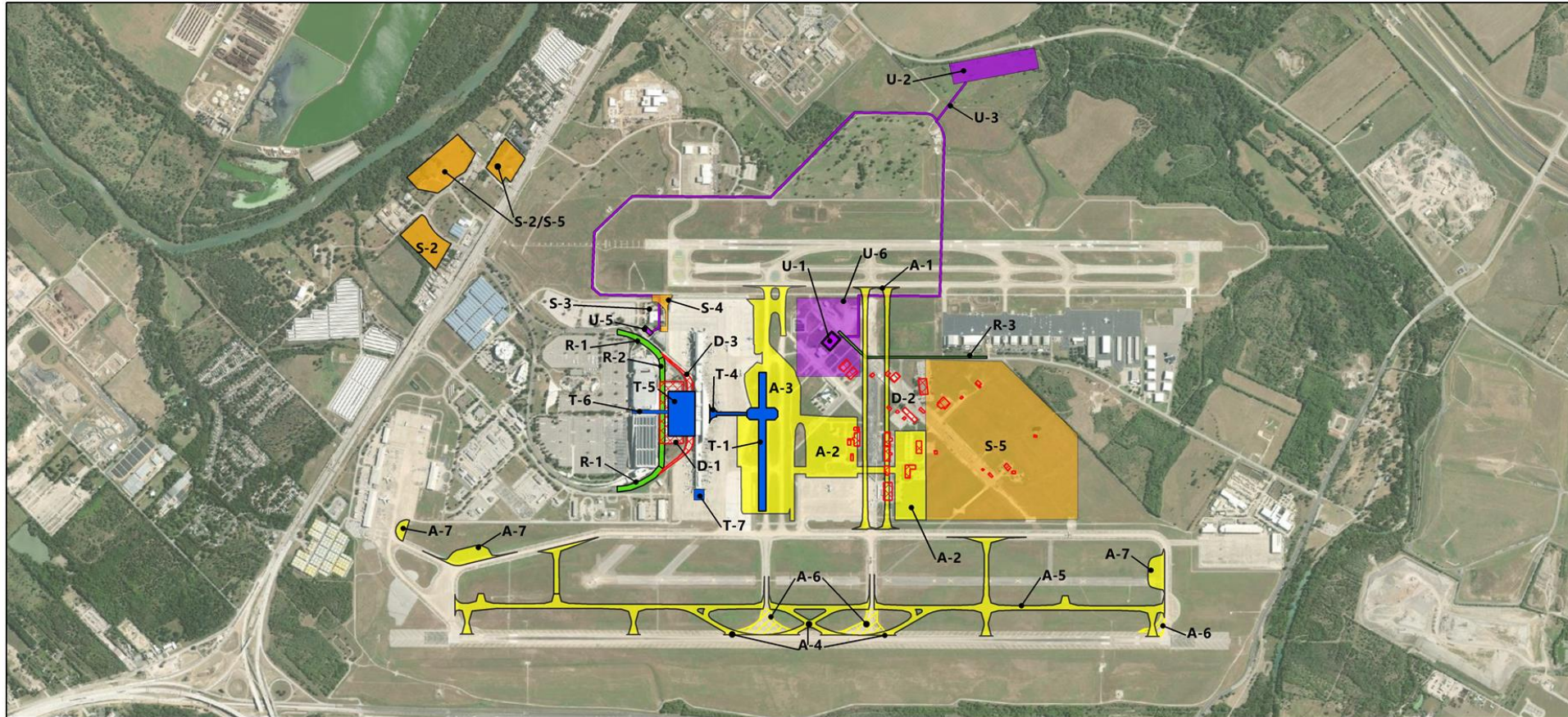


Topics

- Environmental Assessment (EA) Status
- Environmental Impact Study Areas
- Public Outreach



Proposed Action



Legend

Airfield

- A-1 Relocation of Taxiways H and J
- A-2 New RON Apron
- A-3 Concourse B Apron and Airfield Connections
- A-4 Runway 18R-36L Rapid Exit Taxiways
- A-5 New Taxiway D
- A-6 Demolition of Airfield Pavement
- A-7 Other Airfield Pavement
- A-8 Taxiway Lighting and Signage (Not Pictured)

Terminal

- T-1 New Concourse B
- T-2 New Concourse B Loading Bridges (Not Pictured)
- T-3 New Ramp Tower (Not Pictured)
- T-4 Connector to Concourse B
- T-5 New/Expanded Arrival/Departure Hall
- T-6 Pedestrian Bridge to CONRAC/Parking Garage
- T-7 BJT West Concourse Gate Expansion

Facility Demolition

- D-1 Existing Parking Garage
- D-2 South Buildings
- D-3 Existing Terminal Upper Roadway

Roadways

- R-1 Upgrade Existing Access Roadway Network
- R-2 New Terminal Curbside Roadway
- R-3 Emma Browning Road

Support

- S-1 Hydrant Fueling System for Concourse B (Not Pictured)
- S-2 New Employee Parking Lot
- S-3 Catering Facility
- S-4 New Checkpoint Alpha Guard Shack
- S-5 Construction Laydown Zone

Utilities and Infrastructure

- U-1 New Central Utility Plant
- U-2 New Austin Energy Substation
- U-3 New Electrical Ductbanks
- U-4 South Campus Stormwater Infrastructure (Not Pictured)
- U-5 Rehabilitation/Replacement of Existing Central Utility Plant
- U-6 Utility Zone

Note: Exhibit depicts the general location of project components and is subject to change based on final design.



Environmental Assessment Impact Categories

- **Affected Environments**

- Air Quality
- Biological Resources
- Climate
- Coastal Resources
- Parkland, recreational, etc.
- Hazardous Materials,
- **Historical, archeological and cultural resources**
- Land Use

- **Affected Environments**

- Natural resources & energy supply
- **Noise**
- Farmland
- Socioeconomic & environmental justice
- Visual effects
- **Water Resources (floodplain, wetlands, scenic rivers, etc.)**

Environmental Assessment Update

- **Major Sections in an EA**

- 100% - Statement of Purpose and Need
- 100% - Description of Proposed Action
- 100% – Alternatives Analysis – Focused on Terminal
- 95% - Affected Environments
- 95% - Confirm Significant Environmental Consequences
- Scheduling - Public Presentations & Feedback
- On-going - FAA coordination
- Not started - Finding of no significant impact (FONSI) issued by FAA



Final Public Outreach Events

- Virtual Draft EA Public Meeting on March 23, 2022
- In-Person Open House March 26, 2022
- Draft EA available for review and comment on February 22, 2022

- EA Website is live (Spanish and English)
 - [AUS Evaluación Ambiental \(Spanish\) | SpeakUp Austin!](#)
 - [AUS Environmental Assessment | SpeakUp Austin!](#)

Public Outreach Overview

- Lead Consultant Team: Adisa Communications
- Outreach to airport-adjacent neighbors & General Study Area
 - In-person & digital outreach
 - Mailed invitations, outreach to HOAs, in-person tabling at community events
- City-wide public notification efforts
 - Radio, print ads, airport owned media



Questions



Austin-Bergstrom
International Airport

Kane Carpenter
Environmental Manager
Kane.carpenter@austintexas.gov

