

# 410 E. 5<sup>th</sup> Street

---

Historic Landmark Commission

February 28, 2022



Trinity Street

Neches Street

E 5th Street

# Overview

---

## Lot Size:

- 0.82 acres, or approximately 35,868 SF

## Zoning:

- CBD (Central Business District)

## Built:

- Circa 1943

## Current Use:

- Condominiums

## Historic Use:

- Civic building









©2020 Google

©2020 Google

E 5th  
← 300 31 400 →





# Landmark Designation Criteria

---

A property must meet at least two of the below criteria:

- i. Architecture
- ii. Historical Associations
- iii. Archeology
- iv. Community Value
- v. Landscape Feature

# i. Architecture

---

- Embodies the distinguishing characteristics of a recognized architectural style, type, or method of construction;
- Exemplifies technological innovation in design or construction; displays high artistic value in representing ethnic or folk art, architecture, or construction;
- Represents a rare example of an architectural style in the city;
- Serves as an outstanding example of the work of an architect, builder, or artisan who significantly contributed to the development of the city, state, or nation;
- Possesses cultural, historical, or architectural value as a particularly fine or unique example of a utilitarian or vernacular structure; or
- Represents an architectural curiosity or one-of-a-kind building.



# i. Architecture

---

## Modifications and Alterations to the Structure:

- Horizontal banding
- Steel balconies
- Porthole windows added
- Replaced doors and windows
- Removed signage
- Service vents
- Removed entrance and staircase on east wing
- Fourth floor windows above the porthole windows were enlarged vertically

# Structure History

---

**1928** – Original building constructed “east wing”

- Architect unknown
- Two-story brick building

**1934** – Expansion to original building

- Designed by Page Brothers
- Expanded building to the west

**1943** – Dramatic expansion of the original building

- Designed by either Ernest V. Manning or John L. Scott
- Added a 3<sup>rd</sup> floor to original building and built a three-story reinforced concrete “west wing”

**1948** – Addition of 4<sup>th</sup> floor to west wing

**1999** – Conversion of structure to condominiums

- Designed by Charles Fisk

## ii. Historical Associations

---

The property has long-standing significant associations with persons, groups, institutions, businesses, or events of historic importance which contributed significantly to the history of the city, state, or nation; or represents a significant portrayal of the cultural practices or the way of life of a definable group of people in a historic time.



## ii. Historical Associations

---

Long standing historic association:

- Texas State Department of Health
  - *“...served as the headquarters for only 15 years...”*
  - *“Little more than a decade after the expansion was constructed...A new \$5 million, multi-building facility for the State Department of Health opened in 1958 on W. 49th Street”*
  - *“The Texas Department of State Health Services complex at 1100 W. 49<sup>th</sup> Street holds a stronger association with the agency.”*

# Landmark Designation Criteria

---

## iii. Archeology

The property has, or is expected to yield, significant data concerning the human history or prehistory of the region;

## iv. Community Value

The property has a unique location, physical characteristic, or significant feature that contributes to the character, image, or cultural identity of the city, a neighborhood, or a particular group.

## v. Landscape Feature

The property is a significant natural or designed landscape or landscape feature with artistic, aesthetic, cultural, or historical value to the city.

# Request

---

We respectfully request that you grant the release of the demolition permit for this structure, upon completion of a City of Austin documentation package.





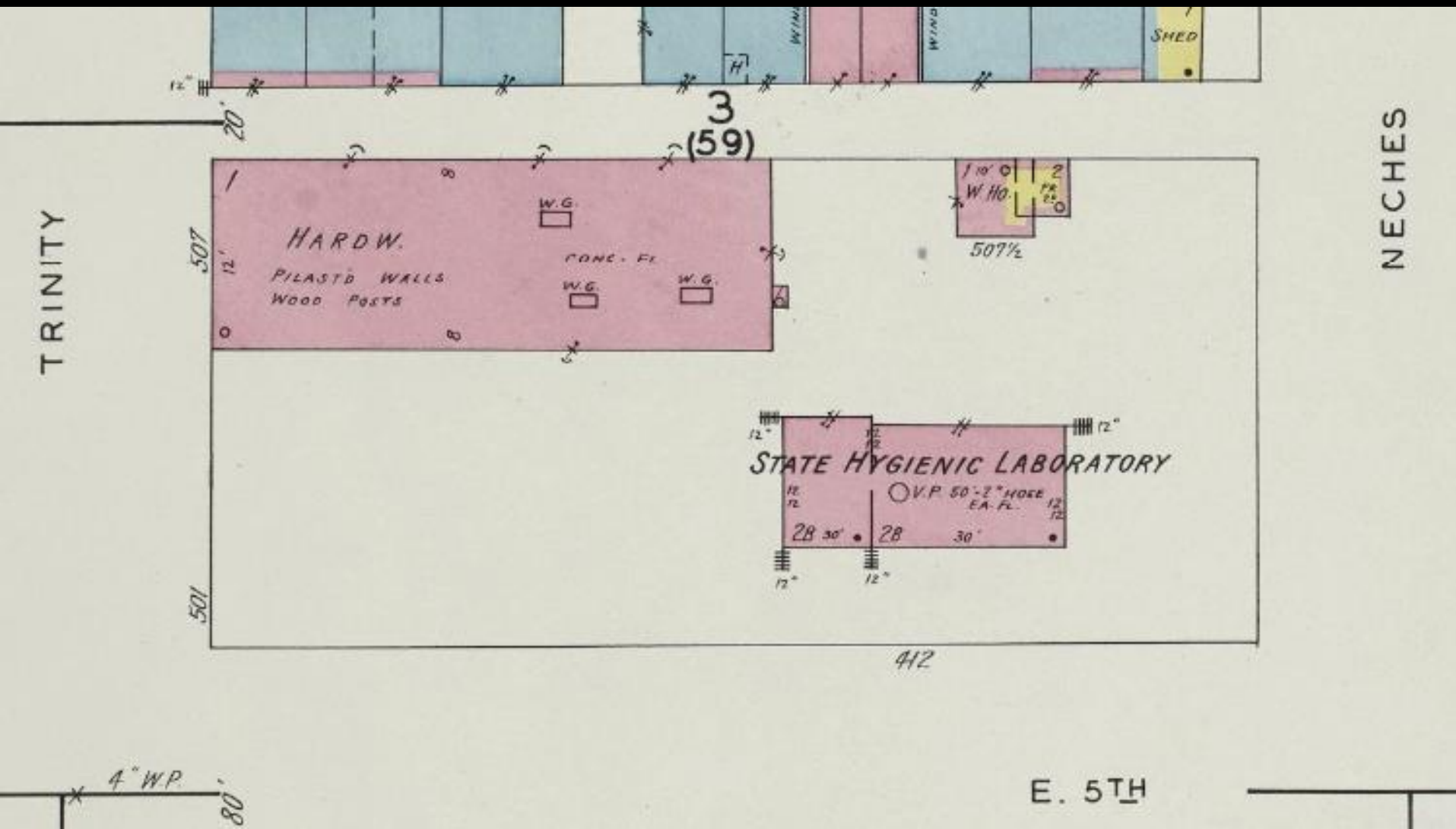
# Secretary of Interior: National Register Criteria

---

A National Register property must meet at least one of the below National Register criteria:

- A. Associated with events that have made a significant contribution to the broad patterns of our history; or
- B. Associated with the lives of persons significant in our past; or
- C. Embody the distinctive characteristics of a type, period, or method of construction, or that represent the work of a master, or that possess high artistic value, or that represent a significant and distinguishable entity whose components may lack individual distinction; or
- D. Yield, or may be likely to yield, information important in prehistory or history.

# 1935 Sanborn





1961 Sanborn

