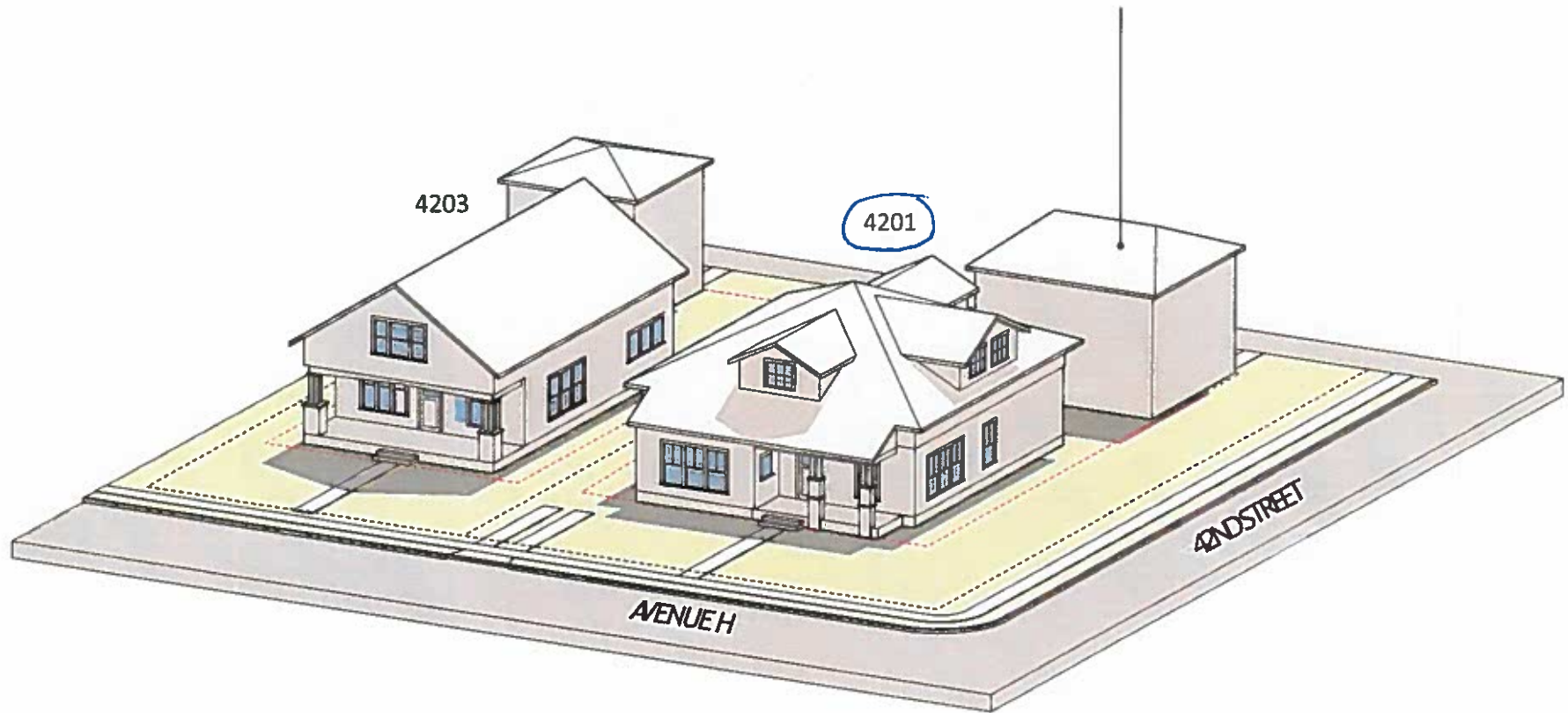
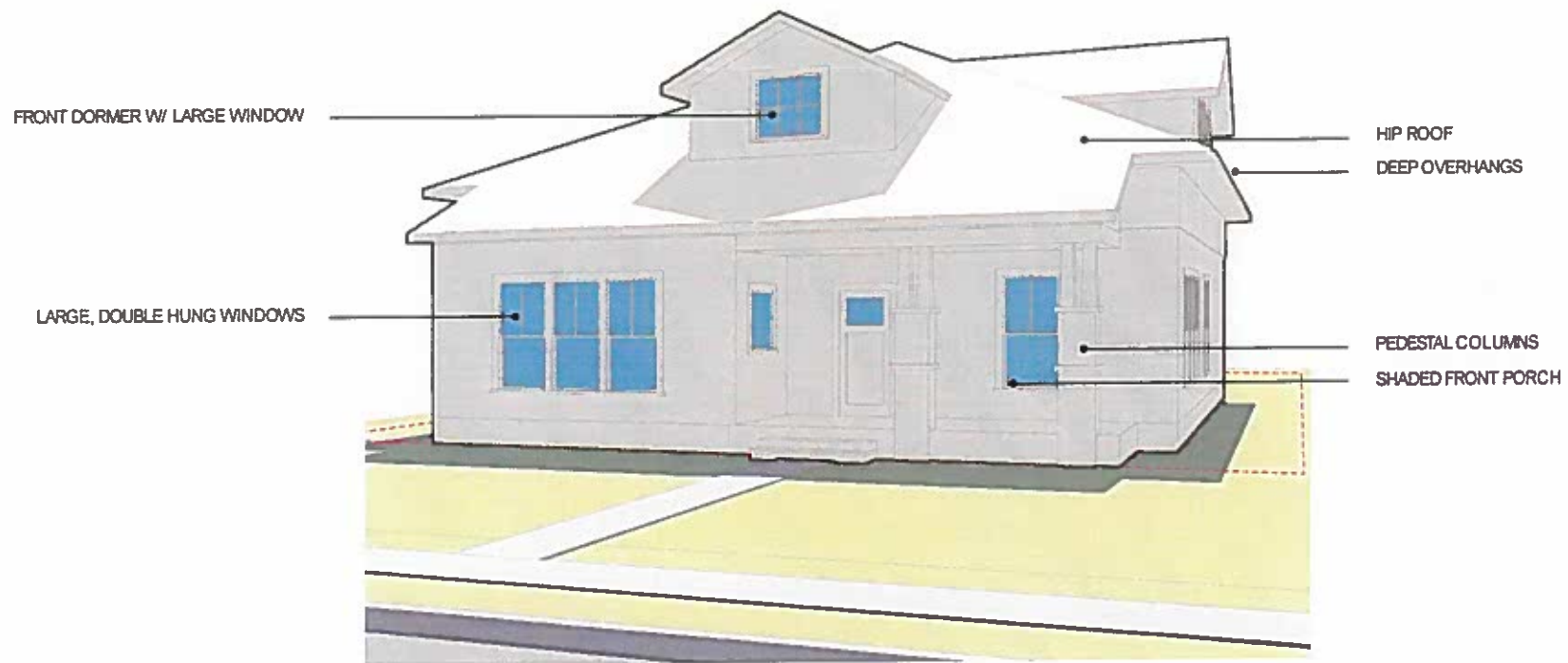


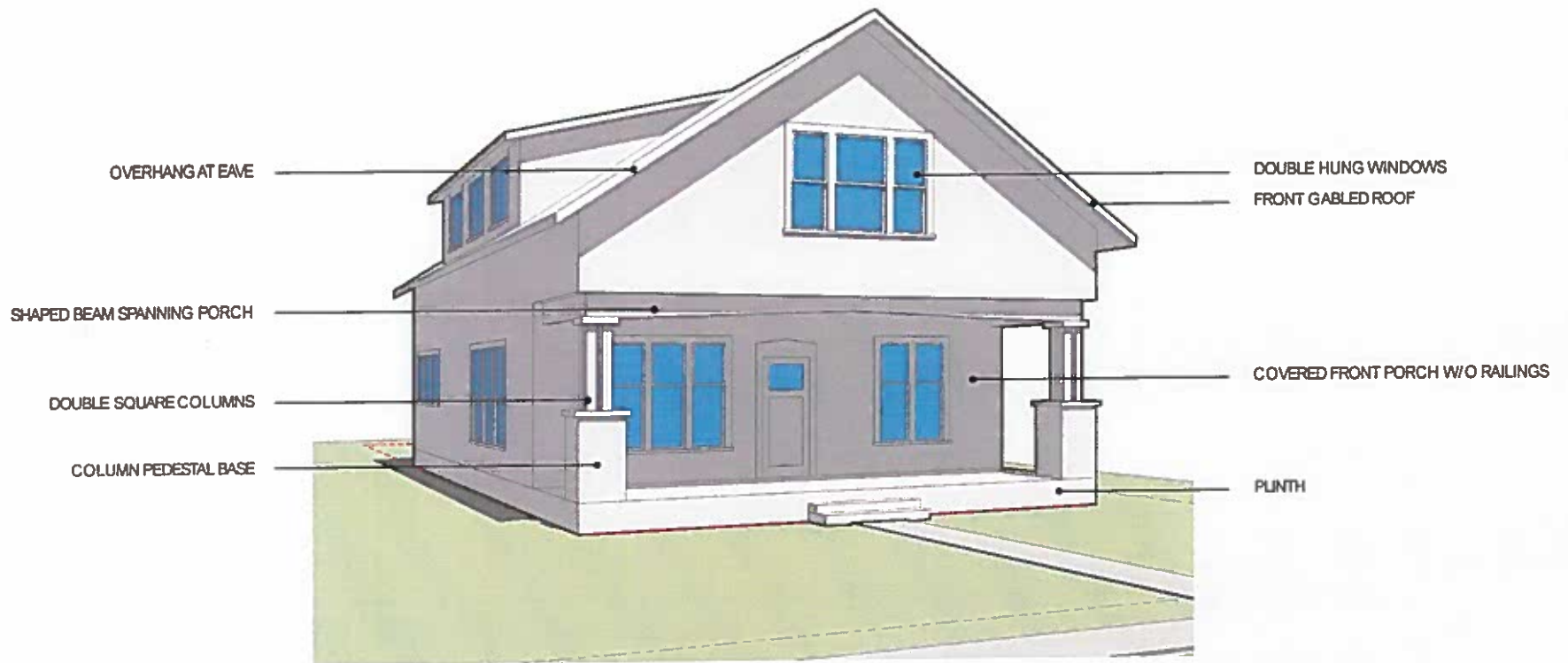
Detached garages have the potential to be two stories, with a quest suite or office at the second level. A small ADU is another alternative at the second story, but will require an additional parking space.





PROPOSAL D:

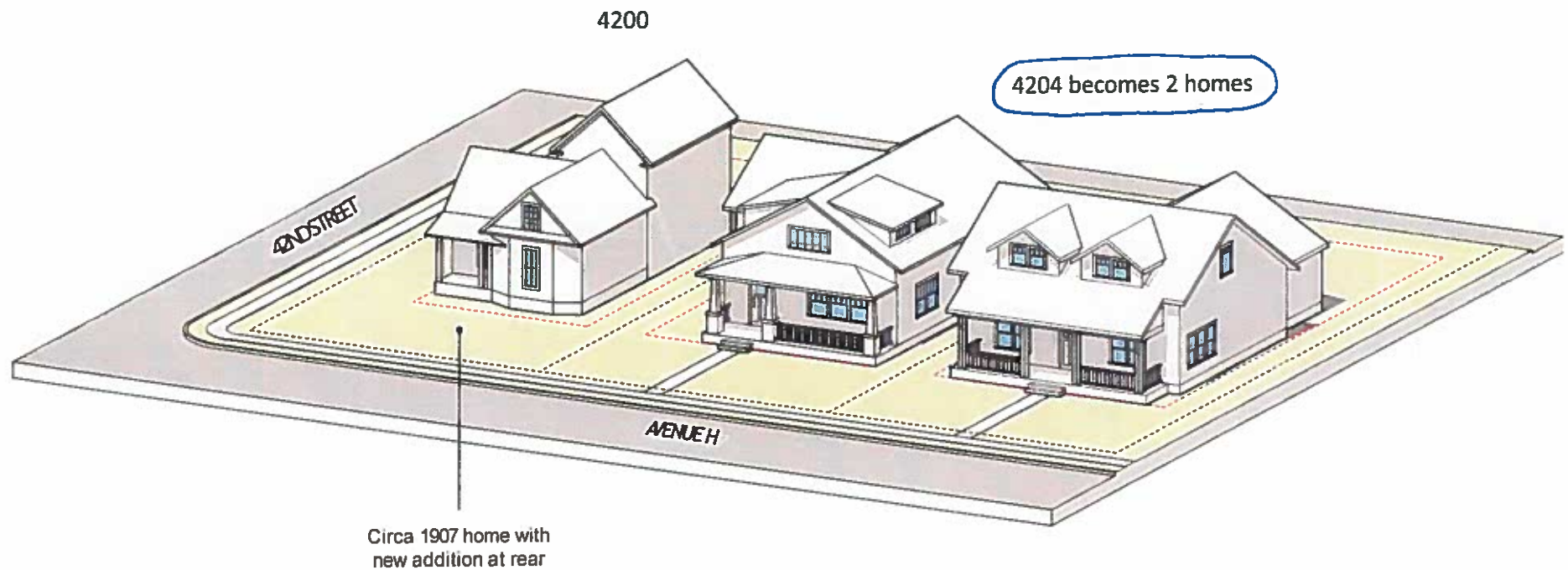
The largest home proposed, this two-story structure is sized for a wide corner lot. The roof is a single hip roof with dormers to receive light at the second story. The front facade incorporates a large porch with pedestal columns. Additional detailing to follow throughout next design stages, such as exposed rafter tails, materiality, and color.

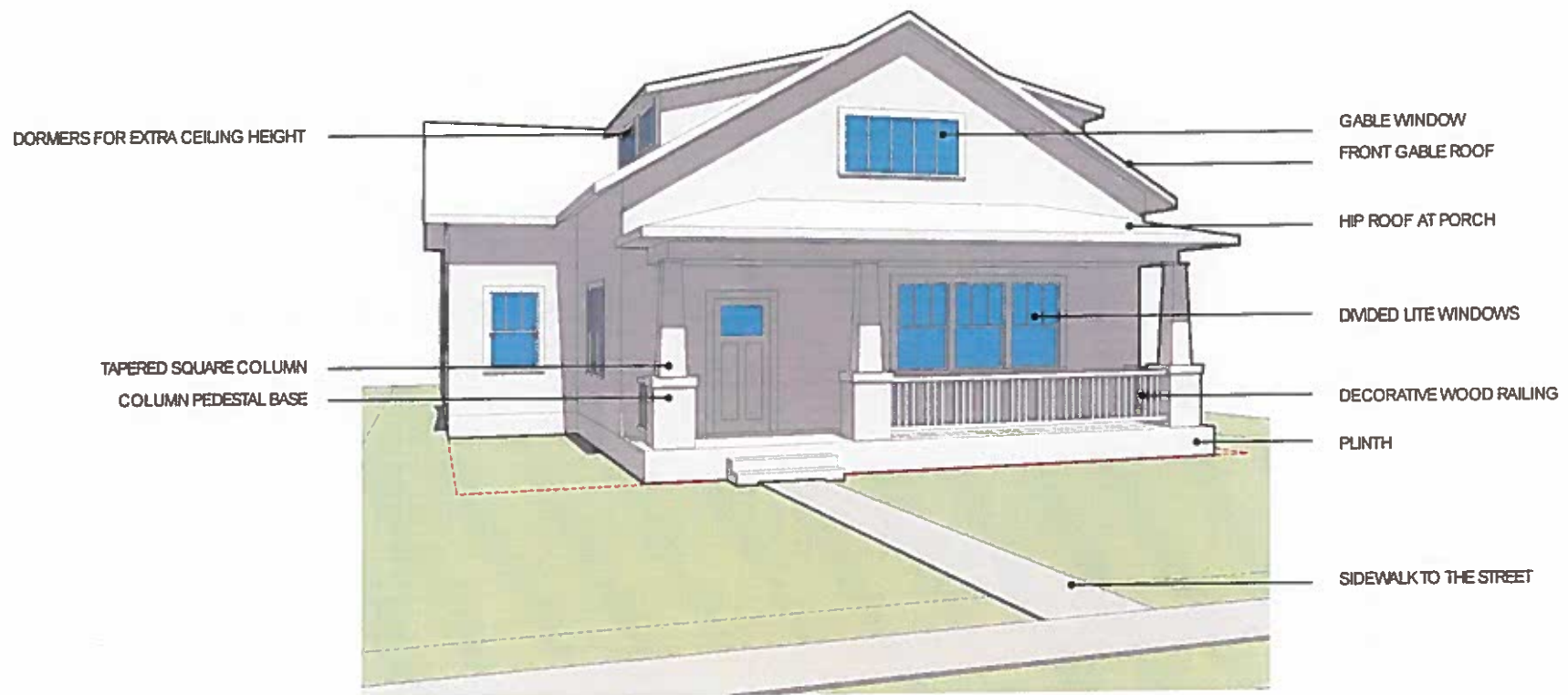


PROPOSAL C:

This home has a grand porch nestled under the second story. The simple roof line of this concept corresponds with the single gable massing of many bungalows throughout the neighborhood.

Representative of future infill development, these massing models illustrate options for new residences along Avenue H. Our design focused on craftsman style architecture with an emphasis on the scale of the homes as well as the streetscape, which are important features to Hyde Park residents.





PROPOSALA:

This two-story bungalow has strong curb appeal with a wide front porch along the street. To keep the scale of the house in relation to surrounding homes, the wide gable roof and dormers provide space for upstairs bedroom suites.



PROPOSAL B:

With a side gabled roof, this two-story home fills the lot from side setback to side setback. The front porch extends across the façade with double columns and a decorative railing. Double dormers above the porch allow for handsome windows at the second story.

