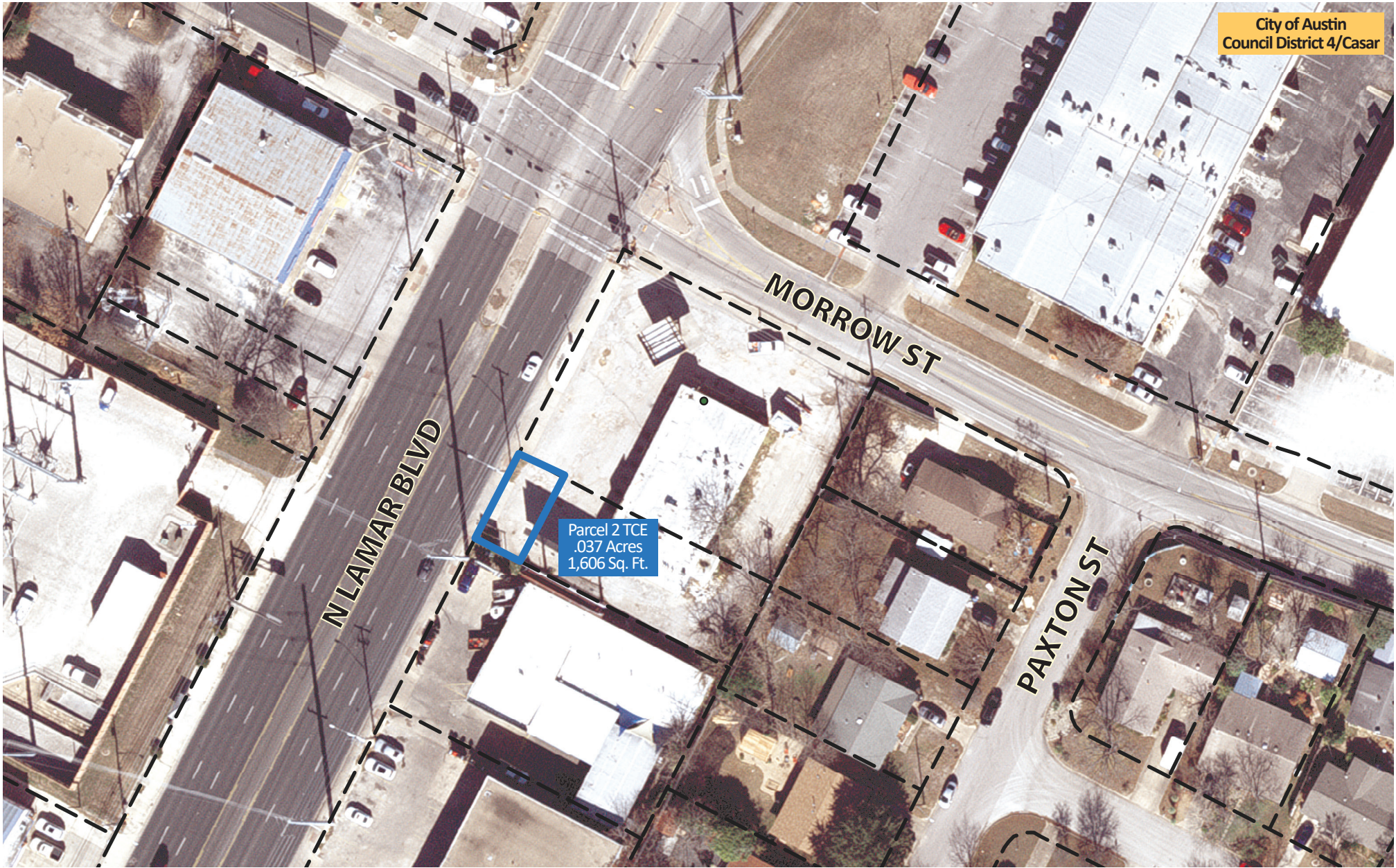
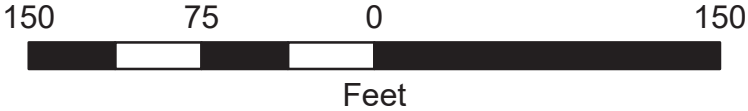


Parcel 2 - 7543 N Lamar Blvd



City of Austin
Council District 4/Casar

Parcel 2 TCE
.037 Acres
1,606 Sq. Ft.



2021 Aerial Imagery, City of Austin

This document is for informational purposes and may not have been prepared for or be suitable for legal, engineering, or surveying purposes. It does not represent an on-the-ground survey and represents only the approximate relative location of property boundaries.

This has been produced by AUSTIN ENERGY for the sole purpose of geographic reference. No warranty is made by the City of Austin regarding specific accuracy or completeness.

Produced by A Katz, 1/14/2022