

# Waller Creek Local Government Corporation

## *Design Coordination between I-35 Capital Express and Waterloo Greenway Creek Delta (The Confluence) Projects*

Eric Bollich, P.E., PTOE  
City of Austin Transportation Department

April 13, 2022



AUSTIN TRANSPORTATION

# What are the Relevant Transportation Issues?

## High-Level Summary

- TxDOT's I-35 Capital Express Program is proposing grade-separated crossings of frontage roads at E 4<sup>th</sup> Street near Capital Metro's MetroRail and City of Austin's LAB
- Capital Express requires an approximate 2.5' grade change of E 4th Street near Sabine Street

## Impacts to Creek Delta Project

- The grade change along 4th Street impacts the Creek Delta plaza and trail connections in this area
- The City (ATD, WPD, PARD) in partnership with the Waterloo Greenway Conservancy are procuring MVVA to provide additional services through May 2022
  - Study the impact of the grade-separated change along 4th Street to the Creek Delta Project
  - Accommodate minor modifications to the Creek Delta 100% Construction Documents (issued in March 2022)
- If needed, City of Austin will issue an addendum to the Creek Delta bid documents with required modifications

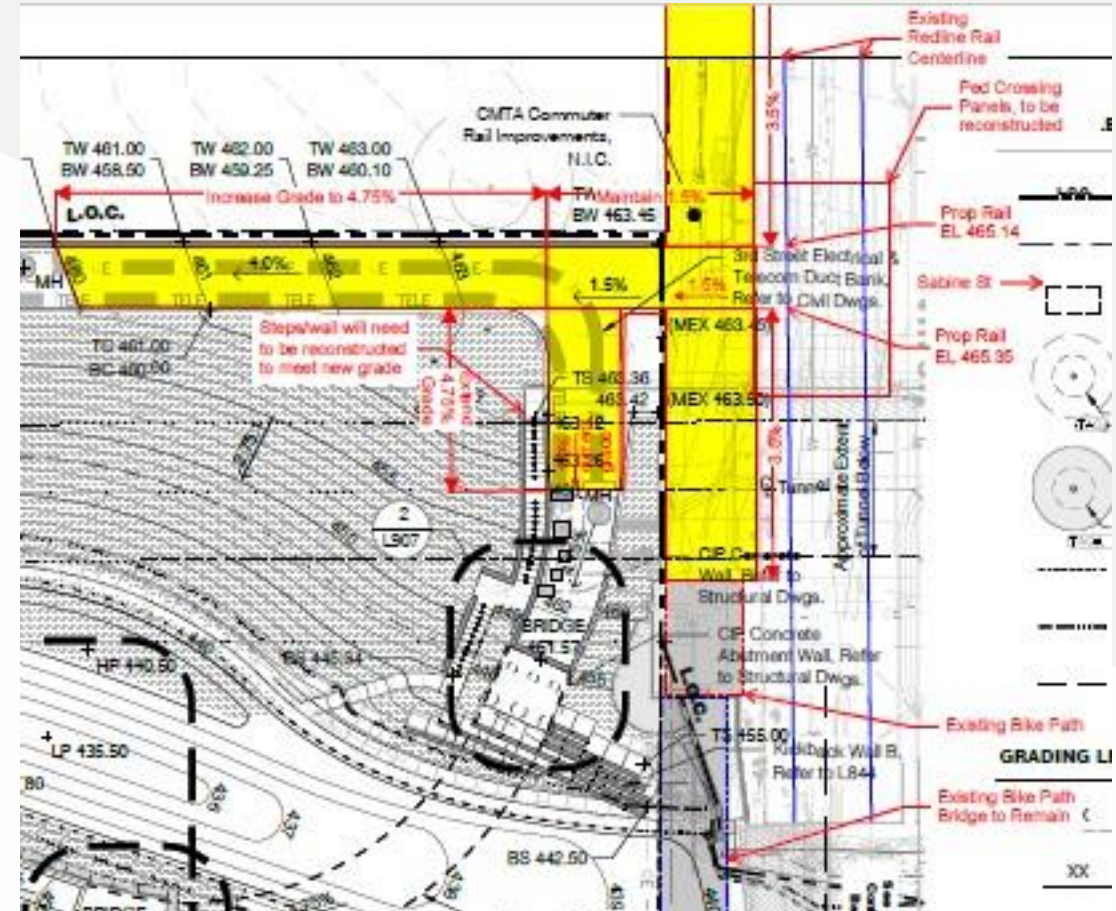
# What Will the Additional Services Accomplish?

## Goals and Outcomes

- Advise TxDOT on how to coordinate Capital Express designs with Creek Delta
- Do not significantly impact the approved Creek Delta Construction Documents
- Honor the intention of the Creek Delta plaza design, universal access, and interface with E 4th and Sabine Streets

## Next Steps

- Assess the anticipated impacts from the Capital Express Program
- Determine the required design modifications to Creek Delta
- Coordinate with project stakeholders



# Questions?

**Eric Bollich, P.E., PTOE**

Managing Engineer

Austin Transportation Department

[eric.bollich@austintexas.gov](mailto:eric.bollich@austintexas.gov)

(512) 974-7767