

SHEET INDEX:	
A0.0	- COVER
A0.3	- HISTORIC, NEW AND DEMO - SITE PLANS
A0.4	- DEMO & HISTORIC PLANS
	BASEMENT & SECOND FLOOR
A0.5	- DEMO & HISTORIC PLANS
	FIRST FLOOR
A1.0	- BASEMENT FLOOR PLAN - ARCHITECTURAL
A1.1	- FIRST FLOOR PLAN - ARCHITECTURAL
A1.2	- SECOND FLOOR PLAN - ARCHITECTURAL
A1.3	- ROOF PLAN - EXISTING W/ PROPOSED
A3.0	- EXTERIOR ELEVATION HISTORIC DRAWINGS &
	EXISTING CONDITIONS IMAGES OF WEST &
	NORTH ELEVATIONS
A3.1	- EAST ELEVATION - DEMO & ARCHITECTURAL
A3.2	- NORTH ELEVATION - DEMO & ARCHITECTURAL
A3.3	- WEST ELEVATION - DEMO & ARCHITECTURAL
A3.4	- SOUTH ELEVATION - EXISTING
	NORTH & EAST HISTORIC EXTERIOR ELEVATION
	DRAWINGS IMAGES OF EXISTING CONDITIONS.

FOR HISTORIC REGULATORY
REVIEW ONLY:
NOT FOR CONSTRUCTION.

McCrummen-Wroe House
2300 WINDSOR ROAD, AUSTIN, TEXAS 78703

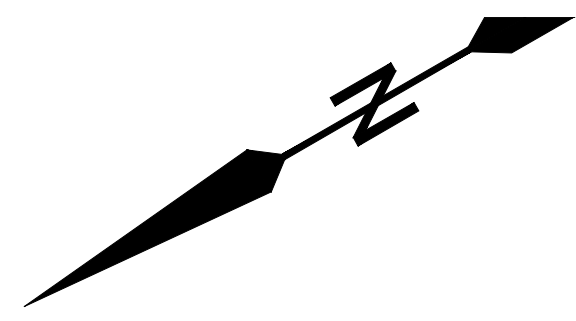
Revisions

APRIL 8, 2022

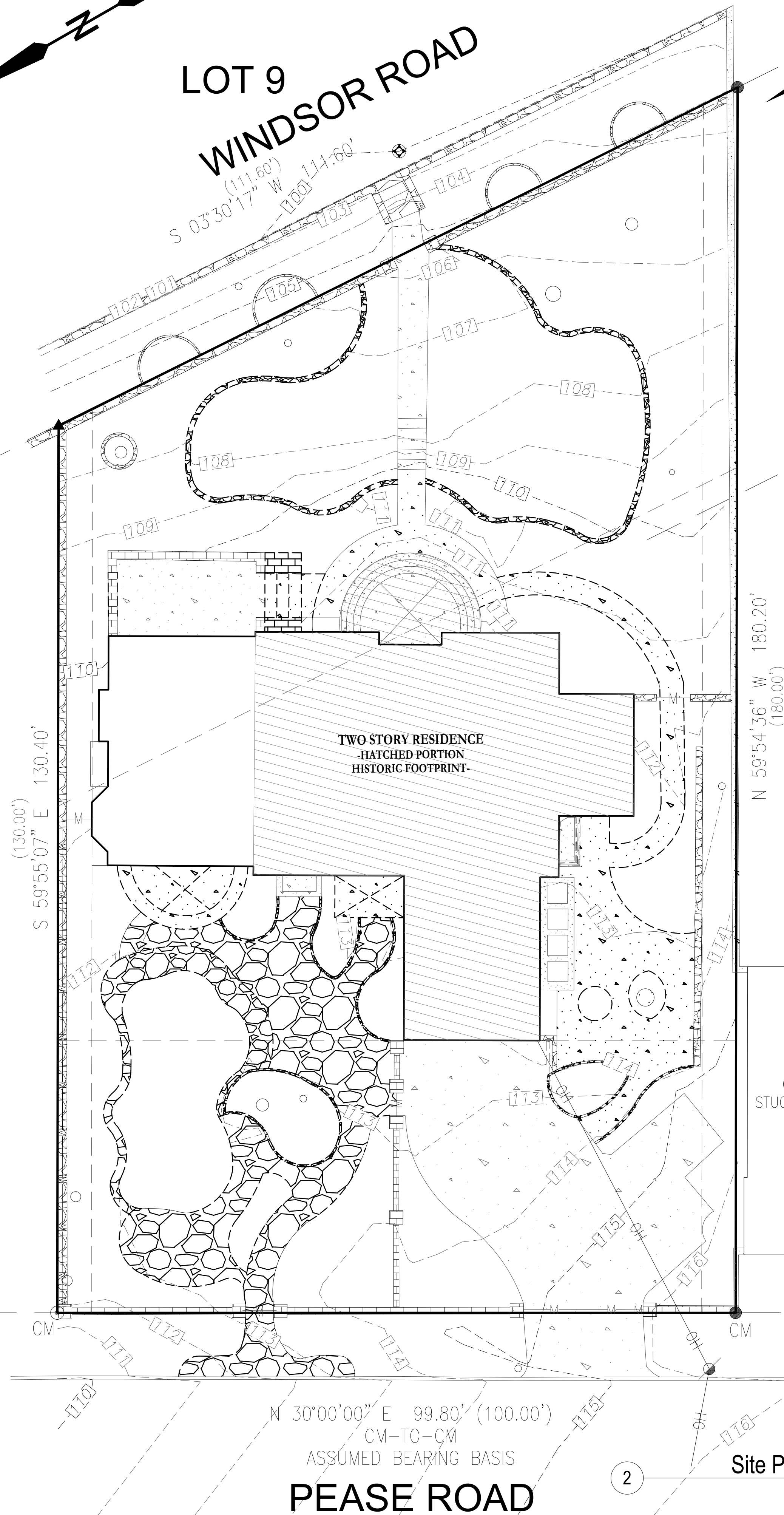
Cover

A0.0

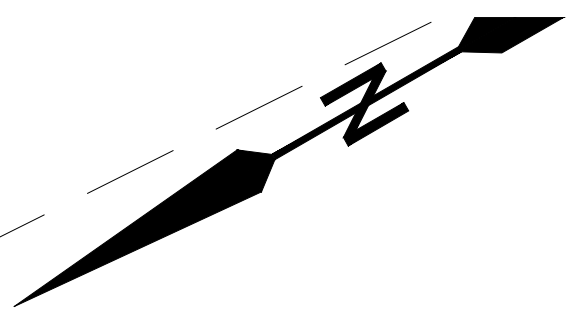
GRASSO GAY
ARCHITECTS
info@grassogay.com office: (512) 913-3057



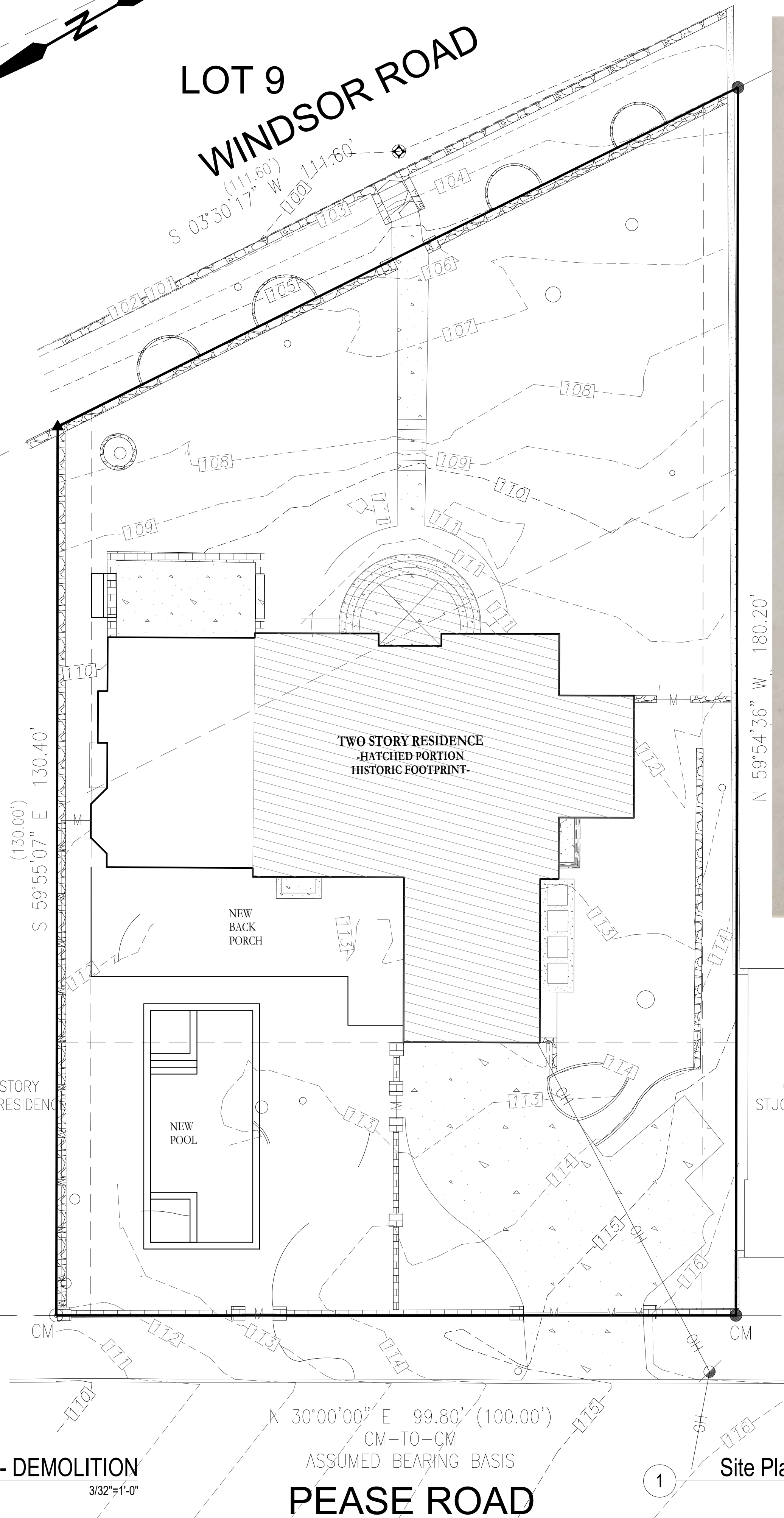
LOT 9
WINDSOR ROAD



Site Plan - DEMOLITION
3/32"=1'-0"



LOT 9
WINDSOR ROAD



Site Plan - ARCHITECTURAL
3/32"=1'-0"

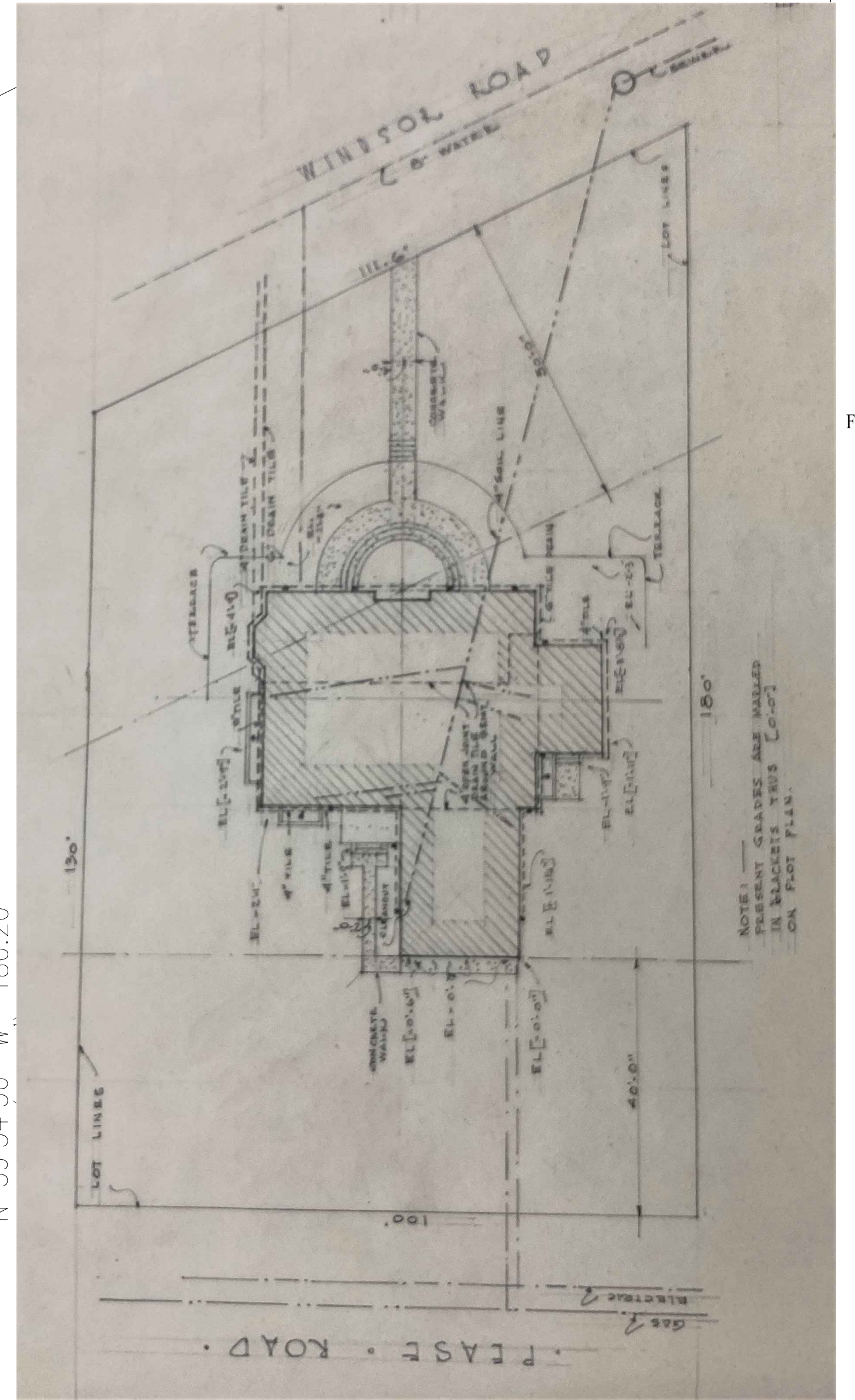


Image of Hand Drafted
Site Plan - Historical
NTS



FOR HISTORIC REGULATORY
REVIEW ONLY:
NOT FOR CONSTRUCTION.

McCrummen-Wroe House
2300 WINDSOR ROAD, AUSTIN, TEXAS 78703

HISTORIC REVIEW SET

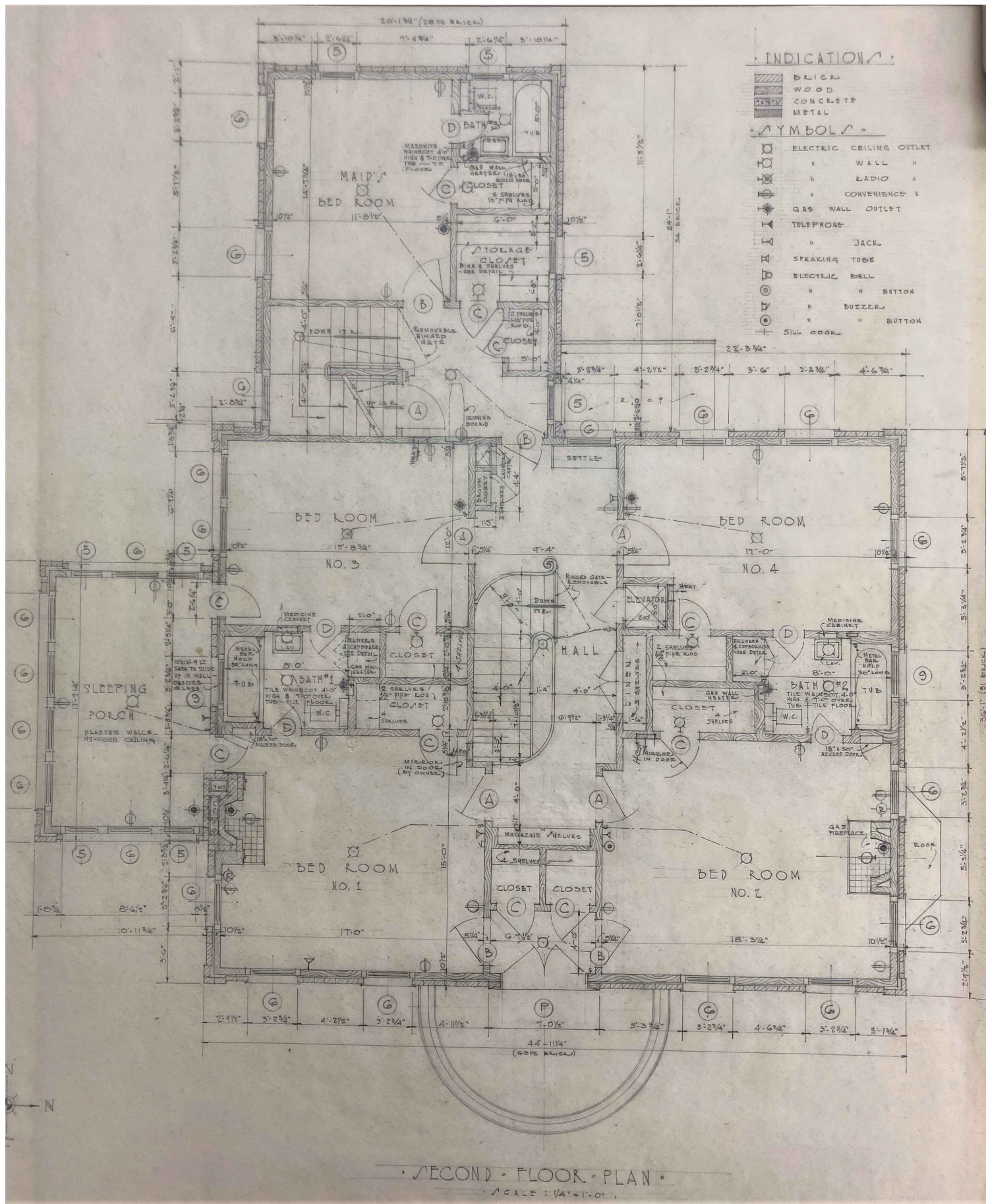
Revisions

APRIL 8, 2022

Site Plan

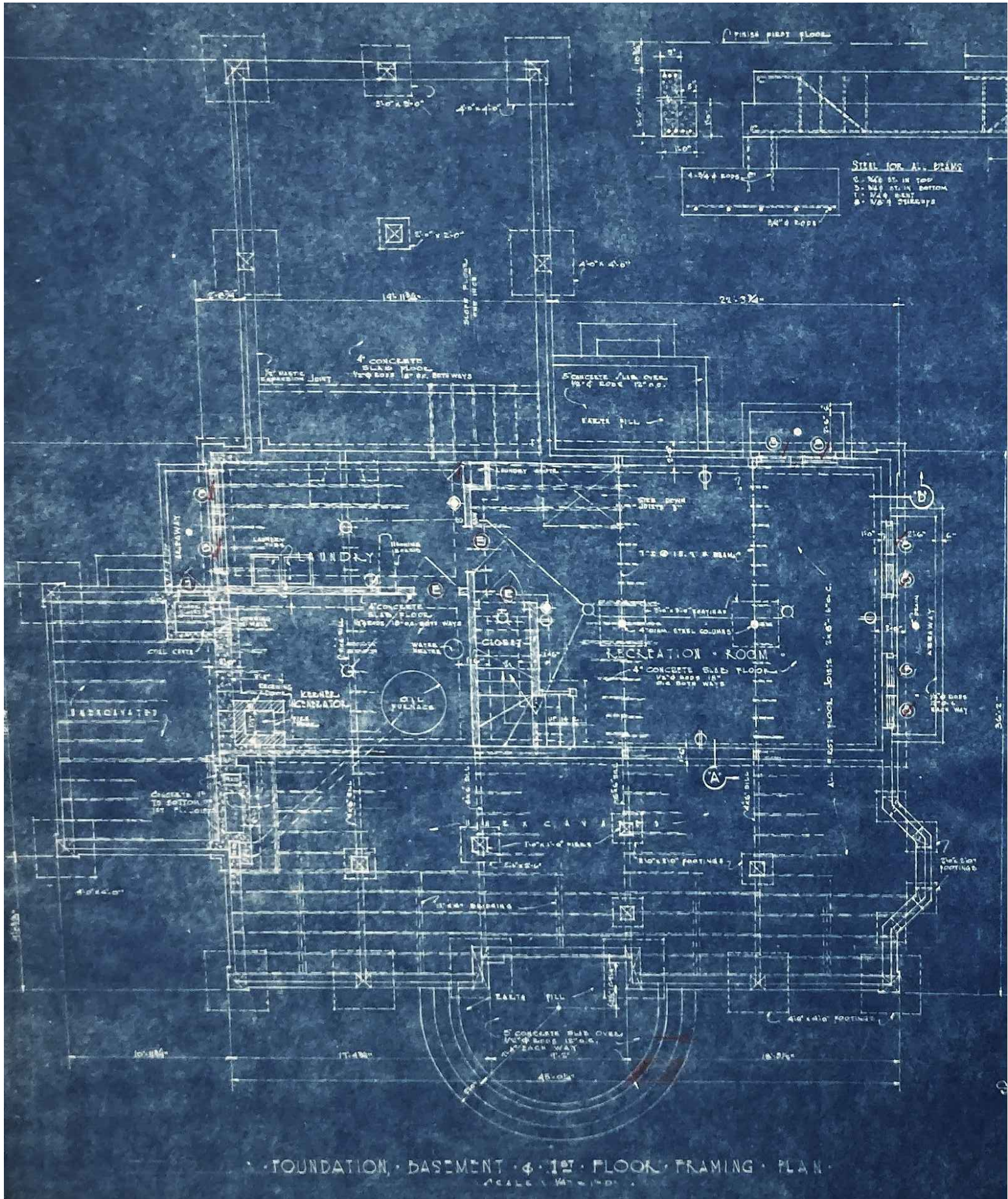
A0.3

GRASSO GAY
ARCHITECTS
info@grassogay.com office: (512) 913-3057



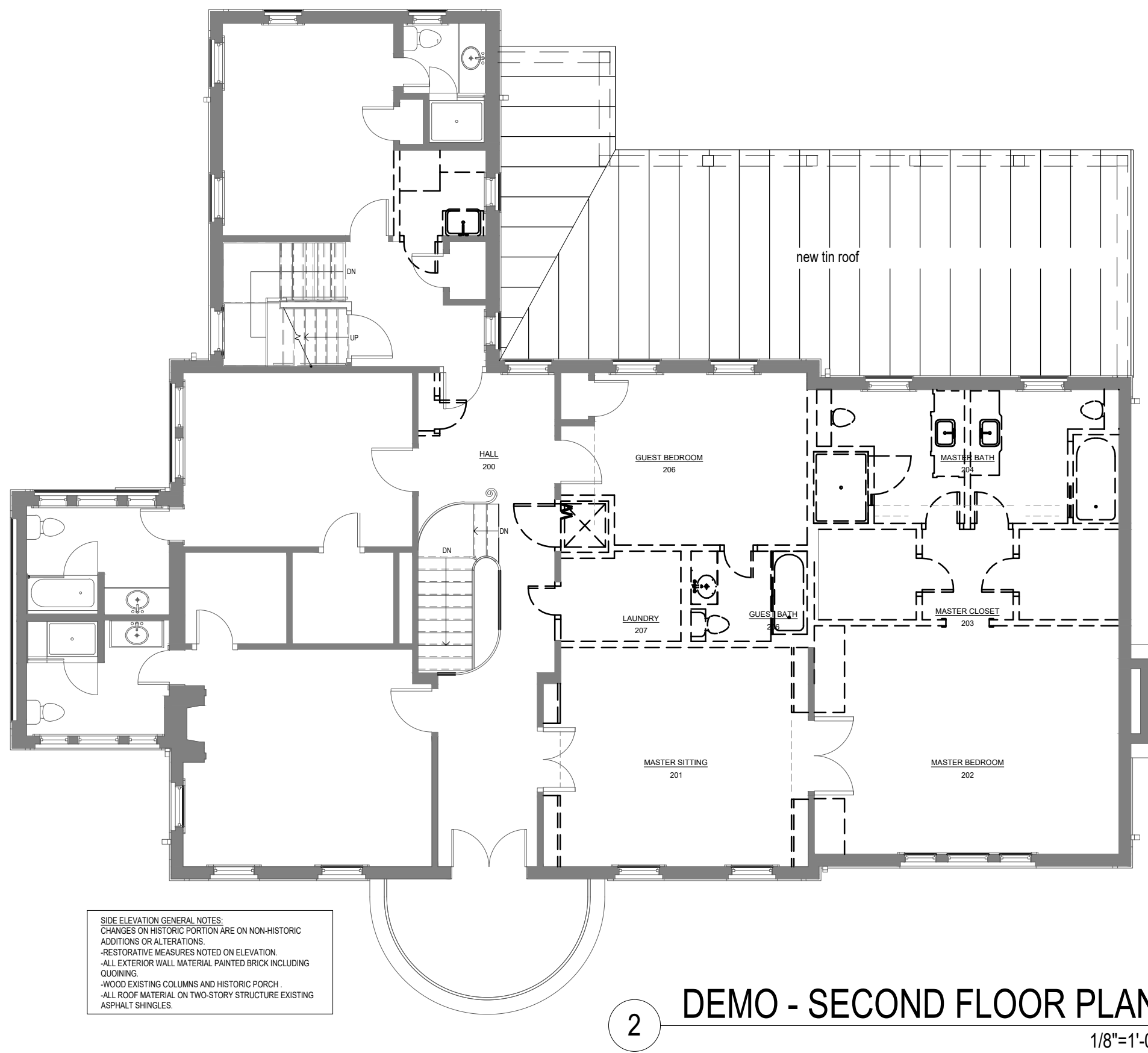
HISTORIC SECOND FLOOR PLAN
Illustrates: Original hand drafted historic second floor plan.
No Changes proposed to exterior envelope - Interior will remain intact with the exception of tying in the new porch structure.
Image cannot be reproduced or utilized for any other purpose but for Historical Review.

4 HISTORIC - SECOND FLOOR PLAN
nts



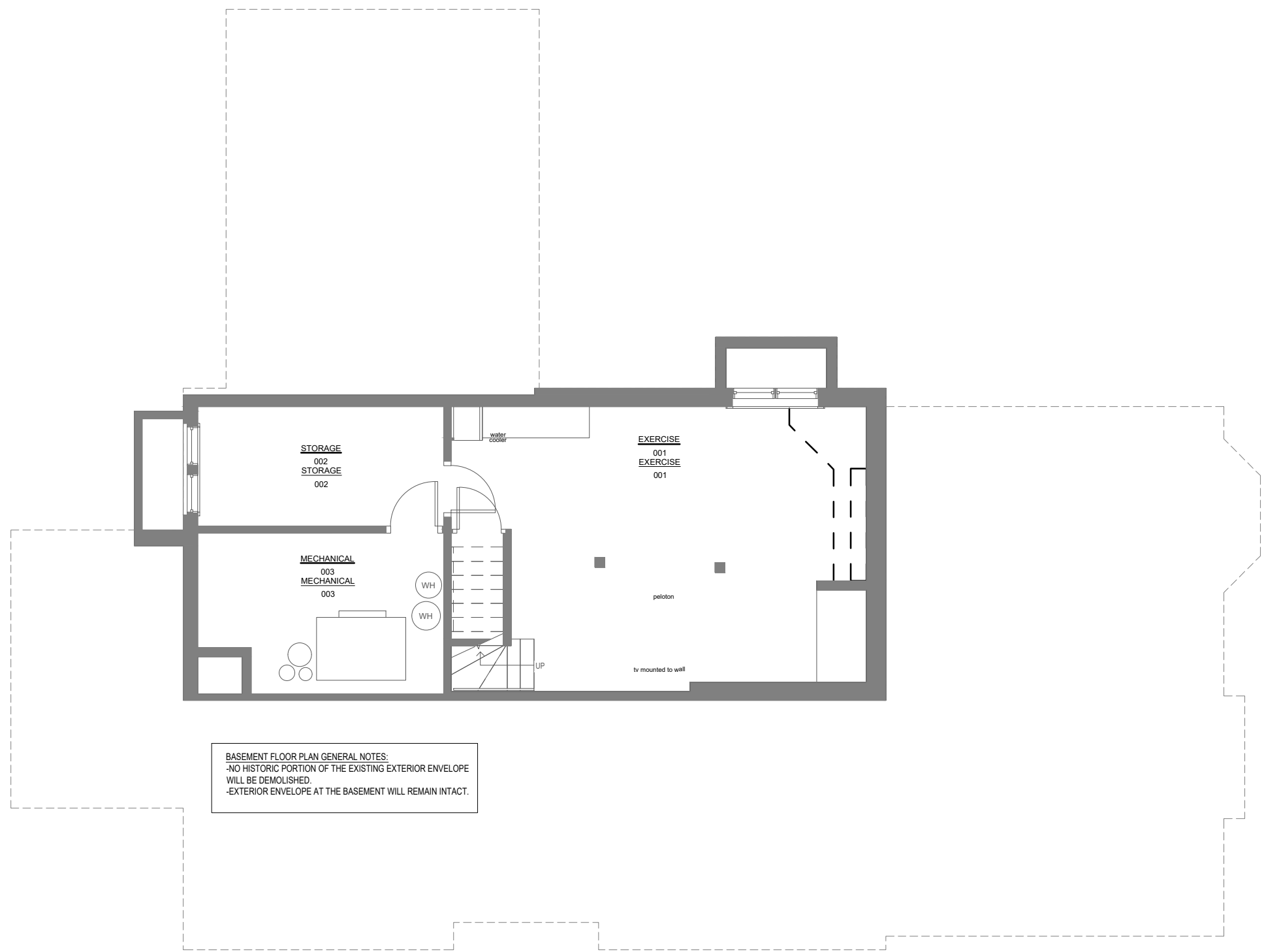
HISTORIC BASEMENT DRAWING.
Illustrates: Original hand drafted historic basement plan. Plan matches as-built drawings. No changes proposed to exterior envelope of plan.
Image cannot be reproduced or utilized for any other purpose but for Historical Review.

3 HISTORIC - BASMENT FLOOR PLAN
nts



SIDE ELEVATION GENERAL NOTES:
CHANGES ON HISTORIC PORTION ARE ON NON-HISTORIC
ADDITIONS OR ALTERATIONS
RESTORATIVE MEASURES NOTED ON ELEVATION
ALL EXTERIOR WALL MATERIAL, PAINTED BRICK INCLUDING
QUINING
WOOD EXISTING COLUMNS AND HISTORIC PORCH
ALL ROOF MATERIAL ON TWO-STORY STRUCTURE EXISTING
ASPHALT FERRULES

2 DEMO - SECOND FLOOR PLAN
1/8"=1'-0"



BASEMENT FLOOR PLAN GENERAL NOTES:
NO HISTORIC PORTION OF THE EXISTING EXTERIOR ENVELOPE
WILL BE DEMOLISHED
EXTERIOR ENVELOPE AT THE BASEMENT WILL REMAIN INTACT.

1 DEMO - BASEMENT FLOOR PLAN
nts



FOR HISTORIC REGULATORY
REVIEW ONLY:
NOT FOR CONSTRUCTION.

McCrummen-Wroe House
2300 WINDSOR ROAD, AUSTIN, TEXAS 78703

HISTORIC REVIEW SET

Revisions

APRIL 8, 2022

Demolition Plans

A0.4

GRASSO GAY
ARCHITECTS
info@grassogay.com office: (512) 913-3057



McCrummen-Wroe House
2300 WINDSOR ROAD, AUSTIN, TEXAS 78703

HISTORIC REVIEW SET

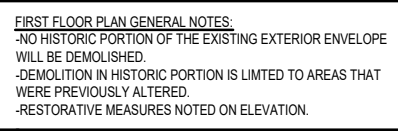
Revisions

APRIL 8, 2022

Demolition Plans

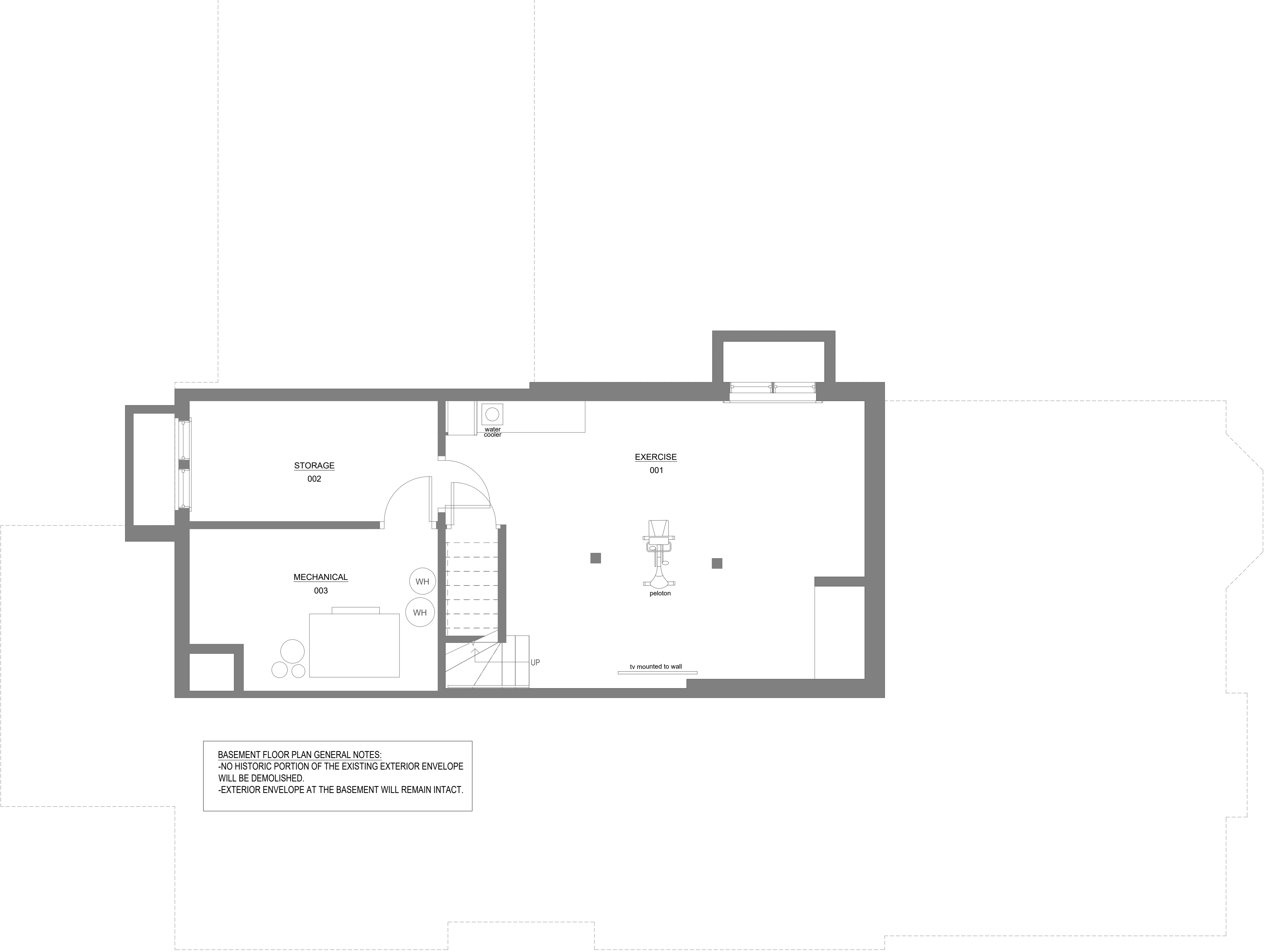
A0.5

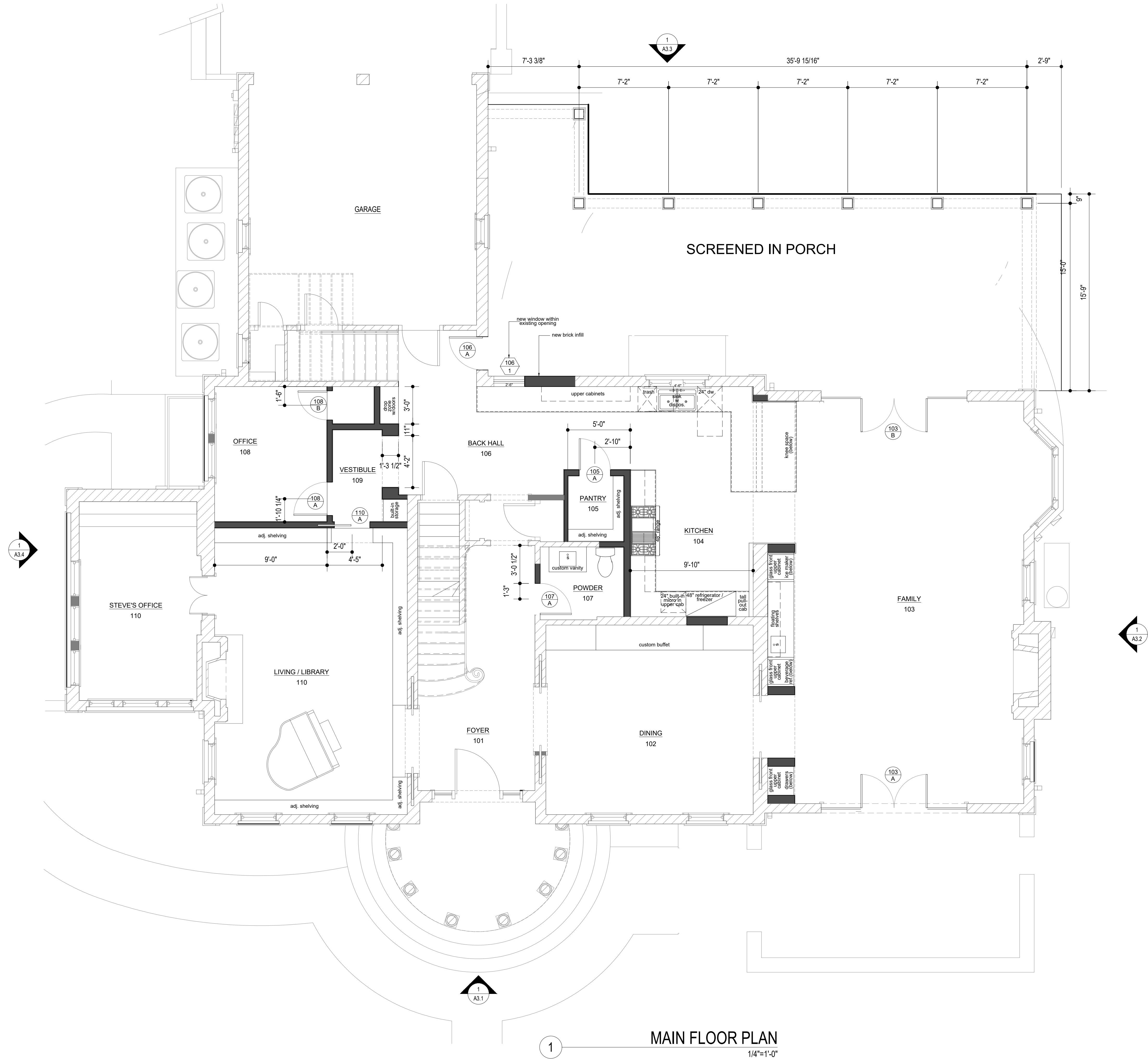
GRASSO GAY
ARCHITECTS
info@grassogay.com office: (512) 913-3057



2 DEMO - FIRST FLOOR PLAN 1/8"=1'-0"







FOR HISTORIC REGULATORY
REVIEW ONLY:
NOT FOR CONSTRUCTION.

McCrummen-Wroe House

2300 WINDSOR ROAD, AUSTIN, TEXAS 78703

HISTORIC REVIEW SET

Revisions

APRIL 8, 2022

Floor Plans

A1.1

GRASSO GAY
ARCHITECTS
info@grassogay.com office: (512) 913-3057



HISTORIC REVIEW SET

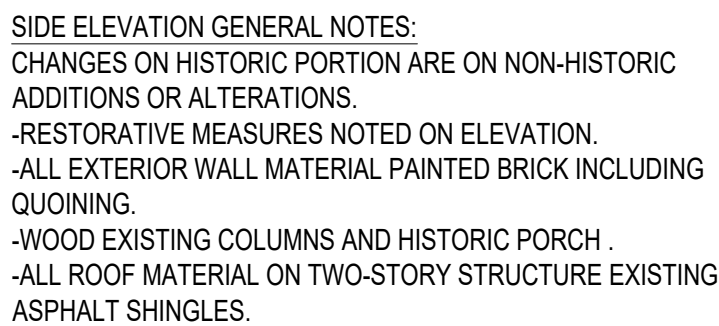
evisions

APRIL 8, 2022

Floor Plans

A1.2

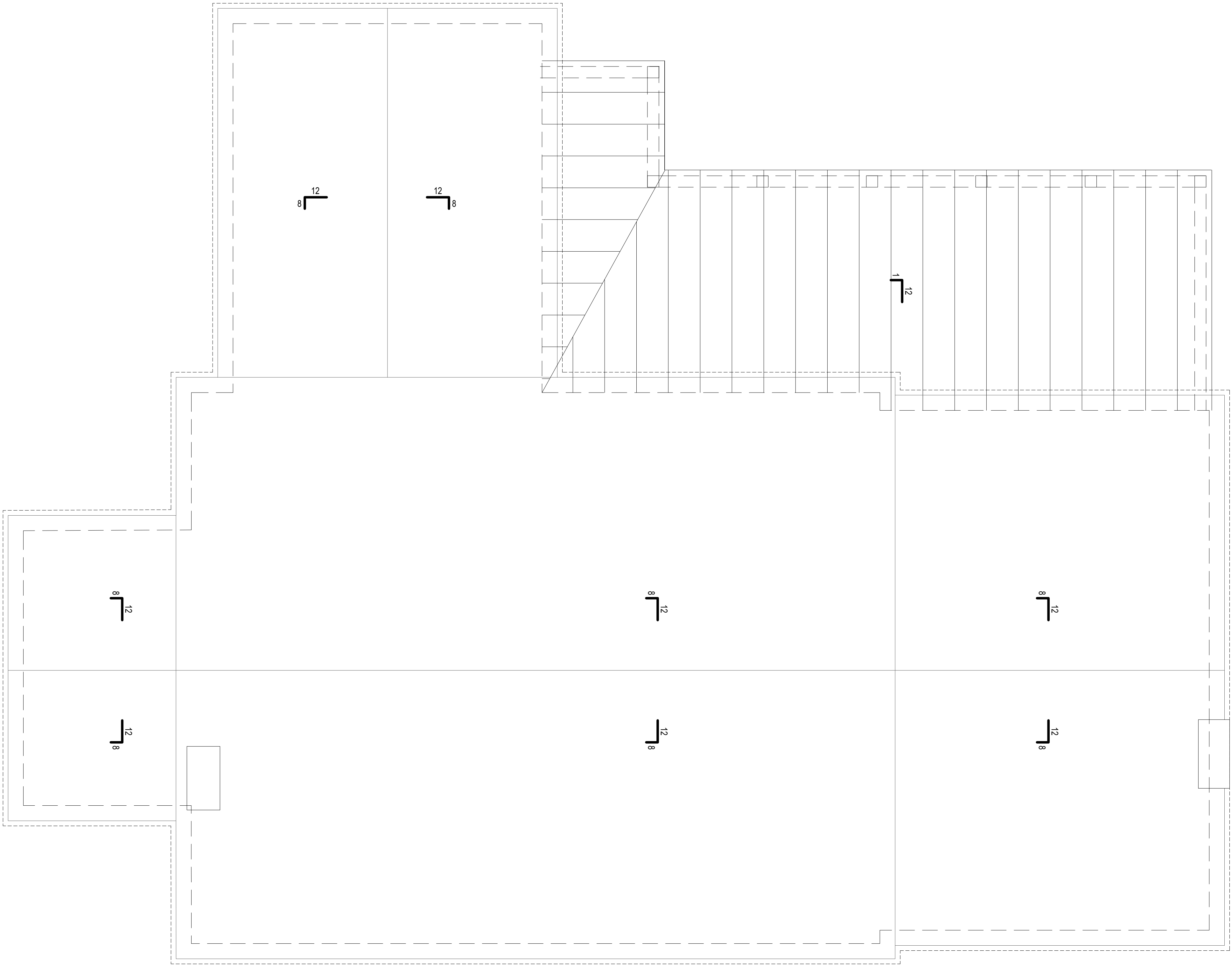
GRASSO GAY
ARCHITECTS
info@grassogay.com office: (512) 913-3057



1

SECOND FLOOR PLAN

$$1/4'' = 1' - 0''$$



1

ROOF PLAN
1/8"=1'-0"

FOR HISTORIC REGULATORY
REVIEW ONLY:
NOT FOR CONSTRUCTION.

McCrummen-Wroe House
2300 WINDSOR ROAD, AUSTIN, TEXAS 78703

Revisions

APRIL 8, 2022
Demo and New
Roof PlanS
A1.3

GRASSO GAY
ARCHITECTS
info@grassogay.com office: (512) 913-3057





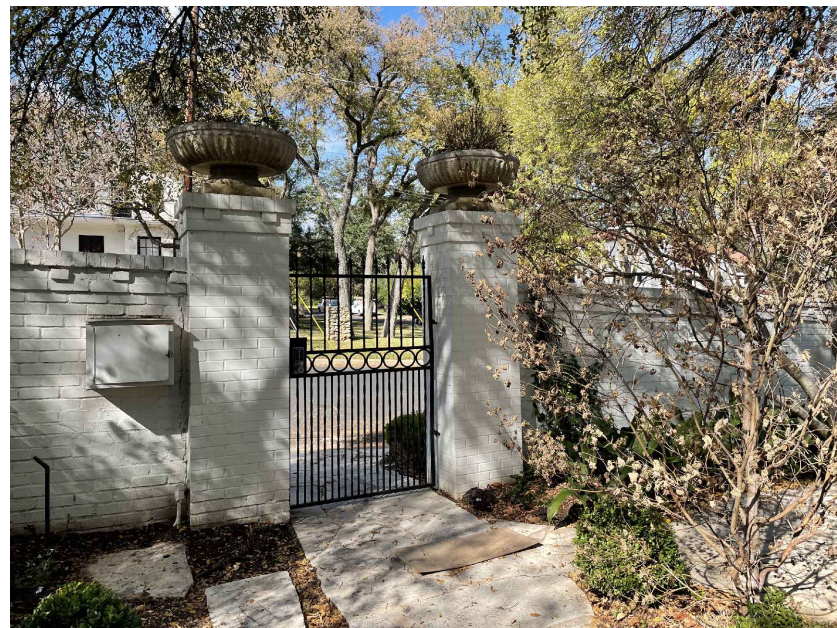
EAST FACING EXTERIOR ELEVATION:
Illustrating Close up of Porch Addition.
Re: Historical Drafted Elevation.



EAST EXTERIOR ELEVATION & PARTIAL NORTH ELEVATION:
Illustrating addition to the left and Historical home on the right.
Re: Historical Drafted Elevation.



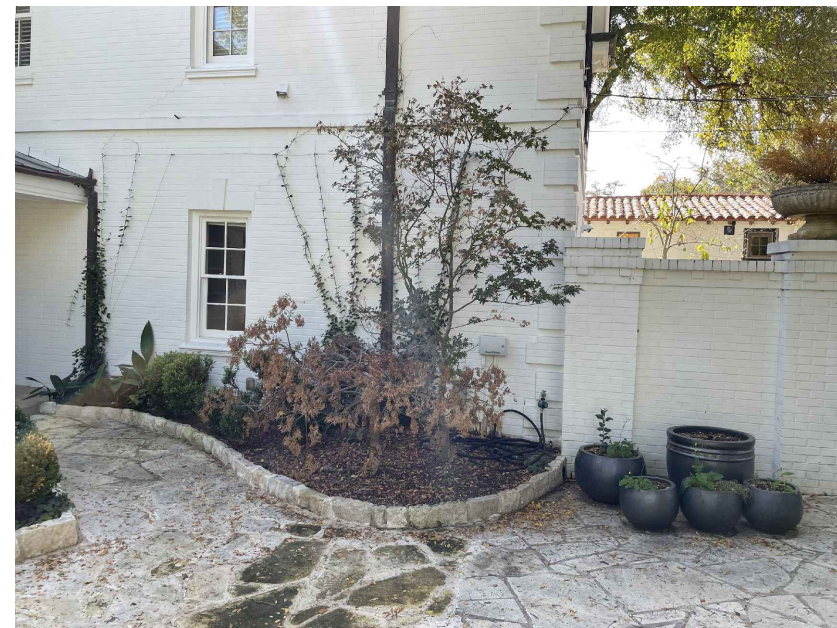
EAST EXTERIOR ELEVATION & PARTIAL NORTH ELEVATION:
Illustrating addition to the left and Historical home on the right.
Re: Historical Drafted Elevation.



HISTORIC STRUCTURE WITH BRICK FENCE WALL.



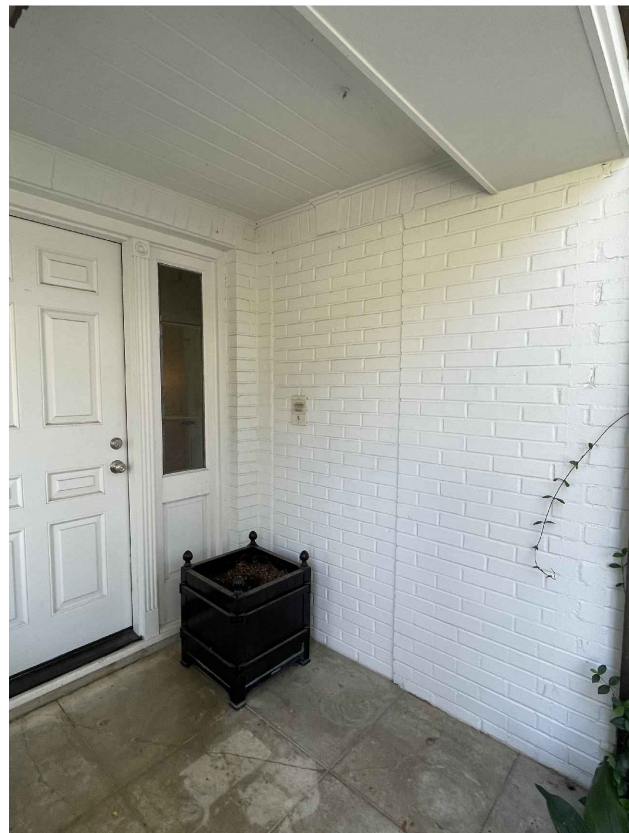
HISTORIC STRUCTURE WITH PORCH ADDITION, BRICK IN-FILLED WALL & DOOR SYSTEM.



HISTORIC STRUCTURE WITH BRICK FENCE WALL.



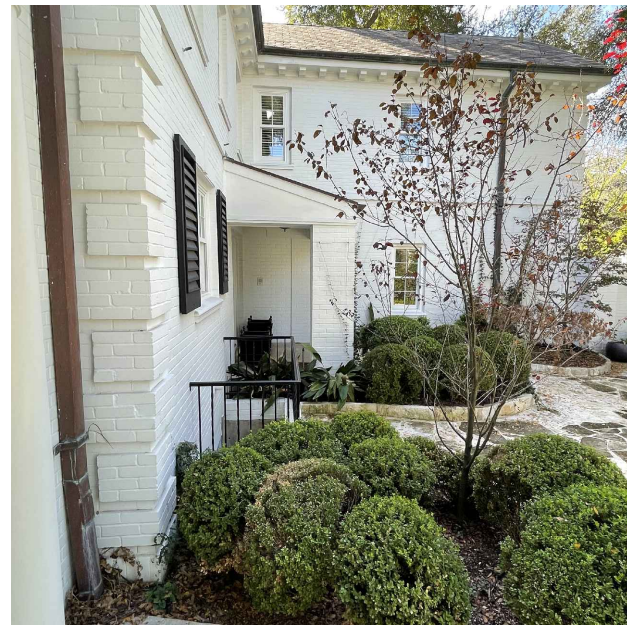
EXISTING PORCH FRONT ELEVATION ON REAR-EAST ELEVATION
Illustrates: Opening under existing brick decorative header.
New window to sit within this opening. Remaining area will be unfilled with brick, but a minor delineation will be left to illustrate infill.



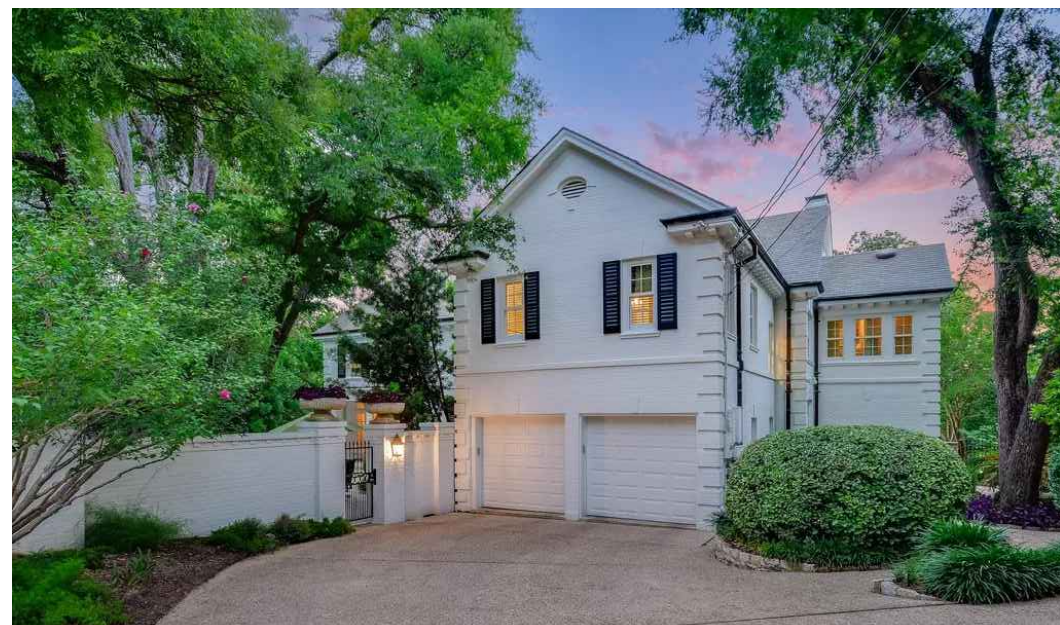
EXISTING PORCH CORNER VIEW EAST & NORTH ELEVATIONS
Illustrates: Two Existing decorative brick headers. One above door system (door system to be demolished) and the other above brick infill (brick infill to be demolished a replaced with a steel door painted to match existing window color to show it is new in material but blend in with color.) re: Cad Exterior elevations and Historical plan for historic opening locations.



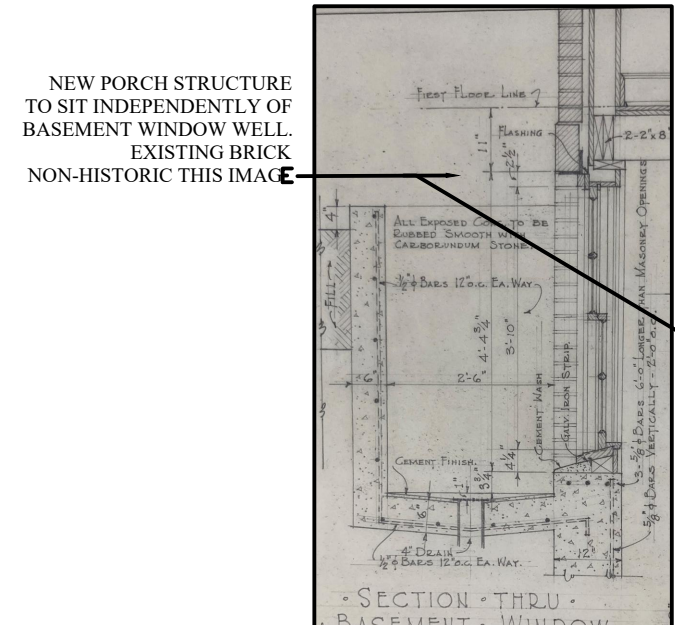
EXISTING PORCH CORNER NORTH ELEVATION
Illustrates: Existing decorative brick header. Above brick infill (brick infill to be demolished a replaced with a steel door painted to match existing window color to show it is new in material but blend in with color.) re: Cad Exterior elevations and Historical plan for historic opening locations.



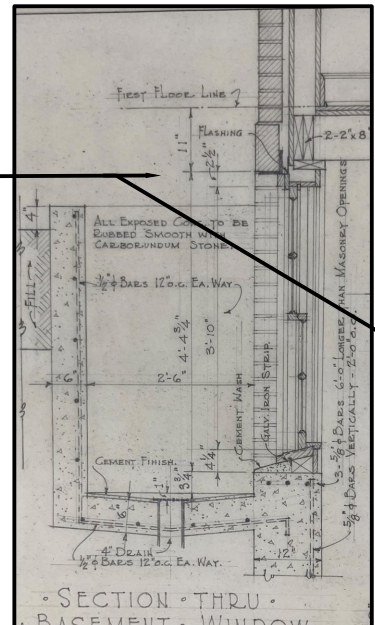
HISTORIC STRUCTURE OVERALL VIEW OF BRICK IN-FILLED WALL.



EXISTING WEST ELEVATION AT GARAGE
Illustrates: Existing non-historic garage doors to be demolished and replaced.



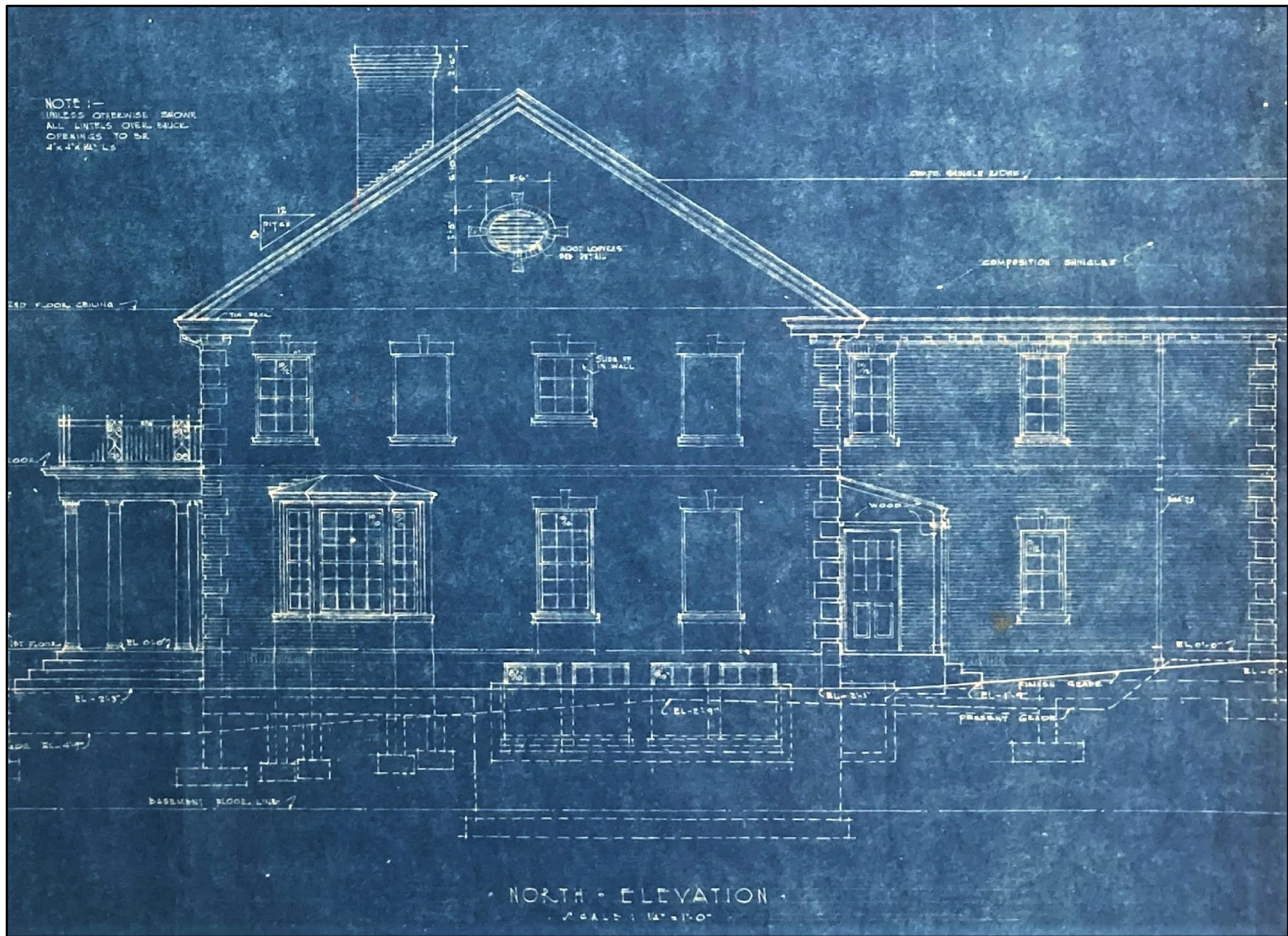
NEW PORCH STRUCTURE TO SIT INDEPENDENTLY OF BASEMENT WINDOW WELL.
EXISTING BRICK NON-HISTORIC THIS IMAGE



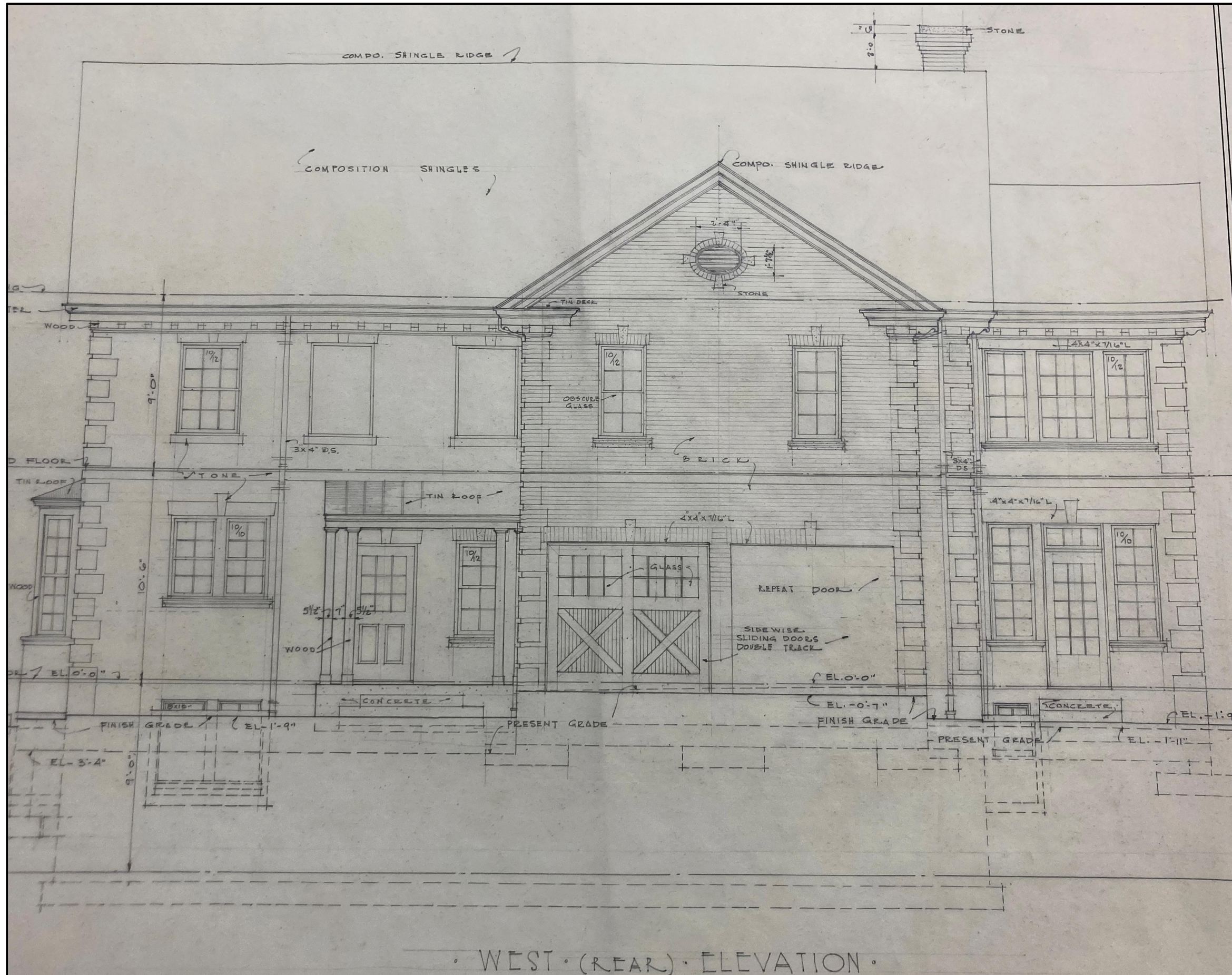
HISTORIC WINDOW WELL
Illustrates: Original hand drafted historic Window well detail.
Image cannot be reproduced or utilized for any other purpose but for Historical Review.



WINDOW WELL DETAIL IMAGE
Illustrates: brick at window well NOT HISTORIC per window well detail on this sheet.



HISTORIC NORTH ELEVATION
Illustrates: Original hand drafted historic elevation of North Elevation.
Historic door to house illustrated. Original porch illustrated but not existent on current house.
Image cannot be reproduced or utilized for any other purpose but for Historical Review.



HISTORIC WEST ELEVATION
Illustrates: Original hand drafted historic elevation of West Elevation.
Image cannot be reproduced or utilized for any other purpose but for Historical Review.

West & South Facing Elevations Historical Drawings and Exiting Photos

Not to Scale



FOR HISTORIC REGULATORY
REVIEW ONLY:
NOT FOR CONSTRUCTION.

McCrummen-Wroe House
2300 WINDSOR ROAD, AUSTIN, TEXAS 78703

HISTORIC REVIEW SET

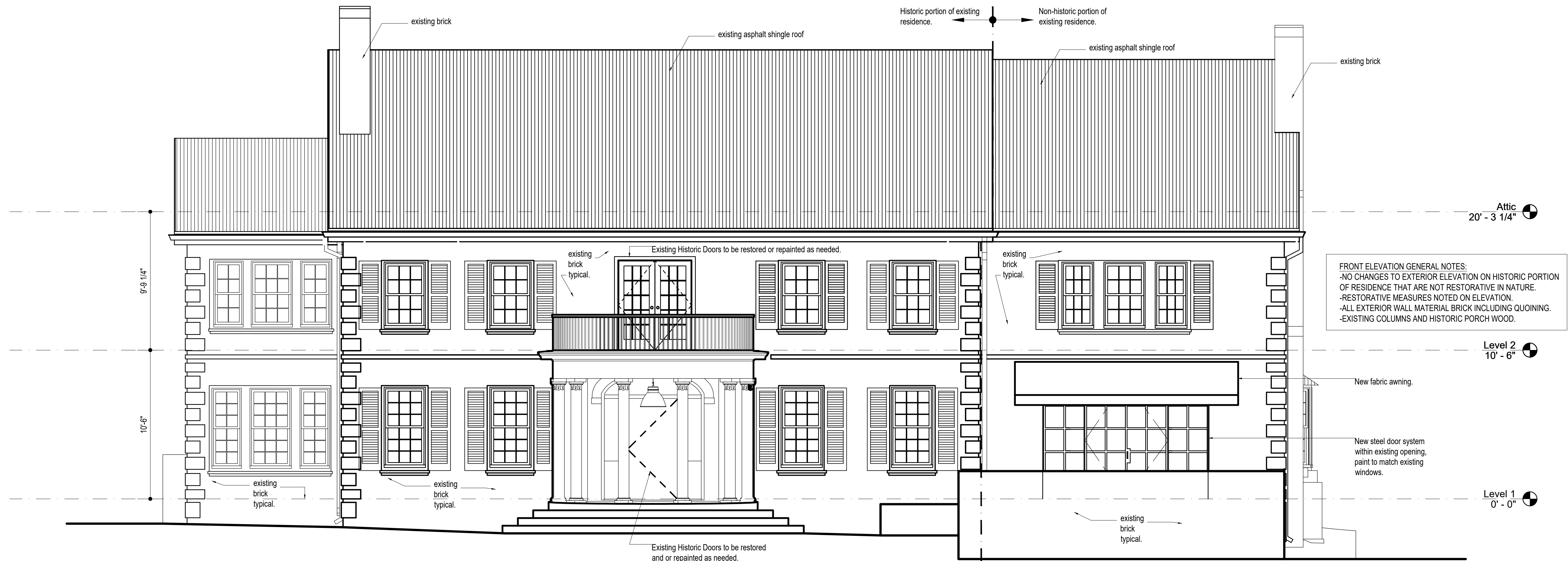
Revisions

APRIL 8, 2022

Exterior Elevations
Imagery

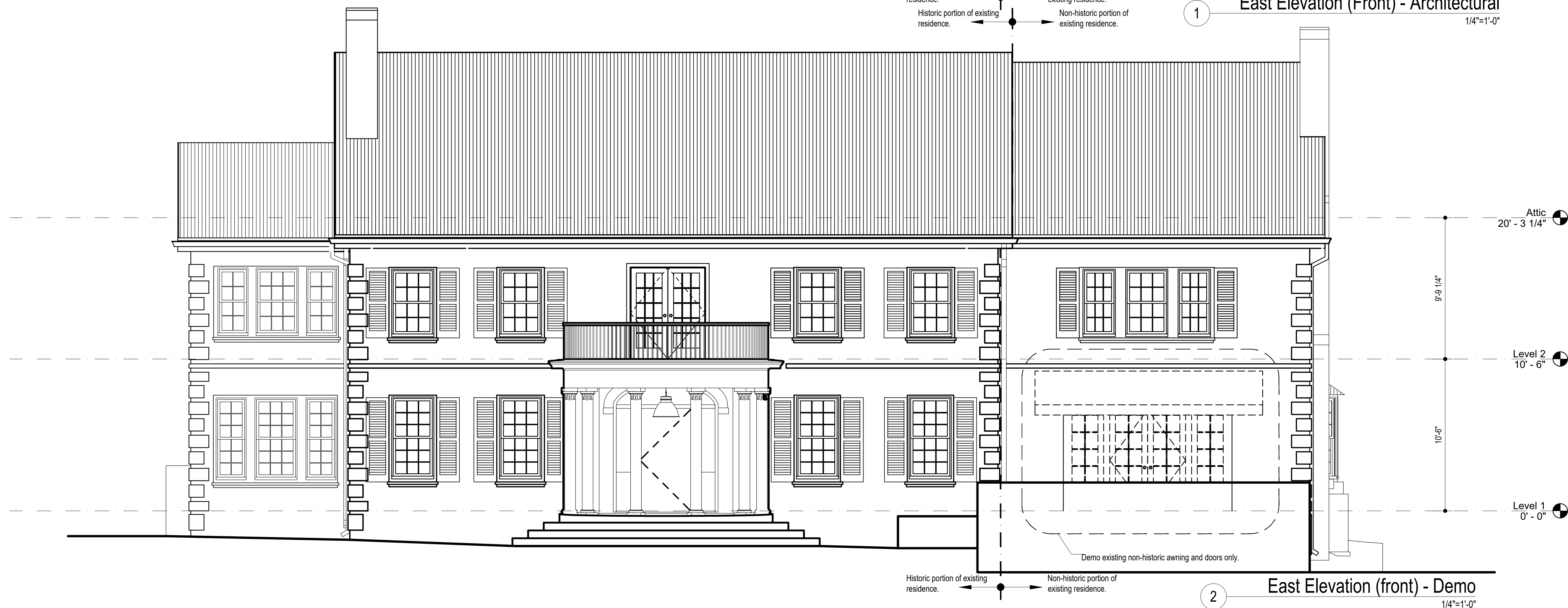
A3.0

GRASSO GAY
ARCHITECTS
info@grassogay.com office: (512) 913-3057



FRONT ELEVATION GENERAL NOTES:
-NO CHANGES TO EXTERIOR ELEVATION ON HISTORIC PORTION OF RESIDENCE THAT ARE NOT RESTORATIVE IN NATURE.
-RESTORATIVE MEASURES NOTED ON ELEVATION.
-ALL EXTERIOR WALL MATERIAL BRICK INCLUDING QUOINING.
-EXISTING COLUMNS AND HISTORIC PORCH WOOD.

East Elevation (Front) - Architectural
1/4"=1'-0"



East Elevation (front) - Demo
1/4"=1'-0"



FOR HISTORIC REGULATORY
REVIEW ONLY:
NOT FOR CONSTRUCTION.

McCrummen-Wroe House
2300 WINDSOR ROAD, AUSTIN, TEXAS 78703

HISTORIC REVIEW SET

Revisions

APRIL 8, 2022

Exterior Elevations

A3.1

GRASSO GAY
ARCHITECTS
info@grassogay.com office: (512) 913-3057



FOR HISTORIC REGULATORY
REVIEW ONLY:
NOT FOR CONSTRUCTION.

McCrummen-Wroe House

2300 WINDSOR ROAD, AUSTIN, TEXAS 78703

HISTORIC REVIEW SET

Revisions

APRIL 8, 2022

Exterior Elevations

A3.2

GRASSO GAY
ARCHITECTS
info@grassogay.com office: (512) 913-3057





West Elevation (Back Yard) - Architectural

1/4"=1'-0"



West Elevation (Back Yard) - Demolition

1/4"=1'-0"



FOR HISTORIC REGULATORY
REVIEW ONLY:
NOT FOR CONSTRUCTION.

McCrummen-Wroe House
2300 WINDSOR ROAD, AUSTIN, TEXAS 78703

HISTORIC REVIEW SET

Revisions

APRIL 8, 2022

Exterior Elevations

A3.3

GRASSO GAY
ARCHITECTS
info@grassogay.com office: (512) 913-3057



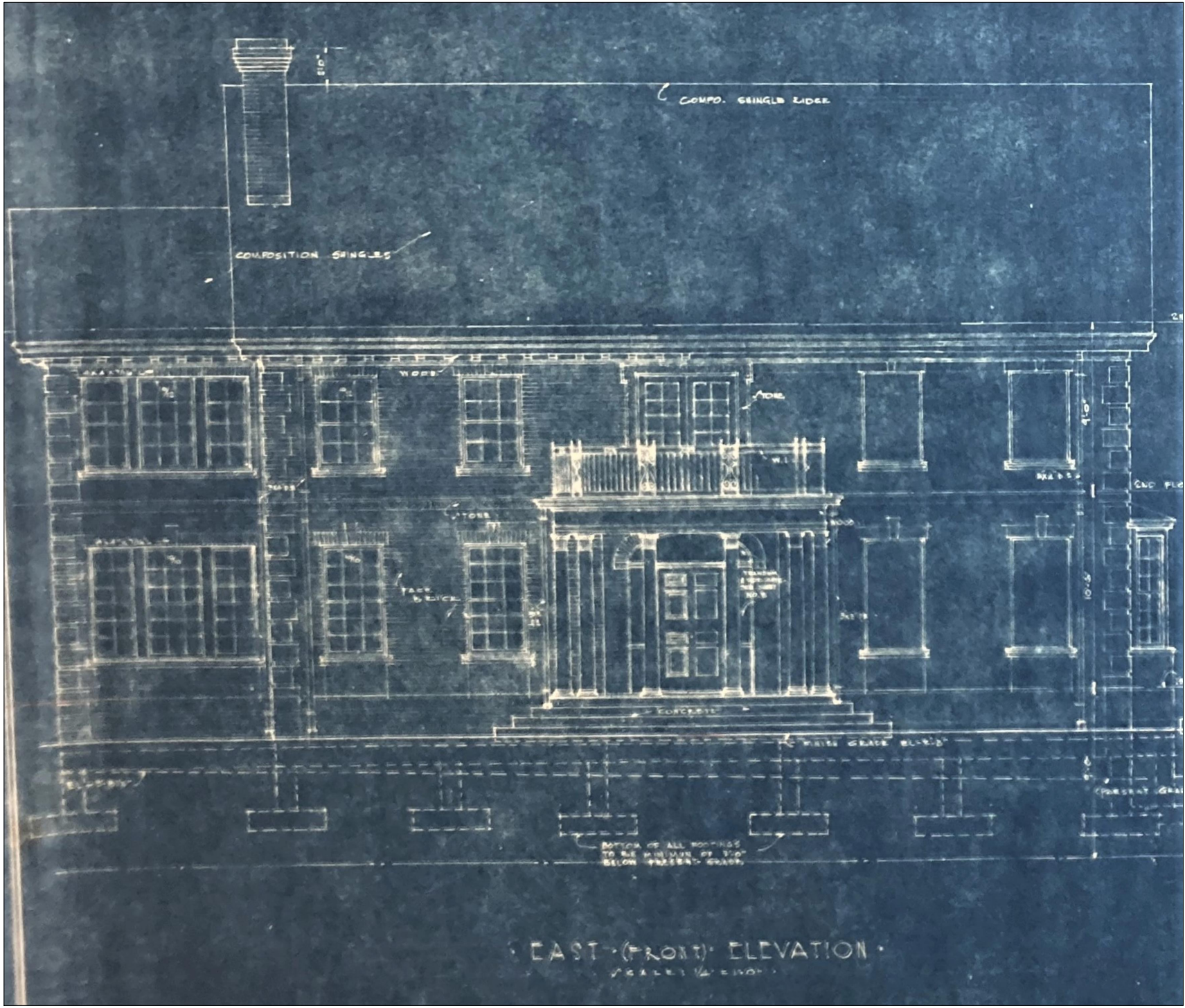
EAST ELEVATION OF HISTORIC PORTION OF ELEVATION.



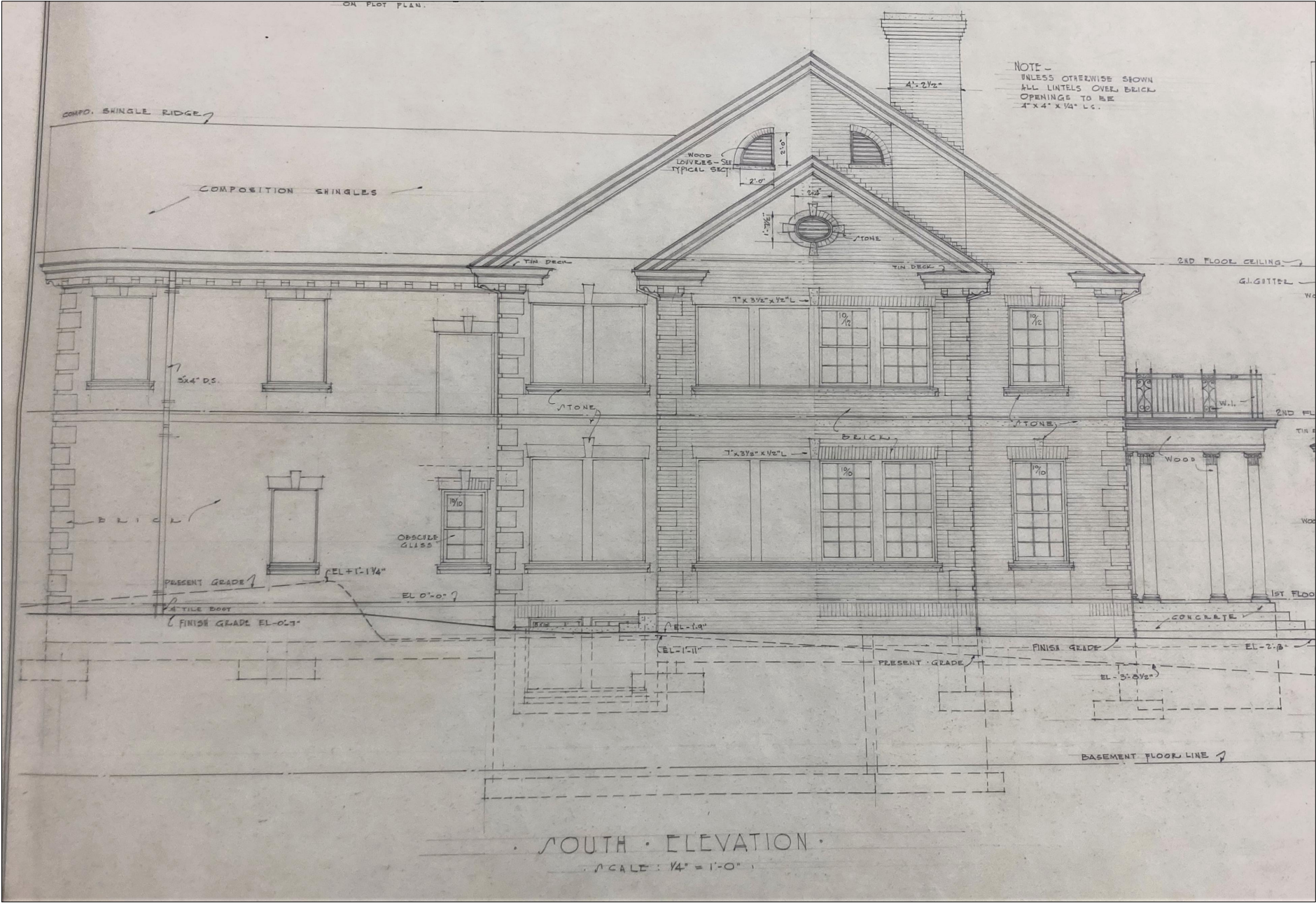
EAST ELEVATION OF HISTORIC PORTION OF ELEVATION WITH ADDITION ON RIGHT.



EAST ELEVATION OF HISTORIC PORTION OF ELEVATION SHOWING LEFT WING.



HISTORIC EAST ELEVATION
Illustrates: Original hand drafted historic elevation of East Elevation. Elevation matches as-built drawings. Only restorative measures to be taken on elevation noted in Demo Elevation.
Image cannot be reproduced or utilized for any other purpose but for Historical Review.



HISTORIC SOUTH ELEVATION
Illustrates: Original hand drafted historic elevation of South Elevation. Elevation matches as-built drawings. No additional changes on this elevation.
Image cannot be reproduced or utilized for any other purpose but for Historical Review.

West & North Historic Elevations - Drawings & Images

1/4"=1'-0"



Sout Elevation (Side) - EXISTING TO REMAIN INTACT

1/4"=1'-0"



FOR HISTORIC REGULATORY
REVIEW ONLY:
NOT FOR CONSTRUCTION.

McCrummen-Wroe House
2300 WINDSOR ROAD, AUSTIN, TEXAS 78703

Revisions

APRIL 8, 2022

Exterior Elevations

A3.4

GRASSO GAY
ARCHITECTS
info@grassogay.com office: (512) 913-3057