



# Old Red River Realignment and Opportunity

Between 12<sup>th</sup> to 15<sup>th</sup> Street



TRANSPORTATION

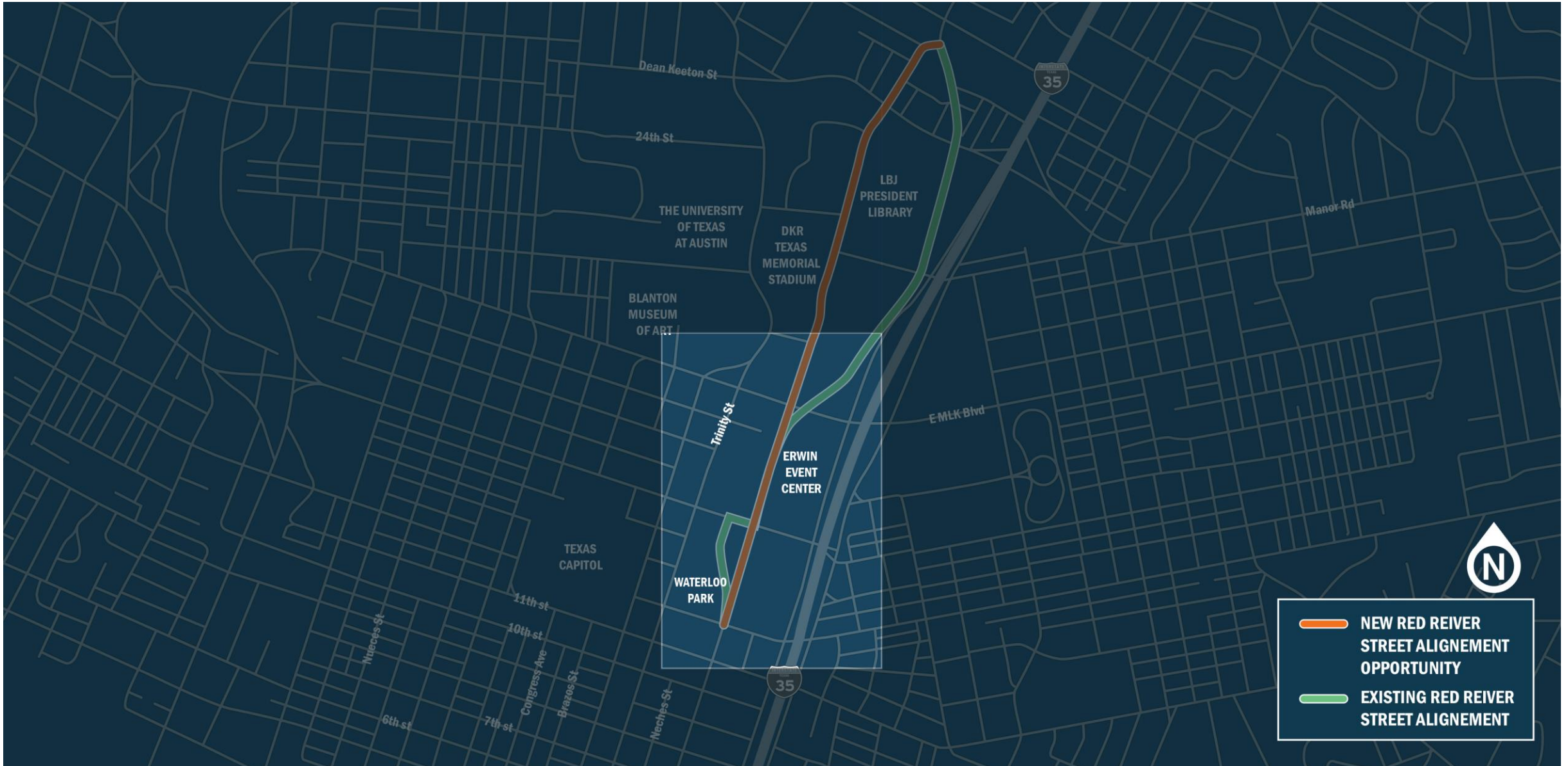


- Accommodate UT Master Plan and Moody Center: Phase 1
- Accommodate Central Health redevelopment: Phase 2

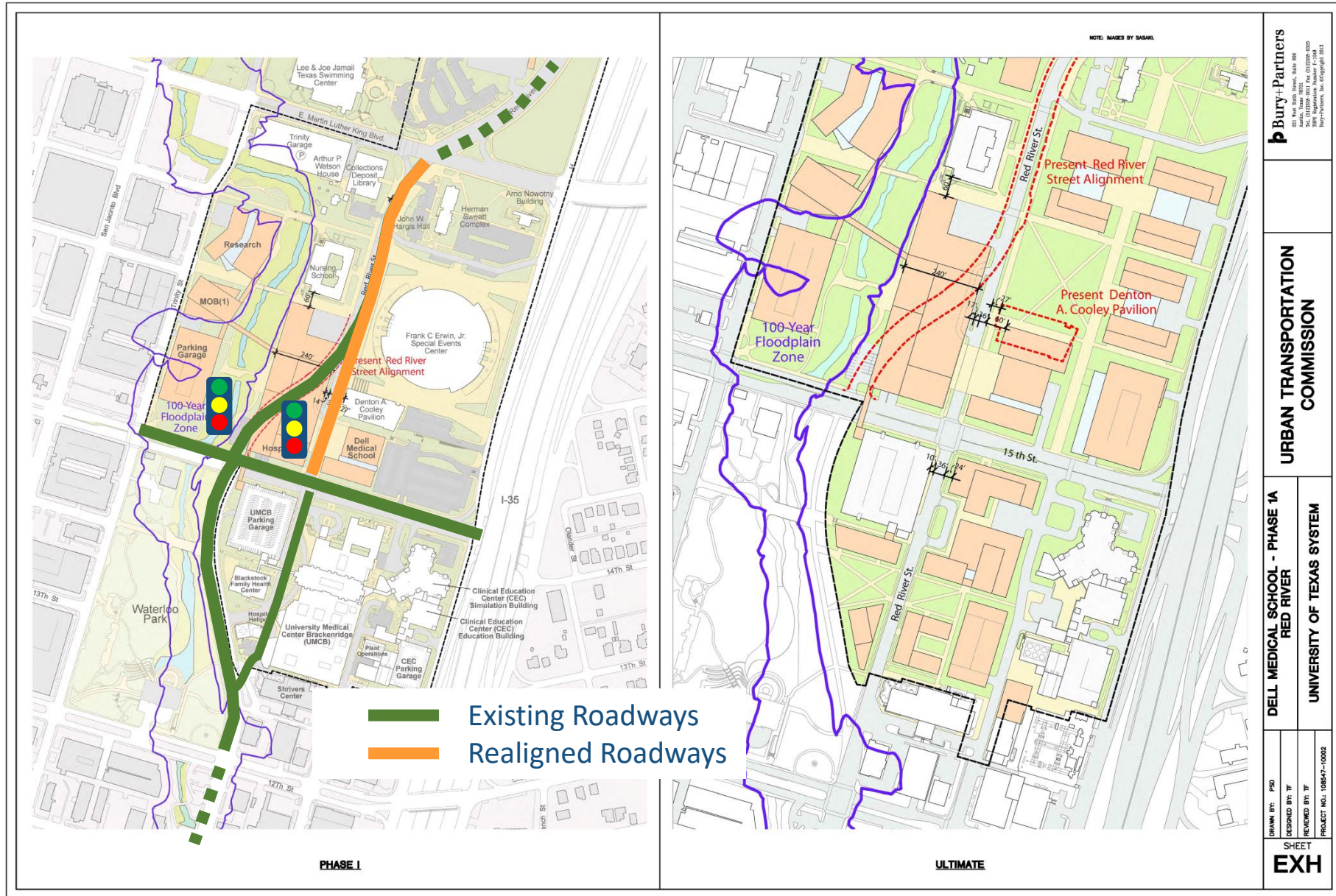




- Phase 1: Realignment of Red River  
MLK Blvd. to 15<sup>th</sup> Street

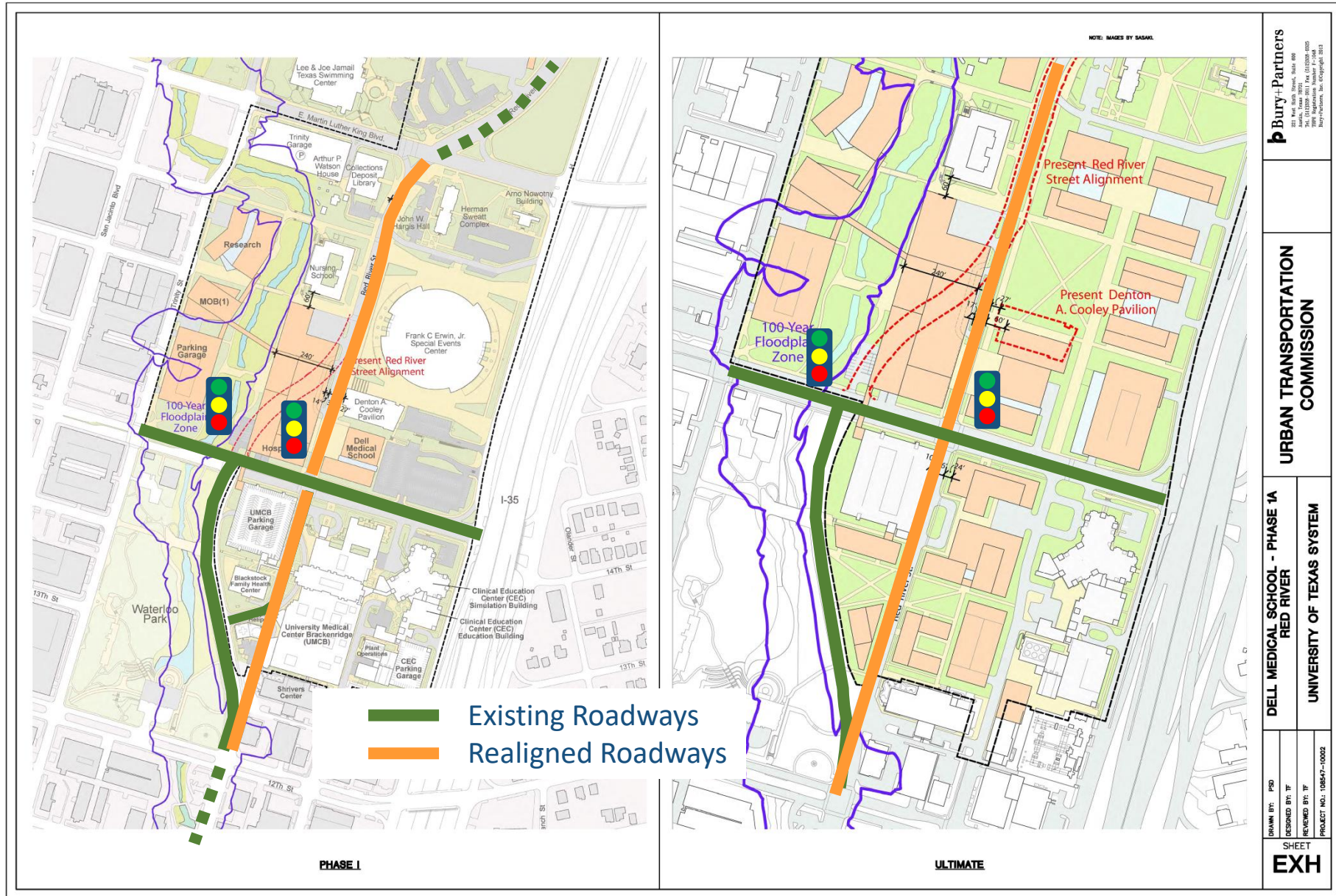






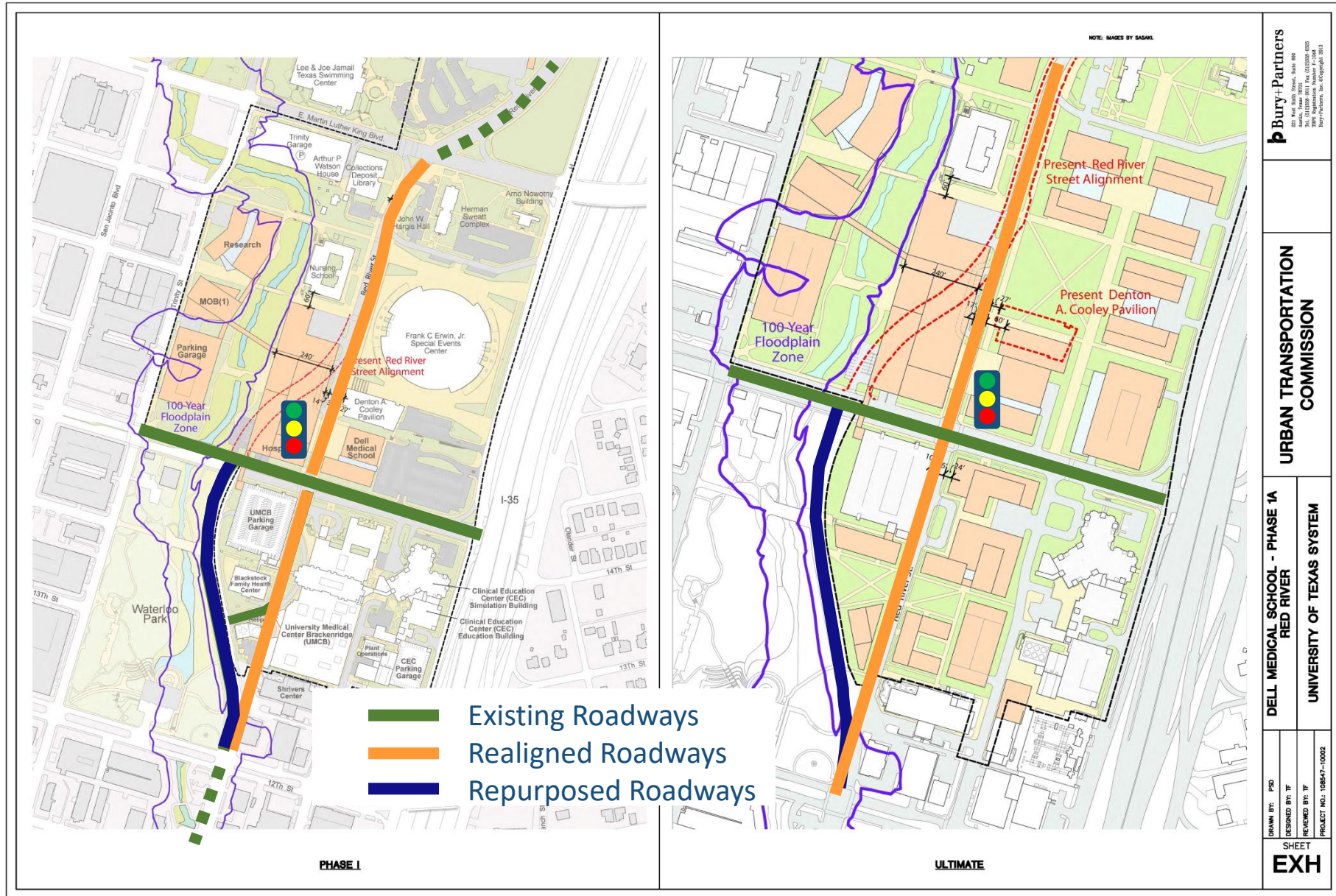
## Phase 1: Realignment of Red River | MLK Blvd. to 15<sup>th</sup> Street DONE

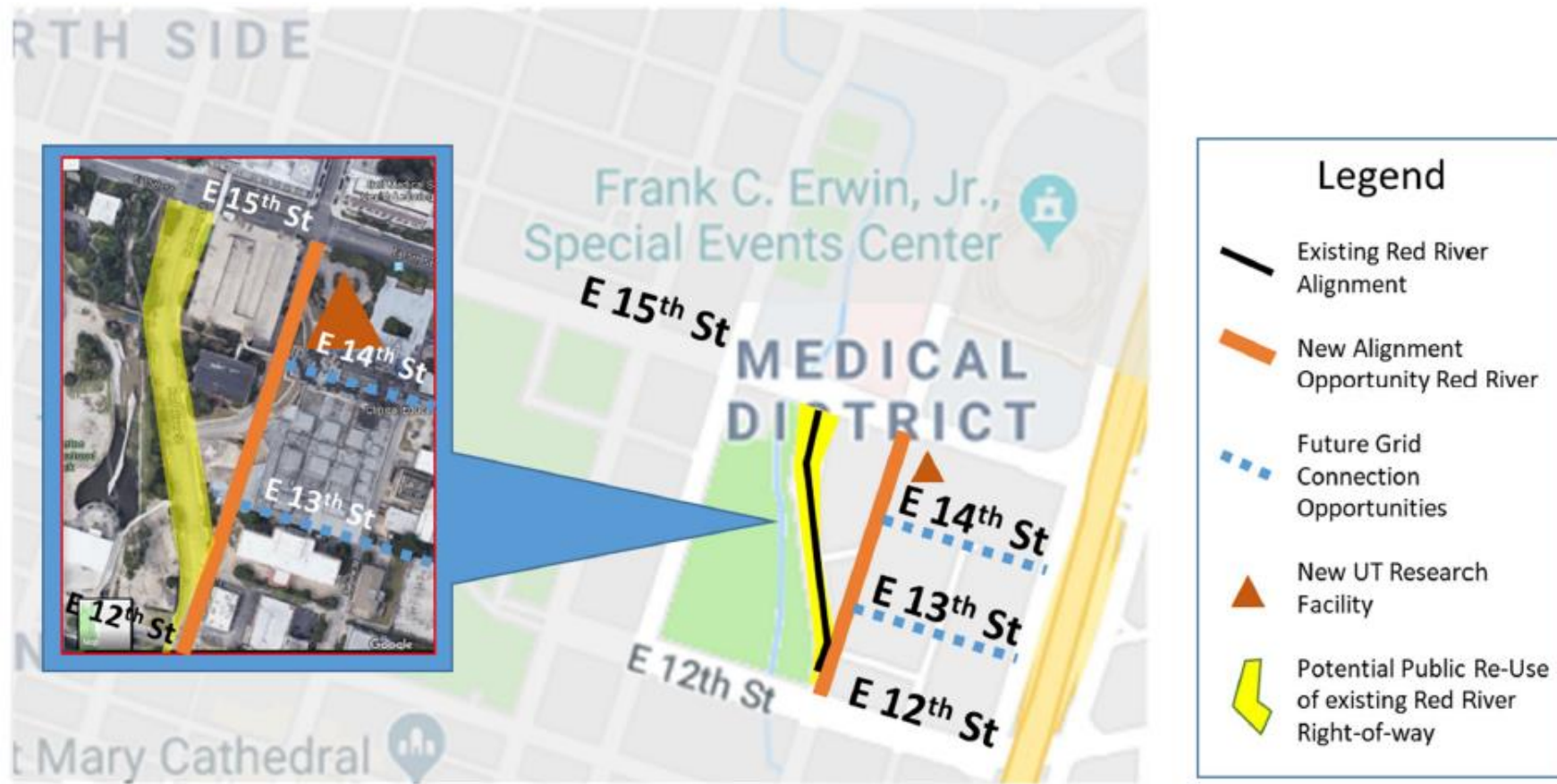




## Phase 2: Realignment of Red River | 12<sup>th</sup> to 15<sup>th</sup> Street THIS ILA







Realignment of Red River 12<sup>th</sup> to 15<sup>th</sup> Street



# New Red River Alignment

- Red River Street returned to historic alignment
- Ownership and operation of New Red River remains City of Austin
- New Red River constructed, and utilities relocated by CH as part of their Block 164 campus redevelopment
- Achieves a complete street design
  - Transit (enhanced to accommodate future HC routes)
  - Pedestrian (enhanced)
  - Bikes (enhanced)
  - Autos (emphasis reduced)
- Most of Old Red River Street remains City of Austin for future pedestrian plaza/promenade



Progress Photo: March 31, 2022



# New Red River Alignment

- Red River Street returned to historic alignment
- Ownership and operation of New Red River remains City of Austin
- New Red River constructed, and utilities relocated by CH as part of their Block 164 campus redevelopment
- Achieves a complete street design
  - Transit (enhanced to accommodate future HC routes)
  - Pedestrian (enhanced)
  - Bikes (enhanced)
  - Autos (emphasis reduced)
- Most of Old Red River Street remains City of Austin for future pedestrian plaza/promenade

## Next Steps

- Central Health anticipates completion of Block 164 and New Red River Street construction in spring/summer 2022
- ATD staff to work with Central Health, Waterloo Greenway, other City departments, and public to transition Old Red River Street to a plaza/pedestrian-oriented amenity



# Future Council Items

- Approve ROW reimbursement (ORES)
  - Vacation of 0.35 AC of Old Red River ROW to CH
- Approve WPD's \$75k contribution for requested enhanced storm-water drainage

## Prior Council Actions:

- Negotiate & execute approval [February 7, 2019](#)
- Statement of Terms approved [June 20, 2019](#)
- Right-of-way fee waivers NTE \$3.3M approved [December 3, 2020](#)
- Central Health PUD zoning case approved [June 10, 2021](#)



## Future Council Items

- Approve ROW reimbursement (ORES)
  - Vacation of 0.35 AC of Old Red River ROW to CH
- Approve WPD's \$75k contribution for requested enhanced storm-water drainage

### Prior Council Actions:

- Negotiate & execute approval February 7, 2019
- Statement of Terms approved June 20, 2019
- Right-of-way fee waivers NTE \$3.3M approved December 3, 2020
- Central Health PUD zoning case approved June 10, 2021

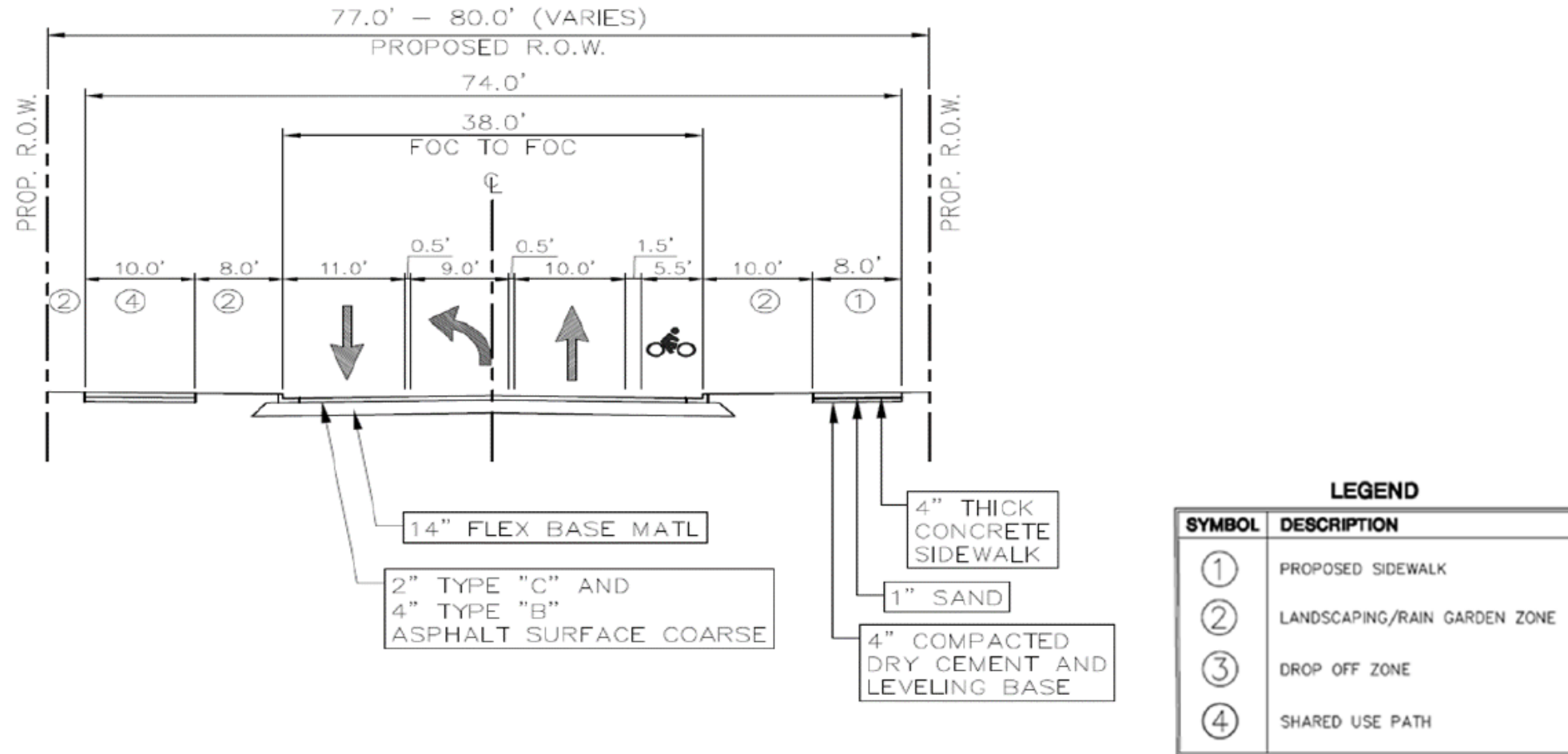
## UT Moody Center

- UT anticipates reopening the IH-35 SB shoulder for bicycle/pedestrian connectivity around the construction area mid-April





# Proposed Typical Section From The Approved Site Plan SP-2019-0332D



**December 2021**  
**New Red River | Looking North**



**December 2021**  
**New Red River | Looking South**



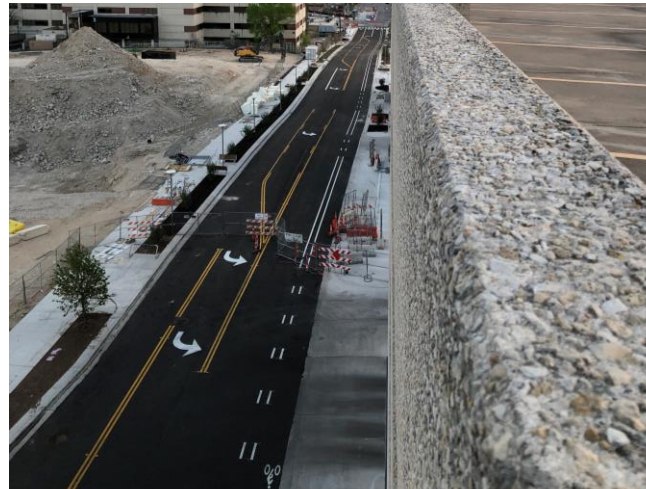
**March 2022**  
**Drone Progress Photo**



**April 2022**  
**New Red River Striping | North**



**April 2022 - New Red River**  
**Striping | South**

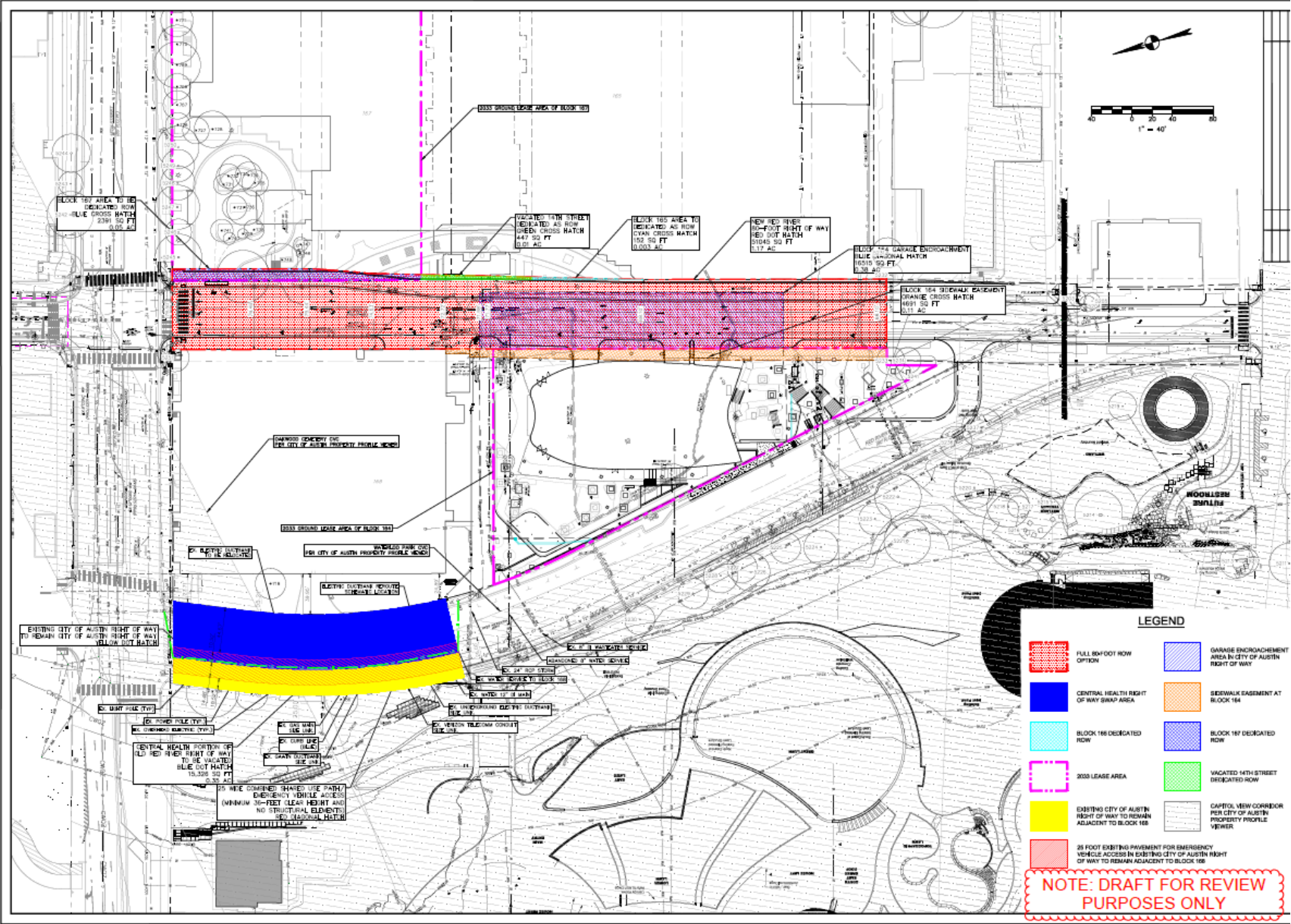


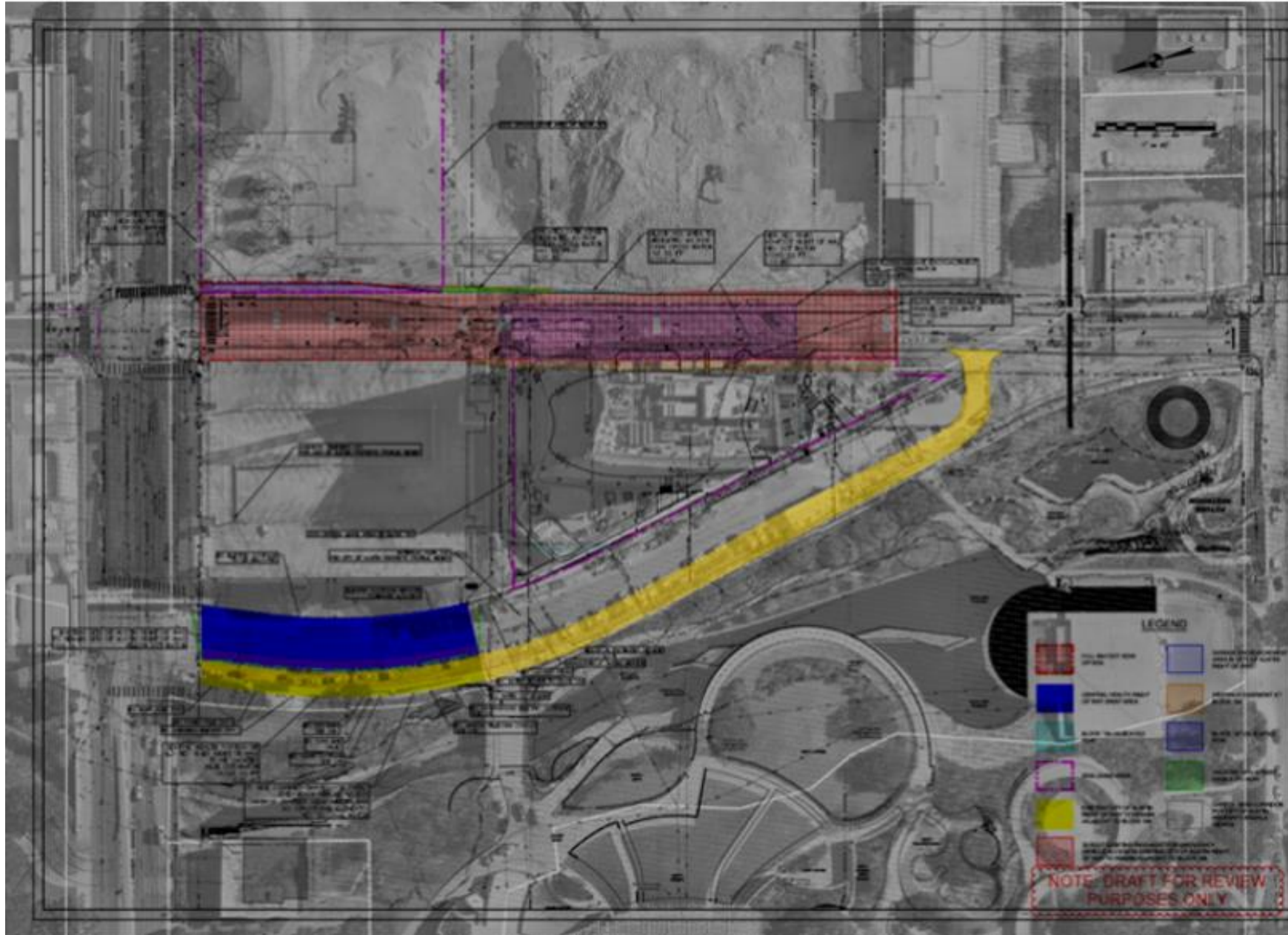
Physical improvements will be completed in April/May 2022; closeout and ROW dedication will follow. Legal opening planned for summer 2022.

**Bryant Bell, P.E. | Senior Project Manager | GarzaEMC**



# Realignment of Red River 12<sup>th</sup> to 15<sup>th</sup> Street





## Phase I: Interim Short-Term Public Plaza

Regulate and maintain accessible walkable and shared mobility public plaza

Design and implement collapsible bollard blockade near 12<sup>th</sup> and 15<sup>th</sup> street

Provide emergency vehicle access with an unobstructed ROW width of no less than 25 feet.

Site Systems Assessment of existing infrastructure



Phase I:  
Interim Short-Term Public Plaza



## Phase II:

### **Community Engagement Process / Conceptual Design**

#### Document Existing Conditions- Collaborate

- Community engagement #1; collect community and targeted stakeholder input on concerns, desires, and preferences.
- Programming/input session: (1) general public, targeted stakeholder and city executive input session.

#### Design Alternatives - Collaborate

- Community engagement #2; share aesthetic design concepts; development of no more than (3) alternative concepts based on information gathered from community and targeted stakeholder feedback. (1) community and targeted stakeholder input session.

#### Design Alternatives - Collaborate

- Community engagement #3; Present draft conceptual plan, collect feedback, and incorporate features into design concept.





### Phase III: **Long-Term Public Plaza**

RFP for qualified licensed professionals to provide all necessary planning, design, cost estimating and engineering services necessary to refine conceptual design through PS&E services.



**Thank You**







# Old Red River Realignment and Opportunity

Between 12<sup>th</sup> to 15<sup>th</sup> Street



TRANSPORTATION

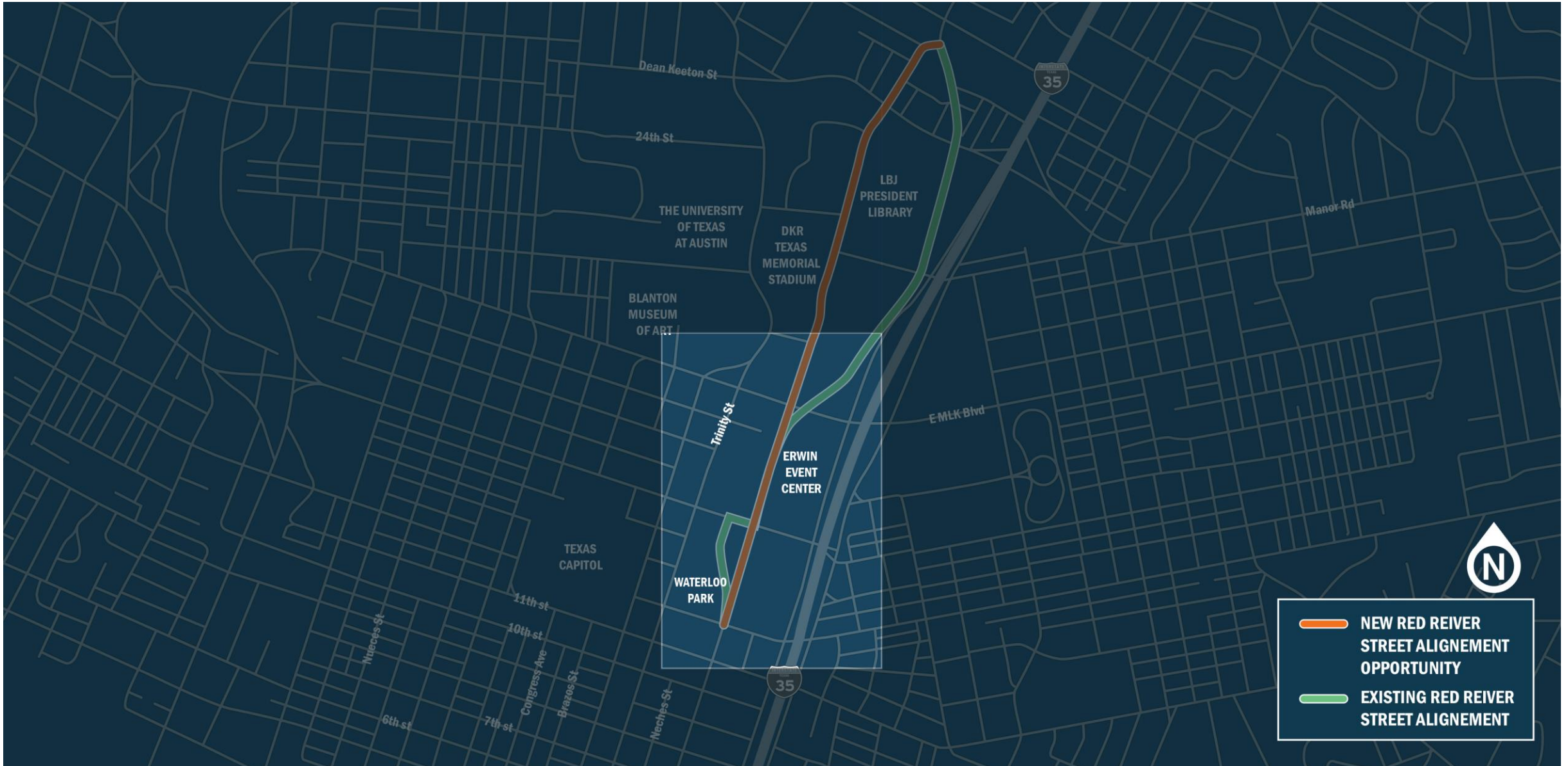


- Accommodate UT Master Plan and Moody Center: Phase 1
- Accommodate Central Health redevelopment: Phase 2

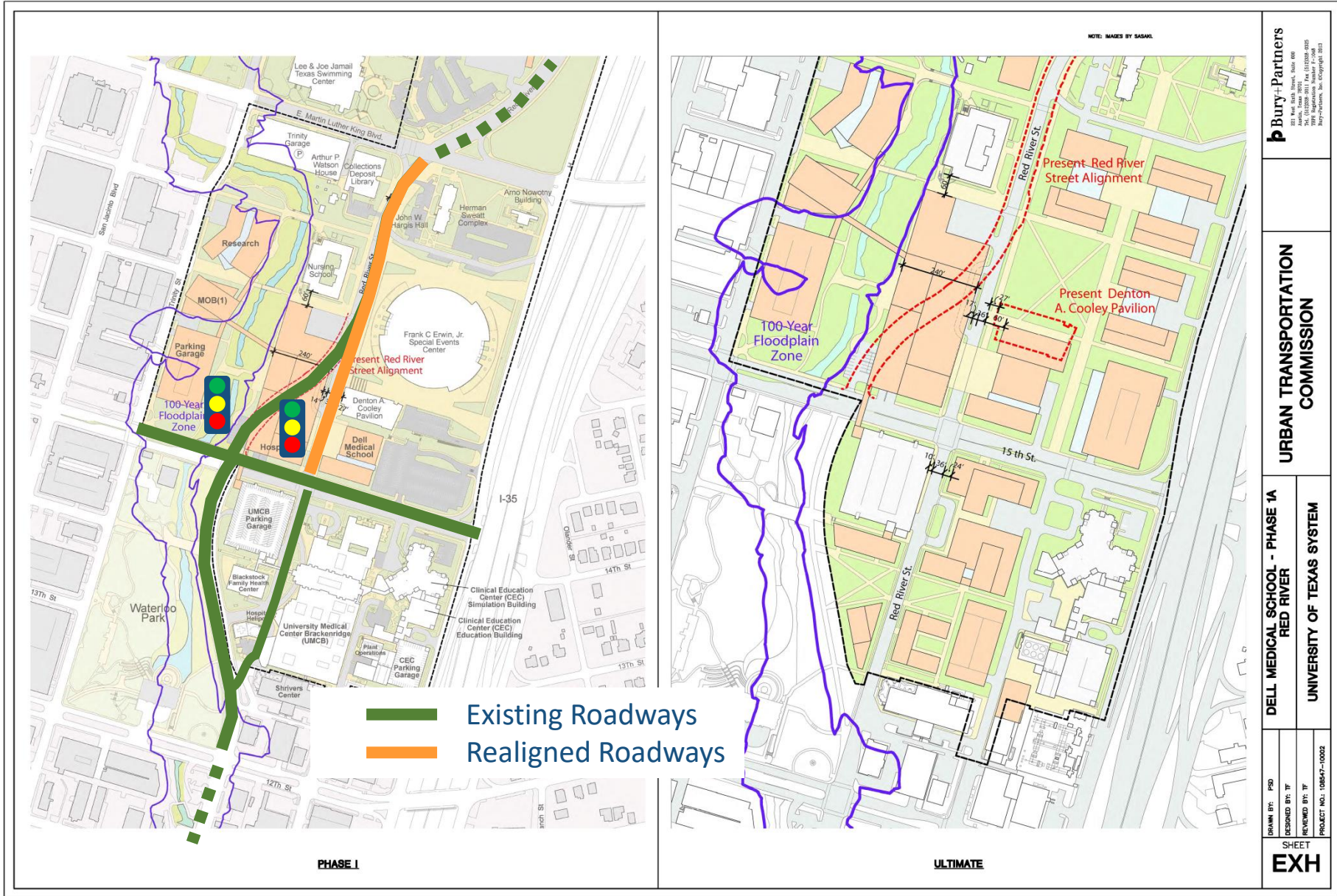




- Phase 1: Realignment of Red River  
MLK Blvd. to 15<sup>th</sup> Street

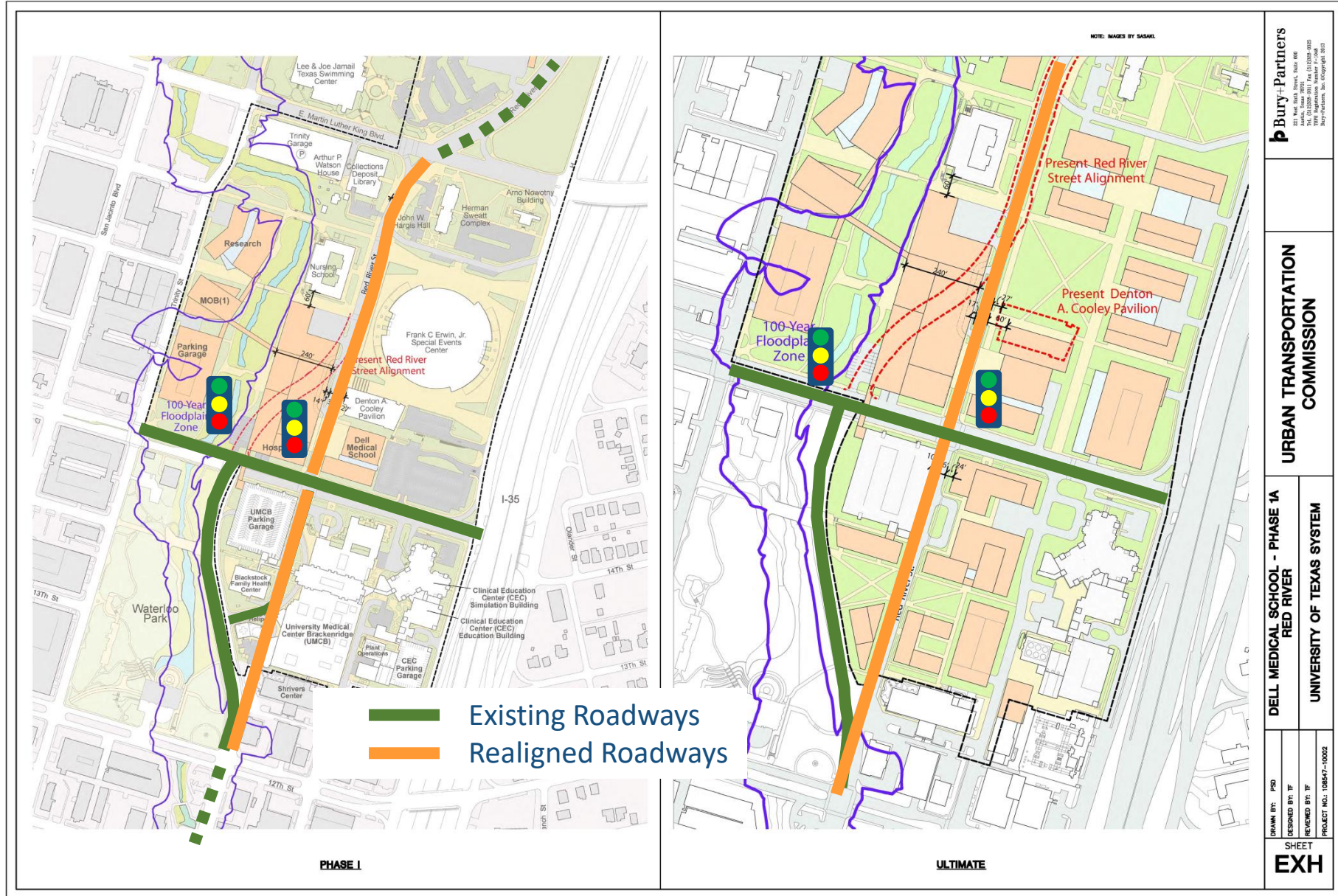






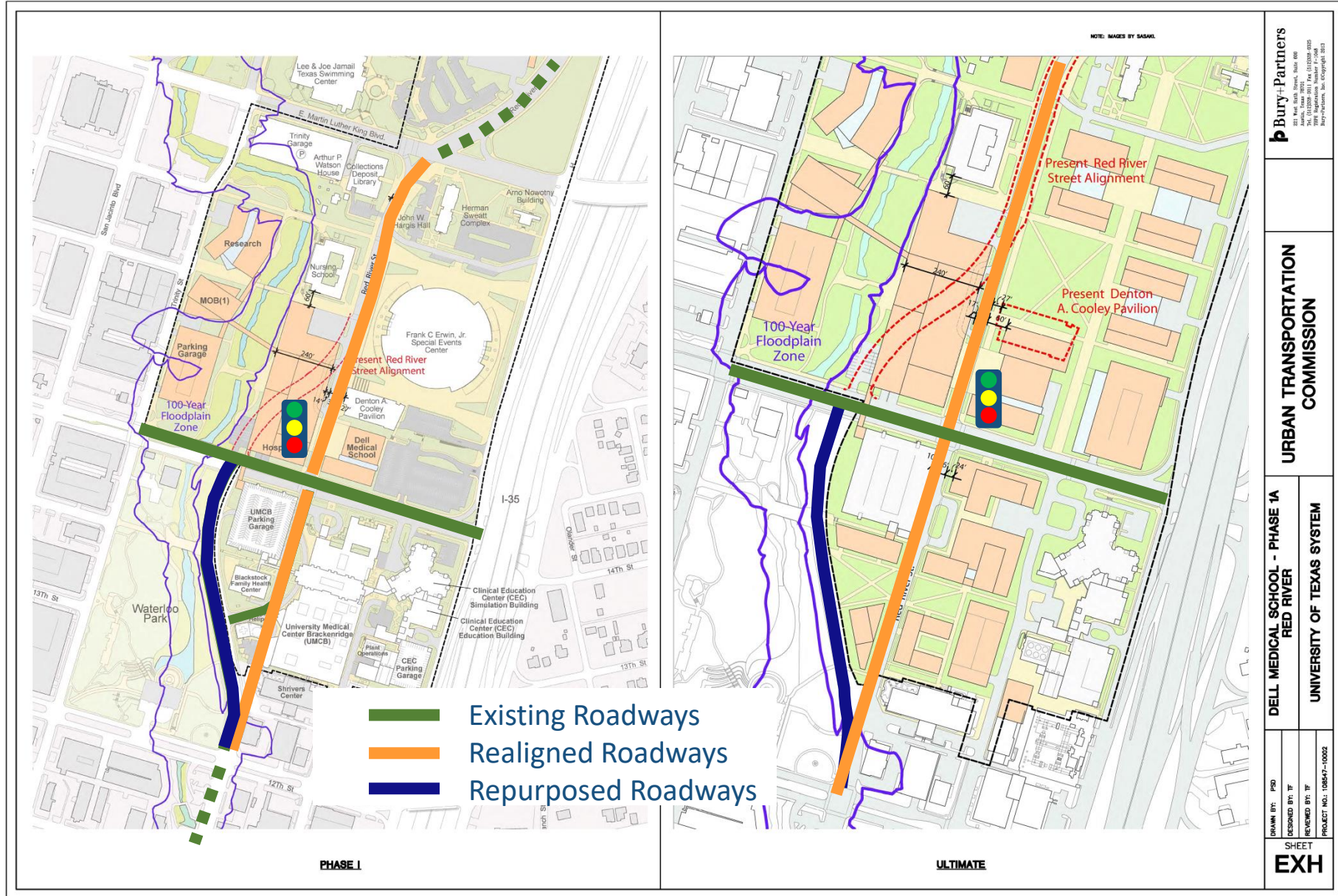
Phase 1: Realignment of Red River | MLK Blvd. to 15<sup>th</sup> Street DONE





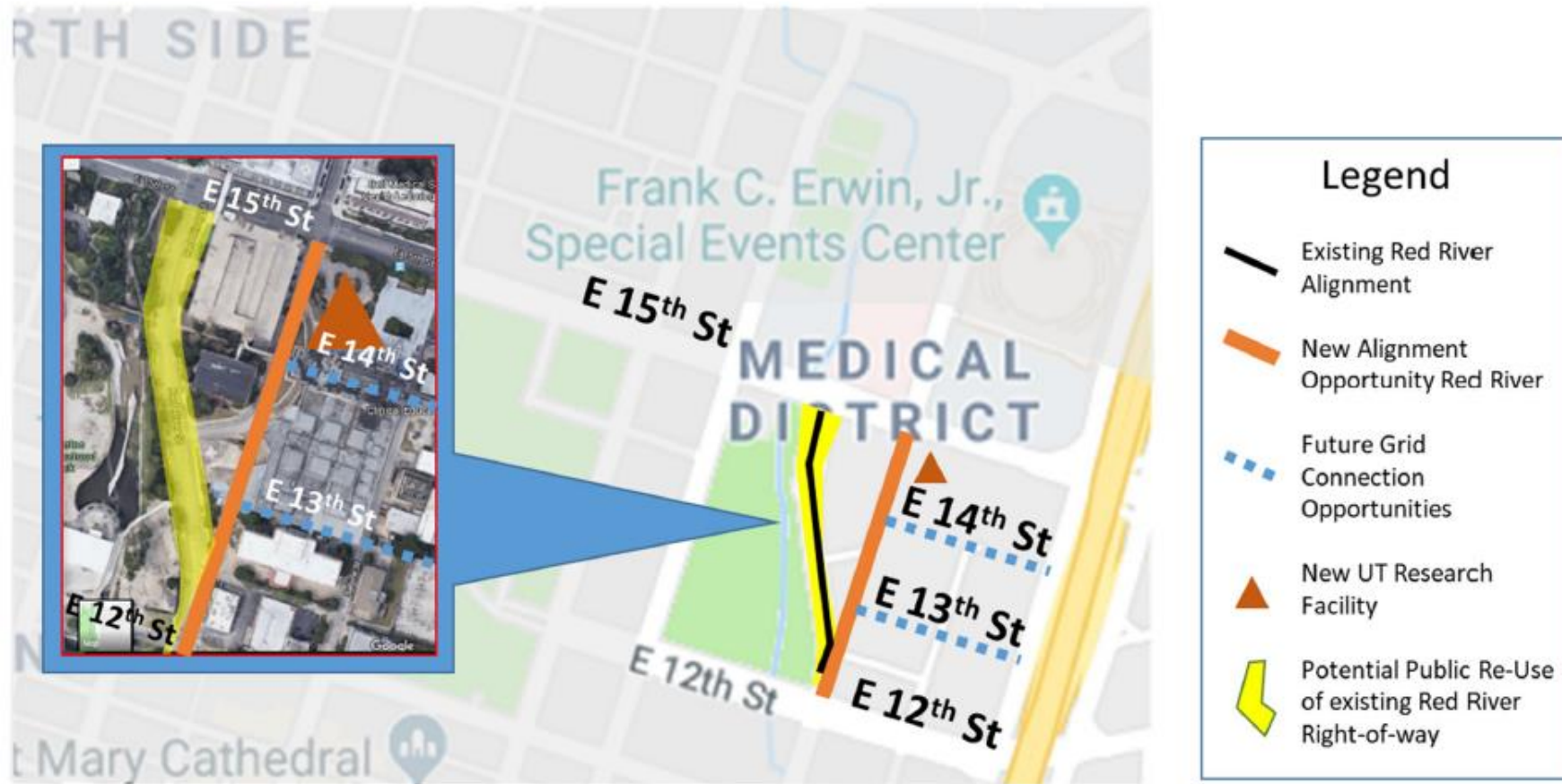
Phase 2: Realignment of Red River | 12<sup>th</sup> to 15<sup>th</sup> Street THIS ILA





Phase 2: Realignment of Red River | 12<sup>th</sup> to 15<sup>th</sup> Street THIS ILA





Realignment of Red River 12<sup>th</sup> to 15<sup>th</sup> Street

# New Red River Alignment

- Red River Street returned to historic alignment
- Ownership and operation of New Red River remains City of Austin
- New Red River constructed, and utilities relocated by CH as part of their Block 164 campus redevelopment
- Achieves a complete street design
  - Transit (enhanced to accommodate future HC routes)
  - Pedestrian (enhanced)
  - Bikes (enhanced)
  - Autos (emphasis reduced)
- Most of Old Red River Street remains City of Austin for future pedestrian plaza/promenade



Progress Photo: March 31, 2022



# New Red River Alignment

- Red River Street returned to historic alignment
- Ownership and operation of New Red River remains City of Austin
- New Red River constructed, and utilities relocated by CH as part of their Block 164 campus redevelopment
- Achieves a complete street design
  - Transit (enhanced to accommodate future HC routes)
  - Pedestrian (enhanced)
  - Bikes (enhanced)
  - Autos (emphasis reduced)
- Most of Old Red River Street remains City of Austin for future pedestrian plaza/promenade

## Next Steps

- Central Health anticipates completion of Block 164 and New Red River Street construction in spring/summer 2022
- ATD staff to work with Central Health, Waterloo Greenway, other City departments, and public to transition Old Red River Street to a plaza/pedestrian-oriented amenity

# Future Council Items

- Approve ROW reimbursement (ORES)
  - Vacation of 0.35 AC of Old Red River ROW to CH
- Approve WPD's \$75k contribution for requested enhanced storm-water drainage

## Prior Council Actions:

- Negotiate & execute approval [February 7, 2019](#)
- Statement of Terms approved [June 20, 2019](#)
- Right-of-way fee waivers NTE \$3.3M approved [December 3, 2020](#)
- Central Health PUD zoning case approved [June 10, 2021](#)



## Future Council Items

- Approve ROW reimbursement (ORES)
  - Vacation of 0.35 AC of Old Red River ROW to CH
- Approve WPD's \$75k contribution for requested enhanced storm-water drainage

### Prior Council Actions:

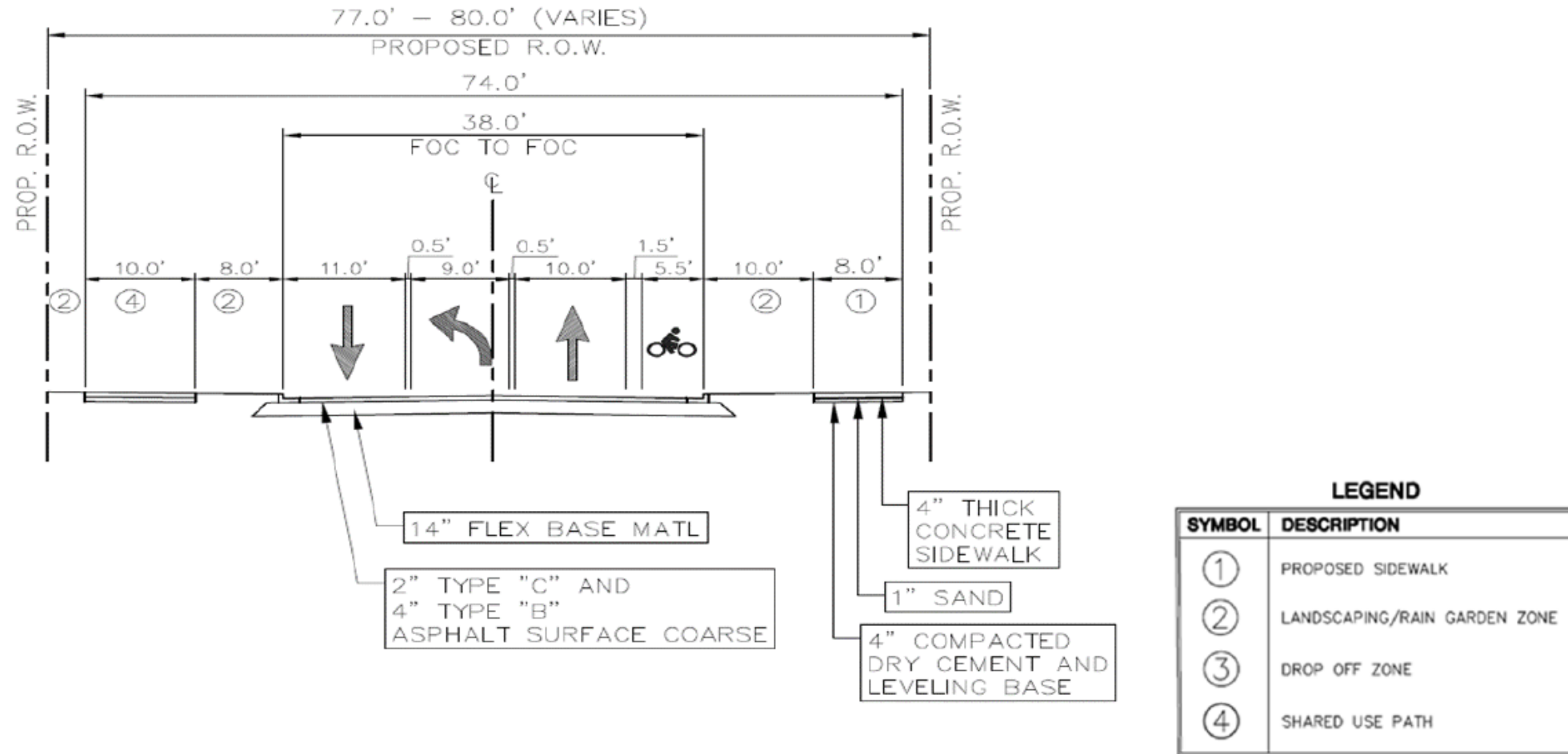
- Negotiate & execute approval February 7, 2019
- Statement of Terms approved June 20, 2019
- Right-of-way fee waivers NTE \$3.3M approved December 3, 2020
- Central Health PUD zoning case approved June 10, 2021

## UT Moody Center

- UT anticipates reopening the IH-35 SB shoulder for bicycle/pedestrian connectivity around the construction area mid-April



# Proposed Typical Section From The Approved Site Plan SP-2019-0332D





**December 2021**  
**New Red River | Looking North**



**December 2021**  
**New Red River | Looking South**



**March 2022**  
**Drone Progress Photo**



**April 2022**  
**New Red River Striping | North**



**April 2022 - New Red River**  
**Striping | South**

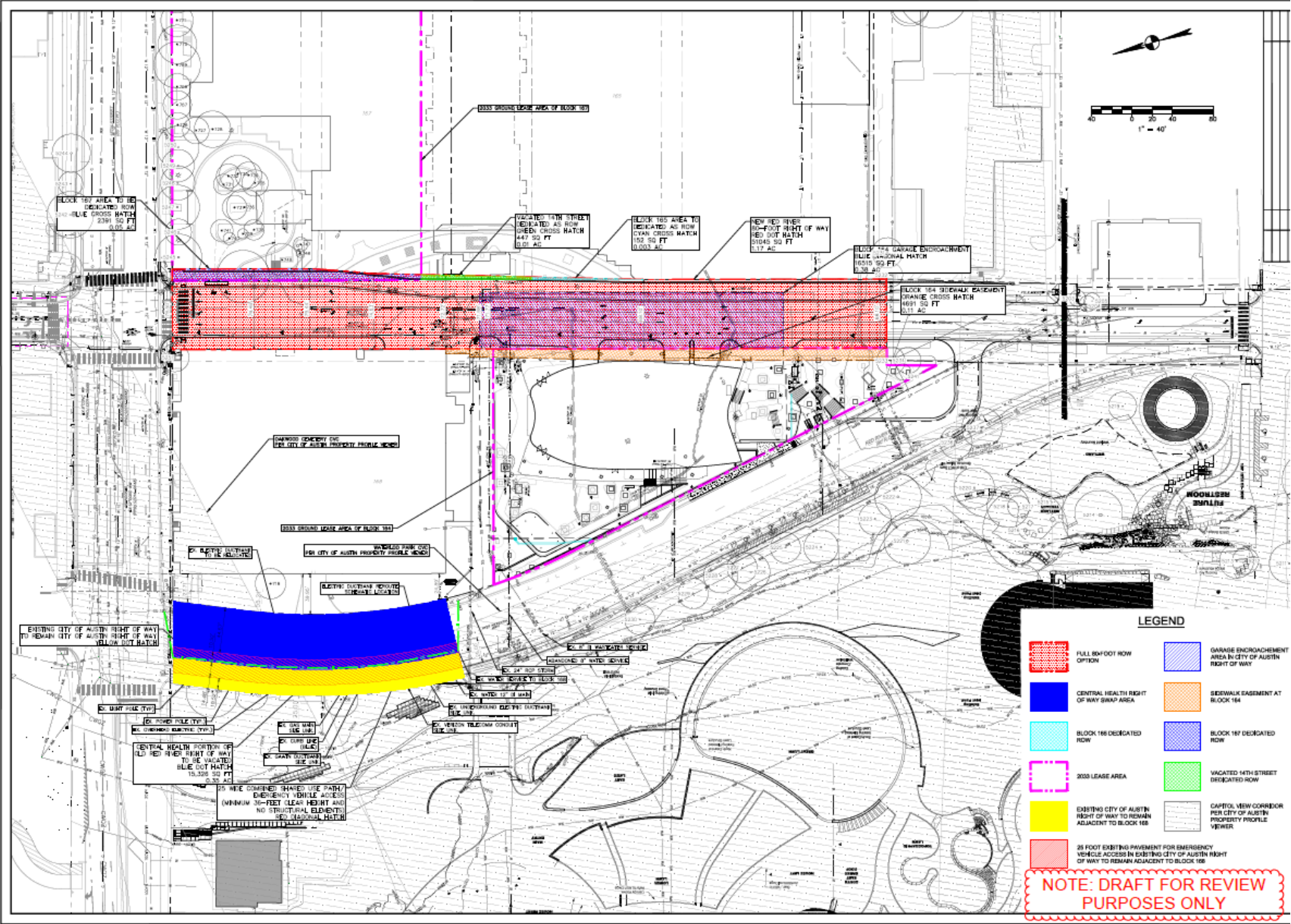


Physical improvements will be completed in April/May 2022; closeout and ROW dedication will follow. Legal opening planned for summer 2022.

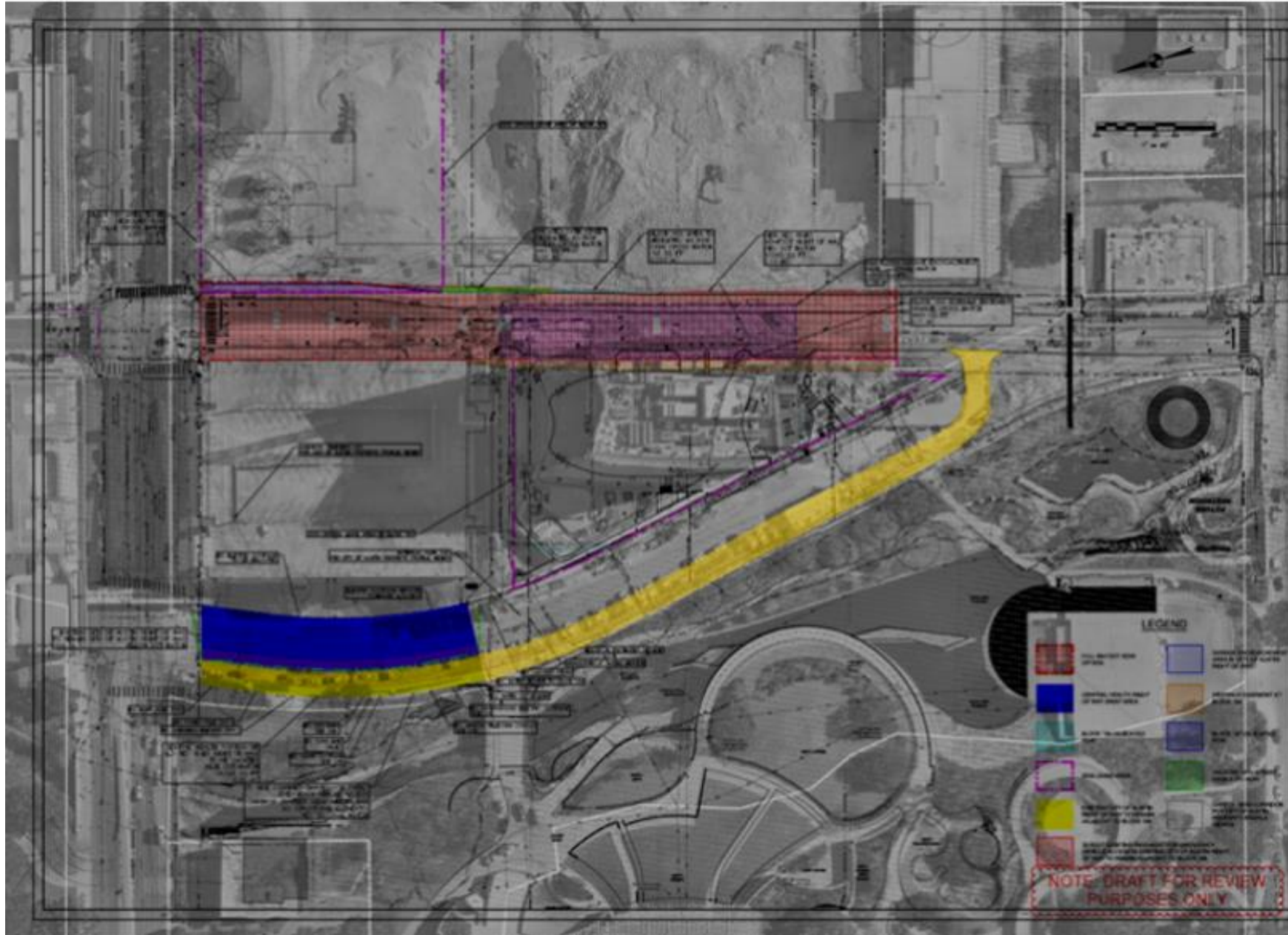
**Bryant Bell, P.E. | Senior Project Manager | GarzaEMC**



# Realignment of Red River 12<sup>th</sup> to 15<sup>th</sup> Street







## Phase I: Interim Short-Term Public Plaza

Regulate and maintain accessible walkable and shared mobility public plaza

Design and implement collapsible bollard blockade near 12<sup>th</sup> and 15<sup>th</sup> street

Provide emergency vehicle access with an unobstructed ROW width of no less than 25 feet.

Site Systems Assessment of existing infrastructure



Phase I:  
Interim Short-Term Public Plaza





## Phase II:

### **Community Engagement Process / Conceptual Design**

#### Document Existing Conditions- Collaborate

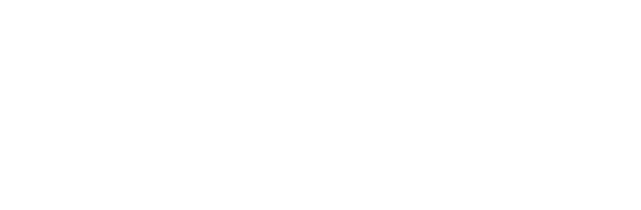
- Community engagement #1; collect community and targeted stakeholder input on concerns, desires, and preferences.
- Programming/input session: (1) general public, targeted stakeholder and city executive input session.

#### Design Alternatives - Collaborate

- Community engagement #2; share aesthetic design concepts; development of no more than (3) alternative concepts based on information gathered from community and targeted stakeholder feedback. (1) community and targeted stakeholder input session.

#### Design Alternatives - Collaborate

- Community engagement #3; Present draft conceptual plan, collect feedback, and incorporate features into design concept.



### Phase III: **Long-Term Public Plaza**

RFP for qualified licensed professionals to provide all necessary planning, design, cost estimating and engineering services necessary to refine conceptual design through PS&E services.





**Thank You**

