



Austin Transportation Department

Shared Micro-Mobility Program
Update

Jason Redfern, Parking Enterprise Manager
Joseph Al-hajeri, Program Manager



TRANSPORTATION

BRIEFING OVERVIEW



Quick History

Data Management/Analysis

Program Regulation & Fees

Safety and Infrastructure

Licenses and Devices

Enforcement/Compliance

Data Trends

Program Success

Future Program Enhancements

MICRO-MOBILITY HISTORY IN AUSTIN

2018 - 2021



Fall 2018
Final Director
Rules
adopted

May 2019
Ordinance 14-9
revised
to allow licensing
and permitting

**November
2021**
Device cap +
reduced speed
requirement

April 2018
Scooters deployed
in Austin -
Emergency rules
adopted to
regulate service

**December
2018**
Adopted new
fee of \$0.15
per trip

October 2021
Adopted application
fee and adjusted
trip fee to range of
\$0.15 - \$0.40.

SHARED MICRO-MOBILITY PROGRAM REGULATION & FEES



REGULATION

Texas Transportation Code, Title 7

- Chapter 551. - Operation of bicycles and mopeds, golf carts, and other low-powered vehicles.

Title 14 Use of Streets and Public Property

- *§ 14-9-23* - City-wide dockless transportation license authorized.
- *§ 14-9-24* - City-wide dockless transportation unit placement plan.
- *§ 14-9-25* - License amendment, suspension, or revocation.

Title 12 Traffic Enforcement

- *§ 12-2* - Micro-Mobility Devices and Bicycles.

CITY APPROVED FEES

Fee Type	Fee Amount	Note
License Fee	\$1,500 per year	New since FY 22/23
Per Device Fee	\$80 per device/ per year	Increased from \$60 in FY22/23
Trip Fee	\$0.15 - \$0.40 per trip	Currently \$0.15 and evaluating an escalating fee process. Fee range approved FY22/23

SHARED MICRO-MOBILITY PROGRAM

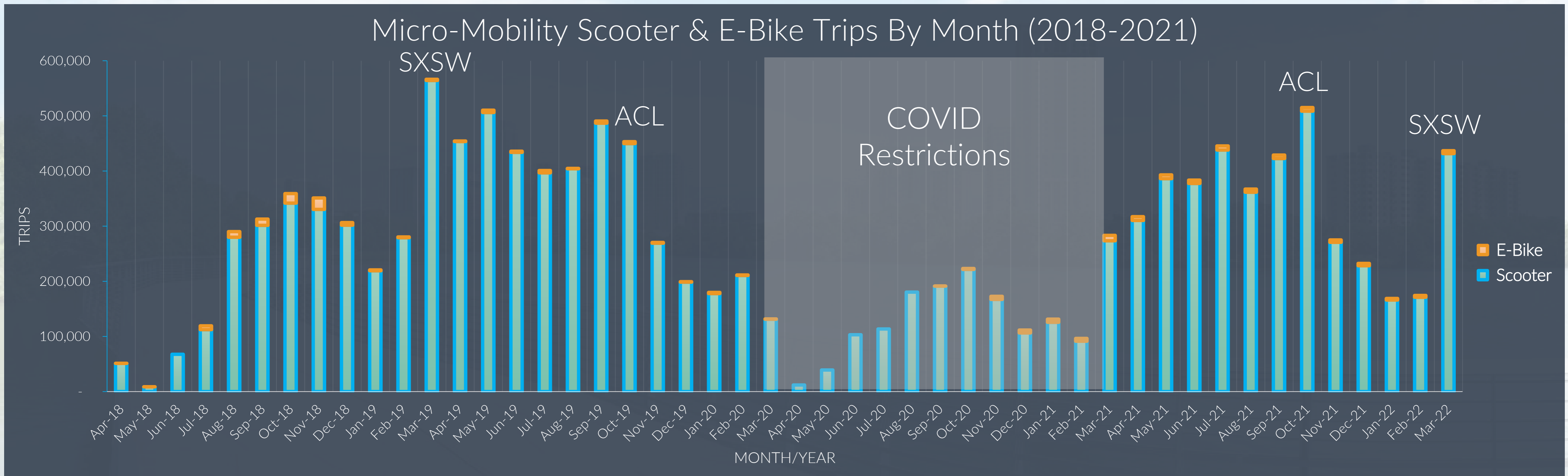
CURRENT LICENSES AND DEVICE TYPES



Program Adjustments (as of fall 2021)

- Moratorium on device permit increases in downtown
- Required reduction of speed from 20mph – 15mph
- Increased enforcement

WHAT THE DATA SAYS



Median Trip Distance
0.82 miles

Median Trip Duration
8.2 minutes

Trips per Day (avg)
9,128 trips

Total Trips
10,852,900 trips

Total Distance
13,260,669 miles

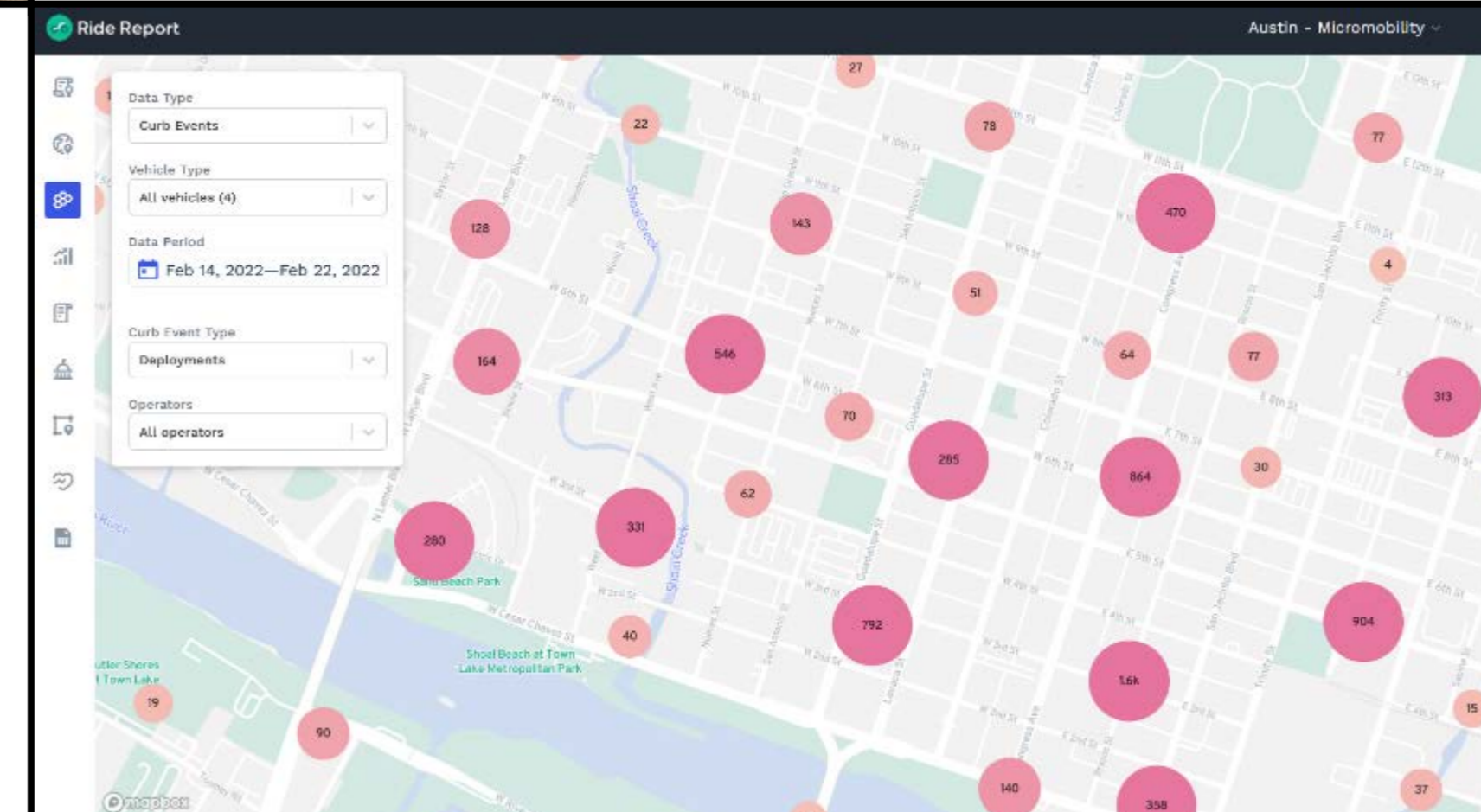
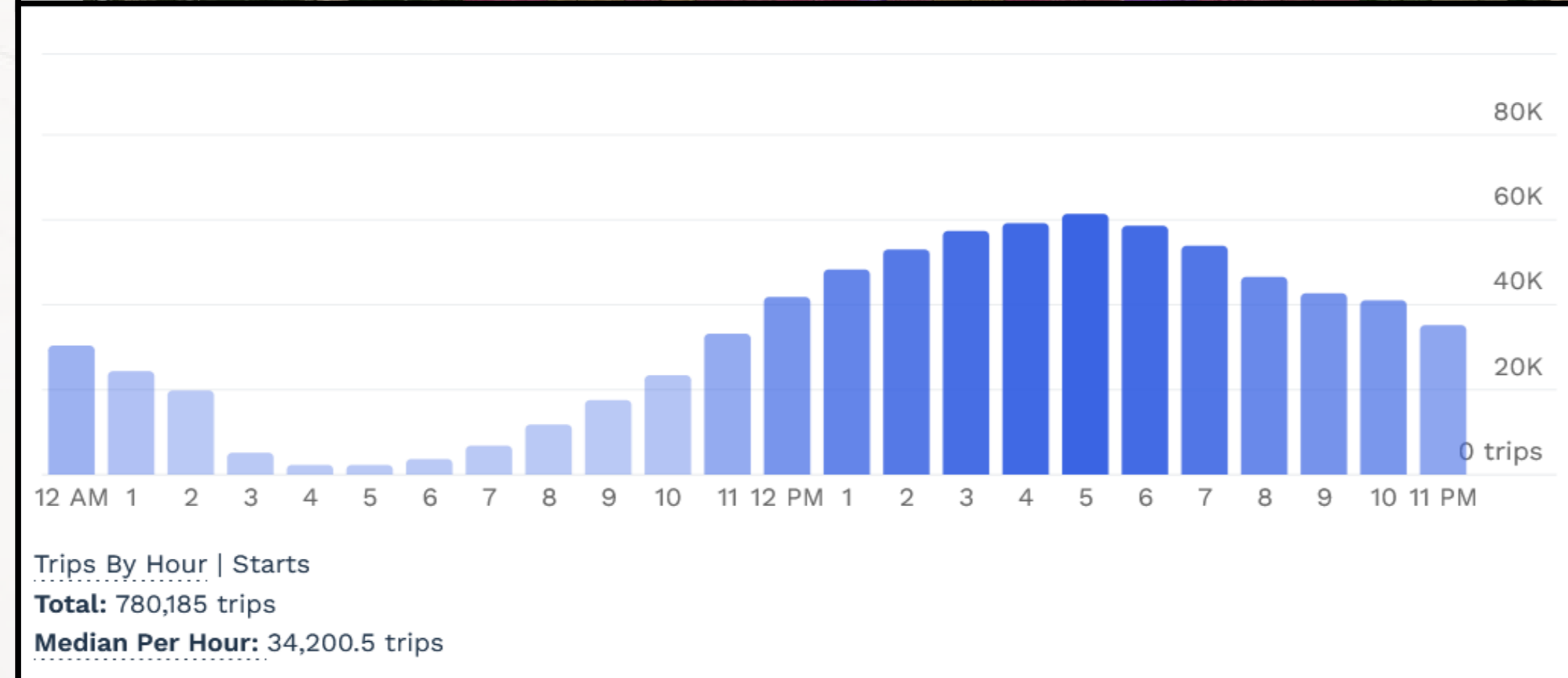
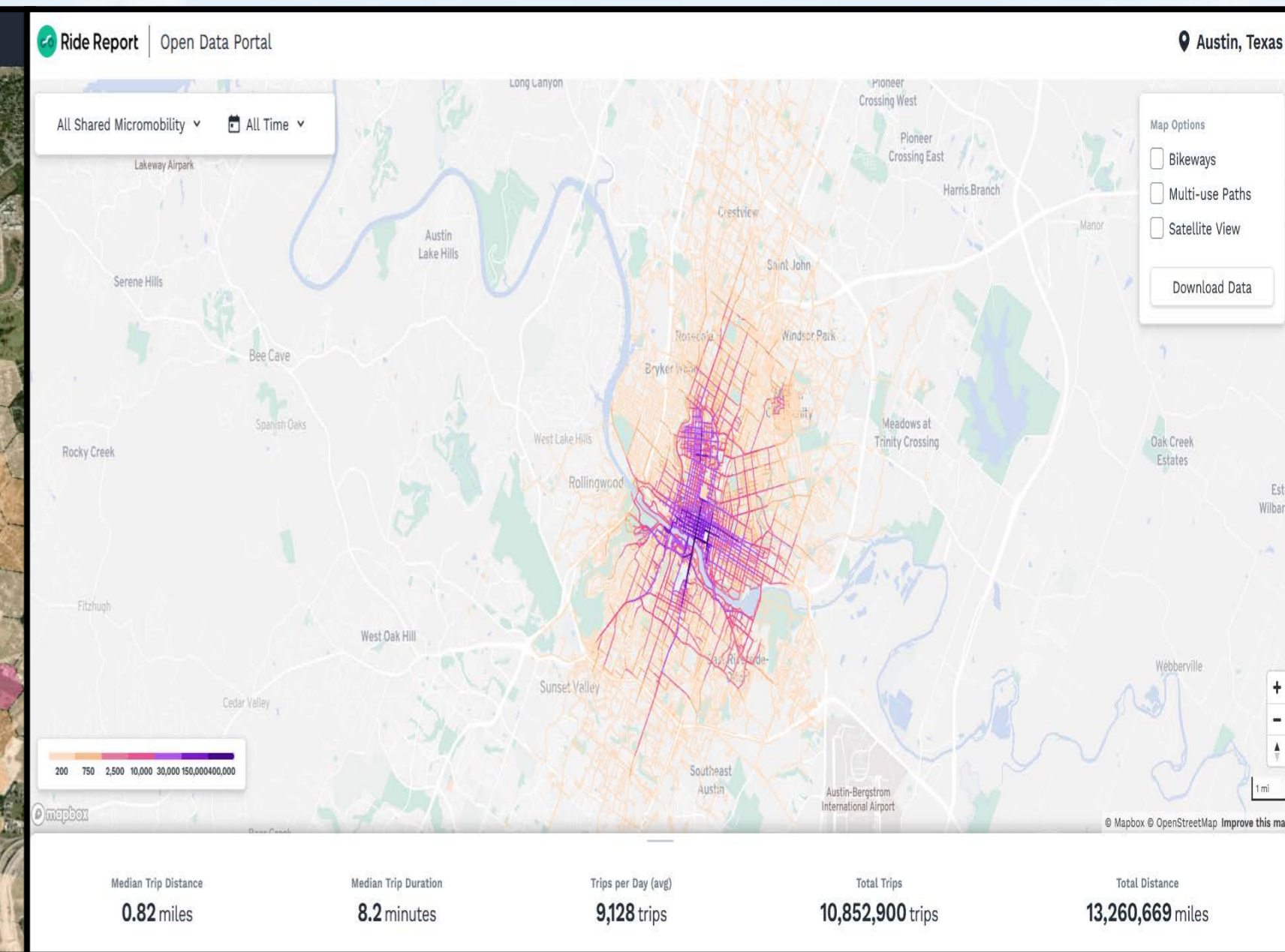
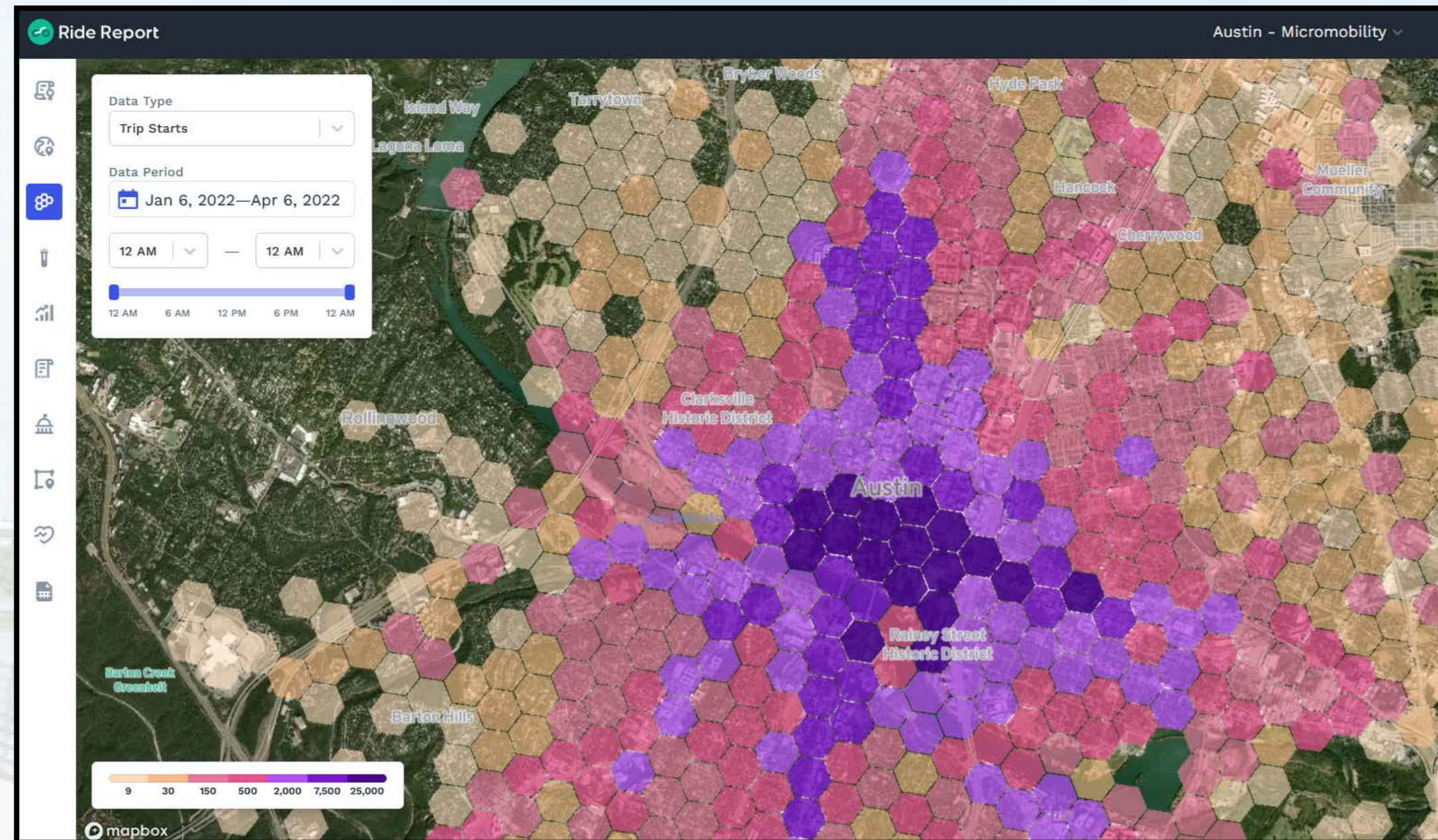
DATA MANAGEMENT/ ANALYSIS



Third Party Data Management

Data Quality / Planning Tools

Increased Public Data Availability & Protection of PII



SAFETY AND INFRASTRUCTURE

- Upgrading micromobility parking corrals – Increasing visibility and awareness using 2020 Mobility Bond.
- Use of new combined data to better understand critical safety and infrastructure enhancements.
- Contributed to device standards for commercial electric scooters to define required safety standards for devices.
- Geofencing and in-app approaches to limit speeds, inform riders of parking areas and where not to leave devices.
- Increased enforcement in high-use areas

AUSTINTEXAS.GOV/SHAREDMOBILITY



REPORT ISSUES TO AUSTIN 3-1-1



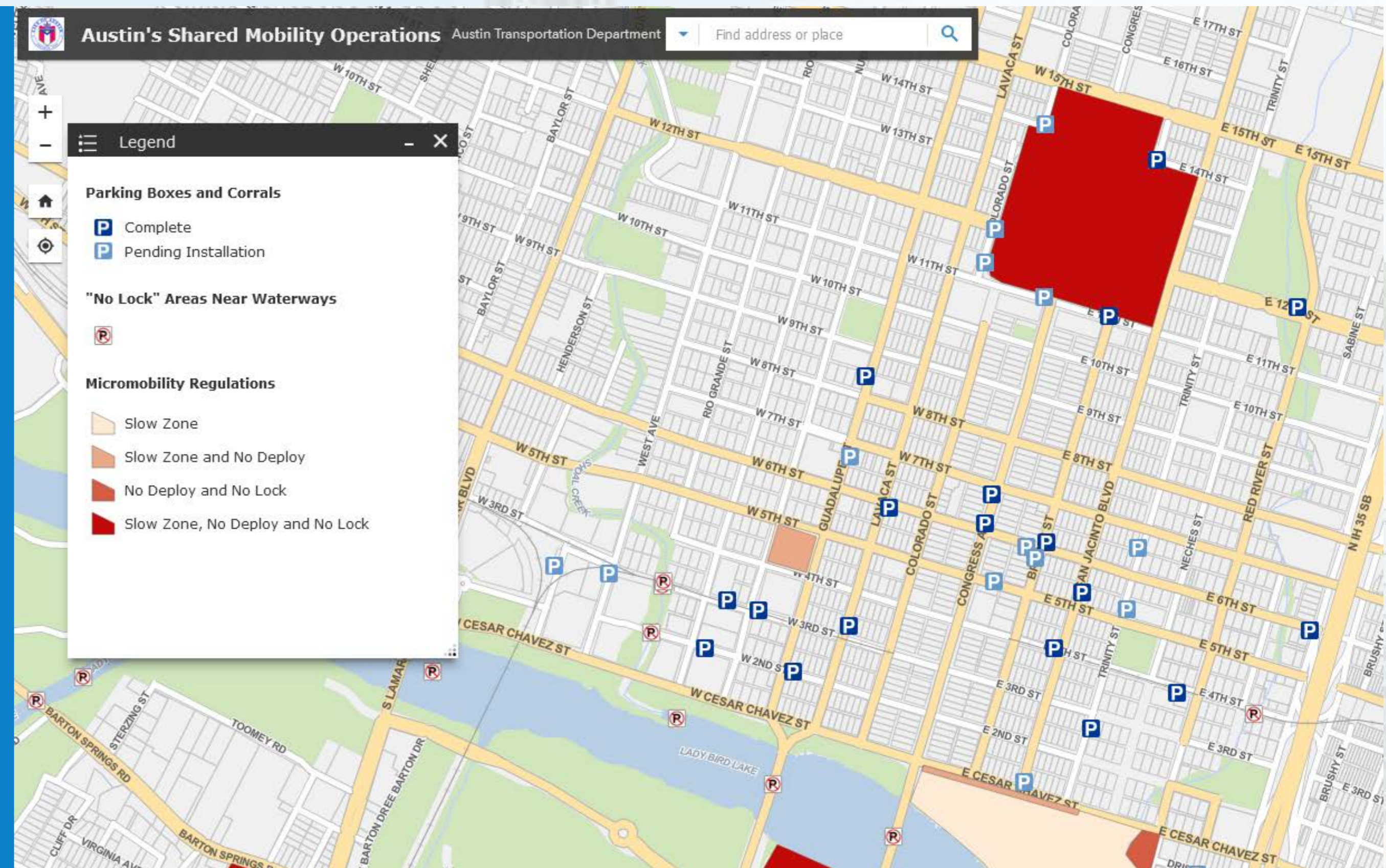
ENFORCEMENT/ COMPLIANCE

How ATD Monitors/ Enforcement

- Third-party data management
- Geofencing/device performance restrictions
- Calls/Customer Service Requests (CSR)
- CSR response audits
- Staff device audits
- Shared communications channel during special events

Results of Enforcement of Director Rules

- Impounds
- Reduction in Service
- Denial of license and/or device permits



PROGRAM SUCCESSES

- Refined internal administrative processes to analyze, regulate, track, and report more efficiently.
- Waterway awareness through signs and geofences, and internal processes for retrieval from watercourses
- Refined data management to ensure quality within data, protect privacy, increase planning tools, and open more data to the public.
- Better 311 coordination between providers/ City staff.
- More efficient special event response



FUTURE PROGRAM ENHANCEMENTS



Update Director Rules *(Tentatively Spring 2023)*

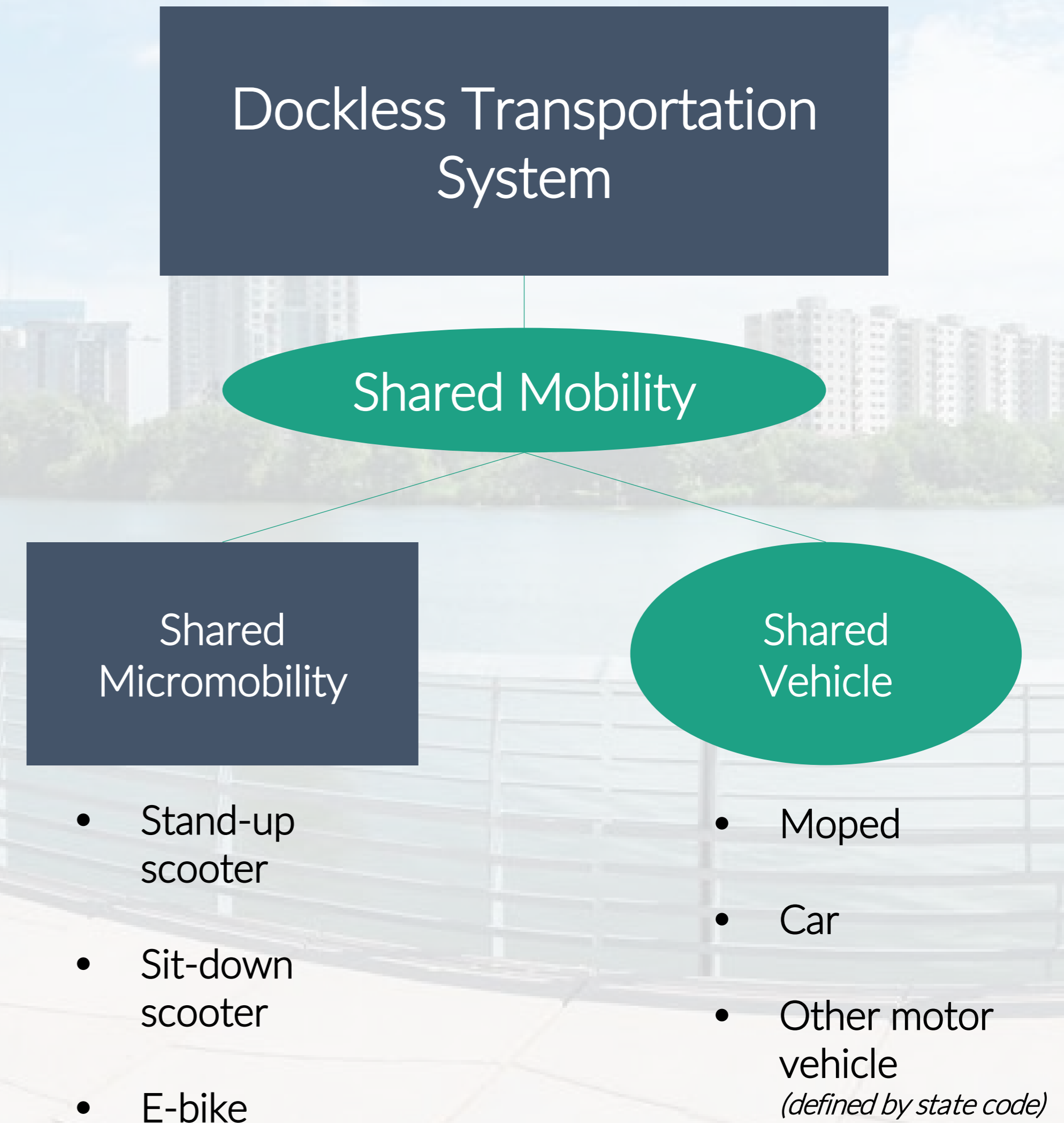
- Update terminology to be consistent with industry terminology
- Account for emerging modes and standards
- Updated safety guidelines for devices allowed to operate
- Standardized reporting and accountability
- Clear and enforceable operation expectations, performance grading criteria.
- Incorporate moped and car-share specific rules

Infrastructure and Safety

- Standard on micromobility parking infrastructure
- Improving pathways in areas that lack infrastructure to support increased micromobility use.
- Increased public outreach/education on safe riding and proper parking

Contracting

- RFP in process to update current third-party mobility data management contract





Questions?
