



April 20, 2022

Windsor 2300 Request for respectful porch addition.

We are writing to request permission to make the changes presented below, each followed with the reference information to support the request: (Architectural drawings contain historical and new drawings for review).

1) Identifying Historical portion of the house:

- a. North facing wing is a non-historic addition.
 - i. Re: Architectural Drawings A0.3
 - ii. Sanborn's plan proves no addition prior to 1961. Re: Appendix 1
 - iii. Possible record of permit addition in the 80's or 90's.

2) Remove the non-historic half round back porch and change doors on Non-original wing.

- a. There seems to be a permit that indicates an addition to the ground floor and second floor in the 1980's or 90's. It would indicate the back half round porch is an addition which can be considered false historicism and therefore should be removed.
 - i. Permit File needs to be requested.
 - ii. RE: Architectural Drawings: A0.5 – Demo Plan, A3.0 Reference images, A3.2 & A3.3 Elevations.
- b. New porch to be steel wood wrapped to minimize connections to existing porch. Roof to be tin.
 - i. Re Architectural Drawings: A3.3 Exterior Rear Elevation
- c. Replace Existing doors on wing addition for steel doors with true divided lights.
 - i. Re Architectural Drawings: A0.5 Demo Plan, A1.1 Proposed Plan, A3.0 - A3.3 Exterior Elevations & Reference Images
 - ii. Refer to Appendix 4c. **iii. Refer to Door Type 'C' on 'Gate, Door, and Window Type'**
- d. Light Well on rear elevation of house to be covered by new porch but remain accessible for maintenance.
 - i. ~~Top band of brick and~~ railing to be removed as not historic:
 - 1. Re. Architectural Drawings: A0.5 Demo Plan, A3.0 Reference ~~historical drawing detail and~~ close-up image.
 - ii. Emergency egress for basement maintained through other light well on South Elevation.
 - 1. Re Architectural Drawings: A1.0 – Demo Plan

3) Remove corner porch in back yard.

- a. Corner porch does not match historic design.
 - i. A0.5 – Demo Plan, A1.1 – Proposed Plan, A3.0 Reference images, A3.2 & A3.3 Elevations.
- b. Interior of existing stone column is hollow and does not house original columns.

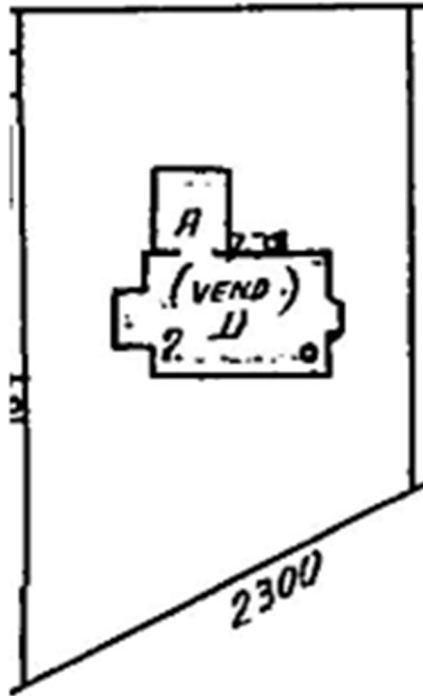


- i. Re: Images below in Appendix 2.
- 4) **Closing off existing access to back yard from entry at corner back porch.**
 - a. Historical Plan indicates a widow originally in plan at this location.
 - i. Re: Architectural Drawing Set: A0.5 – Demo Plan, A3.0 – Reference Images, A3.3 – Exterior Rear Elevation
 - b. New window sill to match existing brick sills.
 - c. Window to match the approved replacement Marvin windows from 2012.
 - i. RE: Window permit., See Appendix 3. ii. Refer to Door Type 'D' on 'Gate, Door, and Window Type'
- 5) **Open bricked off section of wall under porch to restore original historic opening.**
 - a. The historic plans for the house indicate a doorway to the back yard under this location.
 - i. Re Architectural Drawings: A0.5 Demo Plan, A1.1 Proposed Plan, A3.0 & A3.2 Exterior Elevations & Reference Images
 - b. New door to be steel and painted to match color of existing windows. Lights will be true divided lights. Light proportion designed to match existing light proportions.
 - i. Re. Architectural Drawings: A3.2
 - ii. Window Muntin & Mullion: See Appendix 5.
- 6) **Remove steps to non-original front patio and relocate access to opposite side of patio.**
 - a. Existing rectangular patio on front of house is non original and built after 1961.
 - i. RE: Sanborn's map in Appendix 1.
 - ii. Style of wall does not match original historic wall see Appendix 5.
 - iii. Re. A0.3 Site Plan, A0.5 Demo plan, A1.1 Floor Plan, A3.2 Elevation.
 - iv. Refer to Door Type 'A' on 'Gate, Door, and Window Type'
- 7) **Replace existing garage doors with new garage doors to resemble historic doors.**
 - a. Re. Architectural Drawings: A 3.3
 - b. Re. Appendix 6.



APPENDIX:

Appendix 1: 1961 Sanborn map (Vol 1, Sheet 54).



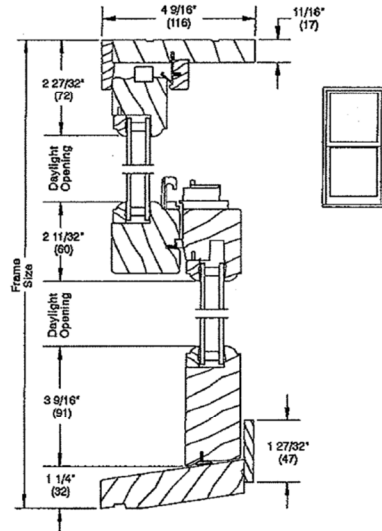
Appendix 2- Images of Hollow post in corner porch support.



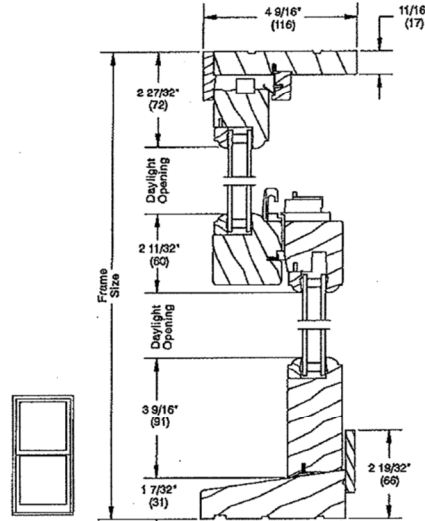


WOOD ULTIMATE INSERT DOUBLE HUNG

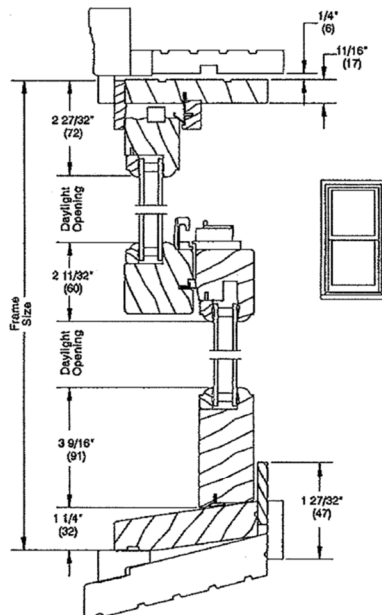
OPERATOR
SCALE: 3" = 1' 0"



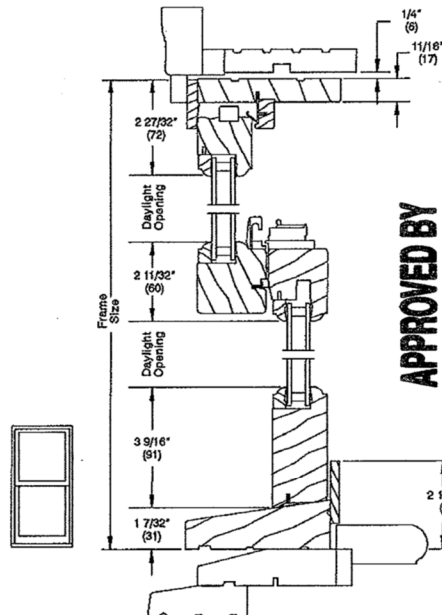
Head Jamb, Checkrail,
with Beveled Frame



Head Jamb, Checkrail,
with Flat Frame



Head Jamb, Checkrail, with Beveled Frame
Installed in existing frame



Head Jamb, Checkrail, with Flat Frame
Installed in existing frame

Grills to be provided
to mimic divided
lites on existing windows.
cm

APPROVED BY
HISTORIC LANDMARK COMMISSION
DATE: 6/7/12
BY: *[Signature]*
for HLC Chair

2011-08-04

CHECK MARVIN ONLINE DOCS FOR LATEST VERSION

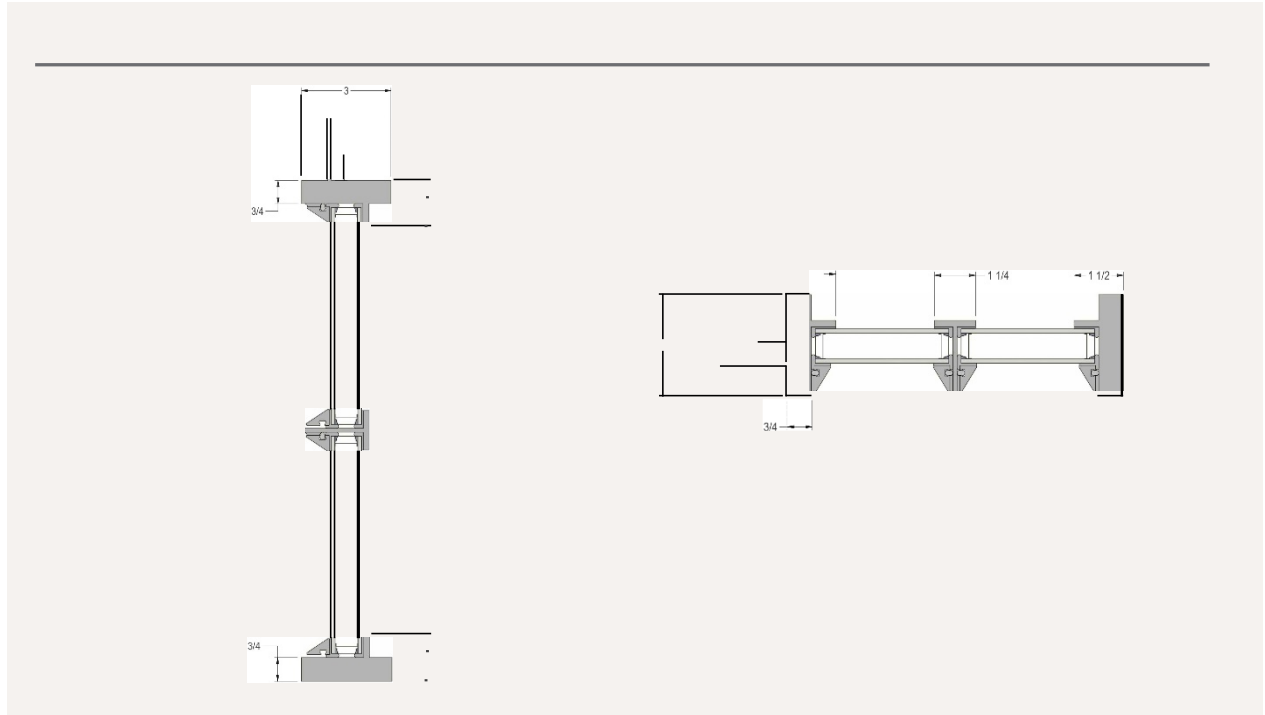
37.8

Printed On: Jun 06, 2012, 7:32 am

11708324

Marvin Architectural Detail Manual

Appendix 4: Steel window Muntin and Mullion details.



Appendix 5: Images of Existing historic brick fence & brick low wall on addition.

Overall image of historic brick fence:



Close up of historic brick fence:



Brick low wall in addition.



Close up of Brick low wall in addition. Does not match historic wall.





Appendix 6: image of Existing Garage doors to be replaced.



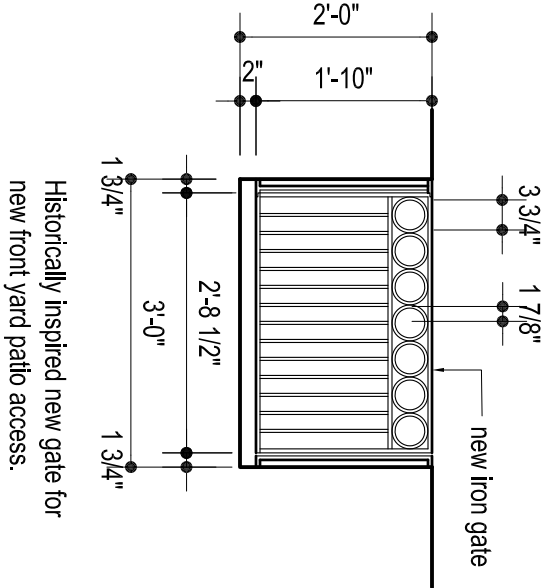
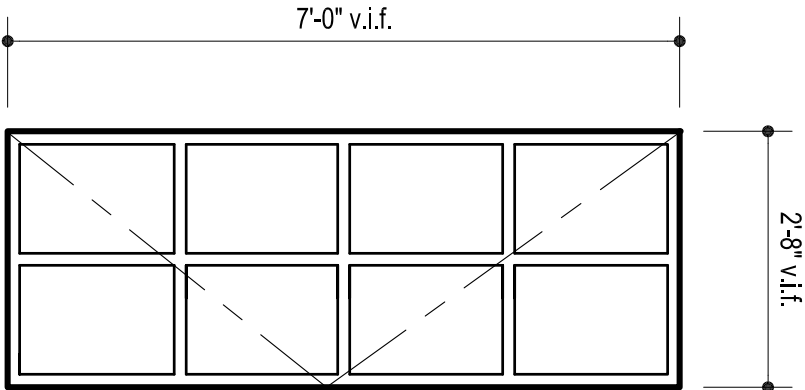


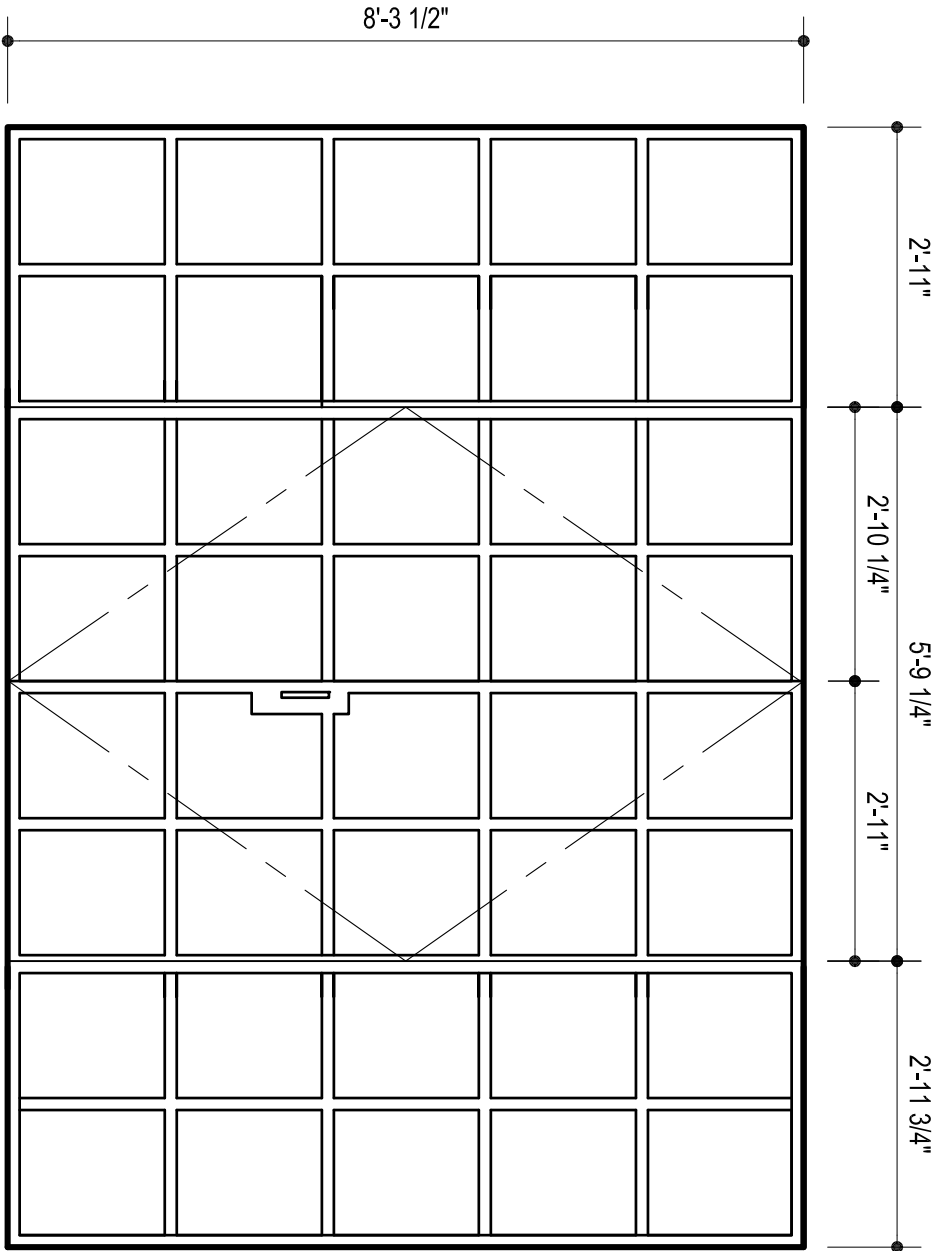
Image of existing historical gate.

TYPE
A



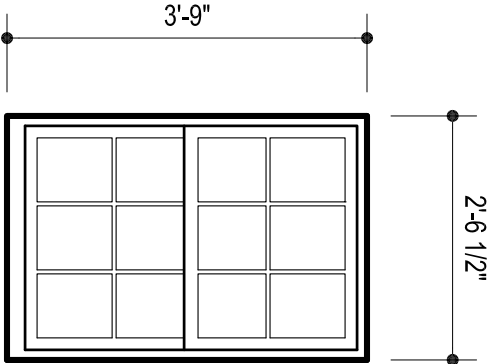
pntd steel door in historical opening.
Door Type H on historica schedule
indicates this door would have been
7'-0" x 2'-8"

TYPE
B



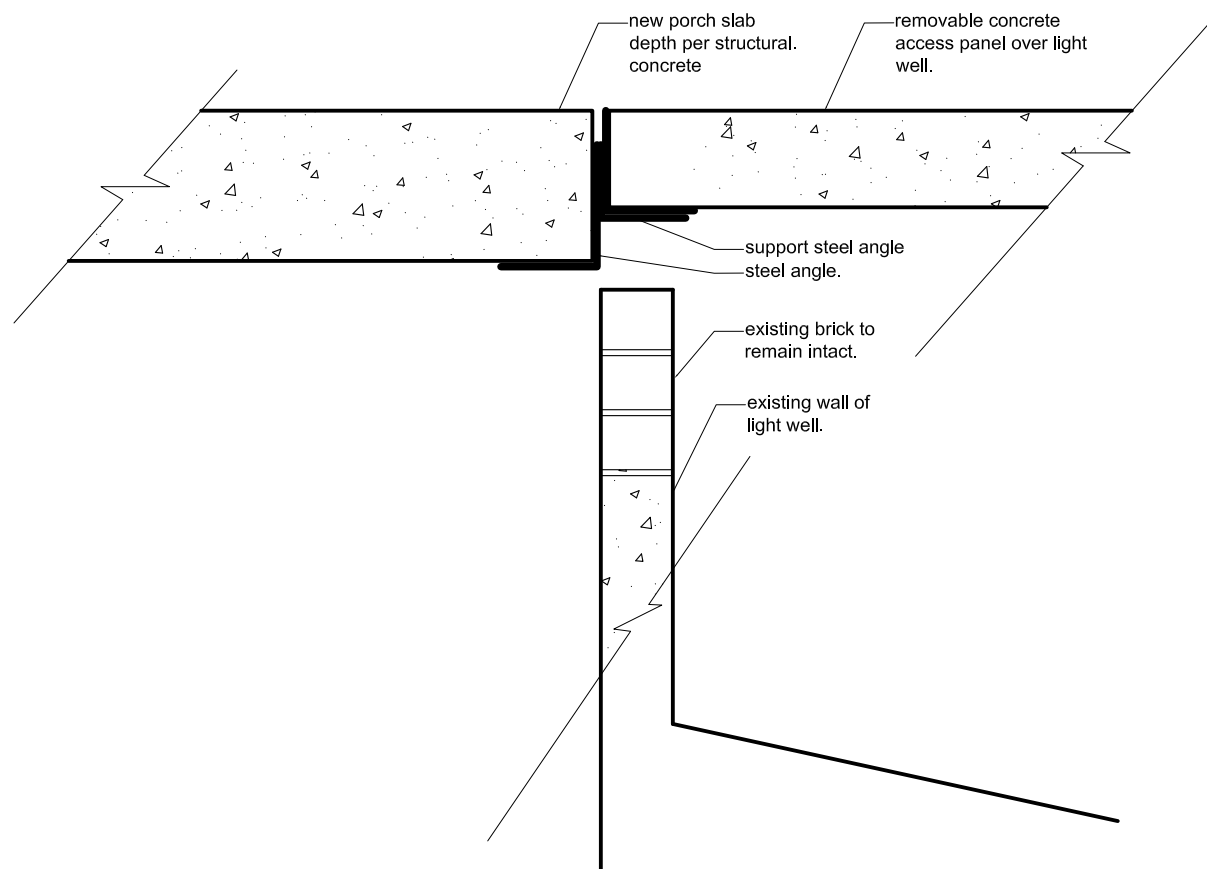
pntd steel door in existing opening.

TYPE
C



new dbl hung window to match
existing windows in manufaturer,
color and finish.
Marvin Aluminum Clad Windows.
See Spec in Appendix.

TYPE
D



1 LIGHT WELL
ACCESS PANEL DETAIL
1-1/2" = 1' SCALE



CARRIAGE HOUSE DOOR COMPANY

https://www.carriagedoor.com/3000series/WOOD_COLLECTION_SPECIFICATIONS

SPECIFICATION	DETAILS
Trim Options, Paint Grade	5⁄8" Extira (standard) bonded to the facing with concealed fasteners.
Trim Options, Stain Grade	Clear western red cedar, select tight knot cedar, mahogany, Douglas fir, lpe redwood, or any other available materials as specified.
Color Options, Paint Grade	Gray factory prime.
Color Options, Stain grade	Unfinished.
Construction Type	Shiplap meeting rails for superior strength and better sealing against wind, rain and snow.
Windows	1⁄8" DSB (standard) stopped and sealed in place. However, many other types of glass are available and optional (please specify).
Insulation	1 3⁄8" CFC-free expanded polystyrene insulation
R-value	6



SPECIFICATION	DETAILS
Dimensions	Section widths available in ¼” inch increments up to 22 feet wide. Door heights available in ¼” inch increments up to 16 feet.
Fire-Rating Testing Information	See more info on our Fire Rating page .
Wind Load Testing Information	See more info on our wind load testing page .
Warranty Details	See our warranty page .

HARDWARE SPECIFICATIONS

SPECIFICATION	DETAILS
Track	2” industrial grade galvanized angle-mounted verticals and horizontals - 2LC-6” low headroom clearance (standard). Standard lift 2SC-15” radius also available and can be used depending on overhead clearance and section height. 3” track is also available.
Hinges	Single car under 12’ wide, single-end 11 gauge graduated galvanized. Double car 12’ wide and over, double-end 11 gauge graduated galvanized.
Rollers	2” nylon 10 ball-bearing commercial (single car = short stem, double car = long stem)
Struts	3” galvanized struts for all single and double-wide doors.



SPECIFICATION DETAILS	
Counterbalance	10,000 cycle torsion springs, galvanized aircraft cable with minimum 8-to-1 safety factor. Cast aluminum cable drums, 1” diameter torsion shaft/tube. Doors under 650 pounds = 11 gauge tube. Doors 650 pounds and over = solid core steel shaft (keyed) and coupled if exceeding 151” in length.
Fasteners	Cadmium-plated fasteners (standard) for on-door hardware and securing tracks to jambs. All hinge fasteners are factory installed with bolt heads concealed beneath the overlay (concealed bolts).
Operation	Manual push-up (standard) - no lock assembly is supplied. Electric operation recommended for best possible operation.

Door Type: 3060

-similar to doors drawn in historical elevation and new exterior elevations.