

# City of Austin Mobility Outcome Report

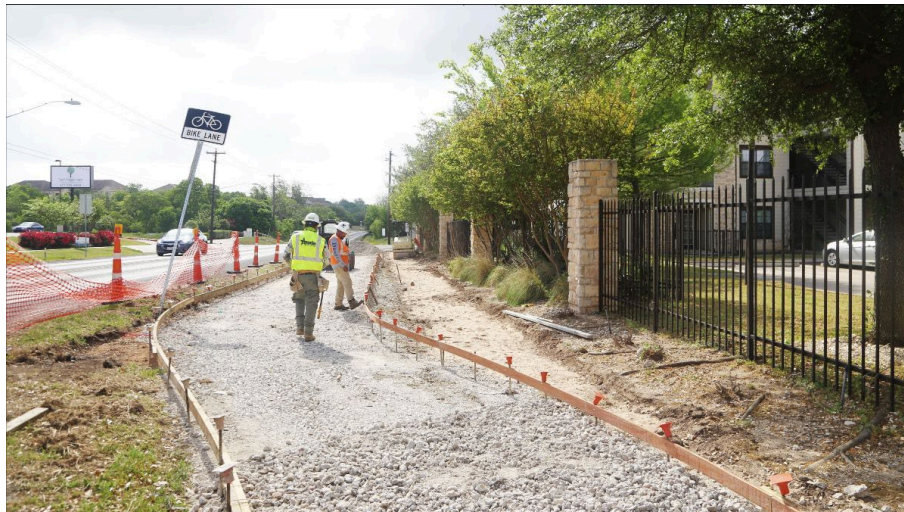
Presented by Assistant City Manager Gina Fiandaca  
May 2022



MOBILITY

## Monthly Highlights

### East Yager Lane Improvements



Crews started working in April on a project to reshape East Yager Lane, between Natures Bend and Jourdan Crossing Boulevard, to be a more walkable street while improving safety for all users. The upgrades include:

- A new 8-10 foot shared-use path on the south side of East Yager Lane
- Crossing Improvements – including ADA ramps, curb extensions, and crossing islands at five intersections
- New sidewalk connections between existing sidewalk gaps along the project limits
- A new protected bike lane on the north side of East Yager Lane

The \$2.8 million project is funded by the 2016 and 2020 Austin Mobility Bonds, as well as sidewalk fee-in-lieu finding.

### AUS Secures \$400M of Funding for Airport Expansion and Development Program

Austin-Bergstrom International Airport has secured \$400 million of funding after a successful Airport System Revenue Bond sale to investors. The funds will support near-term [Airport Expansion and Development Program](#) (AEDP) projects. Over the lifetime of the Program, an estimated \$3.5 to \$4 billion will be invested in airport improvements to support more passengers and more flights.

Earlier this year, S&P Global upgraded the Airport's credit rating from an A to an A+, making AUS one of only seven airports in the US to receive a credit upgrade from S&P in 2022. The Airport's upgraded credit rating, overall financial outlook, and strong pandemic recovery led to strong investor interest. This strong interest from investors allowed the Airport to lower its borrowing yields up to nine basis points, which in return creates approximately \$5 million of debt service savings for AUS over the lifetime of the bonds.

### Passenger & Cargo Traffic at Austin-Bergstrom International Airport Sees Increase

As airport recovery continues, Austin-Bergstrom International Airport (AUS) passenger traffic growth for February 2022 was up 249.04% compared to February 2021 with 1,203,251 passengers flying during the month. Air cargo totaled 21,861,336 lbs., up 77.53% compared to February 2021. International air cargo totaled 575,537 lbs., up 2,576.42%. Air Services transferred 579,654 lbs. of mail, up 32.81%; and 2,209,846 lbs. of belly freight, up 418.84%. General Aviation operations totaled 3,588, up 58.20%. Combined operations (including commercial and military) totaled 18,226, up 123.63%.

## East Fourth Street Safety Improvements



Work began April 10 to convert East Fourth Street to a one-way eastbound configuration between the northbound I-35 frontage road and San Marcos Street. This is expected to improve safety at the intersection of East Fourth Street and the northbound I-35 frontage road by preventing conflicts between right-turning motor vehicles and people walking, bicycling, or scooting across the Lance Armstrong Bikeway on the north curb of East Fourth Street.

Additional changes include:

- Improving visibility at the I-35 and Fourth Street crossing by reinforcing no on-street parking along the east curb of the I-35 northbound frontage road between Third Street and Fourth Street.
- Retaining westbound travel on East Fourth Street for local access only between San Marcos Street and 120 feet west of San Marcos Street to allow commercial vehicles to reach driveways.
- Installing a signal across the north and southbound frontage road of I-35 to support frequent crossings of the frontage road by people walking, bicycling, and rolling. This signal installation is expected this summer.

## Burnet Road Corridor Improvements

This spring, construction at the intersection of Burnet Road and Koenig Lane is expected to kick off and last approximately 12 to 14 months. This project will address critical safety, mobility, and connectivity needs in the area for all modes of transportation. Improvements include new shared-use paths, signal improvements, relocated bus stops in coordination with Capital Metro and a new pocket green near White Rock Drive.

Other work on Burnet Road includes subsurface utility engineering survey work between Research Blvd. (US183) and Bright Verde Way. In the coming weeks, construction will also begin on new sidewalks on the eastside of Burnet Road, beginning south of Twin Oaks Drive to south of Addison Avenue. Sidewalks are being constructed to accommodate a pedestrian hybrid beacon at Twin Oaks Drive, which will be activated following completion of the sidewalks.

## Intersection Upgrades Complete at Payton Gin Road and Ohlen Road



A new protected intersection is now complete at Payton Gin and Ohlen roads to provide safer connectivity for people walking, biking, and driving. The work included replacing a slip lane with a rain garden and connected sidewalk, protected bike lanes and shorter, accessible and more visible pedestrian crossings at all legs of the intersection.

The Austin Transportation [Bikeways Program](#) and Austin Public Works' [Safe Routes to School Program](#) collaborated on this project after the intersection was identified as a barrier for students and neighbors safely walking and biking to nearby schools, corner stores and bus service.

Work on the project, which was funded by the [2016 Mobility Bond](#), began in fall of 2021 and finished in April of 2022. You can see a [before and after video of the work](#), as well as a [photo album of the changes](#).

### Fleet Mobility Team Tackles the Transition Towards EVs

The Fleet Mobility Team was featured in Fleet Management Weekly. The Emerging Technology Division of the fleet department is working on a strategy of advanced automotive technology on multiple fronts, including alternative fuel programs, electric vehicles, telematics, and car sharing. Fleet Mobility Services has done a few pilots with artificial intelligence and predictive analytics regarding vehicle performance with the eventual goal of autonomous mobility. They also aim to use their shop technology to perform advanced diagnostics on a variety of vehicles from Fire Apparatus to their battery EV fleet.

The department is additionally focused on its environmental stewardship, working towards meeting the city of Austin's sustainability goals. They aim to achieve this through efforts such as safety and risk mitigation programs, advanced driver assisted systems, telematics and driver feedback, and accident reduction. These efforts accumulate into a focused aim to contain costs, reduce fleet expenses, and increase efficiency.



## Exposition Boulevard Enhancements



New improvements on Exposition Boulevard have created a safer route for students to walk or bike to nearby Casis Elementary School and O. Henry Middle School as well as safer access for everyone to neighborhood daycare centers, libraries, churches, stores and parks.

The work, completed in April by the [Austin Public Works](#) and [Austin Transportation](#) departments, extends from Bonnie Road to West 35th Street, completing a fully ADA-accessible route on either side of Exposition Boulevard from Lake Austin Boulevard to West 35th Street.

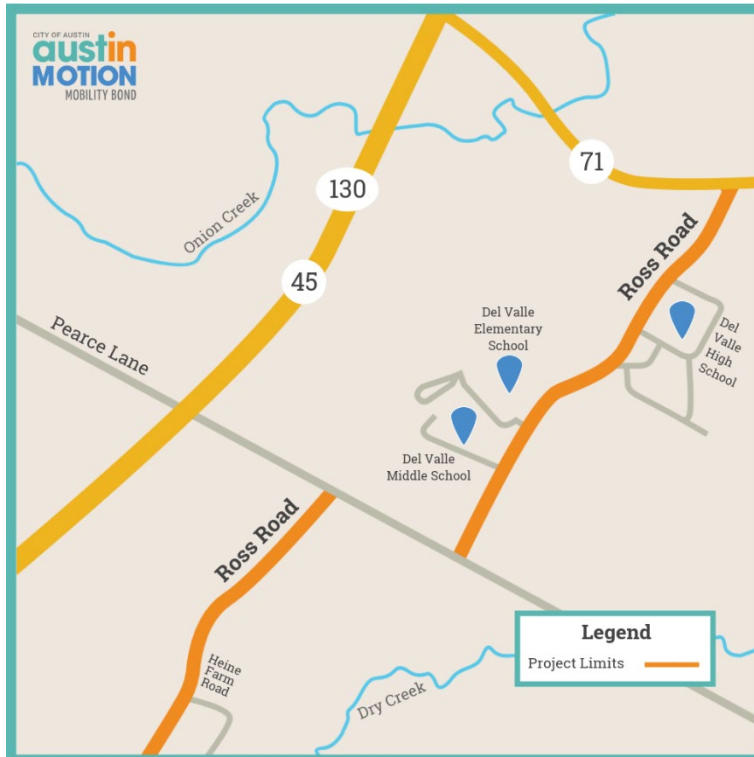
The project included:

- More than 15,000 linear feet (3 miles) of new or rehabilitated sidewalks
- Nine pedestrian crossing improvements along Exposition Boulevard, Westover Road, and Hillview Road, including the installation of seven new [pedestrian crossing islands](#)
- Over 40 curb ramps repaired or installed
- More than 1,000 feet of new curb and gutter

An intersection reconfiguration at Bridle Path and Exposition Boulevard to close a slip lane and replaced pavement with vegetation, enabling slower, safer turns and a shorter crossing  
An 8-foot-wide shared-use path on the west side of Exposition Boulevard from Gilbert Street to Bonnie Road

The project, which began construction in June 2021, cost approximately \$2 million and was jointly funded by voter-approved 2016 and 2018 Mobility Bonds. Mayor Pro Tem Alison Alter also dedicated District 10 Quarter Cent funding for safety and mobility improvements for students walking and biking in the area.

## Ross Road Design Improvements



Ross Road is in the process of design improvements to make it safer for everyone using the street, including people driving, walking, cycling, and accessing the neighborhood or the Del Valle ISD schools.

Ross Road was identified as a substandard street, meaning it does not meet standards for safety, mobility, and drainage. Voters approved \$35 million in the 2020 Mobility Bond to construct mobility and safety improvements to Ross Road between SH 71 and Heine Farm Road.

Near-term pedestrian crossing improvement are also planned along or across Ross Road at Fort Lexington Drive, Gillwell Drive, at the entrance to Del Valle Elementary School, Thome

Valley Drive, Spiers Way, Los Cielos Boulevard and Pearce Lane. Construction is expected to start in 2023.

## Lufthansa Resumes Flights to Austin

Lufthansa resumed flights to and from Austin to Frankfurt, Germany. Lufthansa's Austin service will employ the Airbus A330-300 in a three-class cabin configuration offering 42 Business Class, 28 Premium Economy and 185 Economy Class seats to accommodate a total of 255 passengers. Flights will occur three times per week on Mondays, Wednesdays, and Fridays.

## Looking Ahead

### Congress Avenue Urban Design Initiative Design Phase Kick Off

Congress Avenue is the Main Street of Texas, a cultural, historic, and commercial spine of Downtown Austin where people gather, celebrate, and create a bright future. The City of Austin and the Downtown Austin Alliance have partnered on a transformative urban design to reimagine Congress Avenue from Riverside Drive to the Texas Capitol.

After the [Congress Avenue Urban Design Initiative](#) went through a community feedback and visioning phase from 2017 to 2019, voters approved funding to advance the project into design and implementation as part of \$102 million dedicated to major capital improvements in the 2020 Austin Mobility Bond. This summer, the project is moving forward from the visioning phase into design. The project team will brief some of Austin's Boards and Commissions on the final Vision Plan and next steps this summer. Initial concept designs are expected to be ready for community feedback in early 2023.



## Project Connect – East Riverside/Pleasant Valley Light Rail Station



**East Riverside/Pleasant Valley Station: Wednesday, May 18, 5:30 p.m., virtual meeting**

The busy intersection of East Riverside Drive and Pleasant Valley Road is a critical juncture for the Blue Line, the 8.2-mile light rail transit line that would operate from the Austin-Bergstrom International Airport to Republic Square in downtown Austin. The proposed Riverside station at this intersection would connect the Blue Line to the Pleasant Valley MetroRapid bus line, currently under construction. [Register here for the virtual meeting](#), which will be held via Zoom.

### Street Impact Fee Webinar Series

Austin's Street Impact Fee, adopted by City Council in December 2020, will take effect on June 22. Ahead of its implementation, Austin Transportation is hosting a series of webinars to inform and educate developers of what to expect in order to receive a building permit.

Revenue from the fee will [fund transportation infrastructure improvements](#) in 17 defined Service Areas. The amount of the fee will vary by Service Area, as well as the type of zoning and intensity of the new development.

### Small-Scale Developers

Thursday, May 19, 2022, 1 p.m. | [Click here to register](#)

### Large-Scale Developers

Thursday, May 19, 2022, 10 a.m. | [Click here to register](#)

Webinars will be held via Zoom; sessions focused on the needs of small-scale developers will be conducted in both English and Spanish. Learn more about the Street Impact Fee program at [AustinTexas.gov/StreetImpactFee](https://austintexas.gov/StreetImpactFee).



## Partner Recap

### ATD/Texas Department of Transportation – Capital Express Central Project Collaboration

A recent I-35 CapEx VOICE meeting at Huston-Tillotson University allowed the community to review and comment on proposed bicycle and pedestrian crossings across I-35 through an approximately 8-mile stretch downtown, as well as [Single-Point Urban Interchange](#) designs at Airport Boulevard and Riverside Drive.

Comments can be shared with the [Texas Department of Transportation](#) (TxDOT). [Meeting materials can be found here](#), including the bicycle and pedestrian crossing schematics and examples of crossings east-to-west across the highway and shared-use paths along the frontage roads.

TxDOT is accepting feedback throughout the environmental review process. Comments can also be emailed to [CapExCentral@TxDOT.gov](mailto:CapExCentral@TxDOT.gov). The agency is also holding CapEx VOICE meetings approximately every other month.

The next official public comment period will come as a public hearing where the preferred alternative will be presented, expected late this year or early next year.

### Project Connect Office/Capital Metro/ATP – Project Connect Combined Maintenance Facility for the Blue and Orange Light Rail Lines

The Project Connect team, including staff from the City's Project Connect Office, Capital Metro, and Austin Transit Partnership, held a series of meetings to discuss sections of the Blue and Orange light rail transit lines, as well as the Combined Maintenance Facility.

The [Blue Line](#) project is an 8.2 mile light rail transit corridor that would operate from Republic Square in Downtown Austin to the Austin-Bergstrom International Airport. The [Orange Line](#) project is a 20 mile light rail transit corridor that would travel along Lamar Boulevard and Congress Avenue from the Tech Ridge Park & Ride at Howard Lane south to Slaughter Lane.

The Combined Maintenance Facility will be needed to service electric trains on the Blue and Orange Lines. While the location of the facility is still to be determined, the community was invited to attend a virtual meeting to focus on the facility's function.

## Community Resources

[Weekly Mobility Newsletter Sign Up](#)

[Upcoming Sidewalk Projects](#)

[2016 Bond Programs and Projects](#)

[Absent Sidewalk Map and Prioritization](#)

[Capital Projects Explorer](#)

[Street Preventative Maintenance](#)

[Austin Mobility Data and Performance Hub](#)

[Safe Ride Home Resources](#)

[Austin-Bergstrom International Airport](#)

[Special Event Road Closures](#)