



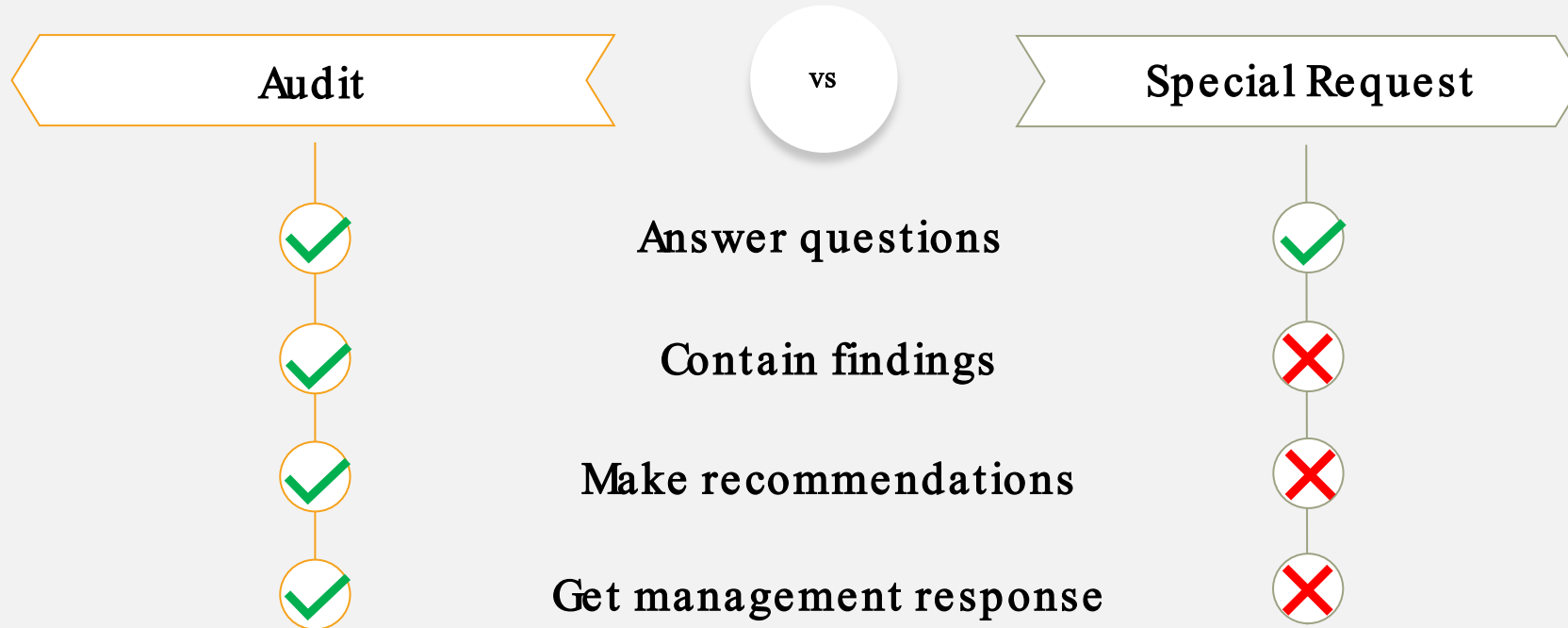
SPECIAL REPORT

SPECIAL REQUEST ON CRASHES INVOLVING CITY-OWNED VEHICLES

OFFICE OF THE CITY AUDITOR

MAY 2022

WHAT'S THE DIFFERENCE BETWEEN AN AUDIT AND A SPECIAL REQUEST?



5 QUESTIONS

1. How frequently does each department have crashes resulting in significant damage?
2. What is the estimated cost in damages, including repairs and liabilities, when determined the City was at fault?
3. How often are City vehicles irreparable (totaled) as a result of a crash, and what are the financial implications?
4. What is the City's protocol for employee seat belt usage?
5. How often are City drivers involved in crashes where they aren't wearing a seat belt? How often is there injury or death of a City driver who is not wearing a seat belt?

BACKGROUND



Fleet Mobility
Services



Human Resources
Department



Law Department

Q1 - HOW FREQUENTLY DOES EACH DEPARTMENT HAVE CRASHES RESULTING IN SIGNIFICANT DAMAGE?

Department	Total Number of Crashes
Austin Police Department	882
Austin Water	134
Austin Resource Recovery	131
Austin-Travis County Emergency Medical Services	126
Parks and Recreation Department	116
Austin Fire Department	109
Other departments	357
Total number of crashes	1,855

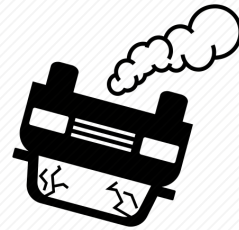
Q2 - WHAT IS THE ESTIMATED COST IN DAMAGES, INCLUDING REPAIRS AND LIABILITIES, IN THE 871 CRASHES WHERE THE CITY WAS AT FAULT?

Department	Repair and Replacement Cost of Damaged Vehicles	Liability Claim Payouts Due to Vehicle Crashes	Total Cost of Crashes where the City was at Fault
Austin Police Department	\$1,874,289	\$370,627	\$2,244,916
Austin Resource Recovery	\$75,780	\$344,100	\$419,880
Austin Water	\$297,792	\$87,318	\$385,110
Public Works Department	\$170,248	\$127,523	\$297,771
Austin-Travis County Emergency Medical Services	\$115,740	\$120,182	\$235,922
Parks and Recreation Department	\$111,950	\$100,734	\$212,684
Austin Fire Department	\$154,519	\$44,299	\$198,818
Other departments	\$472,798	\$246,382	\$719,180
Total cost of crashes	\$3,273,116	\$1,441,165	\$4,714,281

Q3 - HOW OFTEN ARE CITY VEHICLES IRREPARABLE (TOTALLED) AS A RESULT OF A CRASH, AND WHAT ARE THE FINANCIAL IMPLICATIONS?



6% crashes resulted in totaled City vehicle



116 vehicles totaled with a replacement cost of roughly \$4.8 million



75% of the totaled vehicles were owned by Austin Police Department

Q4 - WHAT IS THE CITY'S PROTOCOL FOR EMPLOYEE SEAT BELT USAGE?

Type of Guidance	Includes Guidance on Seat Belt Use	Includes Guidance on Seat Belt Discipline
Administrative Bulletin – Employee Vehicle Policy	No	No
Administrative Bulletin – Operating City Vehicles and Equipment	Yes	No
Administrative Bulletin – Using and Protecting City Vehicles and Equipment	No	No
Municipal Civil Service – Unacceptable Personal Conduct and Unsafe Behavior	No	Yes*
Occupational Safety and Health Resource Guide	Yes	No
Driver Safety Program	Yes	No
Driver Safety Standards	No**	No

*These rules do not apply to certain positions including police officers, fire fighters, and temporary employees

**No guidance on seat belt use for City drivers, only use for child passengers

Q5 - HOW OFTEN ARE CITY DRIVERS INVOLVED IN CRASHES WHERE THEY AREN'T WEARING A SEAT BELT? HOW OFTEN IS THERE INJURY OR DEATH OF A CITY DRIVER WHO IS NOT WEARING A SEAT BELT?

FLEET'S TIMELINE TO INSTALL NEW VEHICLE MONITORING SYSTEM





SPECIAL REPORT

SPECIAL REQUEST ON CRASHES INVOLVING CITY-OWNED VEHICLES

OFFICE OF THE CITY AUDITOR

MAY 2022