**FIELD NOTE DESCRIPTION**

BEING 0.142 ACRE (6,205 SQUARE FEET) OF ONE ACRE OF LAND, MORE OR LESS, OUT OF J.C. TANNEHILL SURVEY #29, ABTRACT #22 IN TRAVIS COUNTY, TEXAS, SAME BEING A PORTION OF A CALLED 23.32 ACRE TRACT CONVEYED TO THE CITY OF AUSTIN BY DEED FILED FOR RECORD ON SEPTEMBER 28, 1946 RECORDED IN VOLUME 828, PAGE 5 OF THE DEED RECORDS OF TRAVIS COUNTY, TEXAS, SAID 0.142 ACRE (6,205 SQUARE FEET) OF ONE ACRE OF LAND BEING MORE PARTICULARLY DESCRIBED BY METES AND BOUNDS AS FOLLOWS:

COMMENCING at a 1/2-inch iron rod found for an interior corner of said 23.32 acre tract and the south corner of a called 0.65 acre tract (Second Tract) as recorded in Volume 376, Page 276, Deed Records of Travis County, Texas;

THENCE N 27°26'17" E following a northwest line said 23.32 acre tract common with the southeast line of said 0.65 acre tract for a distance of **29.19 feet** to the **POINT OF BEGINNING**,

THENCE N 27°26'17" E continuing along said common line a distance of **40.00 feet** to a point for a corner, from which an iron rod found (1/2-inch diameter) for the east corner of a said 0.65 acre tract bears N 27°26'17" E, 256.54 feet;

THENCE over and across said 23.32 acre tract the following five (5) courses and distances:

S 60°01'23" E for a distance of **98.85 feet** to a point for corner,

S 29°51'40" E for a distance of **67.99 feet** to a point for corner,

S 60°08'20" W for a distance of **40.00 feet** to a point for corner,

N 29°51'40" W for a distance of **57.22 feet** to a point for corner, and

INTENTIONALLY LEFT BLANK

N 60°00'00" W for a distance of **86.30 feet** to the **POINT OF BEGINNING** and containing 0.142 acres or 6,205 square feet of land, more or less.

All bearings and distances are based on State Plane Coordinate System, Texas Central Zone, Nad 1983.


This description to accompany an exhibit of like date representing an on the ground survey supervised by me Derek Kinsaul, Registered Professional Land Surveyor.

April 9, 2021



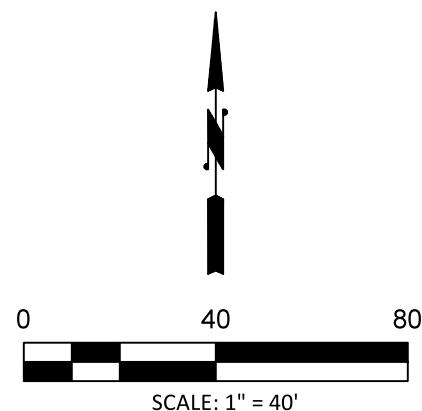
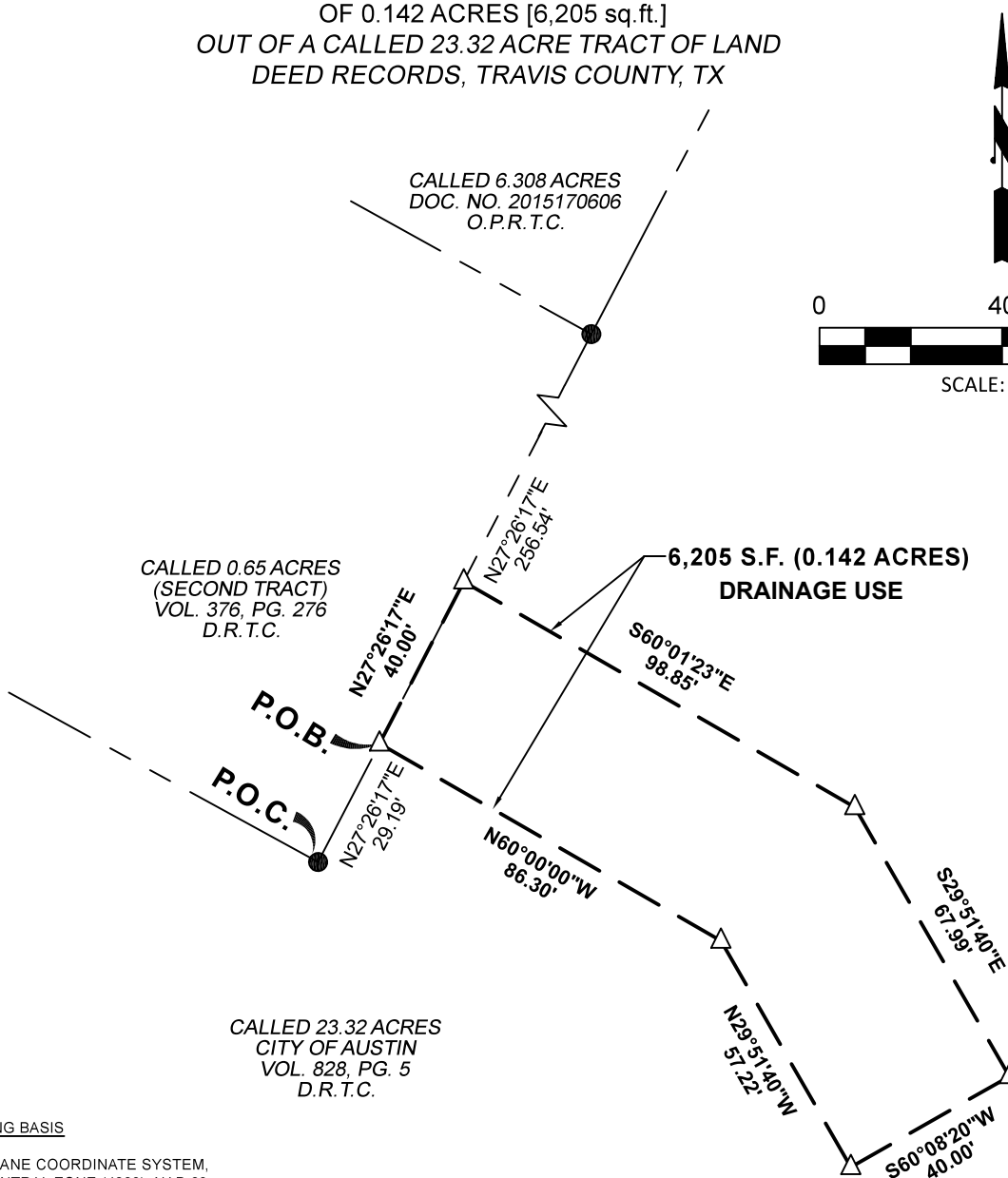
Derek Kinsaul
RPLS No. 6356
Job #17-0047.06
MAPSCO -616B
TCAD PARCEL ID:
0203180111
AUSTIN GRID: M21
REVISED: 5/14/21



FIELD NOTES REVIEWED
BY  DATE: 05/20/21
CITY OF AUSTIN
PUBLIC WORKS DEPARTMENT

DRAINAGE USE

OF 0.142 ACRES [6,205 sq. ft.]
OUT OF A CALLED 23.32 ACRE TRACT OF LAND
DEED RECORDS, TRAVIS COUNTY, TX

DATUM & BEARING BASIS

TEXAS STATE PLANE COORDINATE SYSTEM,
GRID NORTH, CENTRAL ZONE (4203), NAD 83.
ELEVATION DATA NAVD 88, GEOID 12B.
DISTANCES IN US SURVEY FEET (GRID).

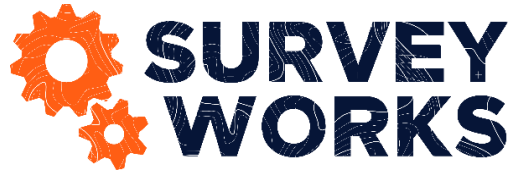
LEGEND

●	1/2" IRON ROD FOUND (UNLESS NOTED)
△	CALCULATED POINT
—	BREAKLINE
—	EASEMENT LINE
---	ADJOINER LINE
VOL. PG.	VOLUME AND PAGE
D.R.T.C.	DEED RECORDS
	TRAVIS COUNTY
DOC. NO.	DOCUMENT NUMBER
O.P.R.T.C.	OFFICIAL PUBLIC RECORDS
	TRAVIS COUNTY
()	RECORD INFORMATION
P.O.C.	POINT OF COMMENCEMENT
P.O.B.	POINT OF BEGINNING

SURVEYED FOR: WGINC
PROJECT NO. 17-0047.06
1125 SHADY LANE,
AUSTIN, TEXAS



INFO@SURVEYWORKS.COM
SURVEYWORKS.COM
1207 UPLAND DRIVE
AUSTIN, TX 78741
FIRM #10194157
(512) 599-8067

**FIELD NOTE DESCRIPTION**

BEING 0.107 ACRE (4,655 SQUARE FEET) OF ONE ACRE OF LAND, MORE OR LESS, OUT OF THE J.C. TANNEHILL SURVEY #29, ABTRACT #22 IN TRAVIS COUNTY, TEXAS, SAME BEING A PORTION OF A CALLED 23.32 ACRE TRACT CONVEYED TO THE CITY OF AUSTIN BY DEED FILED FOR RECORD ON SEPTEMBER 28, 1946 RECORDED IN VOLUME 828, PAGE 5 OF THE DEED RECORDS OF TRAVIS COUNTY, TEXAS, SAID 0.107 ACRE (4,655 SQUARE FEET) OF ONE ACRE OF LAND BEING MORE PARTICULARLY DESCRIBED BY METES AND BOUNDS AS FOLLOWS:

COMMENCING at a 1/2-inch iron rod found for an interior corner of said 23.32 acre tract and the south corner of a called 0.65 acre tract (Second Tract) as recorded in Volume 376, Page 276, Deed Records of Travis County, Texas;

THENCE N 27°26'17" E following the northwest line said 23.32 acre tract common with the southeast line of said 0.65 acre tract for a distance of **39.20 feet** to the **POINT OF BEGINNING**,

THENCE N 27°26'17" E continuing along said common line for a distance of **20.02 feet** to a point for a corner, from which an iron rod found (1/2-inch diameter) for the east corner of said 0.65 acre tract bears N 27°26'17" E, 266.51 feet;

THENCE over and across said 23.32 acre tract the following nine (9) courses and distances:

S 60°00'00" E for a distance of **87.79 feet** to a point for corner,

N 74°14'18" E for a distance of **13.96 feet** to a point for corner,

S 60°01'23" E for a distance of **0.88 feet** to a point for corner,

S 29°51'40" E for a distance of **67.99 feet** to a point for corner,

S 60°08'20" W for a distance of **40.00 feet** to a point for corner,

N 29°51'40" W for a distance of **57.22 feet** to a point for corner,

N 60°00'00" W for a distance of **29.06 feet** to a point for corner,

N 74°14'18" E for a distance of **13.96 feet** to a point for corner, and

N 60°00'00" W for a distance of **67.42 feet** to the **POINT OF BEGINNING** and containing 0.107 acres or 4,655 square feet of land, more or less.

All bearings and distances are based on State Plane Coordinate System, Texas Central Zone, Nad 1983.


This description to accompany a plat of like date representing an on the ground survey supervised by me Derek Kinsaul, Registered Professional Land Surveyor.

April 9, 2021



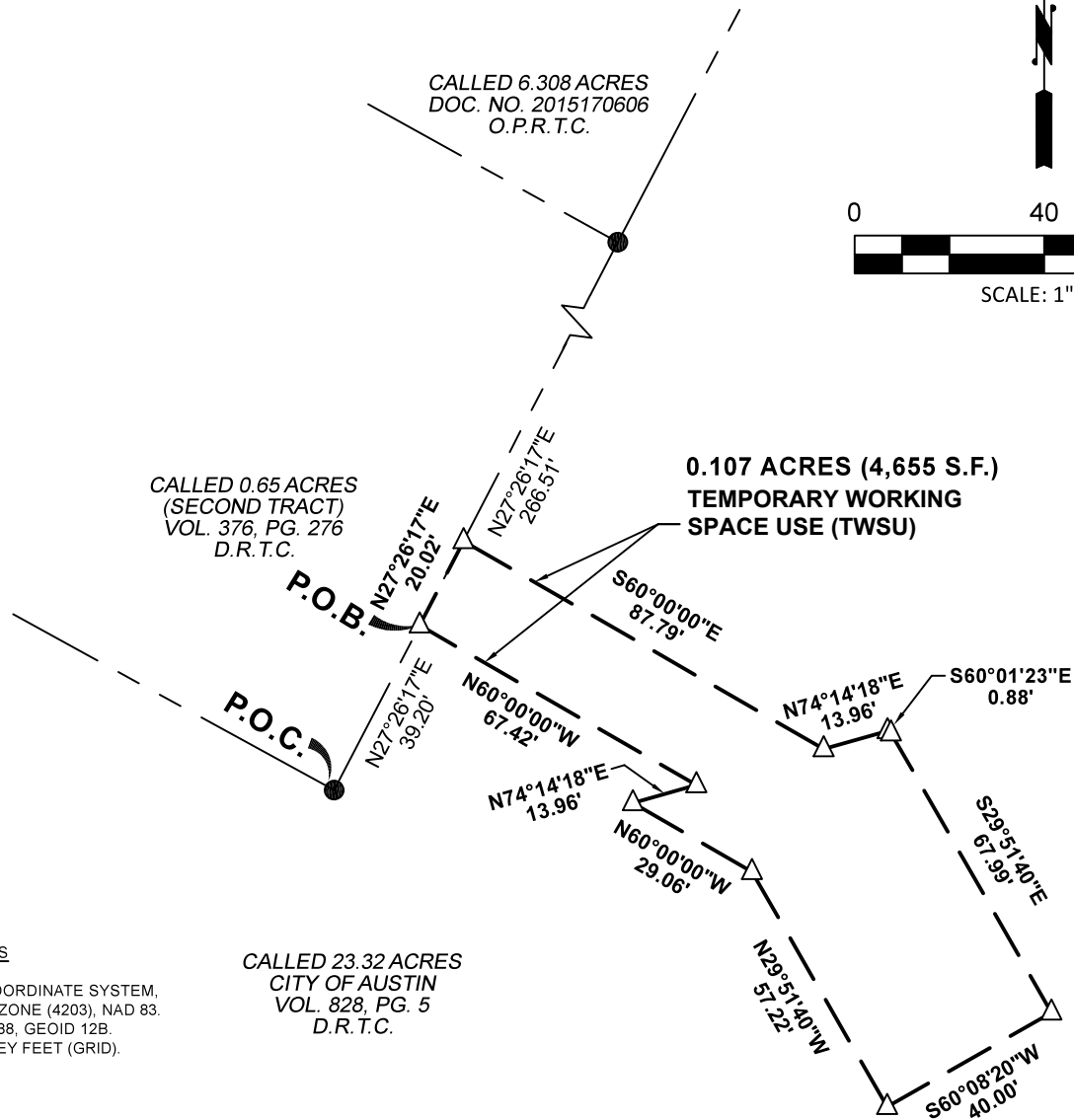
Derek Kinsaul
RPLS No. 6356
Job #17-0047.06
MAPSCO – 616B
TCAD PARCEL ID:
0203180111
AUSTIN GRID: M21
REVISED: 5/14/21



FIELD NOTES REVIEWED
BY  DATE: 05/20/21
CITY OF AUSTIN
PUBLIC WORKS DEPARTMENT

TEMPORARY WORKING SPACE USE

OF 0.107 ACRES [4,655 sq.ft.]
OUT OF A CALLED 23.32 ACRE TRACT OF LAND
DEED RECORDS, TRAVIS COUNTY, TX

DATUM & BEARING BASIS

TEXAS STATE PLANE COORDINATE SYSTEM,
GRID NORTH, CENTRAL ZONE (4203), NAD 83.
ELEVATION DATA NAVD 88, GEOID 12B.
DISTANCES IN US SURVEY FEET (GRID).

CALLED 23.32 ACRES
CITY OF AUSTIN
VOL. 828, PG. 5
D.R.T.C.

LEGEND

	1/2" IRON ROD FOUND (UNLESS NOTED)
	CALCULATED POINT
	BREAKLINE
	EASEMENT LINE
	ADJOINER LINE
VOL. PG.	VOLUME AND PAGE
D.R.T.C.	DEED RECORDS TRAVIS COUNTY
DOC. NO.	DOCUMENT NUMBER
O.P.R.T.C.	OFFICIAL PUBLIC RECORDS TRAVIS COUNTY
()	RECORD INFORMATION
P.O.C.	POINT OF COMMENCEMENT
P.O.B.	POINT OF BEGINNING

SURVEYED FOR: WGINC
PROJECT NO. 17-0047.06
1125 SHADY LANE,
AUSTIN, TEXAS



INFO@SURVEYWORKS.COM
SURVEYWORKS.COM
1207 UPLAND DRIVE
AUSTIN, TX 78741
FIRM #10194157
(512) 599-8067