



Austin Fire Station #10 Project

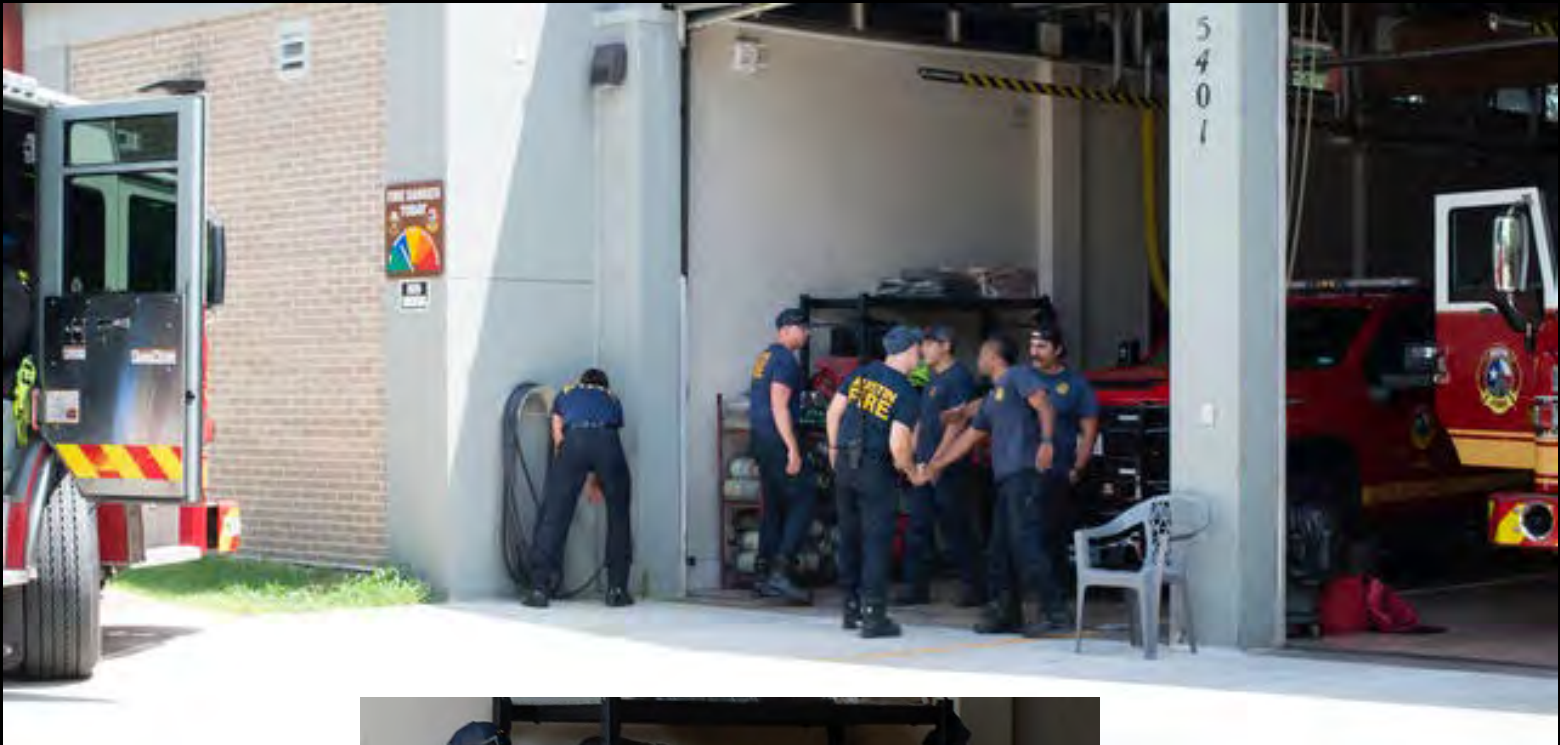
Art in Public Places
Cultural Arts Division
Austin TX

Mery Godigna Collet
Luis R Gutierrez



Material:
Earthy
Solid
Incorruptible





Shape:
Hands
Holding
hands







Title:

I GOT YOU

Brotherhood

Camaraderie

Bravery

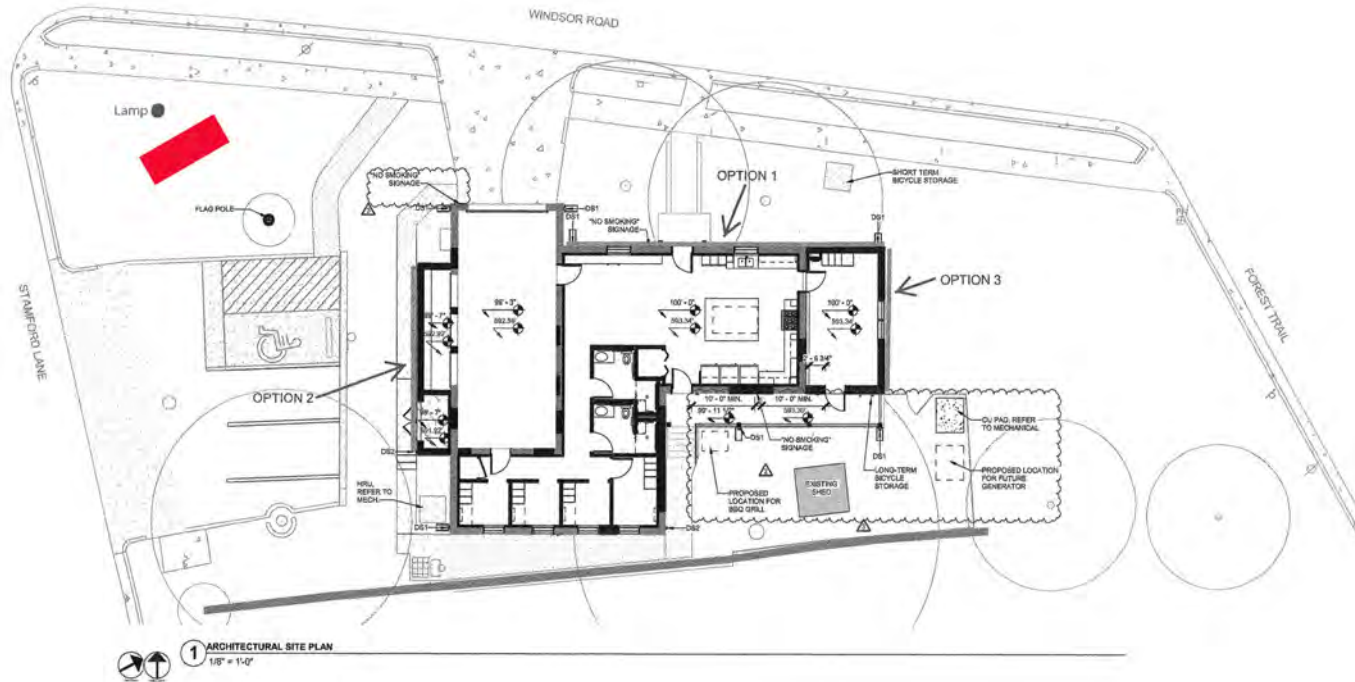
Empathy

GENERAL NOTES - ARCHITECTURAL SITE	
1	INFORMATION SHOWN ON THIS SITE PLAN IS SUPPLEMENTARY TO SITE PLANS BY OTHERS. REFER TO GRI, AND MEP SITE PLANS FOR ADDITIONAL SITE WORK AND INFORMATION.
2	VERIFY EXISTING FIELD CONDITIONS AND REPORT ANY DISCREPANCIES BETWEEN ACTUAL FIELD CONDITIONS AND THESE PLANS PRIOR TO COMMENCING WORK.
3	ALL NEW SIDEWALKS TO HAVE MAX 1:20 GRADE WITH DROPS SLOPE TO DRAIN AT 1/4" PER FOOT. BRIDGE FASH LINES UNLESS OTHERWISE NOTED.
4	ALL ACCESSIBLE PARKING AREAS, ACCESSIBLE LOADING ZONE, AND THE DROPS SLOPES OF SIDEWALKS ON ACCESSIBLE ROUTES TO MAINTAIN MAX 1:20 SLOPE.
5	PROVIDE PAINTED CURB FOR FIRE LANE STRIPING IN ACCORDANCE WITH CITY/COUNTY FIRE STANDARDS.
6	ALL CURB RASPS SHALL HAVE FOR THE FULL WIDTH AND DEPTH OF THE RAMP A LIGHT REFLECTIVE COLOR AND TEXTURE THAT SIGNIFICANTLY CONTRASTS WITH ADJACENT PEDESTRIAN ROUTES.

DOWNSPOUT LEGEND

ABSES, SEE SECTIONS

D81 DOWNSPOUT SURFACE DRAIN (CONCRETE SPLASH BLOCK)
D82 DOWNSPOUT TO DRAIN UNDERGROUND PERMISTEX DRAIN WITH PIPE TO DAYLIGHT



Casa Bella
ARCHITECTS
3009 WINDSOR ROAD
AUSTIN, TEXAS 78703
TEL: 512.444.1111
WWW.CASABELLAARCHITECTS.COM

NOT FOR
REGULATORY
APPROVAL,
PERMITTING OR
CONSTRUCTION

DATE: 08/01/2023
BY: J. B. BROWN

REVISIONS	DATE	BY	DESCRIPTION
1	08/01/2023	J. B. BROWN	ISSUED FOR PERMITTING
2	08/01/2023	J. B. BROWN	ISSUED FOR CONSTRUCTION

CITY OF AUSTIN
FIRESTATION #10
3009 WINDSOR ROAD
AUSTIN, TEXAS 78703

© 2023 Casa Bella Architects
All Rights Reserved. These images & drawings are the sole property of the Architect, Casa Bella Architects. They may not be reproduced in any form, by any means, for any purpose without previous written permission from Casa Bella Architects.

PROJECT: 22-008
PROJECT: 3009 WINDSOR ROAD
SHEET: 001
DATE: 08/01/2023

ARCHITECTURAL
SITE PLAN
AS101

LOCATION

FS # 10

3009 Windsor Rd
Austin 78703



Area of Location



GOT YOU!

Atelier Godigna Collet
Luis R Gutierrez

Proposed
design for
public art
located at
AFS 10

Conceptual yet representative
Easy to understand
Inspired by the mission of AFD, service and
solidarity towards the community
and towards each other as a team.



Human Scale



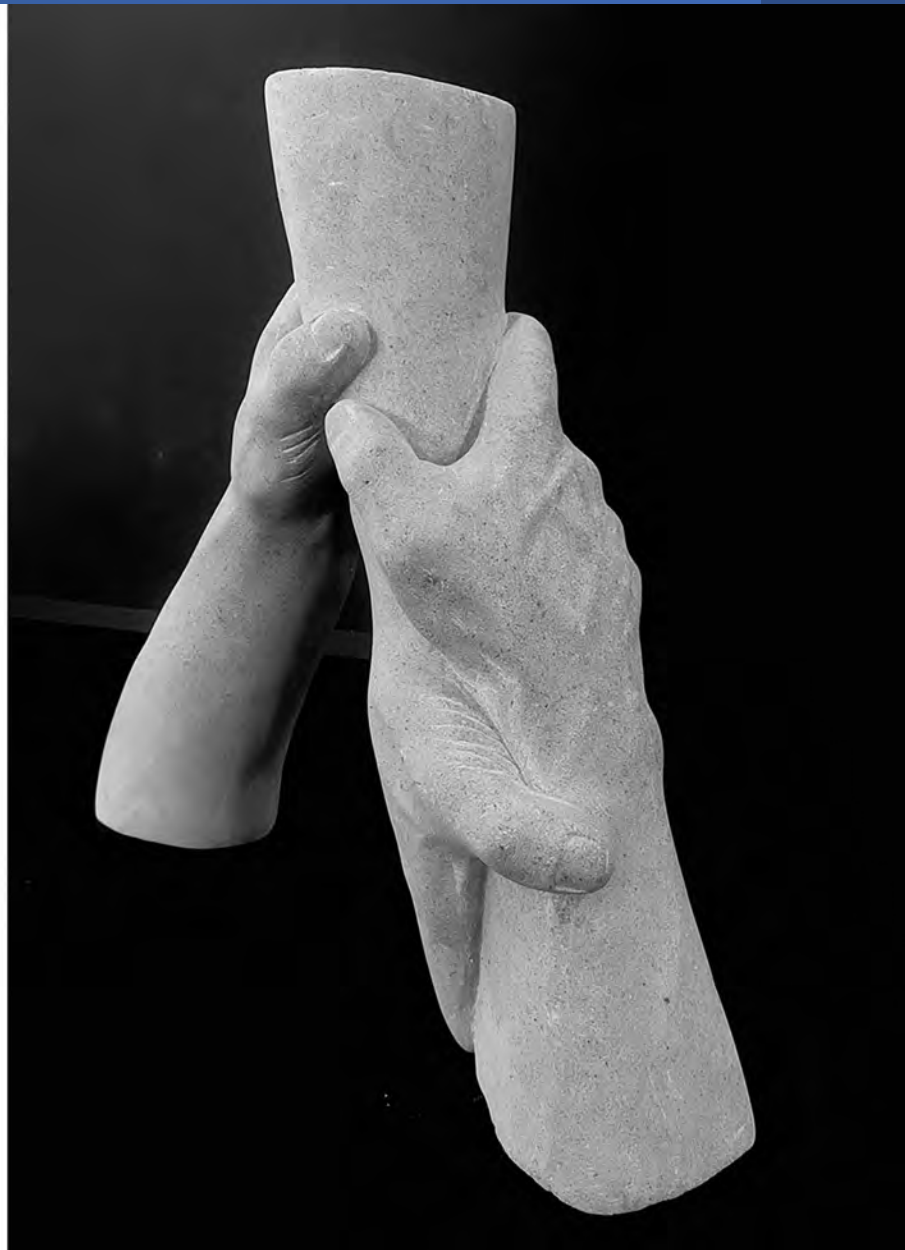
Jon Steedly, Bobby Harlon, Jolan Gallop



Self-suorting shape(triangle)

Will be attatched to an elevated base,
and with landscape around discouraging
climbing.

Artwork requieres zero paint.
Minimal manteniance.
Eco friendly





Material

- Lueders Stone:
- Fossiliferous Limestone.
- True Texan Limestone.
- Hardest of Limestones.
- Hardest than Travertine.
- Denser, compact and absorbs
- much less water withstanding weather conditions.

Sealer:

Apply every 10 years.

Material will be provided for maintenance.

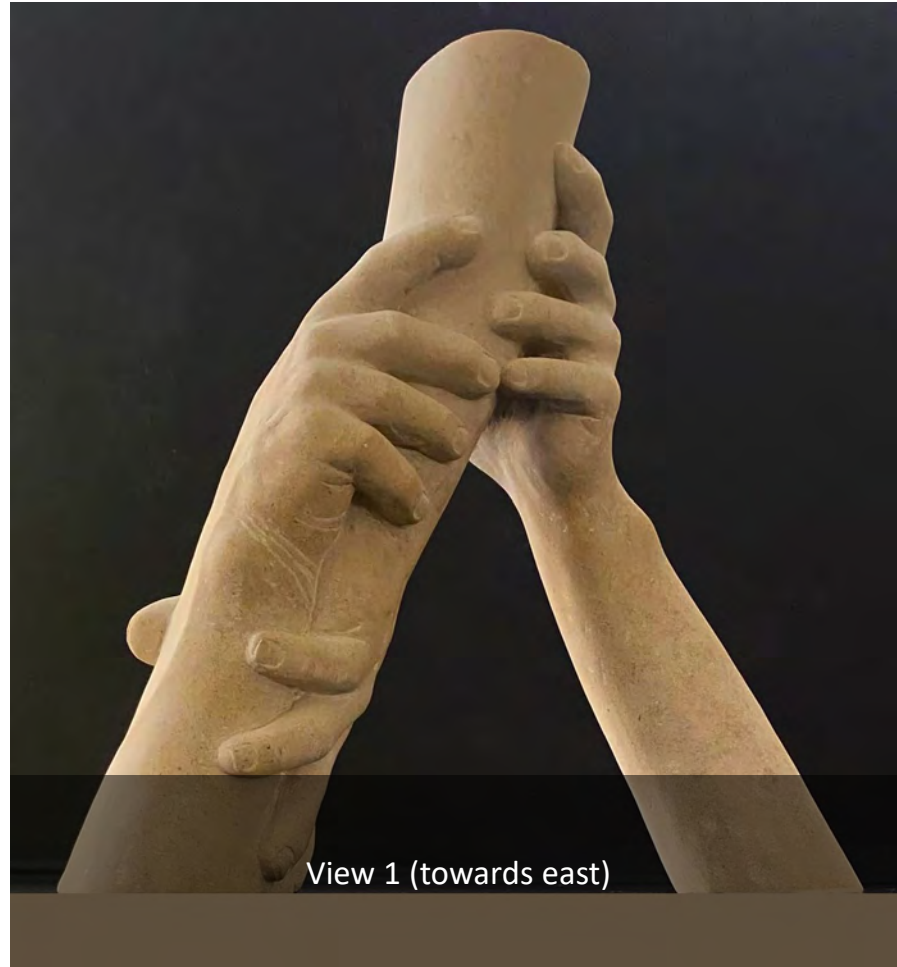


Features & Benefits

- STONETECH® BulletProof® Sealer offers maximum stain protection against oil and water based stains
- Built with [Microban®](#) antimicrobial technology^s - the sealer continuously inhibits the growth of bacteria, mold and mildew on the sealed surface
- Best sealer for the most porous natural stone, tile, masonry and grout
- Breathable, penetrating sealer preserves the original look of the surface
- Water-based formula - better for you and the environment
- Low odor, non-flammable and weather resistant - for interior and exterior use.

STONETECH® BulletProof® Sealer is a water-based penetrating sealer that provides maximum stain and antimicrobial product protection while preserving the natural look of the surface. It can be used as a grout sealer, tile sealer, masonry sealer and in many other applications. This premium sealer offers the best protection on the most porous natural stone, tile, masonry and grout surfaces in interior and exterior applications.

Built with [Microban®](#) antimicrobial protection, STONETECH BulletProof Sealer continuously inhibits the growth of stain and odor causing bacteria, mold and mildew on surfaces. A safer professional grade alternative to high VOC solvent-based sealers that is better for you and the environment and comes with a lifetime product satisfaction guarantee.





- Earthy.
- From nature, surrounded by nature.
- Elevated slab(15") discourage climbing and protect the artwork from lawnmower or edger.
- Monumental but preserving the scale of the building and neighborhood.

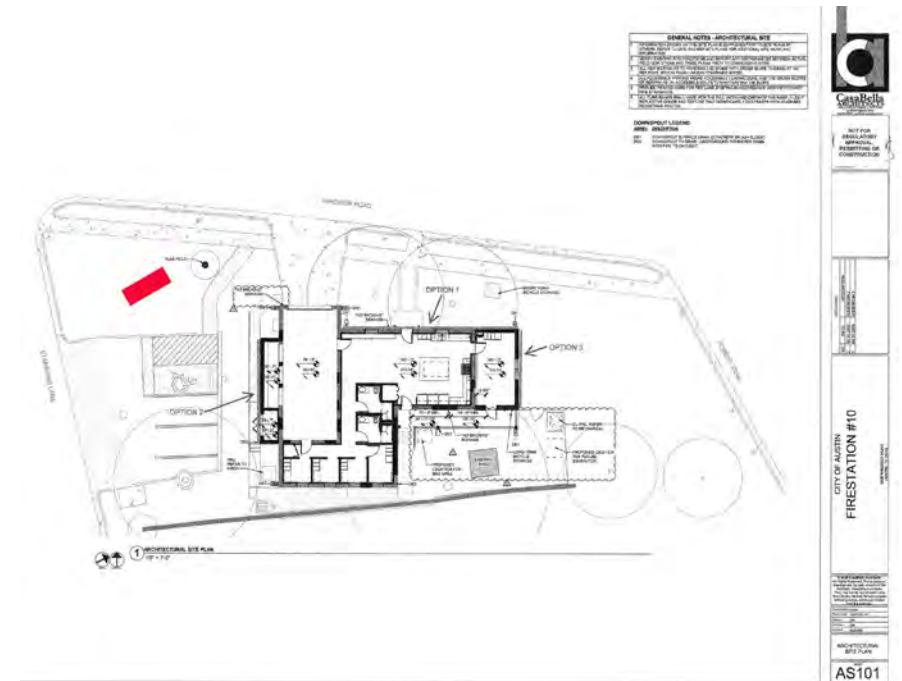
Illumination



Hinkley Lighting - 54000 - Line Voltage Spot - 1 Light 120V Line Voltage Small Spot Light - 3.75 Inches Wide by 6.63 Inches High



Spotlight with PAR 20 50 watt bulb.
20 additional PAR20 50 watt bulbs for one bulb replacement every year.



Pull power from existing flagpole lights and add an up spot light for sculpture.

-
- In relation with context





1'

7'

1'

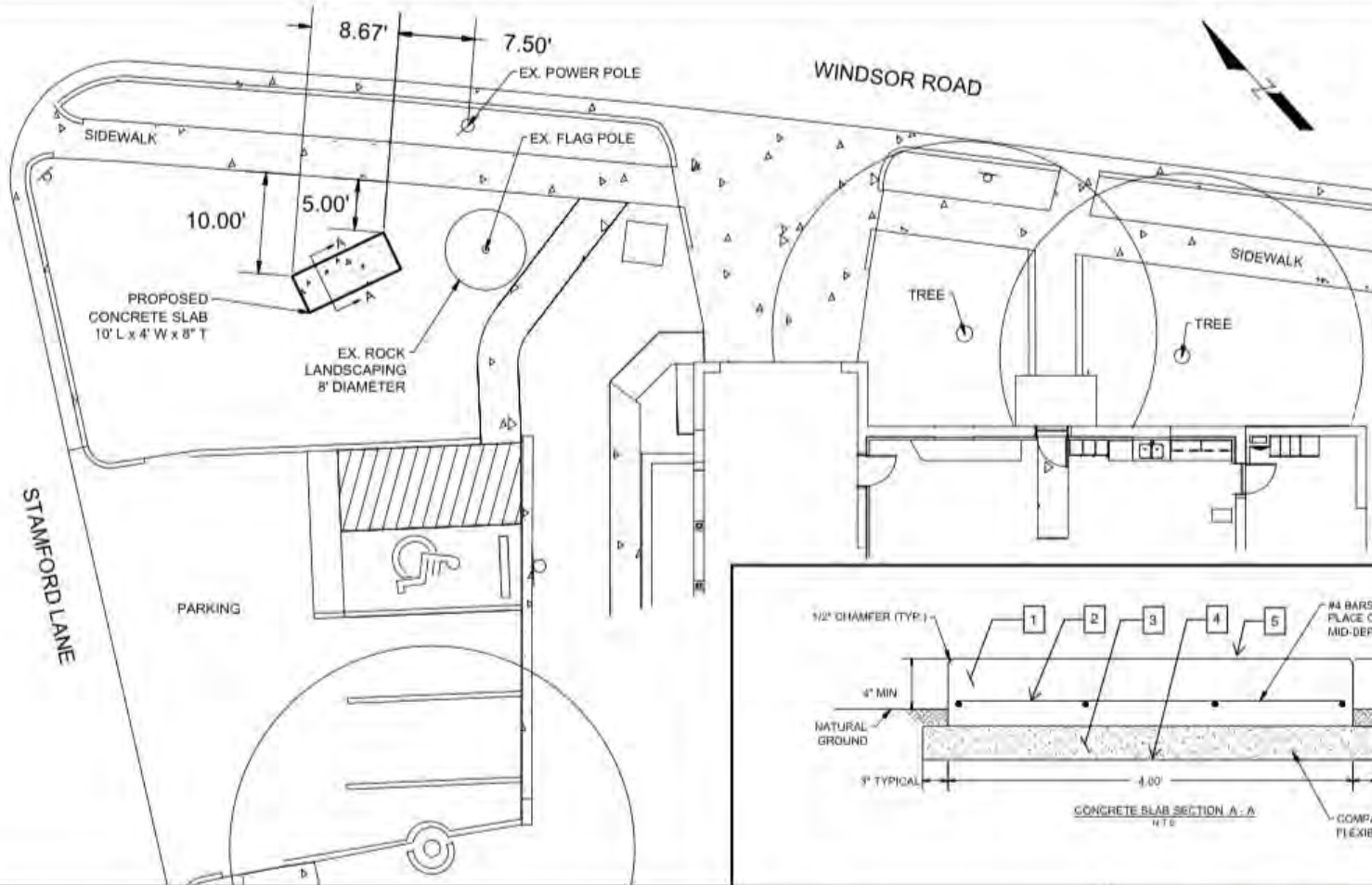
7'

15"

Base sculpted from same block as one piece

Concrete class A Reinforced with steel shall

Compacted Flexible Base



KEY NOTES:

1. CONCRETE CLASS A, 3600 PSI INSTALLED PER COA ITEM 360S CONCRETE PAVEMENT, MONOLITHIC FOUR, BROOM FINISH. 28-DAY CURE REQUIRED PRIOR TO SCULPTURE INSTALLION
2. REINFORCING STEEL SHALL BE GRADE 60 INSTALLED PER COA ITEM 406S REINFORCING STEEL
3. FLEXIBLE BASE MATERIAL INSTALLED PER COA ITEM 210S FLEXIBLE BASE
4. SUBGRADE SHALL BE COMPACTED. SOFT SPOTS REMOVED AND RECOMPACTED.
5. CONCRETE BONDING ADHESIVE QUICKCRETE OR APPROVED EQUAL INSTALL PER MANUFACTURERS RECOMMENDATIONS IN COORDINATION WITH SCULPTURE INSTALLION.

Foundation

View detail



DRAWN BY: ER

CHECKED BY: DC



AUSTIN FIRE STATION #10
3009 WINDSOR ROAD

CONCRETE SLAB
FOR STONE SCULPTURE



3-17-2022

03-17-2022

Notes about Foundation:

1. Flexible base, a type of gravel, to better support the concrete slab and sculpture.

2. Adhesive Quickcrete bonding adhesive

3. It's an industrial driveway design for commercial/industrial facilities so it will be fine for a 7 ton structure. Ours is 3.5 ton.

Plus, we beefed it up with the flexible base to keep the slab from moving too much with the shrinking and swelling of the soil due to dry/wet weather cycles.

The base material extends 3" beyond the edge of the slab to further isolate it from the soil movement.

4. The 3600 PSI concrete means that it has a strength of 3600 pounds per square inch of surface area for a 4" thick slab.

We have an 8" slab, steel bars and the flexible base.

As reference, most residential driveways are 4" thick, have a sand bedding and wire mesh, not steel reinforcing rods like this design has.

5. Another thing to keep in mind is since **the sculpture has**

a 6" base that is integral to the sculpture, i.e., its all one piece,

the load/weight of the hands is uniformly distributed through the 4" stone base to the concrete slab.

All to say there are no point loads from the "hands".



QUIKRETE® Concrete Bonding Adhesive (No. 9902) permanently bonds new concrete, plaster, and stucco to existing concrete, plaster, and stucco. Eliminates the need for roughing the surface before the application. Exceeds the performance requirements of ASTM C 1059 Type I and II.

[data sheet-concrete bonding adhesive 9902.pdf \(quikrete.com\)](#)

This exterior grade synthetic emulsion adheres new concrete, toppings and Portland cement plaster or repair material to floors, walls, sidewalks, silos, concrete pipes, concrete pavements, concrete and cinder blocks, curbs and steps.

It provides a permanent physical bond which is stronger than the material being bonded. There is no need for chipping, drilling or roughing the old surface before application.

. QUIKRETE® Concrete Bonding Adhesive meets or exceeds the requirements for ASTM C1059 Types I and II



Maintenance

Very Low maintenance required:

- *Apply sealer every 10 years
- *Change bulb every year
- *Change lamp every 10 years



I GOT YOU
Final Maquette





Tentative Schedule

July – August 2021

Embedded Time Service

October 2021

Mid Design Review

February 2022

Arts Conservation Review

March 2022

Final Design Approval by AIPP and Arts Commission

April/May 2022

Execute commission contract with artist

June 2022

Initiate Fabrication

July 2022

Build foundation, electricity

September 2022

Artwork installation and finishing landscape.

GOT YOU

Estimate budget

1. Project Design and Administration				
1.1	Artists design fee			16,000
1.2	Artists design expenses			4,000
1.3	Project insurance			472
1.4	Engineering expenses			4,000
1.5	General contractor			3,500
1.6	Project management			3,000
Sub Total 1				30,972
2. Materials and Fabrication				
2.1	Block of stone and laser work			37,000
2.2	Block for base			5,000
2.3	Landscape materials			300
2.4	Pedestal for small piece			500
2.5	Maquette			3,700
Sub Total 2				46,500
3. Delivery and Installation				
3.1	Site preparation and foundation			10,000
3.2	Landscape labor			300
3.3	Tools rental			2,000
3.4	Contingency			3,500
3.5	Transport			5,000
Sub Total 3				20,800
4. Maintenance materials to be provided				
4.1	Sealer			1,200
4.2	Lamp and bulbs			528
Sub Total 4				1,728
General Total				100,000

Thank you!!!