

Northern Walnut Creek Trail

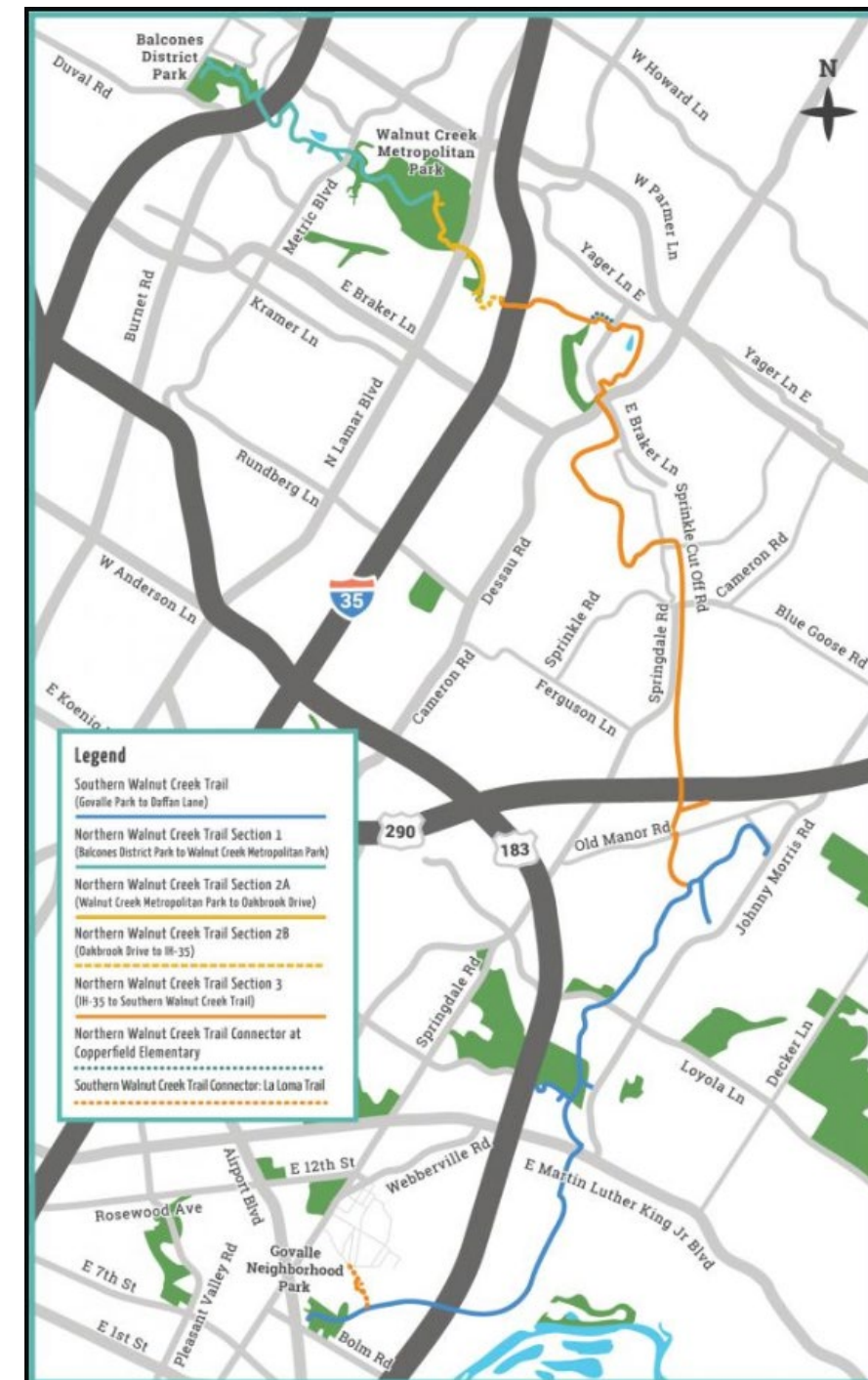
Pedestrian Advisory Council
July 2022

austin
MOBILITY BONDS



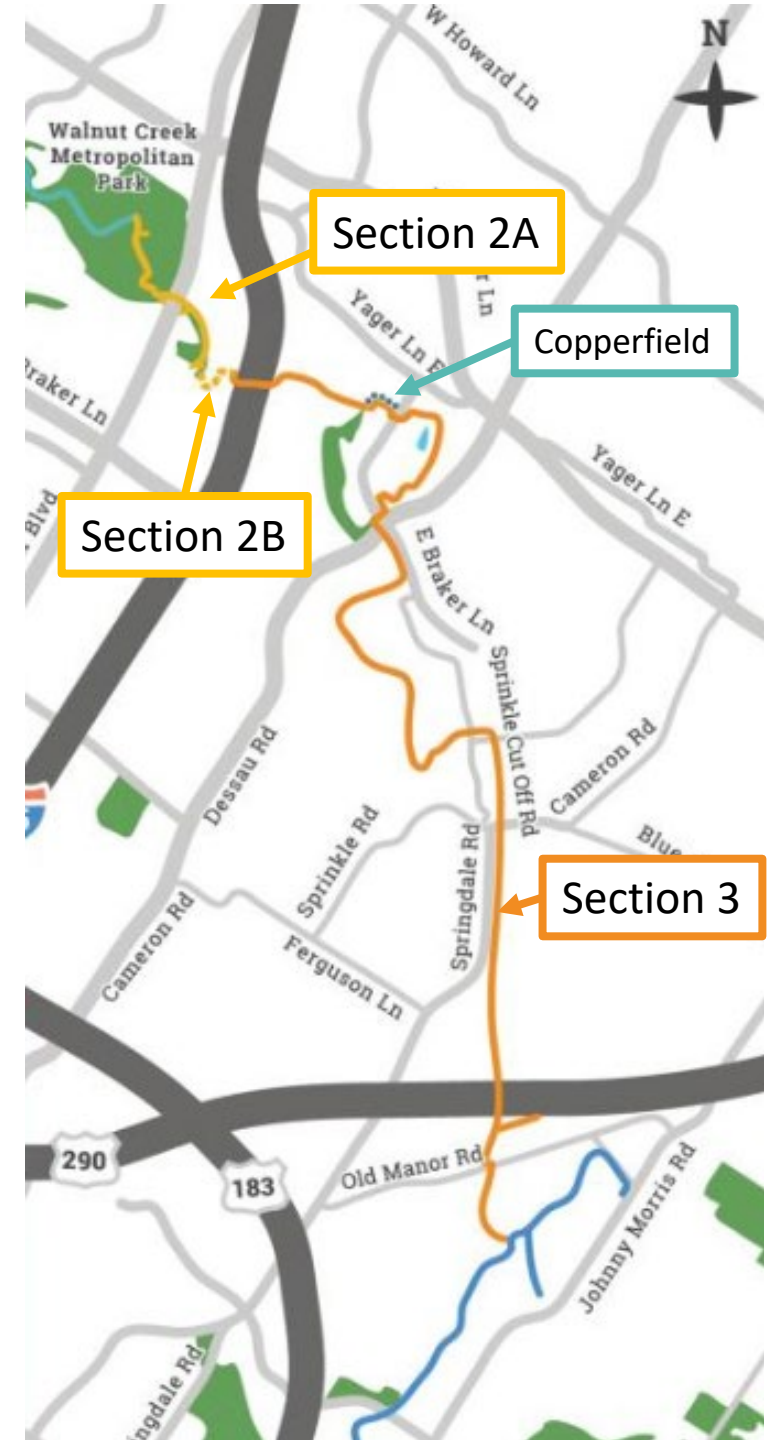
Northern Walnut Creek Trail

- Tier 1 (high priority) trail
- Anticipated 19 miles long
- Balcones District Park in North Austin to Govalle Neighborhood Park in East Austin
- Part of the “Big Loop”



Northern Walnut Creek Trail

- Section 2A:
 - Walnut Creek Metropolitan Park to Oakbrook Drive
 - In Construction
- Section 2B:
 - Walnut Bluffs Trailhead to IH-35
 - In PER & Design
- Copperfield Elementary Connector
 - Part of Section 3
 - In Construction
- Section 3:
 - IH-35 to Southern Walnut Creek Trail
 - In Design & PER



NWCT Section 2A - Construction

Project Scope

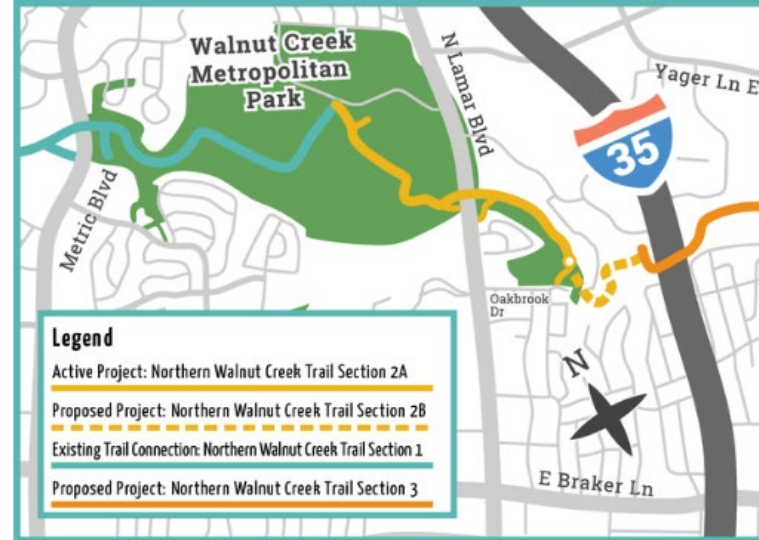
- 1.3 miles from Walnut Creek Metropolitan Park to Oakbrook Drive
- 2 bridges + 4 boardwalks
- Trail crossing under North Lamar Boulevard and connecting to future CPO improvements

Status

- Construction: Fall 2021 – Fall 2022
- Over 5,300 linear feet of trail built
- Bridge fabrication underway, bridges expected to be set in Summer 2022

Schedule

- Trail expected to be open to the public by the end of the year



Trail turnaround near Oakbrook Drive



Trail undercrossing at North Lamar Blvd.



Trail in Walnut Creek Metro Park

NWCT Section 2B - PER/Design

Project Scope

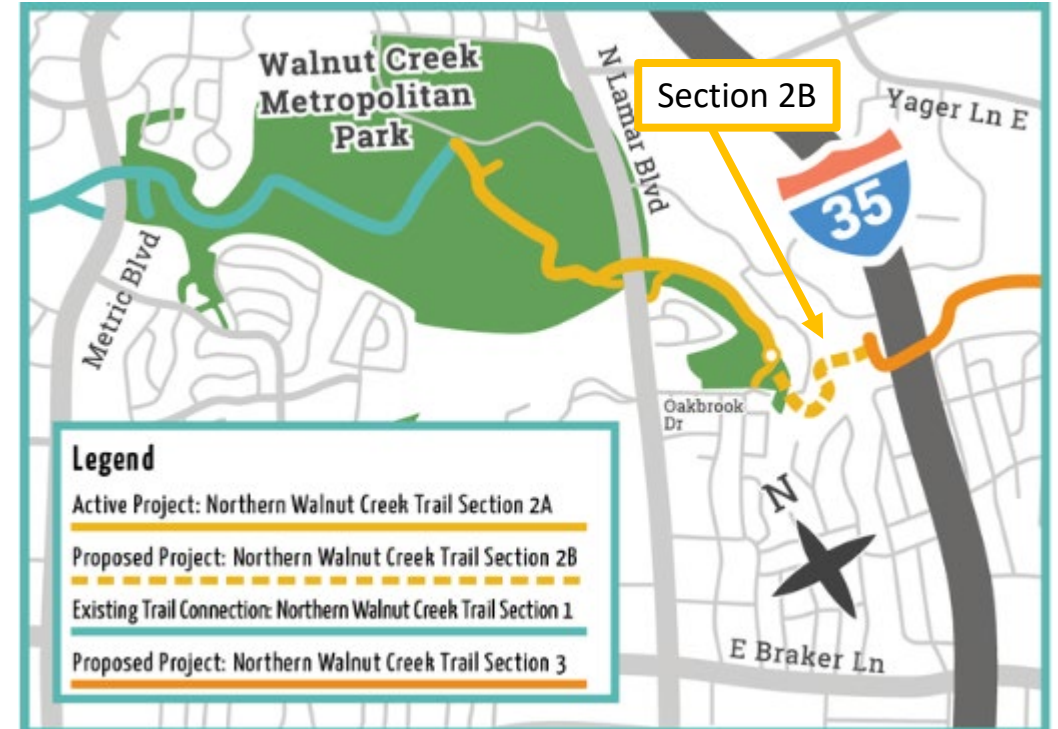
- 0.4 miles from turnaround at Oakbrook Drive to I-35

Status

- PER & Design
- Challenging creek crossing with long-term solution requiring real estate acquisition
- Exploring possible interim route using North Lamar CPO improvements + on-street connections
- Design kicking off for trail connection from Park Thirty-Five Circle to I-35 undercrossing

Schedule

- Design ongoing through Summer 2023



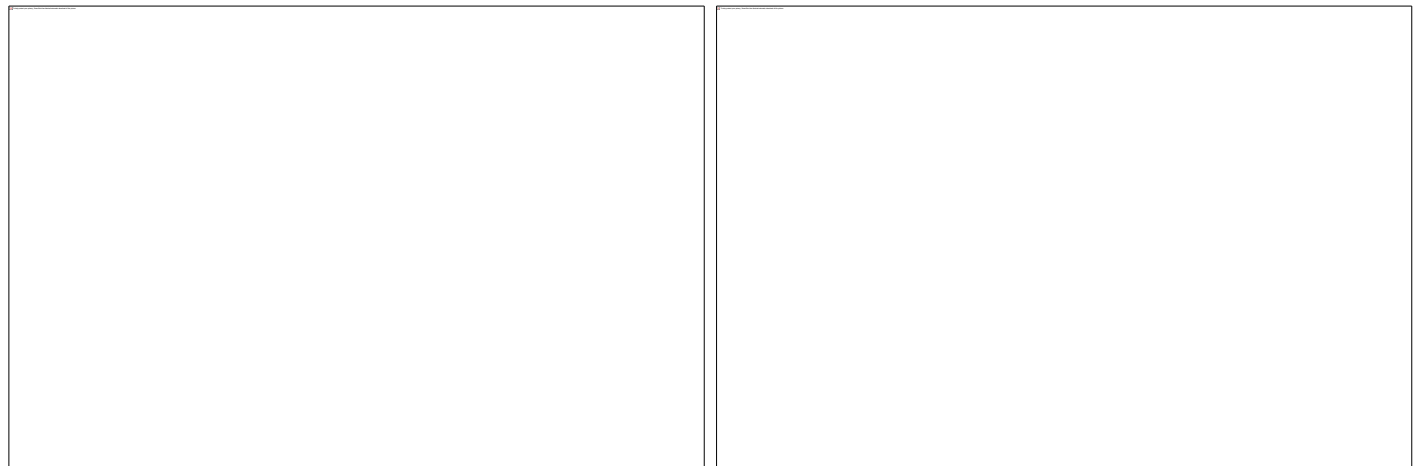
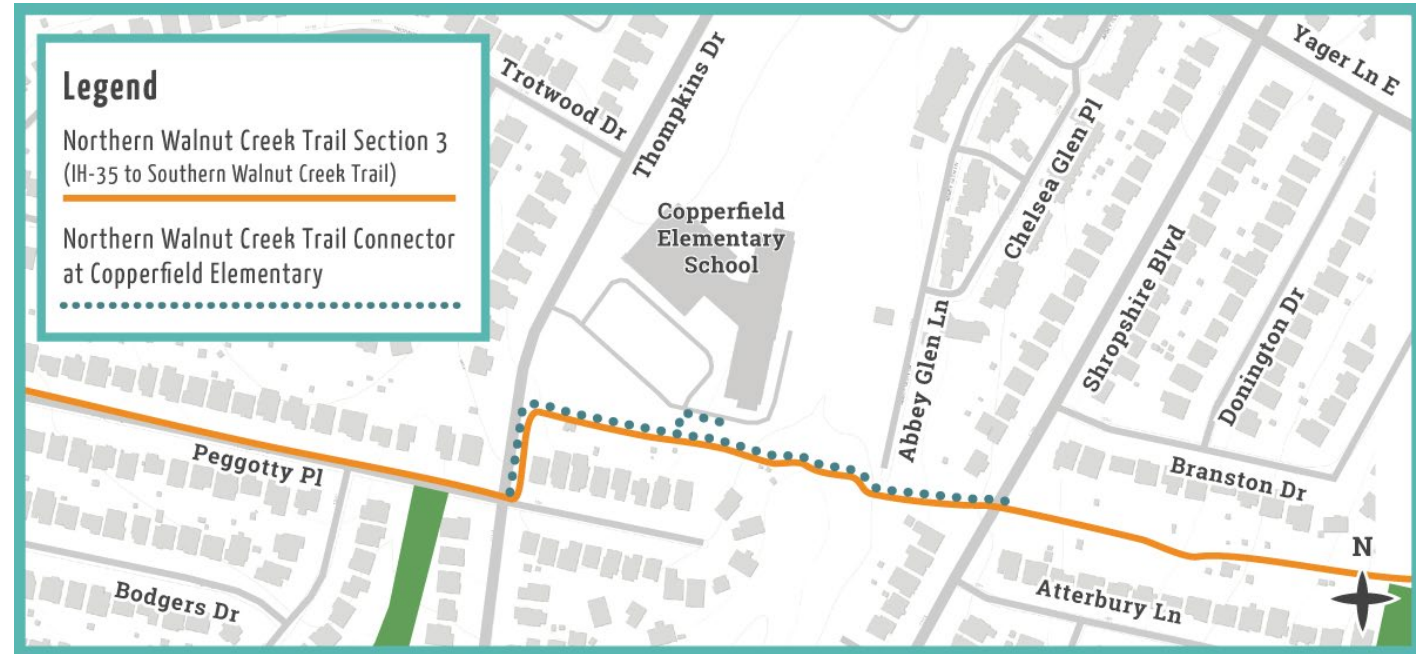
Copperfield Elementary - Construction

Project Scope

- 12-15 ft wide concrete trail from Thompkins Drive to Shropshire Lane
- Repair of a collapsed creek culvert
- Intersection improvements for crossing Thompkins/Peggotty and Shropshire Lane
- Partnership with funding from multiple programs from Mobility Bonds

Status/Schedule

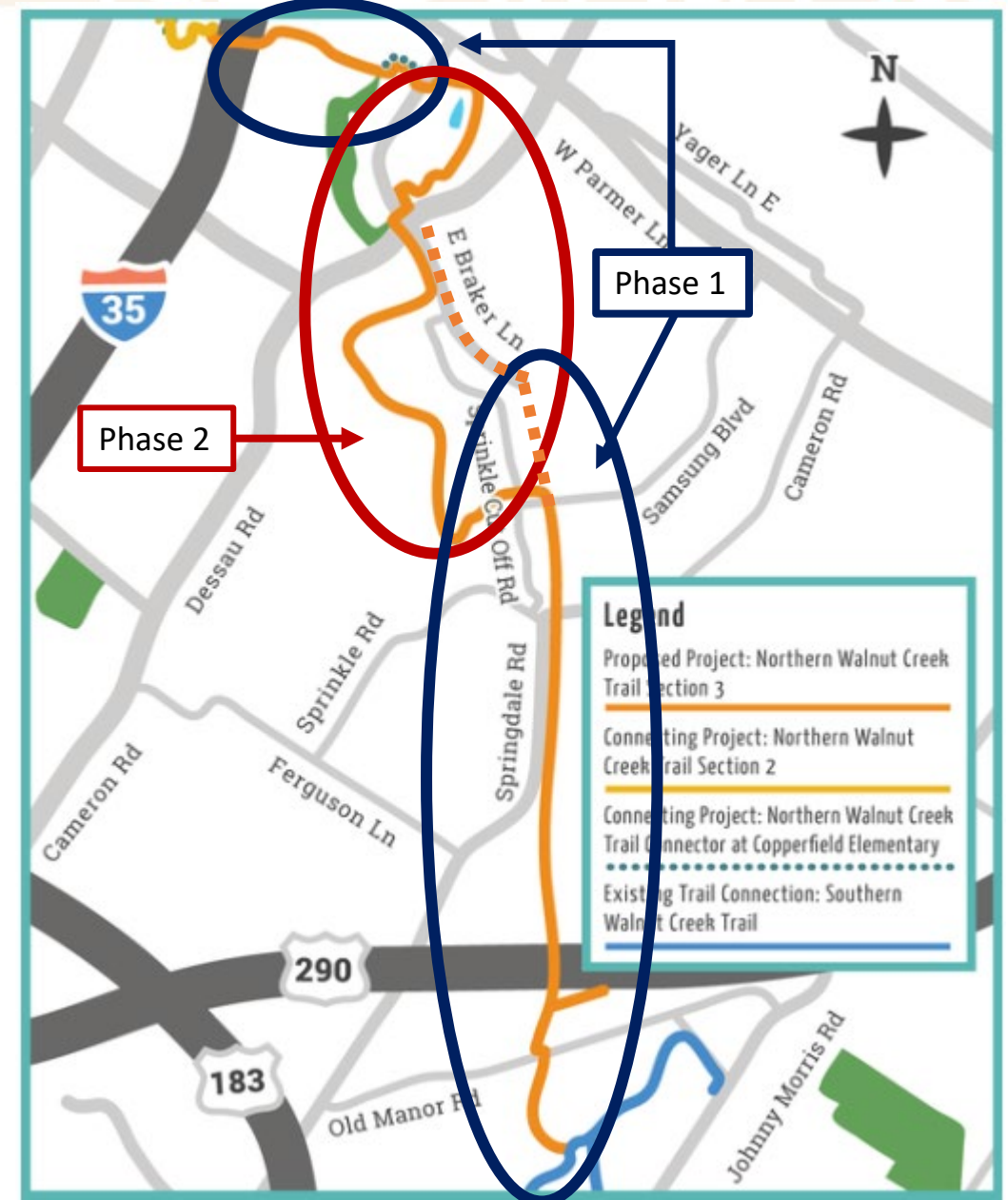
- Construction began in late Spring and is expected to be complete in Fall 2022



An excavator grades the ground to create a smooth and level base for the new trail (left). A surveyor measures the land slope (right).

NWCT Section 3

- Proposed 8-mile segment
- I-35 to Southern Walnut Creek Trail
- Separated into phases



NWCT Section 3 - Phase 1

Project Scope – Phase 1

- Southern Walnut Creek Trail to Braker Lane
- I-35 to Copperfield Connector

Status

- Design kicked off May 2022
- Design completion expected by Summer 2023
- Construction expected Fall 2023 – Fall 2025



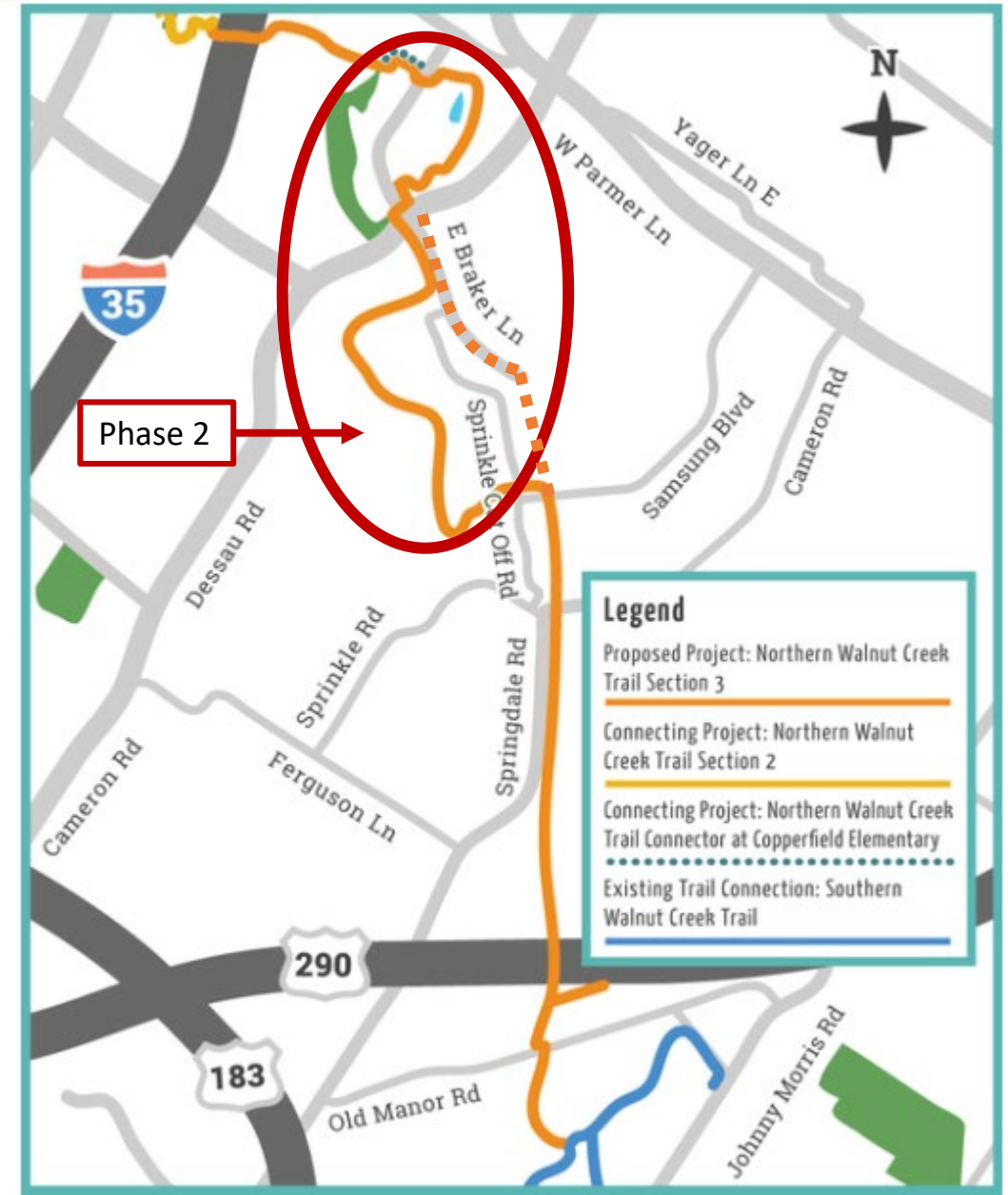
NWCT Section 3 - Phase 2

Project Scope – Phase 2

- Samsung Blvd. to Braker Lane and Dessau Rd.
- Sprinkle Cut Off Rd to Dessau Rd.
- Dessau Rd. to Copperfield Connector

Status

- Feasibility assessment underway, expected completion Winter 2022
- Challenges – Environmental Constraints and Acquisition of Easements



Questions?

Project Contacts:

Northern Walnut Creek Trail 2A and Copperfield

Dylan Johnstone, AICP

Urban Trails Project Coordinator, Public Works Department

dylan.johnstone@austintexas.gov

512-974-7021

Northern Walnut Creek Trail 2B and 3

Rachel Thomas

Urban Trails Project Coordinator, Public Works Department

Rachel.thomas@austintexas.gov

512-978-1852

[AustinTexas.gov/UrbanTrails](https://austintexas.gov/UrbanTrails)

