

# 5709 SAM HOUSTON CIRCLE BOAT DOCK

SP-2021-0300D

*Eric Brown*

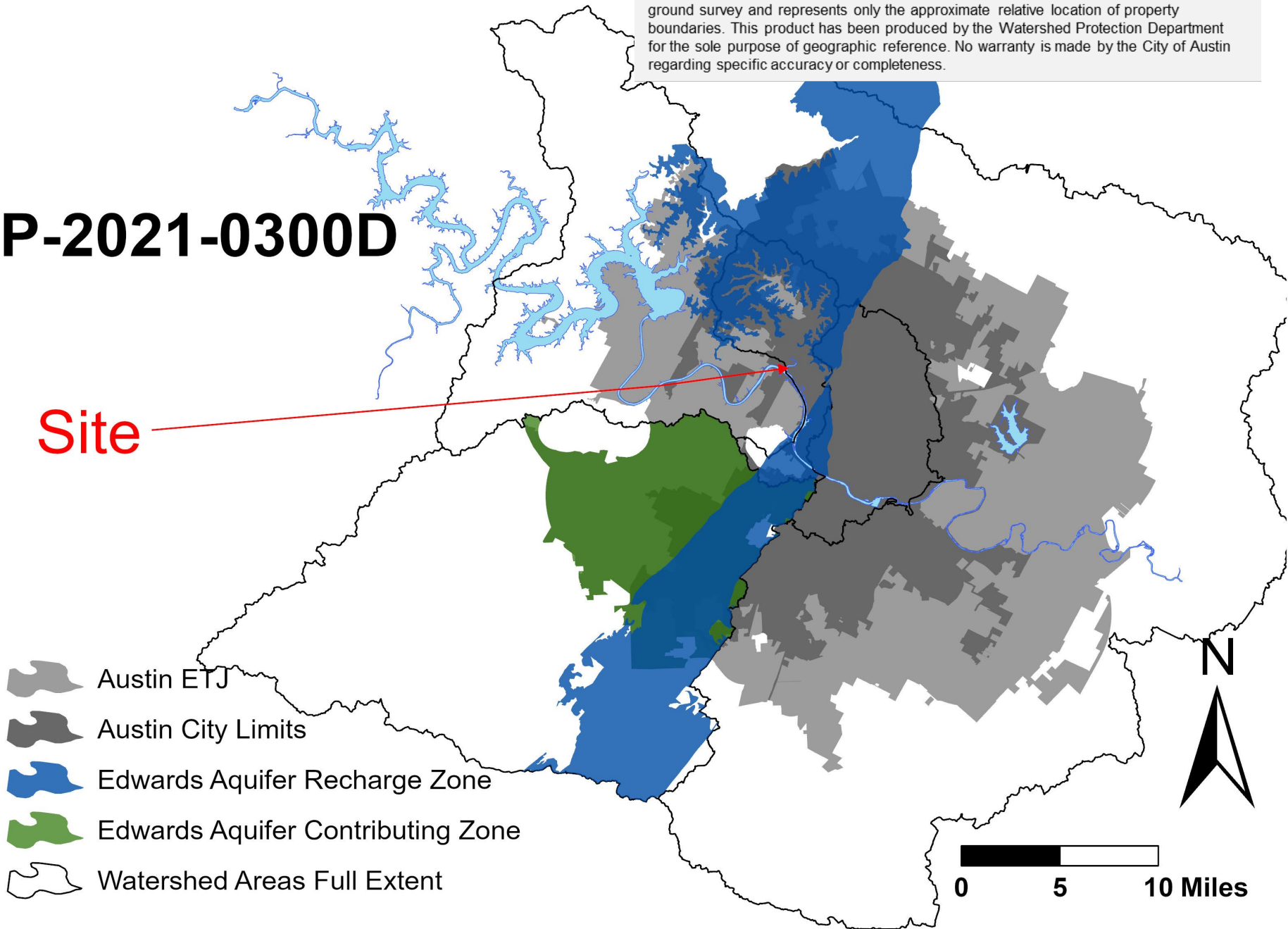
*Hydrogeologic Reviewer*

*Watershed Protection Department*

This product is for informational purposes and may not have been prepared for or be suitable for legal, engineering, or surveying purposes. It does not represent an on-the-ground survey and represents only the approximate relative location of property boundaries. This product has been produced by the Watershed Protection Department for the sole purpose of geographic reference. No warranty is made by the City of Austin regarding specific accuracy or completeness.

# SP-2021-0300D

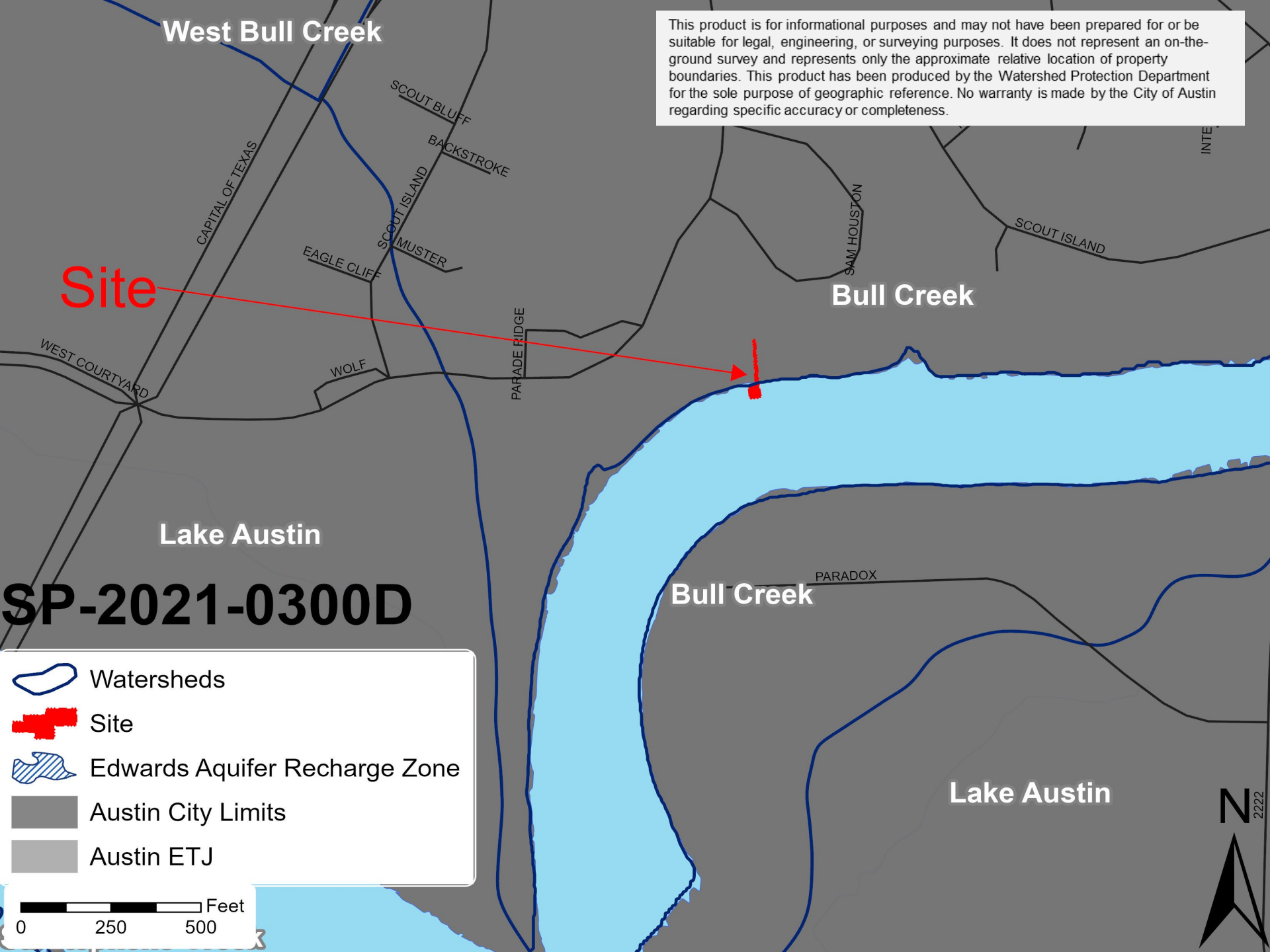
Site



# **PROPERTY DATA**

- LAKE AUSTIN WATERSHED
- WATER SUPPLY RURAL CLASSIFICATION
- CRITICAL ENVIRONMENTAL FEATURES ON SITE
- COUNCIL DISTRICT 10

This product is for informational purposes and may not have been prepared for or be suitable for legal, engineering, or surveying purposes. It does not represent an on-the-ground survey and represents only the approximate relative location of property boundaries. This product has been produced by the Watershed Protection Department for the sole purpose of geographic reference. No warranty is made by the City of Austin regarding specific accuracy or completeness.



West Bull Creek

Site

Bull Creek

Lake Austin

SP-2021-0300D

Bull Creek

Lake Austin

- Watersheds
- Site
- Edwards Aquifer Recharge Zone
- Austin City Limits
- Austin ETJ

0 250 500 Feet





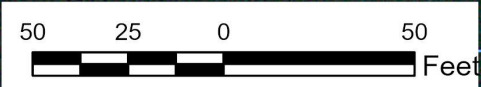
 Site

 Springs/Seeps

 Rimrock(s)

 Wetlands

This product is for informational purposes and may not have been prepared for or be suitable for legal, engineering, or surveying purposes. It does not represent an on-the-ground survey and represents only the approximate relative location of property boundaries. This product has been produced by the Watershed Protection Department for the sole purpose of geographic reference. No warranty is made by the City of Austin regarding specific accuracy or completeness.







Site



Springs/Seeps

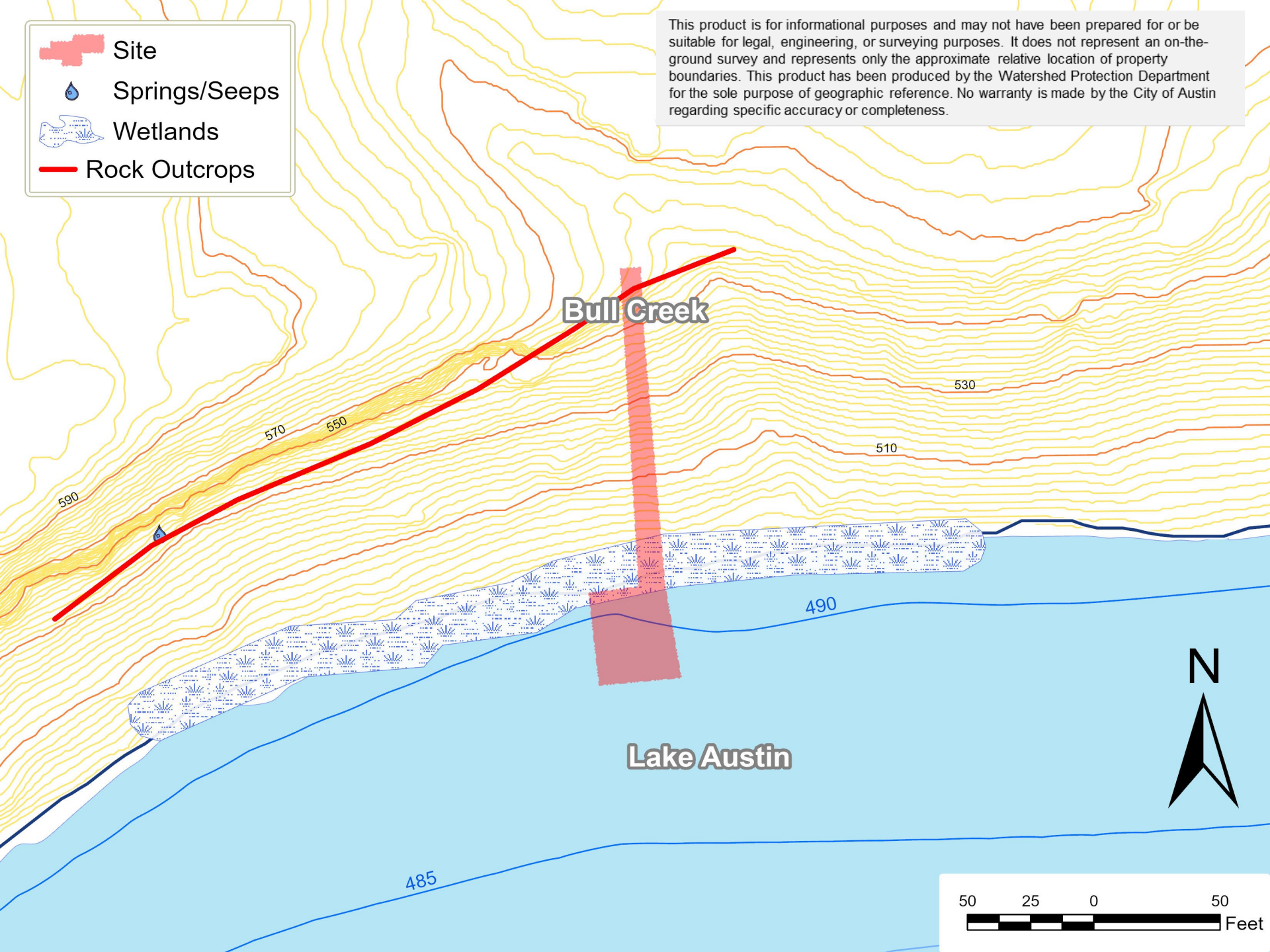


Wetlands



Rock Outcrops

This product is for informational purposes and may not have been prepared for or be suitable for legal, engineering, or surveying purposes. It does not represent an on-the-ground survey and represents only the approximate relative location of property boundaries. This product has been produced by the Watershed Protection Department for the sole purpose of geographic reference. No warranty is made by the City of Austin regarding specific accuracy or completeness.



# **BACKGROUND**

- BOAT DOCK ON THE LAKE
- NEAR RIMROCK AND SEEP
- BRINGING EXISTING NON-COMPLIANT DOCK INTO COMPLIANCE

# **CODE REFERENCE**

- TITLE 25 – LAND DEVELOPMENT CODE,  
CHAPTER 25-8-281(C)(2)(B).



# **VARIANCE REQUEST**

REQUEST TO VARY FROM LDC 25-8-  
281(C)(2)(B) TO ALLOW CONSTRUCTION  
WITHIN 150-FOOT OF CRITICAL  
ENVIRONMENTAL FEATURE (CEF) BUFFERS.



Rimrock

Seep



Wetland  
Fringe





Wetland  
Fringe

## **VARIANCE RECOMMENDATION**

FINDING OF FACTS HAVE BEEN MET.

STAFF RECOMMENDS THE APPROVAL OF THIS  
VARIANCE WITH THE CONDITION THAT ALL  
CONSTRUCTION OF THE BOAT DOCK BE  
COMPLETED BY BARGE.

**QUESTIONS?**

