



22.08.04

REFRACTION AI

Austin City Council
Mobility Committee

Proud to call Austin home



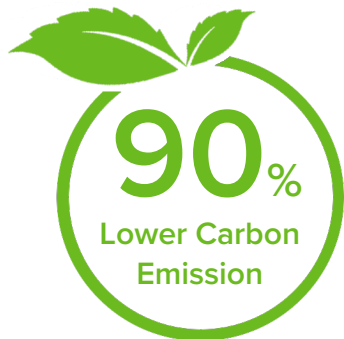


Thousands of deliveries, thousands of customers



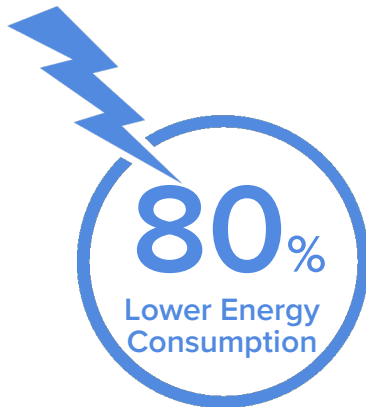


A sustainable, energy-efficient approach



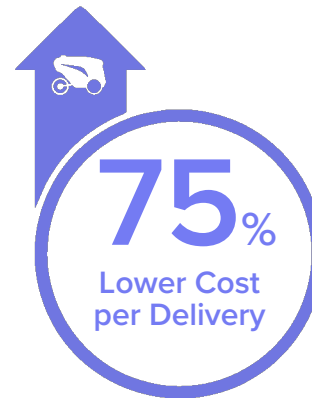
Sustainable

- Reduces pollution and congestion
- Improves safety and livability in our city
- ZERO vehicle emissions
- Only gets better with a shift to renewables



Efficient

- Refraction AI right-sizes the approach
- No SUVs or full-size EVs delivering salads!
- Lower costs and more deliveries
- Relief for a hard-working power grid



Scalable

- Demand for last-mile delivery is expected to grow at 25% CAGR through 2030
- Lower costs will help to meet surging demand
- Better goods distribution for more communities means greater access for Austinites
- A more inclusive Austin



Committed to safety and civility



Solving for safety first

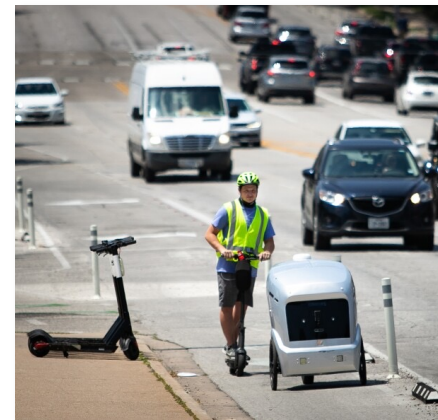
- ❑ Remote supervision
- ❑ Physical presence when necessary
- ❑ Bike lanes and road shoulders
- ❑ Stops on a dime

“Like a polite bicyclist”

- ❑ Yields right-of way to pedestrians, bicyclists, motor vehicles
- ❑ Defers to human operators
- ❑ Travels at appropriate speeds

Extensive training

- ❑ Remote operator certification
- ❑ Mandatory re-cert





Committed to helping build a better Austin



Sustainability

- ❑ Cleaner air
- ❑ Support for more EV infrastructure
- ❑ Reduced stress on the power grid

Access & Inclusion

- ❑ More equitable distribution of goods
- ❑ Richer, closer communities
- ❑ Retire-in-place options
- ❑ Medical and homebound support

Economic Growth

- ❑ Employment
- ❑ Technology development



Proud to call Austin home



REFRACTION AI

