

## City of Austin Mobility Outcome Report

Presented by Assistant City Manager Gina Fiandaca

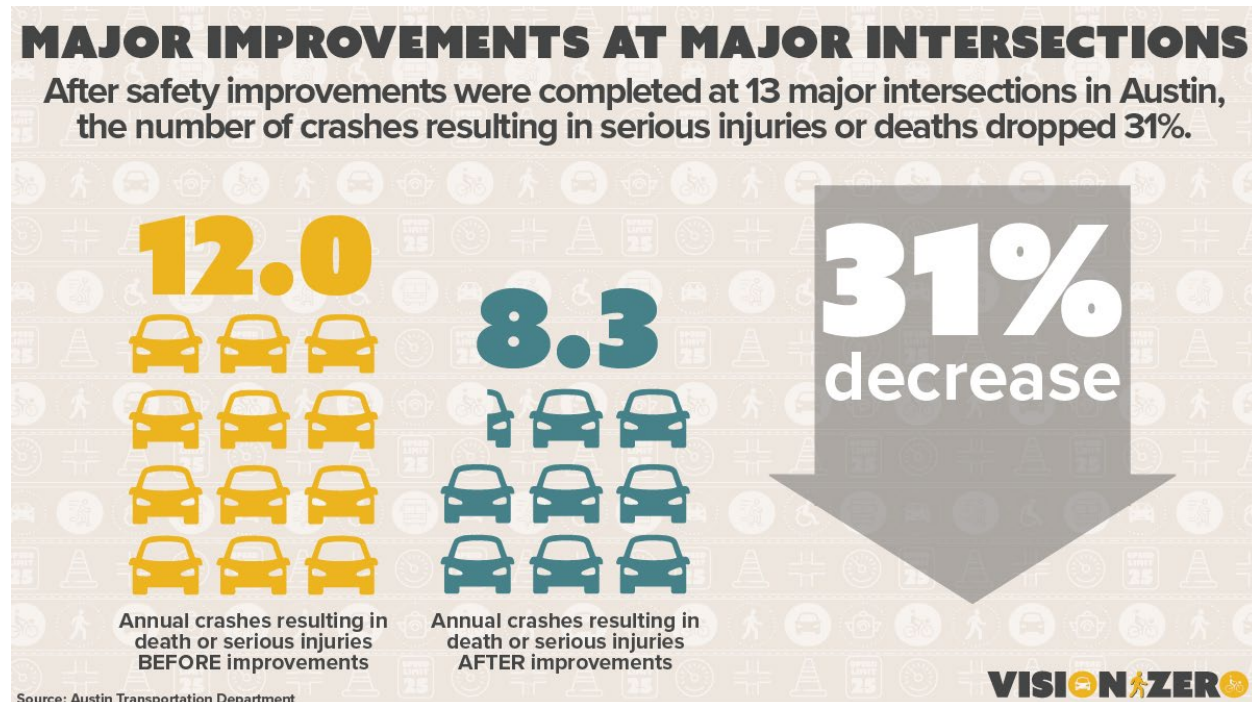
August 2022



MOBILITY

### Monthly Highlights

#### Vision Zero: Intersection Safety Improvements



Between 2017 and 2021, more than one-third of crashes that resulted in serious injury or death in Austin occurred at signalized intersections. Early data in a new [Vision Zero Analytics report](#) show promising results at completed intersections.

Of the 13 intersections with at least one year of crash data following project completion, the annualized data showed a combined 30% reduction in total crashes and a 31% reduction in crashes resulting in serious injury or death. The serious injury or fatal crashes declined from an average of 12 per year to 8.3 per year. ATD also analyzed a control group of similar intersections across the city to better contextualize broader crash trends in Austin over the same period. At those locations, total crashes per year decreased by 4% and serious injury and fatal crashes increased by 8%.

Through funding from the City budget and the [2016, 2018, and 2020 Mobility Bonds](#), Austin Transportation is working to improve safety at dozens of high-crash intersections as part of its [Vision Zero](#) goal of eliminating serious injuries and fatalities on Austin's roadways. Since 2016, ATD has completed work at 19 major intersections.

#### Terminal Upgrades at AUS: New Baggage Handling System

The Planning & Development team at AUS and our construction partners have been working on an improvement project to upgrade the "inline" (or "outbound") baggage handling system; the AUS inline system refers to the journey your luggage takes from the ticket counter, through the TSA luggage screening process, and to the airplane. Currently, the inline baggage handling system at AUS has



processed AUS passenger bags for over two decades, but now outdated parts and processes need to be upgraded in order to improve the system overall. The upgrades include adding more conveyer belts and re-connecting those belts in a more efficient way which will allow for more bags to be processed per hour. Currently, the system is able to process 1600 bags per hour. With phase 1 improvements the new system will process 2400 bags per hour, and by phase 2 that number will grow to 4200 bags per hour!

## Americans with Disabilities Act Turns 32

July 26 marked 32 years since Congress passed the Americans with Disabilities Act, or ADA, protecting the rights of people with disabilities. A key element of the act is ensuring people with disabilities have equal access to public spaces. David Ondich, pictured with his service animal, Poomba, is the City's ADA Program Administrator. He helps people across Austin have reasonable accommodations in the workplace and access to accessibility resources to overcome barriers.

Ondich visited the area of St Johns and Blessing Aves. recently ([photo album available here](#)), where Austin Transportation, in partnership with Austin Public Works and the Corridor Program Office, improved accessibility by installing ADA-accessible crosswalks, a floating bus stop and other enhancements. This year alone, the City is on track to complete more than 1,000 new ADA-compliant curb ramps. That's about double the delivery rate of previous years!



Since 2005, Austin Public Works' [Sidewalk Program](#) has built or rehabilitated about 270 miles of sidewalks, that's the difference from Austin to Orange, Texas. Just last year, the City completed more than 30 miles of sidewalks, a 50% increase over 2020 and double the pace three years ago. The City adopted its first Sidewalk Plan in 2009 and incorporated the ADA Transition Plan in the 2016 Sidewalk Plan update, which serves as Austin's ADA Transition Plan. As part of Accessibility and equity have been key pillars in the ongoing update of that plan through [ATX Walk Bike Roll](#).

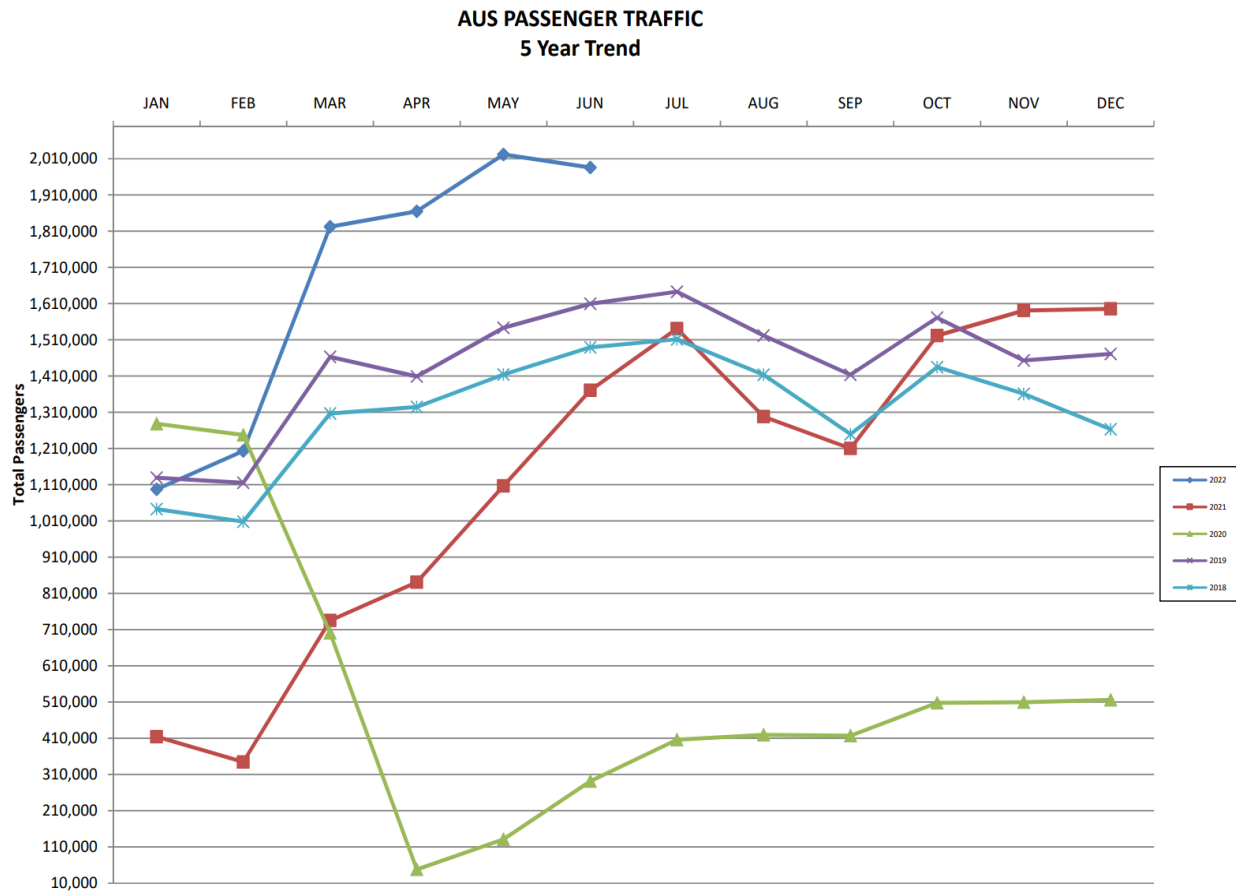
Austin Transportation has made audible crosswalks a standard over the past decade. In addition to providing the name of the cross streets, pedestrian signal buttons feature braille for those who are blind or visually impaired, as well as a persistent beep to locate the signal button. Updated curb ramps include



truncated domes, which act as a detectable warning surface that can be seen, felt and heard. The [Americans with Disabilities Act Office](#) ensures ADA compliance across the city of Austin.

## Traffic Picking Up in the Skies

Total passenger traffic for June 2022 was up 44.88% compared to June 2021 - 1,985,801 passengers were served through the Barbara Jordan Terminal in June alone. Domestic and International carriers saw a rise in passengers: *Southwest Airlines* passengers totaled 747,869, up 55.4%; *American Airlines* passengers totaled 507,215, up 61.6%; *Delta Air Lines* passengers totaled 233,754, up 22.7%; *United Airlines* passengers totaled 200,788, up 34.1%; *British Airways* passengers totaled 17,364; *Air Canada* passengers totaled 10,139; *KLM Royal Dutch Airlines* passengers totaled 6,687; *Virgin Atlantic* passengers totaled 6,385; *Lufthansa* passengers totaled 6,036; *Aeromexico* passengers totaled 5,083.

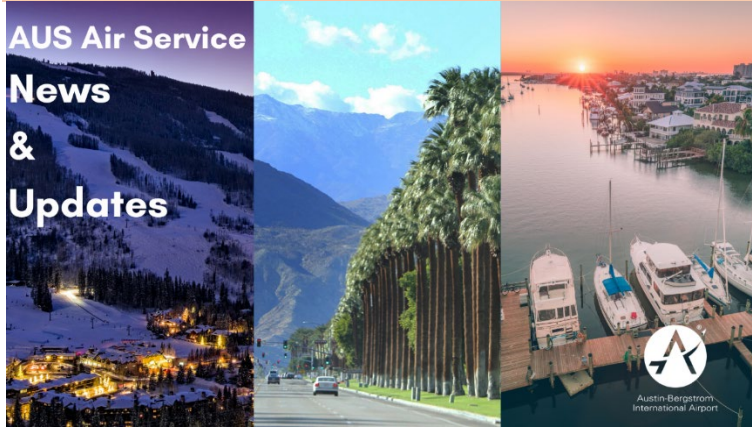




## Looking Ahead

### Non-Stop Flights from AUS

#### AUS Air Service News & Updates



Austin-Bergstrom International Airport is excited to announce with its airline partners several new nonstop flights for Austin and Central Texas travelers heading into winter. Tickets are on sale now to travel from the desert of Palm Springs, CA, to the mountains of Colorado and in between.

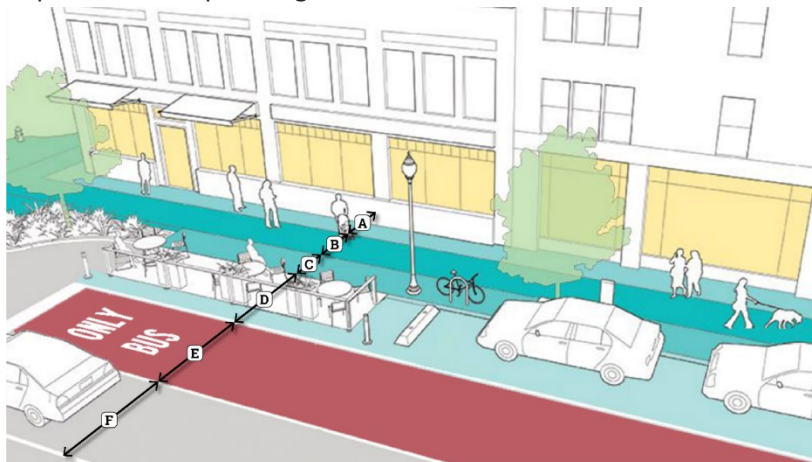
On December 15, 2022, American Airlines will start service to Vail, Colorado and resume service to Fort Myers, Florida. Additionally, the airline

will start service to Palm Springs and resume its previous service to Sarasota, FL on November 17, 2022.

Southwest Airlines recently announced a new service to Montrose, Colorado, a gateway to Telluride and Crested Butte, which will start January 7, 2023.

### Downtown Austin Streetscapes – We want your feedback!

Efforts are underway to review and enhance the look, feel and function of Austin's downtown street grid. The Austin Core Transportation (ACT) Plan will work through identified needs in our downtown transportation network, coordinate with other ongoing efforts related to land use and transportation in the area, and present feasible options for improving mobility and access downtown. The ACT Plan will result in a list of projects to help us achieve our mobility vision for downtown, as well as an implementation plan to guide us.



An online survey launched today to gather feedback from the community about what people value most in a downtown street. That feedback, which will continue through September, will help craft draft proposals for enhancing downtown streets. The survey is available in [English](#) and [Spanish](#). You can also [sign up for stakeholder updates](#) or learn more on the [ACT Plan website](#).

## Partner Recap

**McKalla Station at Q2 Stadium Groundbreaking**

The City of Austin joined [CapMetro](#) and the [Austin Transit Partnership](#) recently to celebrated the groundbreaking of a new [MetroRail](#) station that will provide improved mobility options for the North Austin community and bring soccer fans directly to and from Austin FC matches. McKalla Station will be located on the east side of Q2 Stadium. It is one of two new Red Line stations CapMetro is set to open soon. The other new stop, [Broadmoor Station](#), will be located near the forthcoming Uptown ATX development on Burnet Road.

The City is working on several projects in the Burnet Road and Q2 Stadium area to support CapMetro's work and Project Connect. McKalla Station will provide pedestrian and bike-friendly pathways, and Austin's [Public Works Department](#) (PWD) will construct a segment of the Red Line Trail as part of the station to connect the existing trail through Q2 Stadium north to Braker Lane.

North of Braker Lane, PWD's Urban Trails Program is designing a 1.7-mile section of the planned Red Line Trail, which will create connections between McKalla Station, Q2 Stadium, the upcoming Broadmoor Station and the Northern Walnut Creek Trail. Meanwhile, the City's [Corridor Program Office](#) plans to construct a wider shared-use path along Burnet Road near Q2 Stadium.

McKalla Station is set to open in late 2023 followed by Broadmoor Station in early 2024. You can learn more about McKalla Station at the [Project Connect website](#).



MOBILITY

## Community Resources

[Weekly Mobility Newsletter Sign Up](#)

[2016 Bond Programs and Projects](#)

[Capital Projects Explorer](#)

[Austin Mobility Data and Performance Hub](#)

[Austin-Bergstrom International Airport](#)

[Upcoming Sidewalk Projects](#)

[Absent Sidewalk Map and Prioritization](#)

[Street Preventative Maintenance](#)

[Safe Ride Home Resources](#)

[Special Event Road Closures](#)