



Brownie Neighborhood Park,  
Emma Long Metropolitan Park,  
Highland Neighborhood Park and Reznicek Fields, &  
Oertli Neighborhood Park  
Art in Public Places Projects  
Selection Process Recommendations

ARTS COMMISSION

AUGUST 15, 2022

# JURY

- Estéban Hinojosa, Brownie Community Member
- Isa Boonto, Artist & Brownie Community Member
- Melissa Gray, Highland Community Member
- Kate Garza, Highland Neighborhood Association and Highland Community Member
- Charles Peveto, Old Austin Neighborhood Association and Duncan Community Member
- Sierra DaSilva, Shoal Creek Conservancy and Duncan Community Member
- Cristie Purple, Oertli Community Member

## Advisors:

- Reynaldo Hernandez, Project Manager, PARD
- Scott Sinn, Project Manager, PARD
- Patrick Beyer, Project Manager, PARD
- James Wheeler, Project Manager, PARD
- Acia Gray, Austin Arts Commission Liaison

## AIPP Staff:

- Constance White, AIPP Program Manager
- Curt Gettman, AIPP Sr. Project Manager
- Ryan Runcie, AIPP Project Manager
- Alex Irrera, AIPP Project Manager

# REQUEST FOR QUALIFICATIONS

## ARTIST ELIGIBILITY

Open to local artists in the 2021-2023 Pre-Qualified Artist Pool.

## APPLICATION PERIOD

- Opt-in period 6/7/22 to 6/23/22
- Artist Information Meeting 6/14/22
- 40 local artists opted-in (36 eligible)
- Applications reviewed & narrowed 7/21/22

## SELECTION CRITERIA

- Artistic merit and technical expertise;
- Ability to engage the community in which the artwork is being proposed; and
- Demonstrated success completing works of art

## 21-23 Pre-Qual (Local) | 5 Parks Applicant Demographics

	Local 21-23 Pre-Qual Pool (163)	Local 21-23 Pre-Qual Pool	Local 21-23 Pre- Qual Pool Opt-In (40)	Local 21-23 Pre- Qual Pool Opt-In	Brownie, Emma Long, Highland, & Oertli Finalists (8)	Brownie, Emma Long, Highland, & Oertli Finalists
Asian*	8	5%	1	3%	0	0%
Black*	23	14%	3	8%	1	13%
Hispanic/ Latino*	32	20%	6	15%	1	13%
Native American*	9	6%	2	5%	1	13%
White*	84	52%	24	60%	5	63%
Native Hawaiian or Other Pacific Islander*	2	1%	0	0%	0	0%
Middle Eastern or North African*	5	3%	0	0%	0	0%
Non-Disclose / Other*	33	20%	7	18%	1	13%
BIPOC	64	39%	13	33%	3	38%
Male Only	68	42%	16	40%	3	38%
Female or Team w/ Female	76	47%	22	55%	5	63%
Gender-nonconforming, Genderqueer	2	1%	0	0%	0	0%
Transgender	1	1%	0	0%	0	0%
Unknown	16	10%	2	5%	0	0%

## Demographics

*\*Ethnic representation of applicants and team members (note: multi-racial individuals could choose from multiple categories, not a "head count")*

## 21-23 Pre-Qual (Local) | 5 Parks Applicant Demographics

	Local 21-23 Pre-Qual Pool (163)	Local 21-23 Pre-Qual Pool	Local 21-23 Pre- Qual Pool Opt-In (40)	Local 21-23 Pre- Qual Pool Opt-In	Brownie, Emma Long, Highland, & Oertli Finalists (8)	Brownie, Emma Long, Highland, & Oertli Finalists
Veteran	2	1%	0	0%	0	0%
Non-Veteran	141	87%	40	100%	8	100%
Unknown	20	12%	0	0%	0	0%
LGBTQIA	20	12%	5	13%	2	25%
Not-LGBTQIA	100	61%	30	75%	6	75%
Unknown	43	26%	5	13%	0	0%
Disability	6	4%	3	8%	0	0%
Not-Disability	114	70%	32	80%	8	100%
Unknown	43	26%	5	13%	0	0%

## 2021

- AIPP community engagement

## 2022

### April

- Prospectus approval

### May

- Q2 Opt-ins released

### June

- Artist Information Session
- Opt-in closes

### July

- Artist Interviews & Selection

## August

- Artist Selection Recommendation approval

### October

- Artist under Contract
- Project Kick-off

### Nov-Dec

- Community Engagement

## 2023

### January

- Community Engagement

### February

- Mid-Design Review

### April

- Conservation Review

### May

- RAS Review & User Department Evaluation

### June

- Final Design for Approval
- Notice to Proceed for Fabrication

# Brownie Neighborhood Park Project Background

## Project Highlights

- Brownie Neighborhood Park is an approximately 7.8-acre park in the North Lamar Neighborhood.
- Improvements will include a picnic pavilion, a loop walking trail, a new playground, and more.
- One strong hope is for the art to embody community and inclusion and to contribute to the park as a calm and peaceful oasis.

## Potential Art Locations

- Adjacent to the pavilion
- Area facing the playground
- Next to entrance near Brownie Drive



# RECOMMENDED ARTIST

## Brownie Neighborhood Park

*Previous TEMPO Artist & In AIPP Collection*

### Yareth Fernandez

#### *Jury & Advisor Comments:*

*Hernandez bridges their approaches to whimsical but pragmatic materiality with careful considerations for human interactions, wildlife, plant, and tree life...Their goal is to highlight the park's natural environment, which perfectly aligns with what Brownie community members have expressed a desire for. Furthermore, Hernandez shared that they live and work in the Brownie Neighborhood as a high school educator, thus making them a community-community member for our Brownie Park Project.*

*The multi-dimensional aspects of her past works, as well as her personal connection to the Brownie Park neighborhood, were also a positive element. Her work as a teacher also helped in my decision regarding the possibilities of her knowledgeable use of color, texture and educational aspects in an experience for children and play.*



Selection Process Recommendations

Budget: \$48,000



# RECOMMENDED ALTERNATE

## Brownie Neighborhood Park

*Previous TEMPO Artist*

### Suzanne Wyss

#### *Jury & Advisor Comments:*

*Suzanne Wyss has demonstrated a commanding sense of scale: her application features entire interactive environments which are site specific in nature and therefore, her work has the potential to be a defining characteristic of Brownie Park, rather than a mere feature. Her textures and forms are complex, and she shows a mastery of color, which Brownie park is presently devoid of. These formal elements would be as transformative as they are playful and escapist, appealing to both children and adults, as well as neighbors and visitors. As a woman artist, she satisfies our pursuit of equity.*

*The artist's interest and emotional ties to the Highland Park project [piqued] my interest with her personal connection but I have faith that her diverse work shown in her application as well as her application note of "views of life, death and energy" being changed in a park environment... [They] will be a strong foundation into the Brownie Park project goal of imagination and play.*



## Selection Process Recommendations



# Emma Long Metropolitan Park Project Background

## Project Highlights

- In the early 1970s, a portion of the park was dedicated to motorcycle trails. The trails are actively used by three different riding clubs today.
- The community's hope is for an artwork that serves as a welcoming entry point of Emma Long Metro Park that showcases the park's natural surroundings.
- The majority of the park is located within the Balcones Canyonlands Preserve (BCP) and has eight endangered species within the preserve.

## Potential Art Locations

- Near or integrated into pay booth
- In open field approaching the pay booth
- On median of the park's entrance road



# RECOMMENDED ARTIST

## Emma Long Metropolitan Park

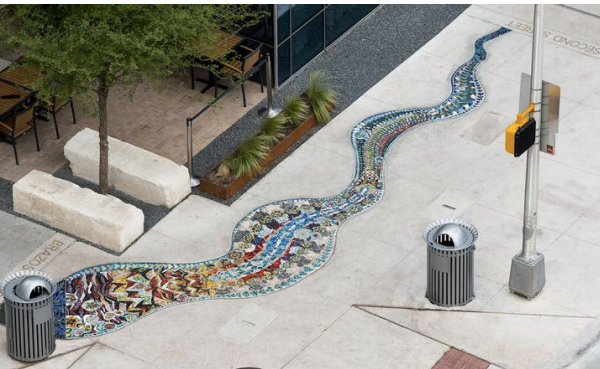
*In AIPP Collection*

### Ryah Christensen

#### *Jury & Advisor Comments:*

*The artist's proven and success work in MOSAIC was a strong element in my decision. Not only the history of mosaic work itself historically, but the possibilities in the use of texture and color with regard to historical, educational and cultural integration of Austin's diverse communities at the entrance of this "day use" park for locals and tourists.*

*Children especially can be very attuned to the alternative stories of real and imagined creatures that inhabit the natural world. I love [Ryah's] themes of rocks inhabited with spirit lichen...and the chance to get that sensibility in a grand entrance archway or similar exciting entrance piece to greet visitors to the pristine nature available at Emma Long would be wonderful.*



Selection Process Recommendations

Budget: \$48,000



# RECOMMENDED ALTERNATE

Emma Long Metropolitan Park

*In AIPP Collection*

## Dale Whistler

### *Jury & Advisor Comments:*

*The artist's proven track record of landmark artworks and iconic Austin was a contributing factor in my recommendation as well as his diverse "pallet" of artistic possibilities.*

*Dale Whistler is a proven, prolific artist: his art is all over Austin. His material is whimsical and iconic.*

*To me, Dale's work is bright and happy. What a fun way to be welcomed to Emma Long!*

Selection Process Recommendations

# Highland Neighborhood Park and Reznicek Fields Project Background

## Project Highlights

- Park activities started with the University Hills Optimist Club (UHO) in the 1970s.
- Several park improvements to come, including two ball fields, a loop walking trail, and additional trees
- Stakeholder desire artwork that engages with the natural beauty of the park and connections to Waller Creek, while reflecting the community's history and celebrating its future

## Potential Art Locations

- Near the vehicular drop off
- At the proposed raingarden
- Between the ball fields
- Near St. Johns and the pedestrian trail





# RECOMMENDED ARTIST

## Highland Neighborhood Park

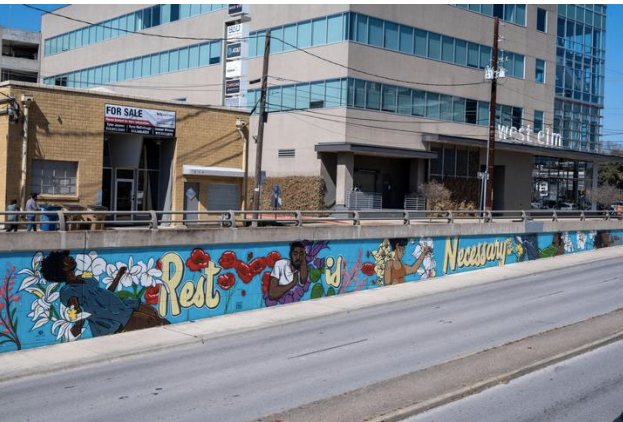
*Previous TEMPO Artist*

### Samara Barks

#### *Jury & Advisor Comments:*

*They are a very good fit for Highland Park Project as their work evokes a sense of unity, centers BIPOC narratives, ancestral attunement, care and respect. Barks' engagement with our Highland community will uplift many and serve as a beacon now and beyond...*

*Samara highlighted a lot of fun images of kids playing on bicycles and jump roping - getting exercise in a fun way - in her mutual work. The fact that Samara lives near Highland Park and says she frequently uses it makes me hopeful she will connect her artwork with the many children who depend on this park for recreation and access to nature.*



Selection Process Recommendations

Budget: \$48,000

# RECOMMENDED ALTERNATE

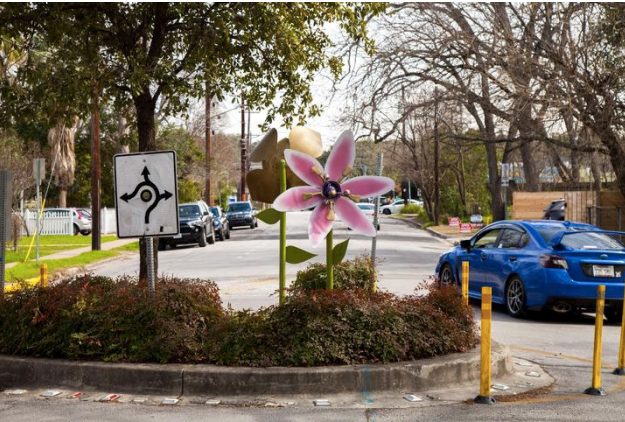
## Highland Neighborhood Park

### Abraham Van Vleck

#### *Jury & Advisor Comments:*

*I love interactive art for kids to really get up close to and have fun with. Many of the kids who play at Highland Park are not able to have much access to art in their lives...I love the idea of giving them art they can play on and imagine with.*

*... the artist's extensive experience and level of expertise in engineering and environmental projects involving play and nature shows great possibilities.*





# Oertli Neighborhood Park Project Background

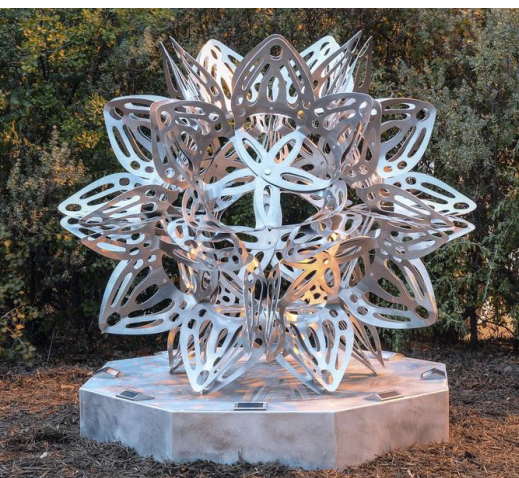
## Project Highlights

- The property was previously a pasture, owned by the Oertli Family, who operated local dairy farms in Austin and Travis County from 1923-2001.
- The community is seeking an artwork that celebrates the local plants and animals of the park and surrounding area; and
- Engages with the area's history of farming while looking toward its future in tech.

## Potential Art Locations

- At the north park entrance
- Near the large pavilion
- Adjacent to the off-leash dog area
- At the south park entrance





# RECOMMENDED ARTIST

## Oertli Neighborhood Park

*Previous TEMPO Artist*

### Jamie Spinello

#### *Jury & Advisor Comments:*

*Jamie Spinello's work is monumental in scale and organic in form. Her chosen materials are durable and particularly suited to the immensity and emptiness of Oertli Park.*

*Ranking within the initial jury pool review was the anchor of my decision with regard to the artist's inclusion in this artistic project as well as her proven track record of successful Austin library exhibitions as well as national experience. I look forward to seeing how her artistry can bring a reflection of the history of farming at this location tied to the future of technology in this... park environment.*

Selection Process Recommendations

Budget: \$48,000

# RECOMMENDED ALTERNATE

## Oertli Neighborhood Park

*In AIPP Collection*

### Judd Graham

#### *Jury & Advisor Comments:*

*The multi-dimensional and diverse material elements of past work and the artistic possibilities of showing the history of farming and the future of technology in this park environment was a major contributing factor. The artist's work "Ants" introduced in my mind many possibilities in showing the history of the area as a dairy farm and its cows.*

*Judd Graham's sculptures are playful and accessible: not every new sculpture in Austin needs to be minimalist or non-representational. His forms are particularly suited to younger park goers.*

*Colorful artworks*

