

An aerial photograph of a wastewater treatment plant. In the foreground, there are several large, rectangular concrete basins with metal walkways and railings. Beyond the basins is a large green field. In the background, a dense line of trees separates the plant from a city skyline under a cloudy sky.

# Water Forward 2024 project status update



# Water Forward 2024 (WF24)

## Project Tasks

### Task 1 - Project Management

### Task 2 - Community Engagement

**Task 3.** Refine planning methodology

**Task 4.** Forecast baseline water demands

**Task 5.** Update climate and hydrology analysis

**Task 6.** Identify water resource needs

**Task 7.** Identify, screen, and characterize strategies

**Task 8.** Develop and evaluate 50-yr water resource portfolios

**Task 9.** Develop plan recommendations and 100-yr adaptive management plan



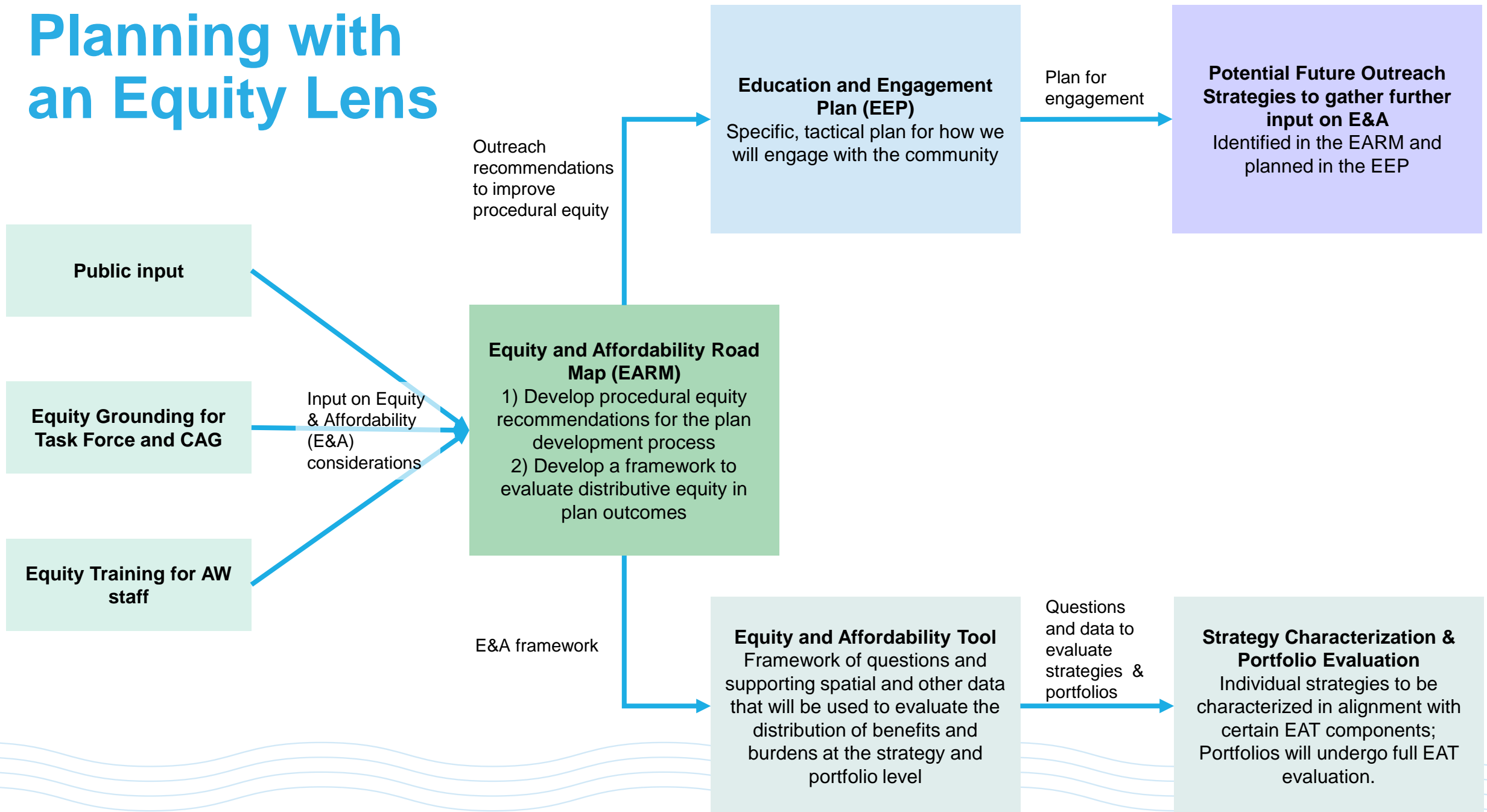


# WF24 Task Progress to Date & Next Steps

	Task Name	Progress to Date	Next Steps
2	Community Engagement	<ul style="list-style-type: none"><li>• Launched SpeakUp Austin page</li><li>• Completed first two community workshops</li><li>• Completed staff Equity Training and Community Ambassadors Group / Water Forward Task Force Equity Grounding Sessions</li><li>• Began initial research into Austin Water history</li></ul>	<ul style="list-style-type: none"><li>• Improve SpeakUp Austin Page</li><li>• Incorporate history findings into Austin Water timeline</li><li>• Draft Equity and Affordability Roadmap</li><li>• Revise draft Education and Engagement Plan</li><li>• Finalize plans for Fall/Winter outreach</li></ul>
3	Planning Methodology	<ul style="list-style-type: none"><li>• Substantial completion of WF24 modeling scenarios definition (hydrology, demands, supply)</li></ul>	<ul style="list-style-type: none"><li>• Further refine methodology through Fall/Winter</li></ul>
4	Demand Forecast	<ul style="list-style-type: none"><li>• Substantial completion of disaggregated demand model structural improvements</li></ul>	<ul style="list-style-type: none"><li>• Develop small polygon-level population, unit, and employee projections</li></ul>
5	Climate and Hydrology Analysis	<ul style="list-style-type: none"><li>• Developed hydrologic models and completed associated technical memo</li></ul>	<ul style="list-style-type: none"><li>• Presentation to the Water Forward Task Force 9/20</li><li>• Develop streamflow series for incorporation into the WAM</li></ul>



# Planning with an Equity Lens



# Equity Grounding Series

## 8/16 Session # 1

- City of Austin Equity 101 Training
- Austin's history
- Definition of equity

## 8/23 Session #2

- How COA departments are addressing equity and affordability in plans and policies

## 8/25 Session #3

- Debrief with Task Force and CAG members to gather feedback to incorporate into the WF24 Equity and Affordability Roadmap



# Session #3: Discussion Questions

- What is the vision that we want to see for the WF24 EARM?
- In looking at who bears the burdens and who gets the benefits, which communities are we most concerned about?
- What questions should we be asking about WF24 strategies to understand how they are impacting/benefitting vulnerable communities?
- Beyond the scope of Water Forward, what collaborations between AW workgroups or City departments can help us to reach more equitable outcomes for our community?
- What strategies can we use to reach people? What voices are missing?



# EARM Next Steps

- Incorporate research findings into previously compiled Austin water/wastewater history
- Compile feedback from staff, Task Force, and CAG from equity trainings/grounding
  - Categorize, formulate draft questions, and identify possible best practices/goals
- Target drafting EARM outline/framework by end of September



# Future Task Force Meeting Items

- ♦ September 20<sup>th</sup> - Overview of Climate and Hydrology Analysis, presented by Austin Water staff and UT
- ♦ November – Present 100-year population and employment projections
- ♦ January – Present draft Equity and Affordability Roadmap





An aerial photograph of a wastewater treatment plant. In the foreground, there are several large, rectangular concrete basins with metal walkways and railings. Beyond the basins is a large green field. In the far background, a dense urban skyline is visible under a cloudy sky. A semi-transparent blue banner is overlaid across the middle of the image.

# Questions

