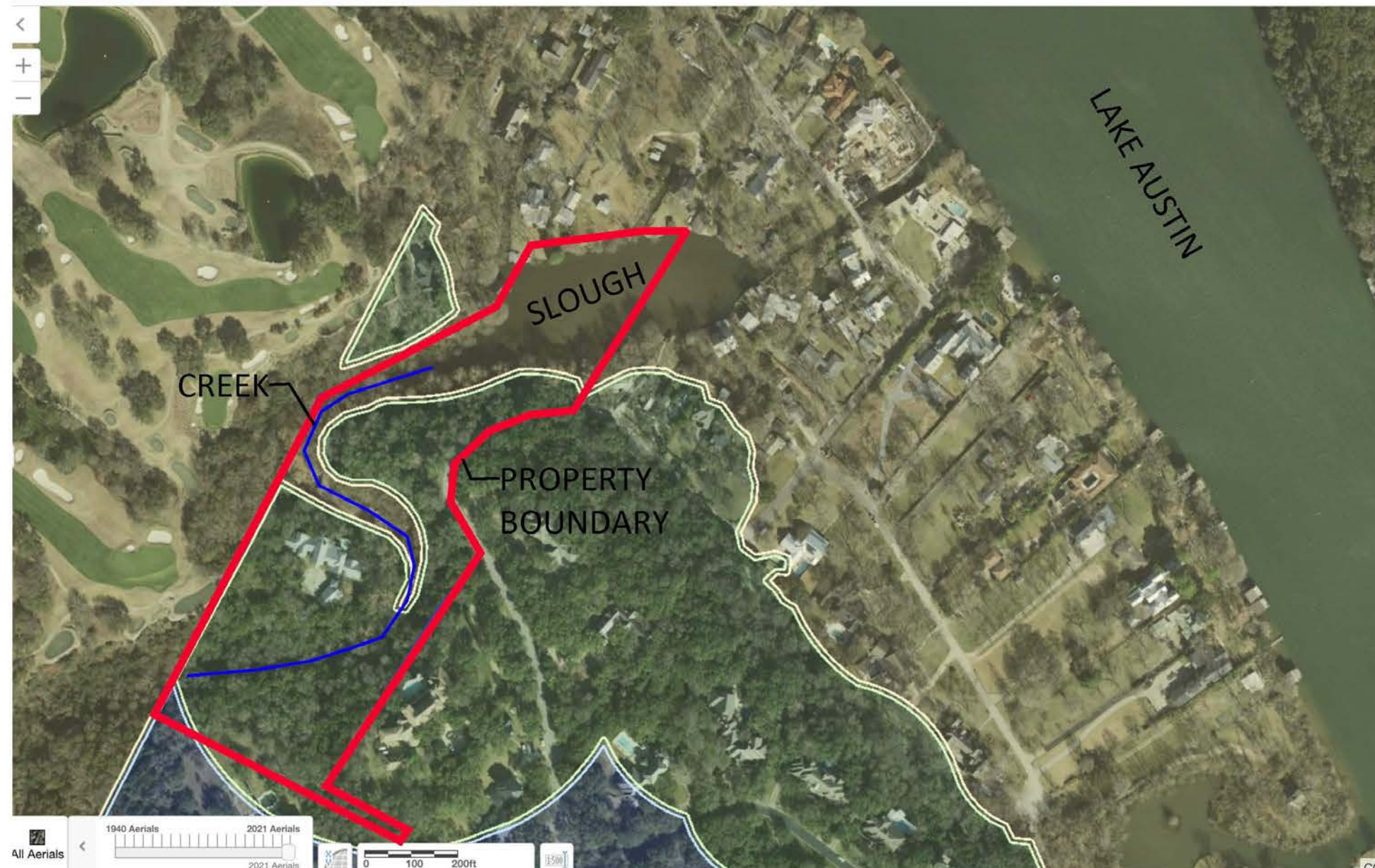


# 4625 Rockcliff Road

Application for a Variance to LDC-25-2-1176(A)(2)

Dock extension greater than 20% of the channel width  
from the Lake Austin shoreline

Case no. C15-2022-0070





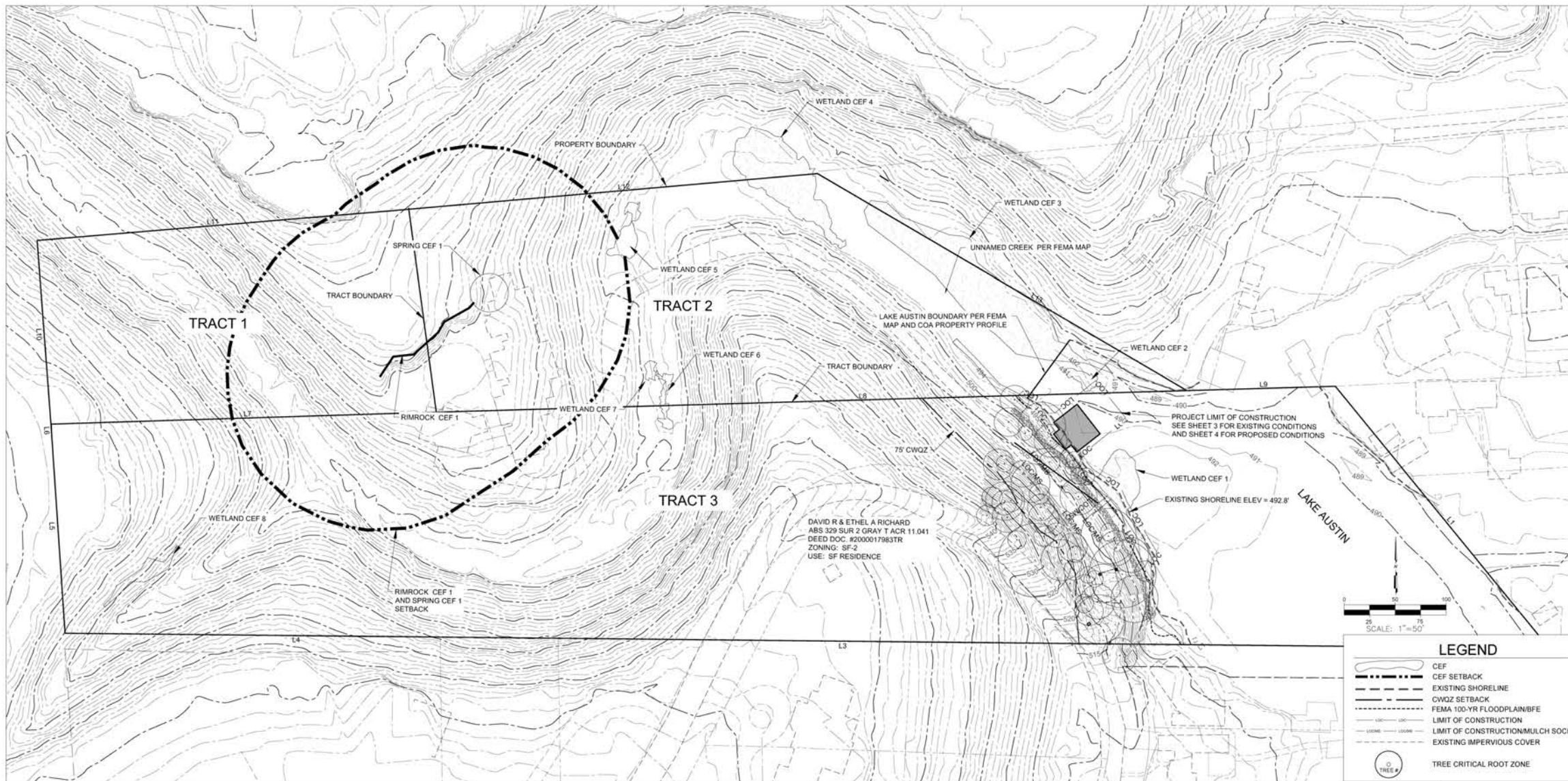
# 4625 ROCKCLIFF ROAD

TREE LIST			
TREE #	CALIPER SIZE (IN)	TREE TYPE	PROPOSED
1	22.5	CEDAR ELM	REMAINING
2	13	CEDAR ELM	REMAINING
3	10	CEDAR	REMAINING
4	14	CEDAR ELM	REMAINING
5	17	CEDAR ELM	REMAINING
6	11	LIVE OAK	REMAINING
7	12.5	CEDAR ELM	REMAINING
8	10.5	CEDAR ELM	REMAINING
9	11	CEDAR	REMAINING
10	16	CEDAR ELM	REMAINING
11	11	CEDAR ELM	REMAINING
12	11	LIVE OAK	REMAINING
13	8	CEDAR ELM	REMAINING
14	31	CEDAR ELM	REMAINING
15	21	CEDAR	REMAINING
16	12	CEDAR ELM	REMAINING
17	16	CEDAR ELM	REMAINING
18	9	LIVE OAK	REMAINING

TREE LIST			
TREE #	CALIPER SIZE (IN)	TREE TYPE	PROPOSED
19	26	CEDAR ELM	REMAINING
20	17	CEDAR ELM	REMAINING
21	13.5	CEDAR	REMAINING
22	9	CEDAR ELM	REMAINING
23	10.5	CEDAR ELM	REMAINING
24	8	LIVE OAK	REMAINING
25	11.5	CEDAR ELM	REMAINING
26	25	CEDAR ELM	REMAINING
27	6.5	CEDAR	REMAINING
28	6.5	CEDAR ELM	REMAINING
29	13.25	CEDAR ELM	REMAINING
30	10	LIVE OAK	REMAINING
31	11	CEDAR ELM	REMAINING
33	19	CEDAR	REMAINING
34	14	CEDAR ELM	REMAINING
35	8	CEDAR ELM	REMAINING
36	11	LIVE OAK	REMAINING
37	10.5	CEDAR ELM	REMAINING

TREE LIST			
TREE #	CALIPER SIZE (IN)	TREE TYPE	PROPOSED
38	18.5	CEDAR ELM	REMAINING
39	11.5	CEDAR	REMAINING
40	9	CEDAR ELM	REMAINING
41	21	CEDAR ELM	REMAINING
42	34	LIVE OAK	REMAINING
43	8	CEDAR ELM	REMAINING
44	8.5	CEDAR ELM	REMAINING
45	12	CEDAR	REMAINING
46	17	CEDAR ELM	REMAINING
47	14	CEDAR ELM	REMAINING
48	18.5	LIVE OAK	REMAINING
49	9	CEDAR ELM	REMAINING
50	15	CEDAR ELM	REMAINING
51	14	CEDAR	REMAINING
52	9.5	CEDAR ELM	REMAINING
53	10.5	CEDAR ELM	REMAINING
54	12	LIVE OAK	REMAINING
55	10.75	CEDAR ELM	REMAINING

LINE TABLE		
LINE	BEARING	LENGTH
L1	N 84°39'10" E	331.36'
L2	S 34°50'06" W	454.72'
L3	S 34°30'08" W	367.22'
L4	S 34°29'20" W	632.94'
L5	N 60°11'00" W	199.07'
L6	N 60°24'26" W	4.75'
L7	N 32°06'01" E	358.47'
L8	S 32°14'11" W	763.18'
L9	N 32°14'11" E	123.83'
L10	N 59°43'10" W	195.90'
L11	N 29°43'59" E	356.39'
L12	N 29°31'59" E	412.06'
L13	N 64°51'58" E	426.56'



LOCATION OF CRITICAL ENVIRONMENTAL FEATURES ON ALL TRACTS OF THE PROPERTY

Janis Smith



Janis Smith Consulting, LLC  
 1905 Westover Road • Austin, Texas 78703 • 512-914-3729  
 Texas Board of Professional Engineers Registration Number F-06978

4625 ROCKCLIFF ROAD  
 CEF LOCATIONS AND  
 OVERALL SITE PLAN

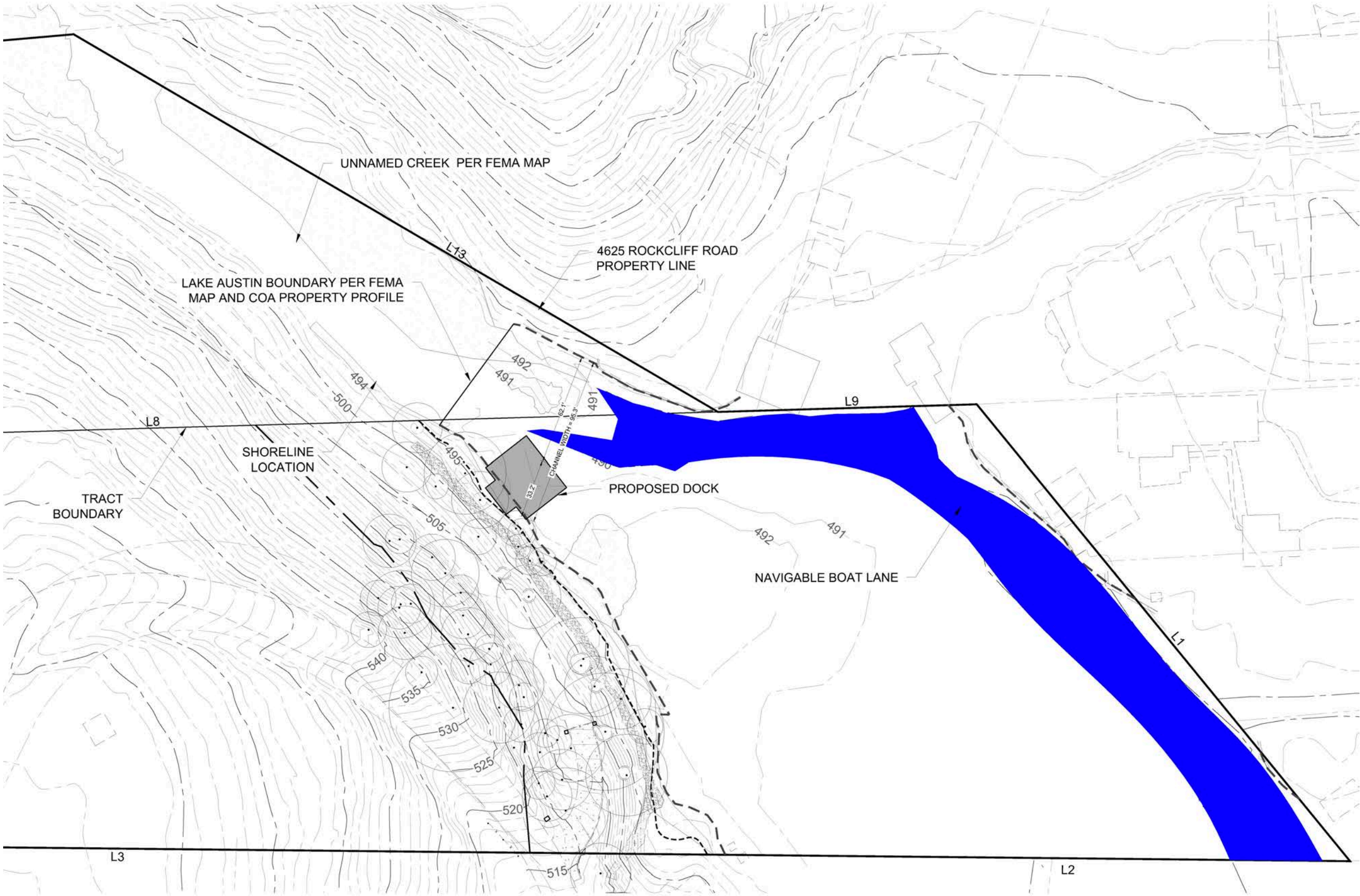
DESIGNED: JJS  
 APPROVED: [Signature]  
 SCALE: AS SHOWN  
 4625 ROCKCLIFF ROAD  
 DATE: MARCH 29, 2022  
 SHEET: 2 of 7  
 2  
 SP-2022-02460

4625 ROCKCLIFF - SP-2022-02460

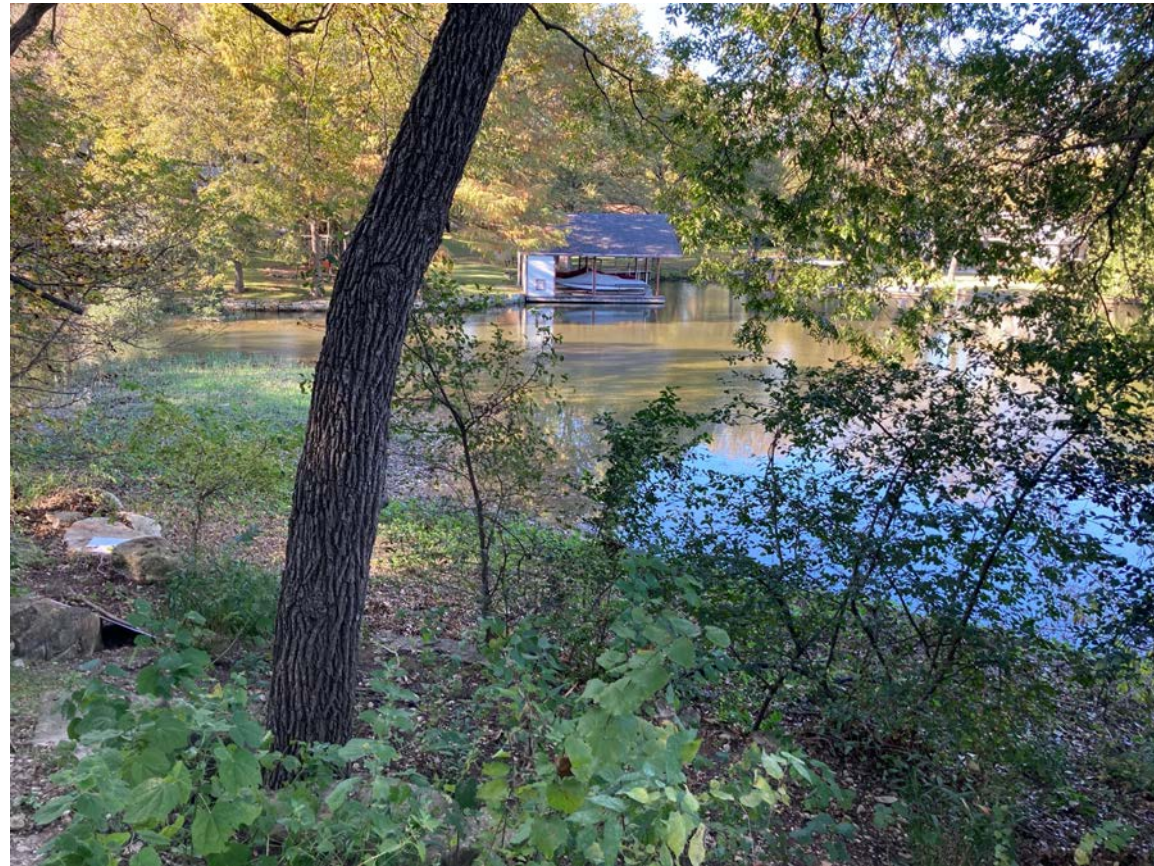












LAKE AUSTIN SLOUGH



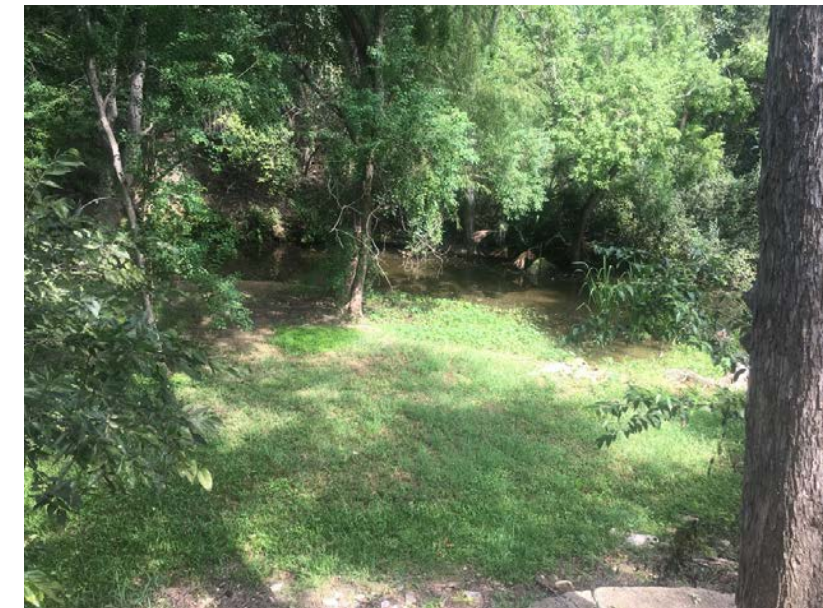
LOOKING UPSTREAM FROM SLOUGH  
TO THE CREEK. DOCK LOCATION CIRCLED



APPROXIMATE DOCK LOCATION.  
SLOUGH ENDS AT ABOUT THE  
UPSTREAM CORNER OF THE  
HOUSE ACROSS THE LAKE

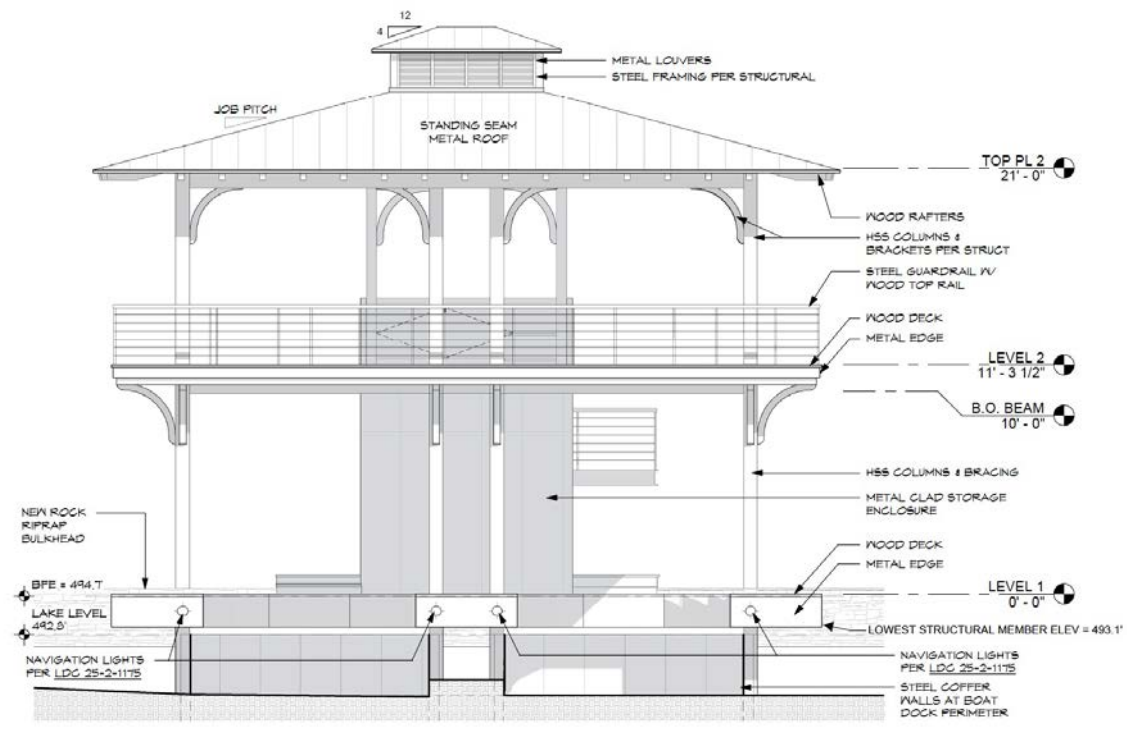


CREEKBED

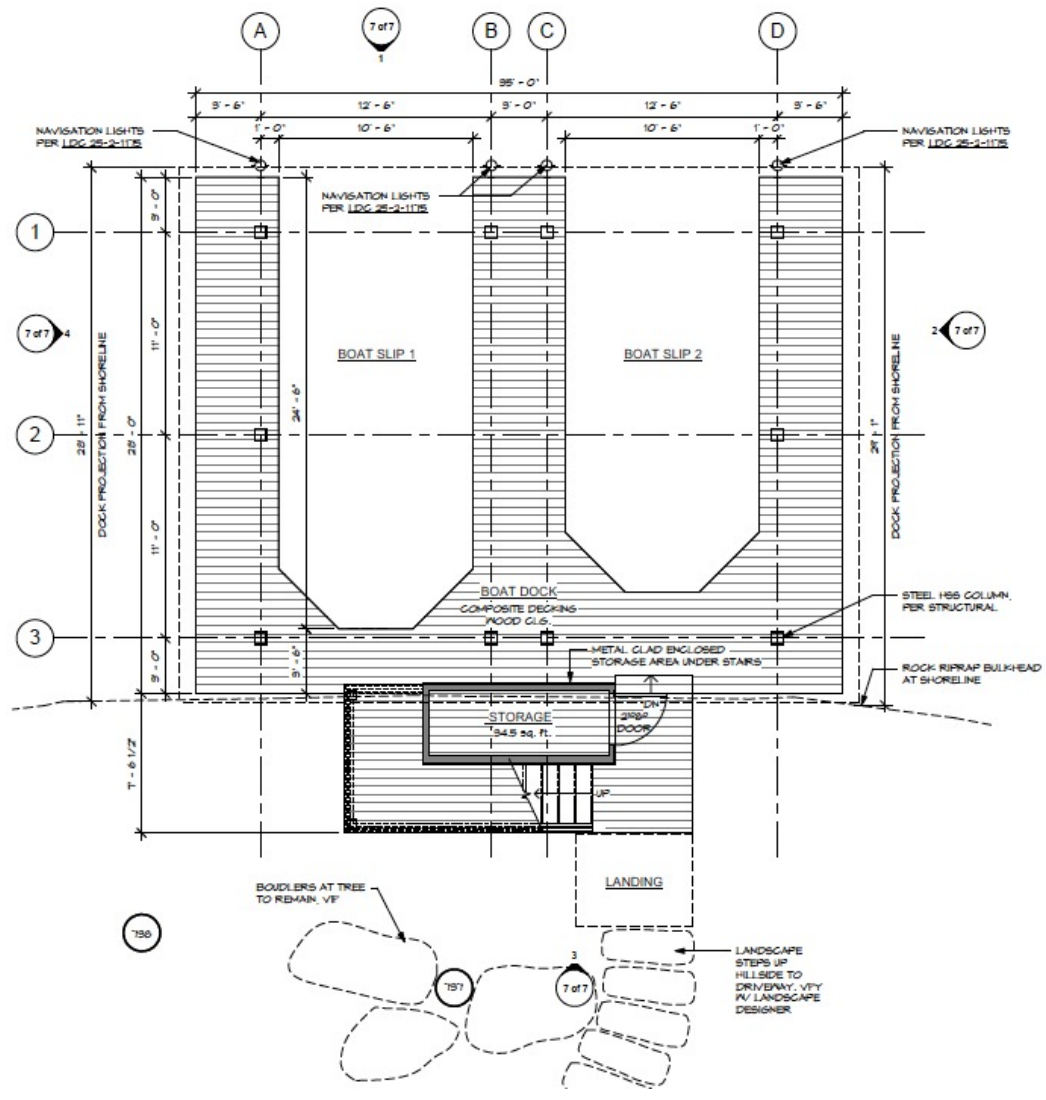


CREEKBED





1 NORTH ELEVATION  
1/4" = 1'-0"



780

757

7 of 7