

**LEGEND**

—	PROPERTY LINE
- - -	LOT LINE
- - -	EASEMENT LINE
— RW —	PROPOSES RECLAIMED WATER LINE
⊙	PROPOSED WASTEWATER MANHOLE
→	WASTEWATER FLOW DIRECTION
⊙	PROPOSED FIRE HYDRANT
⊙	PROPOSED TAPPING SLEEVE & VALVE
—	PROPOSED STORM DRAIN LINE
□	PROPOSED STORM DRAIN INLET
— OHP —	EXISTING OVERHEAD POWER LINE
— W —	EXISTING WATER LINE
- - -	EXISTING WASTEWATER LINE
- - -	EXISTING STORM SEWER LINE
⊙	EXISTING POWER POLE
⊙	EXISTING FIRE HYDRANT
⊙	EXISTING WATER METER
⊙	EXISTING WASTEWATER MANHOLE
— CWQZ —	CRITICAL WATER QUALITY ZONE
- - -	CREEK CENTERLINE
—	FEMA 500-YR FLOODPLAIN

**NOTES**

REFER TO APPROVED WATER SER #3618 AND WASTEWATER SER #3619.

**BENCHMARKS**

**BENCHMARKS:**

TBM #1

SET ON HEADWALL LOCATED 107.93' FROM THE NORTHERLY CORNER OF LOT 3, BLOCK "A", ELEVATION =462.68 FEET (AS SHOWN)

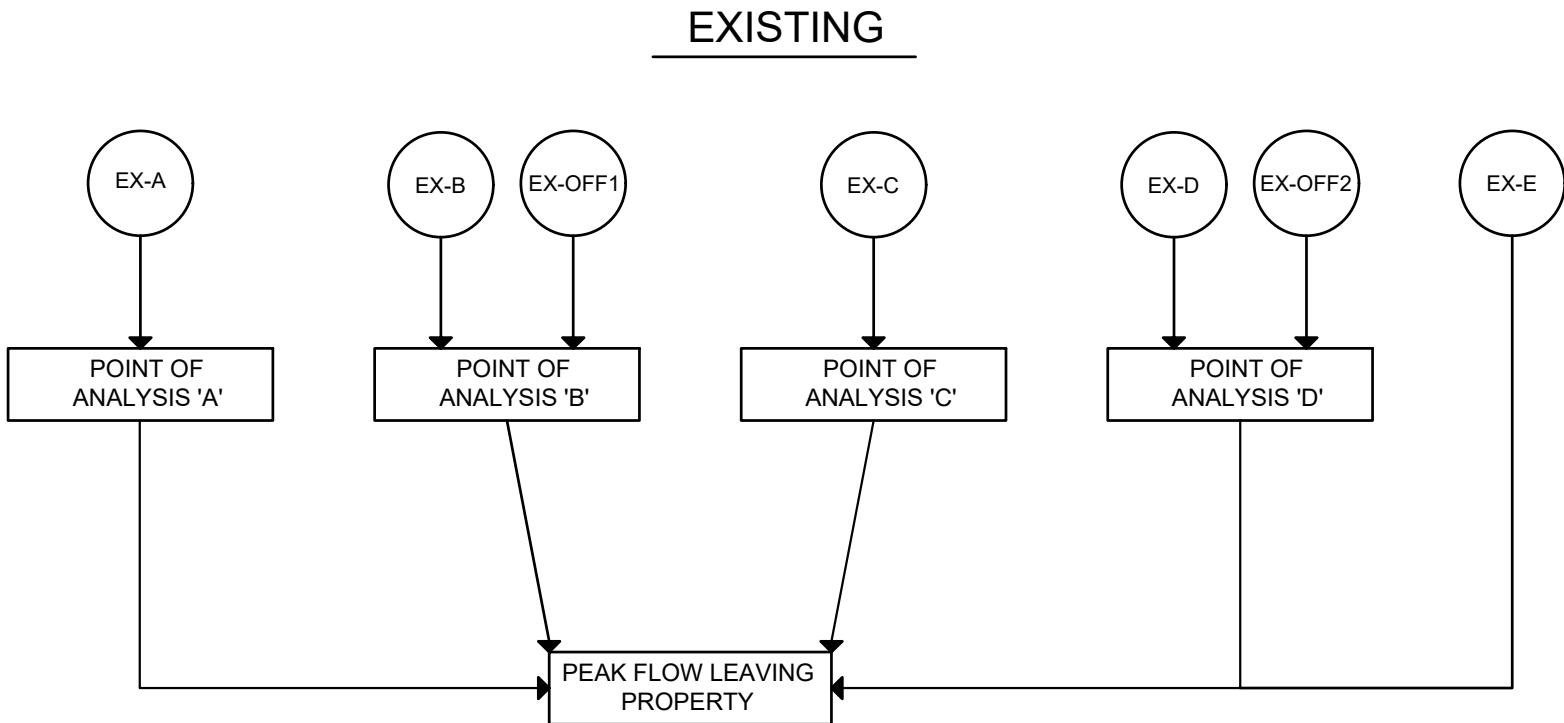
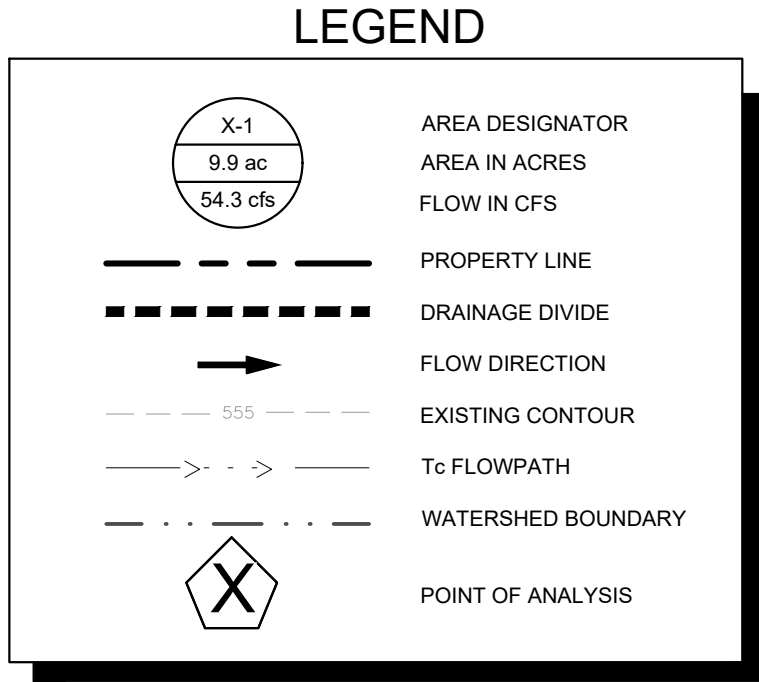
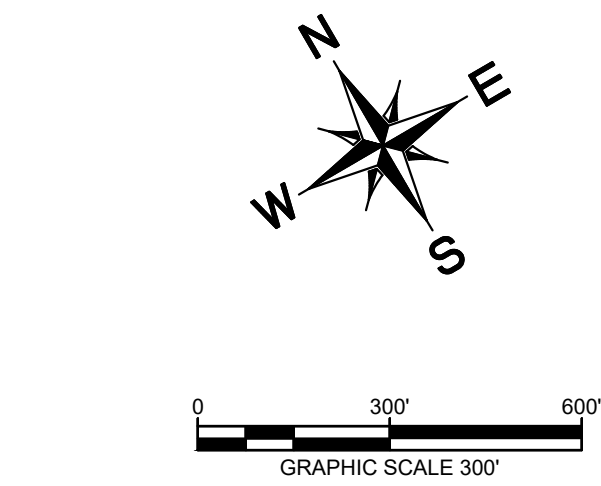
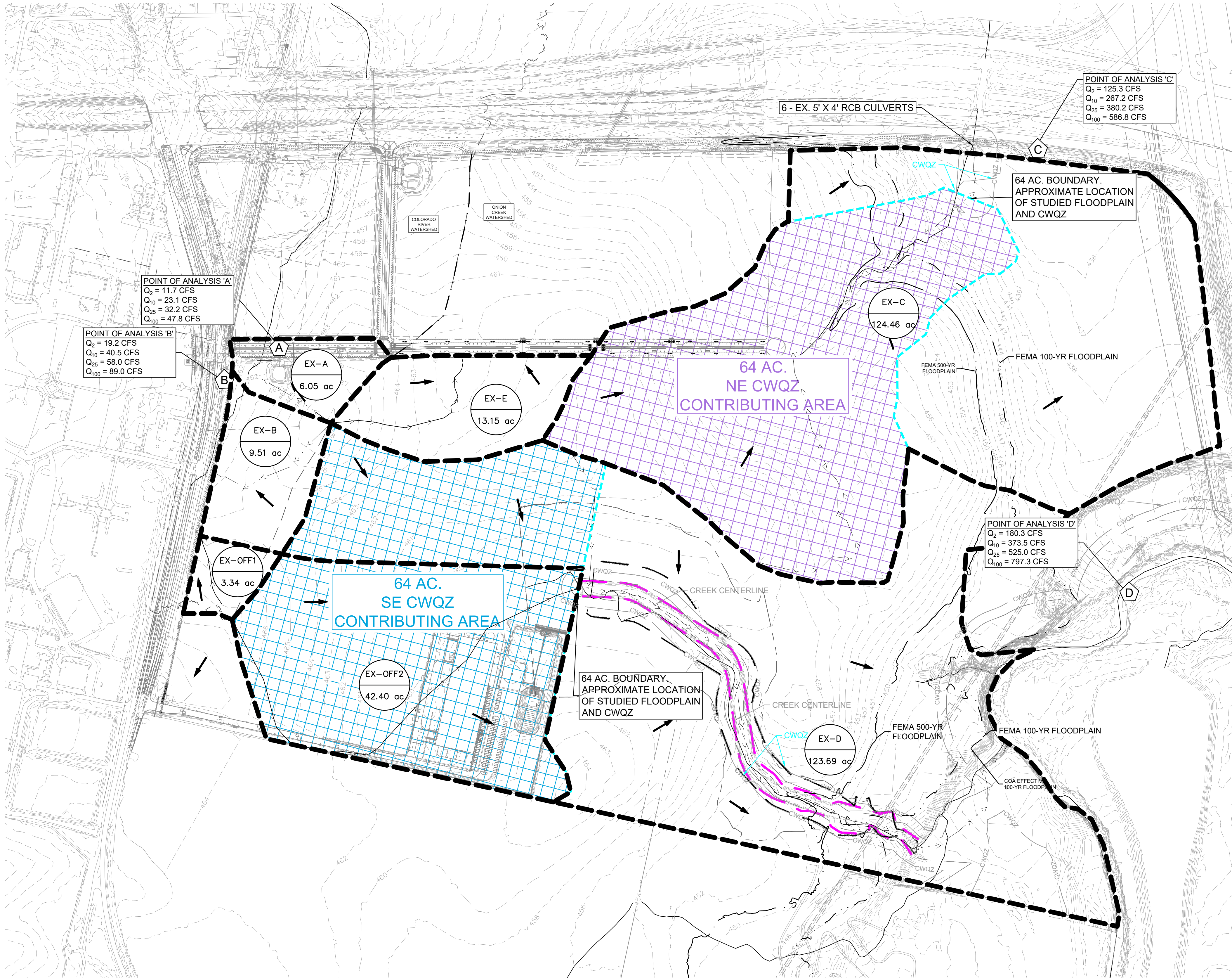
TBM #3

SET ON HEADWALL LOCATED 1,107.52' FROM THE NORTHEASTERLY CORNER OF LOT 3, BLOCK "A", ELEVATION =439.44 FEET (AS SHOWN)

KHA PROJECT 069243907		DATE JUNE 2022	SCALE: AS SHOWN	DESIGNED BY: NZL	DRAWN BY: GKM	CHECKED BY: JUK
<b>VELOCITY PRELIMINARY PLAN</b> CITY OF AUSTIN TRAVIS COUNTY, TEXAS						
<b>WASTEWATER PLAN</b>						
SHEET NUMBER <b>EX-F</b>						
Kimley»Horn		© 2022 KIMLEY-HORN AND ASSOCIATES, INC. 10814 JOLLYVILLE ROAD, AVALON IV, SUITE 200, AUSTIN, TX 78759 PHONE: 512-418-1771 FAX: 512-418-791 WWW.KIMLEY-HORN.COM		TEXAS REGISTERED ENGINEERING FIRM F-928		REVISIONS
BY		DATE		No.		

Plotted By: Lutz, Nick Date: September 26, 2022 01:54:47pm File Path: K:\AUS\_Civil\069243907 - Velocity Crossing Preliminary Plan\Coa Plan Sheets\C-Water and Wastewater Plan.dwg  
This document, together with the concepts and designs presented herein, as an instrument of service, is intended only for the specific purpose and client for which it was prepared. Reuse of and improper reliance on this document without written authorization and adaptation by Kimley-Horn and Associates, Inc. shall be without liability to Kimley-Horn and Associates, Inc.





**Velocity - Preliminary Plan**  
**Drainage Calculations - SCS Method**

DRAINAGE AREA	AREA	AREA	IMPERVIOUS	IMPERVIOUS	PERVIOUS	WEIGHTED	SHEET FLOW				SHALLOW CONCENTRATED FLOW								CHANNEL FLOW								TOTAL Tc** (min)	Q <sub>2</sub> (cfs)	Q <sub>10</sub> (cfs)	Q <sub>25</sub> (cfs)	Q <sub>100</sub> (cfs)
	(sf)	(Ac.)	COVER (sf)	COVER %	CURVE NO. Cn*	CURVE NO. Cn*	P-2yr24hr 4.2 IN				Grass Surface				Paved Surface				Channel Flow												
							N	L (ft)	S (ft/ft)	Tt(min)	L (ft)	V (fps)	S (ft/ft)	Tt(min)	L	V (fps)	S	Tt(min)	L (ft)	V (fps)	a (ft <sup>4</sup> )	Pw (ft)	r	n	S (ft/ft)	Tt(min)					
EX-A	263,538	6.05	59626	22.63%	78.00	82.53	0.15	100	0.006	13.576	455	1.6	0.010	4.700	0	0.00	0.000	0.000	100	8.1	3.7	7.5	0.49	0.013	0.01	0.20	18.48	11.74	23.05	32.16	47.83
EX-B	414,256	9.51	0	0.00%	78.00	78.00	0.15	100	0.004	16.281	675	1.3	0.007	8.334	0	0.00	0.000	0.000	-	-	-	-	-	-	-	0.00	24.61	13.86	29.36	42.08	64.68
EX-C	5,421,478	124.46	0	0.00%	78.00	78.00	0.15	100	0.006	13.843	3312	1.4	0.008	38.251	0	0.00	0.000	0.000	0	8.9	27.0	19.0	1.42	0.03	0.02	0.00	52.09	125.26	267.17	380.15	586.76
EX-D	5,387,936	123.69	0	0.00%	78.00	78.00	0.15	100	0.007	13.015	4020	1.8	0.013	36.421	0	0.00	0.000	0.000	0	9.7	30.0	20.0	1.50	0.03	0.02	0.00	49.44	128.09	275.20	391.10	599.12
EX-E	572,814	13.15	0	0.00%	78.00	78.00	0.15	100	0.006	13.843	895	1.2	0.006	11.936	0	0.00	0.000	0.000	0	9.7	30.0	20.0	1.50	0.03	0.02	0.00	25.78	18.81	39.84	56.77	86.95
EX-OFF1	145,490	3.34	0	0.00%	78.00	78.00	0.15	100	0.004	16.281	284	1.3	0.007	3.506	0	0.00	0.000	0.000	0	8.3	25.0	19.6	1.28	0.03	0.02	0.00	19.78	5.32	11.26	16.16	24.75
EX-OFF2	1,846,944	42.40	738778	40.00%	78.00	86.00	0.15	100	0.005	14.891	2530	1.0	0.003	44.313	0	0.00	0.000	0.000	0	8.3	25.0	19.6	1.28	0.03	0.02	0.00	59.20	53.31	100.34	135.58	200.81

**Kimley»Horn**

© 2022 KIMLEY-HORN AND ASSOCIATES, INC.  
10814 JOLLYVILLE ROAD, AVALON IV, SUITE 200, AUSTIN, TX 78759  
PHONE: 512-418-1771 FAX: 512-418-791  
WWW.KIMLEY-HORN.COM  
TEXAS REGISTERED ENGINEERING FIRM F-928

9/26/2022

KHA PROJECT 069243907  
DATE JUNE 2022  
SCALE AS SHOWN  
DESIGNED BY: NZL  
DRAWN BY: GKM  
CHECKED BY: JJK

EXISTING DRAINAGE  
AREA MAP

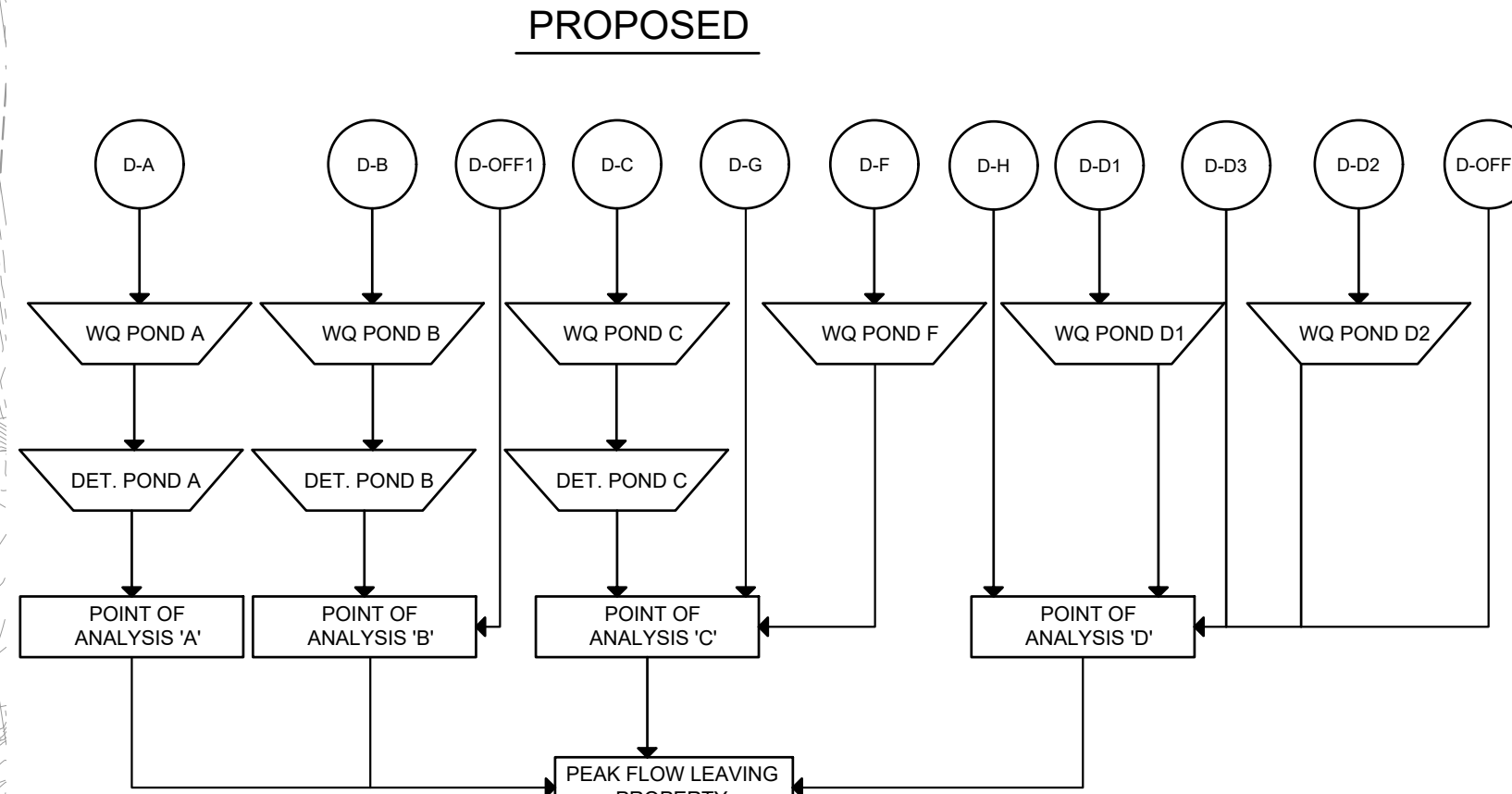
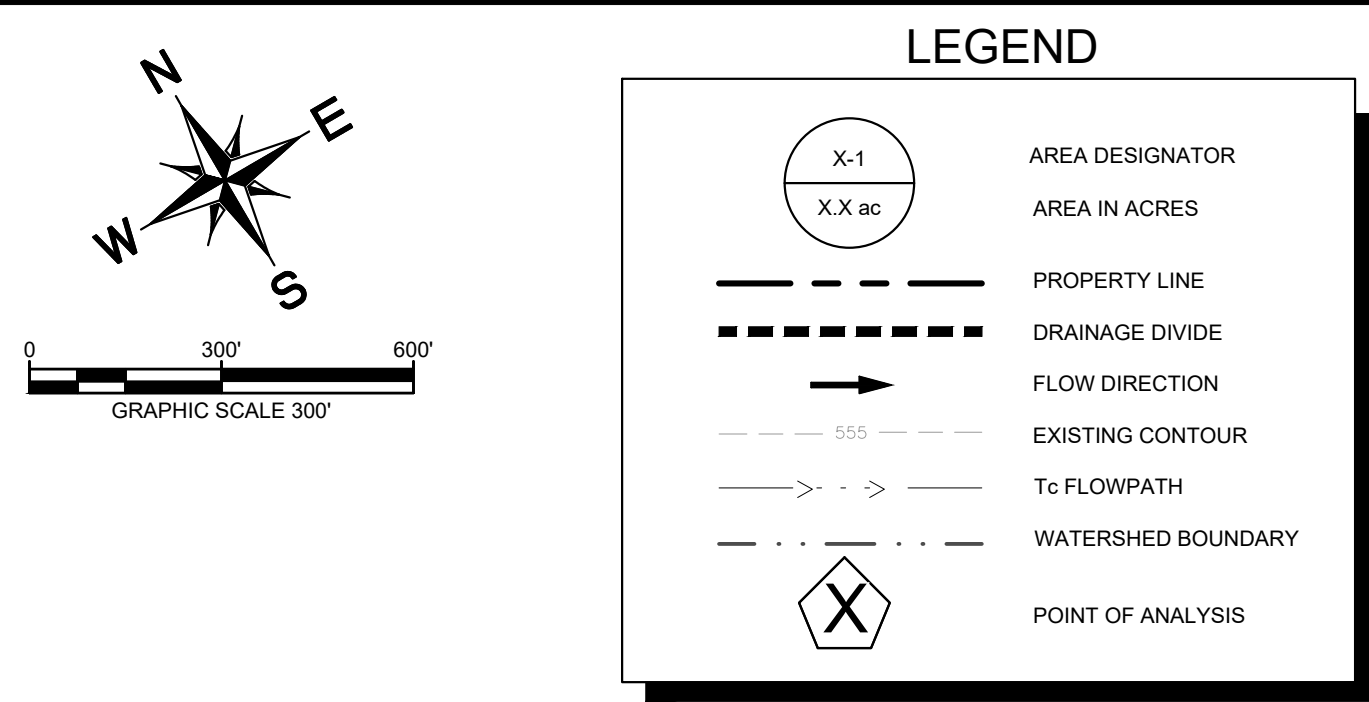
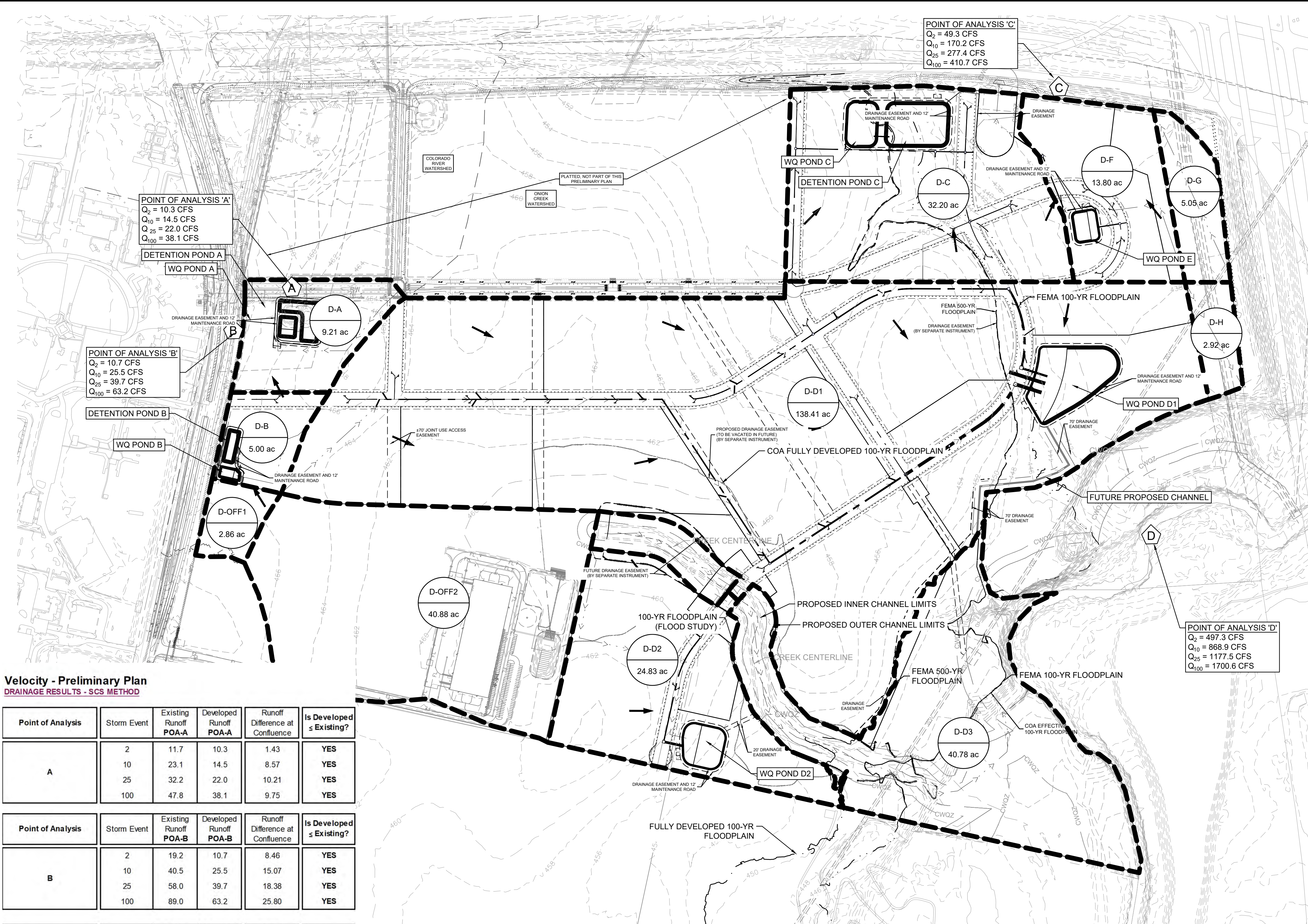
VELOCITY  
PRELIMINARY PLAN  
CITY OF AUSTIN  
TRAVIS COUNTY, TEXAS

SHEET NUMBER  
**EX-G**

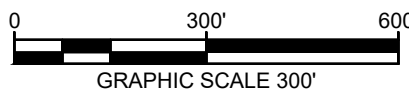


Plotted By: Lutz, Nick Date: September 26, 2022 01:56:45pm File Path: K:\AUS-Civil\069243907 - Velocity Crossing Preliminary Plan\Coa-PlanSheets\C-Proposed Drainage Area Map.dwg

This document, together with the concepts and designs presented herein, is an instrument of service, intended only for the specific purpose and client for which it was prepared. Reuse of and improper reliance on this document without written authorization and adaptation by Kimley-Horn and Associates, Inc. shall be without liability to Kimley-Horn and Associates, Inc.



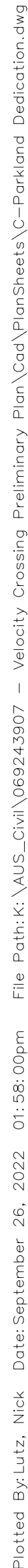




Appendix R-1		
Partial Biofiltration Pond Calculations for Development Permits		
<b>Drainage Area Data:</b>		
<b>WATER QUALITY POND C</b>		
Drainage Area to Control (DA)	32.20 AC.	
Drainage Area Percent Impervious Cover	85 %	27.37 AC.
Capture Depth (CD)	1.15 IN.	
<b>Water Quality Control Calculations:</b>	<b>Required</b>	<b>Provided</b>
The Water Quality Control is to be Partial Biofiltration		
25 Year Peak Flow Rate to Control (Q25)	216.22 CFS	
100 Year Peak Flow Rate to Control (Q100)	302.18 CFS	
Water Quality Volume (WQV=CD*DA*3630)	134419 CF	169780 CF
Maximum Ponded Depth Above Sand Bed (H)		5 FT
Sedimentation Pond Area		11,365 SF
Sedimentation Pond Volume (Min. 20% of WQV)	33956 CF	52965 CF
Filtration Pond Area (WQV/(4+1.33*H))	12621 SF	20390 SF
Filtration Pond Volume		116815 CF

SHEET NUMBER  
EX-I






PARKLAND TO BE DEDICATED TO CITY OF AUSTIN					
BLOCK	MF UNITS	HOTEL UNITS	PARKLAND REQUIRED (AC)	CREDITED PARKLAND PROVIDED (AC)	TOTAL PARKLAND PROVIDED (AC)
C	325	0	9.46	18.27	18.27
TOTAL:	325	0	9.46	18.27	18.27

\* PARKLAND LOTS SHALL BE DEDICATED AT TIME OF SUBSEQUENT BLOCK SITE PLAN.  
 \*\* IF PARKLAND PROVIDED IS LESS THAN THE AMOUNT REQUIRED, FEE IN LIEU MAY BE PAID FOR THE DIFFERENCE.

[illegible]

**Kimley»Horn**

© 2022 KIMLEY-HORN AND ASSOCIATES, INC.  
10814 JOLLYVILLE ROAD, AVALON IV, SUITE 200, AUSTIN, TX 78759  
PHONE: 512-418-1771 FAX: 512-418-1791  
[WWW.KIMLEY-HORN.COM](http://WWW.KIMLEY-HORN.COM)  
TEXAS REGISTERED ENGINEERING FIRM F-928

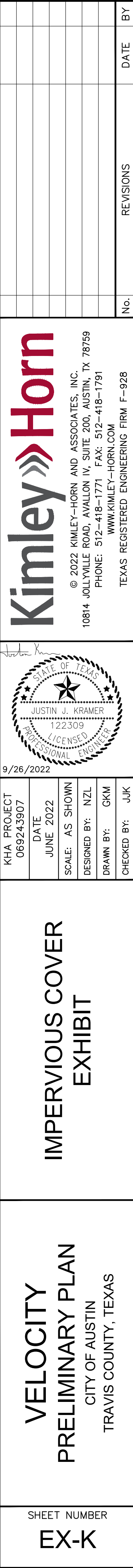
	<p>9/26/2022</p>
<p>KHA PROJECT 069243907</p>	<p>DATE JUNE 2022</p>
<p>SCALE: AS SHOWN</p>	<p>DESIGNED BY: NZL</p>
<p>DRAWN BY: GKM</p>	<p>CHECKED BY: JUK</p>

## PARKLAND DEDICATION

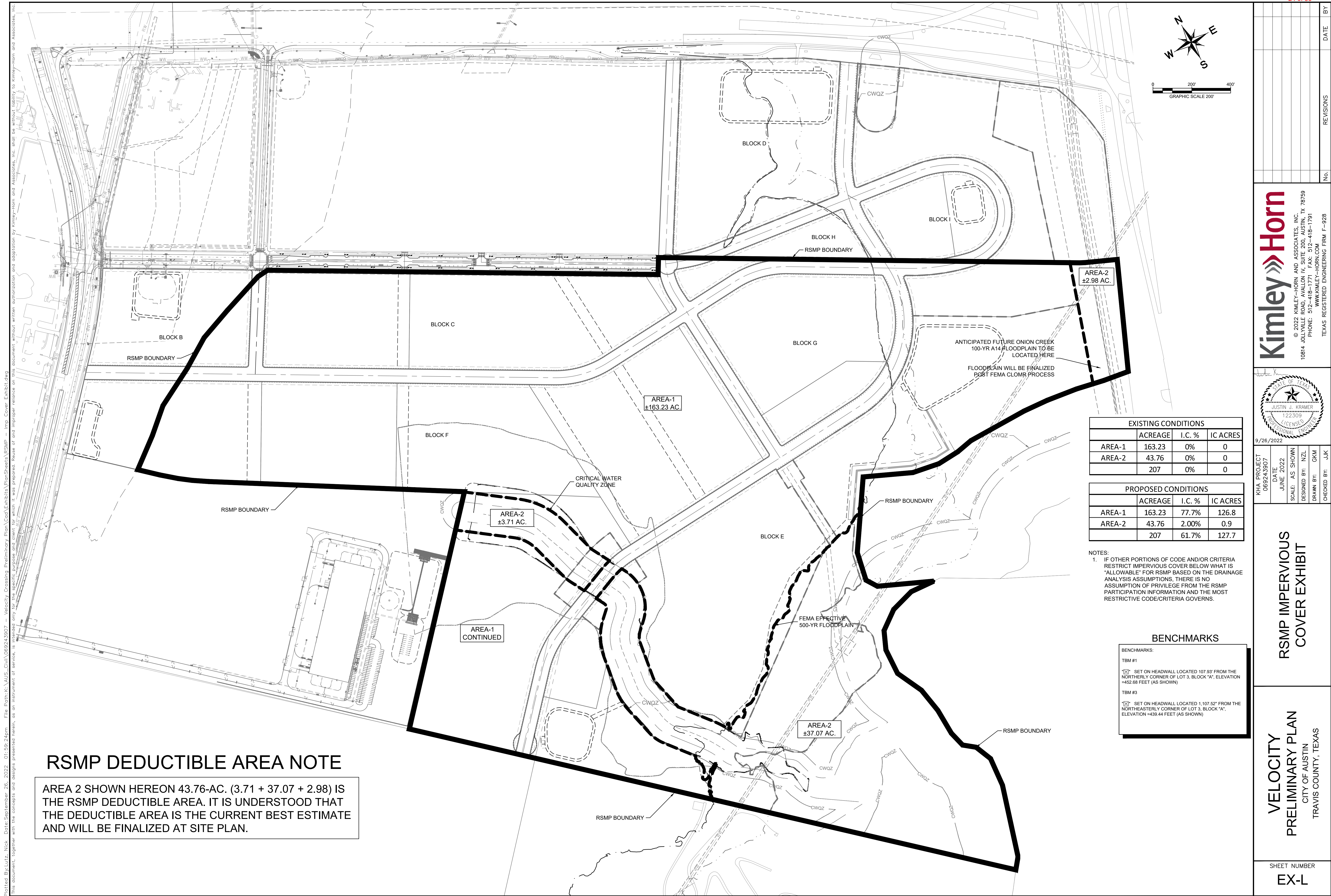
**VELOCITY**  
**PRELIMINARY PLAN**  
CITY OF AUSTIN  
TRAVIS COUNTY, TEXAS

SHEET NUMBER  
EX-J

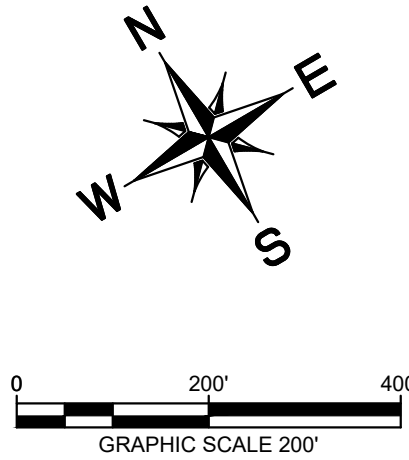
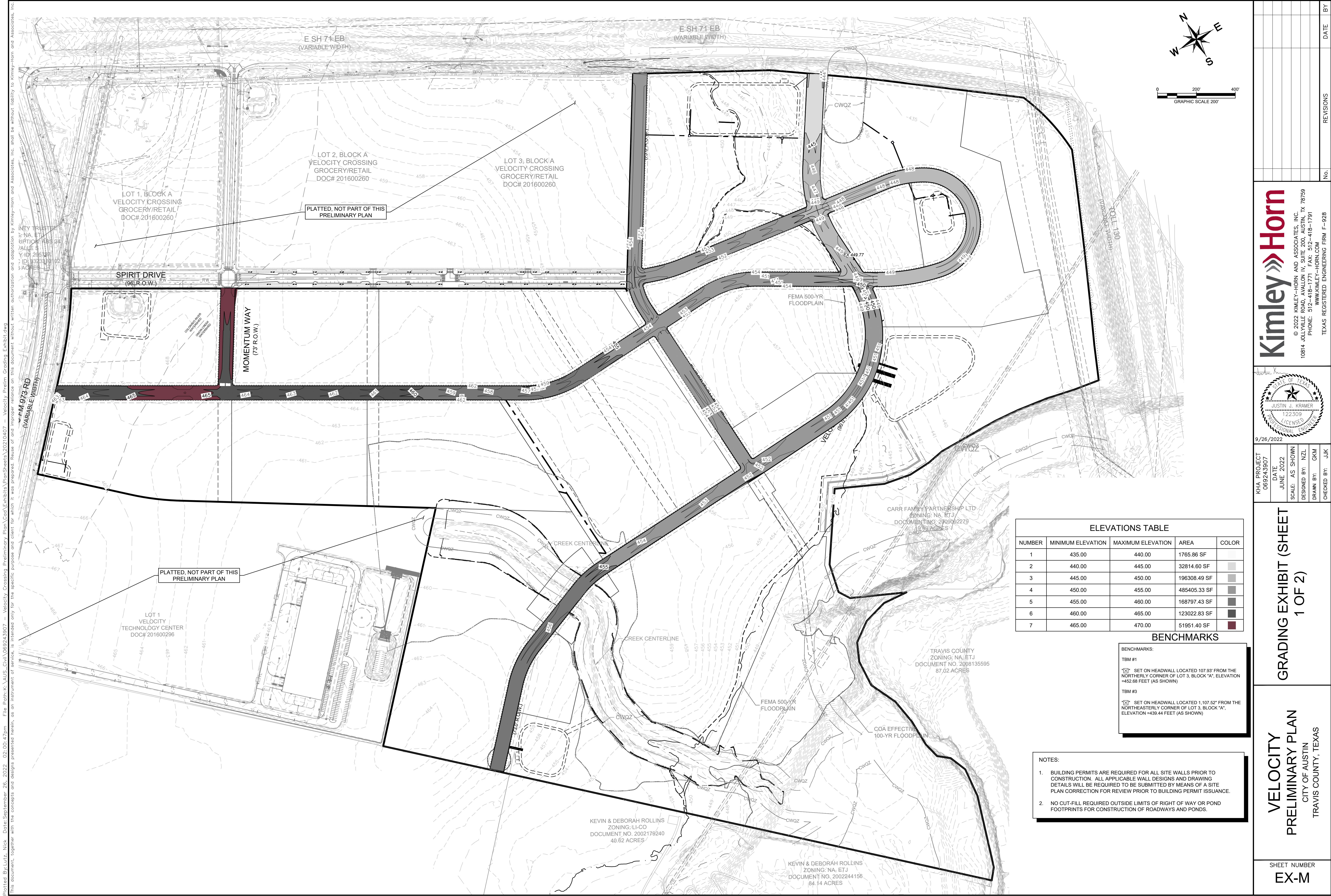












ELEVATIONS TABLE				
NUMBER	MINIMUM ELEVATION	MAXIMUM ELEVATION	AREA	COLOR
1	435.00	440.00	1765.86 SF	
2	440.00	445.00	32814.60 SF	
3	445.00	450.00	196308.49 SF	
4	450.00	455.00	485405.33 SF	
5	455.00	460.00	168797.43 SF	
6	460.00	465.00	123022.83 SF	
7	465.00	470.00	51951.40 SF	

BENCHMARKS	
BENCHMARKS:	
TBM #1	SET ON HEADWALL LOCATED 107.93' FROM THE NORTHERLY CORNER OF LOT 3, BLOCK "A", ELEVATION =462.68 FEET (AS SHOWN)
TBM #3	SET ON HEADWALL LOCATED 1,107.52' FROM THE NORTHEASTERLY CORNER OF LOT 3, BLOCK "A", ELEVATION =439.44 FEET (AS SHOWN)

- NOTES:
- BUILDING PERMITS ARE REQUIRED FOR ALL SITE WALLS PRIOR TO CONSTRUCTION. ALL APPLICABLE WALL DESIGNS AND DRAWING DETAILS WILL BE REQUIRED TO BE SUBMITTED BY MEANS OF A SITE PLAN CORRECTION FOR REVIEW PRIOR TO BUILDING PERMIT ISSUANCE.
  - NO CUT-FILL REQUIRED OUTSIDE LIMITS OF RIGHT OF WAY OR POND FOOTPRINTS FOR CONSTRUCTION OF ROADWAYS AND PONDS.

REVISIONS		DATE	BY
No.			

**Kimley»Horn**

© 2022 KIMLEY-HORN AND ASSOCIATES, INC.  
10814 JOLLYVILLE ROAD, AVALON IV, SUITE 200, AUSTIN, TX 78759  
PHONE: 512-418-1771 FAX: 512-418-791  
WWW.KIMLEY-HORN.COM  
TEXAS REGISTERED ENGINEERING FIRM F-928

STATE OF TEXAS  
JUSTIN J. KRAMER  
122309  
LICENSED PROFESSIONAL ENGINEER

KHA PROJECT	069243907
DATE	JUNE 2022
SCALE	AS SHOWN
DESIGNED BY:	NZL
DRAWN BY:	GKM
CHECKED BY:	JUK

GRADING EXHIBIT (SHEET 1 OF 2)

VELOCITY PRELIMINARY PLAN  
CITY OF AUSTIN  
TRAVIS COUNTY, TEXAS

SHEET NUMBER  
**EX-M**