

Resolution Item #89 (6/16/22)

# Establishing an Intergenerational and Resource and Activity Center

---

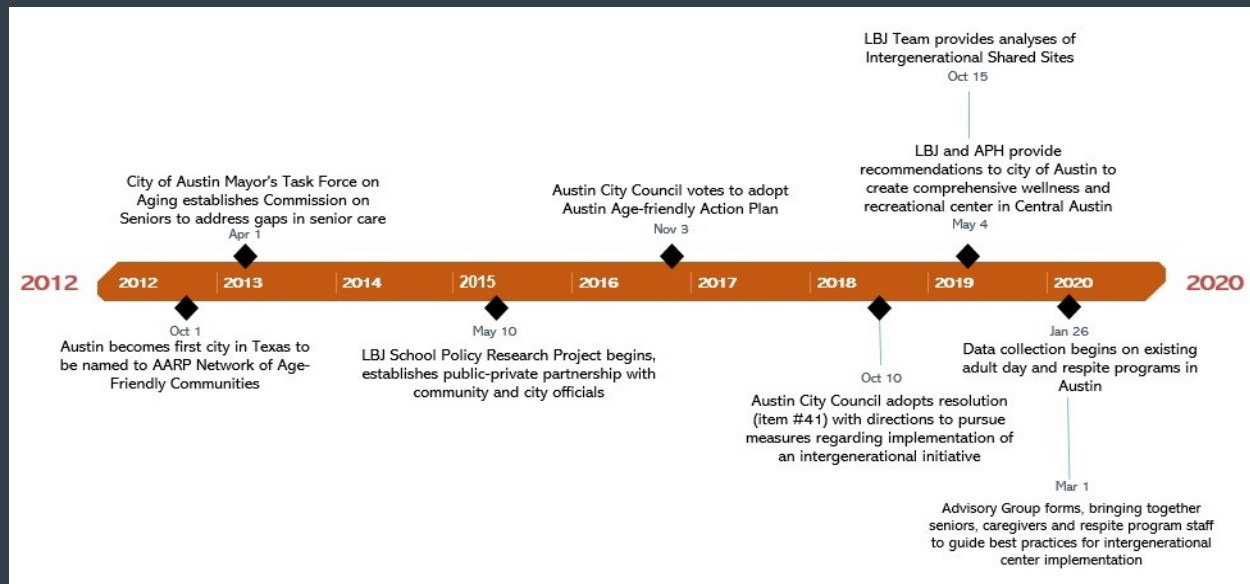
Presentation  
To  
Community Development  
Commission  
October 11, 2022



# Problem

*The City of Austin suffers from a gap in intergenerational services and adult day health care for low-income seniors and for children.*

# Brief Project History\*



9/1/2020- Established Intergenerational Day Center Advisory Group for providing information and guidance to Austin Public Health, AGE of Central Texas and Sam Woollard and Associates (consultants) for implementation of Resolution items #41.

## 2022

Subsequent to Resolution #41 (10/18/18), the City approves the City Manager “to study the feasibility and fiscal impact of housing an Intergenerational Resource and Activity Center program in the Nash Hernandez Building.” Deadline 10/13/2022

# IDC Advisory Group

Suzanne Anderson

Jacqueline Angel

Amy Bryan

Mary Sue Clyne

Selma D'Mello

Karen Fingerman

Clarke Heidrick

Kent Herring

Michael Hole

Emi Johnson

Cynthia Klemmer

Adila Lobo

Cynthia McCollum

Neda Norouzi

Sam Storey

Tabitha Taylor

Monika Gehl

Nathan Fernandez

Brady Gratten

Cesar De Leon

Cynthia Valdez

Henry Van de Putte

*Executive Director Age*

*UT Austin Wilbur J. Cohen Professor of Health  
and Social Policy*

*Director, Priscilla Pond Flawn Child and Family  
Laboratory*

*Board Chair, Chariot Austin*

*Caregiver*

*Co-Director, Texas Aging and Longevity Center*

*RBJ Board of Directors*

*CEO Family Eldercare*

*Professor Dell Medical School, Director of The  
Impact Factory*

*Austin City Library*

*City of Austin PARD*

*Deloitte/ Caregiver*

*Director, Open Door Preschool*

*Assistant Professor of Architecture, UTSA*

*Economic Development Director*

*City of Austin*

*Planner, Former UT Student*

*Travis County*

*Martin Middle School*

*Martin Middle School*

*Central Health*

*Meals on Wheels*

James Hayes

Jerilyn Rainosek

Jodi Lane

Joyce Hefner

Kelly Maltsberger

Lorene Philips

Lori Renteria

Ninette Siby

Ricardo Soliz

Shiyang Zhang

*Austin ISD*

*Recreation Programs Supervisor, City of Austin*

*Fruitful Commons*

*Family Eldercare*

*Senior Activity Center, City of Austin*

*Impact Austin*

*Resident and Advocate*

*UT Student*

*City of Austin PARD*

*UT PHD Candidate*



- *City of Austin should prioritize an adult day health center*
- *City budget should prioritize health and social services*



In “Young, Hip Austin is Getting Old: A New Experiment in Dealing with the Challenge” **two-thirds of low-income seniors reported they would switch providers** for a health and wellness model such as an Intergenerational Day Center (pg. 82)





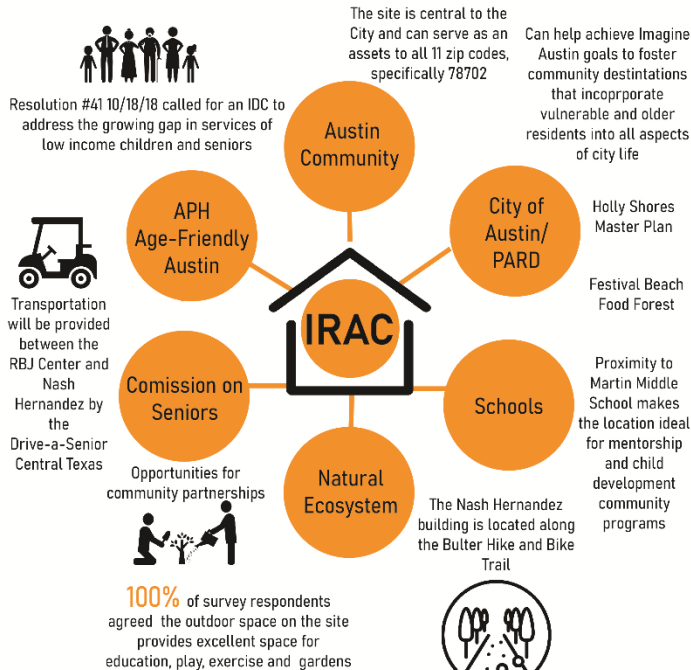
# Solution

*IDC:: Making the Most of  
Shared Spaces in Public  
Places*

## Nash Hernandez Building

### IRAC Nash Hernandez Proposal

**Objective:** Austin has recommended the Nash Hernandez building as a potential joint-use site for the IRAC Pilot. Together, the IRAC initiative and the Holly Shores Master Plan share a mutual vision for making a center for community activity. The IRAC will help support the City of Austin's goals to provide age-friendly activities and services for public use.



Advisory Group Members: Suzanne Anderson, Jacqueline Angel, Amy Bryan, Mary Sue Clyne, Selma D'Mello, Nathan Fernandez, Karen Fingerma, Monika Gehl, Brandy Gratten, Clarke Heidrick, Kent Herring, Michael Hole, Emi Johnson, Cynthia Klemmer, Alma Lyra, Aldila Lobo, Neda Noruzi, Stephanie Perez, Jarilyn Rainosek, Lori Renteria, Kelly Maltberger, Lorne Phillips, Ricardo Solis, Samuel Storey, Tabitha Taylor, Alida Lobo, Cynthia McCollum, Cesar De Leon, Cynthia Valdez, Henry Van de Putte, James Hayes, Jodi Lane, Ninette Siby, and Shiyang Zhang

10/07/2022

# Program Participant Eligibility\*

	Adults	Child Day Care	Middle School
Age Range	65 years and older	18 months-4 years	11-13 years
Income Status	200% Federal Poverty Level	200% Federal Poverty Level	N/A
Insurance Status	Medicare-Medicaid	N/A	N/A
Licensure	Health and Human Services Commission	Department of Family and Protective Services	N/A

Source: An Intergenerational Day Center Initiative in Austin: Issue Brief, p. 17; 2019.

# Intergenerational Day Center (IDC)

“Unite disparate age groups in quasi-kin relationships to meet the care needs of multiple generations of families”



Optimizes shared space in public places.

\*Report by GU and Eisner Foundation “The Best of Both Worlds: A Closer Look at Creating Spaces that Connect Young and Old”

\*Jarrott, S. & Bruno, K. (2007) “Shared Site Intergenerational Programs: A Case Study.” Journal of Applied Gerontology, 26(3) p. 239



# IDC Benefits

## Social

Reduce levels of isolation and depression in seniors and ageism in children\*

## Physical

Increase seniors' mobility and levels of empathy for both groups\*\*

## Respite

Provide respite for caregivers with young children and older parents\*\*\*

## Economic

Both age groups share space and programs that prevent competition for funding\*\*\*\*

### Sources:

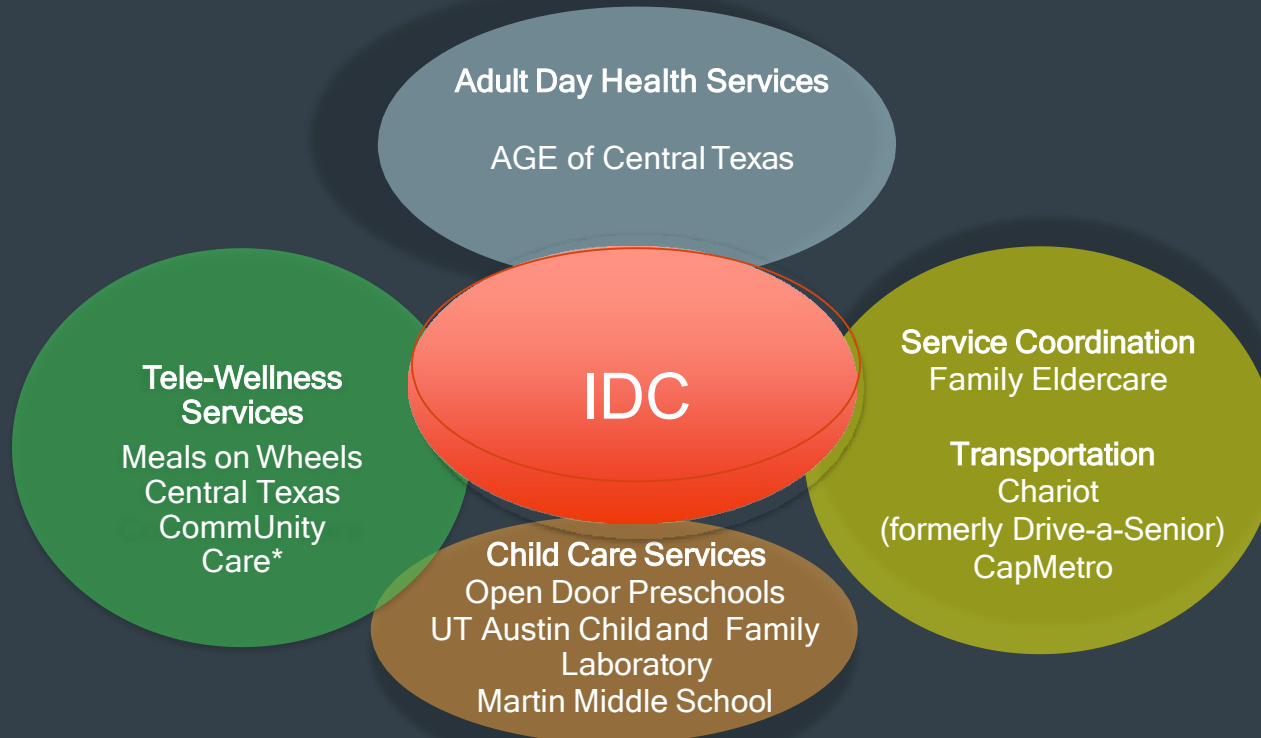
\*Andreoletti, 2016;

\*\*Jayson, 2018

\*\*\*López-Anuarbe, 2013

\*\*\*\*Jarrott, 2008

# IDC Public-Private Model- Austin



*APH works closely with Central Health and their partner CommUnity Care to provide quality, affordable health and wellness services to residents. 2018, City of Austin . Bond Proposal to Create Senior Center at the RBJ Health Building;, p.4. Town Square , <https://www.townsquare.net/adult-day-care/texas/north-west-austin/>*

# IRAC FEATURES

1. Multipurpose community use; open 7:30 am to 9 pm
2. Brings together all age groups and persons with and without disabilities
3. Specializes in children and adult day services in a clean and intergenerational environment
4. Core values: Compassion, care and dignity
5. Voluntary IDC participation
6. Community access to conference room promotes social and productive engagement



# Program Participant Eligibility\*

	Adults	Children	Middle School
Age Range	65 years and older	18 months-4 years	11-13 years
Income Status	200% Federal Poverty Level	200% Federal Poverty Level	N/A
Insurance Status	Medicare-Medicaid	N/A	N/A
Licensure	Health and Human Services Commission	Department of Family and Protective Services	N/A

Source: An Intergenerational Day Center Initiative in Austin: Issue Brief, p. 17; 2019.

# Nash Hernandez Building

## *Survey Highlights*





# Tours and Findings



Carol Fraser



From left, Brandy Gratten, Sam Woollard, Lori Renteria, Pio Renteria, Amy Bryan, Ricardo Soliz, Andrew Levack, Cindy Klemmer, Suzanne Anderson, Cynthia McCollum; May 27, 2021



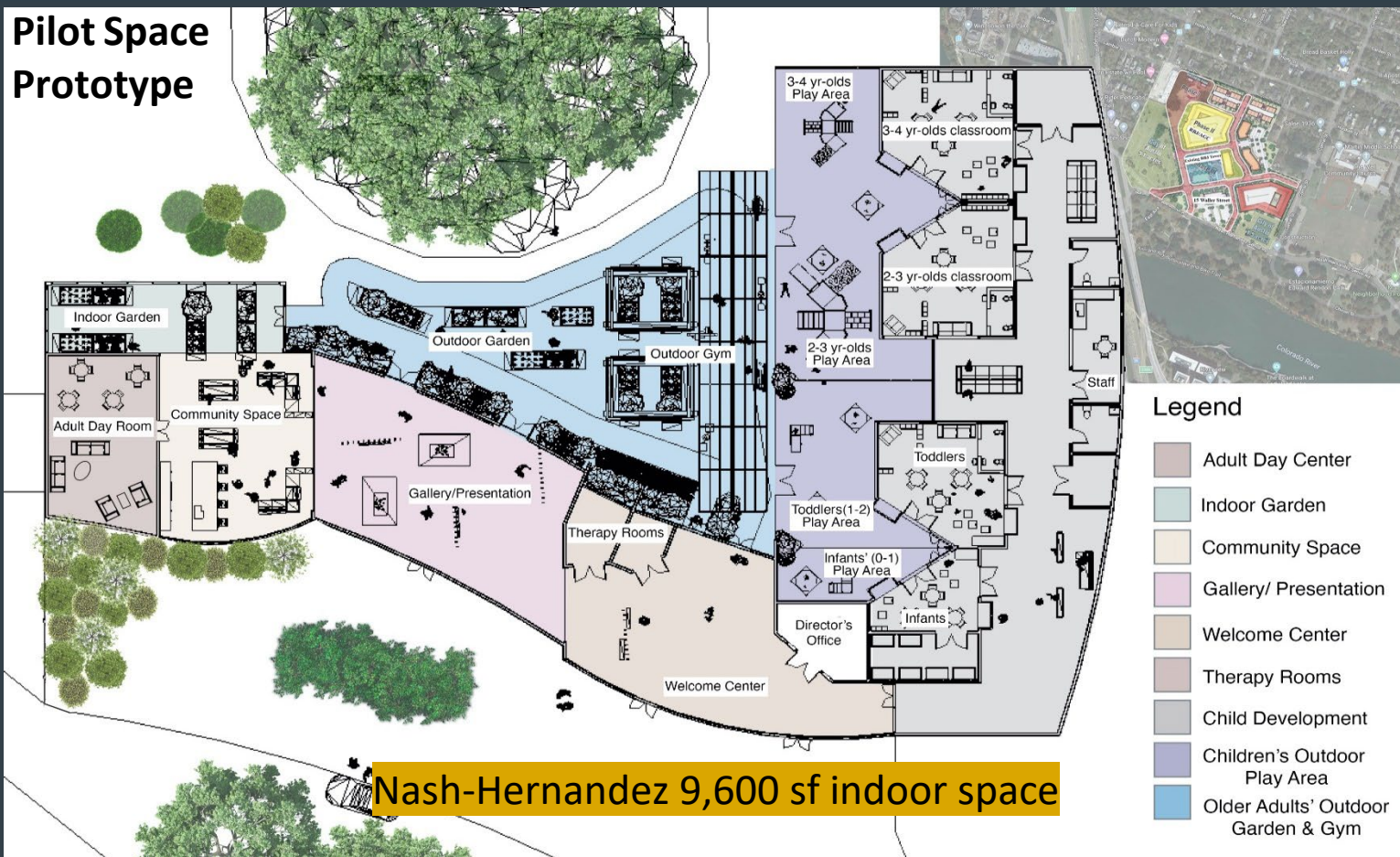
- Mary Sue Clyne
- Selma D'Mello
- Monika Gehl
- Adam Hauser
- Clarke Heidrick
- Cynthia Klemmer
- Sheila Matthews
- Jerilyn Rainosek
- Sam Storey
- Neda Norouzi
- Monika Gehl
- Jacqui Angel

*Majority of responses indicated that the Nash Hernandez Building would be an excellent/good fit for the IDC in all aspects of design & function of an ideal Age-Friendly Austin community.<sup>1</sup>*

<sup>1</sup>[https://austinup.org/wp-content/uploads/2019/04/livability\\_symposium\\_slides\\_angel2019.pdfmmr!](https://austinup.org/wp-content/uploads/2019/04/livability_symposium_slides_angel2019.pdfmmr!)



## Pilot Space Prototype





Main Entrance



Welcome Center

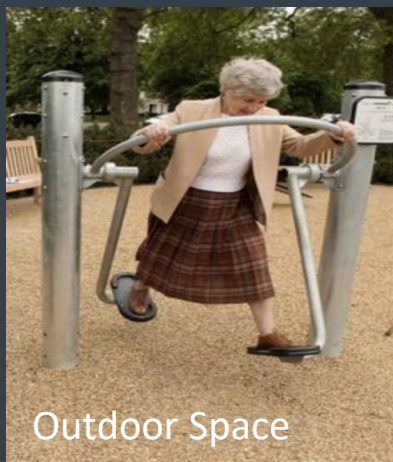
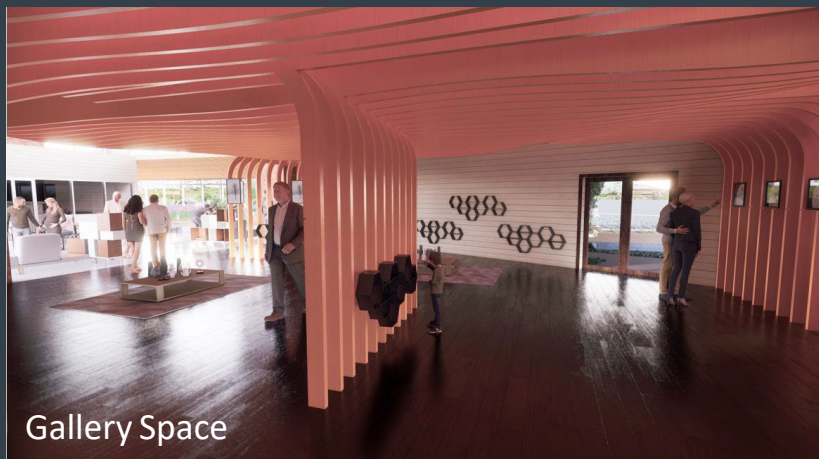


Older Adults' Outdoor Gym | Children's Playground



Indoor Garden





# Adult Day Care

AGE of Central Texas- partner

Serves seniors that do not fit eligibility at Adult Day Center at Nash



Age of Central Texas  
3710 Cedar St,  
Austin, TX 78705

In 2022, AGE breaks new ground for new social and wellness center serving up to 75 older adult at 9400 Alice Mae Lane, Austin, near Southpark Meadow.

# IRAC Feasibility- Curriculum

*Program is designed to provide daily, weekly, and monthly cross-age interactions.*

*Key elements of sample syllabi are available for review.*

## *IDC Curriculum Work Group includes*

*Amy Bryant (UT Austin), Suzanne Anderson (AGE), Cynthia McCollum (Open Door Preschool), Mikhayla Gustafson (Mike's Place at Meals on Wheels and More), Emi Johnson (PARD), and Henry Van de Putte (Meals and Wheels Central Texas).*

# IRAC Estimated Budget

## *Capital Costs (City)*

\$200 per square foot (sf) to rehabilitate building and outdoor space 100 (sf) square foot to match spatial needs.

PARD Board's estimates Nash renovation cost 9,600 (sf) building at **\$2.2 million**.

## *Start-Up, Operational Costs and In-kind Aid*

### Adult Day Health Center

\$1.2 million

### Child Development Center

\$1.5 million

### IDC Program

\$250,000

### Services Coordination, Tele-Behavioral Health

\$300,000

### Transportation

450,000

### Est. Total

\$3.7 million



# IRAC Feasibility- Curriculum (continued)

Program is designed to provide daily, weekly, and monthly cross-age interactions.

Key elements of sample syllabi are available for review.

## IDC Curriculum Work Group includes

Amy Bryant (UT Austin), Suzanne Anderson (AGE), Cynthia McCollum (Open Door Preschool), Mikhayla Gustafson (Mike's Place at Meals on Wheels and More), Emi Johnson (PARD), and Henry Van de Putte (Meals and Wheels Central Texas).

# Next Steps

1. Conduct feasibility of IDC Pilot Study with Parks and Recreation Department, Resolution #89 (6/16/22)
2. Provide monthly reports to the City of Austin's Commission on Seniors Domain 8 Working Group

3. Report findings

“Livability and Longevity Symposium  
“Changing Care Needs in an Aging Metropolis”

April 17, 2023

Hosted by

UT Austin LBJ School and TALC

# Partnerships

## Letters of Support and Commitment

- AGE of Central Texas
- Anderson Charitable Foundation
- Austin Geriatric Center (RBJ)
- Chariot (formerly Drive-A-Senior)
- CommUnityCare
- Family Eldercare
- Meals on Wheels Central Texas
- St. David's Foundation
- Toler Keep Families Giving Foundation
- United Way of Greater Austin

## UT Austin Collaborators

- Dell Medical School
- McCombs School of Business
- Moody College of Communication
- Steve Hicks School of Social Work
- UT Health Science Center School of Public Health
- UT School of Nursing
- TX Aging & Longevity Consortium

## Community Supports

- Community Leaders
- Elected Officials
- Faculty
- Lakeside Apartments
- Varsity Generation/Seniors
- Students

# Acknowledgments

**Community Co-Production Team** Seniors, Caregivers, Providers and Volunteers

**Guest Speakers** Dr. Shannon Jarrott, Dr. Christopher Phillipson, Adam Hauser, Andrew Levack

**Amy Bryan**, Ph.D., LCSW-S, PPT-S, Director, Priscilla Pond Flawn Child and Family Laboratory, UT Austin

**Public-Private Partners** St. David's Foundation, Commission on Seniors, Austin Public Health (APH)\* *Full List*