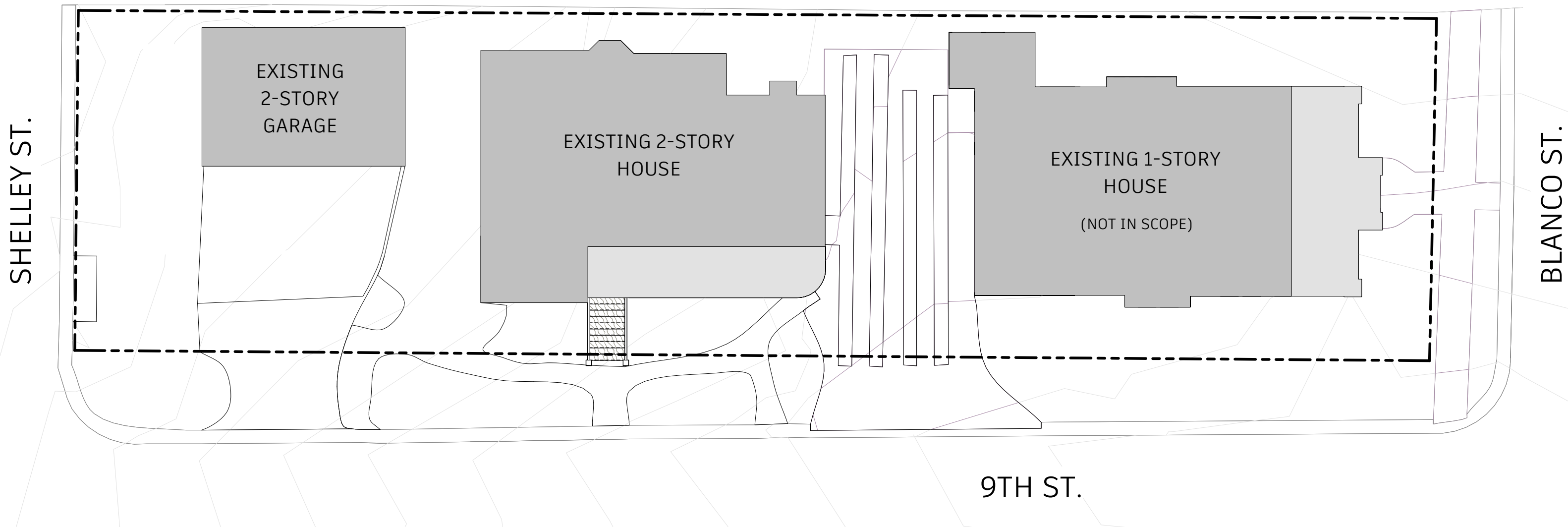


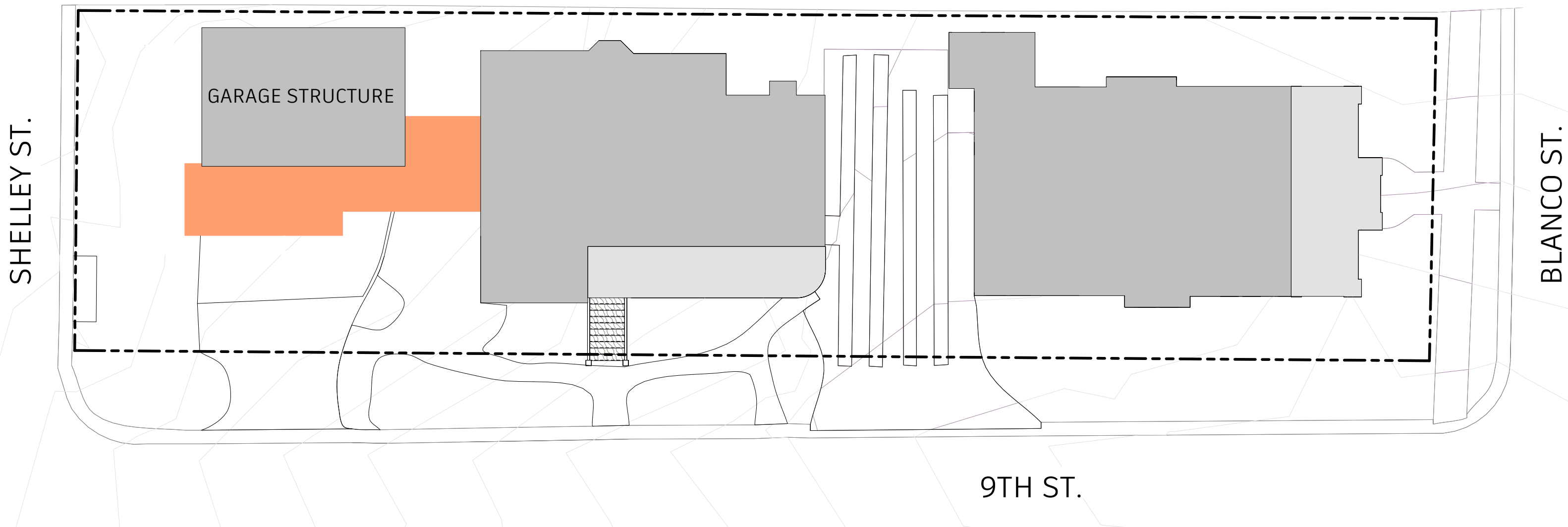
9th + shelley
1202 W. 9th St





This presentation shows both our initial and revised design proposals for an addition to the structures at 1202 W. 9th St, & 901 Shelley Ave. In The Castle Hill Historic District.

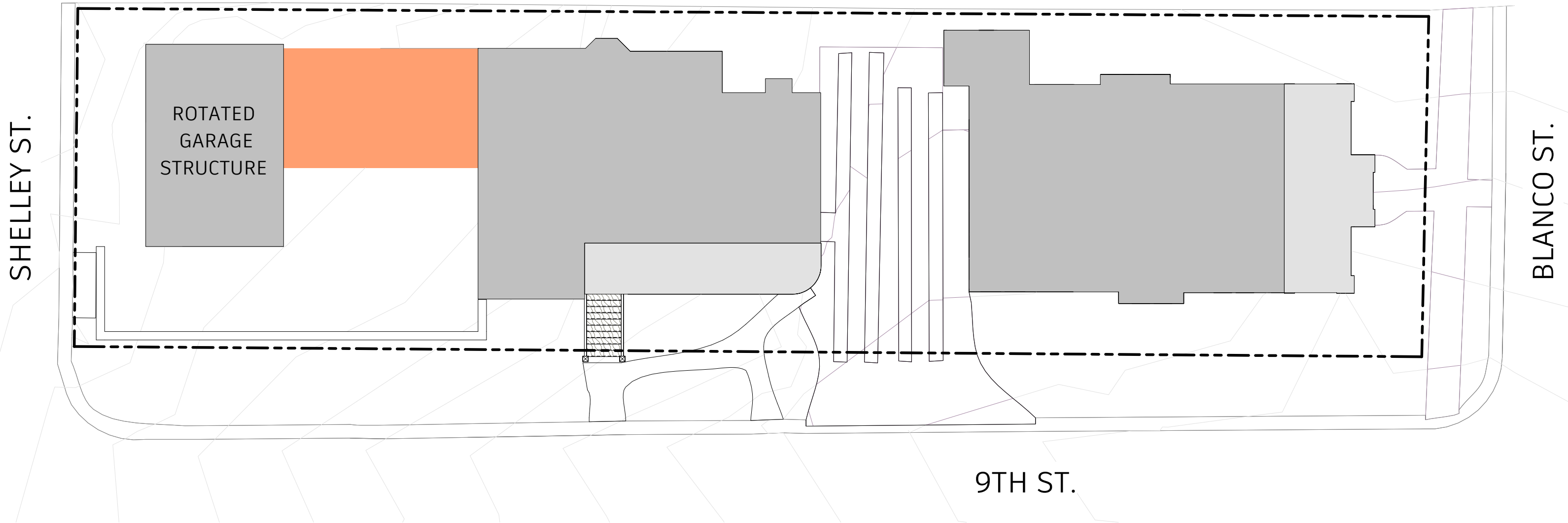


EXISTING CONDITIONS



PREVIOUS PROPOSAL

-  existing structures
-  proposed addition



REVISED PROPOSAL

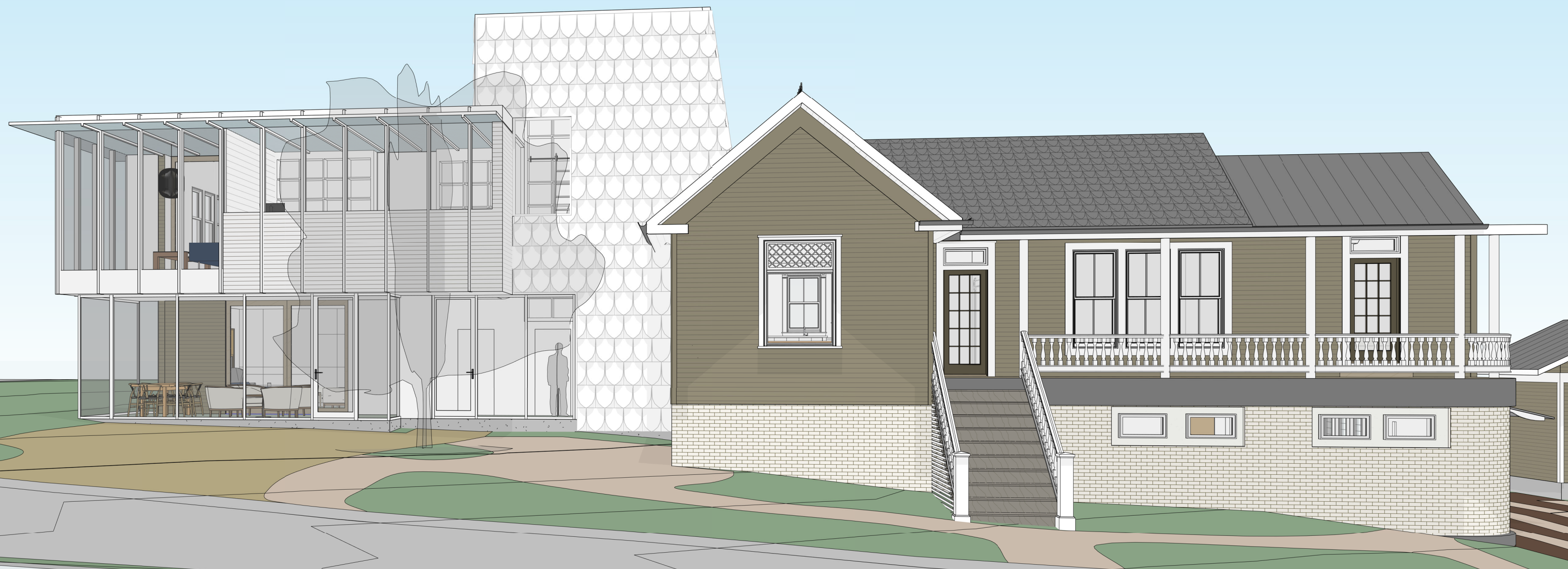
- existing structures
- proposed addition

WE PRESENTED OUR INITIAL DESIGN PROPOSAL AT THE SEPTEMBER 12TH ARCHITECTURAL REVIEW COMMITTEE MEETING WHERE WE RECEIVED SOME HELPFUL AND CONSTRUCTIVE INPUT FROM SEVERAL OF THE COMMISSIONERS:

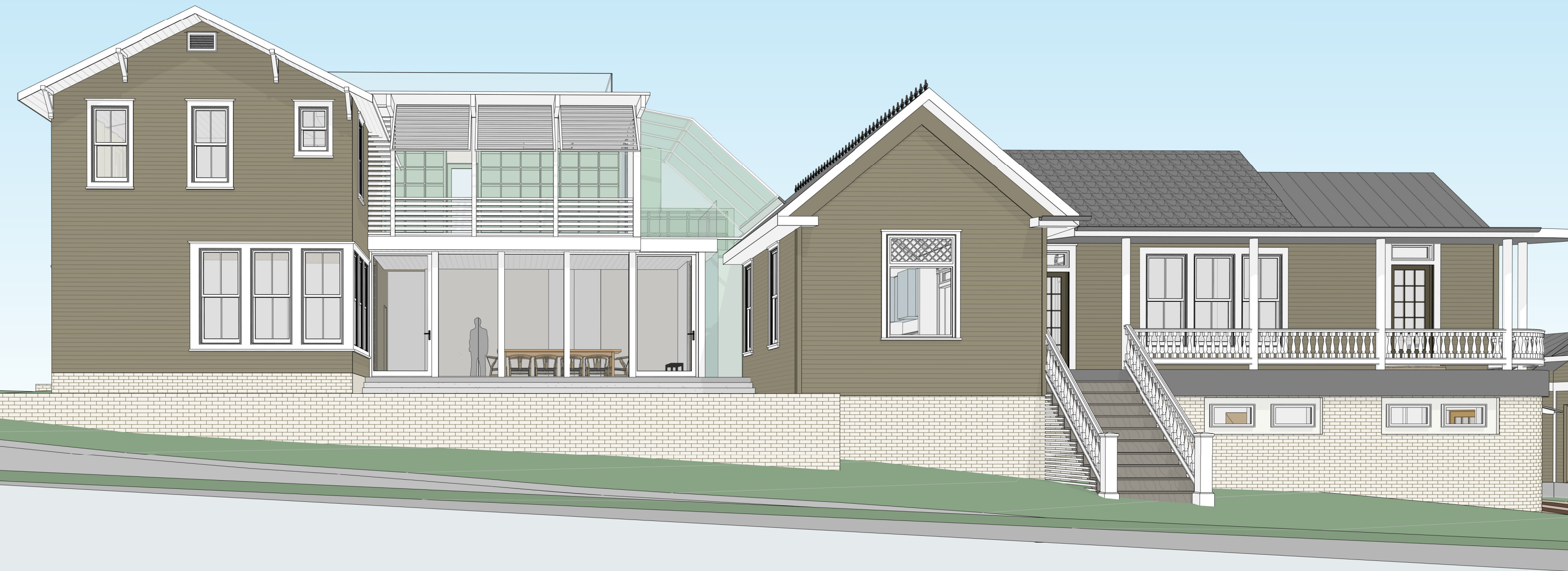
- ALL FACADES FACING ALL PUBLIC STREETS SHOULD NOT BE OBSCURED OR ALTERED.

- THE HYPHEN ELEMENT SHOULD BE MORE MODEST, SYMPATHETIC AND LESS IMPOSING TO THE HISTORIC STRUCTURES.

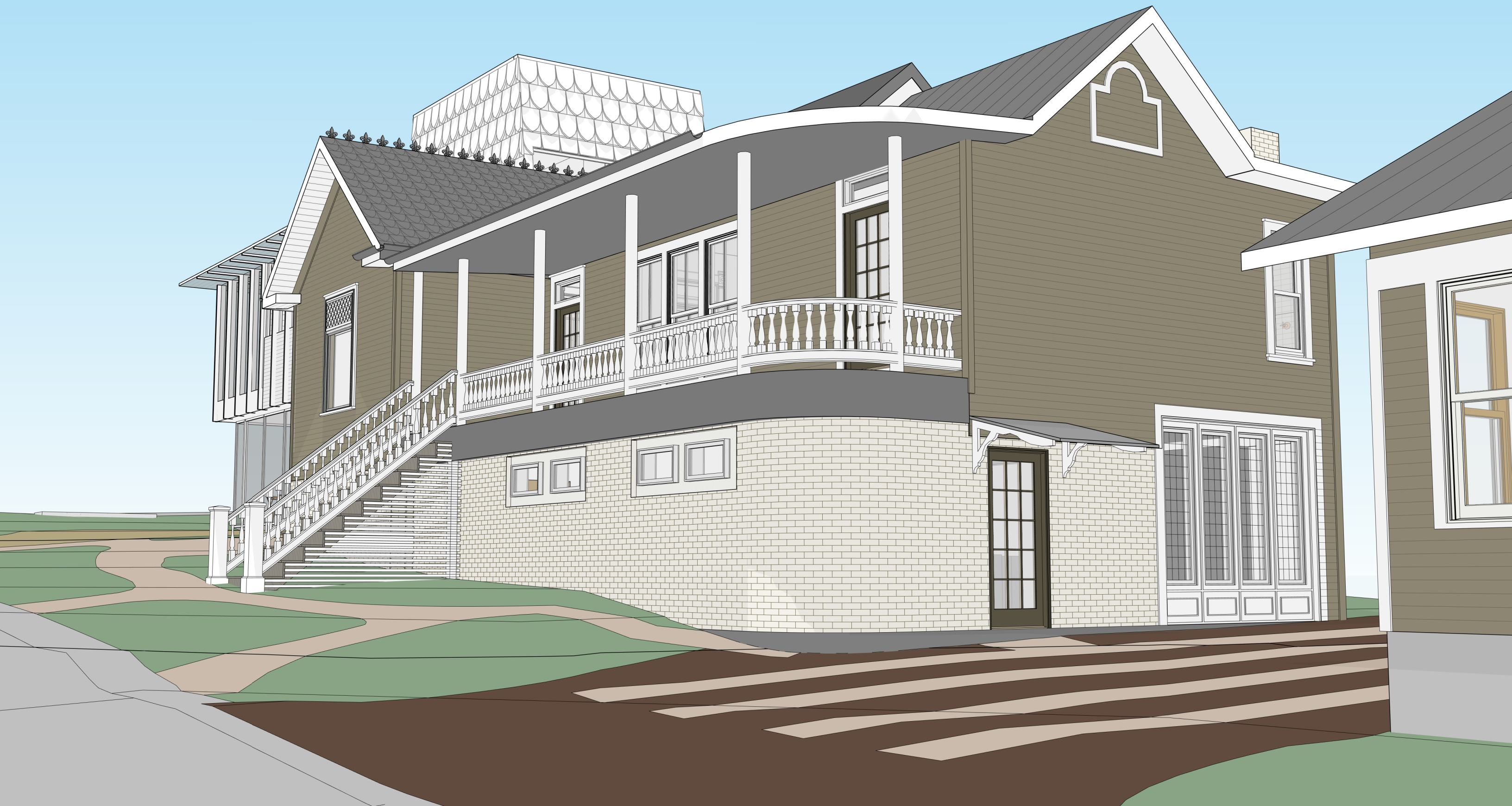




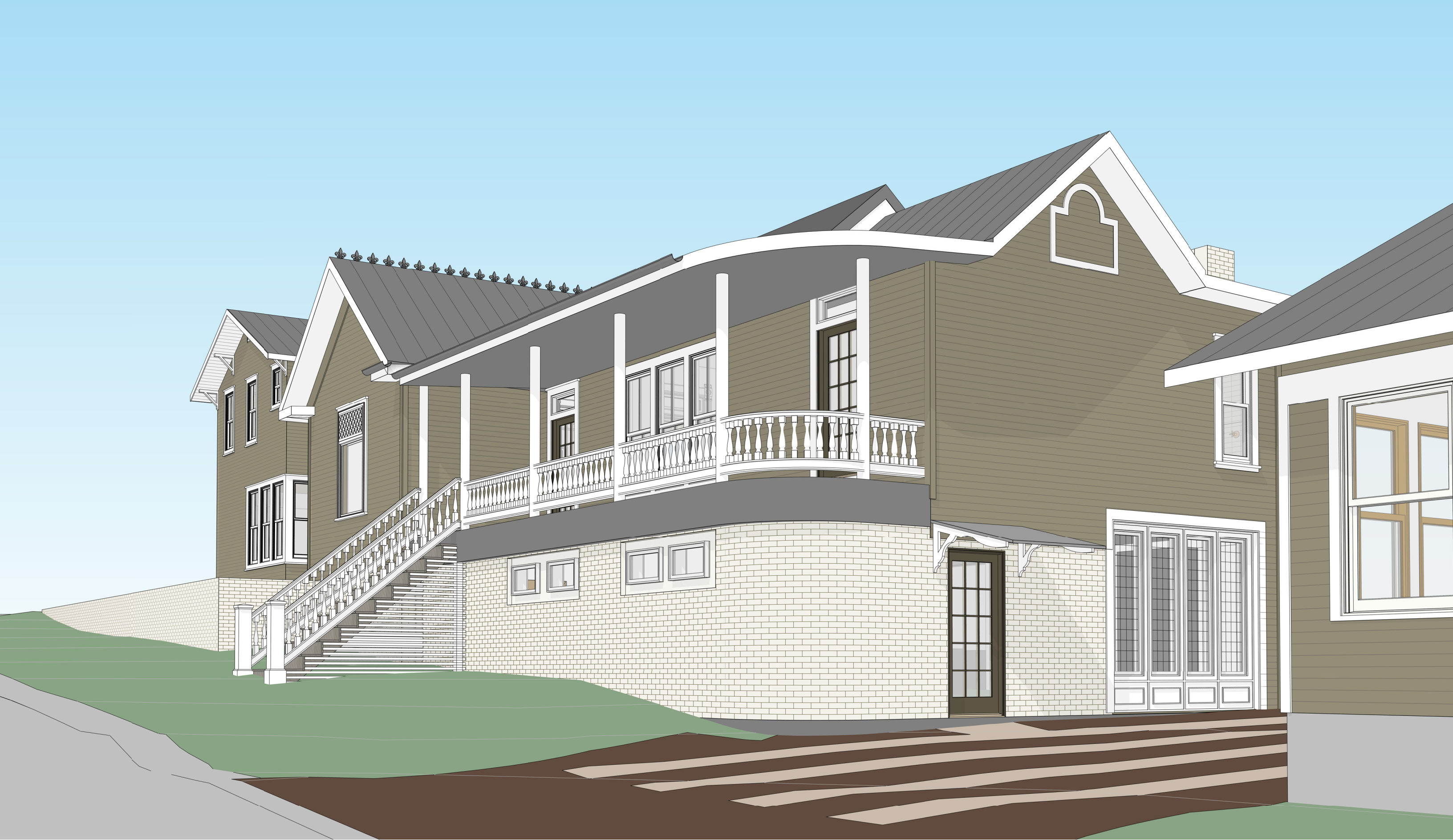
PREVIOUS PROPOSAL



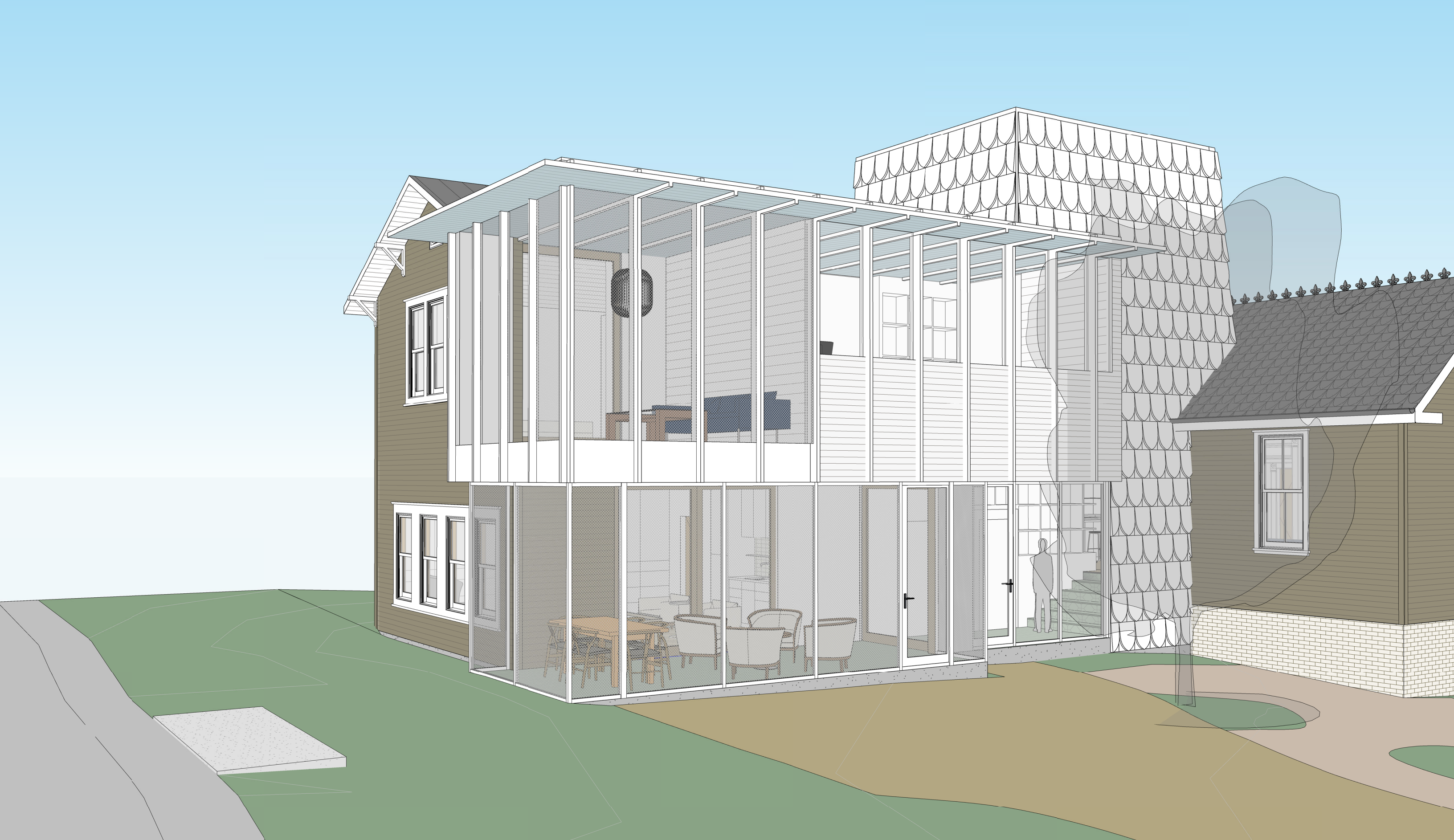
REVISED PROPOSAL



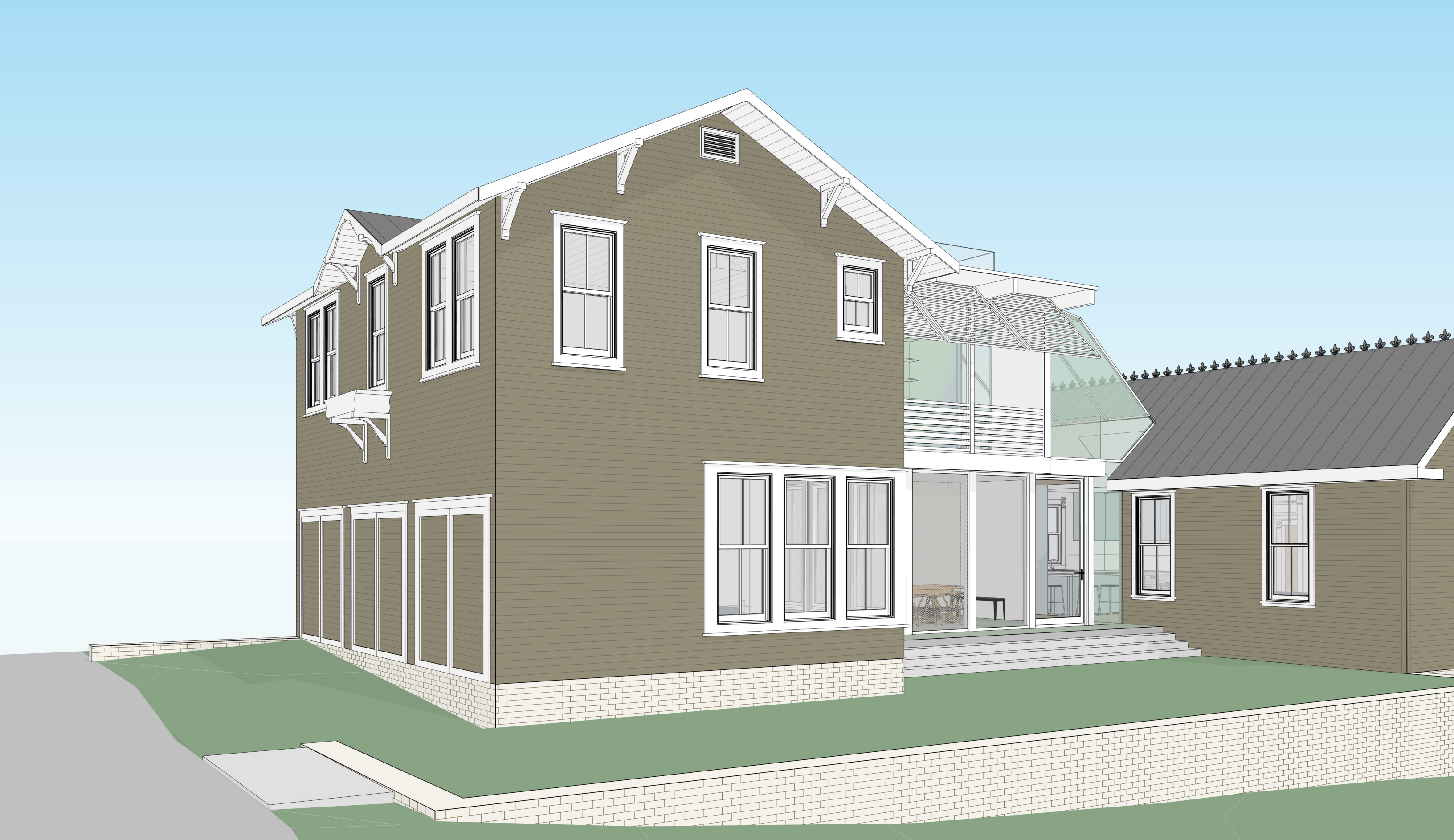
PREVIOUS PROPOSAL



REVISED PROPOSAL



PREVIOUS PROPOSAL



REVISED PROPOSAL