

South Austin Regional WWTP Capital Improvement Project

Shay Ralls Roalson, PE
Assistant Director, Engineering

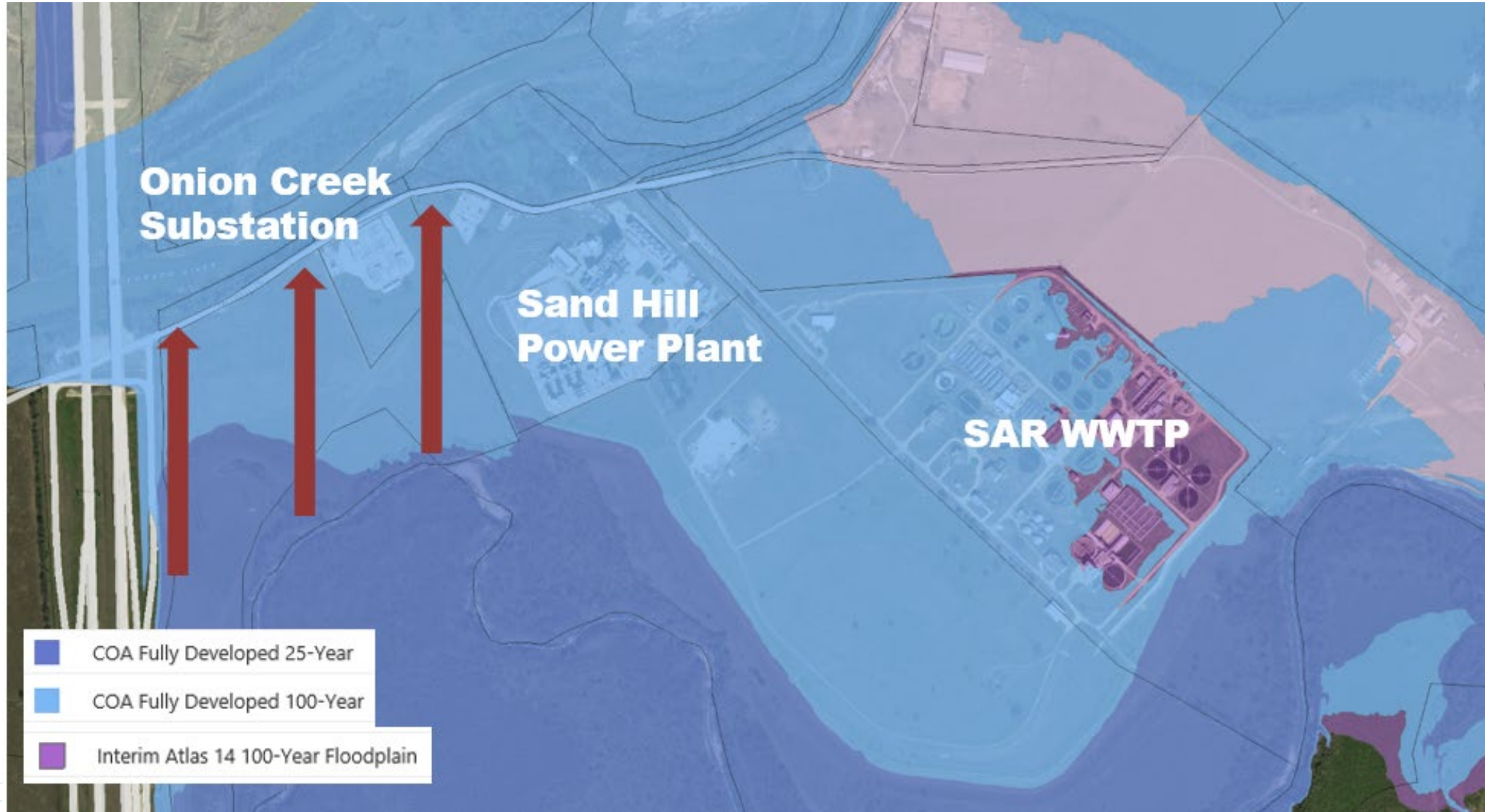
Charles Celauro, PE
Managing Engineer



Austin Water Oversight Committee
October 19, 2022

South Austin Regional WWTP Floodplain

Atlas 14 Floodplain



South Austin Regional WWTP Flood Wall

Currently in the study phase and pursuing grant options



South Austin Regional WWTP

Plant Layout



South Austin Regional WWTP

Trains A & B Improvements



- **Construction Cost:**
 - ❖ Estimated \$116,000,852
- **Project Milestones:**
 - ❖ Construction NTP: January 2023
 - ❖ Substantial Completion January 2027
- **RCA Commission Actions:**
 - ❖ November 2022 - Construction Contract & Construction Engineering Services

Electrical Substation No.1 Replacement

- **Construction Cost:**
 - ❖ Estimated \$30,000,000
- **Project Milestones:**
 - ❖ Construction NTP: June 2020
 - ❖ Substantial Completion November 2023



IMPROVEMENTS

- Bar Screens
- Grit Classifiers
- Grit Pumps
- Grit Blowers
- Monorail
- Demolition of Electrical Equipment

Train A & B Improvements

Preliminary Bldg. Improvements

South Austin Regional WWTP



IMPROVEMENTS

- Clarifier Drive
- Clarifier Rake
- Demolition and Replacement of Clarifier Trough
- Demolition and Replacement Clarifier Weirs
- New Scum Collection

Train A & B Improvements

Primary Clarifier Improvements

South Austin Regional WWTP



IMPROVEMENTS

- Basin Slide Gate Replacement
- Concrete Crack Repairs

Train A & B Improvements

Aeration Basin Improvements

South Austin Regional WWTP



IMPROVEMENTS

- Replace Return Activated Sludge Meters
- Replace Waste Activated Sludge Meters
- Demolition of Electrical Equipment

Train A & B Improvements

Secondary Treatment Bldg. Improvements

South Austin Regional WWTP



IMPROVEMENTS

- Clarifier Drive
- Clarifier Rake
- Demolition and Replacement Clarifier Weirs
- New Scum Collection

Train A & B Improvements

Final Clarifier Improvements

South Austin Regional WWTP



IMPROVEMENTS

- Remove Clarifier Drive
- Remove Clarifier Rake
- Install new Baffling Walls

Train A & B Improvements

Chlorine Contact Clarifier Improvements

South Austin Regional WWTP



IMPROVEMENTS

- New Elevated Electrical Building
- New Switchgear
- New Controls
- New SCADA Network Connections

Train A & B Improvements

New Electrical Buildings

South Austin Regional WWTP

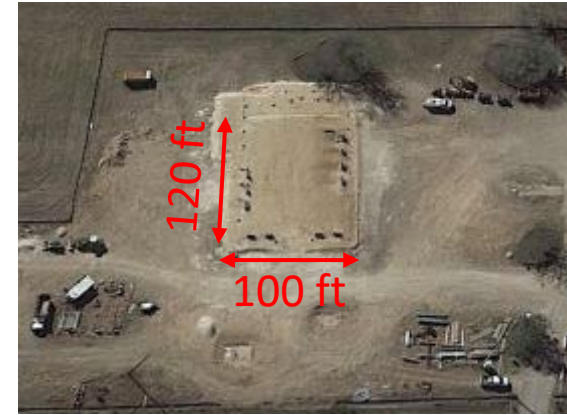


South Austin Regional WWTP

Existing Electrical Substation No.1



New Electrical Substation No.1



QUESTIONS



