

**waterloo  
greenway**





Texas Capitol

Frank C. Erwin, Jr.  
Special Events Center

Lady Bird Lake

CESAR CHAVEZ ST

2ND ST

3RD ST

4TH ST

5TH ST

6TH ST

7TH ST

8TH ST

9TH ST

10TH ST

11TH ST

12TH ST

13TH ST

14TH ST

15TH ST

Austin Convention Center

TRINITY ST

NECHES ST

Red River Cultural District

RED RIVER ST

SABINE ST

Emma S. Barrientos  
Mexican American  
Cultural Center

DAVIS ST

DRISKILL ST

RAINEY ST

Palm  
School

Dell Seton  
Medical Center

Dell Medical School  
at the University of Texas

Central Health Brackenridge  
Redevelopment Site

Frank C. Erwin, Jr.  
Special Events Center

IH-35

w  
g

# Waterloo Greenway

35 Acres of Restored and Improved  
Public Open Space





Texas Capitol

Frank C. Erwin, Jr.  
Special Events Center

SAN JACINTO BLVD

5TH ST

TRINITY ST

NECHES ST

RED RIVER ST

SABINE ST

IH-35

2ND ST

3RD ST

4TH ST

6TH ST

7TH ST

8TH ST

9TH ST

10TH ST

11TH ST

12TH ST

15TH ST

Lady Bird Lake

Pontoon  
Bridge

Emma S. Barrientos  
Mexican American  
Cultural Center

RAINEY ST

DAVIS ST

DRISKILL ST

Palm  
School

Palm  
Park

Austin Convention Center

Red River Cultural District

The  
Refuge

Symphony  
Square

Moody  
Amphitheater

Waterloo  
Park

Central Health Brackenridge  
Redevelopment Site

Dell Seton  
Medical Center

Dell Medical School  
at the University of Texas

Frank C. Erwin, Jr.  
Special Events Center

w  
g



# Waterloo Greenway

 Phase 1  Phase 2  Phase 3





**CREEK SHOW**<sup>20</sup><sub>22</sub>

**NOVEMBER 11-20 • CREEKSHOW.COM**



# CREEK SHOW 2022



**NOVEMBER 11-20**  
**CREEKSHOW.COM**

## CREEK SHOW OVERVIEW

Creek Show seeks to support and celebrate outstanding design while sparking conversation about the transformation of Waterloo Greenway into a series of urban parks, trails, around a restored Waller Creek.

Each year, Creek Show features light-based installations that inspire, delight, and engage the public along Waller Creek.



## GOALS OF CREEK SHOW

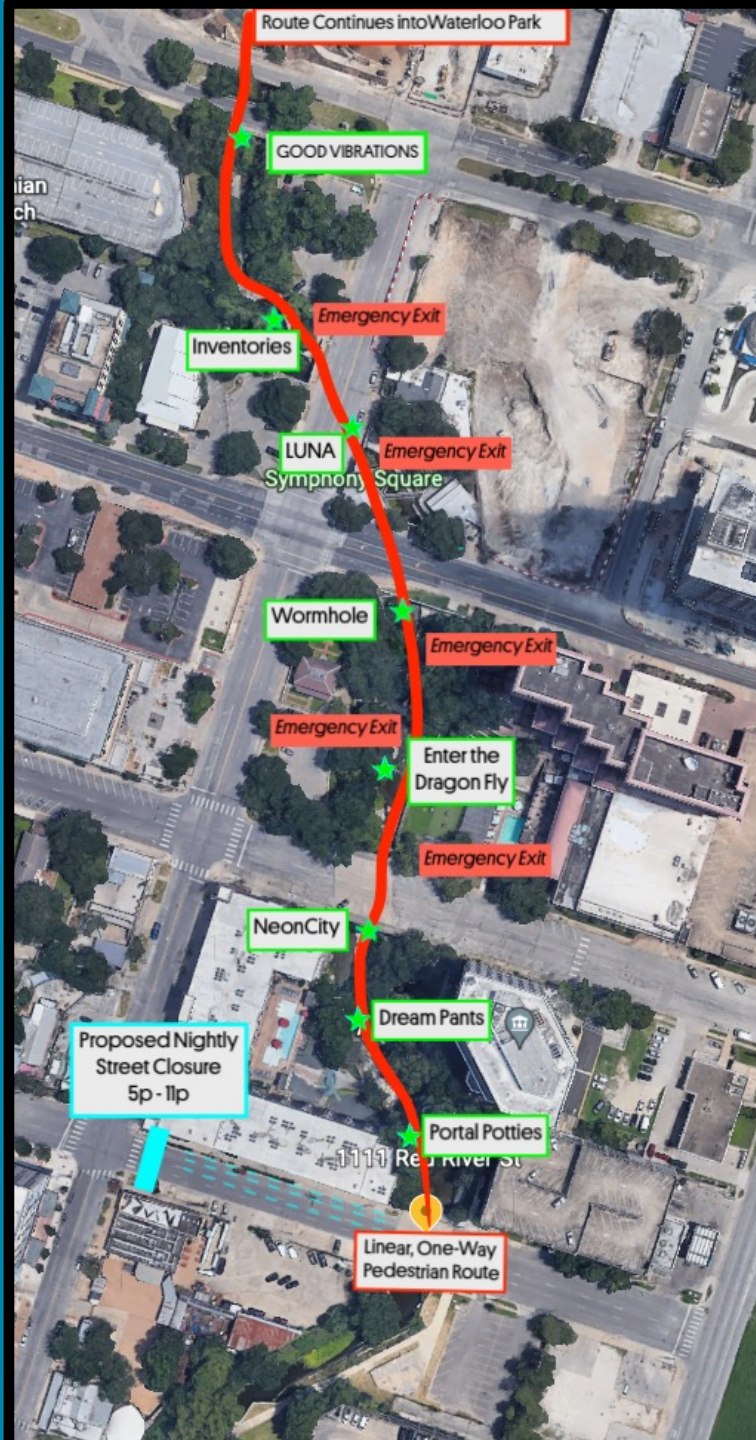
- Engage the Public
- Raise Awareness about Waterloo Greenway
- Highlight Austin-based artist and designers
- Activate Waller Creek / Waterloo Greenway







# CREEK LEVEL



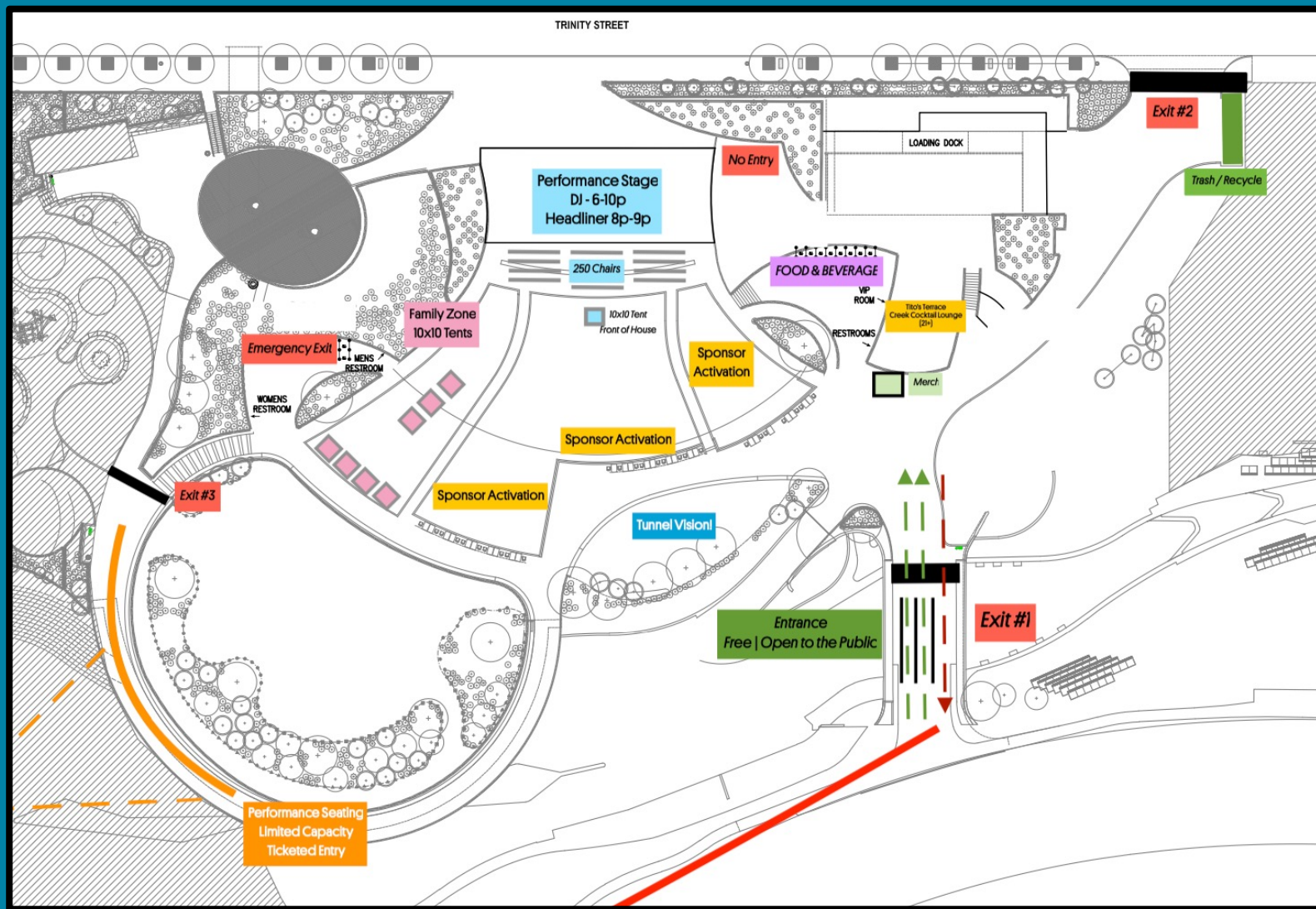
12<sup>TH</sup> ST



9<sup>TH</sup> ST



# WATERLOO PARK





# CREEK <sup>20</sup><sub>22</sub> SHOW

**ARTISTS &  
INSTALLATIONS**



Like an urban wardrobe to Narnia, inside this magical corridor of porta potties is a seamless tunnel of disco lights and whimsy.

Interior walls and all fixtures of the Portal Potties have been removed, creating a hallway illuminated by twinkling LED strips and panels, with an exit in the back that is not visible to outside viewers. Silhouettes of those who enter seem to disappear at the end of the tunnel, creating the illusion that entrants have been magically transported into Creek Show 2022.

This installation is a smile and a wink to look past the surface of things and to find beauty in unexpected places.



**PORTAL POTTY**  
SALMO GUNN





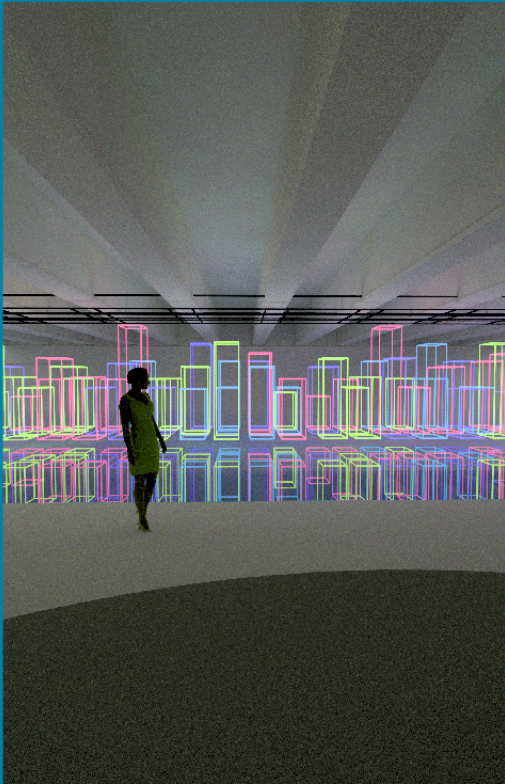
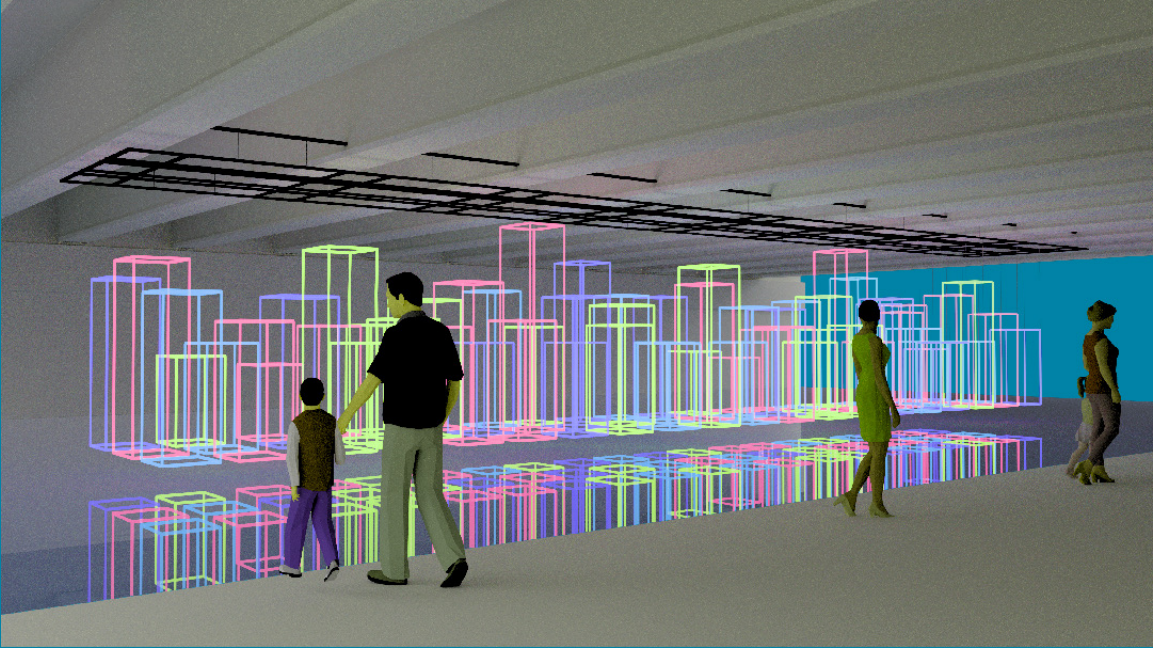


In that twilight time between awake and asleep, I became aware of a flickering dream. Down along the banks of a forgotten creek, strange apparitions were calling to me. Pants, just pants, frolicked about. They laughed and whispered, “Hey, check it out!” They glowed with the light of a promise to tell, that soon this place will be happy and well. Thanks dream pants for sharing your secret! I’m so delighted! (I don’t think I can keep it.)

**DREAM PANTS**  
BADE-SCHAFER







**NEONCITY**  
AIA AUSTIN

NeonCity is an abstract representation of Austin's downtown skyline on Waller Creek. The exhibition portrays the city's colorful and vibrant energy that can be appreciated across Lady Bird Lake, watching the lights of downtown and its reflection in the water. As the city expands, these building blocks represent the growth and potential opportunities as Austin becomes an ever-evolving city that creates opportunities for more people to come together as a community.





**ENTER THE DRAGONFLY**  
ODONATA

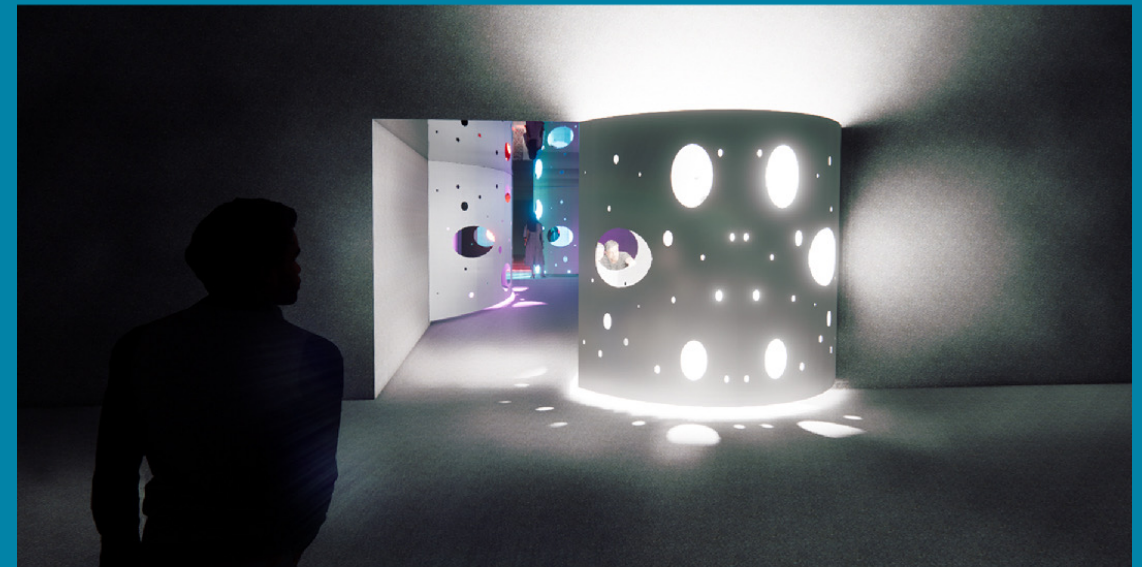
Enter the Dragonfly envisions the ecological restoration and transformation of Waller Creek as a healthy habitat for a diversity of native life. Dragonflies are one of the oldest and most reliable indicator species of a thriving and stable aquatic ecosystem.



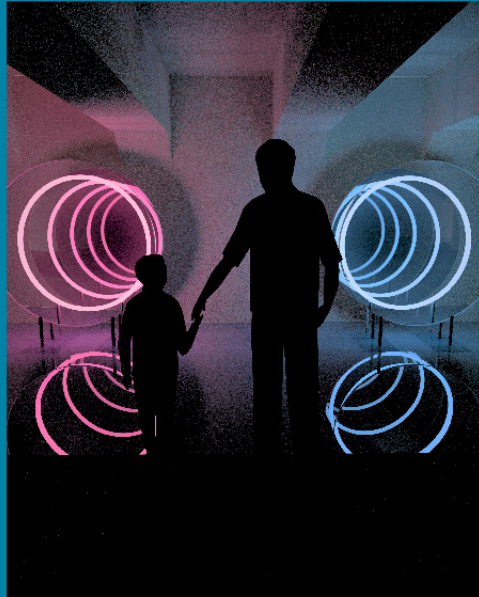
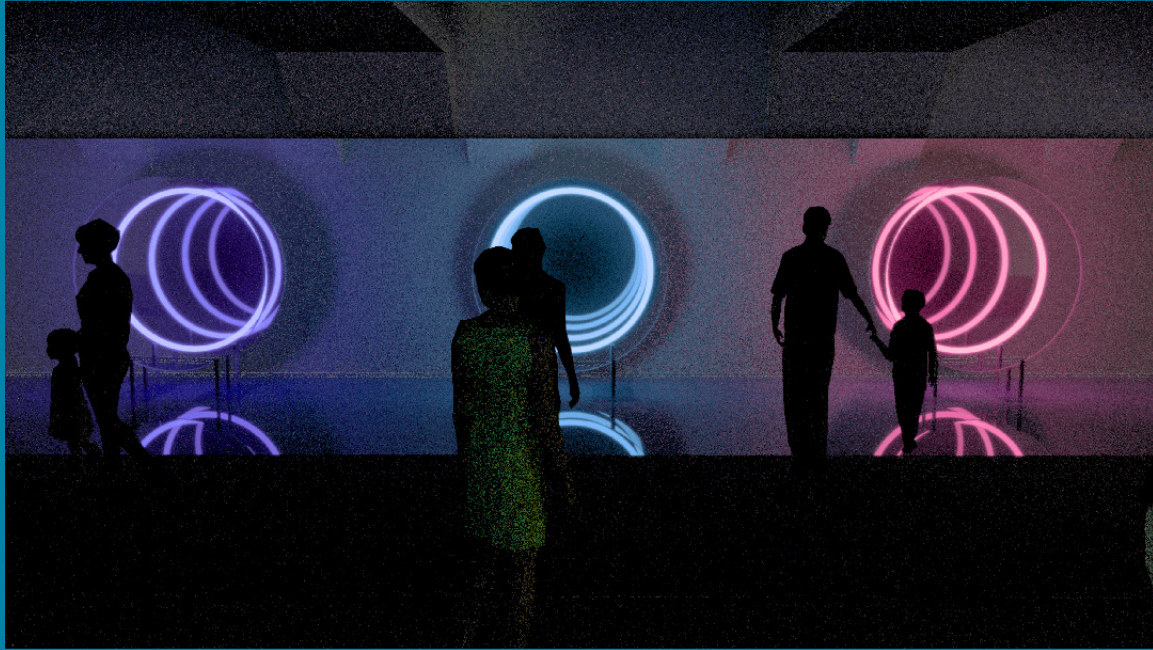
Enter the Dragonfly consists of larger-than-life metal dragonflies hovering above the creek waters, their reflections glowing beneath them. Using scale and light, the sculptures visually bring attention to the critical relationship between urban and natural environments while inspiring curiosity, excitement, and thoughtful engagement from the viewer with Waterloo Greenway's mission.



A hypothetical structure or tunnel that connects two points separated in space and time. Similarly, this installation seeks to connect users through imagery and visual anchor points. Nested in illuminated vessels, these moments overtake the structure of the bridge through an organic form and invite user interaction. In its highest form, the goal of the intervention is to encourage users through the tunnel – providing opportunities for lingering self-reflection in the pursuit of connectivity and aesthetic enjoyment.







The dance between the moon and Earth's bodies of water is one as old as time itself. From influencing tides along our seacoasts, to regulating precipitation feeding our inland rivers, invisible forces are at work right before our eyes. LUNA seeks to illuminate the invisible bonds between our environment and each other. With its mirrored materiality, the installation serves as a symbol for diversity and equity, while encouraging reflection on the idea that we all contribute to the future of our urban fabric. The infinity effect of the lights and the mirror creates a place for everyone and alludes to the endless possibilities we all represent to our city of Austin.



Joseph Jones, late UT Professor and champion of Waller Creek, would spend his lunch hour walking the creek where it passed through campus, keeping an “inventory” of things seen and found – flora and fauna, along with beer cups and plastic bags – acknowledging the signs of human presence amidst the abundant natural beauty. For our installation, we are channeling our inner Joseph Jones and collecting hundreds of used plastic bottles directly from the creek and from other local sources, coating the inside with luminescent paint, and arranging them geometrically just above the surface of the water. We will then shine UV light across the tops to transform them into a field of glowing objects - a bright “inventory” of trash – highlighting the human contribution to the story of this wonderful “cretaceous limestone gutter.”

 **INVENTORIES**  
LAWRENCE GROUP







GOOD~VIBRATIONS is a celebration of the hidden landscapes that run beneath our feet and continue to shape our urban environment by bringing them to the surface. Inspired by stalagmite and stalactite formations within caves, this installation drips and oozes over Waller Creek to recreate a cavernous experience. Forms are covered with mirror pieces and spotlighted to scatter light in the spirit of a disco, set to the echoing sounds of dripping water and chirping bats (with some remixes in-between). We encourage attendees to celebrate subterranean landscapes with GOOD~VIBRATIONS by immersing themselves in an experience that employs lighting and sound to highlight rich interactions and the dance of life's organisms.

**GOOD~VIBRATIONS**  
STUDIO 5-1-2





Tunnel Vision! is inspired by the massive 24' diameter underground concrete Waller Creek Tunnel that runs from Waterloo Park to Lady Bird Lake. A series of concentric lighted rings focuses the viewer on the dome of the state Capitol, with an interactive light show.



**V TUNNEL VISION!**  
HUGH JEFFERSON RANDOLPH ARCHITECTS



# BEYOND THE LIGHT



## CREEK SHOW PERFORMANCES

- Texas National Guard 36th Infantry Division Band Veterans Day Celebration
- Chief Cleopatra presented in partnership with Six Square
- San Gabriel presented in partnership with HAAM
- Creek Show Artist Talk presented in partnership with AIA Austin
- ATX Drag Queen Showcase
- Big Wy Brass Band
- J.R Gomez y Los Conjunto Bandits
- Nightly Featured DJs

## CREEK SHOW FAMILY ZONE

- Hands-On STEM workshops & games
- Community & Cultural Nonprofits
- Exclusive Creek Show merchandise

## CREEK SHOW LOUNGE

- Creek Show Photo Booth
- Learn about Waterloo Greenway Conservancy
- Waterloo Greenway Membership Sign Up

## Creek Show Cocktail Lounge

- Featured Cocktail Bar on the Tito's Terrace







**CREEK SHOW**<sup>20</sup><sub>22</sub>

# CREEK SHOW PREVIEW NIGHT

**THURSDAY, NOVEMBER 10 | 7:00 PM – 10:00 PM**

The Creek Show Preview Night offers Austinites advanced access to Creek Show and an exclusive first-look at this year's luminescent art.

The evening will also include a special performance from Austin's Grammy-winning, funk-infused, cumbia orchestra Grupo Fantasma at the Moody Amphitheater.

This ticketed event raises important funds that help Waterloo Greenway Conservancy continue to provide free programming for the entire community.

Tickets On-Sale: October 19, 2022 | \$25



# *The Way of Water*

presented in partnership with Forklift Danceworks & Austin Watershed Protection



*The Way of Water* is a multi-year performance project that expands civic participation and conversation through dance. The project explores the histories, challenges, and futures of water as a shared natural resource. Forklift Danceworks brings its community-based practice to partnerships with essential civic workers, artists and local residents in Austin, Miami, Venice, Italy and beyond. These stories reveal the way water moves.

The project's premiere performance features the City of Austin Watershed Protection Department. Presented in partnership with Waterloo Greenway, live original music and lighting design will accompany the movement and stories of Austin's Watershed Protection employees. Subsequent years of the project will entail collaboration with neighborhoods in other watersheds across the city.





**CREEK SHOW**<sup>20</sup><sub>22</sub>

**NOVEMBER 11-20 • CREEKSHOW.COM**