

PROPOSAL PREPARED FOR:



TEXAS REGIONAL BANK

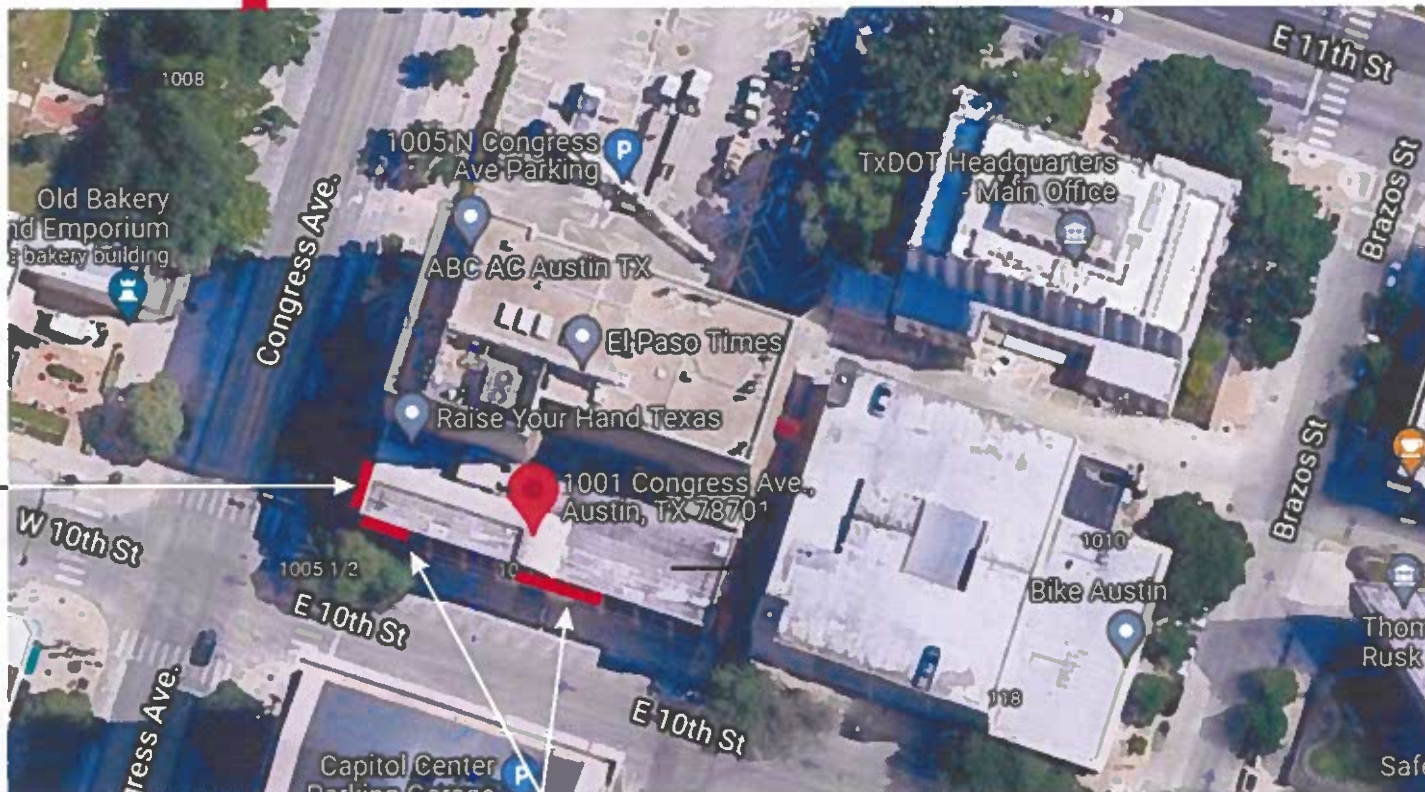
The people you know.™

1001 Congress Ave. Austin, Tx. 78701

PREPARED BY:



LOCATION



SOUTH FRONT ELEVATION

PROJECT



TEXAS REGIONAL BANK
The people you know.™

1001 Congress Ave. Austin, Tx. 78701

REVISIONS

- 1 7/22/22
- 2 8/3/22
- 3 8/12/22
- 4 8/23/22

SCOPE OF WORK

MFR/INSTALL:

(2) NEW SET OF INTERNALLY ILLUMINATED FACE LIT CHANNEL LOGOS AND LETTERS FLUSH MOUNTED ON BUILDING FASCIA.

MFR/INSTALL:

(1) NEW SET OF INTERNALLY ILLUMINATED FACE LIT CHANNEL LOGO AND LETTERS FLUSH MOUNTED TO BACK PANEL FLUSH MOUNT TO BUILDING FASCIA.

Pantone® 2955
CMYK 100/55/10/48
RGB 0/60/105
HEX 003C69
3M 3630-157
SULTAN BLUE
TRANSLUCENT VINYL

Digital Print
Pantone® 8006
CMYK 39/48/66/13
RGB 148/120/91
HEX 94785b
BRUSHED GOLD
TRANSLUCENT VINYL

Pantone® 8006
CMYK 39/48/66/13
RGB 148/120/91
HEX 94785b
3M 3630-141
GOLD NUGGET
TRANSLUCENT VINYL

PAGE 2 of 9

Address: 1001 Congress Ave. Austin, Tx. 78701

Changes:

Revision Number: R4

File Locaton: Jesse/Art01C/Drive?Jobs/TexasRegional Bank/AustinTx.

Date: 7-19-22

Scale: NTS

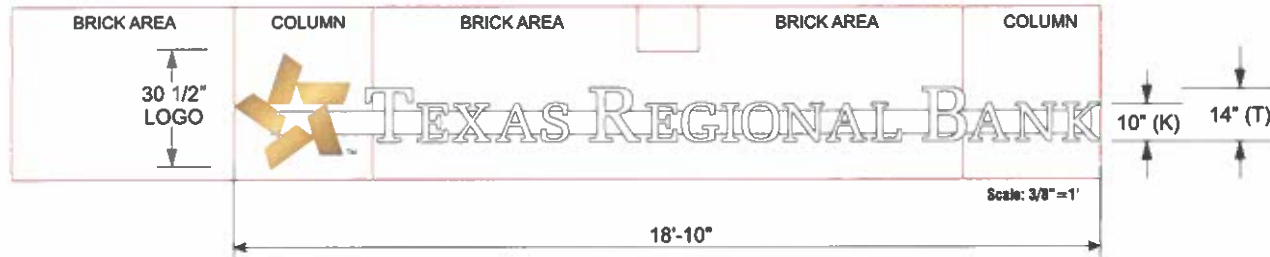
Artist: Jesse

This original unpublished drawing is the property of Sign Crafters, Inc. and is submitted for personal use only in conjunction with the planning of the expressed project. This drawing is not to be reproduced, used or exhibited in any fashion without permission from Sign Crafters, Inc. Unauthorized use constitutes customer approval of all associated creative, drafting and engineering fees. This representation is for illustrative purposes only and may not accurately reflect actual size or specifications. Sign Crafters, Inc. shall not be held responsible or liable for any discrepancy whatsoever between the illustration and the actual signage itself.

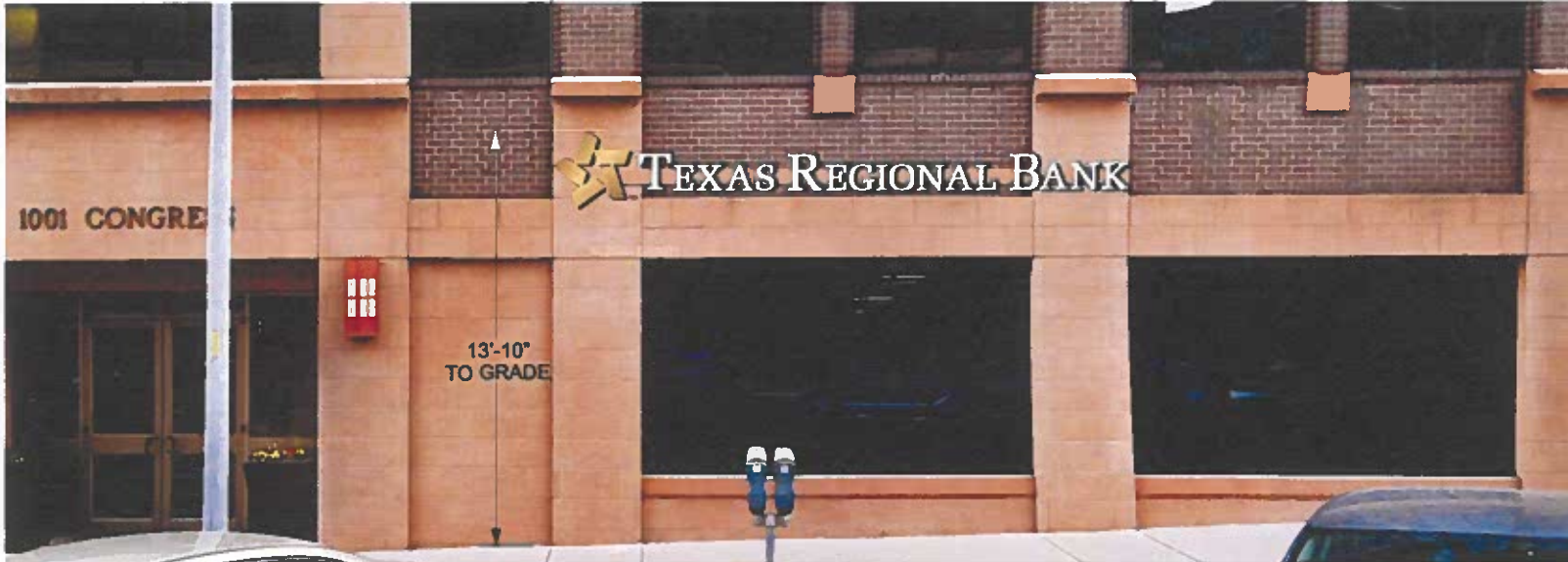
Sign Crafters, Inc.
2401 I-35 S. San Marcos, TX 78666
512-392-0900 FX: 512-392-3363
info@signcrafters.net
www.signcrafters.net



SOUTH FRONT ELEVATION CHANNEL LETTERS ON WIREWAY



DAY VIEW



PROPOSE NEW SET OF CHANNEL LETTERS

Scale: 1/4"=1'

PROJECT



TEXAS REGIONAL BANK

The people you know.™

1001 Congress Ave. Austin, Tx. 78701

REVISIONS

- 1 7/22/22
- 2 8/3/22
- 3 8/12/22
- 4 8/23/22

SCOPE OF WORK

MFR/INSTALL:
(1) NEW SET OF INTERNALLY
ILLUMINATED FACE LIT CHANNEL
LOGO AND LETTERS
FLUSH MOUNTED ON ALUM.
WIREWAY

LOGO FACE WHITE ACRYLIC
FACES W/DIGITAL PRINT
BRUSHED GOLD ON CLEAR FILM
W/CLEAR OVER LAMINATE
APPLIED 1ST SURFACE
1" GOLD TRIMCAP
5" ALUM. RETURNS PTM
PMS 8006 GOLD NUGGET
.063 ALUM. BACKS INSIDE
BRIGHT WHITE

LETTER FACES WHITE ACRYLIC
1" WHITE TRIM CAPS
5" WHITE RETURNS
.063 ALUM. BACKS INSIDE
BRIGHT WHITE

.125 ALUM. WIREWAY
PAINT COLOR TBD

- Digital Print PMS 8006
BRUSHED GOLD
TRANSLUCENT VINYL
- Pantone® 8006 GOLD NUGGET

PAGE 8 of 9

Address: 1001 Congress Ave. Austin, Tx. 78701

Changes:

Revision Number:R4

File Locaton: Jesse/Art01CDrive?Jobs/TexasRegional Bank/AustinTx.

Date: 7-19-22

Scale: Noted

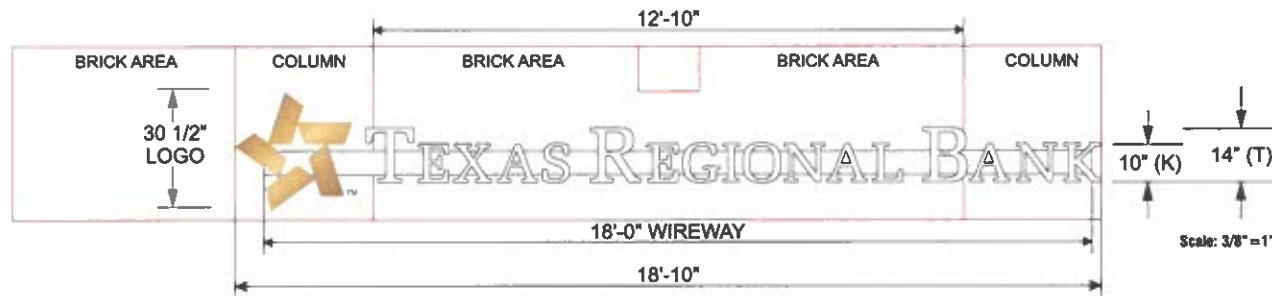
Artist: Jesse

This original unpublished drawing is the property of Sign Crafters, Inc. and is submitted for personal use only in conjunction with the planning of the expressed project. This drawing is not to be reproduced, used or exhibited in any fashion without permission from Sign Crafters, Inc. Unauthorized use constitutes customer approval of all associated creative, drafting and engineering fees. This representation is for illustrative purposes only and may not accurately reflect actual size or specifications. Sign Crafters, Inc. shall not be held responsible or liable for any discrepancy whatsoever between the illustration and the actual signage itself.

Sign Crafters, Inc.
2401 I-35 S. San Marcos, TX 78666
512-392-0900 FX:512-392-3363
info@signcrafters.net
www.signcrafters.net

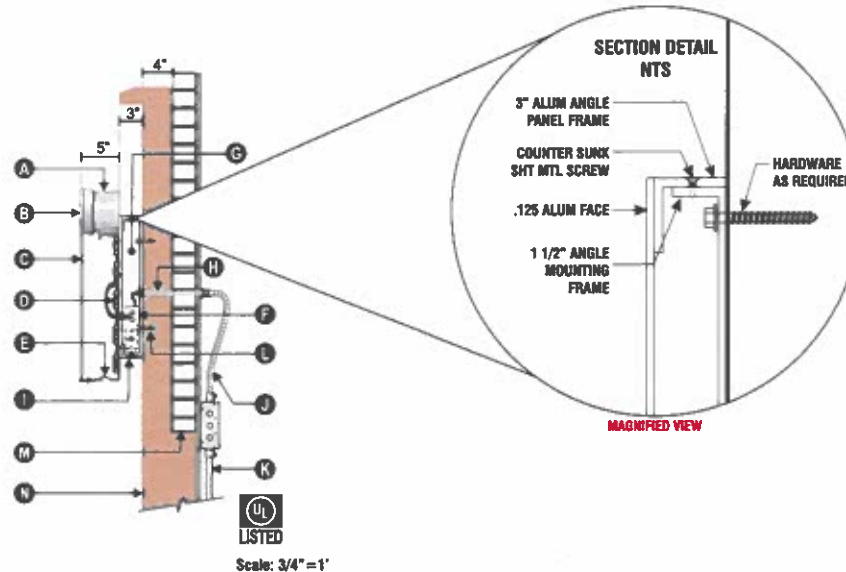


SOUTH FRONT ELEVATION CHANNEL LETTERS ON WIREWAY



DETAIL SECTION - FACE-LIT CHANNEL LETTERS / LOGO

- .040 ALUM. WHITE RETURNS (A)
- 1" TRIM CAP (B)
- 3/16" WHITE ACRYLIC FACE (C)
- WHITE LED ILLUMINATED (D)
- WEEP HOLES (E)
- LED POWER SUPPLY (F)
- 3" X 6" X 18'-0" ALUM. WIREWAY (G)
- WALL BUSTER PAS-THRU (H)
- LISTED DISCONNECT SWITCH (I)
- ALUM. FLEX CONDUIT (J)
- PRIMARY ELECTRIC (K)
- NON-CORROSIVE EXPANSION LAG SHIELD BOLT (L)
- BRICK FASCIA (M)
- EXISTING COLUMN (N)



PROJECT



TEXAS REGIONAL BANK
The people you know.™

1001 Congress Ave. Austin, Tx. 78701

REVISIONS

- 1 7/22/22
- 2 8/3/22
- 3 8/12/22
- 4 8/23/22

SCOPE OF WORK

MFR/INSTALL:
(1) NEW SET OF INTERNALLY ILLUMINATED FACE LIT CHANNEL LOGO AND LETTERS FLUSH MOUNTED ON ALUM. WIREWAY

LOGO FACE WHITE ACRYLIC
FACES W/DIGITAL PRINT
BRUSHED GOLD ON CLEAR FILM
W/CLEAR OVER LAMINATE
APPLIED 1ST SURFACE
1" GOLD TRIMCAP
5" ALUM. RETURNS PTM
PMS 8006 GOLD NUGGET
.063 ALUM. BACKS INSIDE
BRIGHT WHITE

LETTER FACES WHITE ACRYLIC
1" WHITE TRIM CAPS
5" WHITE RETURNS
.063 ALUM. BACKS INSIDE
BRIGHT WHITE

.125 ALUM. WIREWAY
PAINT COLOR TBD

Digital Print PMS 8006
BRUSHED GOLD
TRANSLUCENT VINYL
 Pantone® 8006 GOLD NUGGET

Address: 1001 Congress Ave. Austin, Tx. 78701

Changes:

Revision Number:R4

File Locaton: Jesse/Art01CDrive?Jobs/TexasRegional Bank/AustinTx.

Date: 7-19-22

Scale: Noted

Artist: Jesse

This original unpublished drawing is the property of Sign Crafters, Inc. and is submitted for personal use only in conjunction with the planning of the expressed project. This drawing is not to be reproduced, used or exhibited in any fashion without permission from Sign Crafters, Inc. Unauthorized use constitutes customer approval of all associated creative, drafting and engineering fees. This representation is for illustrative purposes only and may not accurately reflect actual size or specifications. Sign Crafters, Inc. shall not be held responsible or liable for any discrepancy whatsoever between the illustration and the actual signage itself.

Sign Crafters, Inc.
2401 I-35 S. San Marcos, TX 78666
512-392-0900 FX:512-392-3363
info@signcrafters.net
www.signcrafters.net



LOCATION



WEST SIDE
ELEVATION

SOUTH FRONT ELEVATION

PROJECT



TEXAS REGIONAL BANK

The people you know.™

1001 Congress Ave. Austin, Tx. 78701

REVISIONS

- 1 7/22/22
- 2 8/3/22
- 3 8/12/22
- 4 8/23/22

SCOPE OF WORK

MFR/INSTALL:

(2) NEW SET OF INTERNALLY ILLUMINATED FACE LIT CHANNEL LOGOS AND LETTERS FLUSH MOUNTED ON BUILDING FASCIA.

MFR/INSTALL:

(1) NEW SET OF INTERNALLY ILLUMINATED FACE LIT CHANNEL LOGO AND LETTERS FLUSH MOUNT TO BACK PANEL FLUSH MOUNT TO BUILDING FASCIA.

Pantone® 2955
CMYK 100/55/10/48
RGB 0/60/105
HEX 003C69
3M 3630-157
SULTAN BLUE
TRANSLUCENT VINYL

Digital Print
Pantone® 8006
CMYK 39/48/66/13
RGB 148/120/91
HEX 94785b
BRUSHED GOLD
TRANSLUCENT VINYL

Pantone® 8006
CMYK 39/48/66/13
RGB 148/120/91
HEX 94785b
3M 3630-141
GOLD NUGGET
TRANSLUCENT VINYL

PAGE 2 of 9

Address: 1001 Congress Ave. Austin, Tx. 78701

Changes:

Revision Number:R4

File Locaton: Jesse/Ar101CDrive?Jobs/TexasRegional Bank/AustinTx.

Date: 7-19-22

Scale: NTS

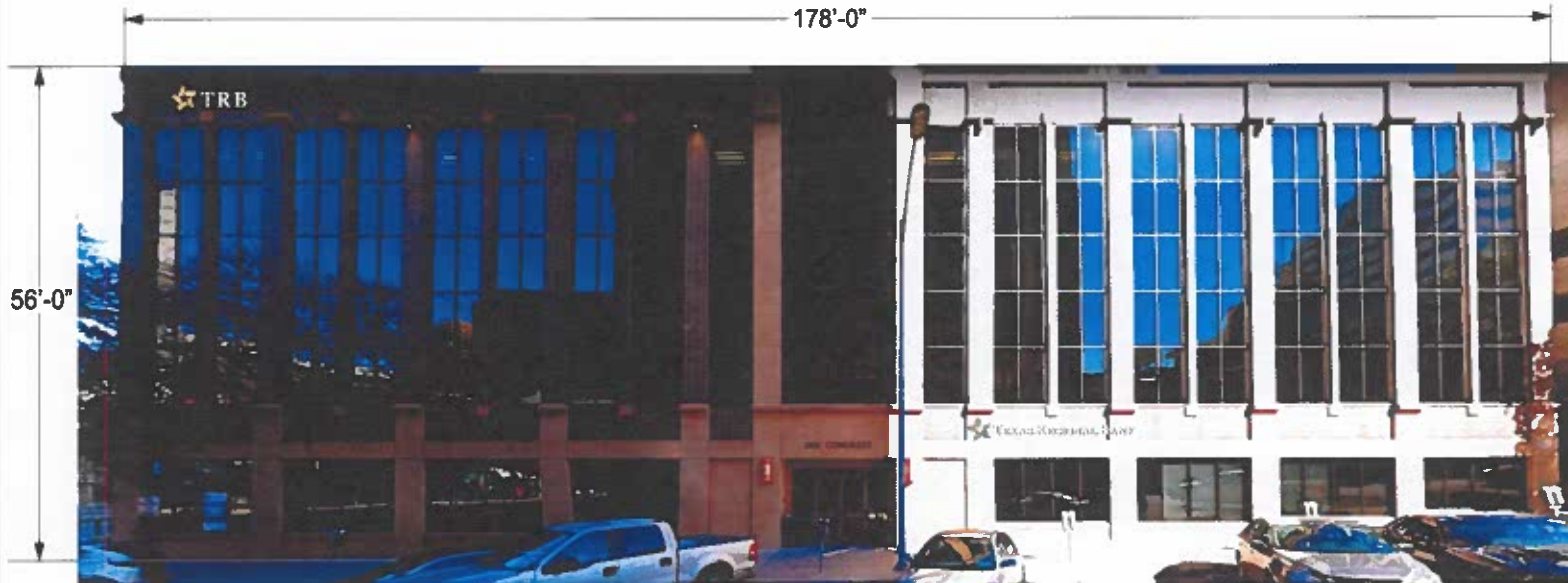
Artist: Jesse

This original unpublished drawing is the property of Sign Crafters, Inc. and is submitted for personal use only in conjunction with the planning of the expressed project. This drawing is not to be reproduced, used or exhibited in any fashion without permission from Sign Crafters, Inc. Unauthorized use constitutes customer approval of all associated creative, drafting and engineering fees. This representation is for illustrative purposes only and may not accurately reflect actual size or specifications. Sign Crafters, Inc. shall not be held responsible or liable for any discrepancy whatsoever between the illustration and the actual signage itself.

Sign Crafters, Inc.
2401 I-35 S. San Marcos, TX 78666
512-392-0900 FX:512-392-3363
info@signcrafters.net
www.signcrafters.net



SOUTH FRONT ELEVATION



PROPOSE NEW SET OF CHANNEL LETTERS

PROJECT



TEXAS REGIONAL BANK

The people you know.™

1001 Congress Ave. Austin, Tx. 78701

REVISIONS

1	7/22/22
2	8/3/22
3	8/12/22
4	8/23/22

PAGE 5 of 9

Address: 1001 Congress Ave. Austin, Tx. 78701

Changes:

Revision Number:R4

File Locaton: Jesse/Art01CDrive?Jobs/TexasRegional Bank/AustinTx.

Date: 7-19-22

Scale: NTS

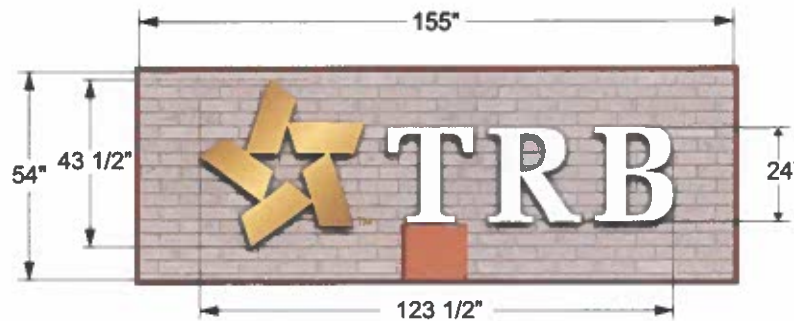
Artist: Jesse

This original unpublished drawing is the property of Sign Crafters, Inc. and is submitted for personal use only in conjunction with the planning of the expressed project. This drawing is not to be reproduced, used or exhibited in any fashion without permission from Sign Crafters, Inc. Unauthorized use constitutes customer approval of all associated creative, drafting and engineering fees. This representation is for illustrative purposes only and may not accurately reflect actual size or specifications. Sign Crafters, Inc. shall not be held responsible or liable for any discrepancy whatsoever between the illustration and the actual signage itself.

Sign Crafters, Inc.
2401 I-35 S. San Marcos, TX 78666
512-392-0900 FX:512-392-3363
info@signcrafters.net
www.signcrafters.net



WEST & SOUTH SIDE ELEVATIONS



PROJECT



TEXAS REGIONAL BANK

The people you know.™

1001 Congress Ave. Austin, Tx. 78701

REVISIONS

- 1 7/22/22
- 2 8/3/22
- 3 8/12/22
- 4 8/23/22

SCOPE OF WORK

MFR/INSTALL:
(2) NEW SET OF INTERNALLY ILLUMINATED FACE LIT CHANNEL LOGOS AND LETTERS FLUSH MOUNTED ON BUILDING FASCIA.

LOGO FACES TO HAVE WHITE ACRYLIC W/DIGITAL PRINTED BRUSH GOLD ON CLEAR FILM W/CLEAR OVERLAMINATE APPLIED 1ST SURFACE .040 ALUM. RETURNS AND 2" TRIM CAP TO MATCH PMS 8006 GOLD

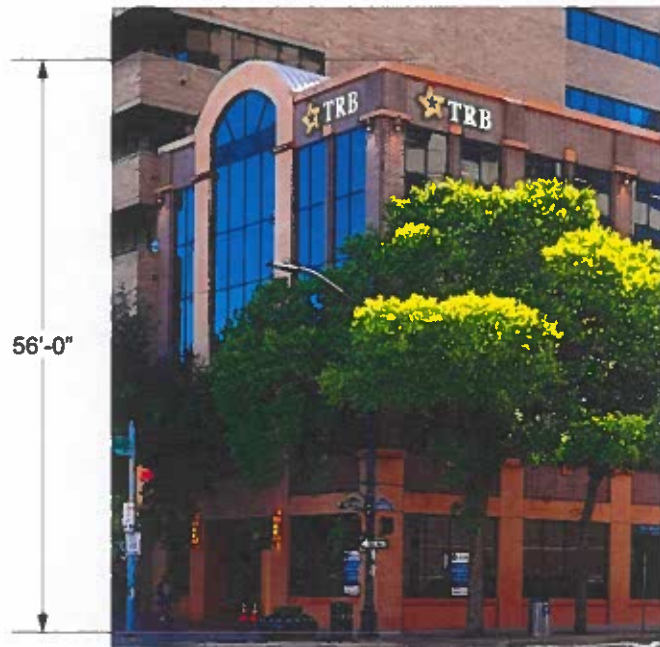
LETTER FACES TO HAVE WHITE ACRYLIC, TRIM CAPS, AND RETURNS TO BE WHITE



Digital Print
Pantone® 8006
CMYK 39/48/6613
RGB 148/120/91
HEX 94785b
BRUSHED GOLD
TRANSLUCENT VINYL



Pantone® 8006
CMYK 39/48/6613
RGB 148/120/91
HEX 94785b
3M 3630-141
GOLD NUGGET
TRANSLUCENT VINYL



PROPOSE NEW SET OF REVERSE LIT CHANNEL LETTERS



EXISTING CONDITIONS

NIGHT VIEW

PAGE 3 of 9

Address: 1001 Congress Ave. Austin, Tx. 78701

Changes:

Revision Number:R4

File Locaton: Jesse/Art01CDrive?Jobs/TexasRegional Bank/AustinTx.

Date: 7-19-22

Scale: 3/8" = 1'

Artist: Jesse

This original unpublished drawing is the property of Sign Crafters, Inc. and is submitted for personal use only in conjunction with the planning of the expressed project. This drawing is not to be reproduced, used or exhibited in any fashion without permission from Sign Crafters, Inc. Unauthorized use constitutes customer approval of all associated creative, drafting and engineering fees. This representation is for illustrative purposes only and may not accurately reflect actual size or specifications. Sign Crafters, Inc. shall not be held responsible or liable for any discrepancy whatsoever between the illustration and the actual signage itself.

Sign Crafters, Inc.
2401 I-35 S. San Marcos, TX 78666
512-392-0900 FX:512-392-3363
info@signcrafters.net
www.signcrafters.net

