



Kilroy Post Office - Indeed Tower

City of Austin

Historic Review Application

Table of Contents

SITE LOCATION MAP

HISTORIC DISTRICT MAP

INDEX OF KEY PLANS

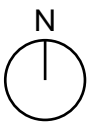
- Basement Floor Plan
- First Floor Plan
- Second Floor Plan
- Attic Floor Plan
- Roof Plan

INDEX OF PHOTOGRAPHS

- | | |
|----------------|----------|
| - Historic | H1 to H5 |
| - Exterior | E1 to E6 |
| - Interior | |
| - Basement | B1-B2 |
| - First Floor | F1 to F9 |
| - Second Floor | S1 to S2 |
| - Attic Floor | A1 |
| - Roof Floor | R1 to R3 |

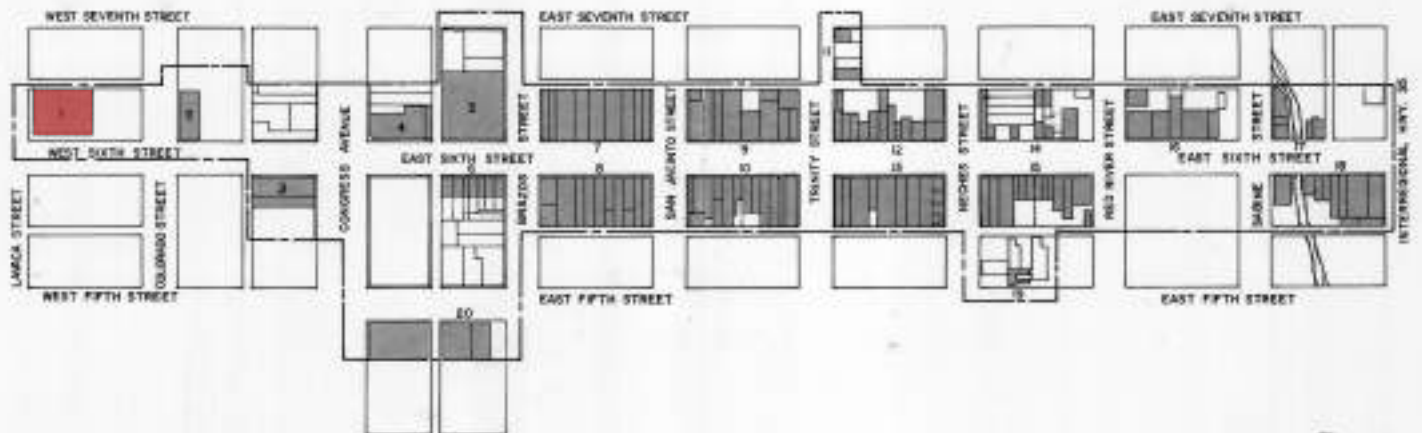


Kilroy Post Office - Indeed Tower
Sixth Street Historic District
Austin, TX

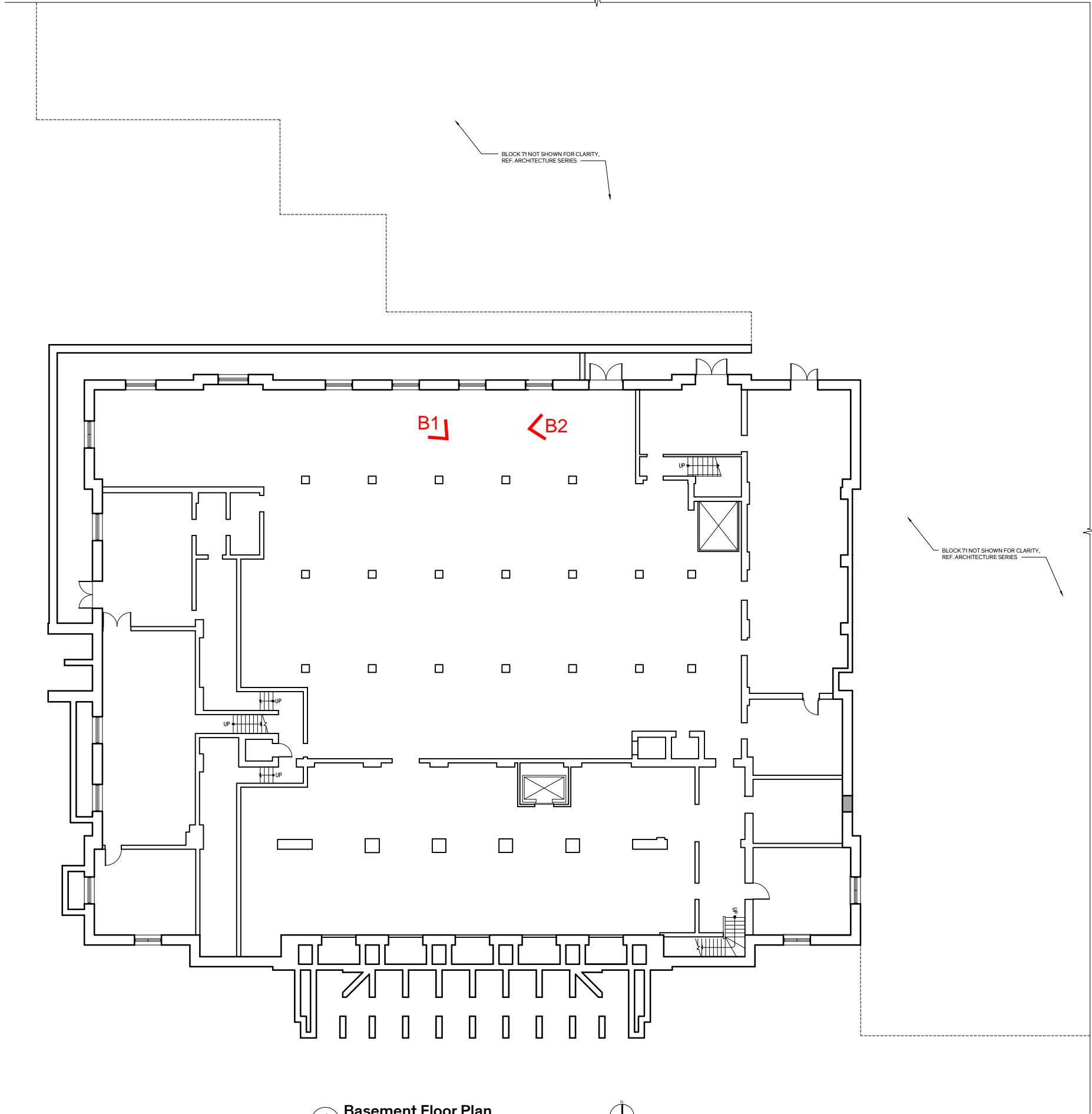


SIXTH STREET HISTORIC DISTRICT AUSTIN, TEXAS

NO SCALE



Kilroy Post Office - Indeed Tower
Sixth Street Historic District Boundary from National
Register Nomination
Austin, TX



1 Basement Floor Plan
Scale: 1/8" = 1'-0"



E3

E4

H2

F4

E5

H4

F7

H5

OPEN TO FLOOR ABOVE

F6

F3

F5

F2

F9

F8

H3

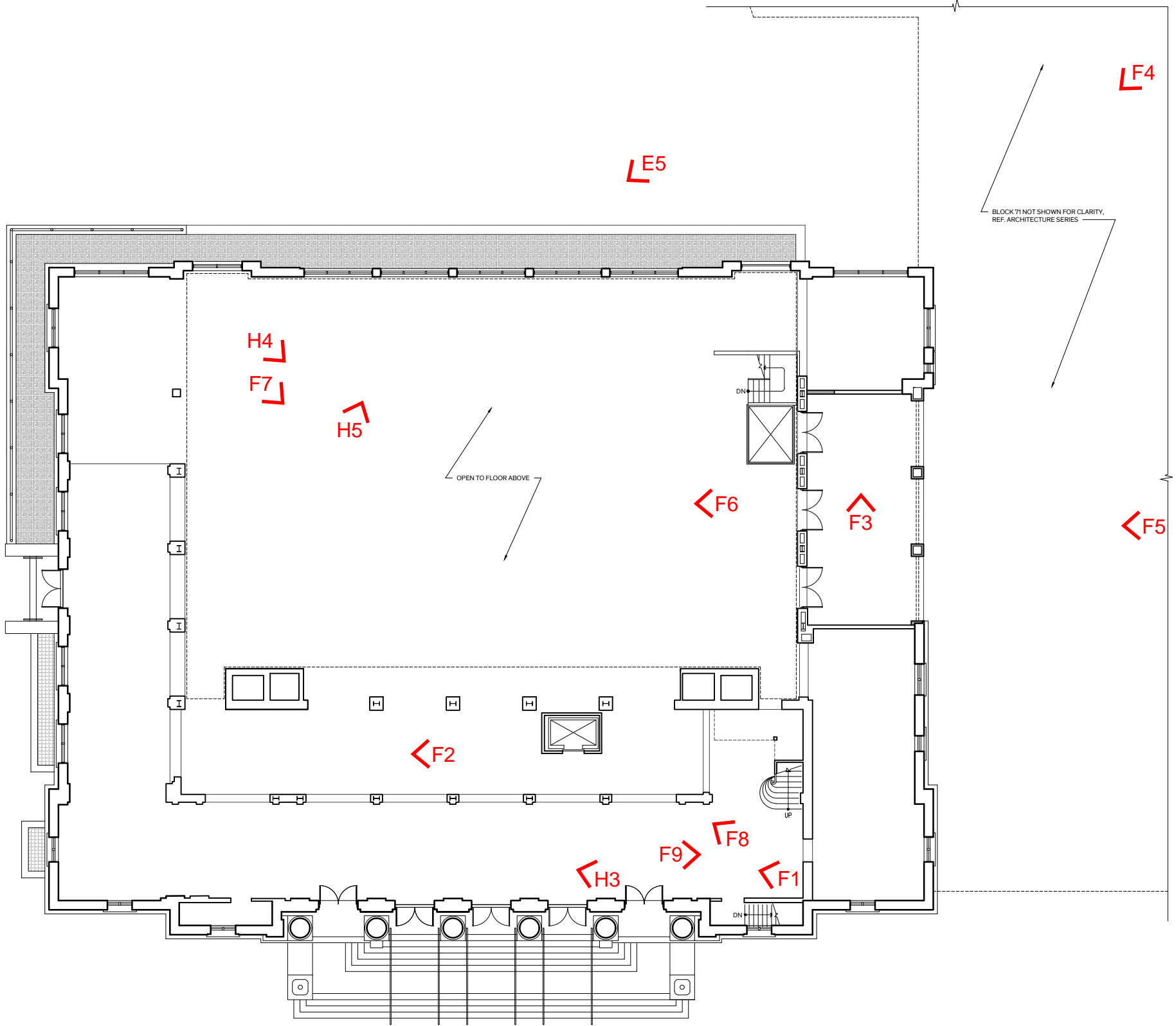
F1

E2

E1

H1

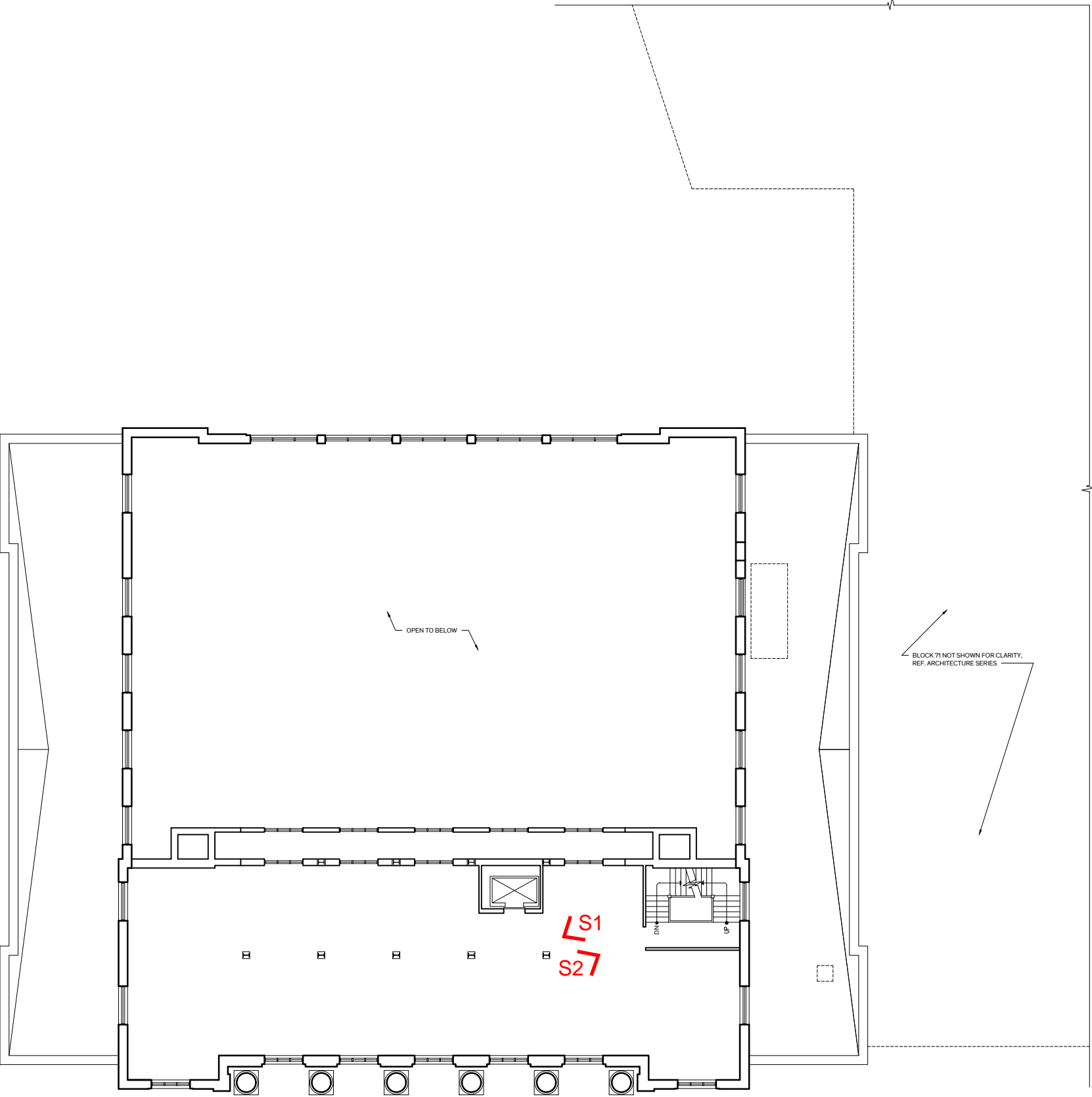
E6



BLOCK 71 NOT SHOWN FOR CLARITY,
REF. ARCHITECTURE SERIES

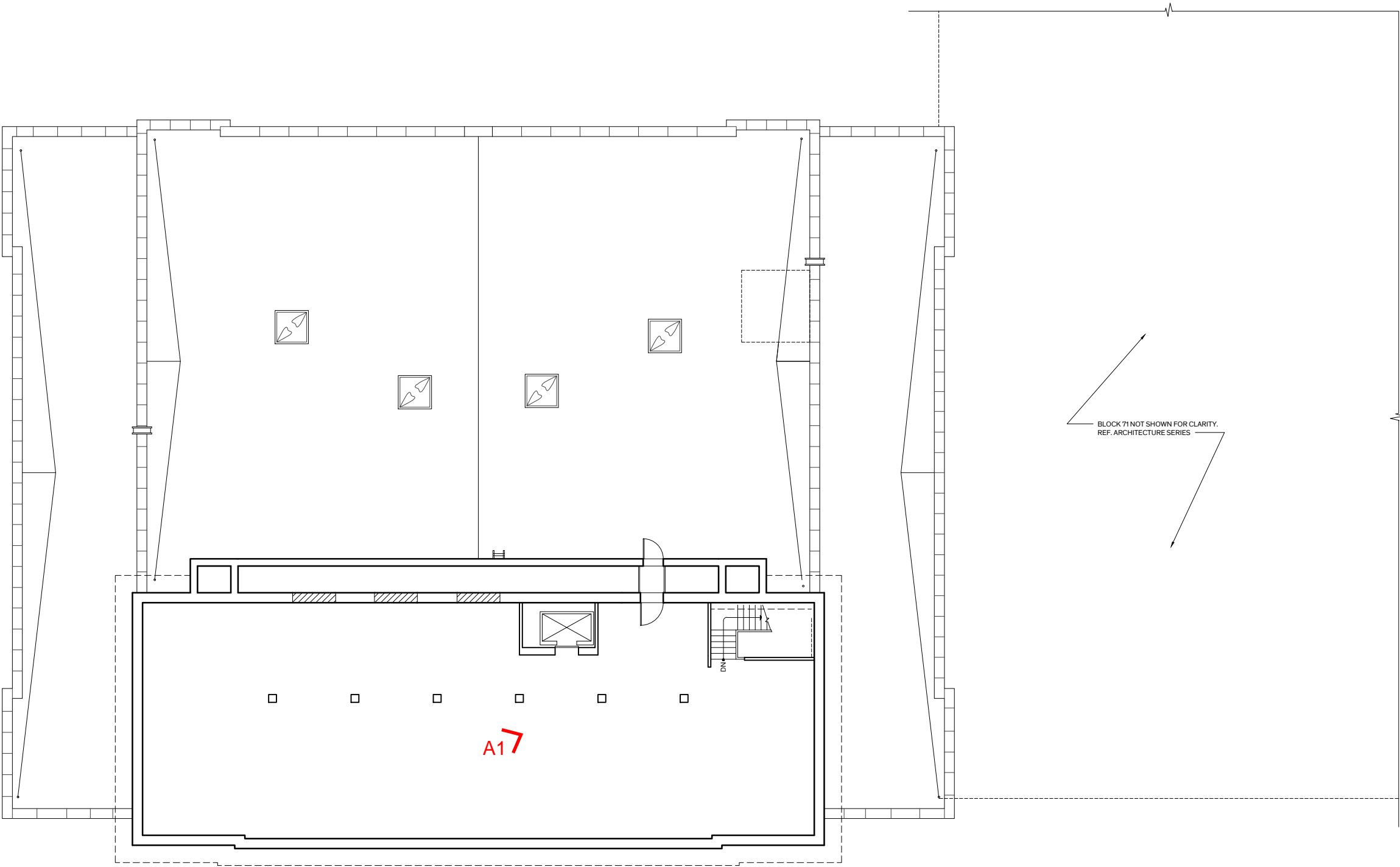
1 First Floor Plan
Scale: 1/8" = 1'-0"





1 Second Floor Plan
Scale: 1/8" = 1'-0"



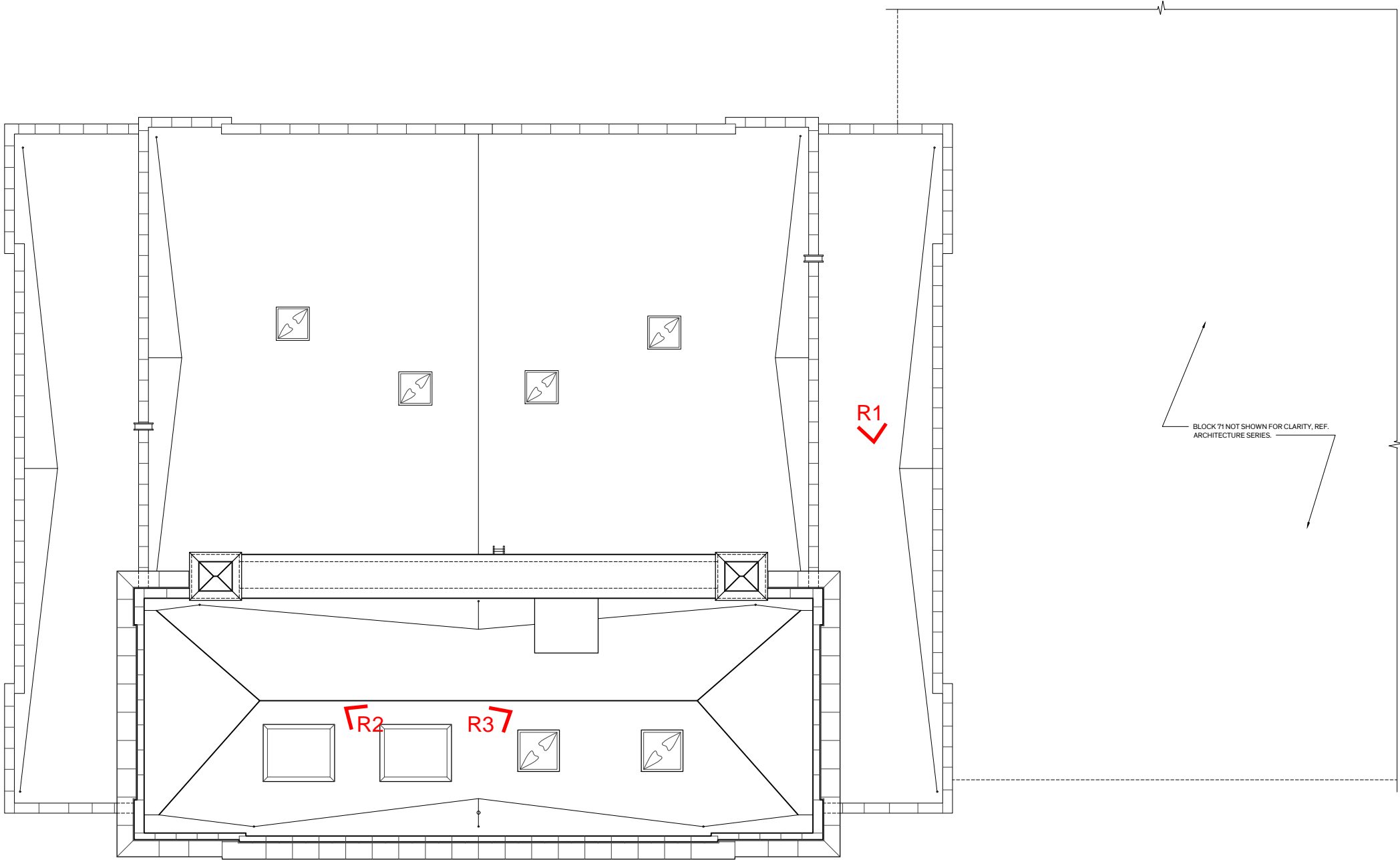


1

Attic Floor Plan

Scale: 1/8" = 1'-0"





1 Roof Plan
Scale: 1/8" = 1'-0"





KILROY POST OFFICE | 1914
H1 | HISTORIC: SOUTH ELEVATION SHORTLY AFTER COMPLETION



KILROY POST OFFICE | 1914
H2 | HISTORIC: NORTH AND WEST ELEVATIONS



KILROY POST OFFICE | 1910s
H3 | HISTORIC: VIEW OF LOBBY DURING CONSTRUCTION



KILROY POST OFFICE | 1910s
H4 | HISTORIC: VIEW OF MAIL SORTING ROOM DURING CONSTRUCTION



KILROY POST OFFICE | 1910s
H5 | HISTORIC: VIEW OF STEEL WINDOW AT NORTH FACADE



KILROY POST OFFICE | 2022
E1 | EXTERIOR: SOUTH ELEVATION, INDEED TOWER AT RIGHT



KILROY POST OFFICE | 2022
E2 | EXTERIOR: SOUTH ELEVATION



KILROY POST OFFICE | 2022
E3 | EXTERIOR: AERIAL VIEW OF INDEED TOWER WITH
PLAZA AND KILROY POST OFFICE



KILROY POST OFFICE | 2022
E4 | EXTERIOR: NORTH ELEVATION WITH INDEED TOWER AT LEFT



KILROY POST OFFICE | 2022
E5 | EXTERIOR: NORTH ELEVATION STEEL WINDOWS



KILROY POST OFFICE | 2022
E6 | EXTERIOR: SOUTH ELEVATION, MAIN ENTRY



KILROY POST OFFICE | 2022
B1 | BASEMENT: VIEW OF BASEMENT LEVEL



KILROY POST OFFICE | 2022
B2 | BASEMENT: VIEW OF BASEMENT LEVEL



KILROY POST OFFICE | 2022
F1 | FIRST FLOOR: VIEW OF FORMER POST OFFICE ENTRY LOBBY



KILROY POST OFFICE | 2022
F2 | FIRST FLOOR: VIEW OF FORMER POST OFFICE
WORK SPACE



KILROY POST OFFICE | 2022
F3 | FIRST FLOOR: VIEW OF FORMER OFFICE SPACE



KILROY POST OFFICE | 2022

F4 | FIRST FLOOR: VIEW INSIDE INDEED TOWER LOBBY WITH POST OFFICE IN THE BACKGROUND



KILROY POST OFFICE | 2022

F5 | FIRST FLOOR: VIEW INSIDE INDEED TOWER LOBBY LOOKING AT EAST ELEVATION OF THE POST OFFICE



KILROY POST OFFICE | 2022
F6 | FIRST FLOOR: VIEW OF FORMER MAIL SORTING ROOM



KILROY POST OFFICE | 2022
F7 | FIRST FLOOR: VIEW OF FORMER MAIL SORTING ROOM WITH FORMER MAILING VESTIBULE AND INDEED TOWER LOBBY BEYOND



KILROY POST OFFICE | 2022

F8 | FIRST FLOOR: LOBBY STONE WAINSCOT AND IMITATION CAEN STONE WALLS



KILROY POST OFFICE | 2022

F9 | FIRST FLOOR: LOBBY AND ENTRANCE TO FORMER POST MASTER'S OFFICE



KILROY POST OFFICE | 2022

S1 | SECOND FLOOR: SHELL SPACE AT FORMER OFFICE LOCATIONS, EXISTING ELEVATOR AT RIGHT



KILROY POST OFFICE | 2022

S2 | SECOND FLOOR: STAIR AT NORTHEAST CORNER



KILROY POST OFFICE | 2022
A1 | ATTIC: SHELL SPACE AT ATTIC LEVEL



KILROY POST OFFICE | 2022
R1 | ROOF: VIEW OF ROOF LEVEL WITH INDEED TOWER AT LEFT



KILROY POST OFFICE | 2022

R2 | ROOF: VIEW OF ATTIC ROOF LEVEL WITH AREA TO BE REMOVED FOR LIGHT WELL AT RIGHT, COVERED ATTIC SKYLIGHT VISIBLE AT LEFT



KILROY POST OFFICE | 2022

R3 | ROOF: VIEW OF ATTIC ROOF WITH ELEVATOR OVERRUN AT LEFT, SKYLIGHTS AT RIGHT