



**APPROVED BY**  
**HISTORIC LANDMARK COMMISSION**  
DATE:  
BY: *Steve Sadovsky*  
for HLC Chair

**APPROVED**  
By Angela Gaudette at 3:18 pm, Dec 23, 2019



**APPROVED BY**  
**HISTORIC LANDMARK COMMISSION**  
DATE:  
BY: *Steve Sadousky*  
for HLC Chair

**APPROVED**  
By Angela Gaudette at 3:18 pm, Dec 23, 2019



OAK CREST AVE

SITE PLAN | 1" = 80'

CLAYTON  
& LITTLE

**GREEN PASTURES HOTEL**

811 W. LIVE OAK | AUSTIN, TEXAS 78704

PRELIMINARY - NOT FOR CONSTRUCTION | DECEMBER 11, 2019 | 2 of 17







APPROVED BY  
HISTORIC LANDMARK COMMISSION  
DATE:  
BY: *Steve Sadousky*  
for HLC Chair

APPROVED  
By Angela Gaudette at 3:18 pm, Dec 23, 2019



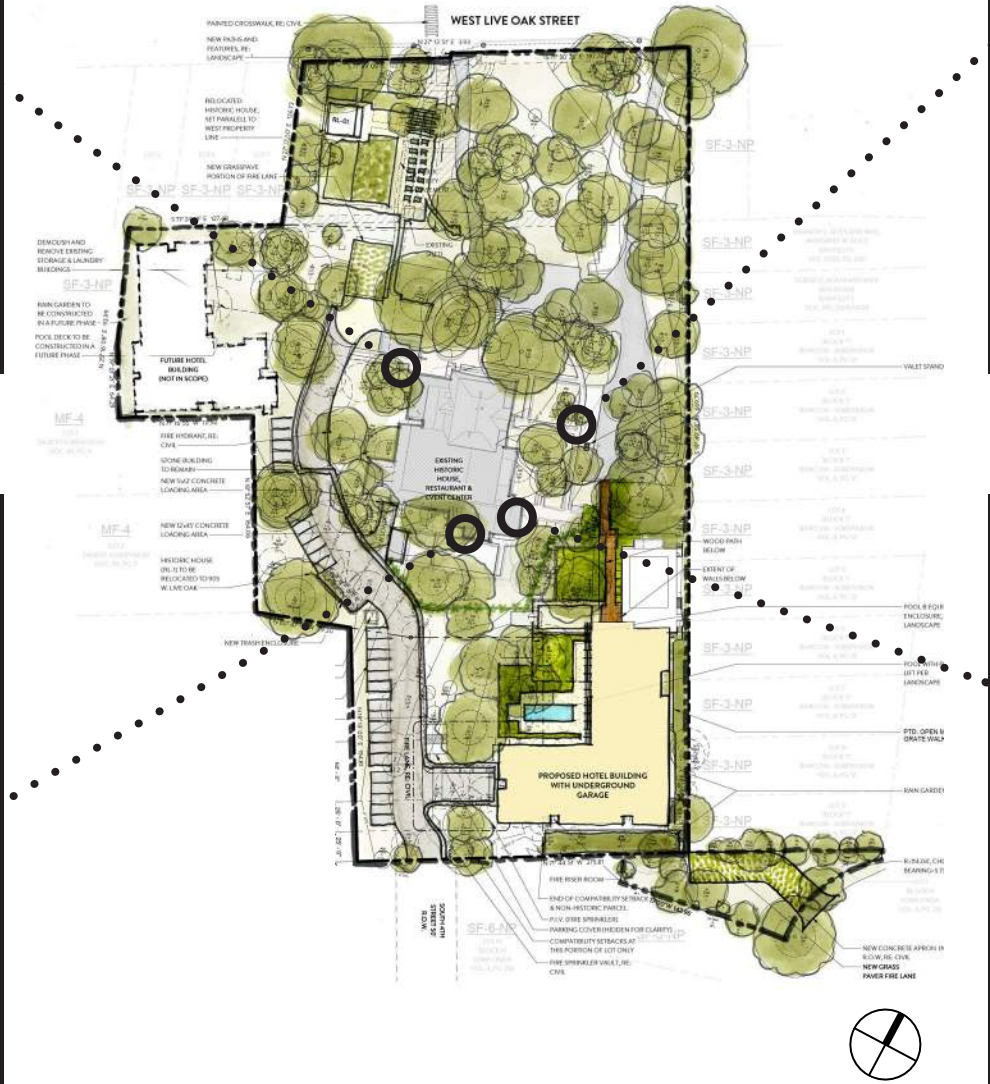
OFFICE & PORCH ADDITION - 2017



MAIN BUILDING EAST FACADE

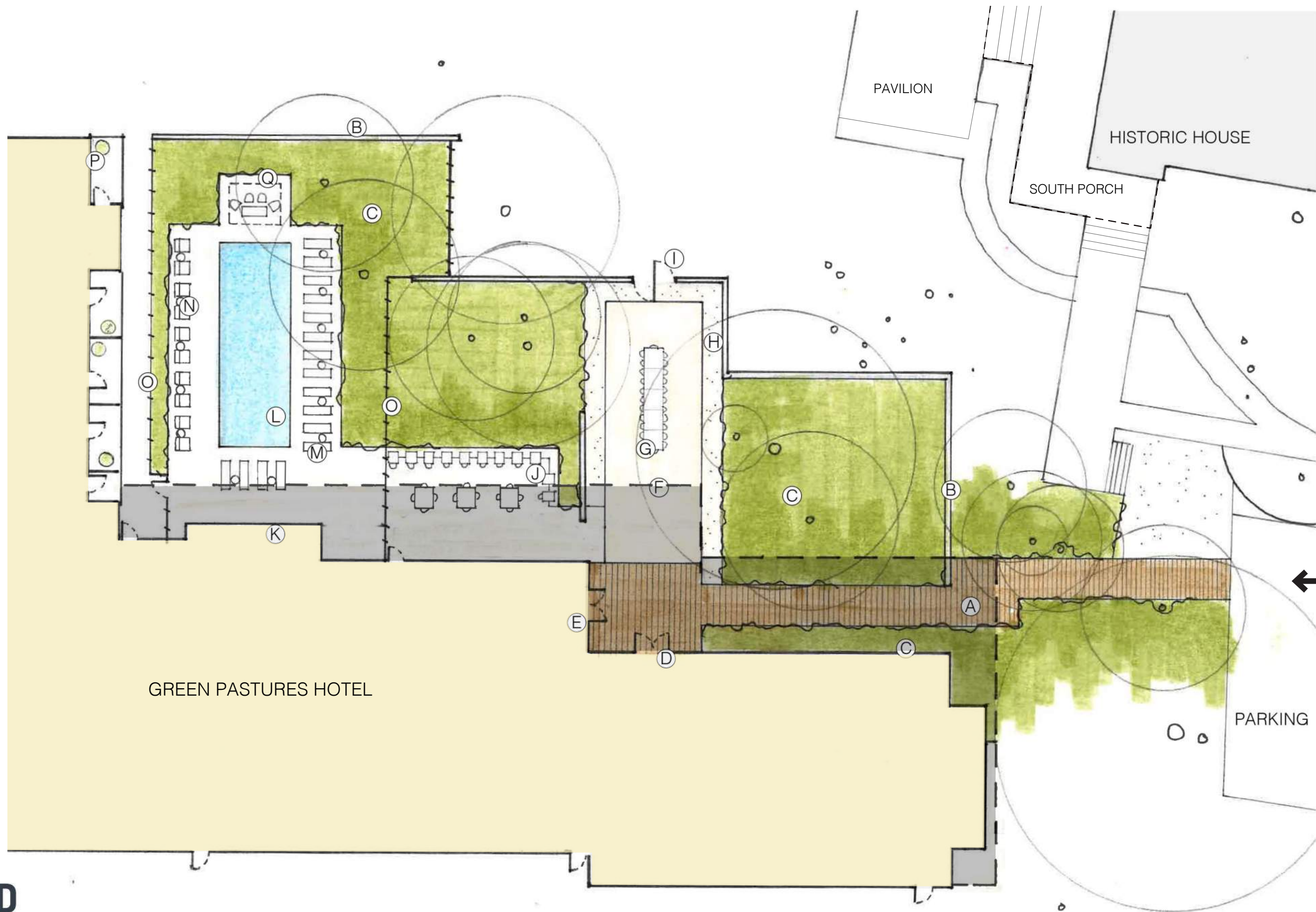


SOUTH PORCH ROOF ADDITION - 2017



SOUTH PORCH & EAST EVENT ENTRY - 2017





- LEGEND**
- A ENTRY BOARDWALK
  - B MASONRY WALL
  - C PLANTING BED
  - D EVENT SPACE ENTRY
  - E HOTEL ENTRY
  - F CARPET OF PAVING
  - G HARVEST TABLE
  - H GRAVEL BAND
  - I ACCESS TO LAWN
  - J BANQUETTE BAR SEATING
  - K HOTEL BAR
  - L POOL (14' X 40')
  - M CHAISE LOUNGE
  - N LOUNGE SEATING
  - O POOL FENCE
  - P POTTED PLANTS
  - Q SHADE STRUCTURE - BY ARCHITECTS

VALET /  
MAIN ENTRANCE

**APPROVED BY**  
**HISTORIC LANDMARK COMMISSION**  
DATE:  
BY: *Steve Sadomsky*  
for HLC Chair

**APPROVED**  
By Angela Gaudette at 3:18 pm, Dec 23, 2019

**WORD  
+ CARR**  
DESIGN GROUP

**CLAYTON  
& LITTLE**



SCALE: 1" = 20'



**APPROVED BY**  
**HISTORIC LANDMARK COMMISSION**  
DATE:  
BY: *Steve Sadousky*  
for HLC Chair

**APPROVED**  
By Angela Gaudette at 3:18 pm, Dec 23, 2019





**APPROVED BY**  
**HISTORIC LANDMARK COMMISSION**  
DATE:  
BY: *Steve Sadousky*  
for HLC Chair

**APPROVED**  
By Angela Gaudette at 3:18 pm, Dec 23, 2019







**APPROVED BY**  
**HISTORIC LANDMARK COMMISSION**  
DATE:  
BY: *Steve Sadousky*  
for HLC Chair

**APPROVED**  
By Angela Gaudette at 3:18 pm, Dec 23, 2019



**APPROVED BY**  
**HISTORIC LANDMARK COMMISSION**  
DATE:  
BY: *Steve Sadousky*  
for HLC Chair

**APPROVED**  
By Angela Gaudette at 3:18 pm, Dec 23, 2019





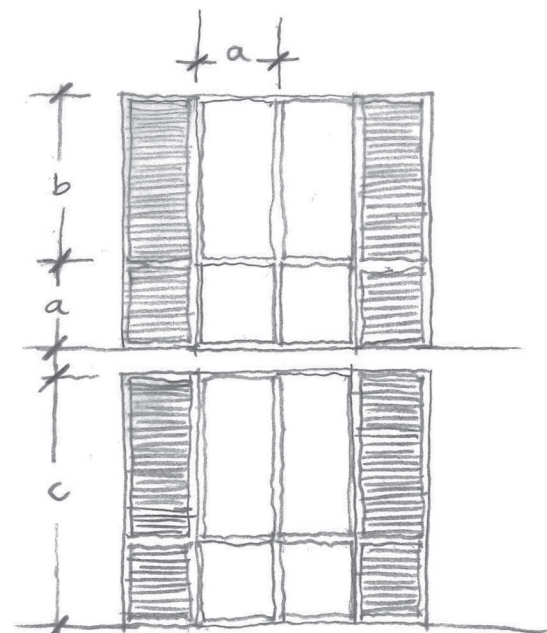
**APPROVED BY**  
**HISTORIC LANDMARK COMMISSION**  
DATE:  
BY: *Steve Sadousky*  
for HLC Chair

**APPROVED**  
By Angela Gaudette at 3:18 pm, Dec 23, 2019

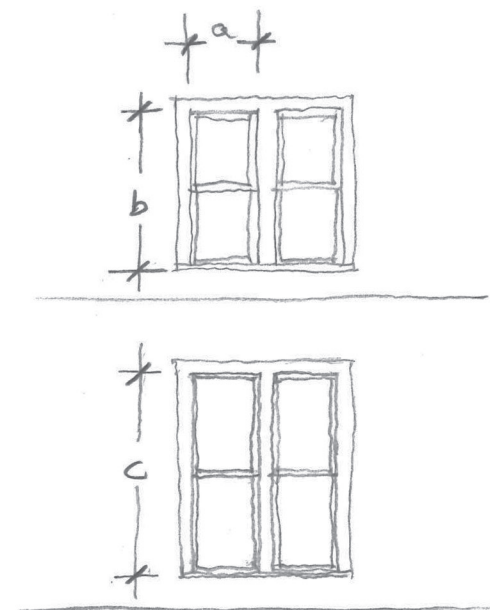


**APPROVED BY**  
**HISTORIC LANDMARK COMMISSION**  
DATE:  
BY: *Steve Sadowsky*  
for HLC Chair

**APPROVED**  
By Angela Gaudette at 3:18 pm, Dec 23, 2019

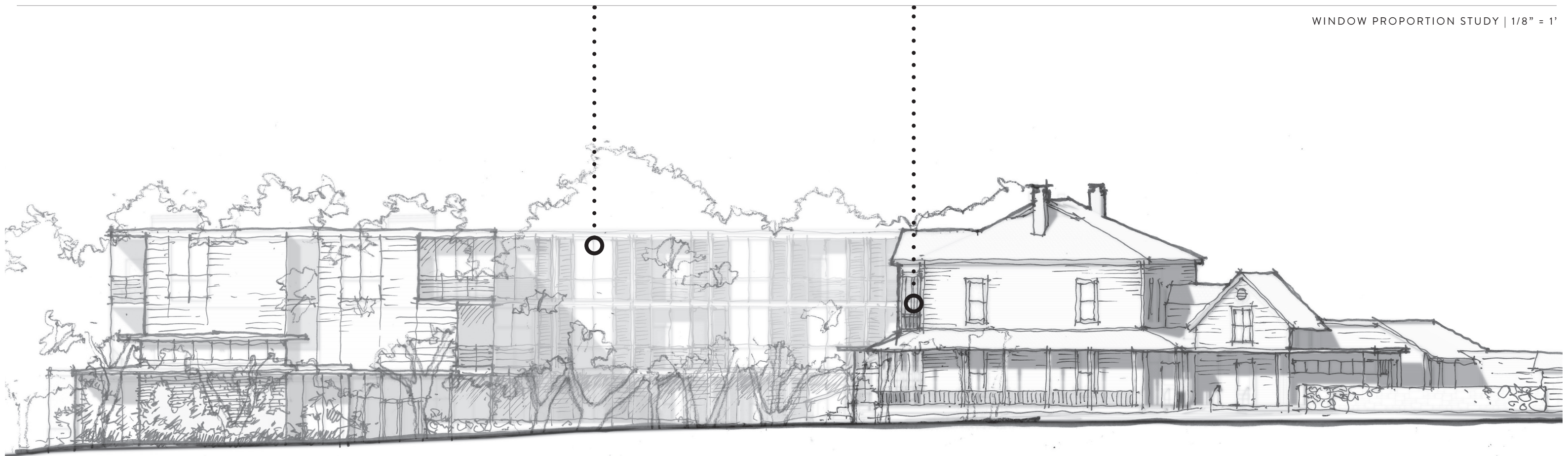


TYPICAL GUEST ROOM WINDOWS



MATTIE'S EAST WINDOWS

WINDOW PROPORTION STUDY | 1/8" = 1'



NORTH SITE ELEVATION | 1/16" = 1'





1. BRICK TO MATCH EXISTING PAVERS



2. PAINTED LAP SIDING



3. WOOD WINDOW SYSTEM



4. STONE SITE WALLS



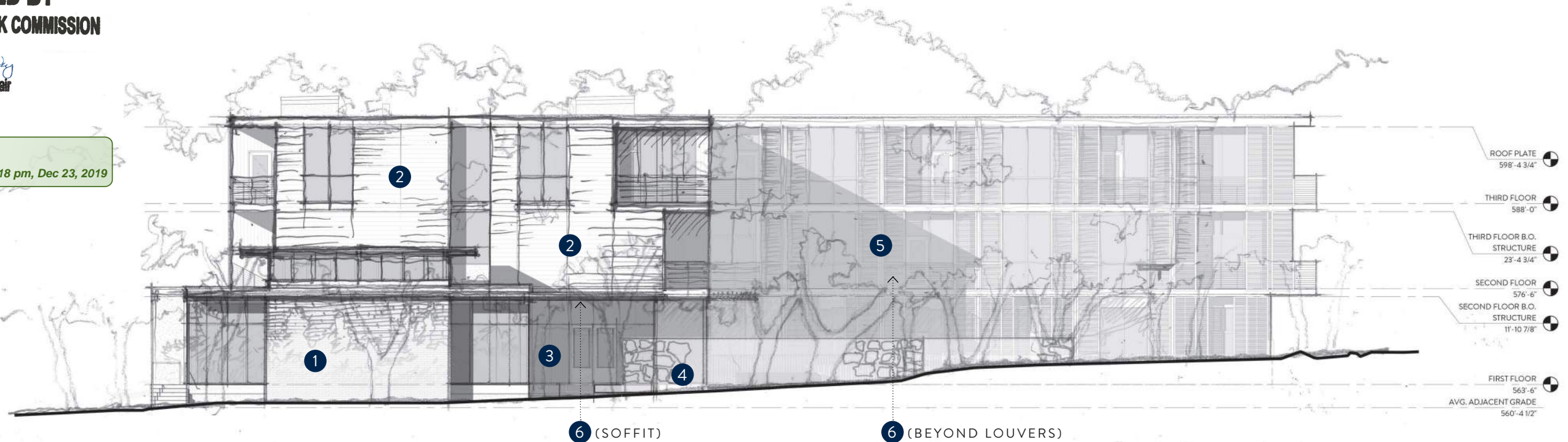
5. WOOD LOUVERS



6. VERTICAL GRAIN CEDAR

**APPROVED BY**  
**HISTORIC LANDMARK COMMISSION**  
DATE:  
BY: *Steve Sadousky*  
for HLC Chair

**APPROVED**  
By Angela Gaudette at 3:18 pm, Dec 23, 2019



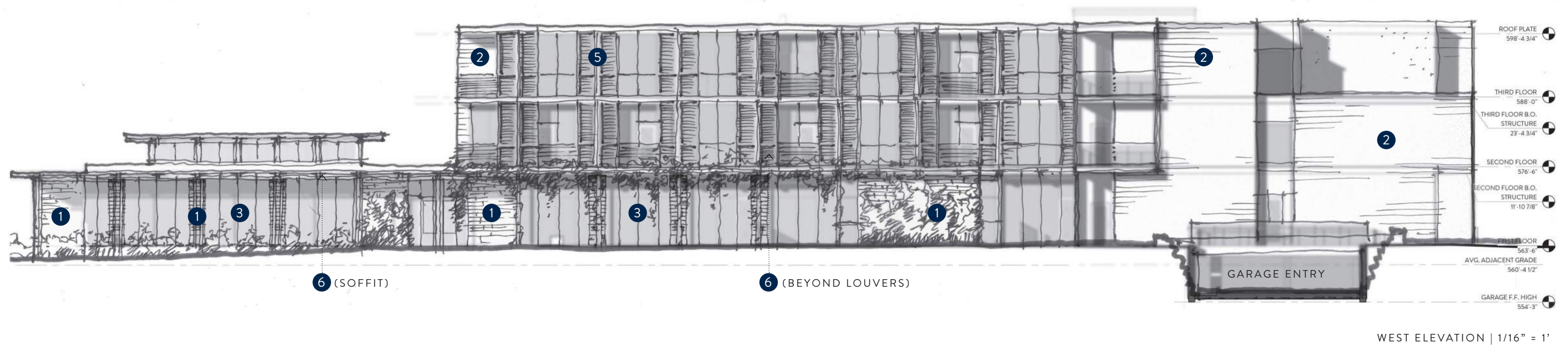
NORTH ELEVATION | 1/16" = 1'



**APPROVED BY**  
**HISTORIC LANDMARK COMMISSION**  
DATE:  
BY: *Steve Sadomsky*  
for HLC Chair

**APPROVED**  
By Angela Gaudette at 3:18 pm, Dec 23, 2019

- 1 BRICK TO MATCH EXISTING PAVERS
- 2 PAINTED LAP SIDING
- 3 WOOD WINDOW SYSTEM
- 4 STONE SITE WALLS
- 5 WOOD LOUVERS
- 6 VERTICAL GRAIN CEDAR





**APPROVED BY**  
**HISTORIC LANDMARK COMMISSION**  
DATE:  
BY: *Steve Sadomsky*  
for HLC Chair

**APPROVED**  
By Angela Gaudette at 3:18 pm, Dec 23, 2019

- 1 BRICK TO MATCH EXISTING PAVERS
- 2 PAINTED LAP SIDING
- 3 WOOD WINDOW SYSTEM
- 4 STONE SITE WALLS
- 5 WOOD LOUVERS
- 6 VERTICAL GRAIN CEDAR



SOUTH ELEVATION | 1/16" = 1'

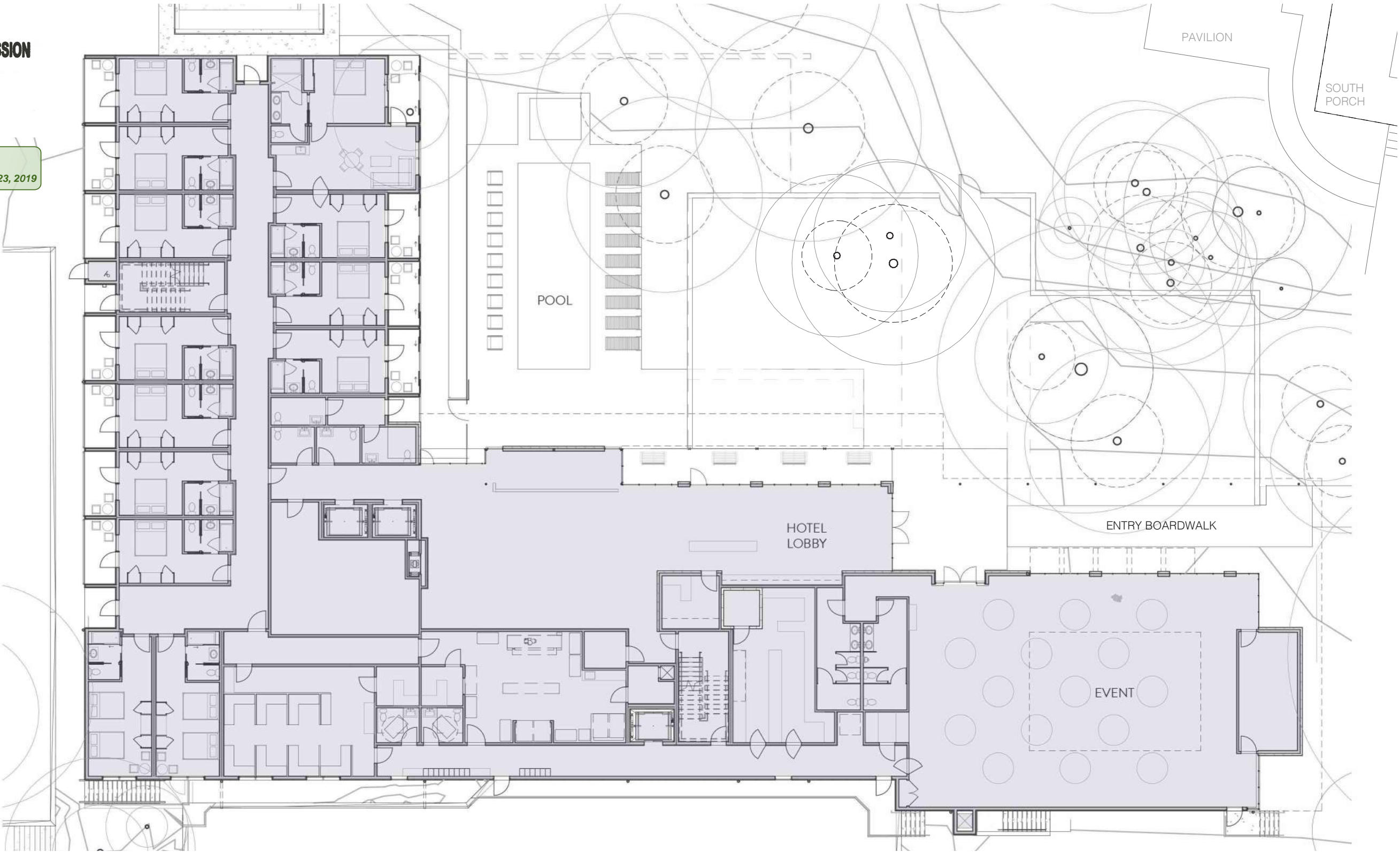


EAST ELEVATION | 1/16" = 1'



**APPROVED BY**  
**HISTORIC LANDMARK COMMISSION**  
DATE:  
BY: *Steve Sabousky*  
for HLC Chair

**APPROVED**  
By Angela Gaudette at 3:18 pm, Dec 23, 2019



FLOOR PLAN LEVEL 1 | 1" = 20'





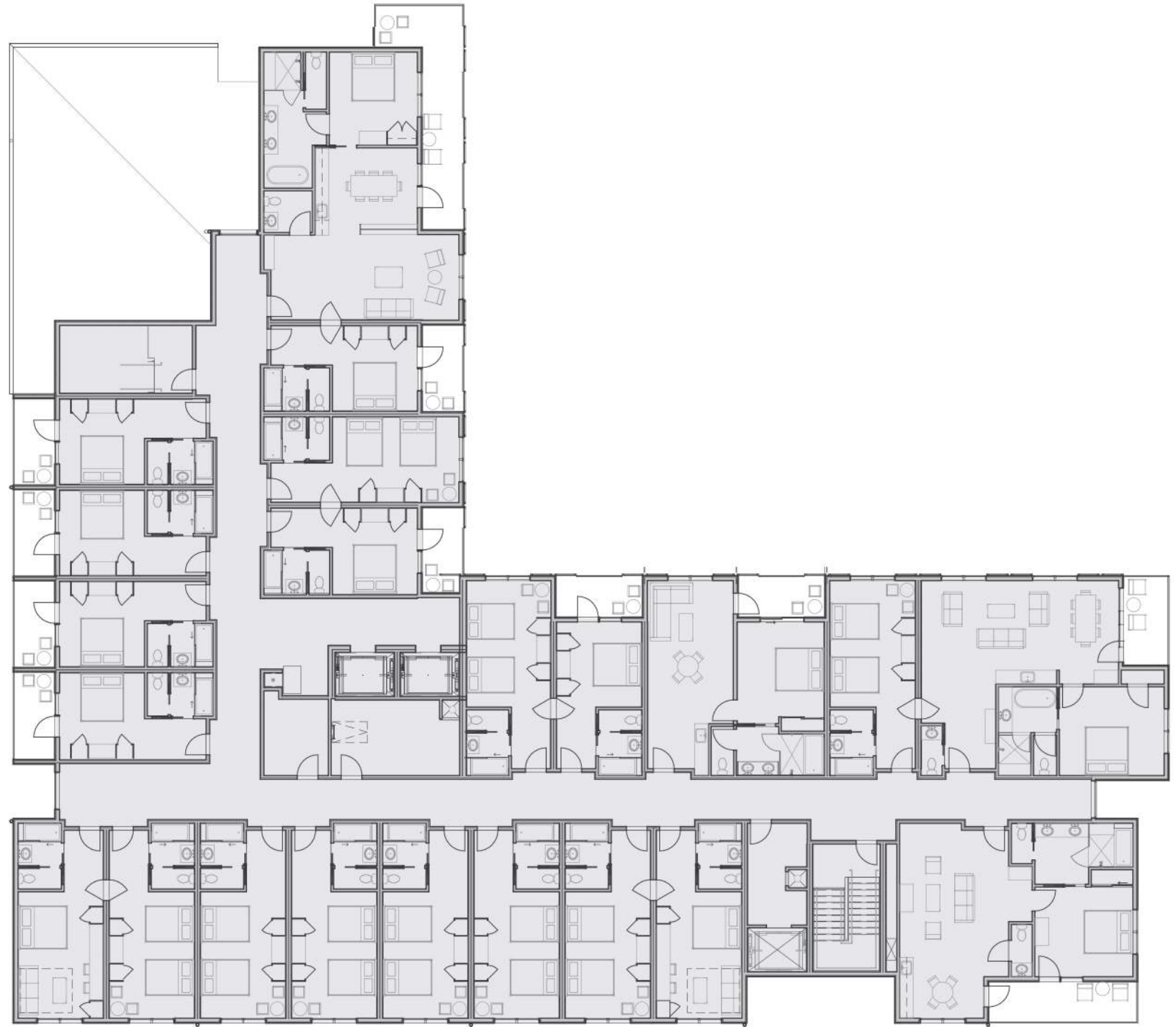
**APPROVED BY**  
**HISTORIC LANDMARK COMMISSION**  
DATE:  
BY: *Steve Sadomsky*  
for HLC Chair

**APPROVED**  
By Angela Gaudette at 3:18 pm, Dec 23, 2019



FLOOR PLAN LEVEL 2 | 1" = 20'





**APPROVED BY**  
**HISTORIC LANDMARK COMMISSION**  
DATE:  
BY: *Steve Sadomsky*  
for HLC Chair

**APPROVED**  
By Angela Gaudette at 3:18 pm, Dec 23, 2019



FLOOR PLAN LEVEL 3 | 1" = 20'