

The Post

Austin, Texas



City of Austin Historic Landmark Commission

November 2, 2022

*Complete interior rehabilitation of the former
Claudia Taylor Johnson Hall and U.S. Post
Office.*

Owner: Kilroy Realty
Architect of Record: Page Architects
Interior Architect: Rockwell Group
Historic Preservation Consultant: Architexas

United States Post Office

Austin, Texas

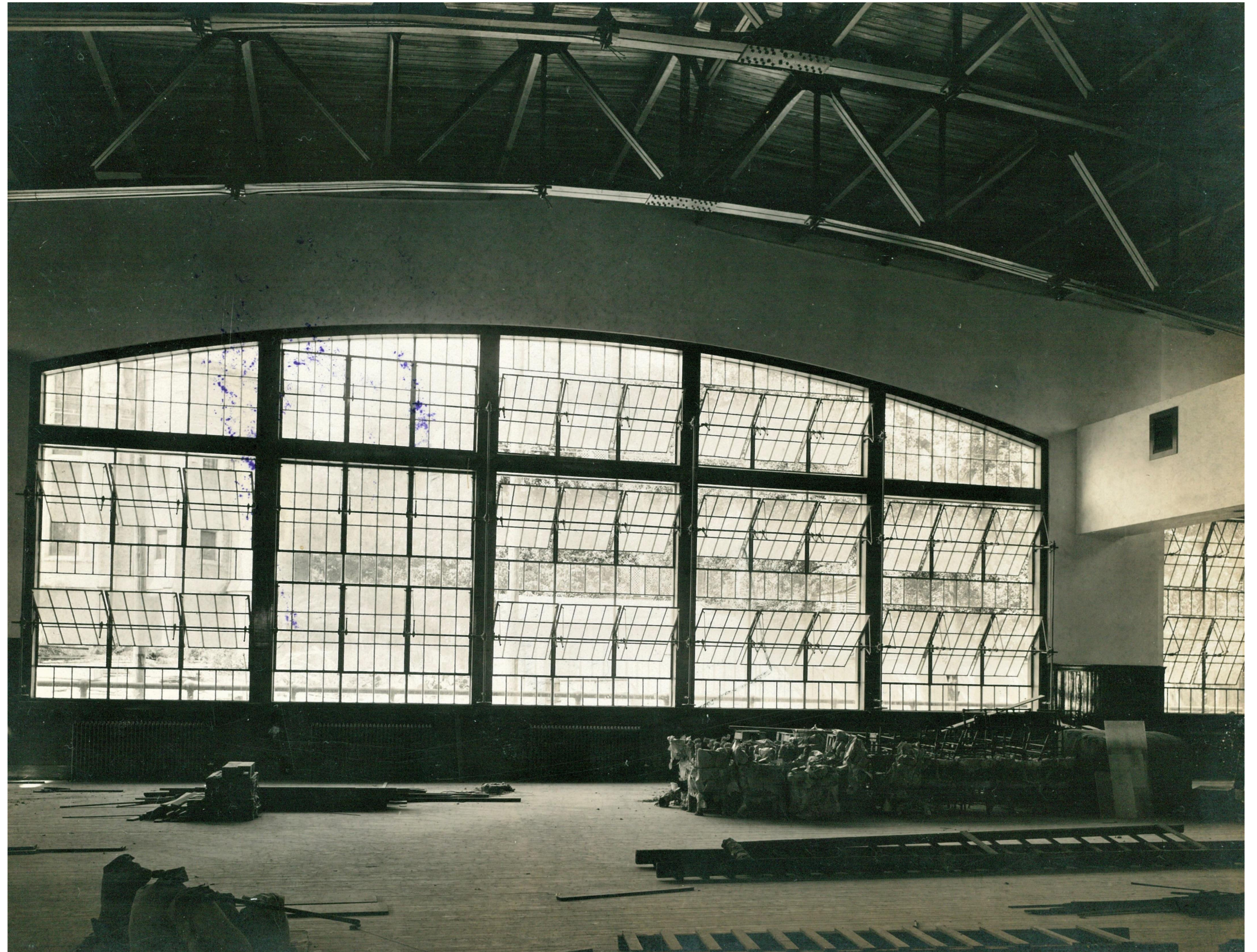
- Listed in the National Register of Historic Places
- Recorded Texas Historic Landmark



Circa 1914, *Austin History Center*

North Elevation

Circa 1914, *Austin History Center*





Existing Conditions

- Indeed Tower and exterior restoration of the post office was completed in 2021

Existing Conditions



Existing Conditions

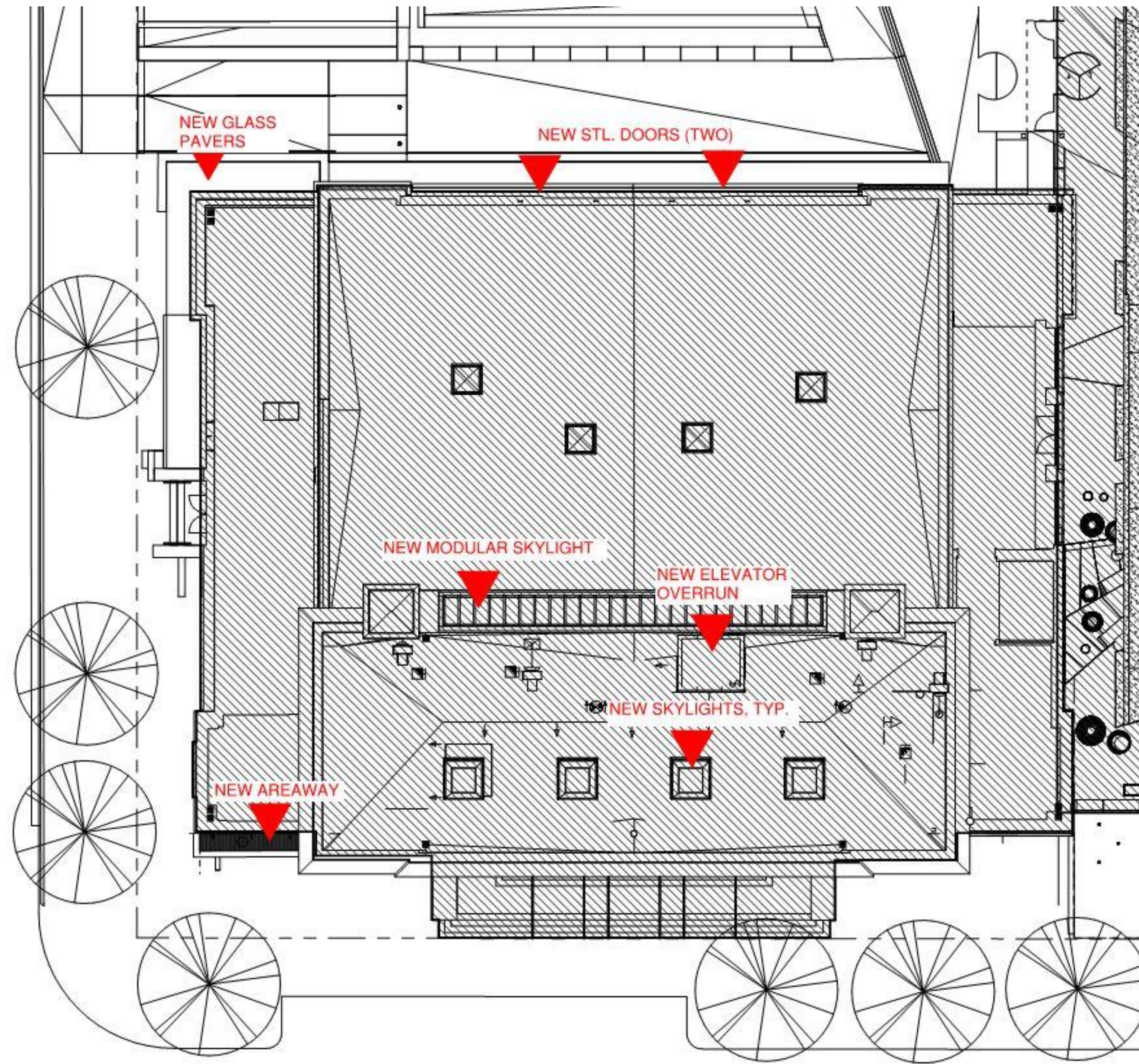




Current Scope of Work

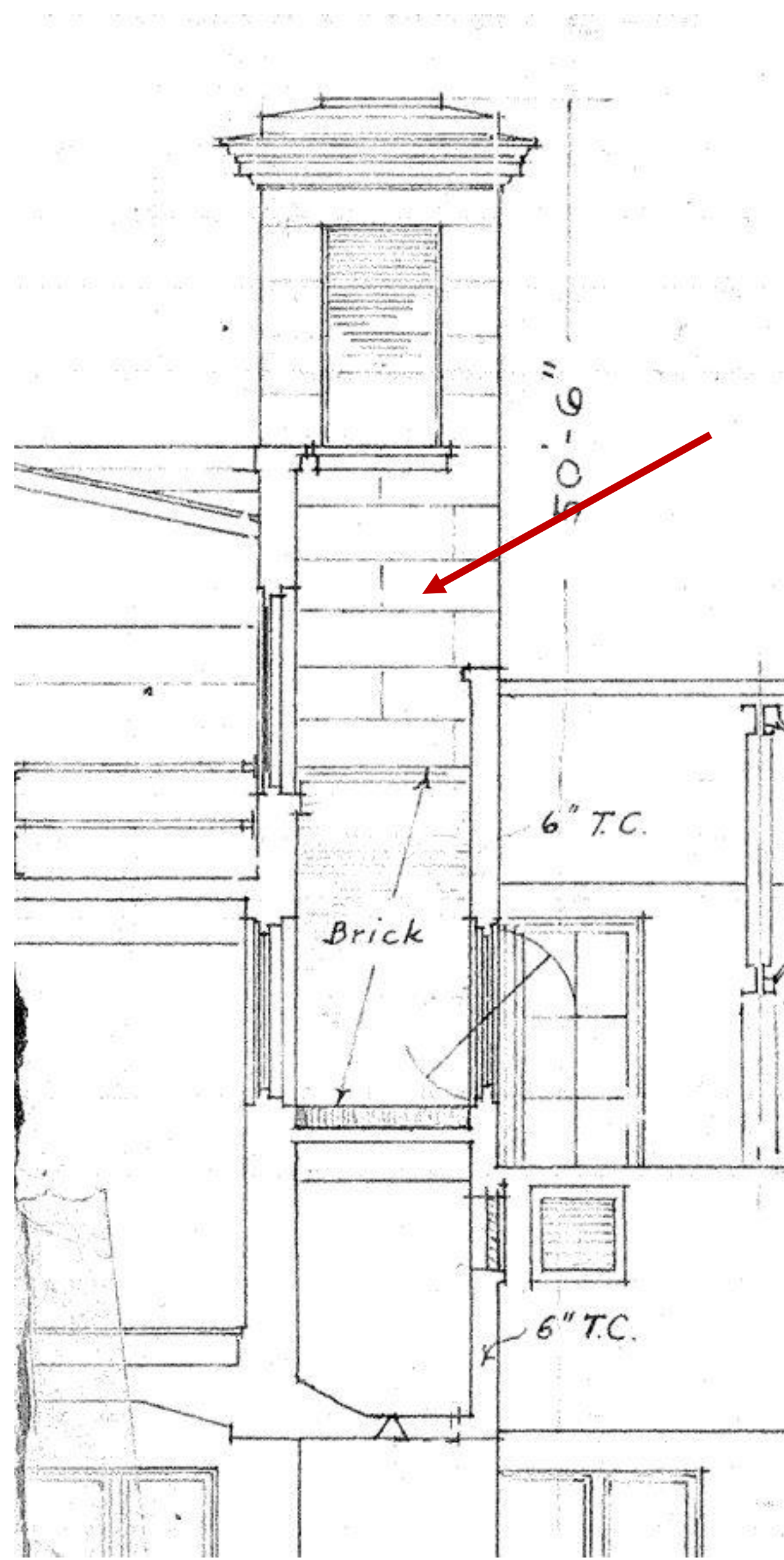
- Site: Replace non-orig. pavers over cellar areaway with glass block, new areaway
- Roof: Create new modular skylight system, install new elevator shaft, and replace skylights
- Glazing: Replace ext. glazing at street elevations with laminated, Low-E glazing.
- Ext. Windows: Repaint windows
- Ext. Doors: Add two custom stl. doors at north elevation.

LAVACA ST.

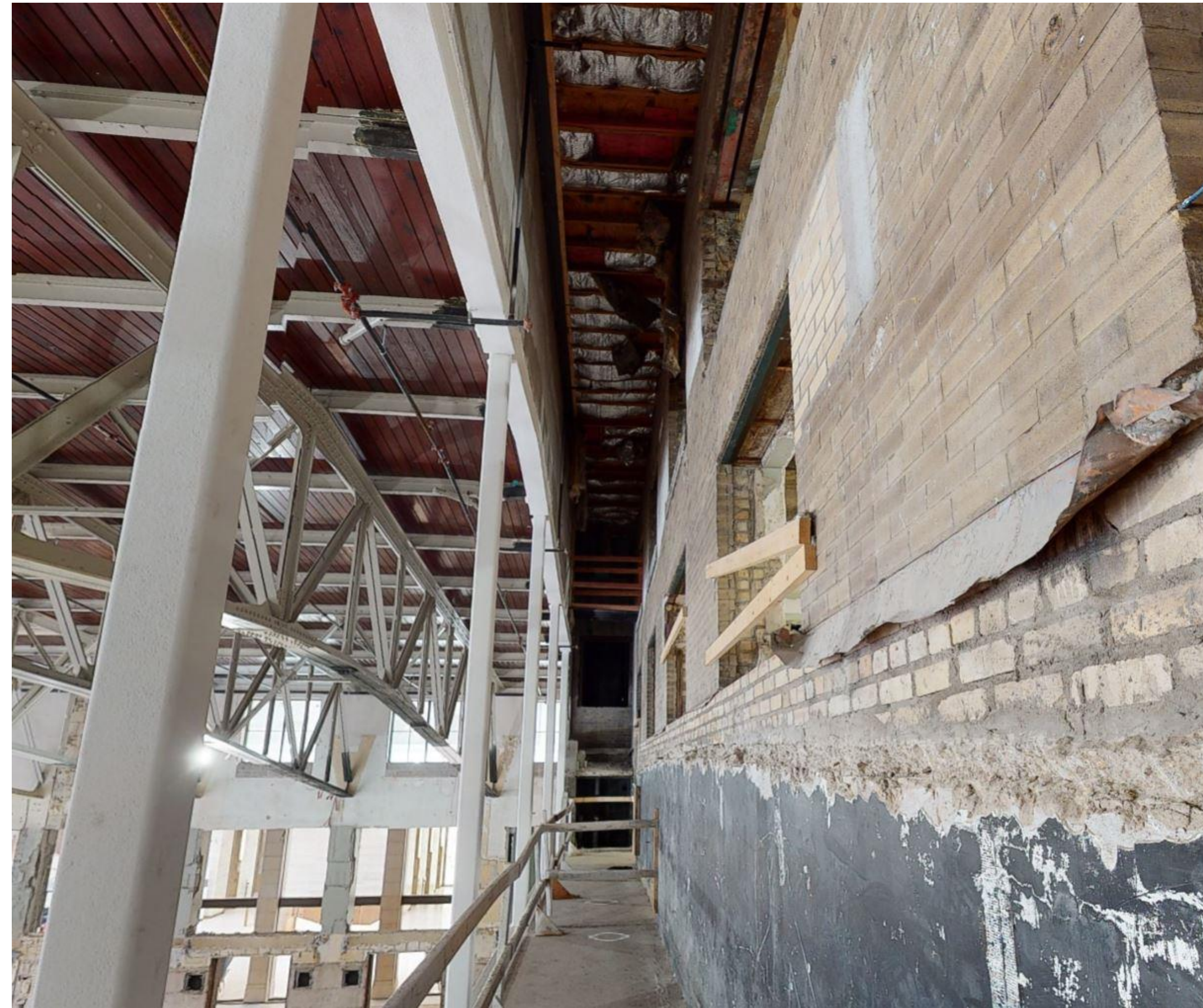


W. 6TH ST.

Site Plan

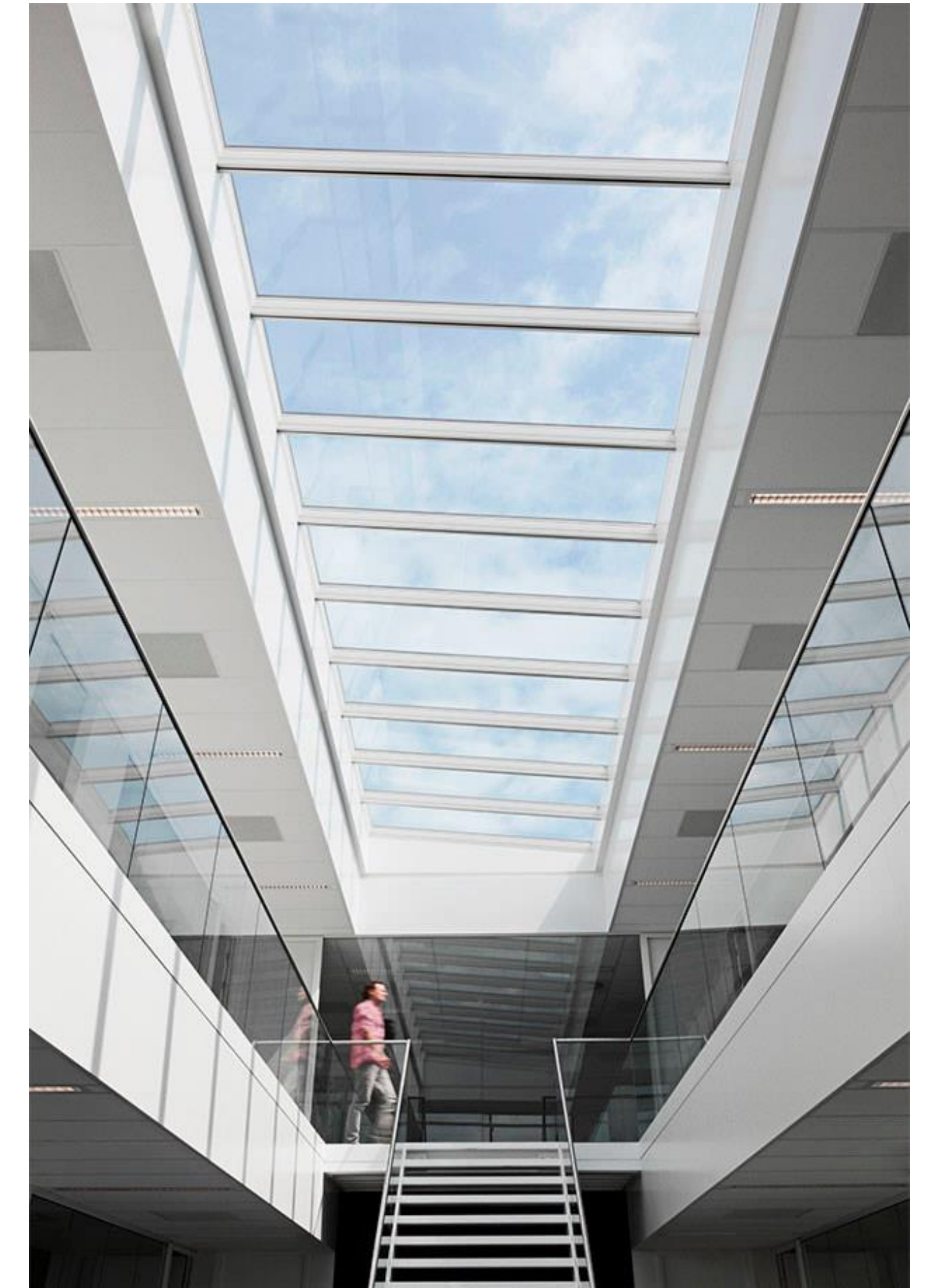


Original light well



Exist. roof over lightwell will be replaced with modular skylight

Modular Skylight



Proposed modular skylight by VELUX

New Skylights



Existing skylights (above, right)



GSM

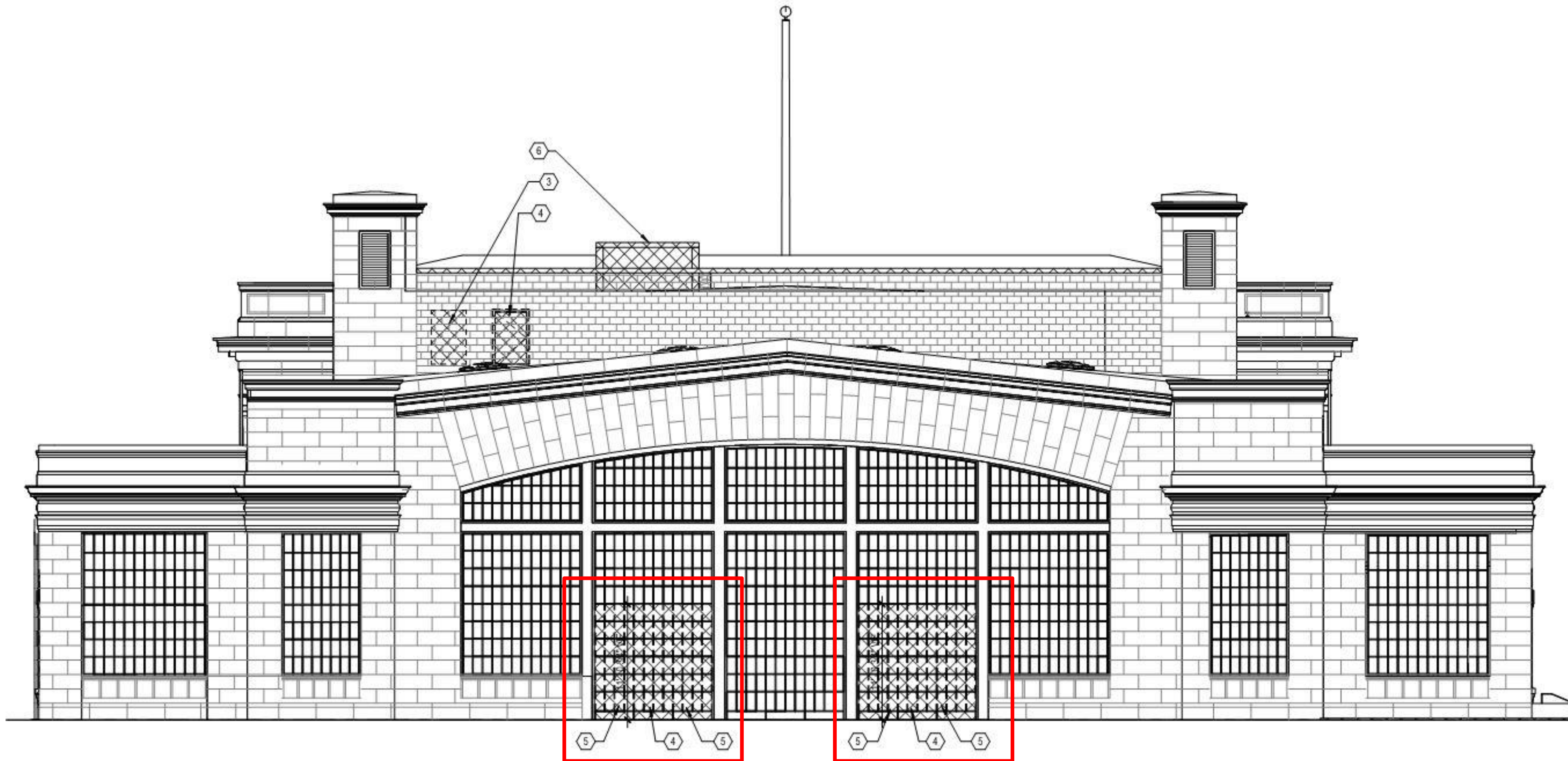
SkyMax Fixed Skylight

Fill your home with bright, natural daylight! Spanning up to 10 feet, the dramatic SkyMax skylight doubles the square footage of standard flat glass skylights – without losing thermal efficiency. The SkyMax also incorporates a condensation channel to prevent leaking, eliminating the need for weep holes. For large, single light spans, the vinyl frame is structurally reinforced with aluminum. All SkyMax have a standard polyester powder coat finish in VELUX Grey. Additional designer colors, including copper cladding are available.

1° - 60°
¼:12 - 20:12

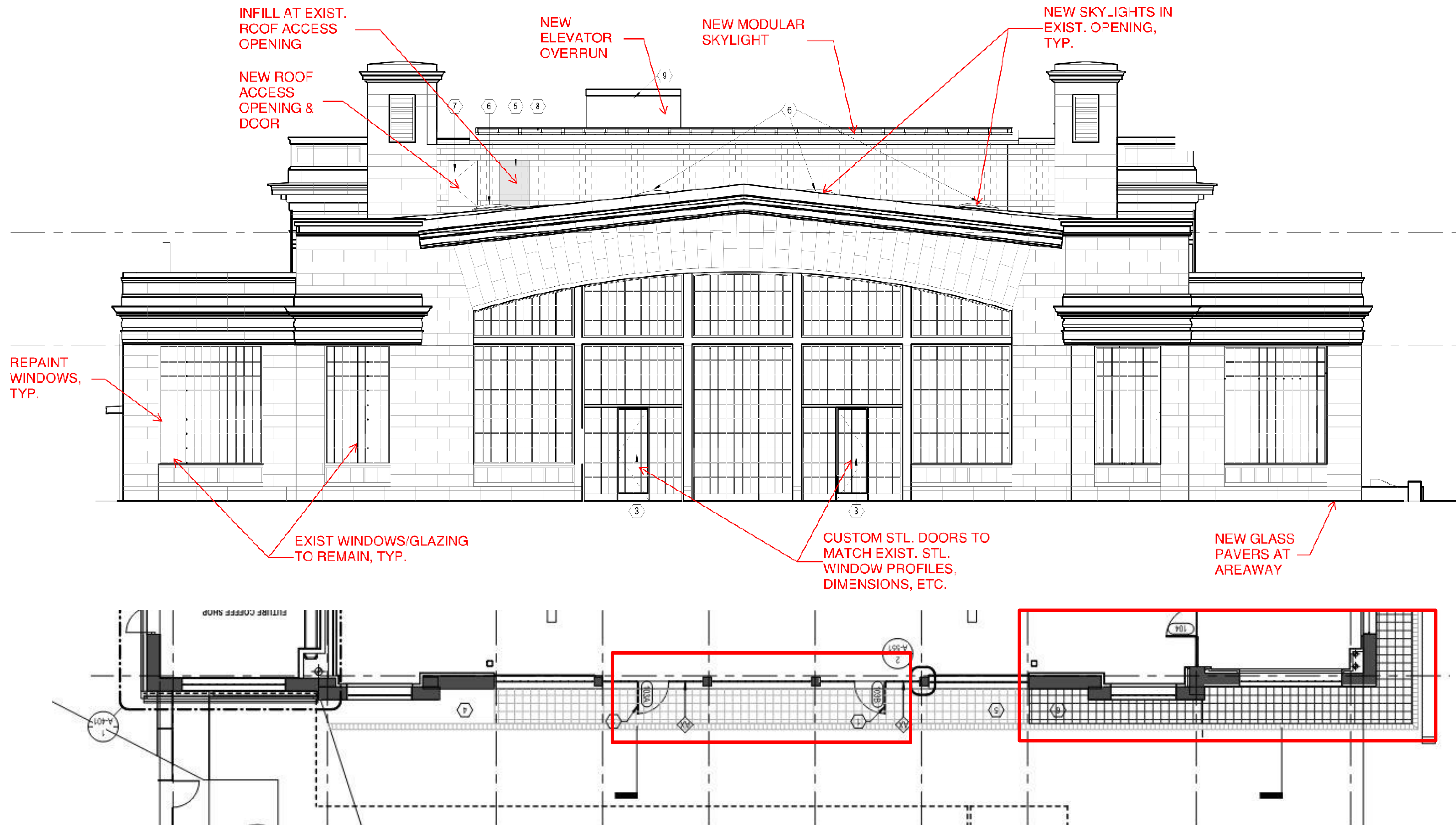
Proposed new skylights by VELUX (right)

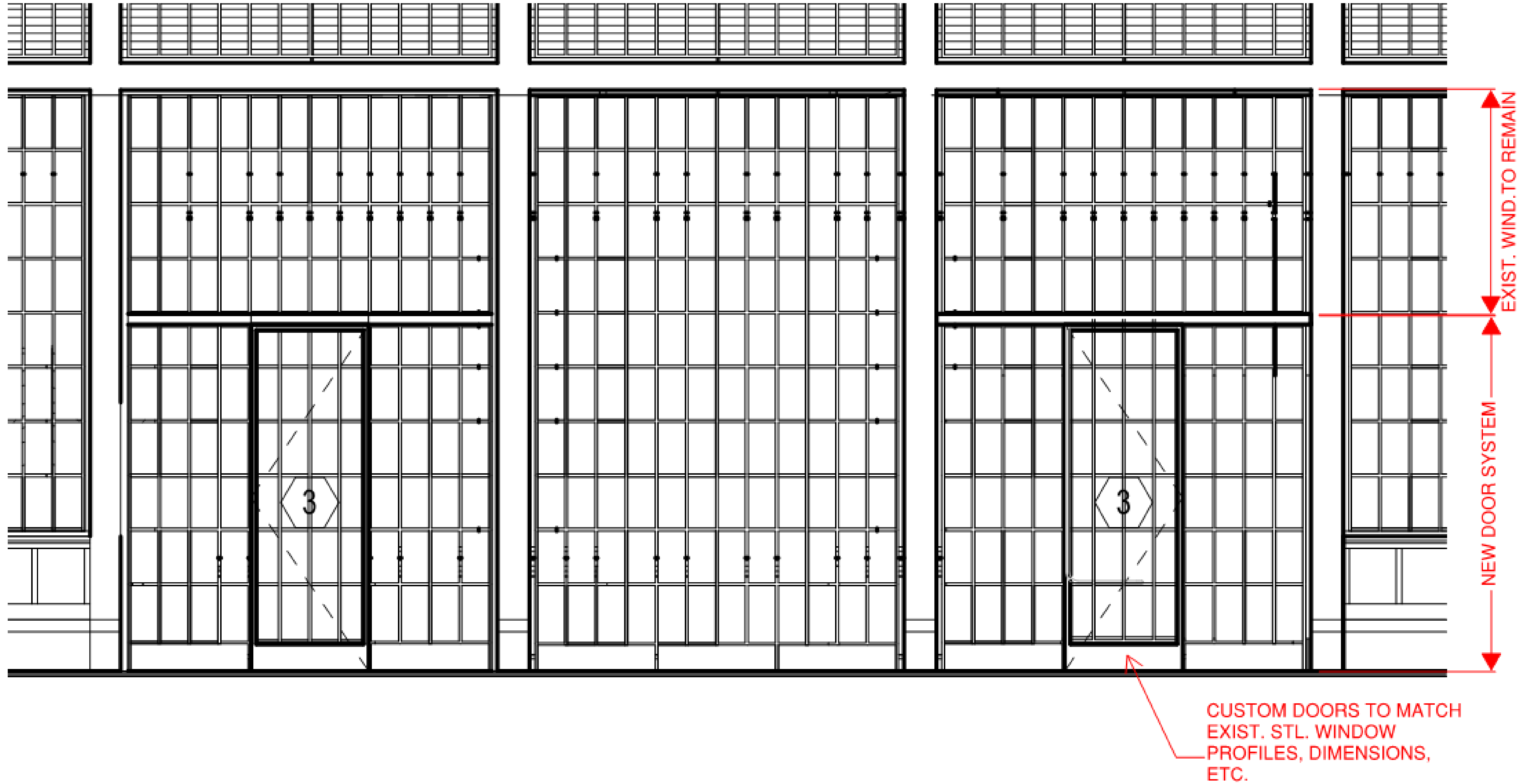
North Elevation



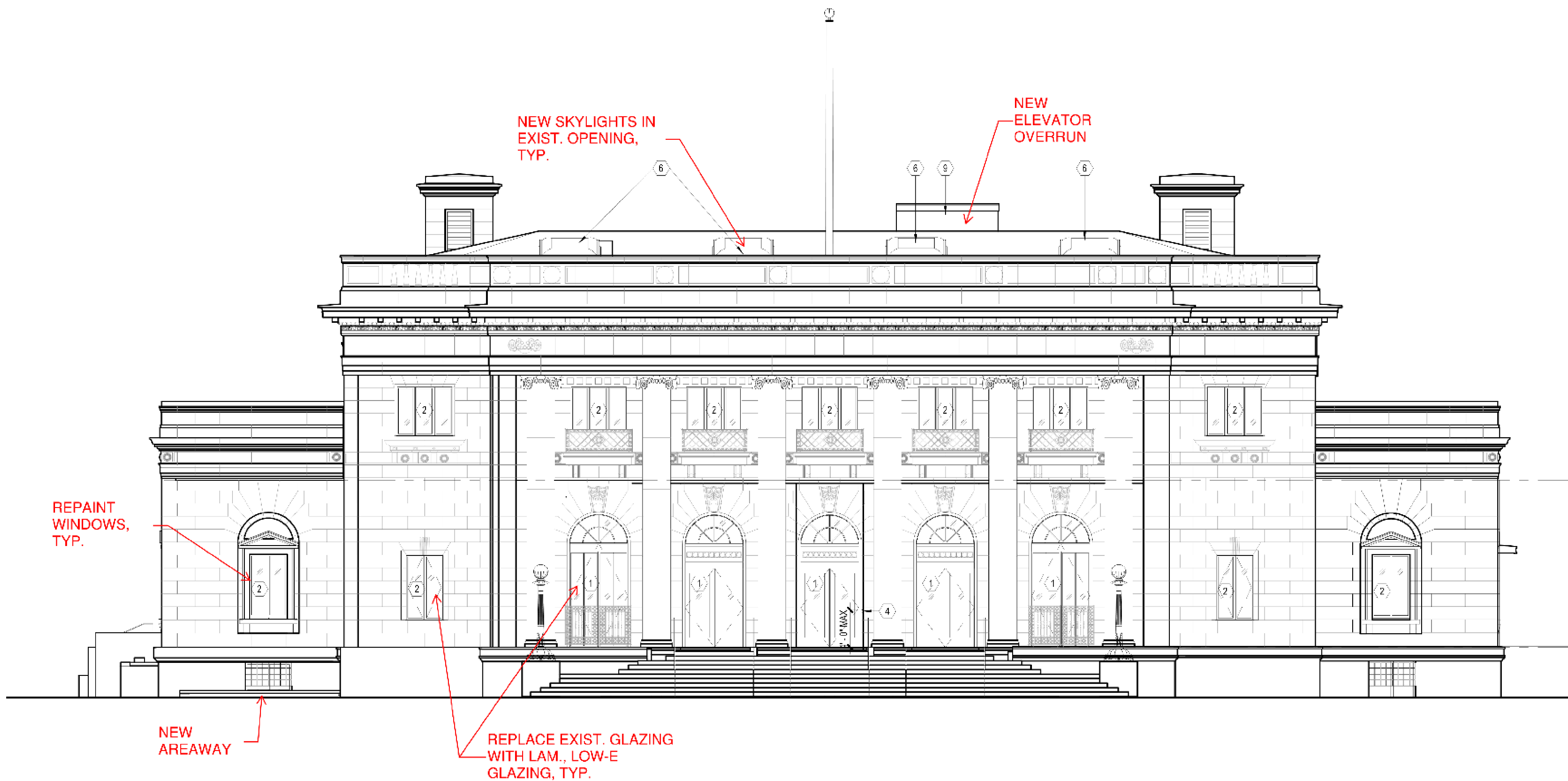
REMOVE PORTION OF STL. WINDOWS FOR INSTALLATION OF NEW DOOR FRAME SYSTEM

North Elevation

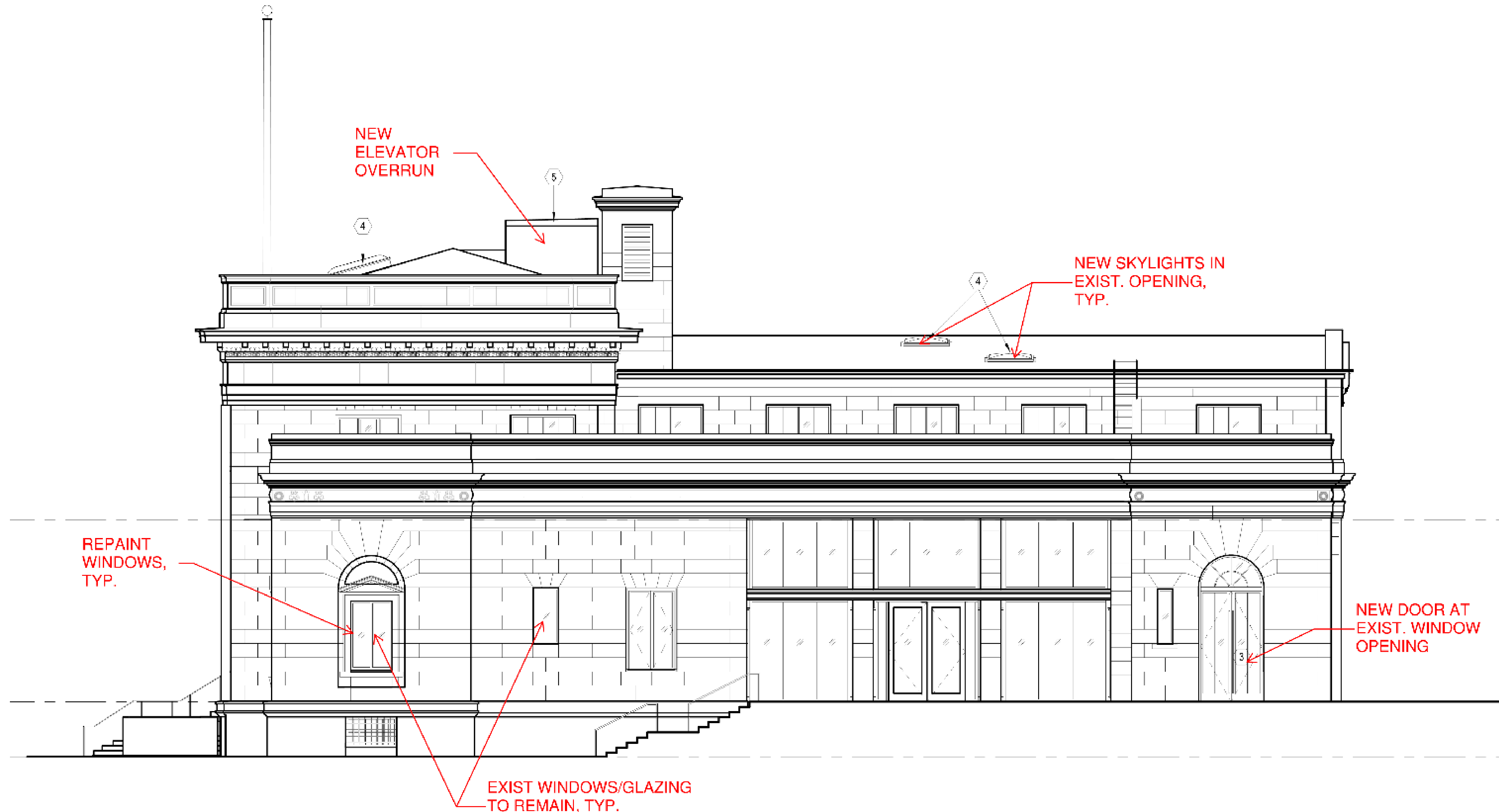




South Elevation



East Elevation



West Elevation

