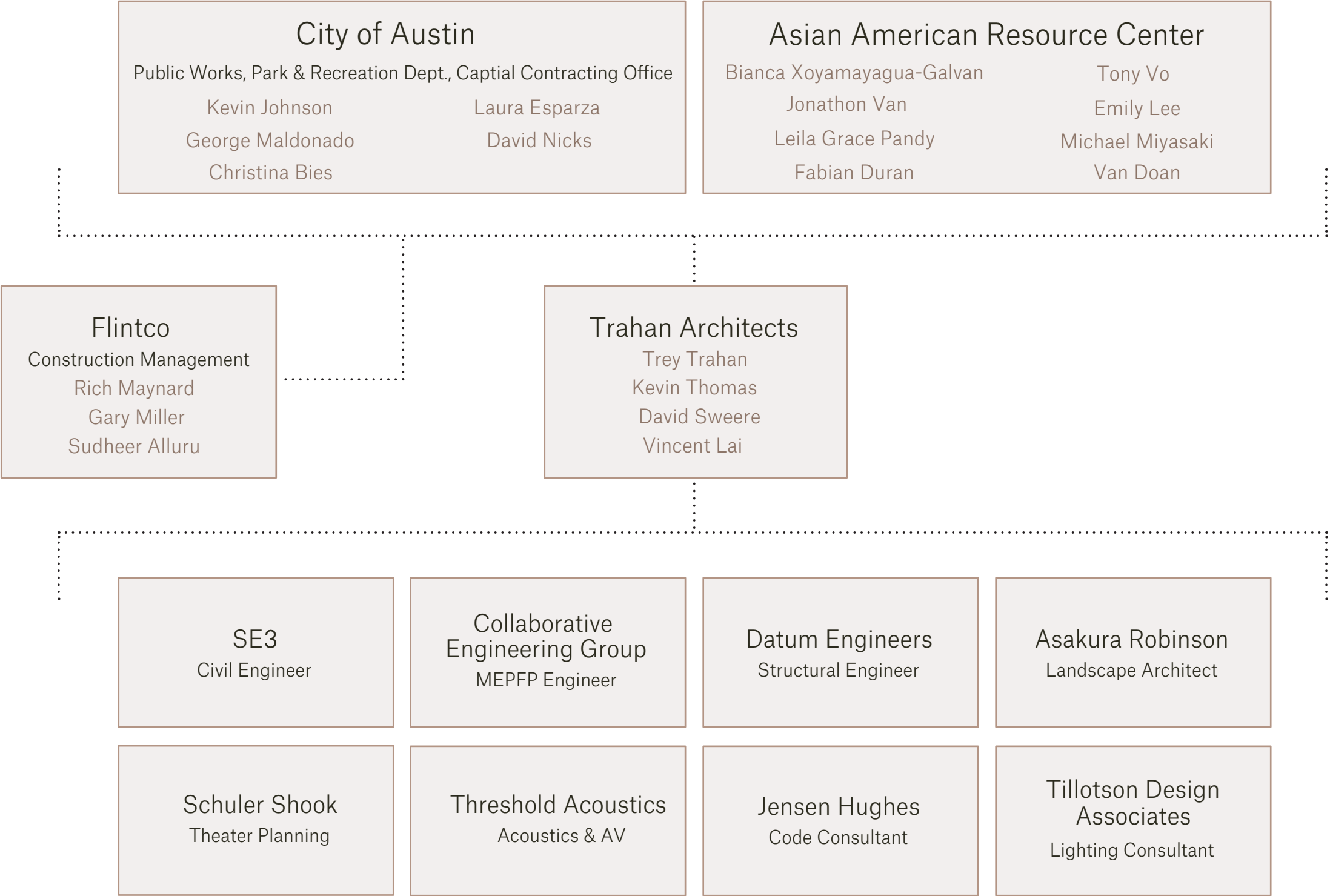


TRAHAN ARCHITECTS

Asian American Resource Center Phase II

Schematic Design Presentation
November 15, 2022

Project Team



Project Introduction & Goals

AARC Guiding Principles & Values

MISSION STATEMENT

The Asian American Resource Center's mission is to create a space of belonging and healing for Asian American communities in Austin and beyond. We do this through community Collaborations and partnerships; providing rental space; organizing cultural, educational, and health wellness programs and curating art and historical exhibitions. We lead with our values and our vision, so that our diverse communities are supported and connected.

VALUES

Diversity - Acknowledging our cultures and histories.

Solidarity - Recognizing our interconnectedness with ourselves and other communities of color.

Peace - Creating space for healing and unity.

Collaboration - Building relationships and co-creating.

Intergenerational - Connecting through stories.

PROJECT DESIGN GUIDELINES

Grandeur - Grand Gestures to the Landscape, Entry, + Public Areas

Iconic - Prominence as the Campus's recognizable Building + AARC Identity

Flow - Connection Between Spaces, People and Landscape

Transparency - Visible and physical connections between Interior to Exterior Spaces

Tex-Asian (Interconnectedness) - Intersection of Asian + Local Influences

Harmony with Nature - Commitment to social and environmental sustainability.
Improve people's well-being and make life more enjoyable.

Precedent Images

These images are a collection of precedent images collected by AARC staff as part of a design charrette on June 17, 2022- The images were requested by Trahan Architects in response to the following request:

Each team member to bring images that resonate with them regarding the following. We will ask each team member to discuss the images and reasons for selection and the relevance to this project. These images will form part of the engagement information obtained from programming.

- Asian Influence
- Values of the AARC
- An Architectural Project
- Local/Austin/Texas Influence

The design categories were established in collaboration AARC and PARD staff to find common elements that weaved through the images and how they could influence the project design.

Grandeur Gestures into the Landscape



Flow Connections Between Spaces and Peo-



Contemporary Explorations



Contemporary Explorations



Transparency Light, Shadow, and Visual Connections



Harmony with Nature Landscape



Tex-Asian (Interconnectedness) Comparing Asian, American, and Asian American Vernacular



Native Landscape



Site Design

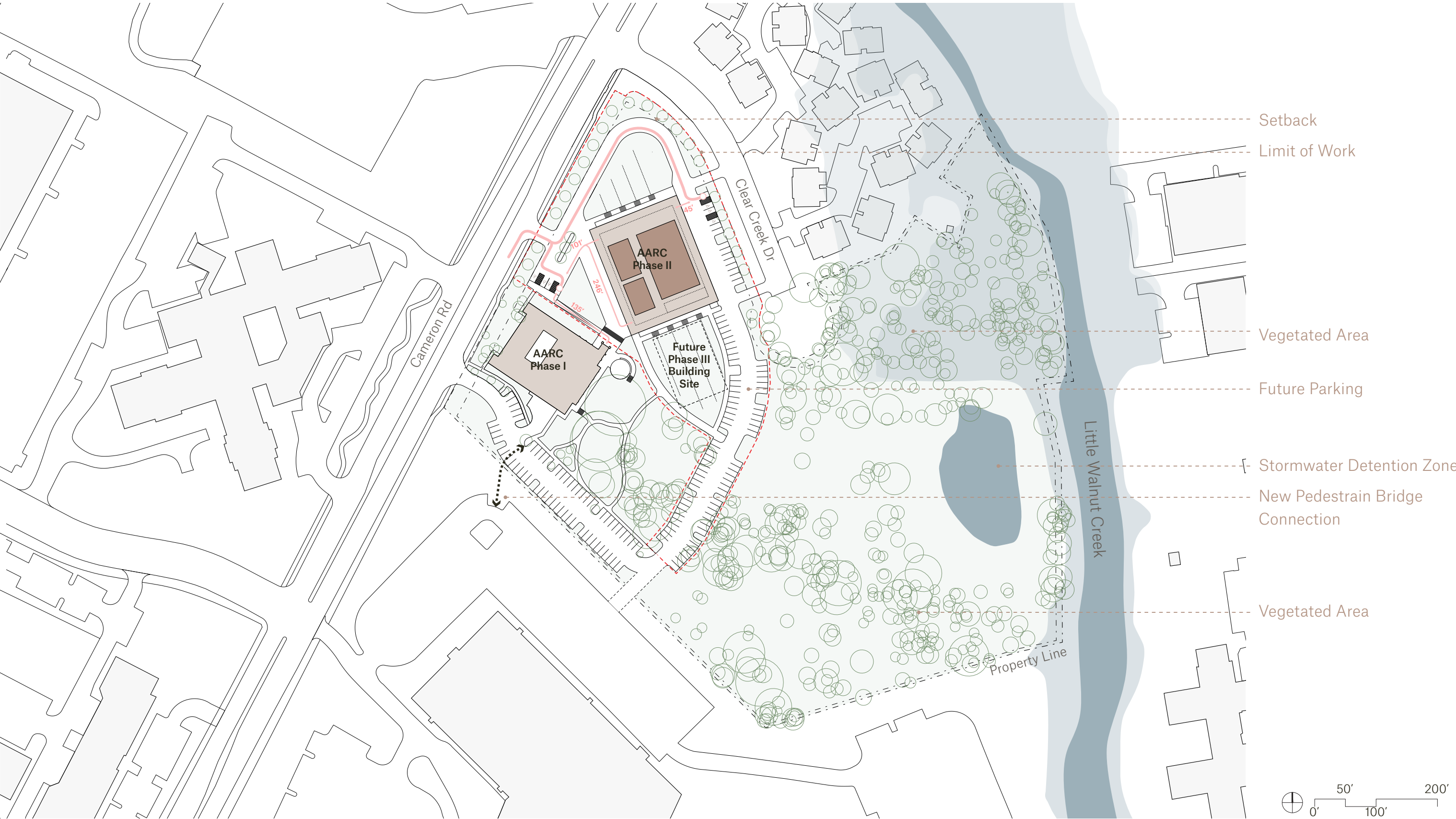
Site Design

Aerial Image - Phase II



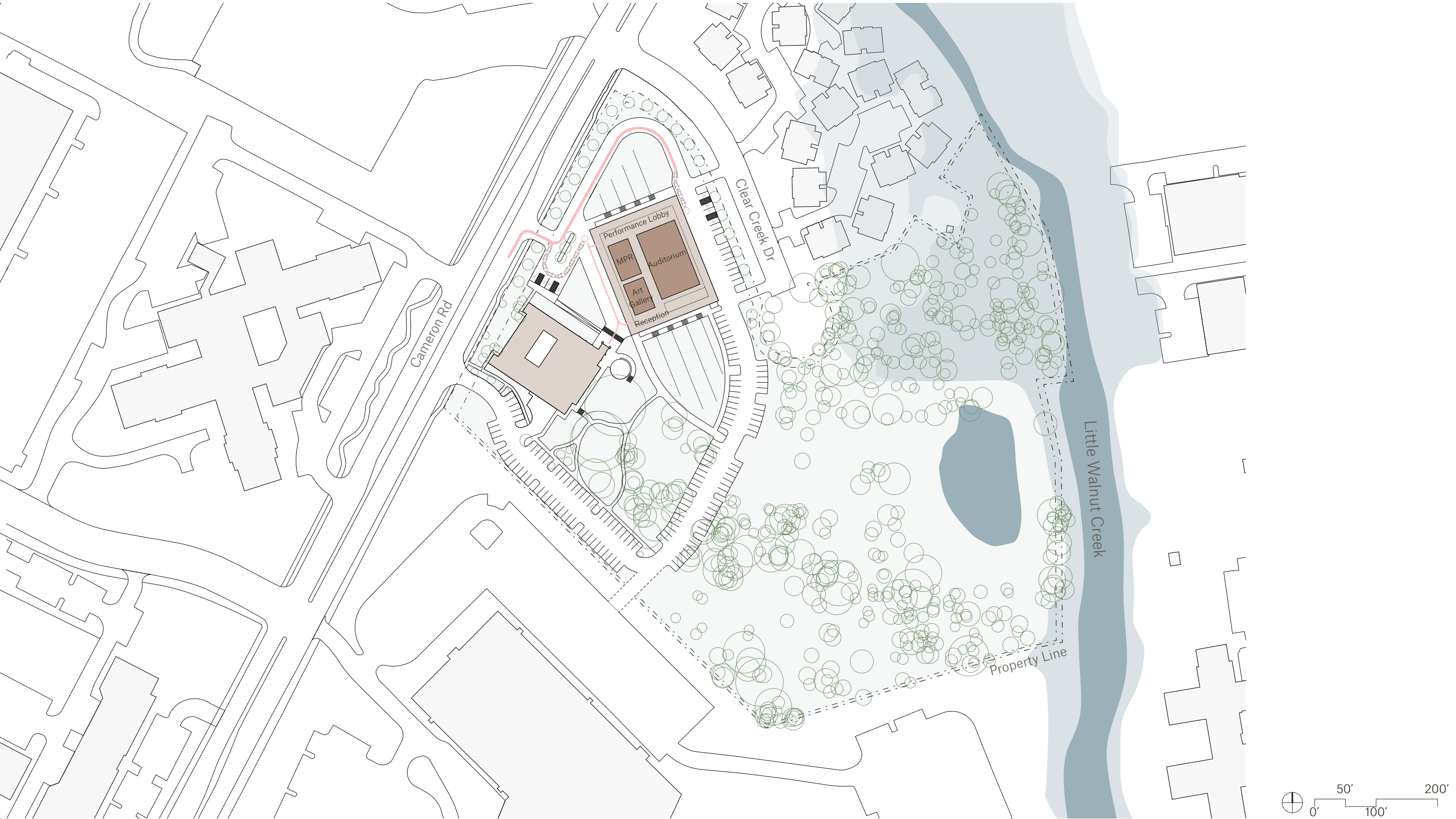
Site Plan

Future Phase III Building Site



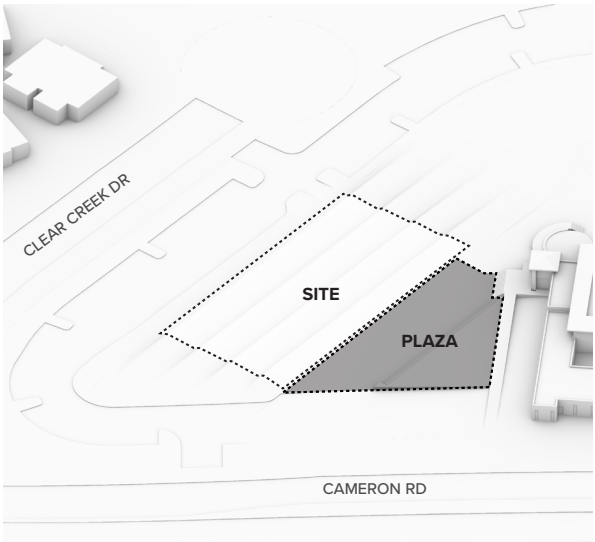
Site Plan

Site Circulation - Dropoff



Massing

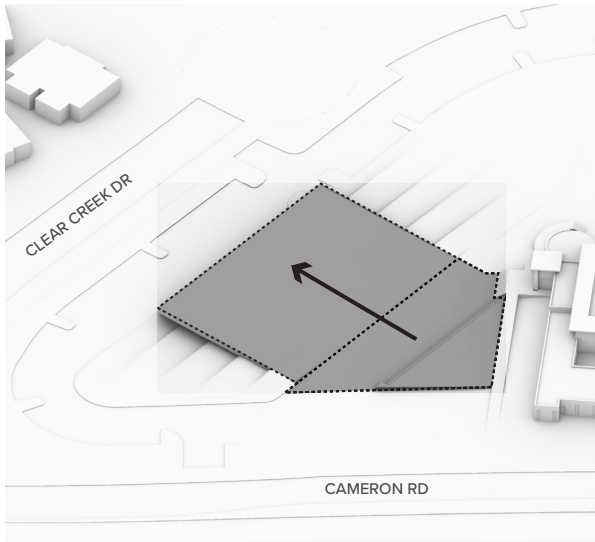
Conceptual Design



1

Terrace the Site

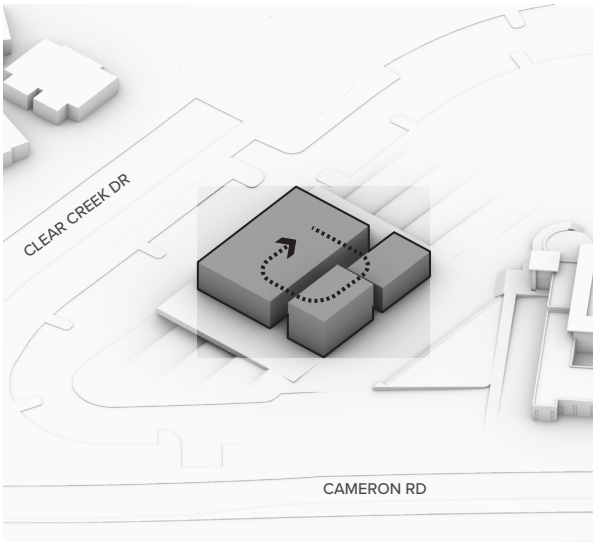
Undulating, terraced topography influenced by Asian Agricultural Vernacular



2

Extend the Plaza

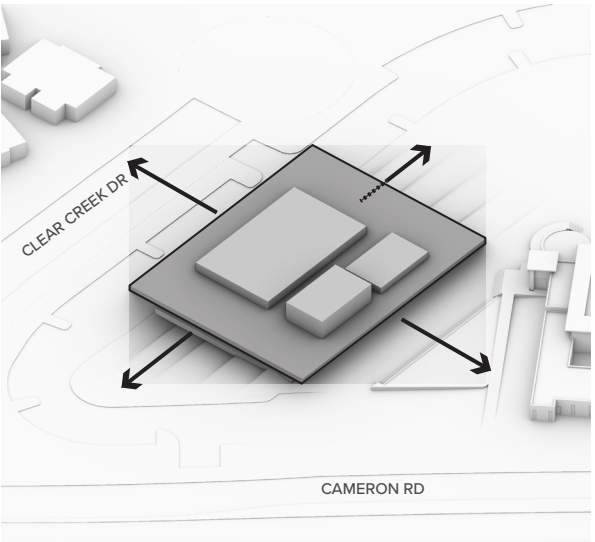
Extending the public platform for the site to make the building accessible



3

A Market of Cultural Activity

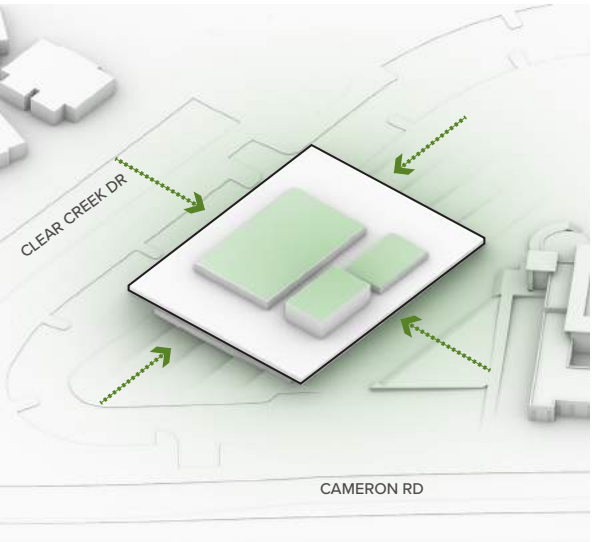
Creating a cultural market place to experience a variety of arts and culture, but also to foster a community and celebrate culture with friends and family.



4

Unify under a canopy, creating a wrap-around porch

Referencing the first asian-american settlements and local texas vernacular to create a unifying, protected outdoor public space around the building.



5

Harmonize with Nature

From nature, we come, and to nature we belong. To truly preserve, connect and give back to it, we must first discover it. Experiencing the inherent rhythm of nature - the sunrises, and passing of the moon - strive to enhance our sense of surroundings, identity and relationship to the environment.

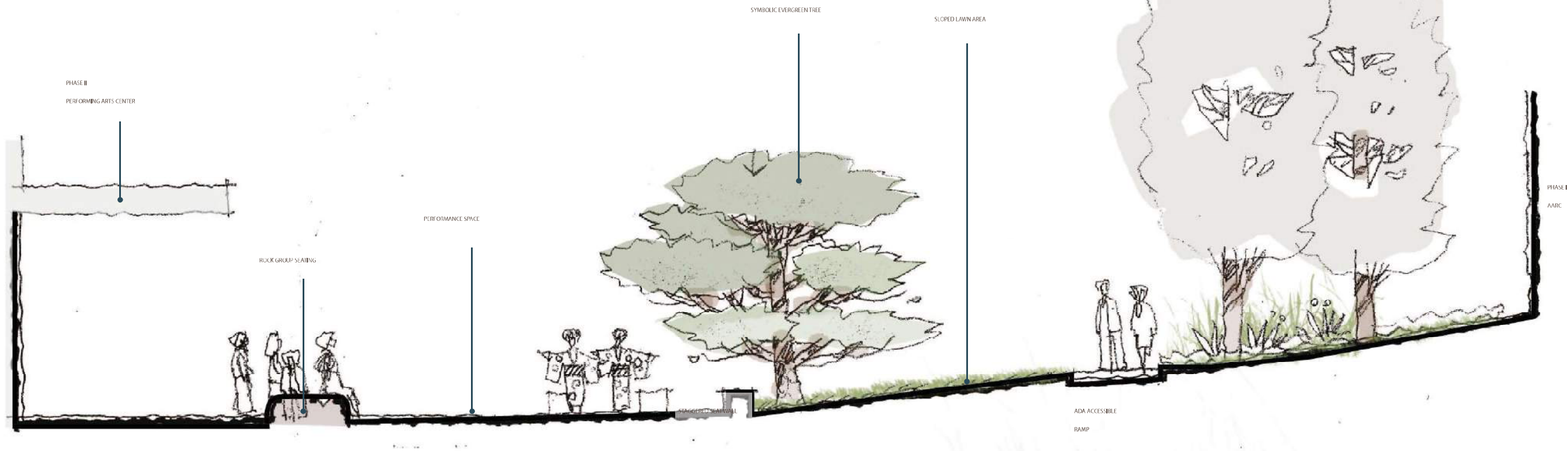
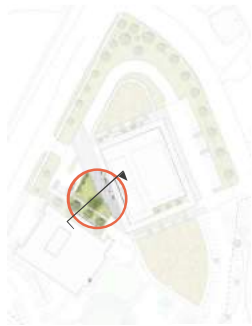
Landscape Strategy

Conceptual Design



Landscape Strategy

Performance Plaza

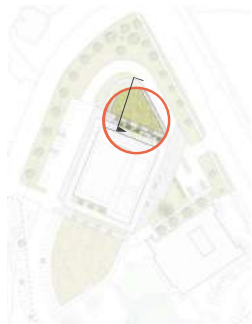


Character Imagery

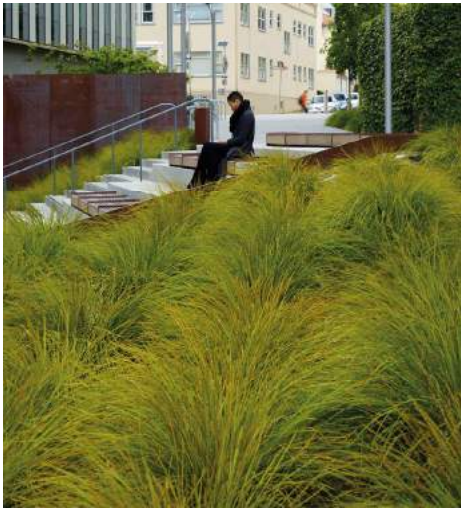


Landscape Strategy

North Lawn & Courtyard



Character Imagery

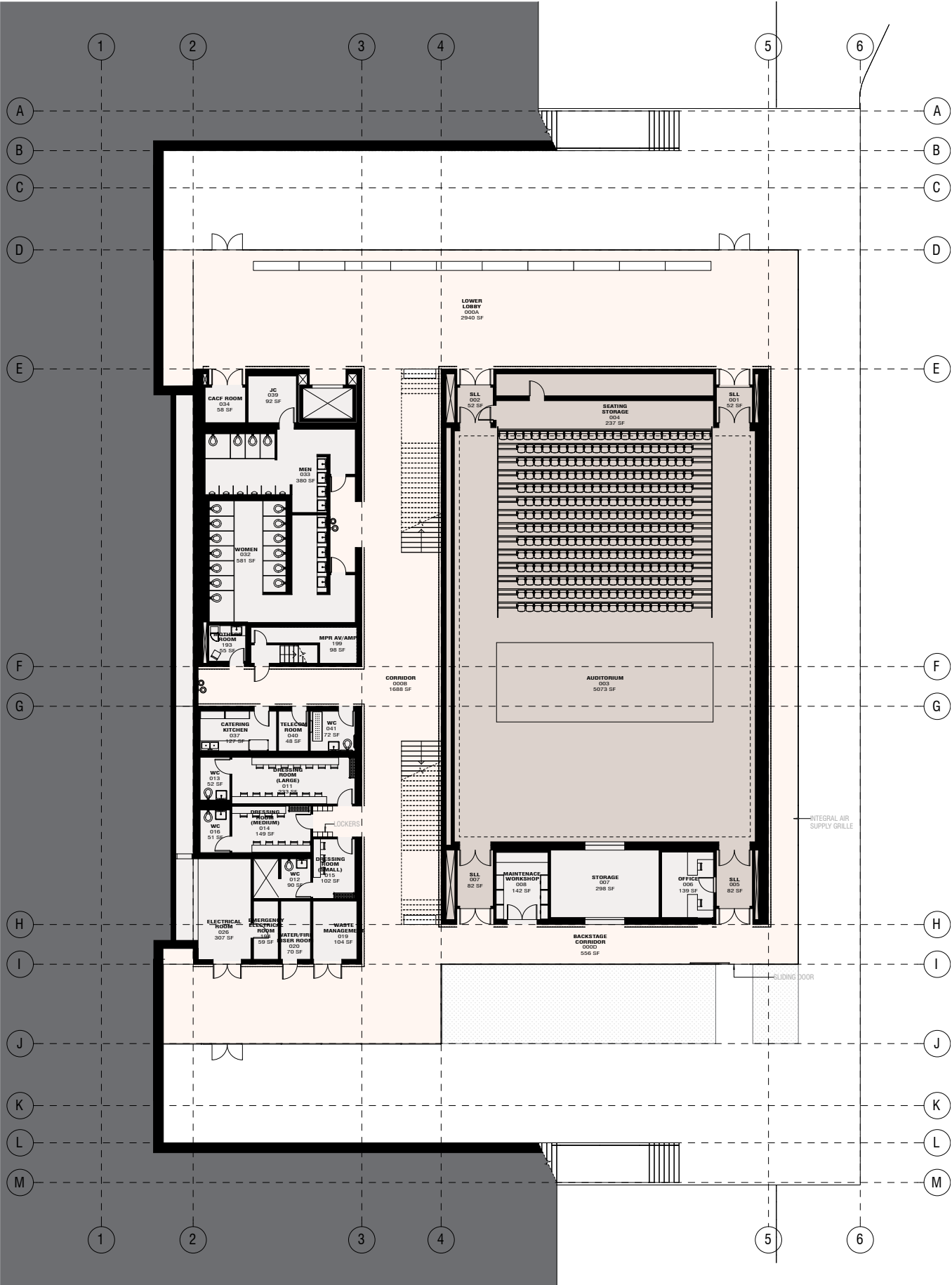


Building Plans

Building Plans

Level 0

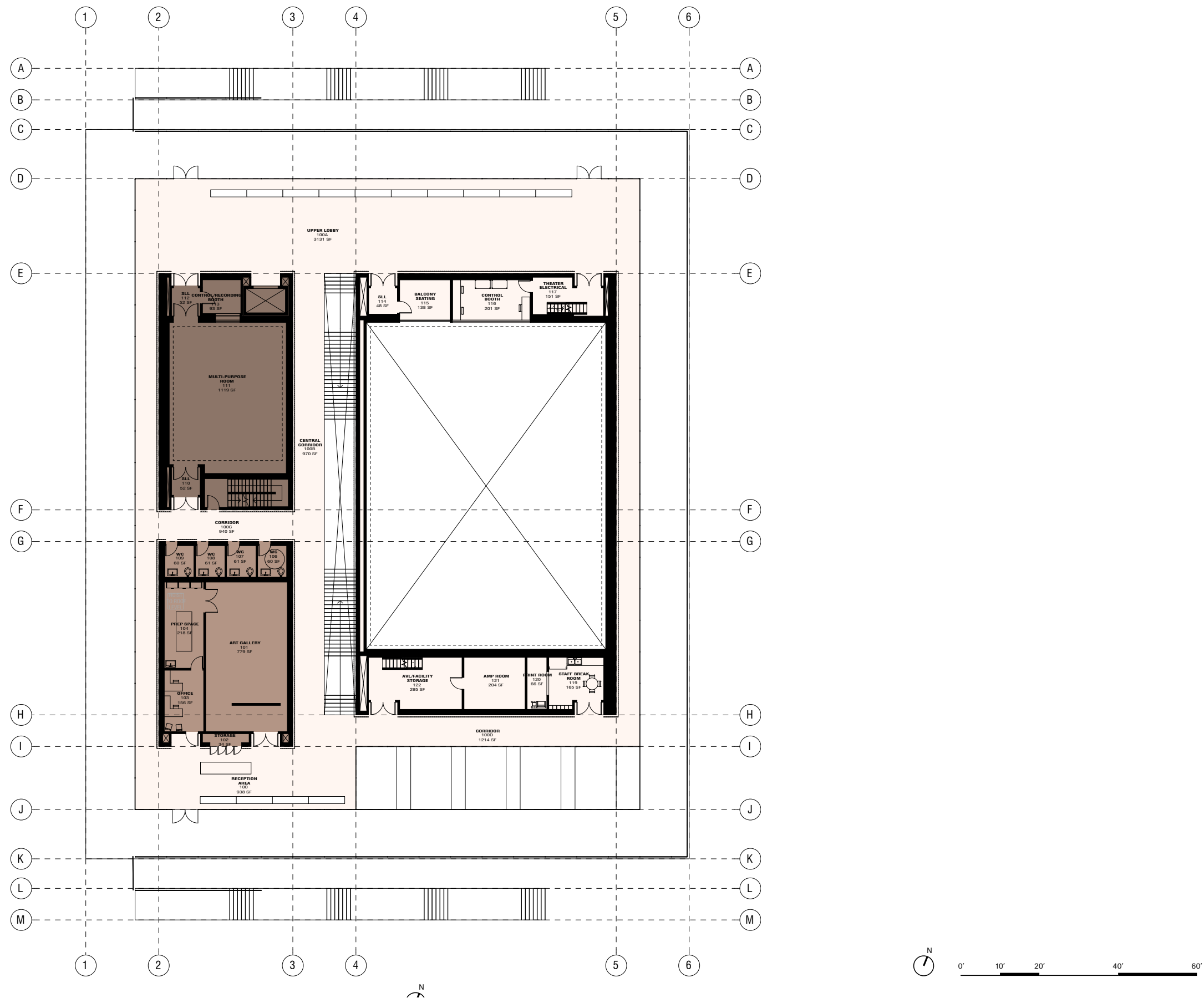
Finish Floor Elevation = 606'



Building Plans

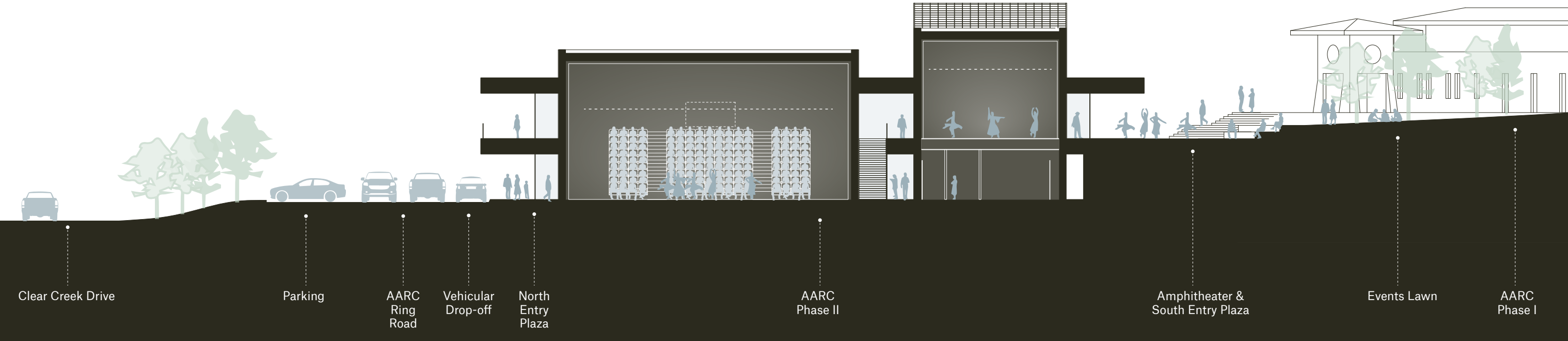
Level 1

Finish Floor Elevation = 620'



Site

Building Height - Section



Massing + Material

Shou Sugi Ban

Material Narrative

“Shou sugi ban” roughly translates to “burnt cedar board” in Japanese, and it was developed by carpenters seeking a unique finish that would improve the durability of Japanese cedar (*Cryptomeria japonica*).

Shou Sugi Ban is an ancient Japanese architectural technique that was used to preserve wood by charring the surface with a hot flame. The process involved charring the wood, cooling it, cleaning off any soot or burnt debris on the surface, and finally finishing the boards with an oil.

With fire treatment, Shou Sugi Ban enhances durability and is a natural means of preserving wood without chemicals, paints and other surface treatments.

Shou Sugi Ban can be applied in both exterior and interior settings.



Shou Sugi Ban

Material Narrative

Pros

- Local production and craftsmen
- Weathers gracefully
- Natural fire resistance
- Shou Sugi Ban is very durable, it protects wood from sun damage, termites, rotting, water damage
- Natural variety in the material
- Sustainability of using a local natural renewable resource
- Shou Sugi Ban does last longer without maintenance than non-charred timber. (Maintenance includes wash, tighten and re-oil)

Cons

- Possibility of inconsistent finish
- Labor intensive process
- Interior and exterior weathering will vary
-

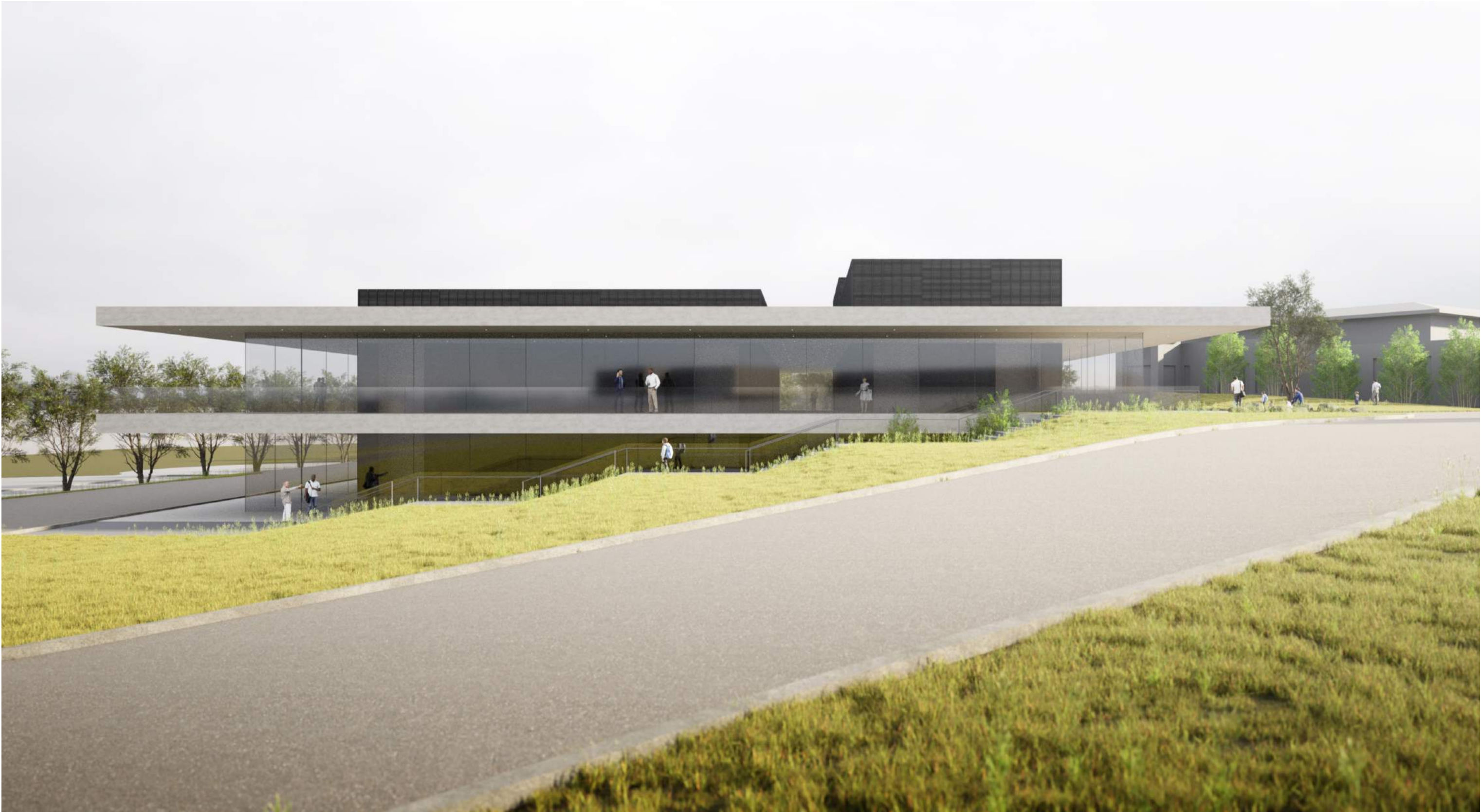
Durability: approx. 50+ years

Cost: \$65 / SF (installed)



Exterior View - Shou Sugi Ban

View from Cameron Road



Exterior View - Shou Sugi Ban

View from Cameron Road



Exterior View - Shou Sugi Ban

View from Northeast Corner



Exterior View - Shou Sugi Ban

View of Plaza between Phase I + Phase II



Interior View - Shou Sugi Ban

View of Terrace from Reception Area



Exterior View - Shou Sugi Ban

View from South Lawn



Exterior View - Shou Sugi Ban

View from South Lawn



Schematic Cost Estimate

Asian American Resource Center Phase II (Performing Arts Center)

Construction Cost (Owner Controlled Insurance, Permits)	\$	38,800,000
Consultant Fees (A/E, Commissioning, Surveying)	\$	4,220,000
Testing (Geotechnical Report, Construction Testing)	\$	200,000
Equipment + Furnishings	\$	1,300,000
Art in Public Spaces	\$	780,000
Interdepartmental Fees + Project Contingency	\$	8,640,000
Total	\$	53,940,000

TRAHAN ARCHITECTS

NEW ORLEANS / NEW YORK

CONTACT

Kevin Thomas

kthomas@trahanarchitects.com

646 661 6633