

Equitable Transit-Oriented Development

ETOD Policy Plan

Zoning and Platting Commission- December 2022



Purpose of the Plan

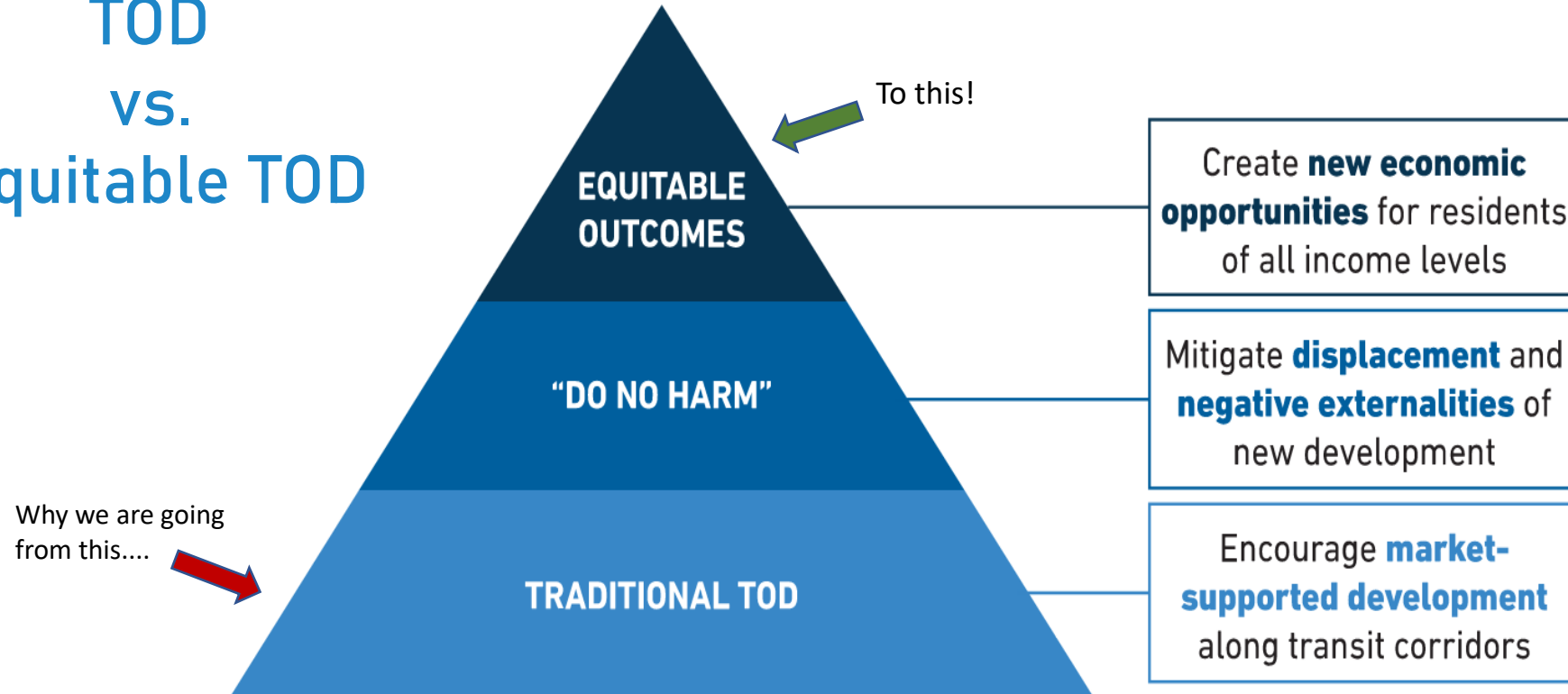
Provide a **comprehensive** framework to help the Austin community ensure that future development around the Project Connect transit system supports residents of **all incomes and backgrounds**, **especially those who have been disproportionately burdened** by past transportation and land use decisions.

ETOD Resolution 20210610-093

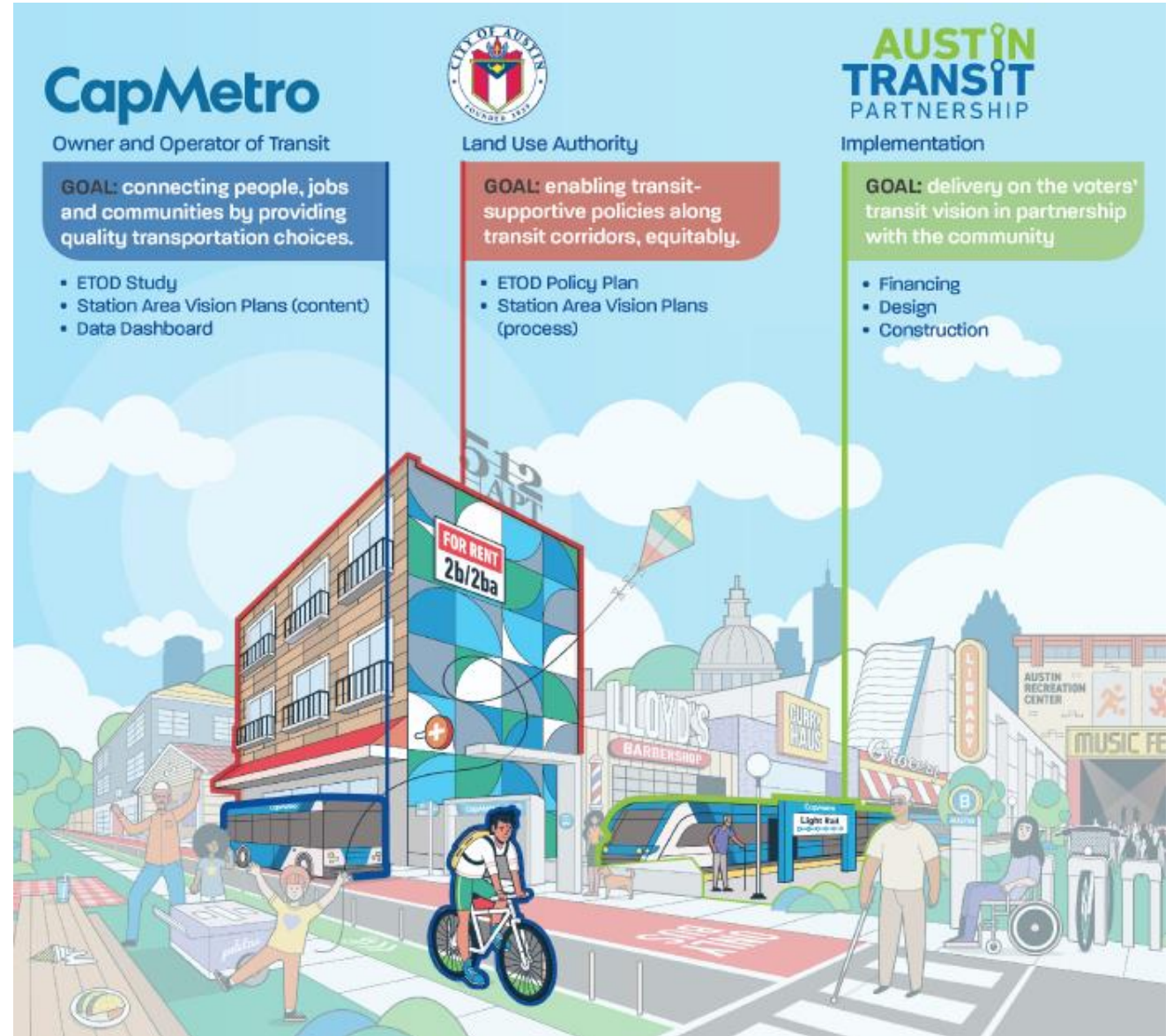
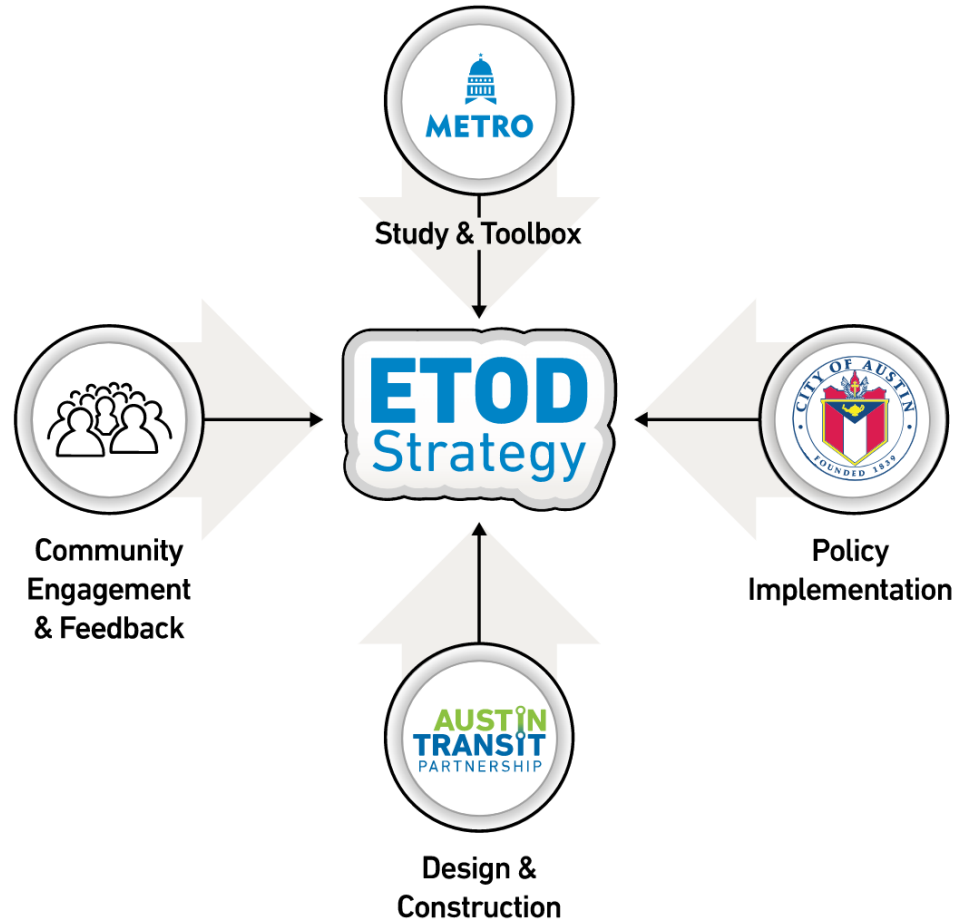
- Prioritization of equitable outcomes
- Categorization of TODs by tiers using context-sensitive criteria
- Anti-displacement strategies
- Preservation of existing and creation of affordable housing
- Creation of market-rate housing
- Compact, connected and transit-supportive
- Mix of land uses
- Codify community benefits

What is ETOD?

TOD VS. Equitable TOD



The ETOD Team



CapMetro

Owner and Operator of Transit

GOAL: connecting people, jobs and communities by providing quality transportation choices.

- ETOD Study
- Station Area Vision Plans (content)
- Data Dashboard



Land Use Authority

GOAL: enabling transit-supportive policies along transit corridors, equitably.

- ETOD Policy Plan
- Station Area Vision Plans (process)

AUSTIN TRANSIT PARTNERSHIP

Implementation

GOAL: delivery on the voters' transit vision in partnership with the community

- Financing
- Design
- Construction

Austin's ETOD Journey



ETOD Study

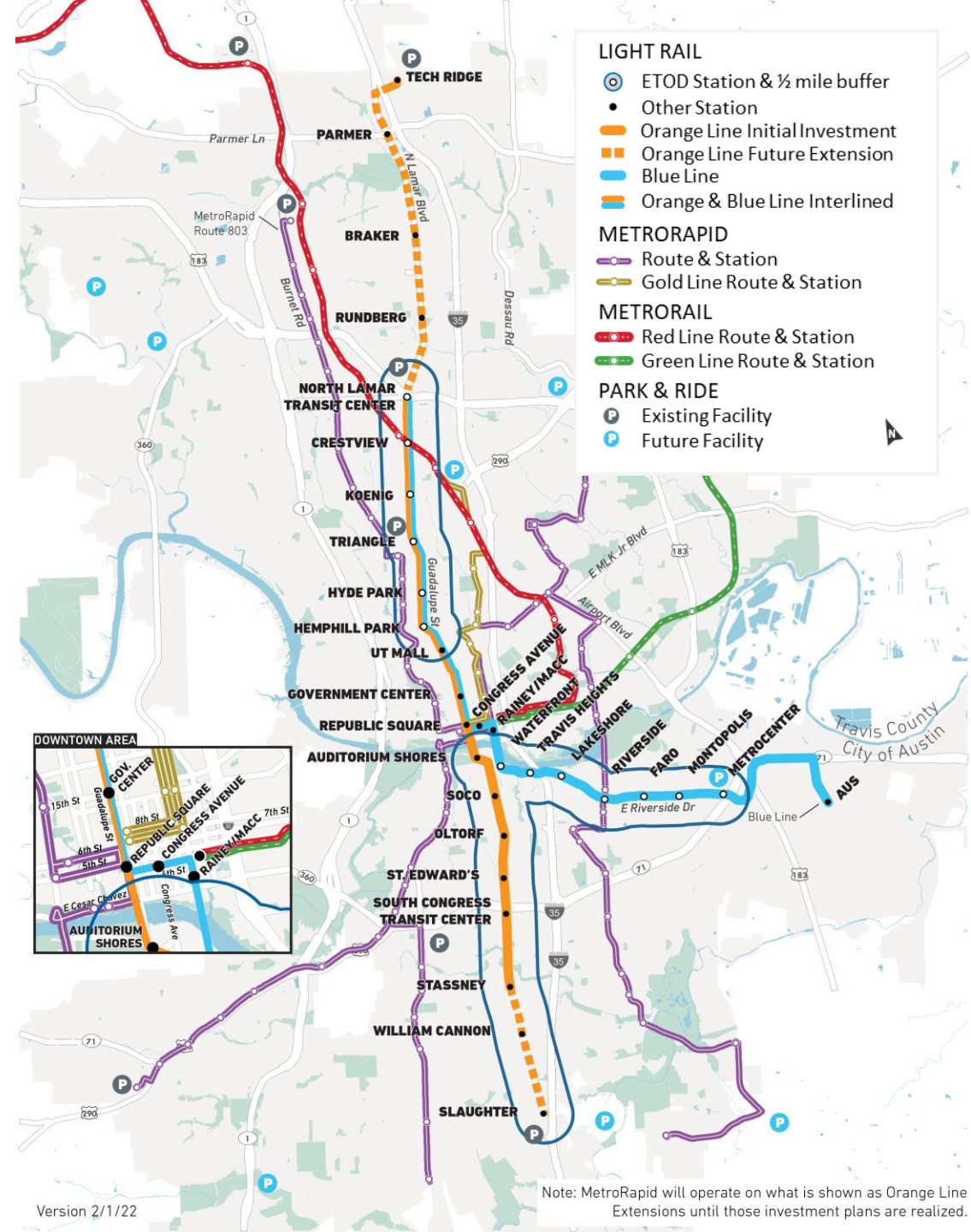
- **\$1.65 million** in Federal Transit Administration (FTA) TOD planning grants
- **98 stations** across all Project Connect lines

1

Quantitative analysis of existing conditions within ½ mile of station areas

2

Qualitative data collection through robust community engagement



Engagement Touchpoints



Community Presentation

Large format meetings to present project milestones



CAC Working Group Briefings

Monthly meetings, Ongoing guidance throughout project and major milestones



Tabling/Intercept Surveys

In-person events to target specific neighborhoods or demographics



Focus Groups & One-on-ones

Guided discussions with groups to identify vision and needs and to build consensus amongst stakeholders



Stakeholder Presentations

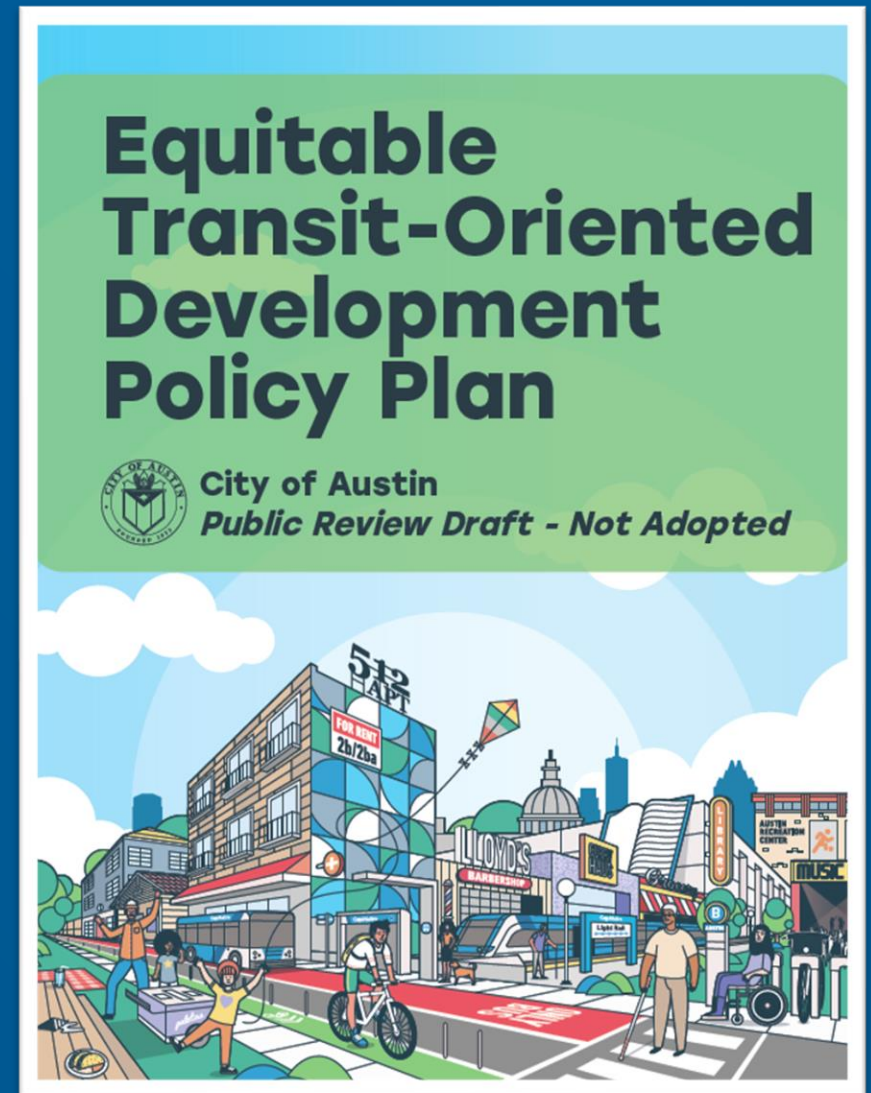
Presentations with stakeholder groups to educate participants on the process and vision of the ETOD Study



Community Connectors

Paired and trained individuals who does in-depth outreach in their communities

ETOD Policy Plan Contents



ETOD Project Goals



Enable All Residents to Benefit from Safe, Sustainable, & Accessible Transportation



Help to Close Racial Health & Wealth Gaps



Preserve and Increase Housing Opportunities That are Affordable & Attainable



Expand Access to High-Quality Jobs & Career Opportunities



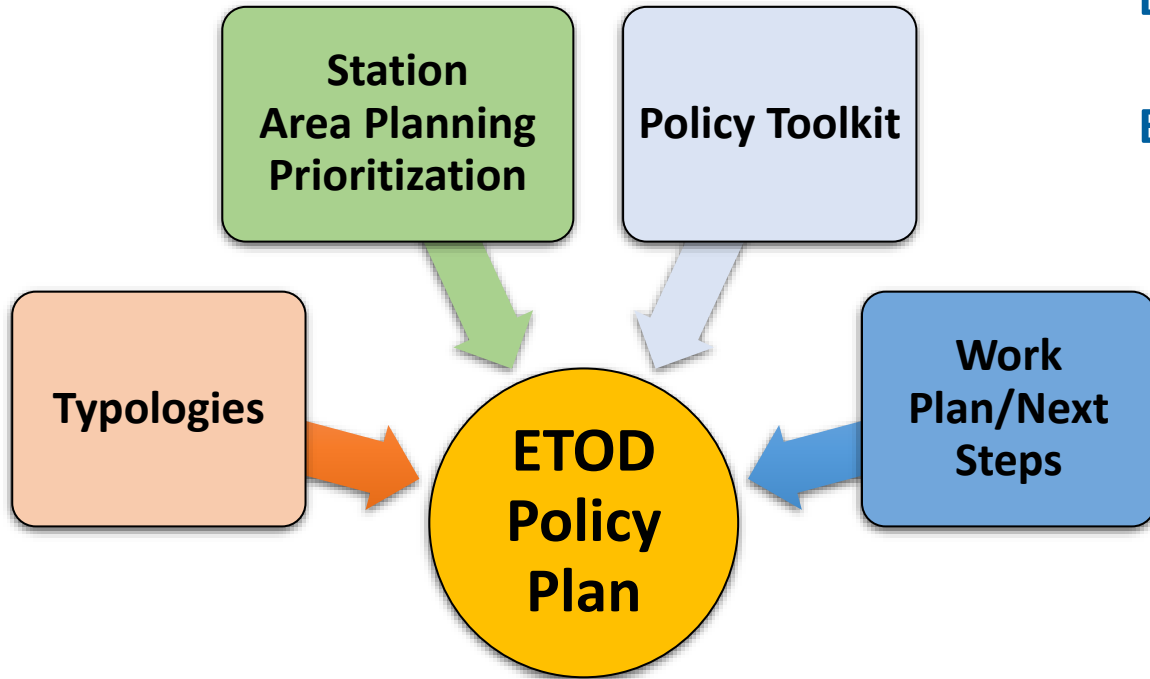
Support Healthy Neighborhoods That Meet Daily Needs



Sustain Austin's Diverse Cultural Heritage & Small Businesses

1. Enable All Residents to Benefit from Safe, Sustainable, and Accessible Transportation
2. Help to Close Racial Health and Wealth Gaps
3. Preserve and Increase Housing Opportunities That are Affordable and Attainable
4. Expand Access to High-Quality Jobs and Career Opportunities
5. Support Healthy Neighborhoods That Meet Daily Needs
6. Expand Austin's Diverse Cultural Heritage and Small, BIPOC-owned and Legacy Businesses

ETOD Policy Plan

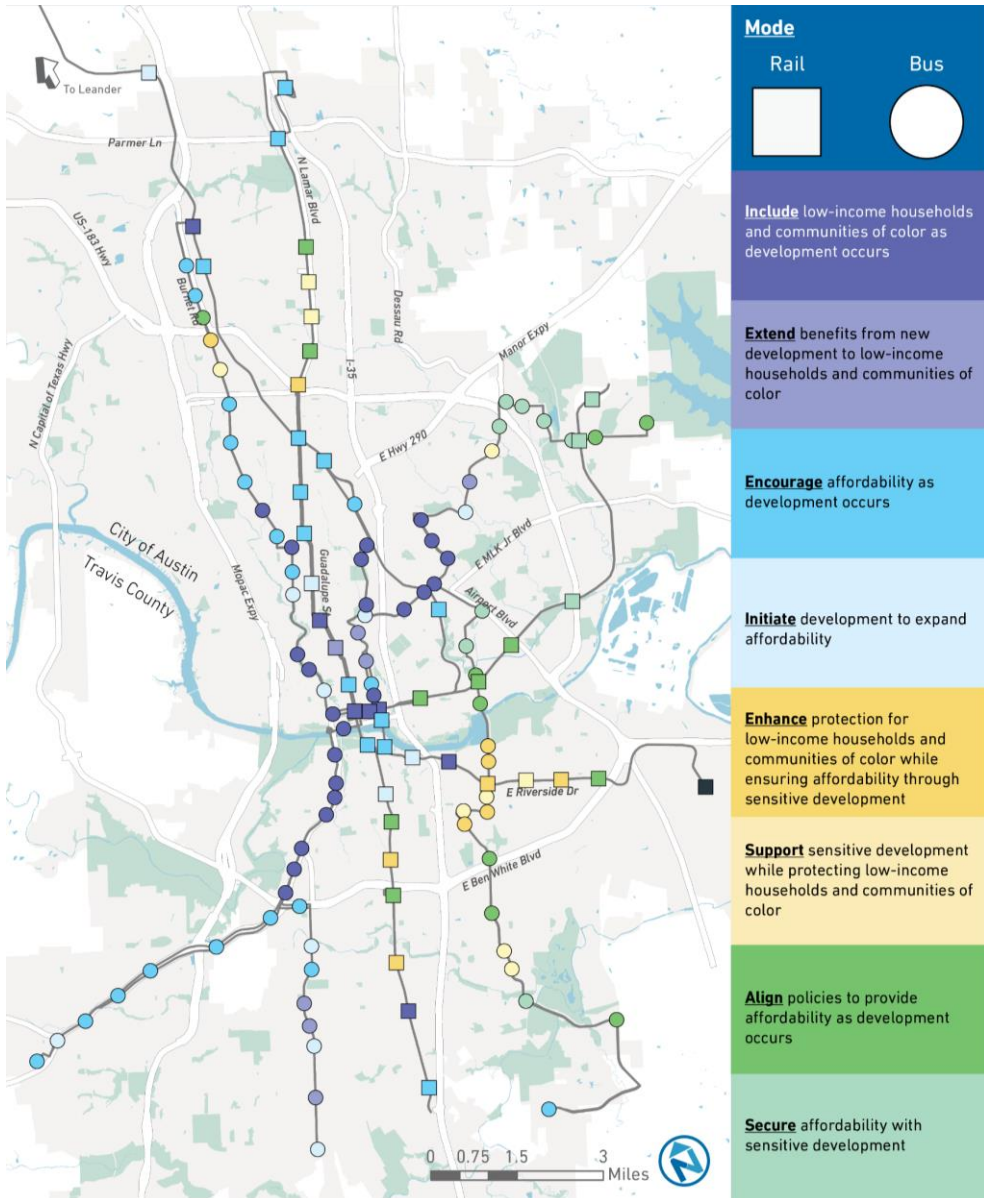


ETOD Policy Plan builds on the FTA-funded ETOD study

ETOD Policy Plan includes:

- ETOD Goals
- A snapshot of how current TODs are performing (MLK Station, Plaza Saltillo, Crestview Station)
- Station Area Typologies and Planning Prioritization
- Equity Based Policy Toolkit with Success Metrics
- Work Plan for station area specific planning and regulatory changes in the short-, medium-, and long-term

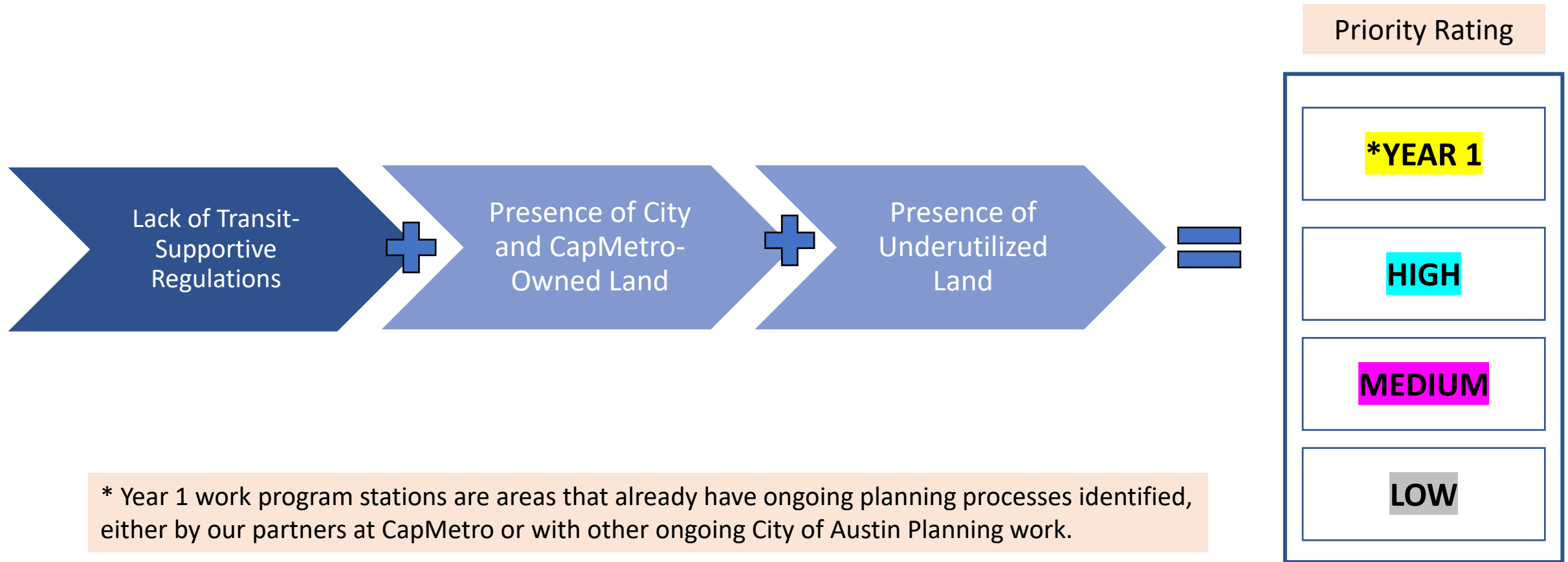
ETOD Typologies



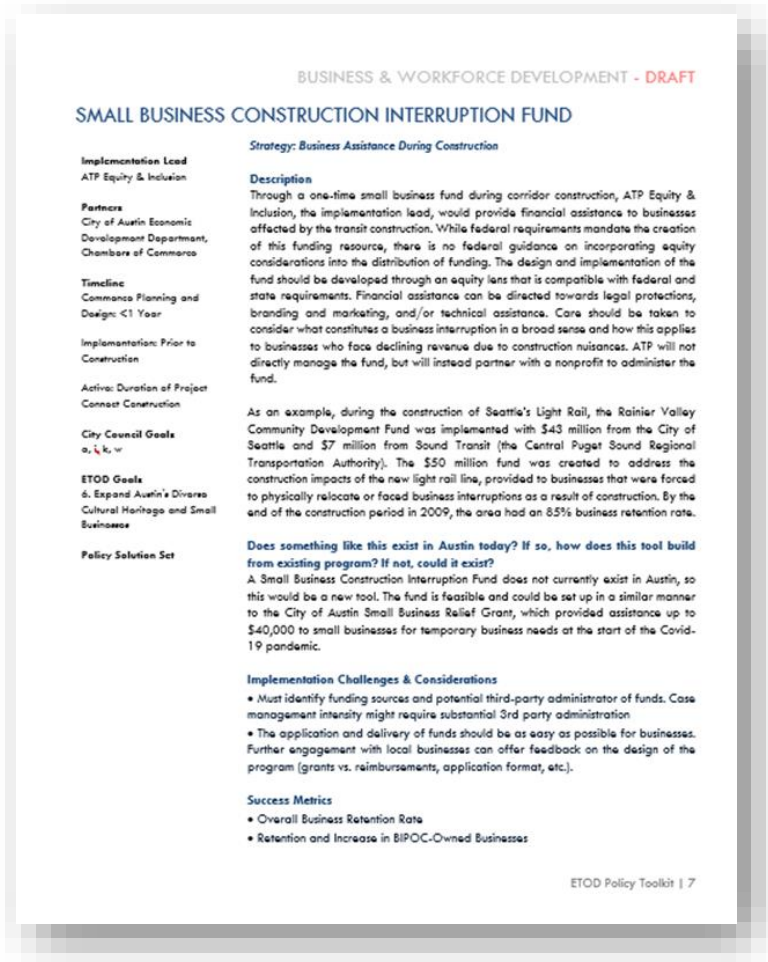
If a station has...	...and is...	...and has experienced...
More Residents Today	Historically Exclusionary or Low Displacement	Rapid Change
More Residents Today	Historically Exclusionary or Low Displacement	Slow Change
Fewer Residents Today	Historically Exclusionary or Low Displacement	Rapid Change
Fewer Residents Today	Historically Exclusionary or Low Displacement	Slow Change
More Residents Today	Vulnerable to or Experiencing Displacement	Rapid Change
More Residents Today	Vulnerable to or Experiencing Displacement	Slow Change
Fewer Residents Today	Vulnerable to or Experiencing Displacement	Rapid Change
Fewer Residents Today	Vulnerable to or Experiencing Displacement	Slow Change

ETOD Station Area Planning Prioritization

Priorities are categorized by light rail + commuter rail OR bus rapid station areas



ETOD Policy Toolkit



POLICY TOOL	
Implementation Lead	Agency or organization
Partners	Additional agencies or organizations who can support in tool implementation
Timeline	Commence Planning and Design: Within 1 Year, 1-2 Years, 3-4 Years, 5+ Years Implementation Begins: Prior to Transit Construction, During Transit Construction Active: Duration of Transit Construction, Ongoing, Other Time Period
City Council Goals	Identifies the relevant City Council ETOD goals the tool addresses
ETOD Goals	Identifies the relevant ETOD Policy Plan goals the tool addresses
Description of the Tool	Provides a summary of what the recommended tool is
Examples of existing programs in Austin, if any	Discusses if an existing program/tool exists in Austin. If not, similar programs that may be used to align with ETOD goals
Implementation Challenges and Considerations	This section outlines financial, legal and programmatic considerations for the Implementation Lead in planning and designing the tool
Success Metrics	A set of metrics that will be further developed by the Implementation Lead to measure the success of the tool over time

ETOD Work Plan

Immediate Work Program

2022-2024

- ☐ Station Area Vision Planning for 6 station areas
- ☐ Regulatory changes to support ETOD citywide
- ☐ ETOD implementation lead equity financing and programmatic planning support
- ☐ Amend ETOD Policy Plan to the Imagine Austin Comprehensive Plan
- ☐ Develop an Equity Scorecard to evaluate proposed ETOD private development projects

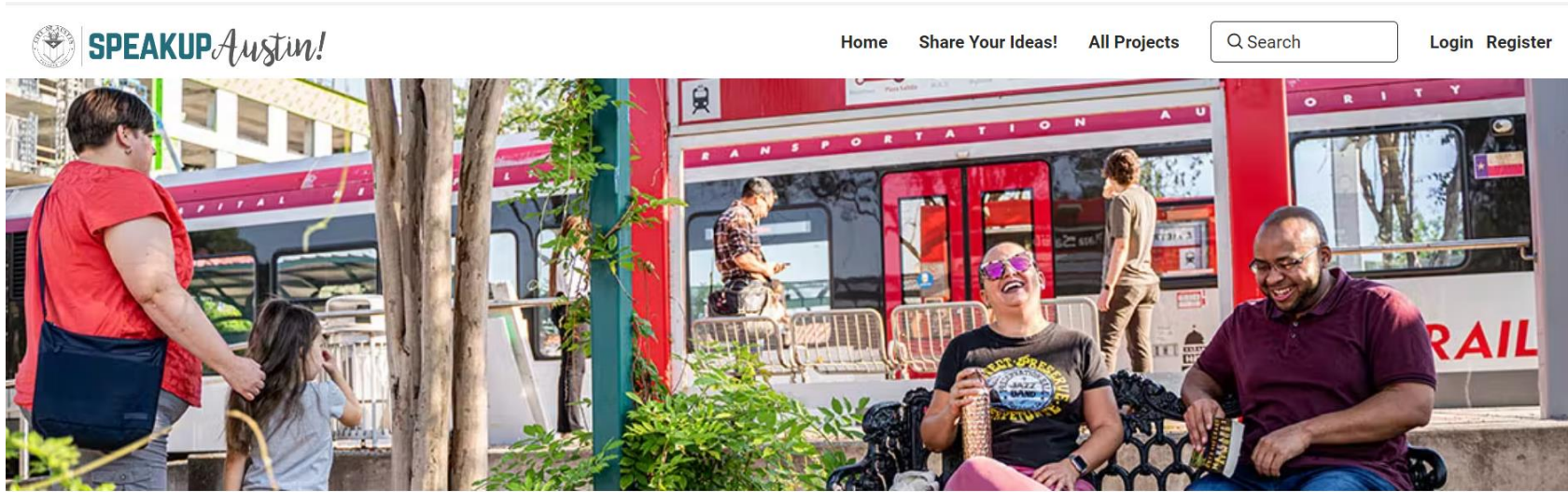


Ongoing (Year 2 and Beyond)

2025-Ongoing

- ☐ Station Area Planning for 6-10 stations
- ☐ ETOD implementation lead equity financing and programmatic planning support (2nd iteration)
- ☐ Assessment of year 1 station area plans using policy toolkit success metrics
- ☐ Monitor performance of ETOD station areas in meeting ETOD goals using policy toolkit success metrics
- ☐ Continued public engagement surrounding station area planning

Get Involved!



Comment at City Council's 12/8 meeting!

Send us a message: ETOD@austintexas.gov

Stay tuned for future engagement efforts during plan implementation!



Questions?

Erica.Leak@austintexas.gov

Warner.Cook@austintexas.gov

