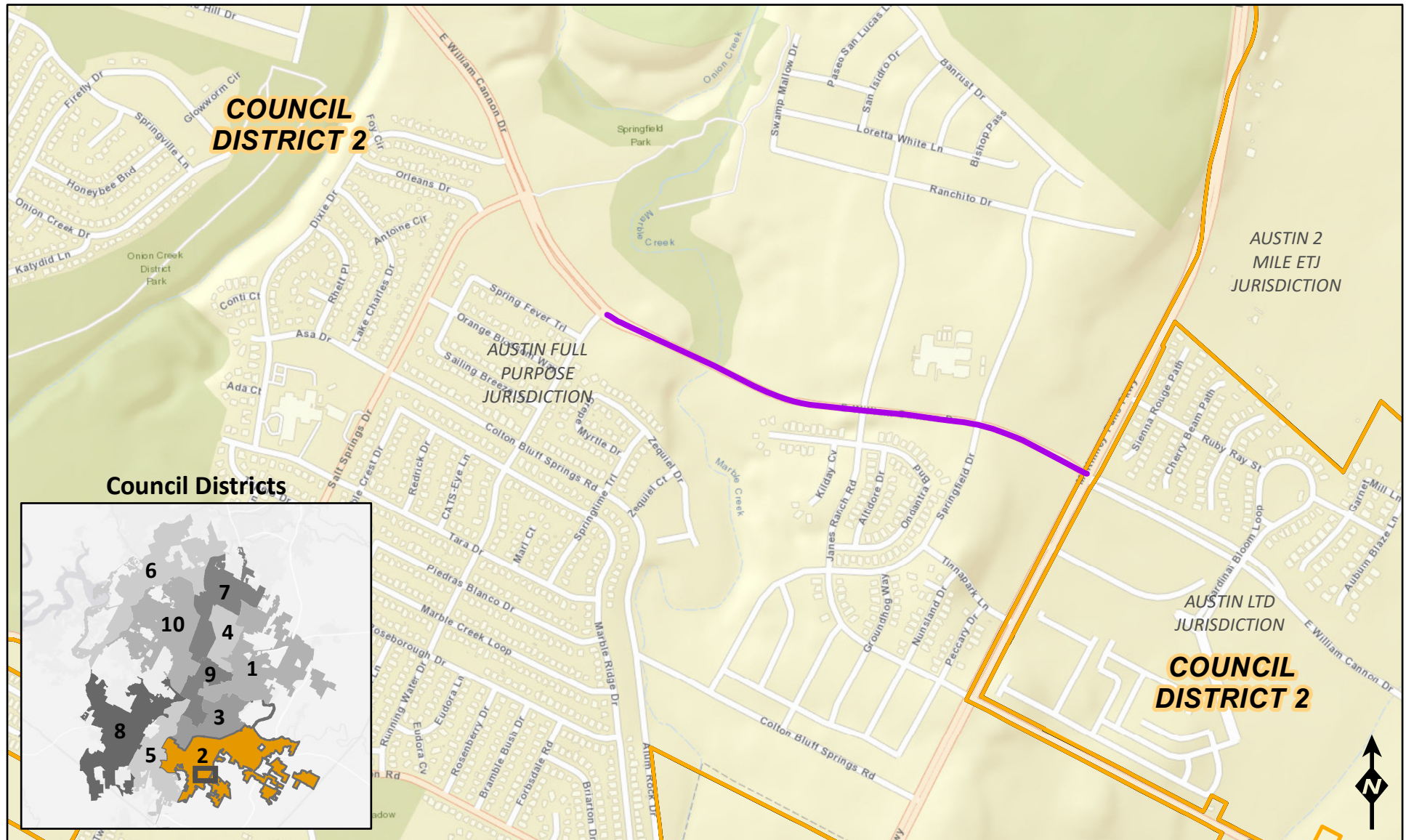


PROJECT LOCATION: WILLIAM CANNON DRIVE CORRIDOR

Running Water Dr. to McKinney Falls Pkwy.

This product is for informational purposes and may not have been prepared for or be suitable for legal, engineering, or surveying purposes. It does not represent an on-the-ground survey and represents only the approximate relative location of property boundaries. This product has been produced by the Corridor Program Office for the sole purpose of geographic reference. No warranty is made by the City of Austin regarding specific accuracy or completeness. Created on 10/18/2022 by HLindsey.



Project Limits

City Council Districts

1 inch = 1,000 feet

Running Water Dr. to McKinney Falls Pkwy. City Council Districts

