

Water Forward 2024 Population and Employment Projections

Austin
WATER



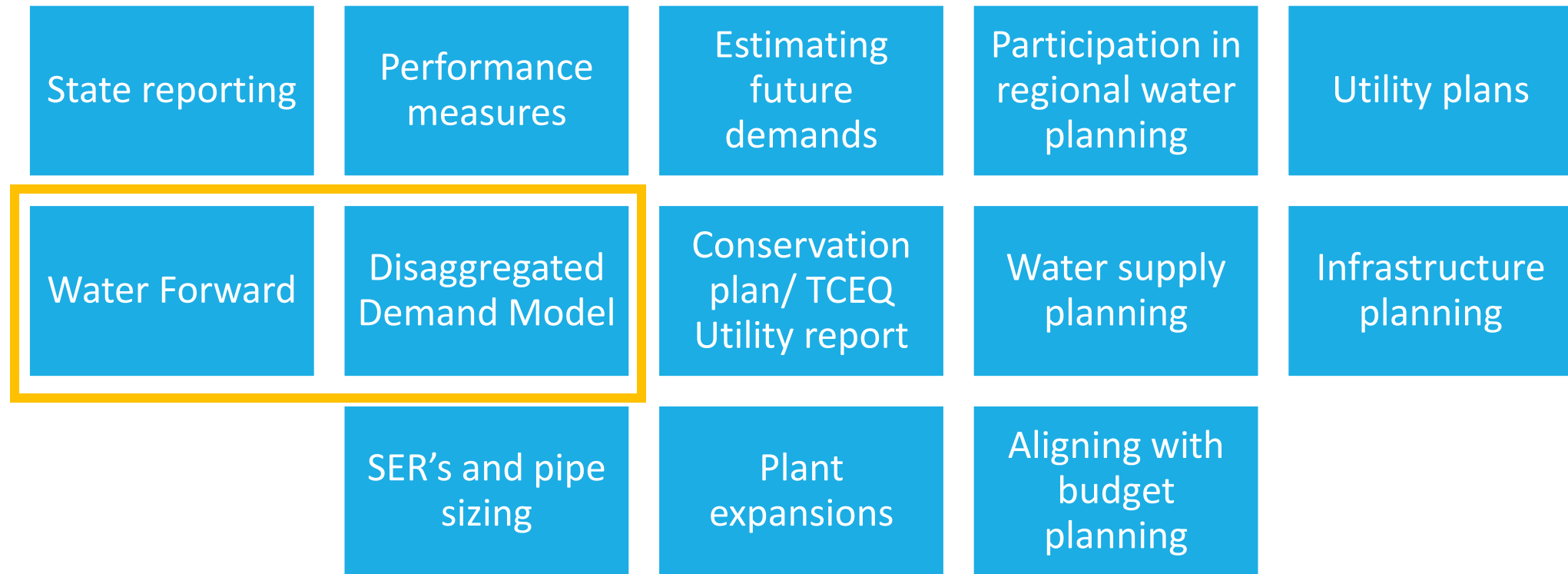
Agenda

- How Population and Employment Projections are Used in Water Forward 2024
- Process to Develop 2020 Population and Employment Estimates
- Process to Develop 100-year Projections
- Next Steps

How Population and Employment Projections are Used in Water Forward 2024



AW Population & Employment Estimates are used in:



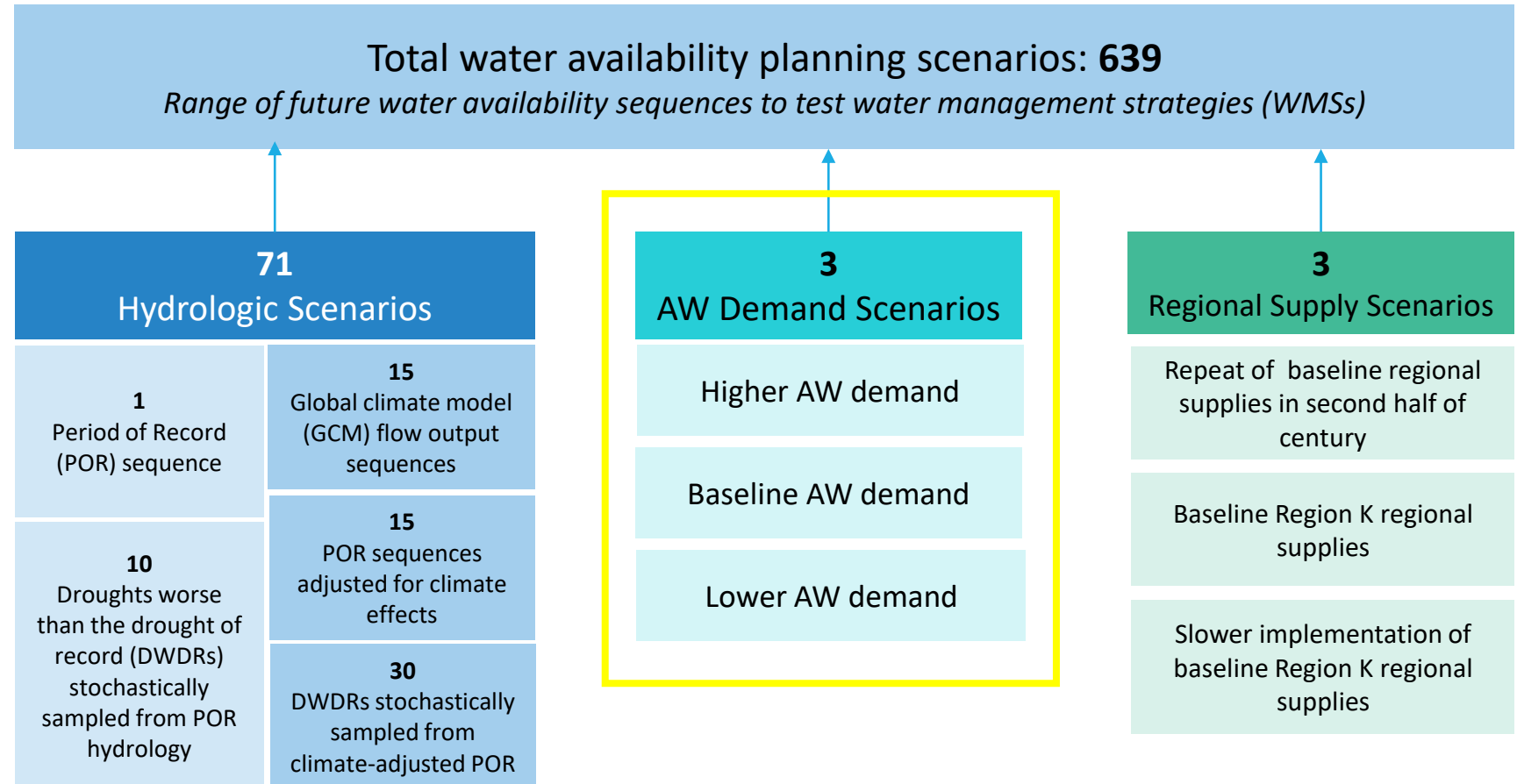
Pop/Emp Projections in WF24

- 100-year strategic planning
 - Greater accuracy may be possible to attain for the first 10-20 years
 - Greater uncertainty in terms of geographic resolution and distribution for later years
- Projections in this Water Forward update will include use of ranges

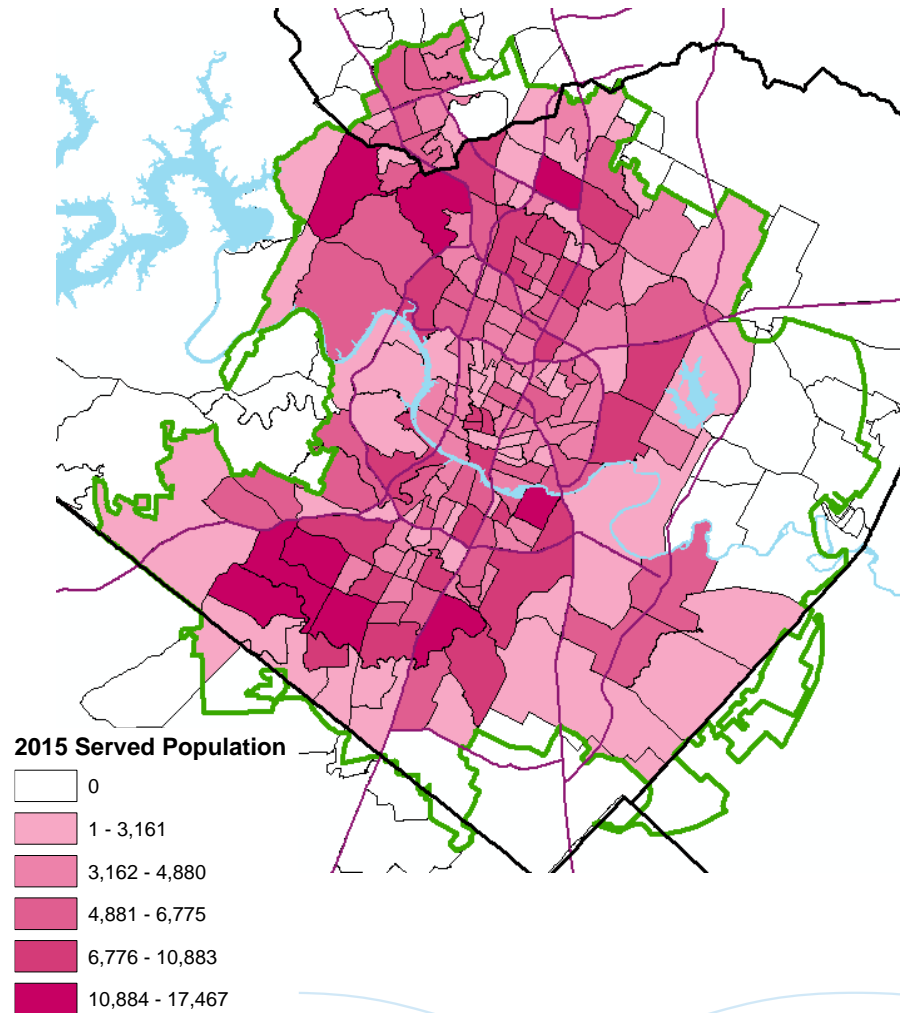


Overview of planning scenarios

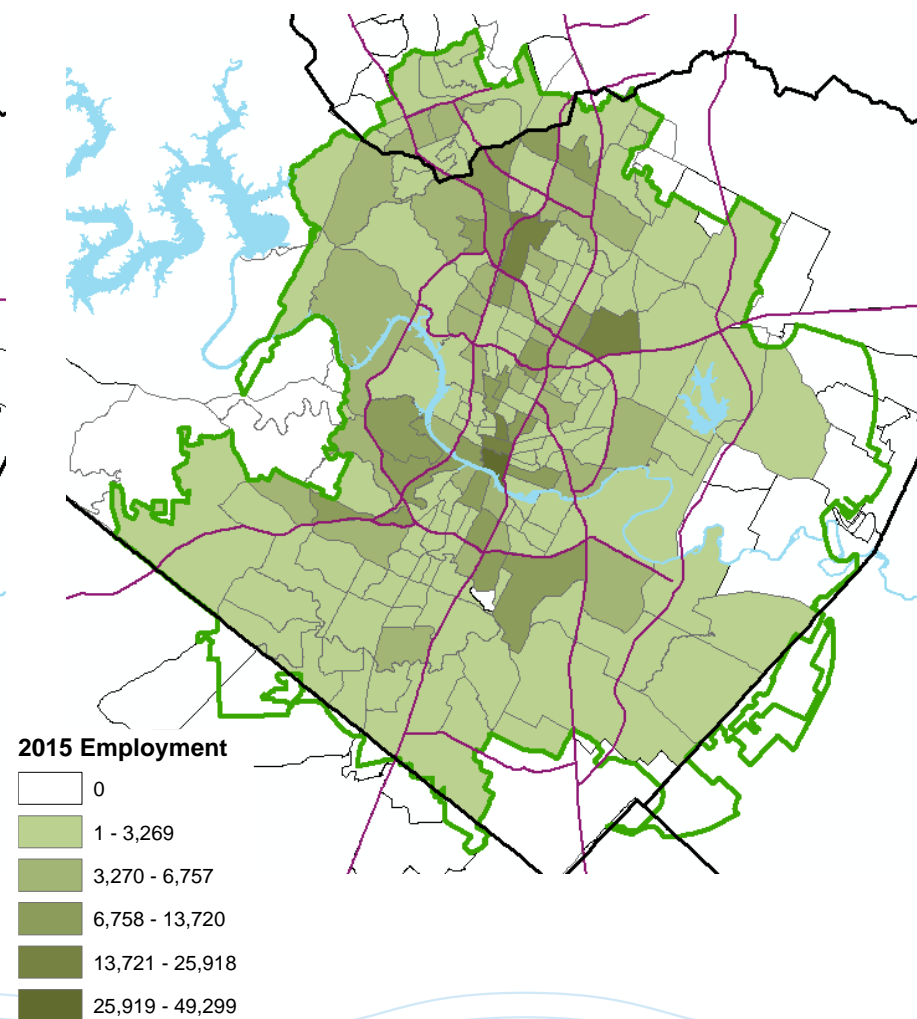
- Water availability planning scenarios allow us to plan for a range of possible future conditions.
- The scenarios do not represent the probability of any particular outcome.
- Historical population and employment show a huge range of growth rates; use the data to establish an envelope of plausible demands.
- 5-year updates allow us to adapt to changing conditions.



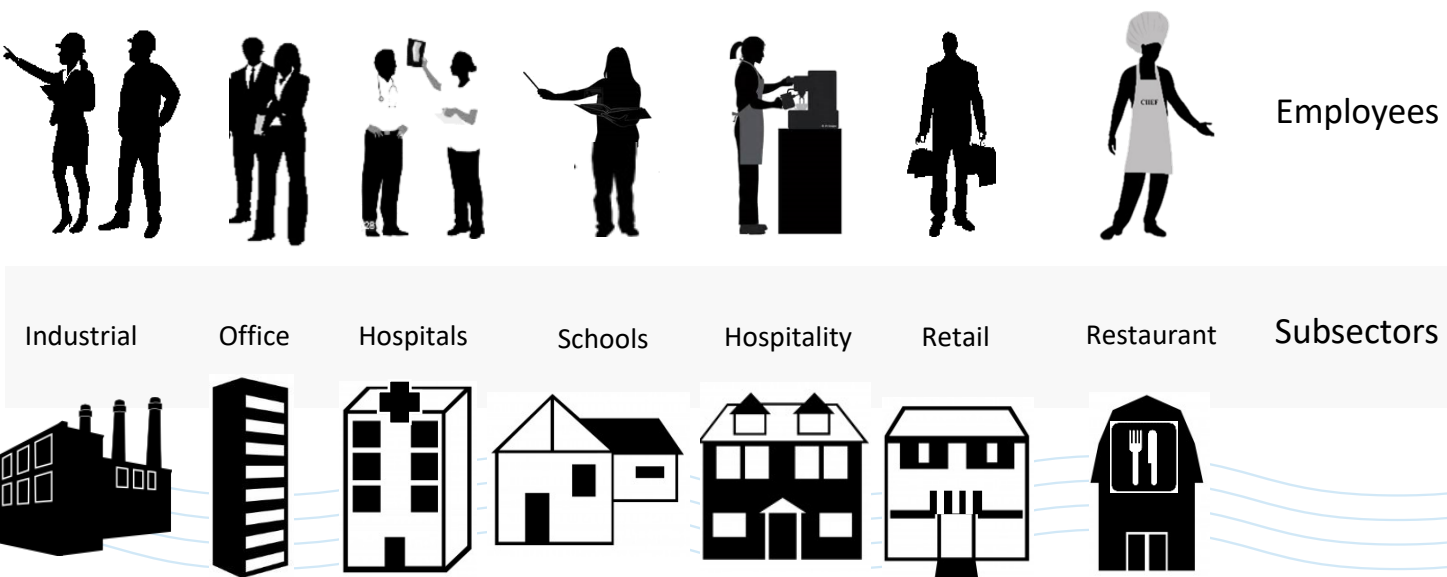
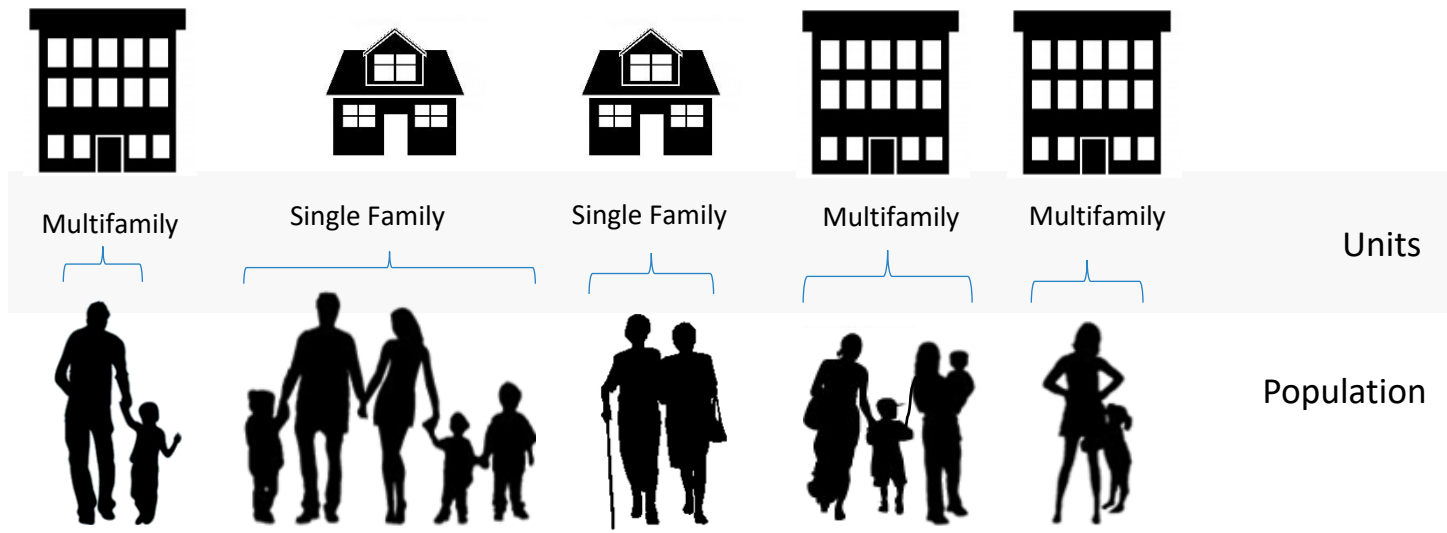
Pop/Emp Projections Used to Calculate Water Use Factors Among Demand Sectors



• Served Population Distribution



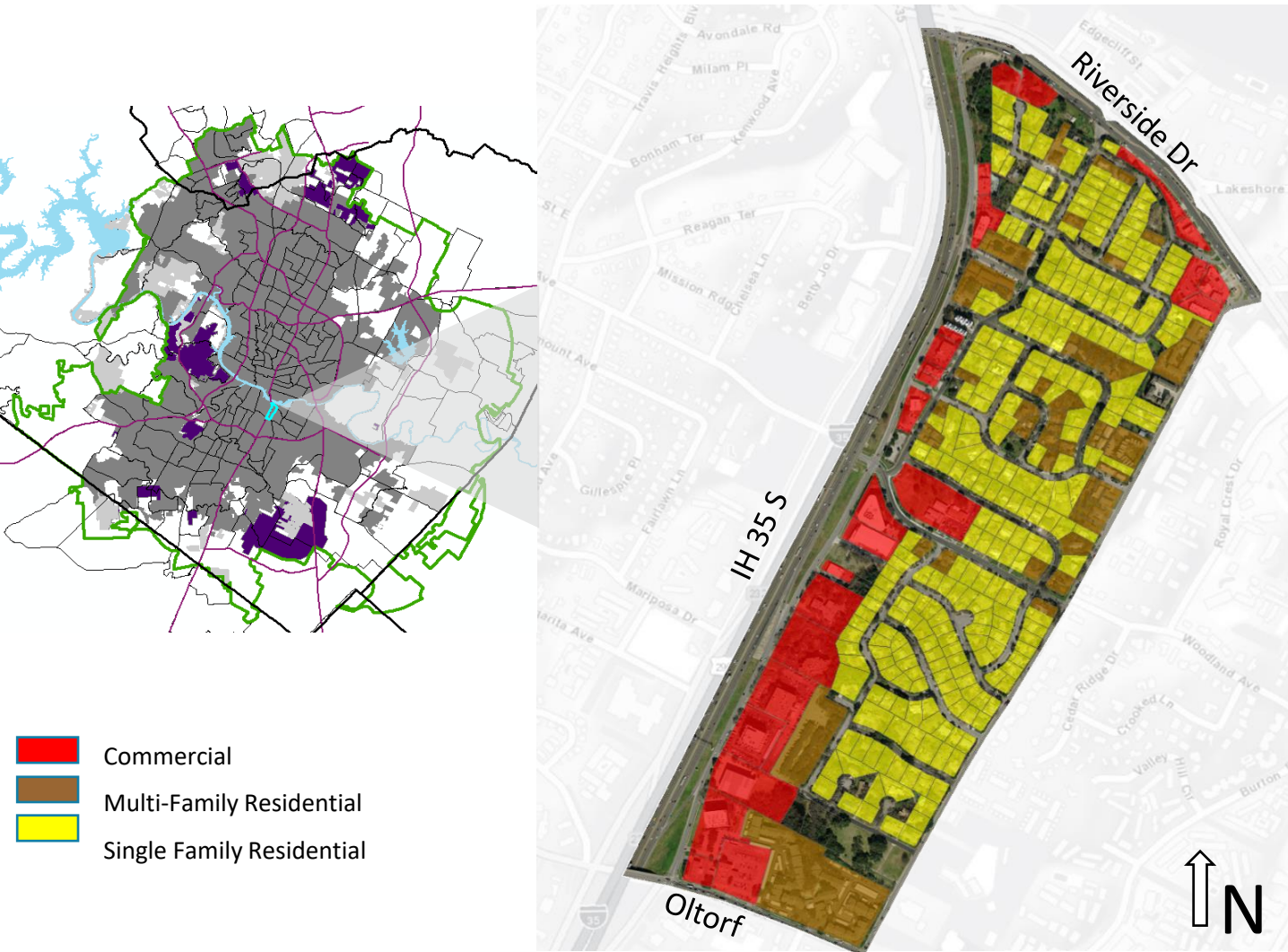
• Employment Distribution



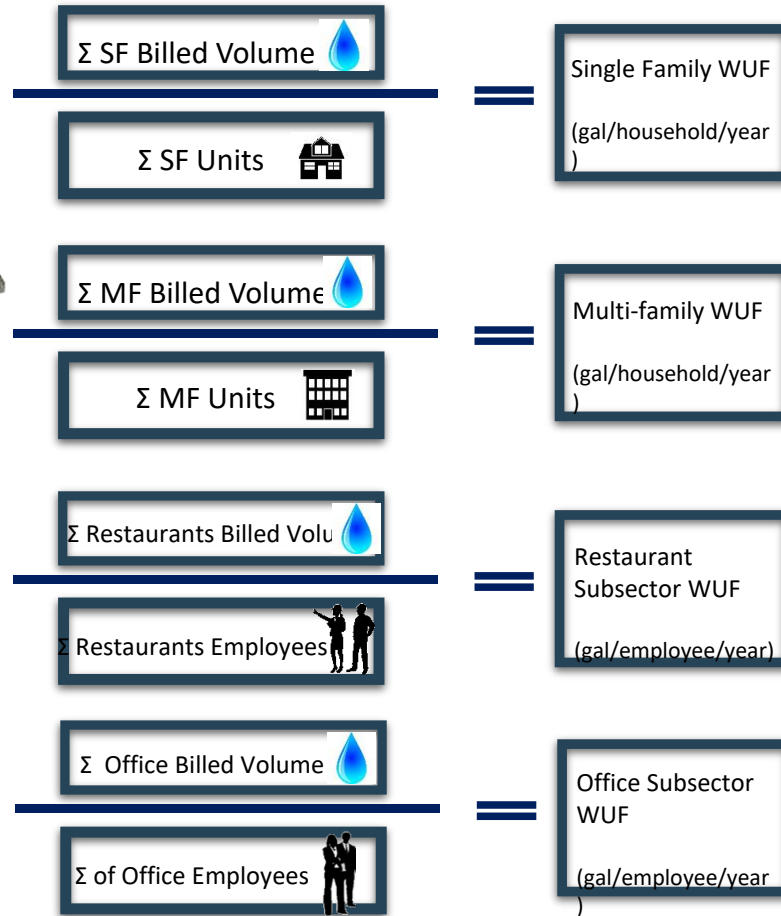
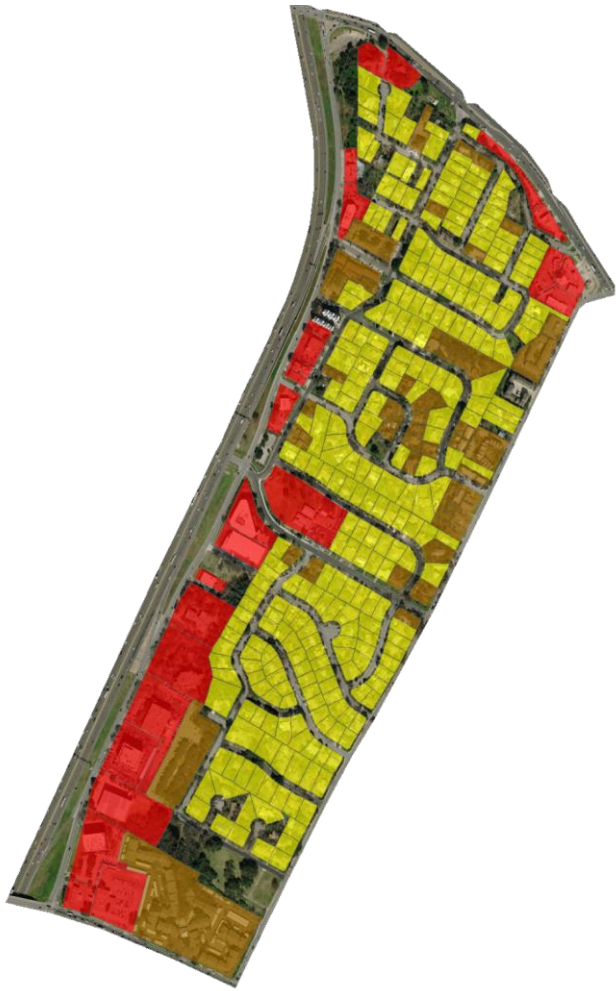
Translation to Units & Employment Sectors



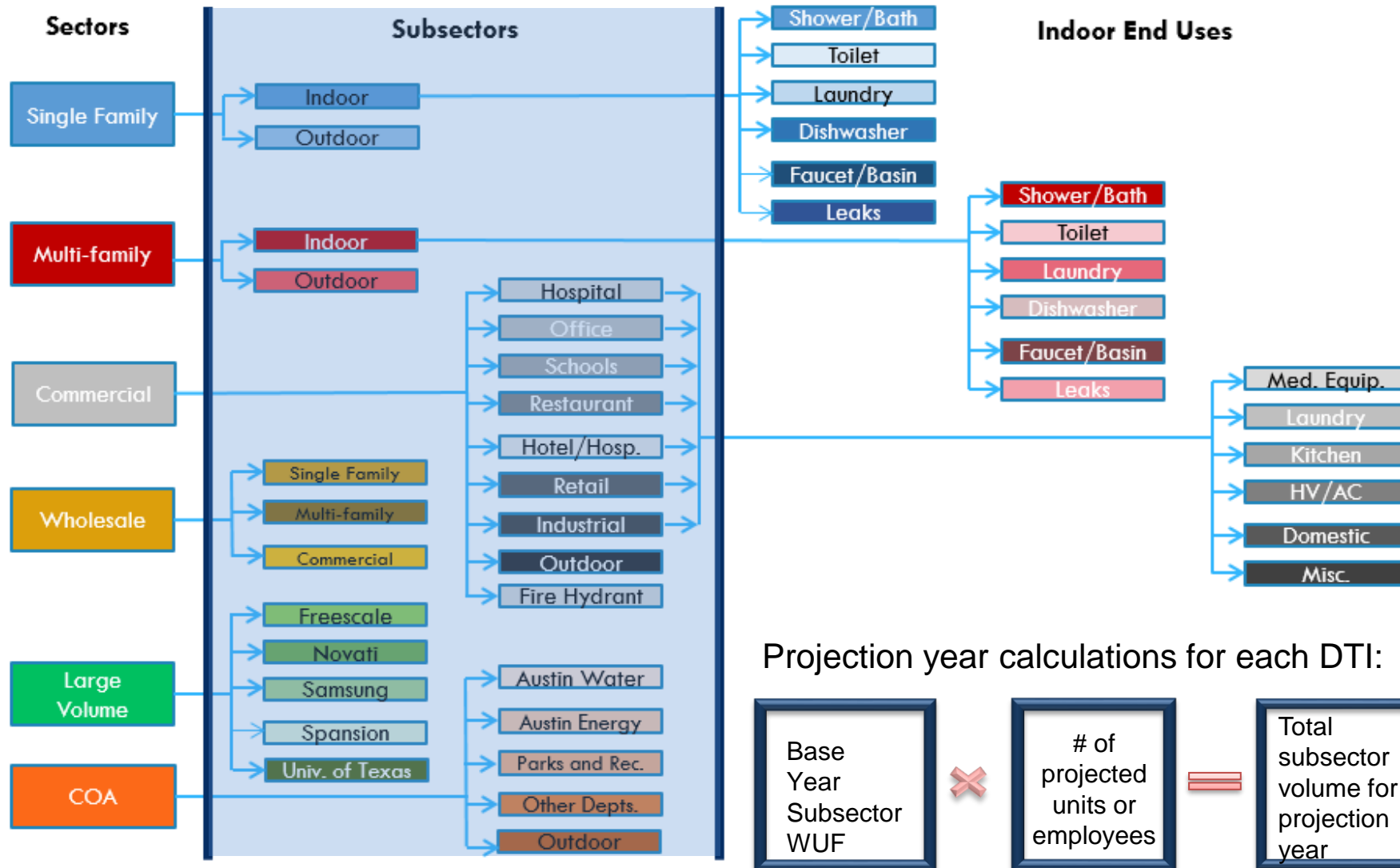
Water Use Factor Development



Water Use Factor (WUF) Calculations



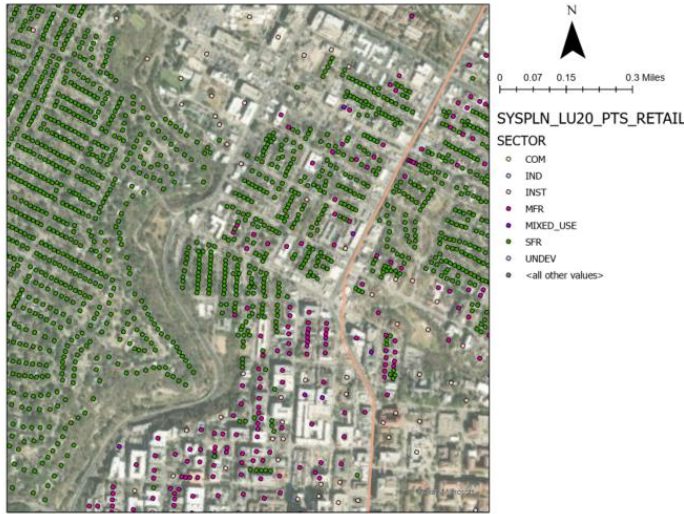
Base Year Demand Projections



Process to Develop 2020 Population and Employment Estimates



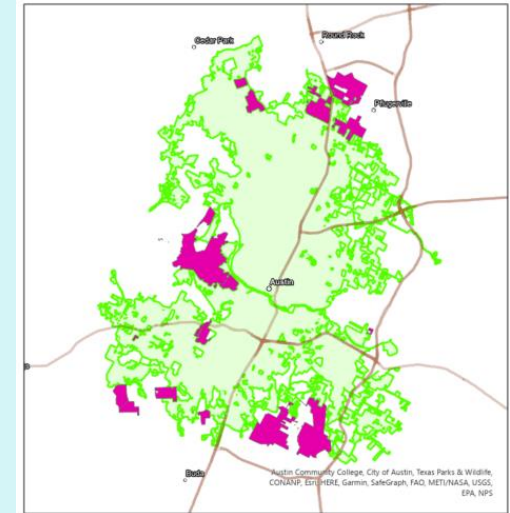
AW 2020 Population Estimates



- Parcel driven approach ($\text{Population} = \text{Units} * \text{PPH}$)
 - Unit counts** informed by Austin Water and Energy billing, county property appraisers, HPD, and COA Addresses databases
 - People per home (PPH)** from the 2020 Census Block data



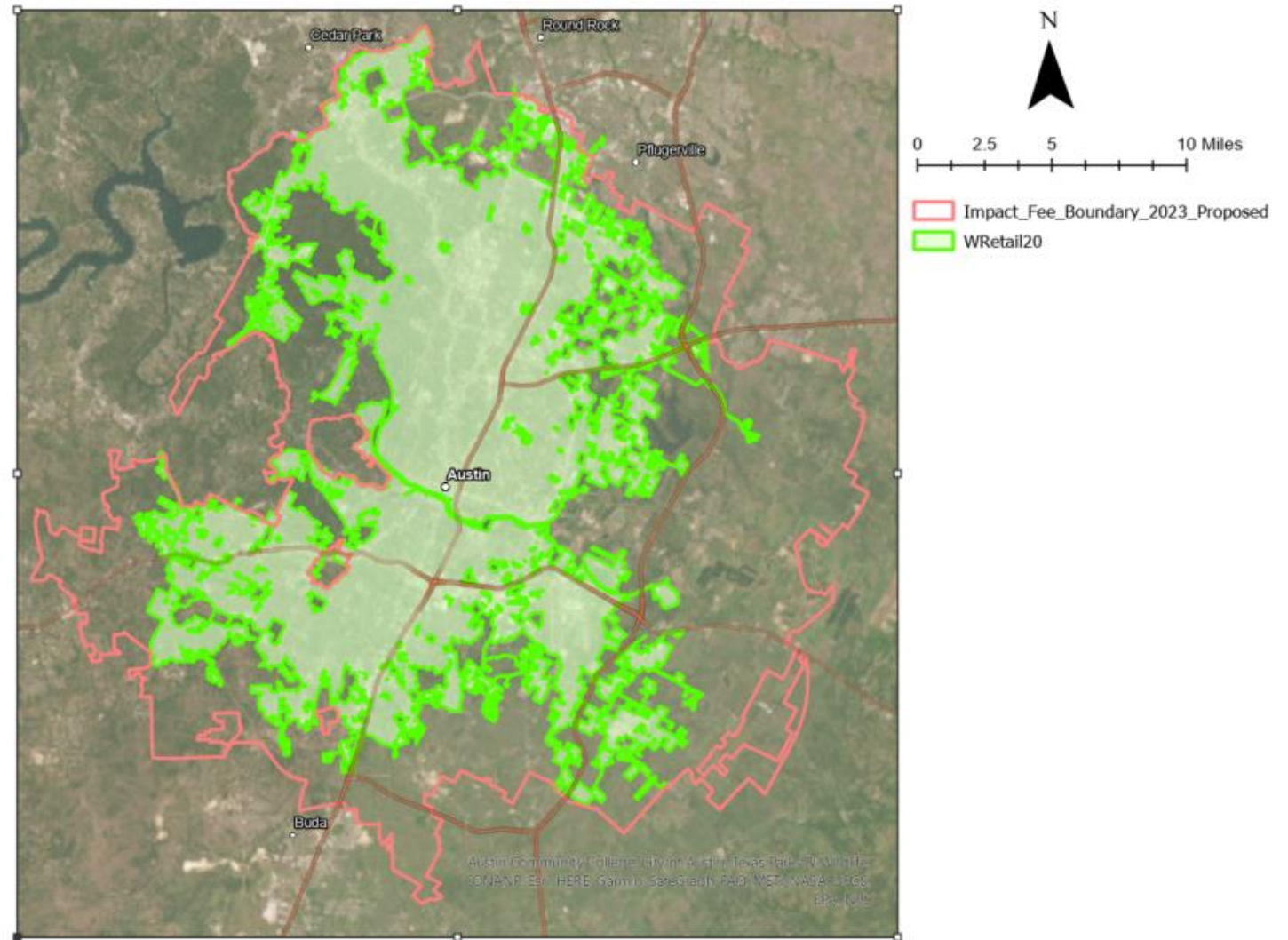
- Water use threshold for retail customers to help determine occupancy
 - Single-family residential: 30 gallons/home/day
 - Multi-family residential: Median gallons/home/day specific to the month, sector, and DTI used to determine the number of occupied units
 - Since this approach seeks to determine occupancy, **people per occupied home (PPOH)** from the Census was used



- Wholesale service area
 - Unit counts** informed by County Tax Districts, HPD, and COA Addresses databases where available
 - People per home (PPH)** from the 2020 Census Block data
 - Population did not include water use or estimates of occupancy outside of what is identified by the Census, and as such used **people per home (PPH)**

2020 Population Served Estimates

2020 Wholesale	49,704
2020 Retail	1,034,708
Total	1,084,412



	Total Population ¹	Sole-Source? ²	% Water Supplied from Austin Water ³	2020 Population Served ³
SouthWest Water Company - Windermere Utilities Inc.	16,518	no	0.1%	23
Creedmoor - Maha WSC	6,592	no	25.1%	1,861
City of Sunset Valley	702	no	96.1%	754
Village of San Leanna	512	no	38.4%	191
Wells Branch MUD	14,269	yes	n/a	14,269
North Austin MUD	9,757	yes	n/a	9,757
Northtown MUD	9,666	yes	n/a	9,666
Travis County WCID #10	7,635	yes	n/a	7,635
SouthWest Water Company - Mid-Tex Utilities Inc.	1,720	yes	n/a	1,720
City of Rollingwood	1,510	yes	n/a	1,510
Aqua America - Aqua Texas - Rivercrest Water System Inc.	1,027	yes	n/a	1,027
Marsha WSC	468	yes	n/a	468
Aqua America - Aqua Texas - Nighthawk	384	yes	n/a	384
High Valley WSC	211	yes	n/a	211
Shady Hollow MUD	164	yes	n/a	164
Aqua America - Aqua Texas - Morningside	69	yes	n/a	69
TOTAL	71,204			49,709

¹ Billing data and Census block estimates, 3/15/2022 Systems Planning staff

² Historical Water Use Survey Data, Texas Water Development Board, 2020 Total Water and Water from AW

³ Composite Population estimate; Systems Planning estimate and proportion of wholesale customer's population served when AW is not the sole source of water

Wholesale Customers

For wholesale customers with multiple water sources, population that AW serves is based on the portion of water supplied by AW (GPCD approach)

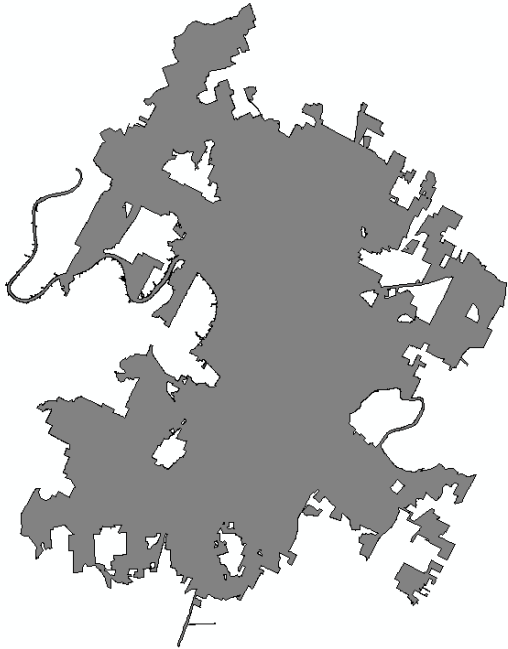


Process to Develop 100-year Projections

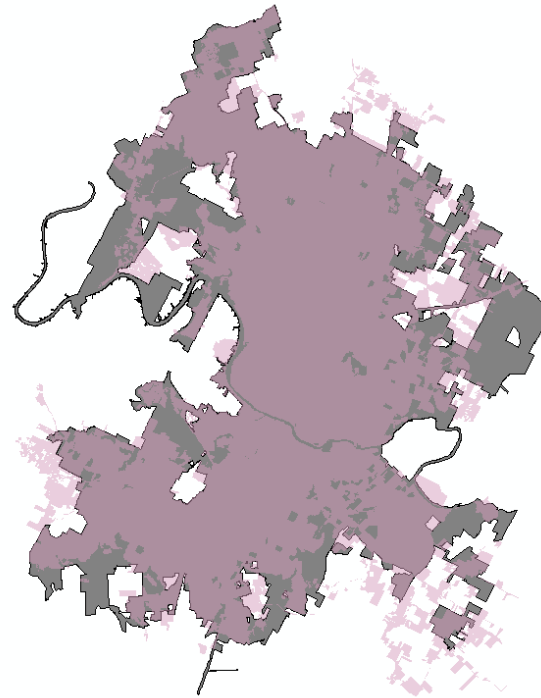


Population estimates

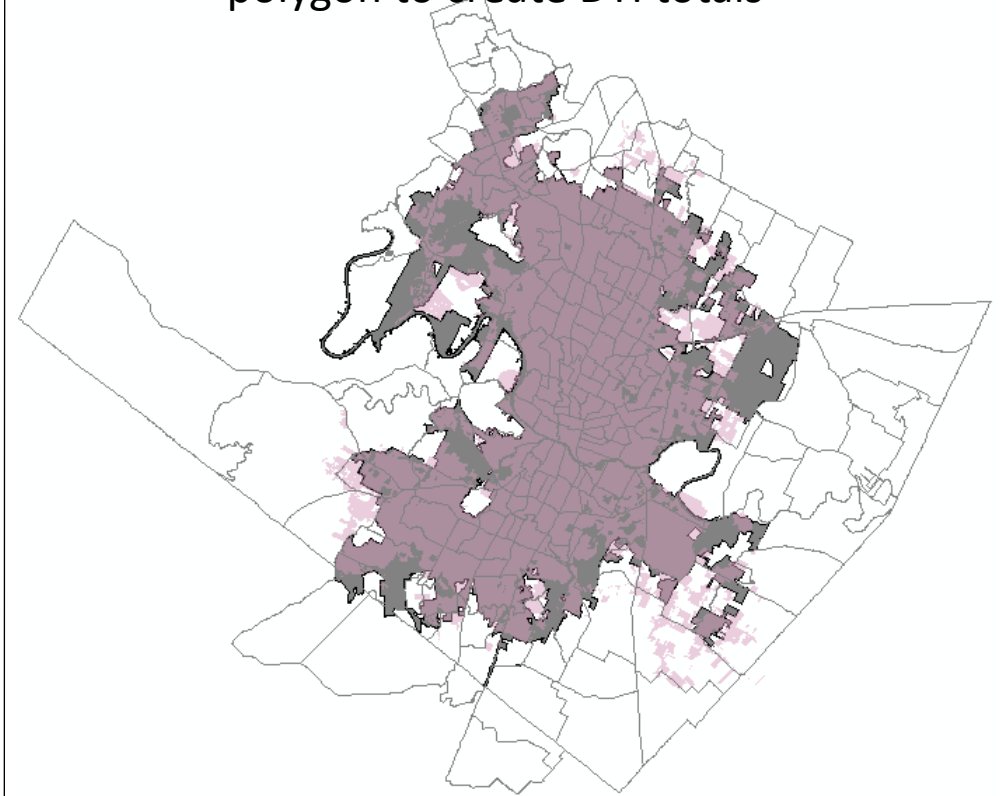
Demographer projects
totals for city and MSA



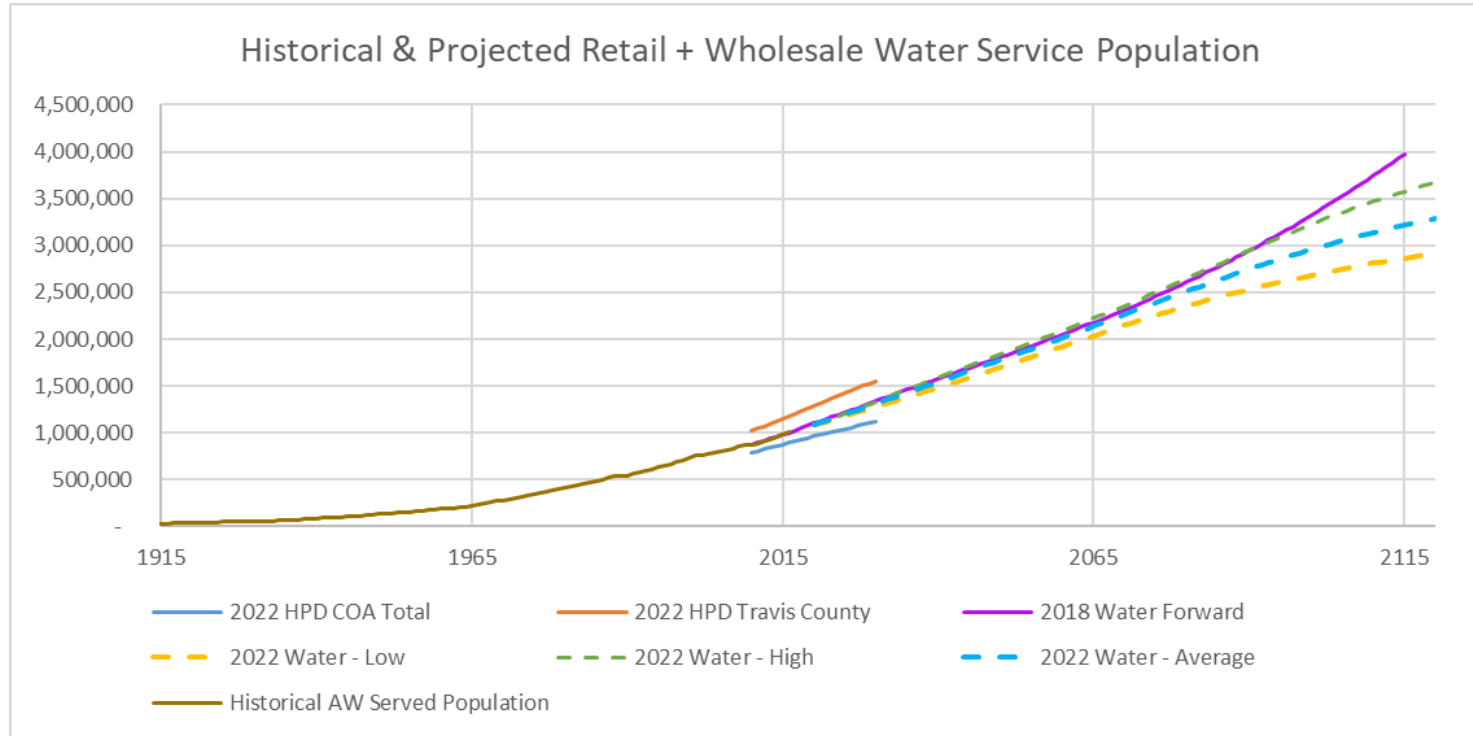
Systems Planning projects
totals for served W & WW



DTI process assumes rate of growth for each
polygon to create DTI totals



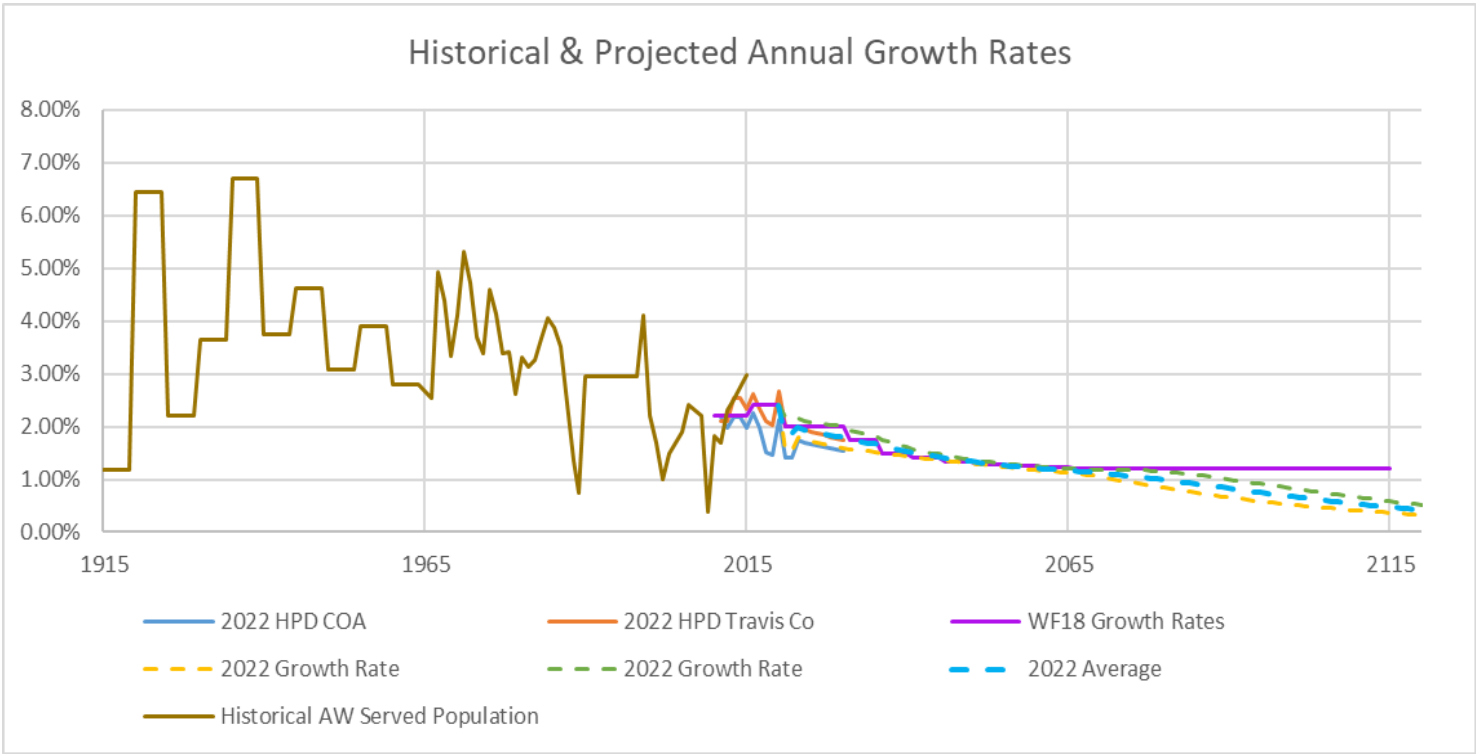
Preliminary Population Projections



Served Population			
year	Low	Average	High
2020	1,084,400		
2040	1,484,500	1,544,700	1,590,400
2080	2,354,800	2,511,000	2,649,200
2120	2,913,600	3,290,600	3,676,600



Historical & Projected Growth Rates



Served Population Annual Growth Rate			
year	Low	Average	High
2020-2040	1.58%	1.75%	1.92%
2040-2080	1.15%	1.21%	1.28%
2080-2120	0.53%	0.67%	0.81%



Delphi, Trends, and Imagine Austin (DTI) Process

Population baseline of 2020 census-informed
geographically-distributed and the 100-year Control
Total projections for population

Reviewed draft DTI-polygon level projections based on
growth rates from Water Forward 2018

Incorporated increases in population and employment
represented in service extension requests for water &
wastewater, Imagine Austin, & Project Connect

Adjusted distribution of population and employment
with Delphi Team feedback



Employment Projections



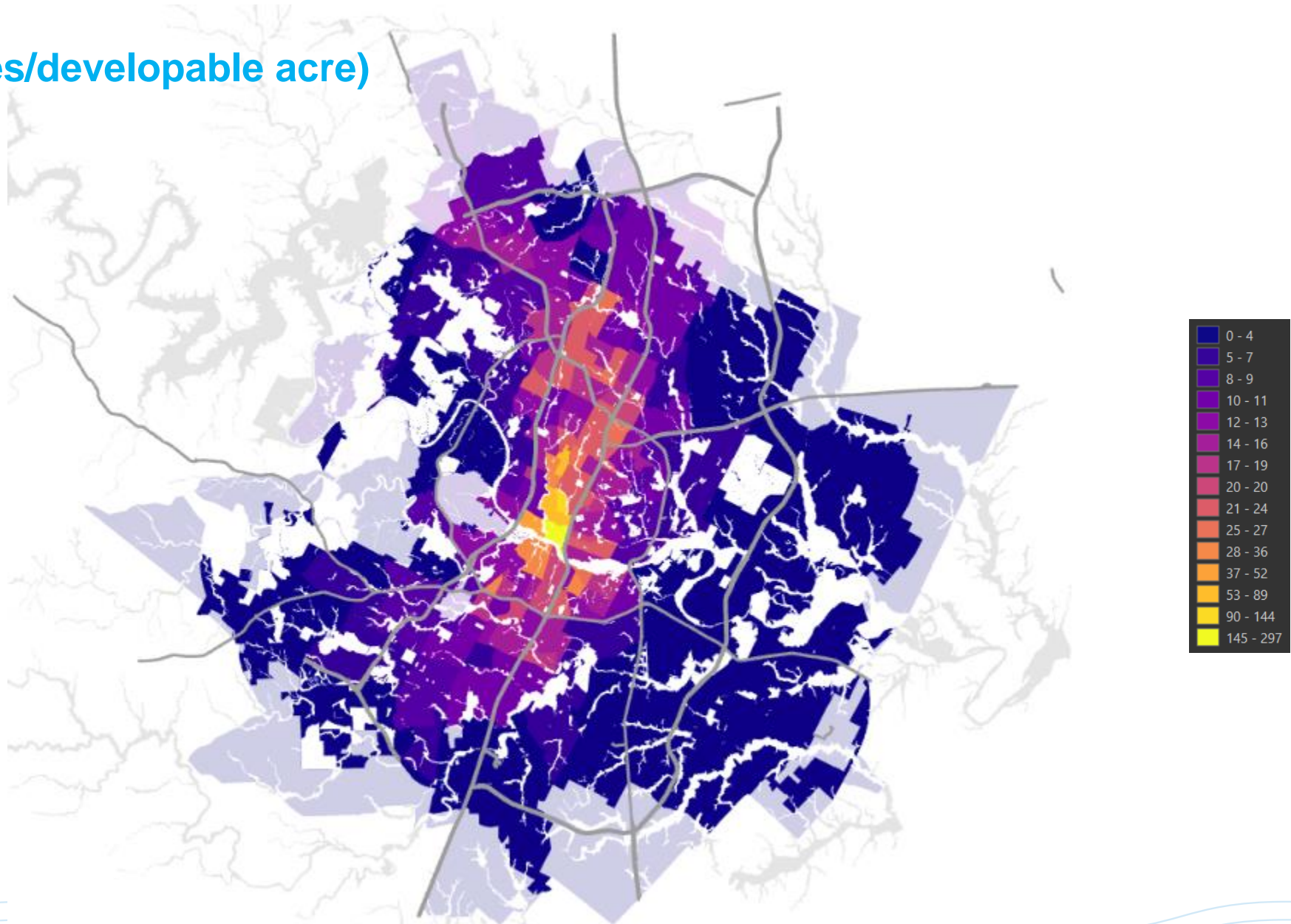
Water Forward 2018
Employment
Projections

Checked against ESRI
Business Analyst
product

Refined with SER data
and Delphi Team
feedback



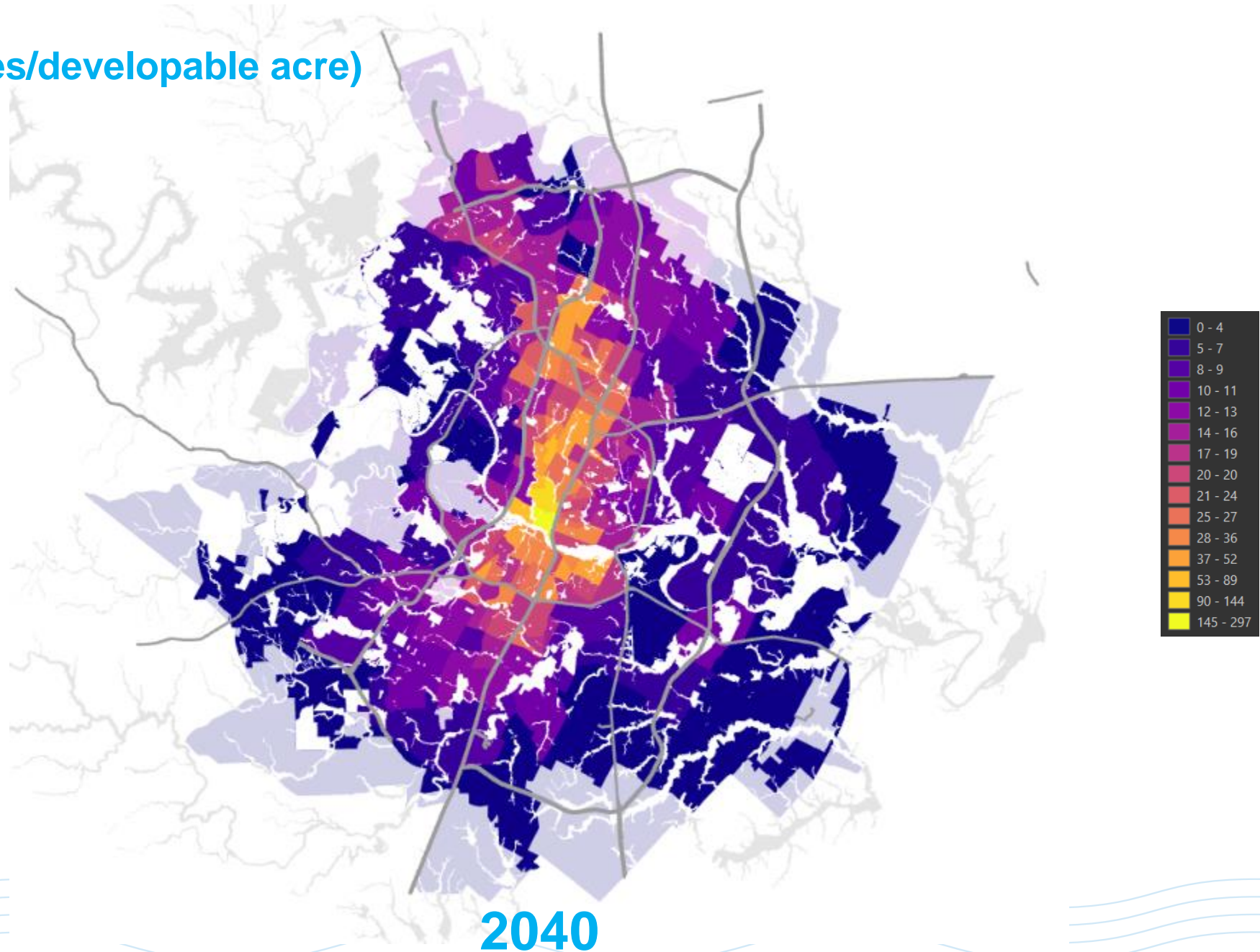
Combined Density
(people + employees/developable acre)



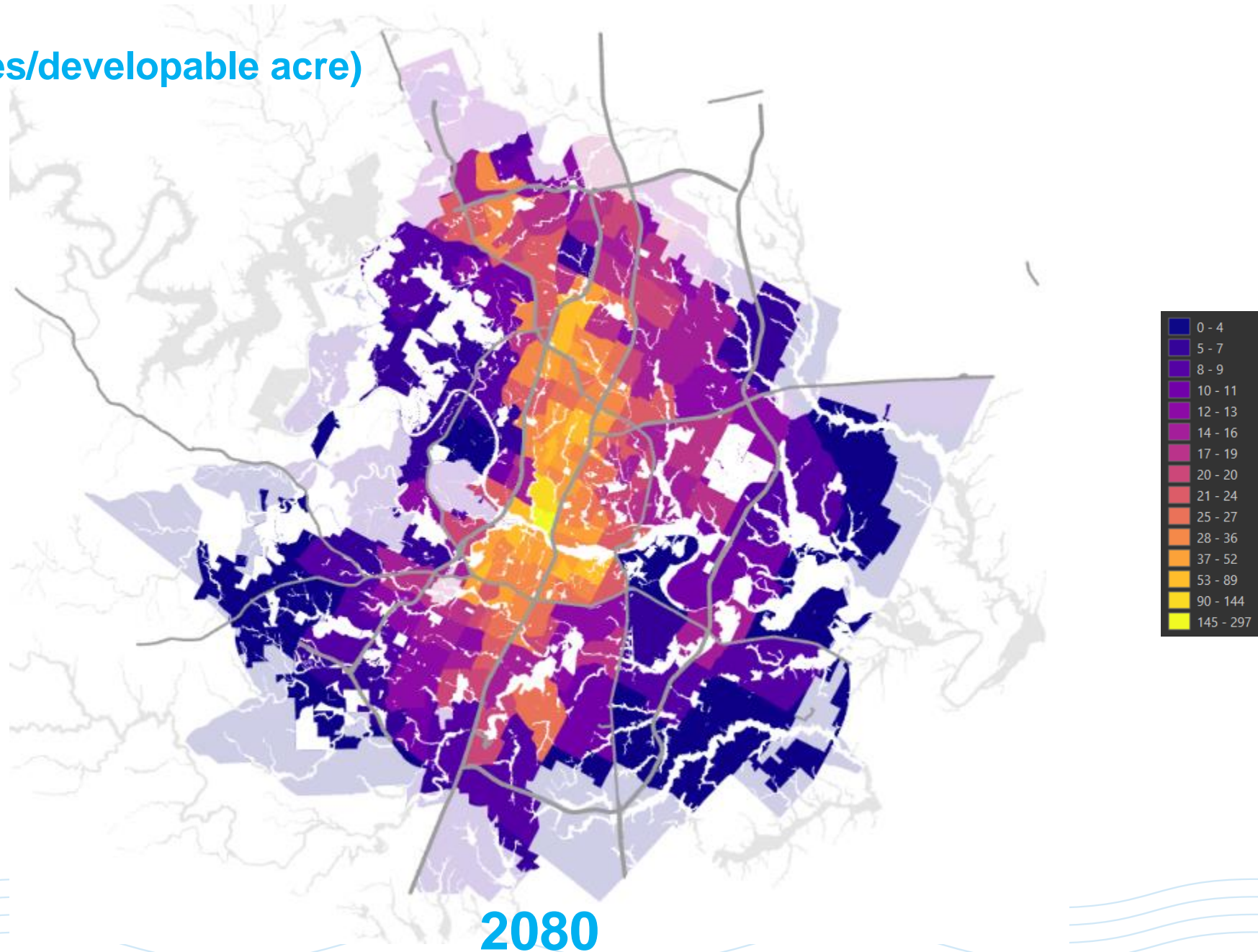
2020



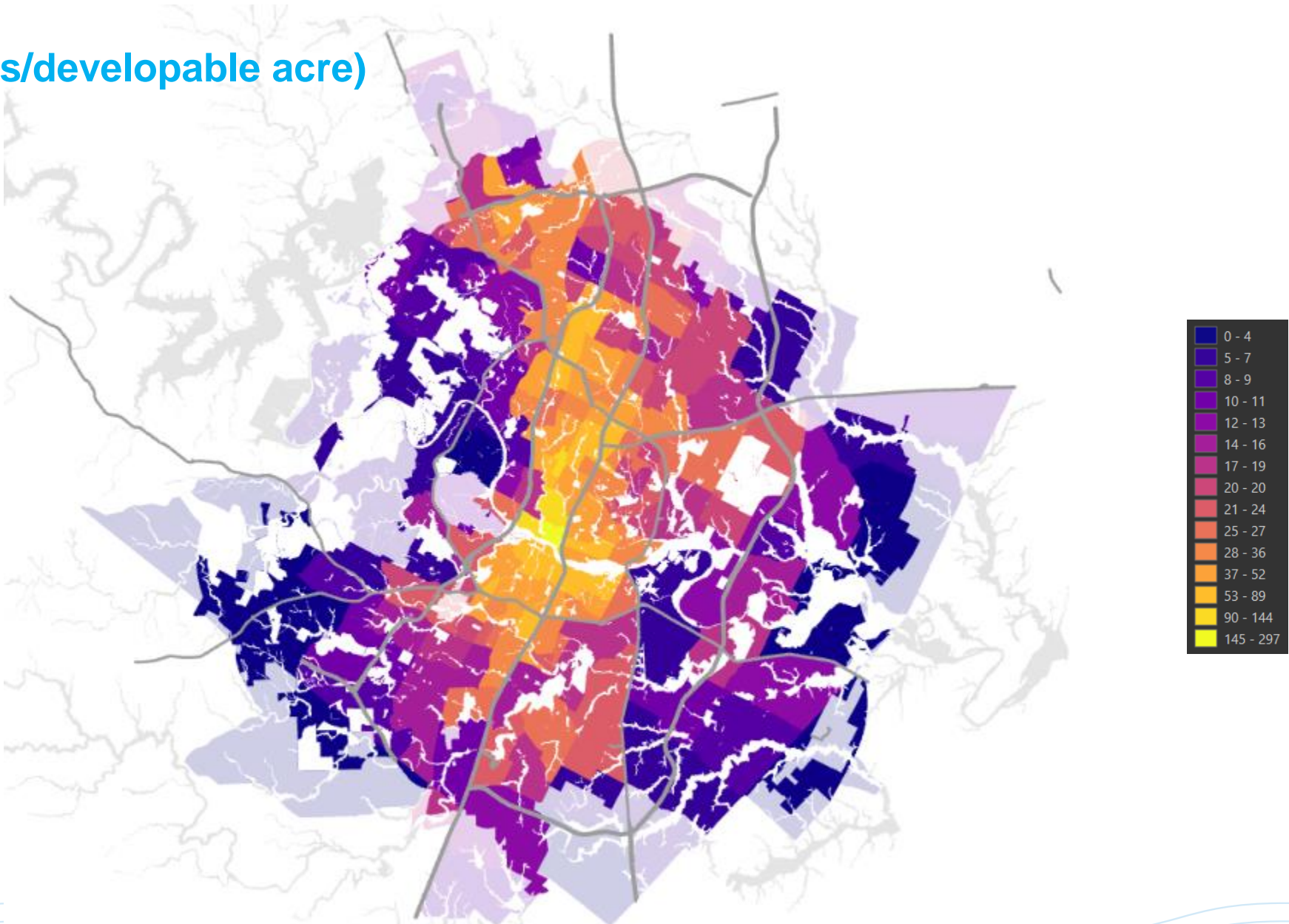
Combined Density
(people + employees/developable acre)



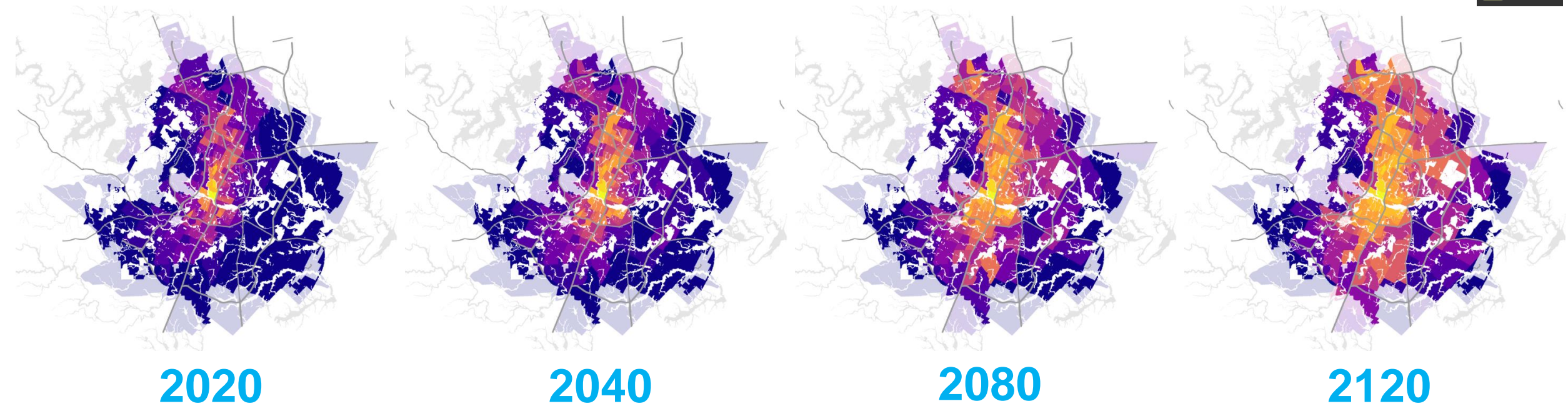
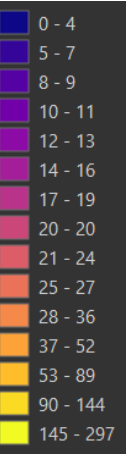
Combined Density (people + employees/developable acre)



Combined Density
(people + employees/developable acre)



Combined Density (people + employees/developable acre)



Next Steps



Next Steps

- Will seek feedback from wholesale customers on projections
- Will be working to incorporate data into the disaggregated demand model





Questions

