

# OUR FUTURE 35

Austin's Cap and Stitch Program



CORRIDOR  
PROGRAM  
OFFICE

Joint Meeting:  
Bicycle Advisory Council  
& Pedestrian Advisory Council

January 9, 2023 | 6:00 – 8:00 pm

Austin, TX



# HISTORY OF I-35 IN AUSTIN

A Legacy of Community Division

Tillotson Convocation on East Avenue – 1930s

OUR  
**FUTURE**  
35





# I-35 TODAY

The East/West Divide

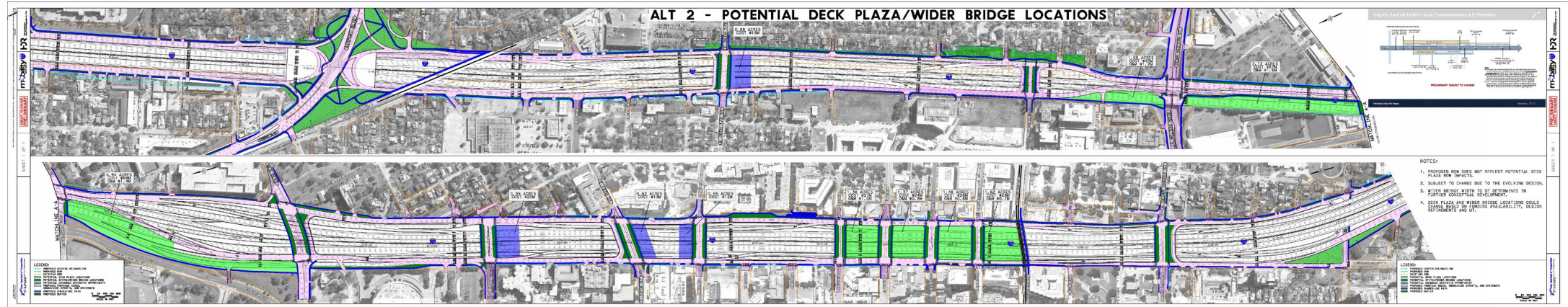
OUR  
FUTURE  
35



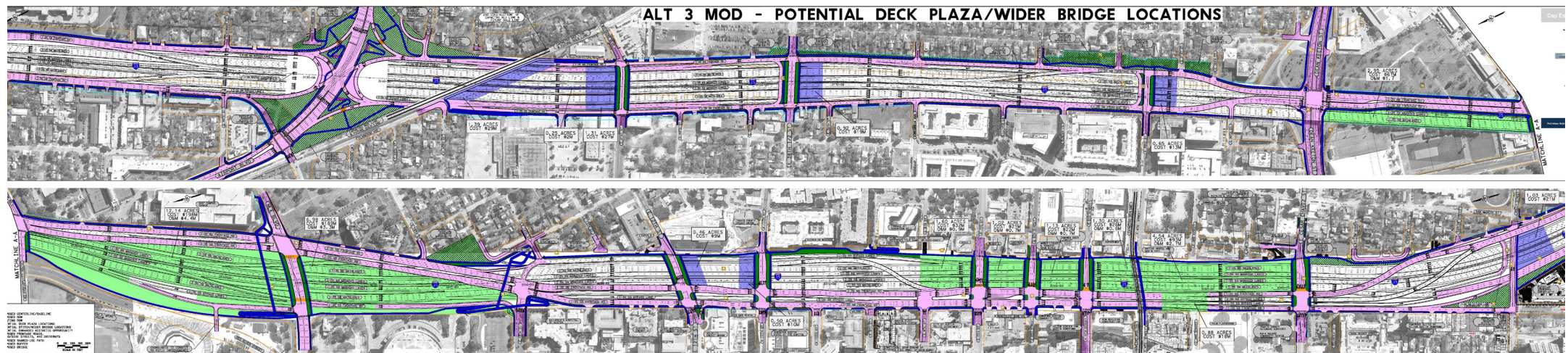


## An Input for Our Future 35

## Alternative 2:



### Modified Alternative 3 (Preferred Alternative):



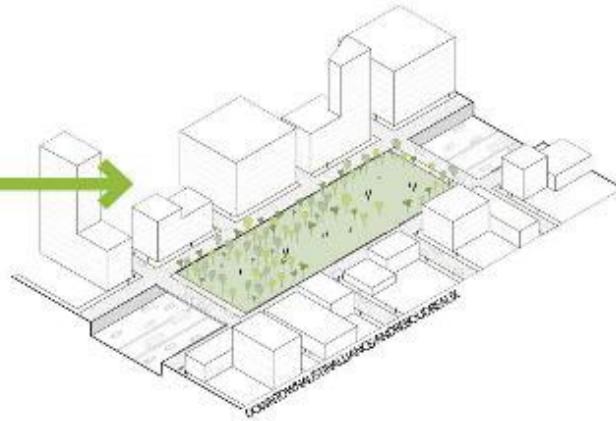


# A NEW OPPORTUNITY

## What is “Our Future 35?”

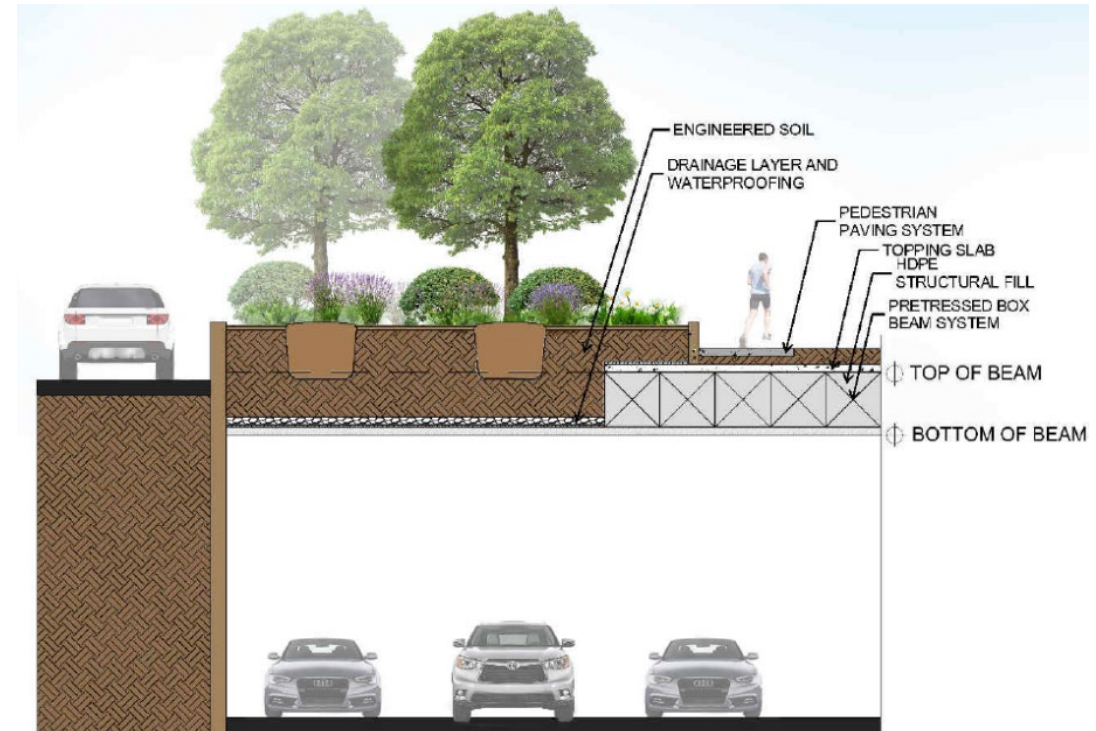
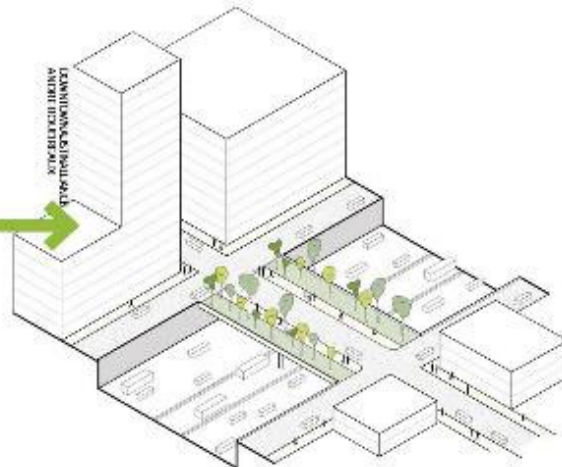
### HIGHWAY CAP

A cap is a large deck over a highway to accommodate new programming such as structures or green space. Caps are also referred to as a deck, land bridge or lid.



### HIGHWAY STITCH

A stitch is a widened bridge over a highway, connecting one side of the highway to the other. Amenities include landscaping, shade, and multi-modal enhancements.



*\*Images are for illustrative purposes only*

# GUIDING OUR VISION

## Policies and Plans



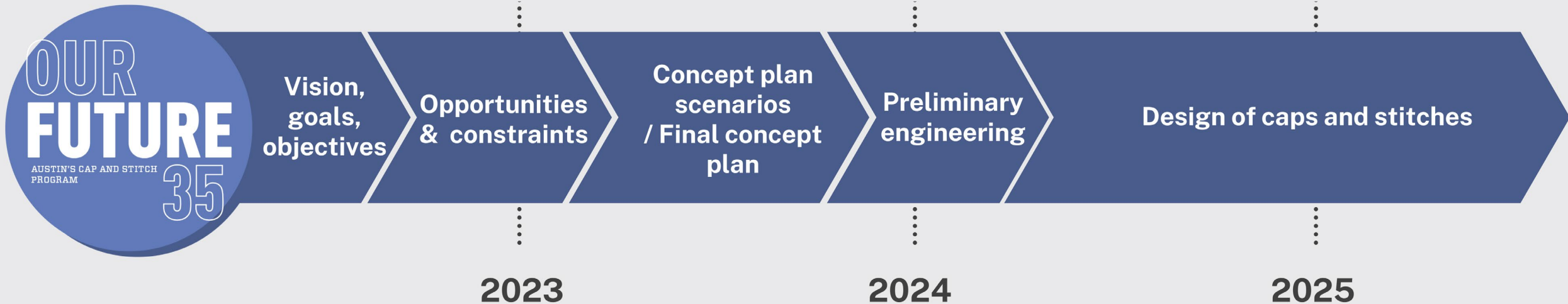
- Urban Trails Plan (2014)
- Sidewalk Plan (2016)
- Bicycle Plan (2014)
- ATX Walk, Bike, Roll updates

2023 2024 2025

## TxDOT Capitol Express Central Timeline



## Our Future 35 - Cap and Stitch Design Timeline





# HOW DID WE GET HERE?

## Engineering Feasibility Study

---

### INITIAL FINDINGS:

- One/two story structures appear to be feasible near cap edges
- Various activity and open space features are feasible on freeway caps



*\*Images are for illustrative purposes only*

*Credit: Atkins Engineering*



# CAP AND STITCH DESIGN

## Key Components

---



### PHASE 1 PRE-DESIGN (IN-PROGRESS)

- Working from Summer 2022 Atkins Feasibility Study
- Develop project vision and goals
- Community engagement
- Opportunities and constraints

### PHASE 2 PRE-DESIGN - CONCEPT ALTERNATIVES

- Develop and evaluate Cap & Stitch design and engineering concept alternatives
- Develop conceptual cost estimates
- Continue community co-creation
- Select preferred concept alternative

### PHASE 3 – 30% DESIGN/ENGINEERING



# COMMUNITY ENGAGEMENT

## Proposed Community Engagement Structure

2022

2023

2024





# COMMUNITY STEERING COMMITTEE

Kicked Off in October 2022



- Convening through Summer 2023. Comprised of community leaders, local business owners, and industry experts.
- Community Steering Committee provides feedback and guidance on:
  - Project Vision, Goals and Objectives
  - Public Outreach and Engagement
  - Program Scope and Process
- For member/co-chair bios and photos visit <https://www.ourfuture35.com/community-steering-committee>



# CAP AND STITCH DESIGN

## Vision/Goals – August Public Open House



# COMMUNITY ENGAGEMENT

## What Did We Hear? – Space Program Exercise

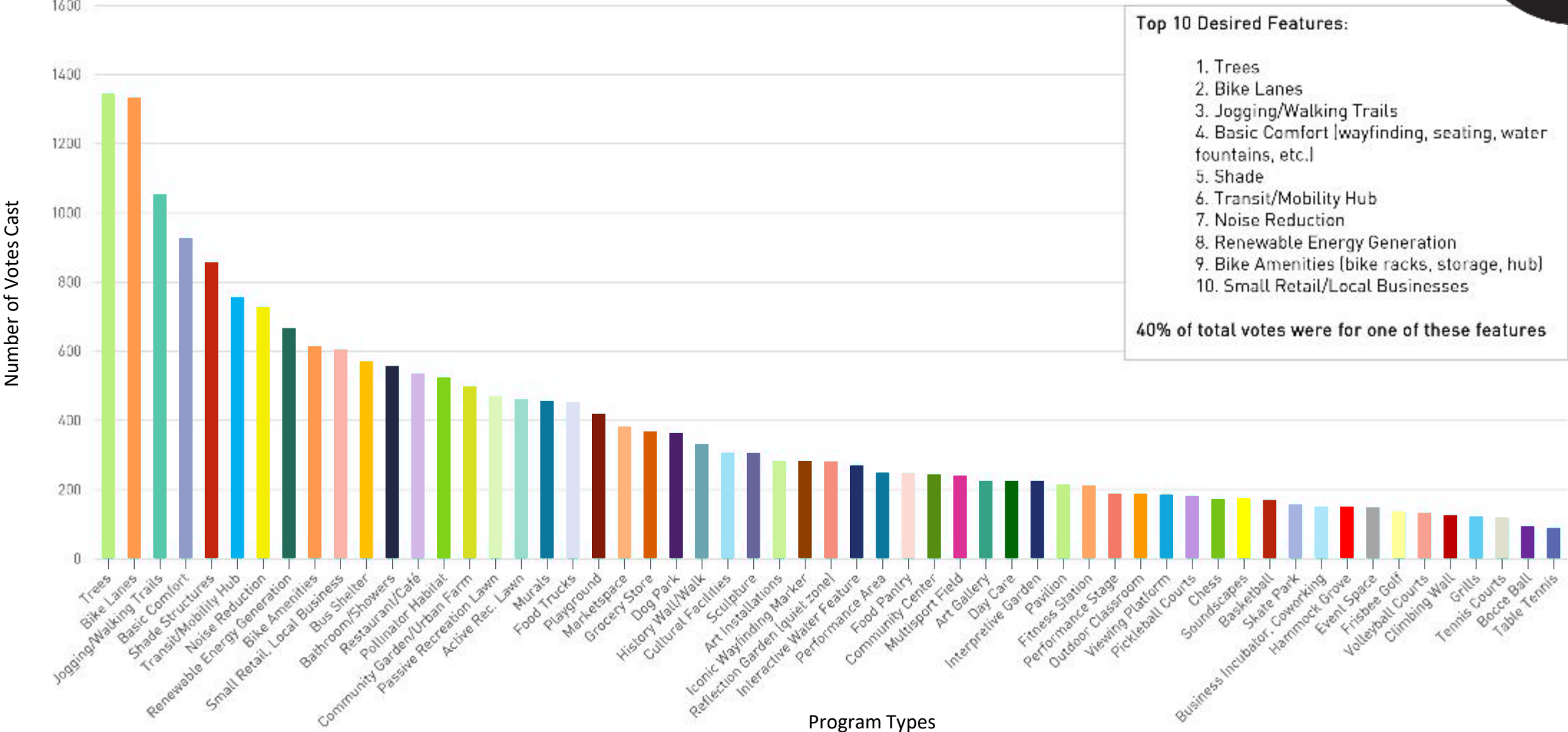


Chart summarizing votes from the programming exercise.



# EQUITABLE DEVELOPMENT STRATEGY

Kicked Off in November 2022

OUR  
FUTURE  
35

The Equitable Development Strategy ensures that new civic amenities create positive benefits for the surrounding community.

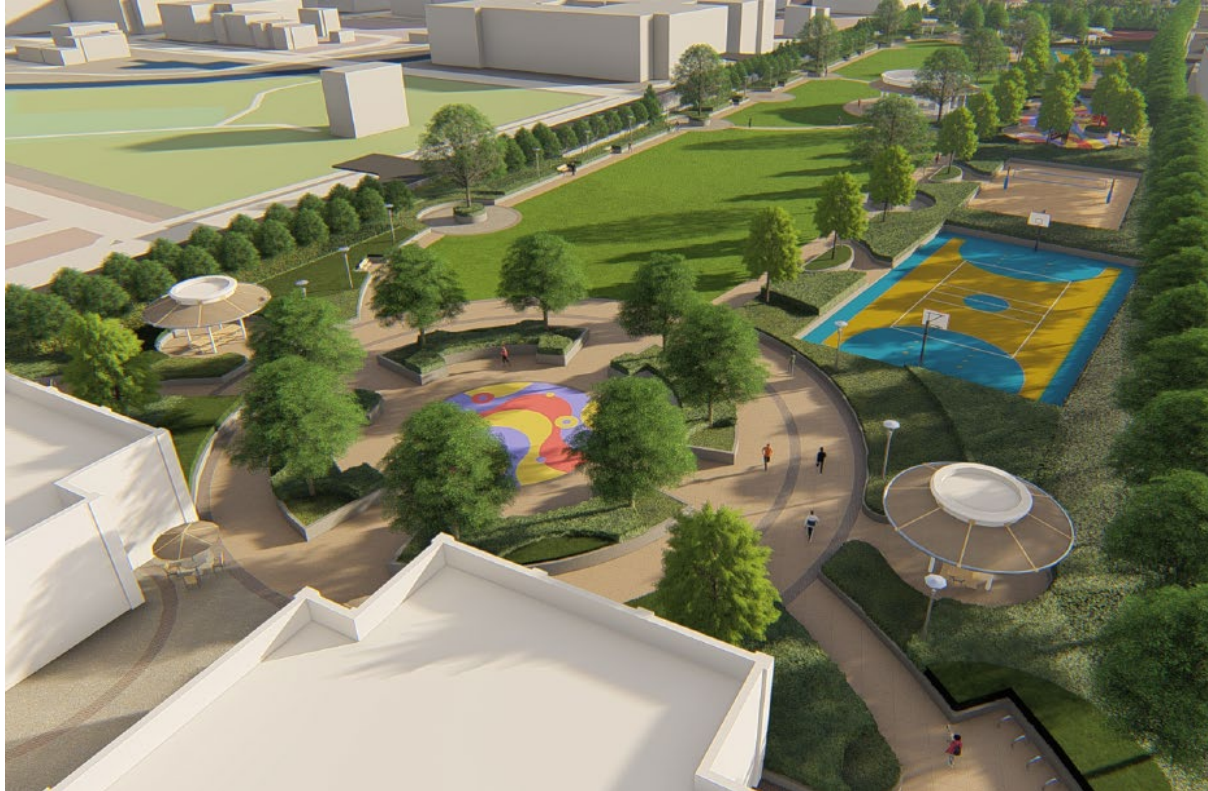
- Off-corridor community benefit
- Housing/anti-displacement
- Small business/workforce incubation
- Community development
- Arts, history, and culture opportunities
- Equitable development project opportunities
- Policy Recommendations



Credit: Six Square Facebook

# MOVING THE PROGRAM FORWARD

## Funding Strategy



*Images are for illustrative purposes only*

*Credit: Atkins Engineering*

### DEVELOP FUNDING STRATEGY

- Capital Improvements, Operations/Maintenance
- PRIORITY: Cap Structures

### ASSESS ALTERNATE FUNDING

- Value capture
- P3, private/public partnerships
- Naming rights, Sponsorships

### EXPLORE FEDERAL FUNDING, GRANTS

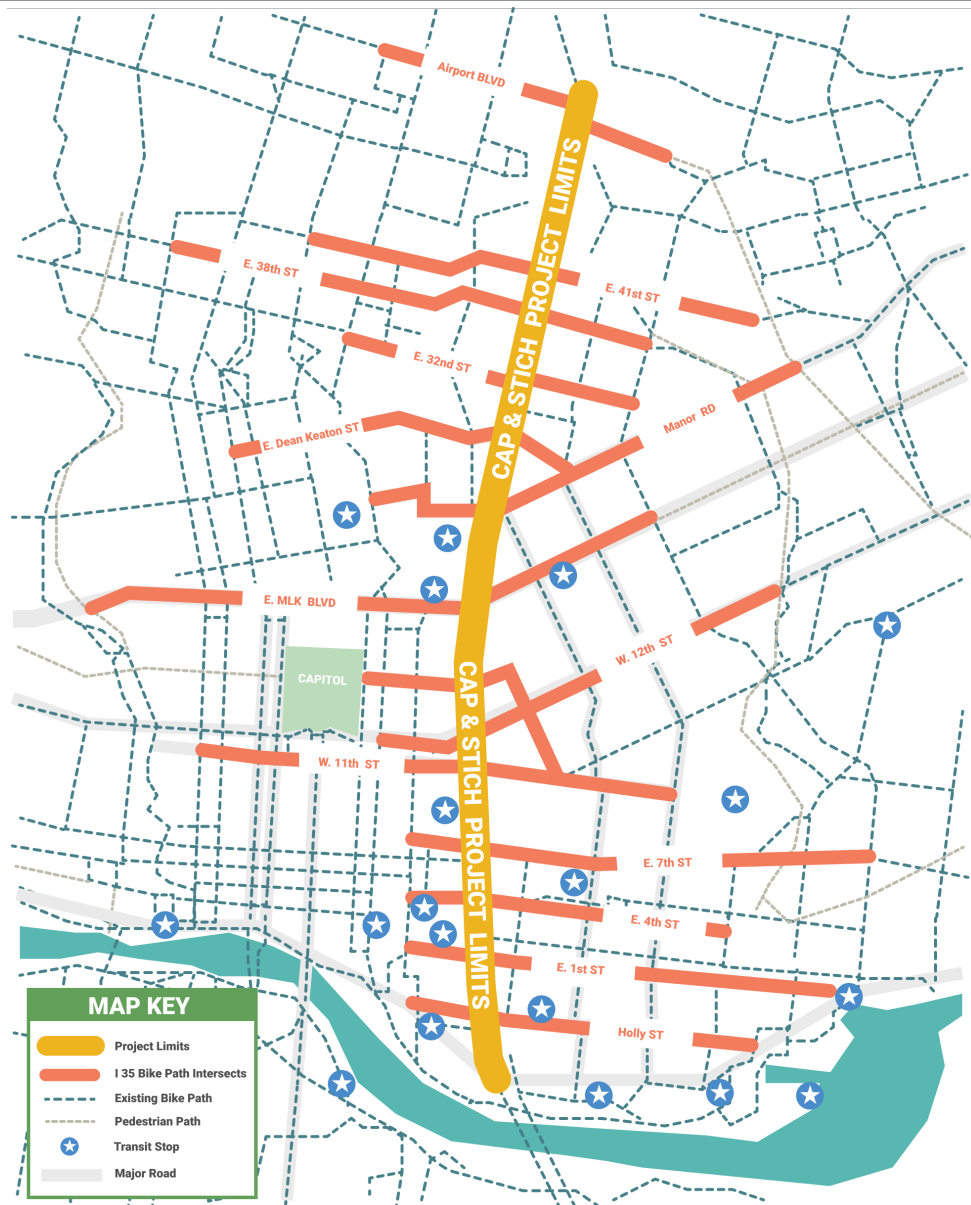
- USDOT Reconnecting Communities (Submitted 10/13/22)
- USDOT Build America Bureau Technical Assistance
- Other programs/opportunities

### COMMUNITY PROJECT FUNDING \$1.5M

- Sponsored by Representative Lloyd Doggett
- Scoping and RFQ process currently underway



# Bicycle and Pedestrian Infrastructure Opportunities



- Enhanced bicycle lane crossings on caps and stitches
- Increased walking/jogging paths on caps and stitches
- Additional separation between the roadway and bike or pedestrian paths on stitches
- Increased tree shade on caps and stitches
- Connections to transit, trails, and downtown destinations
- Destinations such as small business locations, public meeting areas or greenspaces on the caps and stitches accessible by walking or bicycling

THANK YOU TO OUR PARTNERS!



CORRIDOR  
PROGRAM  
OFFICE

**DOWN  
AUSTIN TOWN  
ALLIANCE**



**COMMUNITY**



# OURFUTURE35

Austin's Cap and Stitch Program



CORRIDOR  
PROGRAM  
OFFICE

[WWW.OURFUTURE35.COM](http://WWW.OURFUTURE35.COM)



[OurFuture35@austintexas.gov](mailto:OurFuture35@austintexas.gov)



[/ATXcorridors](https://www.facebook.com/ATXcorridors)



[@ATXcorridors](https://twitter.com/ATXcorridors)