



TRANSPORTATION

Austin Transportation Signs and Markings Division

Lauren Seyda | Division Manager | February 7, 2023

Richard Mendoza | Interim Director of Austin Transportation Department

What We Do

Ensuring the safety of motorists, bicyclists, and pedestrians

Traffic Signs



Regulatory, warning, guide
In-house fabrication

Markings



Long line, crosswalks, specialty
markings, delineators, raised pavement
markings

Street Banners



Installation of lamppost and over-the-
street banners promote events and
district identity throughout the city.



Who We Are

- 30 Field Technicians, 4 Supervisors, 1 Superintendent:

- 628 crosswalks installed/maintained
- 115 centerline miles of striping installed/maintained
- 15,500 traffic signs installed/maintained
- 15,000 signs fabricated in our in-house Sign Shop
- 2,600 street banners installed

- 8 Administrative staff:

- Managing materials and service contracts, project and program management, GIS and asset management, process improvements, coordination and planning with 10 requester groups
- Budget of \$10+ million for materials, labor, and \$1.6 million in service contracts.



What Drives Our Work

- “Requester” groups submit work orders for New Projects and Maintenance on existing assets
 - 311 Service Requests, Active Transportation, Transportation Engineering, Arterial Management, Parking Enterprise, Safe Routes to School, Smart Mobility, Vision Zero, PWD Street & Bridge
- Performance Measures which focus on maintenance performed on High-Injury Network, Equity, Schools, and responsiveness to 311 Service Requests
- Special Projects: Rainbow Crosswalk, Red Bus Lane, Emergency Response

Recent Special Projects

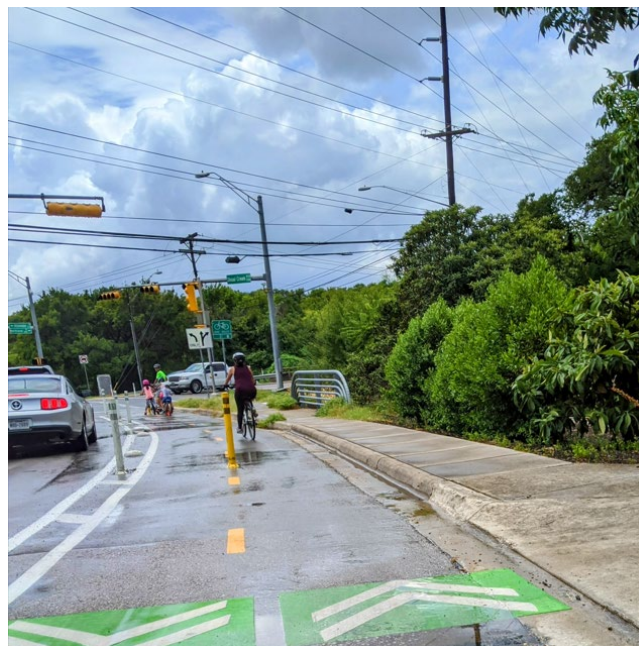
Ensuring the safety of motorists, bicyclists, and pedestrians

Red Bus and Bike Lane



Red Bus and Bike Lane Project In cooperation with Capital Metro. Project locations are W. 5th and Guadalupe and Lavaca.

Shoal Creek Project



6-Phase Protected Bike Lane Project along Shoal Creek Blvd. from Hwy. 183 to 38th St.

Congress Ave. Bike Lane



Multi-phase Improvement Project along Congress Ave. from Riverside to 11th Street, including the installation of a protected bike lane

Recent Special Projects

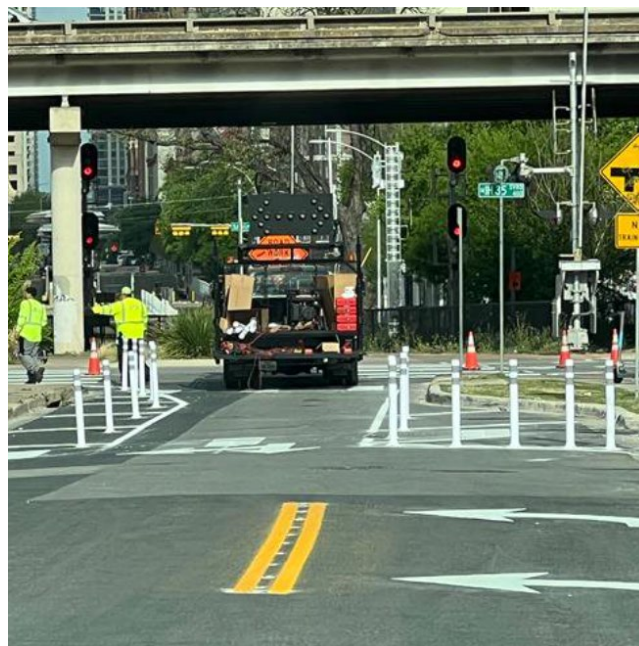
Ensuring the safety of motorists, bicyclists, and pedestrians

Rainbow Crosswalk



Staff researched and purchased colored thermoplastic to ensure quality of longevity of the crosswalk.

4th Street Conversion



Coordinated effort between multiple groups to convert 4th Street from one-way to two-way travel lanes.

Emergency Response



In FY22, SMD devoted over 325 staff hours to emergency response efforts, including water distribution, traffic control set ups, PPE distribution.

THANK YOU



TRANSPORTATION