



# City of Austin

## Housing and Planning Department

P.O. Box 1088, Austin, TX 78767 -1088

(512) 974-3100 ♦ Fax (512) 974-3112 ♦ [www.cityofaustin.org/housing](http://www.cityofaustin.org/housing)

### MEMORANDUM

**TO:** Todd W. Shaw, Chair &  
Planning Commission Members

**FROM:** Jesse Gutierrez, Senior Planner, Inclusive Planning Division  
Housing and Planning Department

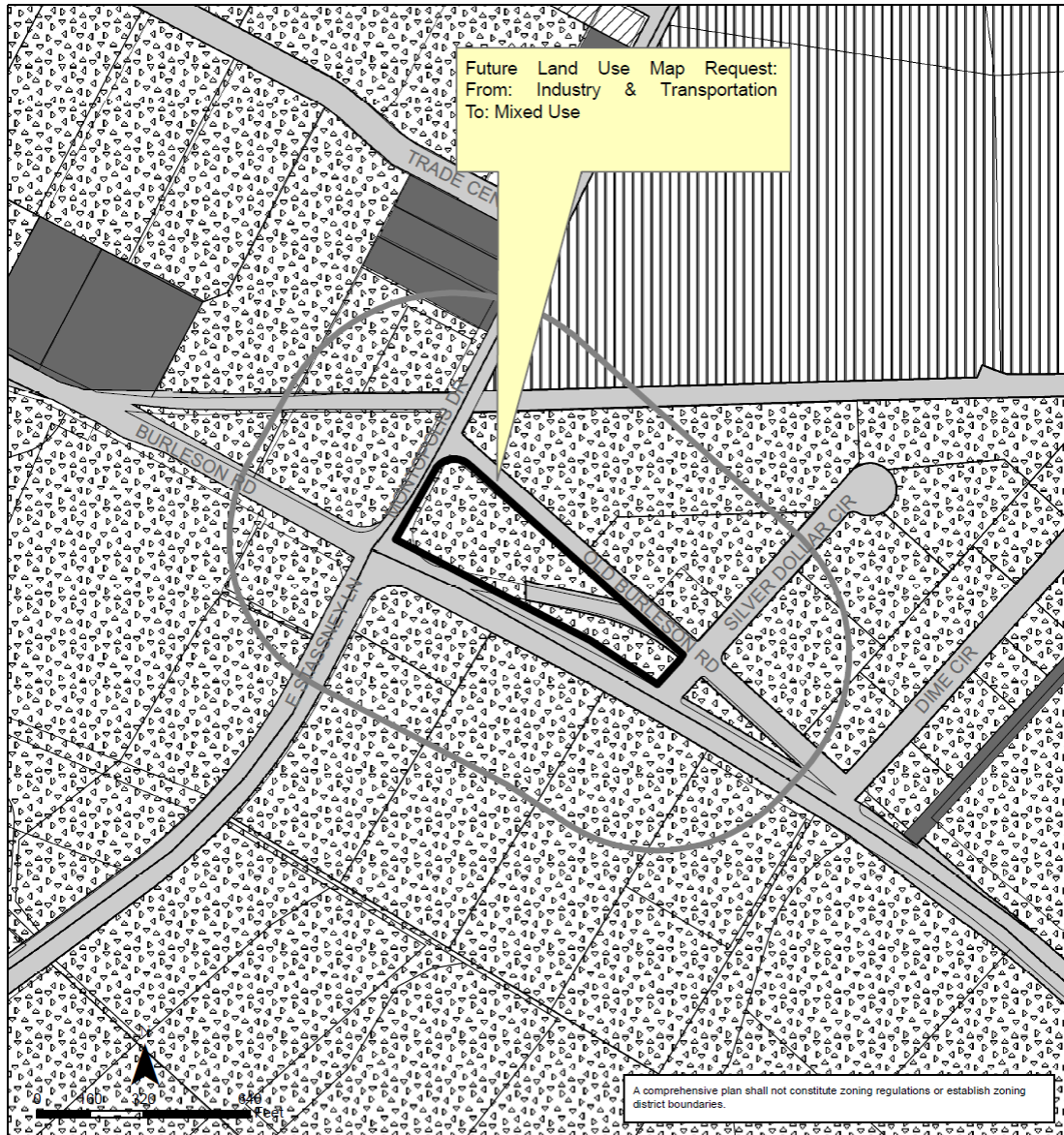
**DATE:** February 6, 2023

**RE:** NPA-2022-0014.05\_Bergstrom Spur Trail Mixed Use  
6300 and 6410 Burleson Rd  
Southeast Combined Neighborhood Planning Area (Southeast)

Staff requests a postponement of the above-referenced case from the **February 14, 2023** Planning Commission hearing to the **February 28, 2023 hearing date**.

The postponement request was made in a timely manner and meets the Planning Commission's policy.

Attachment: Plan Amendment Map



## Southeast Combined (Southeast) Neighborhood Planning Area NPA-2022-0014.05

This product is for informational purposes and may not have been prepared for or be suitable for legal, engineering, or surveying purposes. It does not represent an on-the-ground survey and represents only the approximate relative location of property boundaries.

This product has been produced by the Housing and Planning Department for the sole purpose of geographic reference. No warranty is made by the City of Austin regarding specific accuracy or completeness.



City of Austin  
Housing and Planning Department  
Created on 8/22/2022, by: MeeksS

### Future Land Use

|  |                         |  |                          |
|--|-------------------------|--|--------------------------|
|  | Subject Tract           |  | Industry                 |
|  | 500 ft. notif. boundary |  | Mixed Use                |
|  | Civic                   |  | Transportation           |
|  | Commercial              |  | Warehouse/Limited Office |